

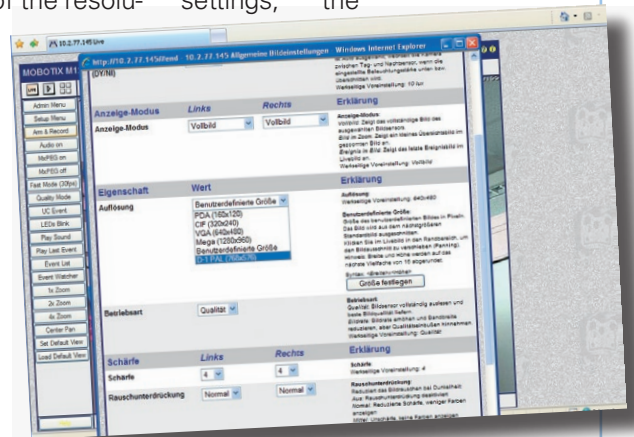
Mobotix – M12D-Sec-DNight-D43N43



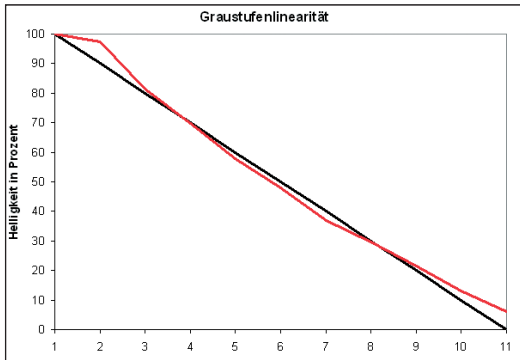
The look of the „Owl“ alone guarantees the Mobotix model a special position among the IP cameras. But the system itself has also several clear differences to conventional network cameras. Mobotix models go their own way due, amongst other things, the own in-house MxPEG format, internal recording by means of a ring memory and the numerous communication interfaces. The M12D-Sec-DNight model has two CMOS sensors (one colour sensor and a black/white sensor with higher sensitivity for night mode) each with 1.3 megapixel resolution and two associated selectable fixed focal length lenses. For both JPEG and MxPEG, the image formats are smoothly settable from 1,280 x 960 to 160 x 120 pixels. Infrared and temperature sensors are integrated. There is no analogue output. The camera is water-tight and dust-tight and contains no moving parts.

At the Mobotix images are overall of good quality. As far as the sharpness of detail is concerned however, it lies considerably under that of the other two megapixel models in the test field. All other measured values vary from good to very good. The Mobotix camera is particularly good with regard to noise, gamma error, distortions and colour fidelity. The minimum focusing distance of two metres is rather large and also makes measurement of the resolution more difficult. The simple handling and the comprehensive documentation are well-received features. The factory-set IP address of the camera is written on the housing, and is thus easy to find. A step-by-step installation Wizard is available via the

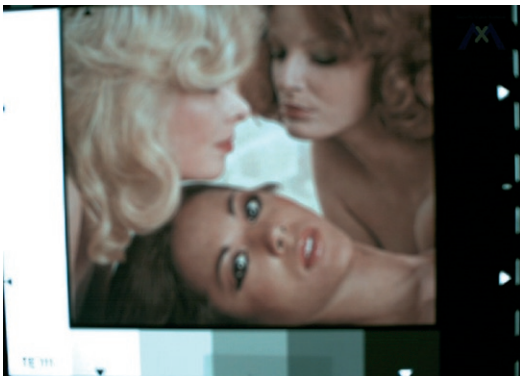
depending on the operating mode, forms a relatively large number of blocks. Access to the settings is password-protected. The setting possibilities are very comprehensive and set up in a clear fashion. As well as PC-typical resolutions up to the megapixel range (1,280 x 960), classic video formats and user-defined sizes can be set. Exactly as is the case for the network settings, the



Screenshot of the Browser-Interface.



Above: The grey tone linearity of the camera (red) in comparison to the reference value (black). Below: The reproduction of skin colours. (blurred because of the high focussing distance).



browser. This is a major advantage, particularly for less experienced users. An overview of the parameters set can be stored and printed out. No additional software is needed to operate the camera, but Mobotix includes the MxControlCenter, which allows saved clips to be played and can also include live camera images. When accessed via the browser, the image is immediately present without having to carry out any form of installation. Subjectively, the live image is of good quality. The image is fuzzy when movement takes place, this being due to the CMOS sensor. The encoder reacts somewhat slowly and,

image parameters also include numerous setting possibilities. Direct explanation or online help is available for the functions at all points. In addition, the user continuously receives status and progress information. Capture for single images and MxPEG is included. An Active-X element is however needed for MxPEG images. Operation of the Mobotix models is exemplary. The Help function that is always directly available, the step-by-step Wizard and the extremely well-made handbooks are big plus points.

Mobotix AG
Luxemburger Str. 6
D-67657 Kaiserslautern
Tel.: +49 631 3033-100
Fax: +49 631 3033-190
de-info@mobotix.com
www.mobotix.com