

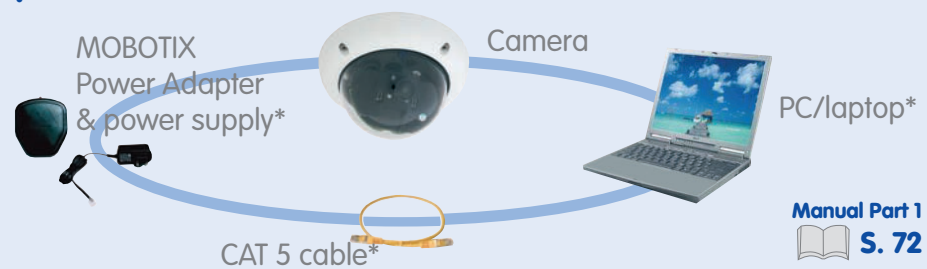
MOBOTIX D22 Quick Installation



Prerequisites (MOBOTIX Camera, Standard PC, PoE Switch, CAT 5 Cable)



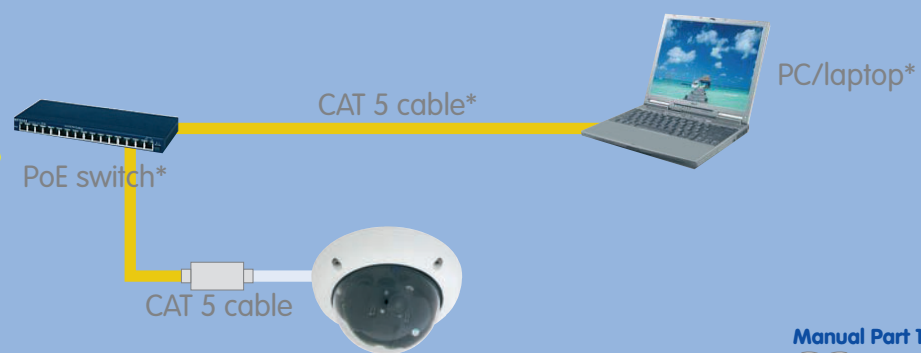
Prerequisites Without PoE Switch



Prerequisites (Troubleshooting)

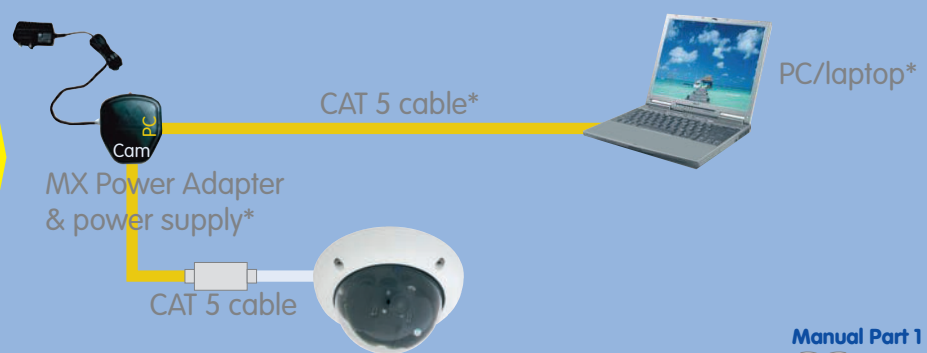
- Computer & switch need to have 10/100 Mbps network interfaces
- Using a PoE switch is the simplest method for connecting the camera
- Use the MX Power Adapter if a PoE switch is not available
- Order MOBOTIX accessories from www.mobotix.com or by phone (toll-free) 1-888-MOBOTIX

Connecting the Camera (via PoE Switch)



*Not part of the standard delivery

Connecting the Camera (Direct Connection via MX Power Adapter)



*Not part of the standard delivery

Connecting the Camera (Troubleshooting)

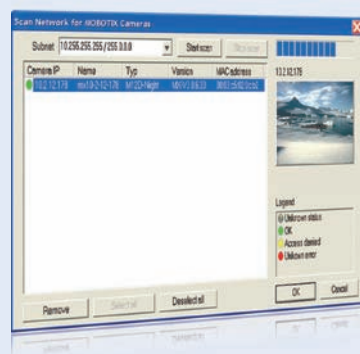
Using PoE switch:

- Does the PoE switch support the IEEE 802.3af PoE standard?
- Is the camera cable connected to a PoE port at the switch?

Using an MX Power Adapter (NPA):

- Is the computer in the same subnet as the camera?
- Is the Power Adapter connectd properly?
(power supply in the "Power" connector, computer in the "PC" connector, camera in the "Camera" connector)

The First Image in the Camera (in MxControlCenter)

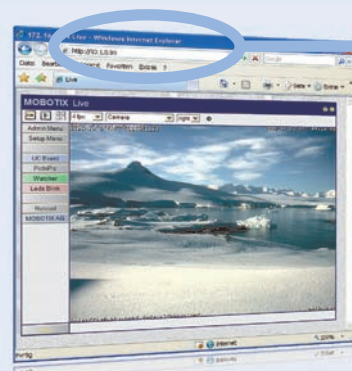


- Free-of-charge download from www.mobotix.com
- Install application from MSI file
- MxControlCenter automatically searches the cameras

● ○ LED signal:
camera is ready!

Manual Part 1
S. 86

The First Image in the Camera (in a Browser on Windows/Mac/Linux)



- Enter your camera's IP address in the browser address bar
- The IP address of your camera is printed on a sticker on the camera housing

● ○ LED signal:
camera is ready!

Manual Part 1
S. 80

The First Image in the Camera (Troubleshooting)

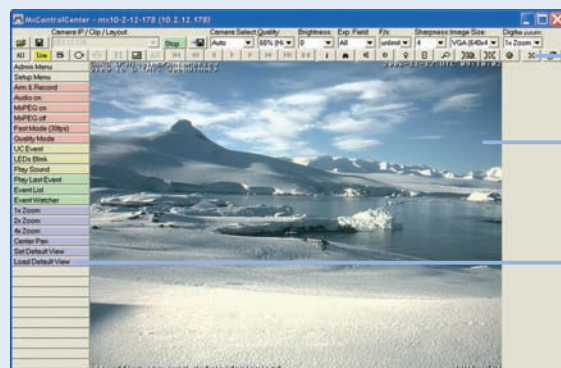
In MxControlCenter (MxCC):

- Downloaded MxControlCenter successfully from www.mobotix.com?
- Installation completed successfully?
- Camera search in the subnet found the cameras?
- For more information, see p. 64 in the Camera Manual and in the MxControlCenter User Manual

Display in a browser (Windows/Mac/Linux):

- IP address correctly entered in the browser address field?
- Firewall properly configured and camera port 80 reachable?

User Interface (MOBOTIX MxControlCenter)



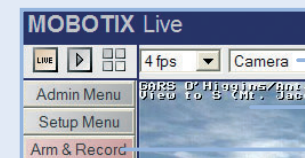
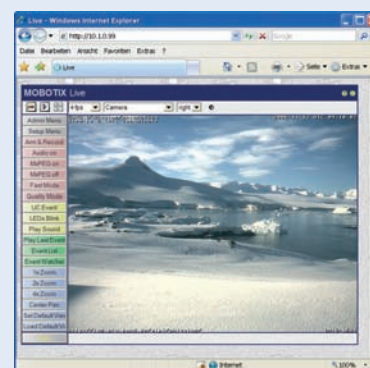
Controls

Live video display with background layouts

Camera softbuttons

Manual Part 2
S. 11

User Interface (MOBOTIX Camera)



Quick Controls

Live video

Softbuttons

Live

Event player

MultiView

Manual Part 2
S. 8

Basic Settings (MOBOTIX MxControlCenter)



Open video sources



Store configuration



Start/stop video streams (live and recorded)



Toggle alarm list on/off



Toggle Layout Editor on/off



Toggle background image mode on/off

MxCC User Manual
S. 32

Basic Settings (MOBOTIX Camera Softbuttons)



Live, event player, MutiView (Quad, events, etc.)

Admin Menu controls system configuration

Setup Menu controls event detection and recording

Arm & Record activates internal event storage

Audio on activates the camera microphone

MxPEG Codec on (video and audio display/recording)

MxPEG Codec off (single JPEG images)

Fast Mode shows fast video with up to 30 F/s

Quality Mode shows best image quality

Manually triggers an event

Manually flashes the camera LEDs

Plays back a sound on the camera speaker

Manual Part 2
S. 16

MOBOTIX (Technical Advantages)

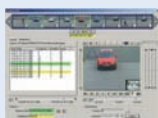
- 1 Progressive-scan instead of half-frame blur
- 2 Sun and backlight compensation
- 3 Dual camera technology: 2-in-1
- 4 Long-term, high-performance Terabyte recording included
- 5 Simultaneous recording, event search and live viewing
- 6 Very low network load
- 7 Bridging of recording during network failures
- 8 Day & night maintenance free
- 9 Audio and SIP telephony
- 10 MxControlCenter software included

Advanced Settings (MOBOTIX MxControlCenter)



Define background layouts

- Cameras can be positioned anywhere on a freely selectable background (floor plan, world map, etc.)



Event search

- Advanced search features according to events recorded by the cameras



Update camera software

- Update assistant can easily update many cameras at once

Advanced Settings (MOBOTIX Camera)



Display logos in the live images

- Use the dialogs in **Admin Menu > Logos and Image Profiles** to configure the logo generator



Access control

- Use the dialogs in **Admin Menu > Security** to configure users, groups and the corresponding access rights



External storage on file server

- Configure external storage in **Admin Menu > LAN Image Storage**

MOBOTIX (Contact)

MOBOTIX AG
Luxemburger Strasse 6
D-67657 Kaiserslautern

Tel: +49 (0) 631 3033 103
Fax: +49 (0) 631 3033 190
sales@mobotix.com
www.mobotix.com

Download the manuals from
www.mobotix.com/support/manuals

Security-Vision-Systems

