

D22M Camera Manual Part 1

MOBOTIX Camera Data

Enter the data of your camera here!

Camera Model: _____

Camera Name: _____

Factory IP Address: . . .

Current IP Address: . . .

DHCP: activated deactivated

Admin User Name: _____

Admin Password: _____



D22M Basic



D22M Secure



D22M with Vandalism Set

Note: MOBOTIX offers inexpensive seminars that include a workshop and practical exercises: **Basic Seminar** 3 days, **Advanced Seminar** 2 days. For more information, see www.mobotix.com

D22M CAMERA MANUAL PART 1

1	INTRODUCTION	6
1.1	MOBOTIX Cost Benefits	12
1.2	MOBOTIX Technical Advantages	13
1.3	MOBOTIX D22M Concept	14
1.4	Lens Options, Hardware and Software Features	20
1.5	Important Notes	24
1.5.1	Weatherproofness	24
1.5.2	Password for the Administration Menu	24
1.5.3	Irreversibly Deactivating the Microphone	24
1.5.4	Starting the Camera Using the Factory IP Address	25
1.5.5	Resetting the Camera to Factory Defaults	25
1.5.6	Activating Event Control for Security Applications	25
1.5.7	Deactivating Text and Logo Options	25
1.5.8	Deactivating the Automatic Daily Reboot of the Camera	26
1.5.9	ISDN Compatibility Notes	26
1.5.10	Using Internet Browsers	26
1.5.11	Cleaning Instructions	26
1.5.12	Safety Notes for Operating MOBOTIX Cameras	26
1.5.13	Additional Information	27
2	MOUNTING THE CAMERA	28
2.1	Preparing the Installation	28
2.1.1	Mounting to a Ceiling or Wall	28
2.1.2	Additional Mounting Options for IT/Secure Models	29
2.1.3	Network Connection and Power Supply, UPS	30
2.1.4	Providing the Camera Connections, Wall Outlets	31
2.1.5	Directions for Mounting	32
2.2	D22M-IT/Secure: Delivered Parts, Components and Dimensions	34
2.2.1	Delivered Parts and Components D22M-IT/Secure	34
2.2.2	Camera Housing and Connectors D22M-IT/Secure	35
2.2.3	Dimensions of the D22M-IT/Secure	36
2.2.4	Drilling Template for the D22M-IT/Secure Mounting Ring	37
2.3	D22M-Basic: Delivered Parts, Components and Dimensions	38
2.3.1	Delivered Parts and Components D22M-Basic	38
2.3.2	Camera Housing and Connectors D22M-Basic	39
2.3.3	Dimensions of the D22M-Basic	40
2.2.4	Drilling Template for the D22M-Basic	41

2.4	Camera Accessories: Delivered Parts, Components and Dimensions	42
2.4.1	D22M On-Wall Set	42
2.4.2	D22M In-Ceiling Set	44
2.4.3	D22M Vandalism Set	46
2.4.4	D22M Wall Mount	48
2.4.5	D22M Corner and Pole Mount	50
2.5	Mounting the Camera	52
2.5.1	D22M-IT/Secure	52
2.5.2	D22M-Basic	53
2.5.3	Finishing the Mounting Process	56
2.5.4	Notes on Mounting the Camera to a Wall Without the Wall Mount	58
2.6	Mounting the D22M to a Ceiling Using the On-Wall Set	60
2.7	Mounting the D22M to a Ceiling Using the In-Ceiling Set	62
2.8	Mounting the D22M Vandalism Set	64
2.9	Mounting the D22M to a Wall Using the Wall Mount	66
2.10	Notes	68
2.10.1	Cleaning Instructions	68
2.10.2	Wiring, Fire Prevention, Lightning and Surge Protection	68
2.11	Camera Accessories	70
3	OPERATING THE CAMERA	74
3.1	General Procedure	74
3.1.1	Establishing the Power Supply to the Camera	74
3.1.2	Connecting the Camera	74
3.2	Overview of the Configuration Settings	76
3.3	Connecting the Camera, Power Supply	78
3.3.1	Notes on Cable Lengths and Power Supply	78
3.3.2	Camera Startup Sequence	79
3.3.3	Power Supply (MxPoE) Using a Switch	80
3.3.4	Power Supply (MxPoE) When Connected Directly to a Computer	80
3.3.5	Power Supply (MxPoE) Using a Network Power Rack or Network Power Box	81
3.3.6	Power Supply (PoE IEEE 802.3af) Using Power-over-Ethernet Products	81
3.4	The First Image from the Camera	82
3.4.1	Preparing the Ethernet Connection	82
3.4.2	The First Image in the Browser	84
3.4.3	Camera Screens in the Browser	86
3.4.4	Access Using Zeroconf/Bonjour	88
3.4.5	Browser Settings	92
3.4.6	The First Image in MxControlCenter	94
3.5	Starting the Camera With an Automatic IP Address (DHCP)	100
3.6	Starting the Camera Using the Factory IP Address	101

APPENDIX: DECLARATION OF CONFORMITY DRILLING TEMPLATES (SCALE 1:1)

Note

Chapters 4 and above are part of the **Camera Software Manual** (*Software Manual* in short). The main headings are listed below to give you an overview of the *Software Manual* contents.

Download the latest version of this document as a PDF file from www.mobotix.com,
Support > Manuals

SOFTWARE MANUAL PART 2

4 CAMERA USER INTERFACE

- 4.1 The First Image in the Browser
- 4.2 The First Image in MxControlCenter
- 4.3 The Live Screen in the Browser
- 4.4 The Playback Screen in the Browser
- 4.5 The MultiView Screen in the Browser
- 4.6 PDA Screen
- 4.7 Guest Screen
- 4.8 Browser Settings
- 4.9 Configuring the Softbuttons
- 4.10 Fast Video Streaming
- 4.11 Operating Multiple Cameras

5 GENERAL CAMERA CONFIGURATION

- 5.1 Overview
- 5.2 Quick Installation
- 5.3 Connection Test
- 5.4 Basic Settings
- 5.5 Image Controls
- 5.6 Logos
- 5.7 Exposure Settings
- 5.8 Day & Night Modes
- 5.9 Managing Settings

6 SOFTWARE UPDATES

- 6.1 Overview
- 6.2 Preparatory Steps
- 6.3 Updating the Camera Software
- 6.4 Update Checklist

7 EVENTS, ACTIONS AND MESSAGES

- 7.1 Overview
- 7.2 Functional Overview
- 7.3 General Procedure
- 7.4 Screen Display of Event Settings in Live Image
- 7.5 Arming
- 7.6 Events
- 7.7 Actions and Messaging, Action and Messaging Profiles
- 7.8 Working with Profiles
- 7.9 Time Tasks

8 RECORDING

- 8.1 Overview
- 8.2 Recording Modes
- 8.3 Recording Types

9 TELEPHONY FEATURES

- 9.1 Overview
- 9.2 VoIP Settings for IP Telephony
- 9.3 Camera Phone (Listen, Speak and Intercom Modes)
- 9.4 Phone Profiles: Outbound Phone Calls
- 9.5 Phone Call-In: Inbound Phone Calls
- 9.6 Remotely Controlling the Camera Using a Phone
- 9.7 Sample Configurations for IP Telephony via Internet
- 9.8 Sample Configurations for IP Telephony on a LAN
- 9.9 Video Telephony

10 MOBOTIX CAMERAS ON THE WEB

- 10.1 Overview
- 10.2 Indirectly Accessing MOBOTIX Cameras via the Web
- 10.3 Directly Accessing MOBOTIX Cameras via the Web
- 10.4 Configuring the Router
- 10.5 DynDNS

11 SOFTWARE INTERFACES

- 11.1 Overview
- 11.2 Accessing the Camera's Live Image and the Event Images
- 11.3 Accessing the Camera's Live Image Using the Second Image Channel
- 11.4 Video Streaming
- 11.5 The HTTP API

12 TROUBLESHOOTING

- 12.1 Overview
- 12.2 Troubleshooting Checklist
- 12.3 Diagnostic Tools of the Camera
- 12.4 Monitoring Tools of the Camera
- 12.5 Potential Issues
- 12.6 Additional Information
- 12.7 Sending Back the Camera
- 12.8 Warranty

Note

Download the latest version of this document as a PDF file from www.mobotix.com, **Support > Manuals**.

More information:
www.mobotix.com

Information subject to change without notice!

Copyright © 1999-2007 MOBOTIX AG, Kaiserslautern, Germany.

All rights reserved. MOBOTIX, MxPEG and MxControlCenter are worldwide trademarks of MOBOTIX AG. Microsoft, Windows and Windows Server are registered trademarks of Microsoft Corporation. Apple, the Apple logo, Macintosh, OS X and Bonjour are trademarks of Apple Inc. Linux is a trademark of Linus Torvalds. All other marks and names mentioned herein may be trademarks or registered trademarks of the respective owners.

High resolution: QXGA format with 2048x1536!

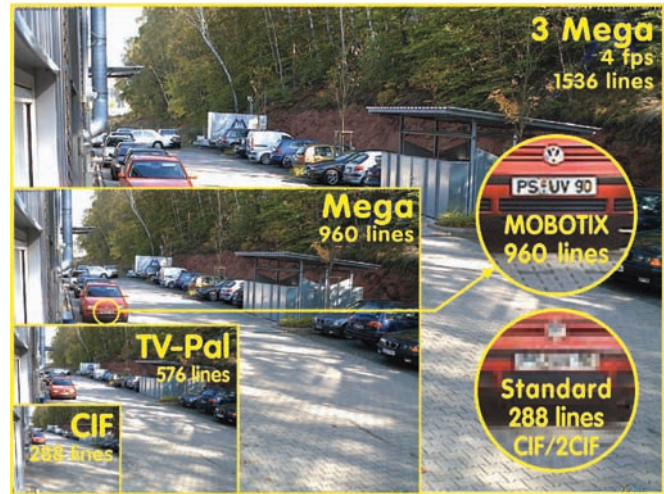
30 frames per second in VGA format!

1 INTRODUCTION

The **D22M** cameras are powerful yet compact MOBOTIX network cameras that are capable of creating high-resolution live video streams (**QXGA format: 2048x1536 pixels**) with high image rates. When showing **VGA video (640x480)**, the camera can deliver up to **30 fps**. Even **Megapixel video (1280x960)** will still generate up to **10 fps**. The camera transmits lip-synchronous audio, both in the browser (ActiveX plug-in) and when using **MxControlCenter** (external speaker and microphone required; not available on D22M-Basic).



The MOBOTIX D22M is available as **SECURE, IT or Basic** model with different features (the Basic model does not have audio features). The D22M can be fitted with any of the five M14 high-performance lenses. Because of the low power consumption of only 3 Watts, the MOBOTIX D22M cameras feature the highest operating temperature range in the market

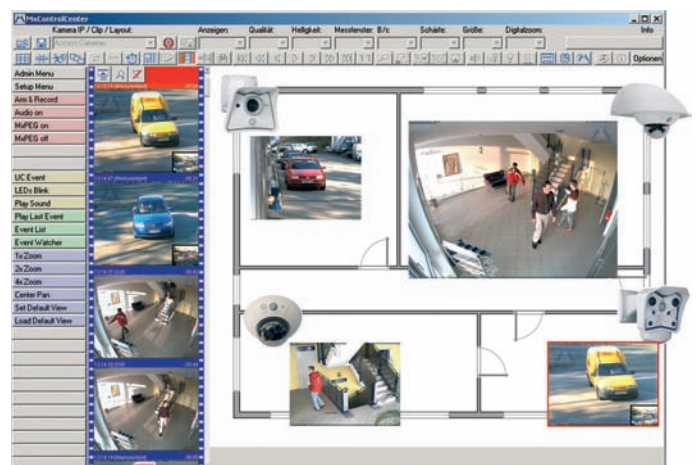


from **-30 to + 60°C (-22 to 140°F)**. Since MOBOTIX cameras neither fog up nor require heating, power can be supplied via the network cabling using standard PoE products. D22M IT and Secure models are absolutely dust-proof and resistant against water jets (**IP65**; D22M-Basic: IP54). When mounted to the **D22M Wall Mount**, the camera can be used in outdoor applications; the wall mount perfectly covers wall outlets, thus providing completely concealed cabling.

Like all other MOBOTIX cameras, the D22M models have more to offer than only the camera features. The integrated software features include a multitude of functions, such as **video motion detection, long-term recording, alarm messaging and video IP telephony** to name but a few features. Unlike in camera systems from other manufacturers, buying and installing additional software on the computer is thus unnecessary. Instead of using a web browser, you can also download the free **MxControlCenter** from the MOBOTIX website, which allows displaying multiple cameras on one monitor, allows for comfortably searching and

Everything integrated!

MxControlCenter



evaluating the alarm video clips and provides alerting features (including audio).

While **MxControlCenter** has been providing **virtual PTZ features** for quite a while, these features are now available **directly in the MOBOTIX camera**. This means that you can continuously zoom into or out of the live image using either the mouse wheel or a joystick. When storing images or video sequences, you can choose to store either the **visible image area** of the live image or the **full sensor image**. The second option would also allow examining the parts of an image or video after the event that had not been in the visible image section of the live image.



Virtual PTZ

Another problem known from photography are the distortions from wide-angle lenses. Straight lines at the image borders are bent inwards towards the corners. The integrated distortion correction features of the camera (and of MxControlCenter) allow **correcting** the bent lines of various lenses **using software algorithms**.



Image section with correction of wide-angle distortion

The current MOBOTIX cameras support direct storage on the **integrated Flash storage media, internal SD cards and external USB media**. The **MOBOTIX Secure R versions** are a highlight in this respect as they are delivered with an **integrated Flash storage device** (e.g. **R8** with 8 GB).



D22M-Secure models support SD cards and external USB devices.

An internal Flash storage option is currently not available for D22M models.

D22M-Basic

The D22M-Basic, with a diameter of only 12.9 cm (5 in) and a height of only 8.5 cm (3.3 in) is the most compact and most discrete MOBOTIX camera. The camera is weatherproof (IP54) and thus suited for outdoor use.



ø 129 mm/5.1 in

Note

Die **D22M-Basic** ist die richtige Wahl für Webcam-Anwendungen und einfache Überwachungsaufgaben.

D22M-IT and Secure
(IP65)

D22M-IT/Secure

The D22M IT and Secure models feature additional functions and security features. Among other things, you can connect an external speaker and microphone, store images and video sequences on an external file server (including audio) and call the camera using SIP video*. MOBOTIX also provides accessories for indoor and outdoor applications and vandalism-prone areas. The camera is weatherproof (IP65) and thus suited for outdoor use.



ø 160 mm/6.3 in



*Accessories required for
D22M: external micro-
phone and external
speaker

Note

D22M IT and Secure models are the right choice for more sophisticated surveillance applications.

Accessories for the MOBOTIX D22M

- **On-Wall Set:** This set can reliably protect external cables if the cables cannot be guided from below the housing but have to be led above the wall for technical or legal reasons. In addition, the On-Wall mount provides ample space for extra modules (batteries, WiFi, ...).



ø 165 mm x 37mm
/6.5 x 1.5 in



On-Wall Set (IP65)

