



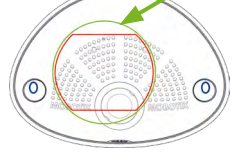




With this type of installation, the mounting plate of the In-Wall Installation Set is screwed onto a cavity wall socket. The i26 itself is screwed onto the mounting plate using Allen screws. There is no drilling for dowels or screws required.

1. Cut out the hole for the cavity wall socket

Mark the hole for the cavity wall socket (green circle on drilling template) and cut out the hole.



2. Insert the cavity wall socket

Insert the cavity wall socket and tighten the two screws (red arrows) in order to fasten the socket in the wall.



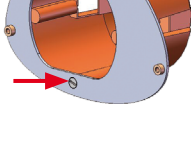
3. Remove the screws

Remove the two screws in the cavity wall socket (red arrows), which are otherwise used for fastening switches etc.



4. Attach the mounting plate

Use the two screws you just removed to fasten the mounting plate onto the cavity wall socket.



5. Press wall sealing on i26

Press the wall sealing onto the back of the i26 and make sure that it lies flat all around the rim. Note that the labels of the sealing are pointing toward the back of the camera.



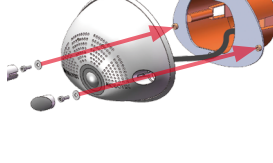
6. Connect the cables

Guide the cables of the camera from behind through the cavity wall socket. Insert the Ethernet cable and – if installed – the USB cable into the corresponding sockets. Secure the connectors using the blue bayonet catches.



7. Install the i26

Push the remaining cable into the cavity wall socket, then press the camera and the wall sealing onto the mounting plate. Use the two Allen screws with the washers to fasten the i26 onto the mounting plate (0.4 Nm).



8. Apply screw plugs

Push in the screw plugs to close off the holes with the screws. When doing so, make sure that the notches in the plugs follow the guides.



Initial Operation of the i26

The initial operation starts with connecting the power supply (see section «Network and Power Connection, Additional Cables» in the Q25 Camera Manual). The first access follows the procedure described in the same manual in the section «Initial Operation of the Camera». All other tasks require access to the camera's user interface in the browser. Enter the camera's IP address into the address bar of the browser.

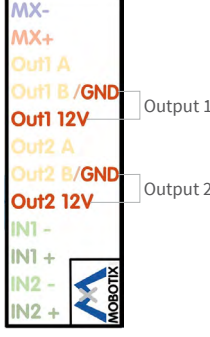


1. Configuring and Using the MxIOBoard-IC

The camera will automatically detect an installed MxIOBoard-IC (see **Camera Status, System** section in browser).

The signal inputs can be used right away in the **signal input profiles** in the **Setup Menu > Event Overview**. Likewise, the signal outputs can be used in the **signal output profiles** in **Admin Menu > Hardware Configuration > Signal Out Profiles**.

In addition, the signal inputs/outputs have been entered automatically in the **Admin Menu > Assign Wires** dialog and can be used to control doors and lights.



To use one or both signal outputs not as potential-free outputs (for relays), but as **self-powered 12 V outputs**, open the **Admin Menu > Hardware Configuration > Manage Hardware Expansions** dialog. In the **MxBus/IO Board** section, click on **Connect** for each output you want to use as self-powered output.

2. Save the configuration

In the live image of the browser, select the **Manage Settings** quick control and set **Store Entire Configuration** as value. The camera stores the configuration in the permanent camera memory so that the settings will be applied at the next camera reboot.

Boot Options of the i26

By default, the camera starts as DHCP client and automatically tries to get an IP address from a DHCP server. To start the camera in a mode different from the default mode, you can activate the boot menu of the camera.

1. Prepare the Camera

- Disconnect the camera's power supply.
- Make sure that you have suitable item such as a paper clip at hand, **but never use sharp or pointed objects!**
- Reconnect the power supply of the camera.

2. Activate the Boot Menu

The red LED lights up 5 to 10 seconds after establishing the power supply and will stay on for 10 seconds. Briefly press the key by inserting the paper clip into the hole indicated by the red circle in the figure. The camera enters the boot menu, ready for selecting one of the boot options.

The LED now flashes once and repeats the flash signal after pausing for one second (the number of flashes indicates the current boot option). To go to the next boot option, briefly press the key again (< 1 sec). After the last boot option, the camera returns to the first option (LED flashes once).



LED flashes	Boot Option	Meaning	Audio Confirmation*
1 x	Auto Configuration	Starts the auto configuration in order to operate this camera as a door station (not supported on all camera models).	Phone ringing
2 x	Factory Defaults	Starts the camera with factory defaults (factory default IP address, users and passwords will not be reset).	Boing
3 x	Automatic IP Address	Starts the camera as DHCP client and tries to obtain an IP address from a DHCP server. If a DHCP server cannot be found or no IP address can be obtained, the camera starts with its factory default address.	Boing Boing
4 x	Recovery System	Starts the camera with the recovery system, e.g., in order to recover from a failed update of the camera software.	Alarm Sound

\*Only on cameras with audio option and installed speaker.

3. Select a Boot Option

Press the paper clip longer (> 2 sec) into the hole. The camera confirms the selection by flashing rapidly three times. You can now remove the paper clip. After 20 sec, the camera will confirm the selection by playing a sound according to the table above.

If nothing is selected, the camera will resume its normal boot process after a certain time.

Important Notes

Safety Warnings

Notes on Installing:

- This product must not be used in locations exposed to the dangers of explosion.
- Make sure that you install this product as outlined in the instructions of this Quick Install document. A faulty installation can damage the camera!
- When installing this product, make sure that you are only using genuine MOBOTIX parts and MOBOTIX connection cables.
- Only install this product on suitable, solid materials that provide for a sturdy installation of the fixing elements used.



**Network security:** MOBOTIX products include all of the necessary configuration options for operation in Ethernet networks in compliance with data protection laws. The operator is responsible for the data protection concept across the entire system. The basic settings required to prevent misuse can be configured in the software and are password-protected. This prevents unauthorized parties from accessing these settings.



**Electrical installation:** Electrical systems and equipment may only be installed, modified and maintained by a qualified electrician or under the direction and supervision of a qualified electrician in accordance with the applicable electrical guidelines. Make sure to properly set up all electrical connections.



**Electrical surges:** MOBOTIX cameras are protected against the effects of small electrical surges by numerous measures. These measures, however, cannot prevent the camera from being damaged when stronger electrical surges occur. Special care should be taken when installing the camera outside of buildings to ensure proper protection against **lightning**, since this also protects the building and the whole network infrastructure.



**Never touch the lens:** Due to the high performance of the i26, the area of the image sensor **can get quite hot**, especially when the ambient temperature is also high. This does not affect the proper functioning of the camera in any way. For this reason, the product must not be installed within the reach of persons.



**Power off before opening the camera:** Make sure the power supply to the camera is disconnected before opening the camera housing (e.g., when exchanging the SD card or when opening the body to attach wires).



Disposal

Electrical and electronic products contain many valuable materials. For this reason, we recommend that you dispose of MOBOTIX products at the end of their service life in accordance with all legal requirements and regulations (or deposit these products at a municipal collection center). MOBOTIX products must not be disposed of in household waste! If the product contains a battery, please dispose of the battery separately (the corresponding product manuals contain specific directions if the product contains a battery).



Disclaimer

MOBOTIX AG does not assume any responsibility for damages, which are the result of improper use or failure to comply to the manuals or the applicable rules and regulations. Our **General Terms and Conditions** apply. You can download the current version of the General Terms and Conditions from our website at [www.mobotix.com](http://www.mobotix.com) by clicking on the **COS** link at the bottom of every page.



Technical Specifications i26

<b>Model Variants</b>	<ul style="list-style-type: none"><li>• Mx-i26A-6D016/036 (daylight image sensor, color)</li><li>• Mx-i26A-6N016/036 (night image sensor, Black&amp;White)</li><li>• Mx-i26A-AU-6D016/036 (audio package, daylight image sensor, color)</li><li>• Mx-i26A-AU-6N016/036 (audio package, night image sensor, Black&amp;White)</li></ul>
<b>Lens Options</b>	<ul style="list-style-type: none"><li>• B016 (180° horizontal image angle)</li><li>• B036 (103° horizontal image angle)</li></ul>
<b>Sensitivity</b>	<ul style="list-style-type: none"><li>• Color sensor (daylight): 0.1 lx @ 1/60s; 0.005 lx @ 1s</li><li>• Black&amp;White sensor (night): 0.02 lx @ 1/60s; 0.001 lx @ 1s</li></ul>
<b>Image Sensor</b>	1/1.8" CMOS, 6MP (3072x2048), Progressive Scan
<b>Max. Image Size</b>	6MP (3072x2048)
<b>Image Formats</b>	Freely configurable 4:3, 8:3, 16:9 or custom formats (image cropping), e.g., 2592x1944 (5MP), 2048x1536 (QXGA), 1920x1080 (Full-HD), 1280x960 (MEGA)
<b>Max. Frame Rate</b>	<ul style="list-style-type: none"><li>• MxPEG: 42@HD(1280x720), 34@Full-HD, 24@QXGA, 15@5Mp, 12@6MP</li><li>• M-JPEG: 26@HD(1280x720), 13@Full-HD, 9@QXGA, 5@5Mp, 4@6MP</li><li>• H.264: 25@Full-HD, 20@QXGA</li></ul>
<b>Video Codec</b>	<ul style="list-style-type: none"><li>• MxPEG, M-JPEG, JPEG (max. output size 6MP)</li><li>• H.264 (max. output size QXGA, bandwidth limitation applicable)</li></ul>
<b>DVR</b>	<ul style="list-style-type: none"><li>• In the camera on MicroSD card (SDXC, SDHC pre-installed)</li><li>• External, on USB device</li><li>• External, on NAS</li><li>• Separate live image and full image recording – MxFFS with archiving function</li><li>• Pre- and post-alarm images</li><li>• Automatic DVR monitoring with error notification</li></ul>
<b>Software</b>	MxManagementCenter

<b>Image Processing</b>	MxLEO, backlight compensation, automatic white balance, distortion correction
<b>PTZ</b>	Digital pan/tilt/zoom, continuous up to 8X
<b>Alarm/Events</b>	Temperature sensor, shock detector (with firmware version 5.0.1 and higher), microphone (Mx-i26A-AU only), additional sensors/I/Os via MxMessageSystem, notification via e-mail, FTP, IP telephony (VoIP, SIP)
<b>Intelligent Video Analysis</b>	MxActivitySensor, video motion analysis, MxAnalytics
<b>Audio (only Mx-i26A-AU with audio package)</b>	<ul style="list-style-type: none"><li>• Microphone/speaker, both 16bit/16kHz (HD wideband audio)</li><li>• Lip-synchronous audio, audio recording</li><li>• VoIP/SIP telephony, intercom, remote controlling using key codes</li></ul>
<b>Interfaces</b>	Ethernet 100BaseT (MxRJ45), MiniUSB (MxMiniUSB)
<b>Security</b>	User/group management, HTTPS/SSL, IP address filter, IEEE 802.1x, intrusion detection, digital image signature, MxFFS
<b>Certifications</b>	EN55022:2010; EN55024:2010; EN55032:2012; EN50121-4:2015, EN61000-6-1:2007; EN 61000-6-2:2005, EN61000-6-3:2007+A1:2011, EN61000-6-4:2007+A1:2011, AS/ NZS CISPR22:2009+A1:2010, CFR47 FCC Part15B
<b>Power Supply</b>	Power over Ethernet IEEE 802.3af
<b>Power Consumption</b>	Typ. 4W
<b>Protection Classes</b>	IP30, IK06
<b>Ambient Temperature</b>	0 to 40 °C/32 to 122 °F
<b>Dimensions</b>	Outside diameter 120 mm/4.72 in, total height 51 mm/2.01 in with B016, 56 mm/2.21 in with B036, height installed 15 mm/0.59 in with B016, 20 mm/0.79 in with B036, cut-out diameter 105 mm/4.13 in, rec. min. installation depth 55 mm/2.17 in
<b>Weight</b>	Approx. 201 g

Dimensions/Drilling Template

