

MxInside

Exhibition Magazine

MOBOTIX
BeyondHumanVision



Hall 7, Booth 7B33 – 25 to 28 September 2018

During this year's international Security trade fair, MOBOTIX will showcase their innovative solutions in line with "Secure your business," the motto of Essen Security. This international trade fair for security and fire prevention is being held in Essen Germany, from 25 to 28 September 2018. MOBOTIX will provide an outlook of the latest hardware and software developments that will be available this year. The company will be in Hall 7, Booth 7B33, as MOBOTIX will be shining a spotlight on highly efficient partner solutions.



New MOBOTIX MOVE Camera Series

During this year's international Essen Security trade fair, MOBOTIX will showcase their innovative solutions in line with "Secure your business," the motto of Essen Security. This international trade fair for security and fire prevention is being held in Essen Germany, from 25 to 28 September

2018. MOBOTIX will provide an outlook of the latest hardware and software developments that will be available this year. The company will be in Hall 7, Booth 7B33, as MOBOTIX will be shining a spotlight on highly efficient partner solutions.

Cactus Concept: Certified Data Protection And Security

On top of existing technologies and the many cutting-edge innovations that MOBOTIX are exclusively presenting at Essen Security, the issue of cybersecurity is another important topic at the trade fair. MOBOTIX developed the unique

(and now also certified by SySS GmbH) Cactus Concept for the reliable and complete protection of end-to-end video systems against cyberattacks. MOBOTIX will demonstrate how to set up a more resilient and secure environment using

proven methods. That's why MOBOTIX video systems are among the most secure products of their kind in the world.

More information: www.cactusconcept.com

MxManagementCenter 2.0: The Most Powerful And Flexible MOBOTIX VMS Solution Ever

MxManagementCenter (MxMC) is the powerful, intuitive MOBOTIX video management system for Windows and macOS. The version 2.0, which is available free of charge despite extended standard features, marks a new milestone in the development history of MOBOTIX with its extended and, in some cases, licensed use and integration options. MxMC 2.0 will be available for download as of November 2018 with an optical facelift of controls and description of any new features / enhancements in the release notes on the MOBOTIX website.

That's new with MxMC 2.0:

- Partially licensed: Integration of MOBOTIX NAS and ONVIF-S cameras (MOBOTIX MOVE / third party)
- License subject: Extended configuration view - available free of charge until 31 December 2018!
- License subject: Extended system services including Health Check
- Royalty Free: Comprehensive online help with integrated search function

Integration of MOBOTIX NAS, MOBOTIX MOVE and third-party ONVIF-S cameras

With MxManagementCenter Version 2.0, in addition to the intelligent decentralized MOBOTIX IoT cameras, the MOBOTIX MOVE cameras, third-party ONVIF-S cameras (following the classic central system approach) and the new MOBOTIX NAS devices can be combined for the first time into a unique and compatible hybrid solution – for new application and integration purposes and extended tendering opportunities. If, in addition to the live images of the integrated ONVIF-S cameras, their recordings with MxMC 2.0 are to be displayed, a MOBOTIX NAS solution must also be integrated as the storage location for the ONVIF-S cameras.

MOBOTIX NAS Network Attached Storage Devices

Network recording for ONVIF-S cameras and decentralized MOBOTIX video systems in 3 variants (8/16/32 channels)

MOBOTIX is once again expanding its product range and from November 2018 will offer three high-quality NAS devices with different capacities for perfect integration into MxManagementCenter 2.0, the most powerful and flexible MOBOTIX VMS solution ever!

Network Attached Storage (NAS) makes it possible to centrally store and share the video and audio recordings of cameras in the network without the need for a computer or external hard disk. Basically, a NAS is a small computer (file server) with a processor, RAM, hard drives and its own operating system.

In addition to easy operation (also remotely), professional NAS devices with at least two slots for inserting hard disks offer increased data

security through hard disk redundancy (RAID). This means that if a hard drive fails, the data is not necessarily lost because it will always be stored on the rest of the NAS's hard drives and will continue to be available.

Due to its manageable costs, low maintenance, easy scalability and high data security, NAS systems are already the central storage system of choice in many smaller video systems with less than 10 cameras.

Why does MOBOTIX now offer its own NAS devices?

There are huge differences in the NAS systems of the various manufacturers available on the market. Devices with a weak processor by far do not offer the high transmission rates that would basically be available from the cable connection forth. There are also big differences in the range of functions. In order to ensure our customers the same MOBOTIX-proven premium product

quality in network storage, and because (only!) MOBOTIX NAS devices are equipped with special MxMC interface software, we provide central access to all camera recordings in connection with MxMC 2.0 from the decentralized MOBOTIX IoT cameras of the Mx6 series as well as ONVIF-S cameras of the MOBOTIX MOVE series and / or third-party ONVIF-S cameras.

The result: a highly efficient complete solution with secure data storage from a single source, which now allows decentralized and centralized video components to be easily combined. The numerous product advantages of the intelligent MOBOTIX IoT cameras (such as MxAnalytics or MxActivitySensor) are completely retained, while each MxMC workstation can now also be supplemented with the special functions of, for example, a mechanical HighSpeed PTZ camera. Simple and without any programming effort feasible!



MOBOTIX NAS
2-Bay/8 Channels



MOBOTIX NAS
4-Bay/16 Channels



MOBOTIX NAS
8-Bay/32 Channels

New Functions For MOBOTIX Thermal Imaging Cameras

With the new event Thermal Range, an upper and lower temperature threshold can now be entered at the same time to make it even easier to configure a permissible range (until now, two

individual events had to be created for this purpose). As a basis for integration into external software, the temperature raw data and xy coordinates of hotspots are transmitted to the

camera in the JPEG header. Application example Industry 4.0: Control of industrial processes and recording of temperature profiles.

MOBOTIX IP Video Door Station: Even More Powerful As A T26

The T26 with the latest Mx6 platform is here and the MOBOTIX product range of intelligent IoT systems is now complete! Outwardly unchanged compared to the T25 predecessor models, the innovations take place in the inner workings. The change to the Mx6 dual core microprocessor technology offers above all an increase in performance, which benefits all computer-intensive image analysis functions such as MxAnalytics and thus enables higher frame rates.

Market opening with the industry standard ONVIF-S

The T26 camera platform also meets the requirements of the global, open interface standard ONVIF-S. In addition to the video codecs MxPEG and MJPEG, an H.264 stream can now also be generated. This makes MOBOTIX customers

much more flexible and efficient when planning security solutions from individual components (cameras, recording devices, accessories, VM software).

Flexibility as a special advantage

Hardly any other manufacturer offers as many combination and usage options as MOBOTIX. Our Hemispheric Video Technology once again forms the centerpiece of the high-resolution T26. The modular system enables secure, keyless door opening via access code, RFID transponder and smartphone. In combination with several door stations, cameras and additional devices, individual access solutions of any size can be realized simply and inexpensively thanks to the IP standard.

Free App MxBell 2.0 makes the T26 door station even smarter

Do not miss a visitor thanks to push notification! MxBell displays the doorbell message of the new T26 IP Video Door Station on the smartphone or tablet. Open the door with it and use the intercom function. Check the last door station and camera recordings in Playback view. With automatic camera detection, secure remote connection over SSL and display of connection status.

MxBell 2.0 is available for free from the App Store and the Google Play Store (iOS 8 / Android 4.4+).



Industry Solutions From MOBOTIX Partners At The Booth

The new, even more customer-oriented orientation of MOBOTIX is also reflected in the joint solutions with the MOBOTIX technology partners, which are shown directly at the MOBOTIX booth.

Konica Minolta: 3D LiDAR (Model MLS-24)



KONICA MINOLTA

- Securely detect intruders by 3D object sensing
- Monitor facilities with wide range robust sensing
- Reduce workload of security staff

Secure Sensing by LiDAR: By unique gapless multiline scanning, our 3D LiDAR detects suspicious intruders and objects with less false alarm rate. It improves security system quality, while reducing workload of security staffs.

Efficient Monitoring with MOBOTIX Camera: By integrating MOBOTIX cameras, LiDAR data provides effective triggers to classify video data. User can easily pickup important scenes that need to be paid attention to from an enormous amount of video data.

The image is a composite illustrating the 3D LiDAR security solution. On the left, a close-up shows the 'Sensor set' which includes an Mx Camera, Mx Input-Box, and 3D LiDAR. In the center, a 3D simulation of a warehouse shows a 'Monitoring Area' defined by a red wireframe box. A person in a blue uniform is walking through this area, and a green arrow points towards them. A large red 'WARNING' sign is visible in the background. A speech bubble next to the monitoring area says: 'Trigger an alarm when someone enters a monitoring area.' On the bottom left, a 'System Configuration' diagram shows the 'Sensor set' connected to a 'Server' via a 'Network HUB'. The connections are: Mx Camera to Mx Input-Box (MxBUS), Mx Input-Box to 3D LiDAR (Contact signal), and both Sensor set and Network HUB to Server (Ethernet).



Genetec will showcase the latest features of its unified, IP-based solution Security Center 5.7, including a scalable video management system (VMS) that adapts to the growing needs of the security market, and advanced features for personal data and privacy protection. They help users meet the requirements of the General Data Protection Regulation (GDPR). A new reporting feature also alerts system administrators in case of outdated camera firmware. Genetec will also showcase its Streamvault portfolio, turnkey security appliances for rack, workstation and storage, on which Security Center is pre-installed. Streamvault also includes the KiwiVision Privacy Protector, a certified GDPR-compliant data protection solution. Additionally Genetec will present the access control solution Synergis and Genetec Mission Control, the collaborative decision support solution for physical security incidents.

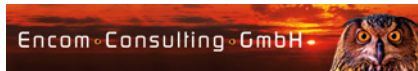


Ipsotek is the world leader in Scenario-Based Video Analytics

software solutions. Their patented scenario-based rule engine combined with cognitive algorithms is proven to dramatically reduce false alarm rates and improve organisational security and safety through automated video analysis. Ipsotek's proven analytics are deployed globally within a wide range of industries including airports, transportation, critical infrastructure, government, city surveillance, commercial and more.

Ipsotek's applications within the commercial and public sectors offer a wide range of capabilities from real-time video analysis to high quality business and intelligent reporting.





Encom Consulting GmbH has added another layer to the world of security. After three years of in-house development, their bullet- and explosives (bombs e.g.) resistant cameras are now able to endure direct hard-core-projectile Kalashnikov fire from 10 meters distance, as well as 1 kg PETN/Semtex explosions at 2 meters distance. Being able to provide reliable footage, even during and after an attack, they are the perfect solution for embassies, banks, military, police stations and football / soccer stadiums (vandal resistance).

DX7 extreme: this newly developed nitrogen oxide sensor DX7-NOX and Environment enables the camera to measure pollution, temperature and wind speed without mechanical parts. A highly compact NOx and environmental measuring station at low energy consumption, purpose designed and optimised for traffic infrastructure and the avoidance of traffic bans.

Our brand-new and highly innovative DX7 Pan-and-Tilt System has been specifically built for all MOBOTIX Cameras of the M- and S-Series. Built-in PoE Supply and browser access for remote control. Two lighting units can provide the entire range from Infra-red, White-Light to RGB-variations. 360° endless pan at 60°/s, 128 presets, 4 programmable tours.



Durchführung eines Explosionstest mit 1 KG Nitropenta/Semtex aus 2 m Entfernung. Die MOBOTIX Kamera ist noch funktionstüchtig.

IBC

ELUMO 5G – Smart & Modular LED-Streetlamp with Mobotix-Cam

Low cost access to WEB via glass fiber or radio connection with a 5G Base station in the range of high-density small cells. With LTE 4.0 standard LTE Speeds on 3.75 GHz and a Cloud Radio Access over optical fiber. The Streetlamp includes a Mobotix camera with speaker and microphone and VMS-based analytics software Mx-ManagementCenter. The camera modules allow also Object Based Motion Detection, Heat-Map, Direction Detection, People Counting and Activity-Control. The functions include also free-Wi-Fi, parking-slot recognition, emergency-call service and commercials on flat screen TV. A modular-structure allows also charger for smart e-scooters or e-automobiles with a RFID-Reader and call-button. The mounted payment-gateway makes the booking easy via Mobil phone.

5G Street Lamp – ELUMO





‘BrandFRÜHST’ Fire Detection with MOBOTIX Radiometry Cameras

With MOBOTIX Thermal TR cameras, complete early fire detection solutions, that enable the fastest possible response measures, are available to help prevent large scale damage. These solutions are used in the waste industry in the monitoring of machinery, industrial processes, storage areas and other applications. The system monitors temperature increases over a long period of time and can provide warning signals before damage occurs. Although the cameras are highly sensitive, false alarms are reliably prevented by the logic of the entire system.

After an event detection, the alarm is processed in the fire alarm control panel in order to initiate appropriate measures. This can happen in predefined stages from the control center warning to the main alarm with automatic control of the extinguishing system. In addition, fire monitors can be integrated into the system to help target extinguishing a fire for example, with as little water damage as possible.



Intel® Coffee Lake-S CPU + NVIDIA GPU

ATC8010, powerful and reliable Artificial Intelligence (AI) platform, is specially designed for the applications, such as ANPR, AFR and highly-demanding on graphic performance. Its updated Intel®Coffee Lake desktop 35W CPU, and NVIDIA 1050Ti graphic card guarantees the graphic performance, which satisfies with most of the automated intelligent requirements. 8-Port 802.3af/at PoE, offers wide bandwidth and precise control to the analysis of big video data. Besides, ultraONE+ technology commits the transmission of video and audio, up to 10 meters distance. 5 x HDMI and 1 x VGA let users monitor the immediate video without any delay and blind spot. RAID 0, 1, 5, 10 guarantees the safety of video data in the 2 x external SSD, and 2 x mSATA. The design of swappable fans makes it easier to maintain.



Peter Communication Systems GmbH is providing its customer, the public services company of the city of Aschaffenburg an all-in-one solution to upgrade their 51 city busses with public WiFi, video surveillance and GPS geolocation. Consisting of several standard components, amongst others a MOBOTIX S16 DualFlex camera with SurroundMount, the pre-assembled mounting kit can be installed by the customer in its bus-garage. The solution is standing out by a seamless integration of the implemented components. It delivers a perfect symbiosis of free WiFi, which is reducing radiation power („electro-smog“) inside the bus, while providing enhanced security for guests and driver and improving bus schedules by precise geolocation. The unique solution supersedes most conventional standalone products by integrating into the city’s existing public WiFi-network as well as the customer’s video surveillance infrastructure.



ipvCloud Retail Analytics

The stationary trade sees itself increasingly harassed by online stores. An essential advantage of online shopping is that the website operators have detailed information about the individual shopping behavior of their customers. Up to now, this information can only be obtained statistically through expensive and labor-intensive customer monitoring in stationary retailing.

ipvCloud Retail Analytics is a web portal that will analyze video data in real time with innovative machine learning algorithms in order to determine the shopping channels of individual customers in stationary stores. By means of statistical analysis and predictive algorithms, these paths are used to offer dealers and customers additional added value during the shopping process. Thus, ipvCloud Retail Analytics enables brick-and-mortar retailers to compensate for the current disadvantage compared with online retailing and thus remain competitive in the long term.

SEDI Technology Made in Germany has been supplying innovative safety technology products for 10 years. For years, finding solutions has been our daily business. Whether in-house development or in cooperation with other companies, special solutions or small series we always strive to deliver the best solution.

PT5 Pan Tilt Unit for MOBOTIX cameras:

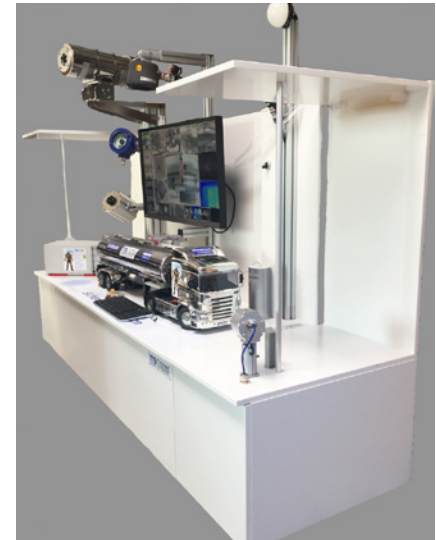
- Precision 12VDC stepper motors
- No mechanical stops due to sliding contacts
- 360 degrees horizontal and -80 to +13 degrees
- Programming of endless tours

PI2CARE – the NEW Generation of Monitoring for MOBOTIX Cameras:

License on board to check an entire installation of cameras against issues. A daily rapport can be generated and send out by mail with all necessary information about the cameras. The integrated Service Monitor actualises every 3 seconds and gives a smart overview of working or non-working cameras. The PI2Care works in complete isolated Networks. Setup the PI2CARE is easy and fast.

Explosion Proof Cameras

With the example of the Save Loading Station the TecTradeSolution GmbH shows an IOT-Industry 4.0 solution with explosion proof cameras. It covers all aspects from supporting employees with visual images, lone worker protection, process monitoring, risk prediction and finally intercommunication with the process control system. Thermal as well as standard visual cameras are used likewise in EX (explosion hazardous areas) and tough Non-EX areas. Additional modules, like a loading documentation, can be appended or used separately.

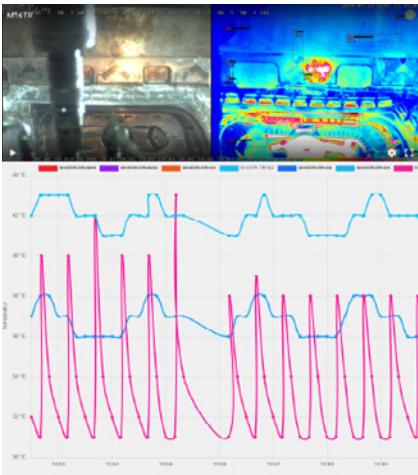




Thermal Cameras as a Temperature Measuring Sensor in an Industrial Environment

The uniserve GmbH presents a process for monitoring with temperature alarms as well as linking this process with their proprietary process management system.

New possibilities for thermal process monitoring can be realized with the possibility of measuring temperatures directly and without contact at several defined points or in large scaled areas. In contrast to sporadic thermal control measurements, permanently mounted thermal cameras can be used to document and control industrial processes (such as die casting, extrusion, drop forging, welding, ...) during the ongoing process. Individual measuring windows and temperature alarms are stored in the image via the MOBOTIX thermal cameras. The results can be transferred directly to the process control department. In addition, the long-term recording also makes it possible to subsequently reproduce temperature evaluations or, for example, evaluating thermal temperature spikes. The systems are also used for quality assurance, since data can be collected for individual working equipment.



Access control using license plate recognition is used today in a wide variety of areas such as access to factory premises, in security zones, petrol stations, parking garages or fleet management. In addition to the obvious safety aspect, comfort also plays an increasingly important role for motorists. As a specialist for this sensitive area, VALEO IT Neteye GmbH is certified as CAR-READER Advanced Partner with the highest partner status. The access control procedures by license plate recognition are based on methods of image processing.

Thanks to complex algorithms, the digitized images of a video camera are evaluated according to license plate information in order to be able to use the data automatically for different applications. The advantages are many and varied, ranging from the rapid handling of entries and exits to the simpler management of parking space capacities.



Beyond Human Vision

The MOBOTIX Unique Selling Point Is Our Complete Package Of Technology, Innovation And Quality.

We combine each of these elements to create a high-quality complete solution, offering you maximum flexibility plus a highly engineered tool set so you can solve problems as efficiently and reliably as possible. Here at MOBOTIX, we look beyond the human perspective so that we can start preparing you for tomorrow today.



**Security
Essen**

25 – 28 September

**it-sa
Nürnberg**

9 – 11 October

**UK
Construction
Week**

9 – 11 October

**Expoprotection
Paris**

6 – 8 November

**belektro
Berlin**

6 – 8 November

**Matelec
Industry
Madrid**

13 – 16 November

EN_09/18

MOBOTIX AG

Kaiserstrasse
D-67722 Langmeil
Tel.: +49 6302 9816-0
Fax: +49 6302 9816-190
www.mobotix.com

About MOBOTIX

MOBOTIX IP video technology is used around the world. These systems provide protection and offer absolute reliability, even when used in the most challenging of conditions. They help scientists and researchers in places ranging from offshore platforms in the North Sea, to UNESCO World Heritage sites in the far-off deserts, to research bases in the Arctic, and they even greet mountain climbers on the peak of Mt. Everest. MOBOTIX products are designed without using moving parts in order to attain the best return on investment possible. Regularly released software updates accomplish this feat and improve on it, while ensuring an above-average operating time for the products.