

Guideline

MOBOTIX MxAnalytics App

© 2020 MOBOTIX AG

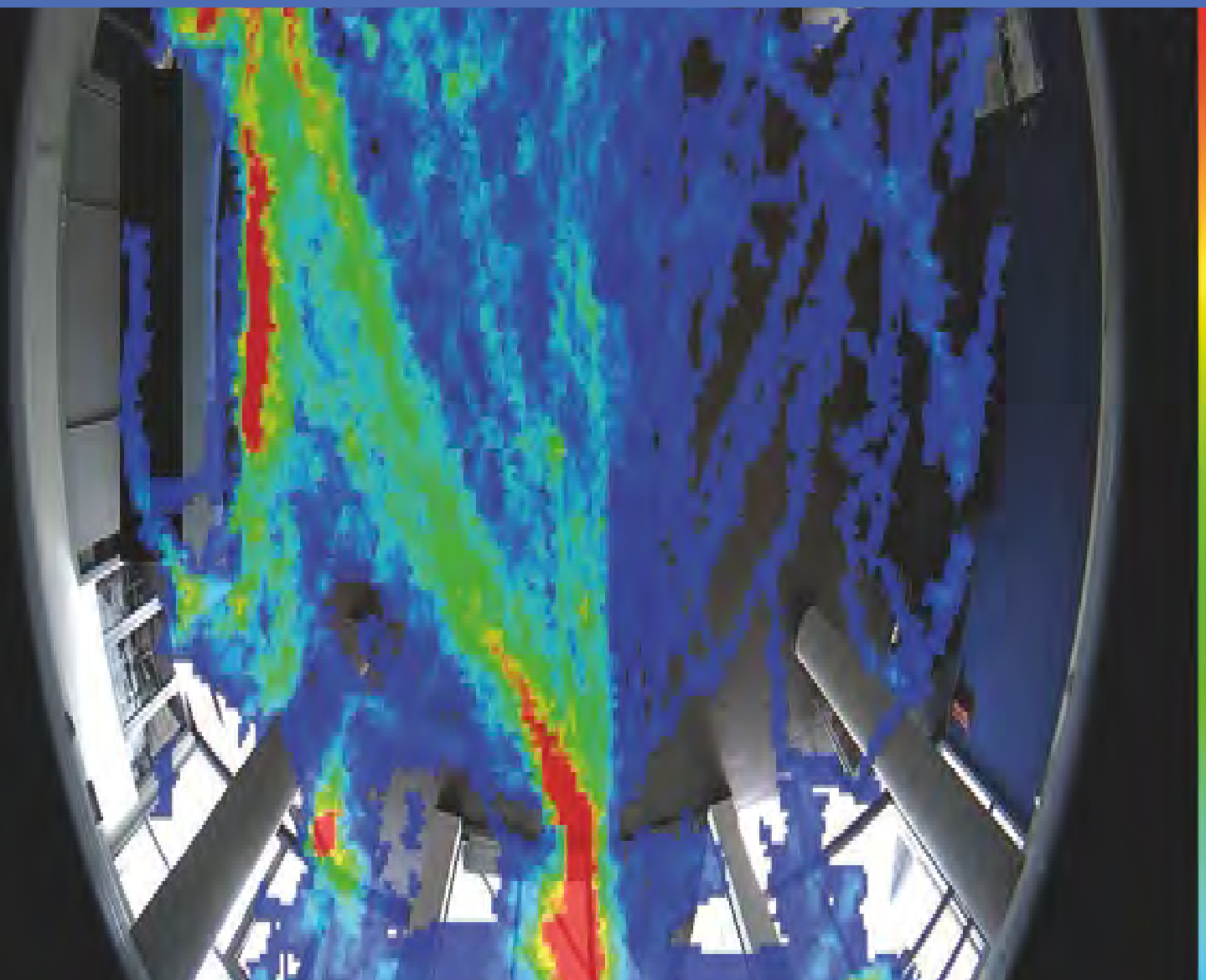


Table of Contents

Table of Contents	2
Support	3
Imprint	5
Legal Notes	6
About MxAnalytics App	8
Motion Detection, Object Counting, Heat Mapping	8
Technical Specifications	9
Licensing Certified Apps	11
Managing Licenses in MxManagementCenter	11
Activation of the Certified App Interface	18
Configuration of MxAnalytics App	19
About MxMessageSystem	25
What is MxMessageSystem?	25
Facts about MxMessages	25
Basic configuration: Processing the automatically generated app events	26
Advanced Configuration: Processing the meta data transmitted by apps	30

Support

If you need technical support, please contact your MOBOTIX dealer. If your dealer cannot help you, he will contact the support channel to get an answer for you as quickly as possible.

If you have internet access, you can open the MOBOTIX help desk to find additional information and software updates. Please visit:

www.mobotix.com > [Support](#) > [Help Desk](#)



Imprint

This document is part of the camera manufactured by MOBOTIX AG (called manufacturer in the following); the document describes how to use and to configure the camera and its components.

Subject to change without notice.

Copyright Information

This document is protected by copyright. Passing on information to others is not permitted without the prior written consent of the manufacturer. Violations will be subject to criminal punishment.

Patent and Copy Protection

All rights reserved. Trademarks or registered trademarks belong to the corresponding owners.

Address

MOBOTIX AG
Kaiserstrasse
67722 Langmeil
Germany
Phone: +49 6302 9816-103
E-Mail: sales@mobotix.com
Internet: www.mobotix.com

Support

See [Support](#), p. 3.

Legal Notes

Special Export Regulations!

Cameras with thermal image sensors ("thermal cameras") are subject to the special export regulations of the U.S.A. and including the ITAR (International Traffic in Arms Regulation):

- According to the currently applicable export regulations of the U.S.A. and the ITAR, cameras with thermal image sensors or parts thereof must not be exported to countries embargoed by the U.S.A., except if a special permit can be presented. At present, this applies to the following countries: Syria, Iran, Cuba, North Korea, Sudan and Krim. The same export ban applies to all persons and institutions listed in "The Denied Persons List" (see www.bis.doc.gov, "Policy Guidance > Lists of Parties of Concern"; <https://www.treasury.gov/resource-center/sanctions/sdn-list/pages/default.aspx>).
- Under no circumstances must the camera itself or its thermal image sensors be used in the design, the development or in the production of nuclear, biological or chemical weapons or in the weapons themselves.

Legal aspects of video and sound recording:

You must comply with all data protection regulations for video and sound monitoring when using MOBOTIX AG products. Depending on national laws and the installation location of the MxAnalytics App, the recording of video and sound data may be subject to special documentation or it may be prohibited. All users of MOBOTIX products are therefore required to familiarize themselves with all applicable regulations and to comply with these laws. MOBOTIX AG is not liable for any illegal use of its products.

Declaration of Conformity

The products of MOBOTIX AG are certified according to the applicable regulations of the EC and other countries. You can find the declarations of conformity for the products of MOBOTIX AG on www.mobotix.com under Support > Download Center > Certificates & Declarations of Conformity.

RoHS Declaration

The products of MOBOTIX AG are in full compliance with European Unions Restrictions of the Use of Certain Hazardous Substances in Electrical and Electronic Equipment (RoHS Directive 2011/65/EC) as far as they are subject to these regulations (for the RoHS Declaration of MOBOTIX, please see www.mobotix.com, Support > Download Center > Documentation > Brochures & Guides > Certificates).

Disposal

Electrical and electronic products contain many valuable materials. For this reason, we recommend that you dispose of MOBOTIX products at the end of their service life in accordance with all legal requirements and regulations (or deposit these products at a municipal collection center). MOBOTIX products must not be disposed of in household waste! If the product contains a battery, please dispose of the battery separately (the

corresponding product manuals contain specific directions if the product contains a battery).

Disclaimer

MOBOTIX AG does not assume any responsibility for damages, which are the result of improper use or failure to comply to the manuals or the applicable rules and regulations. Our General Terms and Conditions apply. You can download the current version of the **General Terms and Conditions** from our website at www.mobotix.com by clicking on the corresponding link at the bottom of every page.

About MxAnalytics App

Motion Detection, Object Counting, Heat Mapping

MxAnalytics App collects behavioral data on individuals and objects. Detection zones are defined and counting corridors defined for this purpose. The camera then records how often the object has passed through each counting corridor within a certain period of time. In a heat map, the most frequented locations in the detection area color-coded.

In a heat map, the most frequented locations in the detection are color-coded. Furthermore movements in defined restricted areas can be detected.

- Free of charge and license-free, unlimited use with any MOBOTIX 7 camera
- Motion detection in (defined) restricted areas
- Person/object counting based on motion detection (optional: accumulated)
- Creates Heatmaps
- Auto-generated counting and heat map reports

Best suited for the requirements of the following industries:

Utilities, Energy & Mining; Industry & Production, Government, Traffic & Transportation, Retail, Healthcare, Education & Science

Technical Specifications

Product Information

Product Name	MxAnalytics App
Supported MOBOTIX Cameras	Mx-M73A, Mx-S74A
Minimum Camera Firmware	V7.0.6.x
MxManagementCenter Integration	- min.MxMC v2.4 - Advanced Config license required

Product Features

App Features	Available Analytics Features: <ul style="list-style-type: none">■ People / Object Counting■ Heatmap■ Restricted Area (Motion Detection) Other features of the app: <ul style="list-style-type: none">■ time table to enable MxAnalytics only within defined schedules (e.g. opening hours)■ auto-generated people / object counting reports■ auto-generated heatmap reports■ MOBOTIX events via MxMessageSystem
Maximum number of detection areas	20
Maximum number of counting corridors	16
Maximum number of restricted areas	20
Supported image sensor types	Day, Night, Day/Night
Dual / Multi Sensor usage	Yes
MxMessageSystem supported	Yes

Technical Specifications

Motion Detection, Object Counting, Heat Mapping

Report export formats Counting reports: CSV and HTML (table view)
Heatmap reports: JPEG

MOBOTIX events Yes

ONVIF Events *

Scene Requirements

Recommended camera position ceiling mounted (recommended), wall mounted

Recommended installation height (camera) 2,5 - 10 m (depending on lens variant)

Recommended viewing angle on object +- 30° (ceiling mount perspective)

Minimum object size 250px

Technical App Specifications

Synchronous / Asynchronous App Asynchronous

Accuracy Typ. 97% (considering scene & technical requirements)

Processed number of frames per second Typ. 20 fps

* available with updates in future

Licensing Certified Apps

The following licenses are available for the MxAnalytics App:

- **30-day test license** pre-installed
- **1 year commercial license**
- **2 year commercial license**

The usage period begins with activation of the app (see [Activation of the Certified App Interface](#), p. 18).

Note

For buying or renewing a license please contact your MOBOTIX Partner.

Note

Apps are usually pre-installed with the firmware. In rare cases, apps must be downloaded from the website and installed. In this case see www.mobotix.com > [Support](#) > [Download Center](#) > [Marketing & Documentation](#), download and install the app.

Managing Licenses in MxManagementCenter

After a test period commercial licenses must be activated for use with a valid license key.

Activation of Certified Apps and events

Online-Activation

After receiving the activation IDs, activate them in MxMC as follows:

1. Select from the menu **Window > Camera App Licenses**.
2. Select the camera on which you want to license apps and click **Select**.

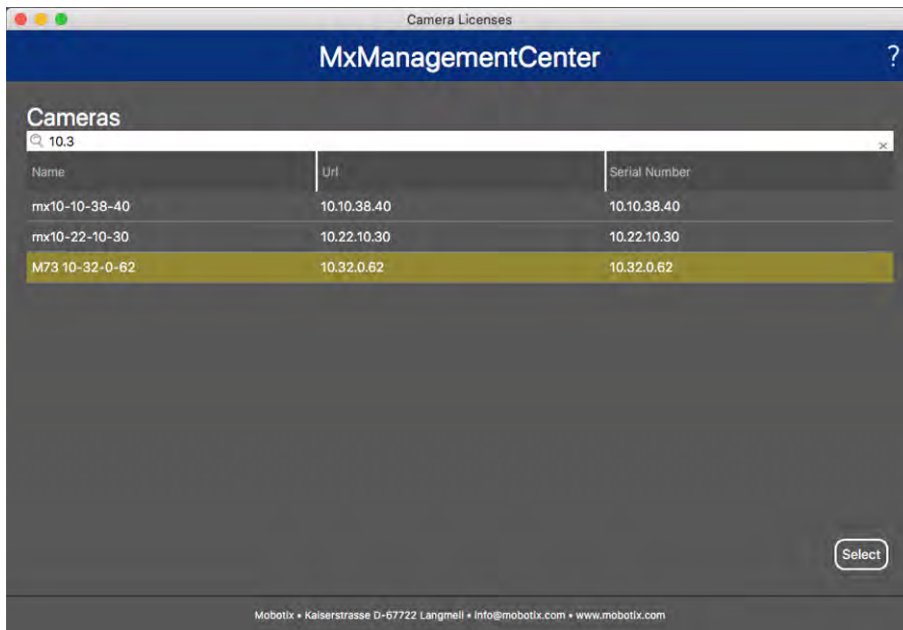


Fig. 1: Overview of Camera App Licenses in MxManagementCenter

Note

If necessary, correct the time set on the camera.

- An overview of the licenses installed on the camera may be displayed. Click **Activate License**.

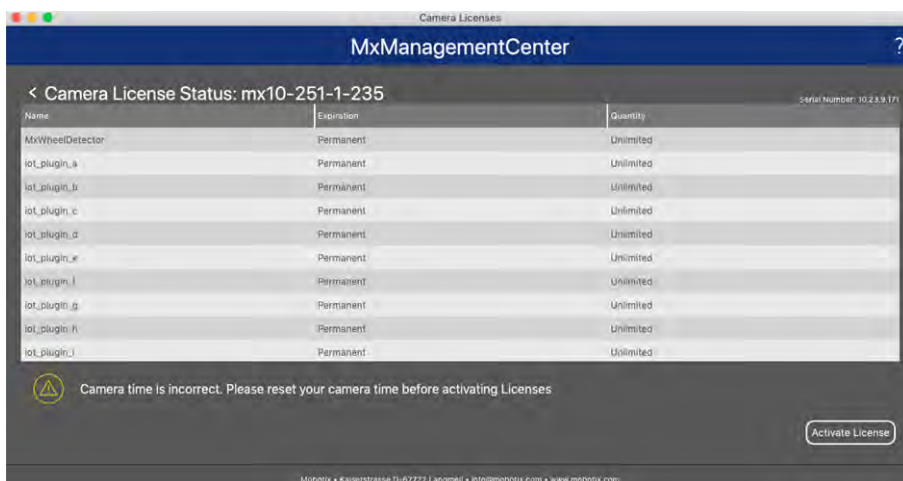


Fig. 2: Overview of the licenses installed on the camera

Note

If necessary, correct the time set on the camera.

- Enter a valid Activation ID and specify the number of licenses to install on this computer.
- If you want to license another product, click on **+**. In the new row, enter the appropriate Activation ID and the number of licenses you want.
- To remove a line click **🗑**.

- When you have entered all Activation IDs, click **Activate License Online**. During activation, **MxMC** connects to the license server. This requires an Internet connection.

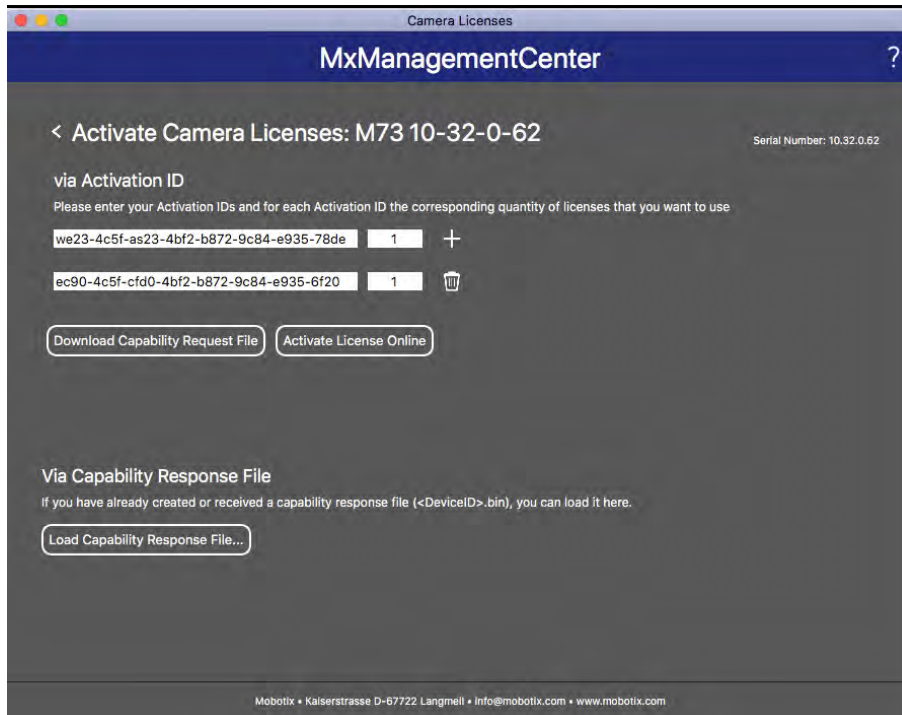


Fig. 3: Adding licenses

Successful activation

After successful activation, a new log in is required to apply the changes. Alternatively, you can return to license management.

Failed activation (missing internet connection)

If the license server cannot be reached, e.g. due to a missing internet connection, apps can also be activated offline. (see [Offline Activation](#), p. 13).

Offline Activation

For offline activation, the partner/installer from whom you purchased the licenses can generate a capability response (.bin file) on the license server to activate their licenses.

- Select from the menu **Window > Camera App Licenses**.
- Select the camera on which you want to license apps and click **Select**.

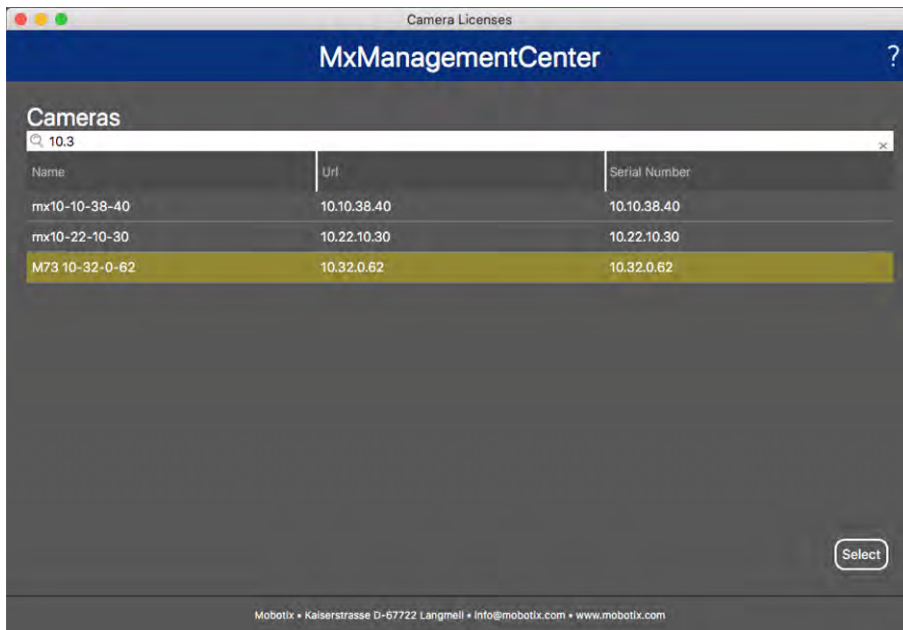


Fig. 4: Overview of Camera App Licenses in MxManagementCenter

Note

If necessary, correct the time set on the camera.

- An overview of the licenses installed on the camera may be displayed. Click **Activate License**.



Fig. 5: Overview of the licenses installed on the camera

Note

If necessary, correct the time set on the camera.

- Enter a valid Activation ID and specify the number of licenses to install on this computer.
- If you want to license another product, click on **+**. In the new row, enter the appropriate **Activation ID** and the number of licenses you want.
- If necessary, click **🗑** to remove a line.

- When you have entered all Activation IDs, click **Download Capability Request File (.lic)**, and send it to your partner/installer.

Note

This file allows the partner/installer from whom you purchased the licenses to generate a capability response file (.bin) on the license server.

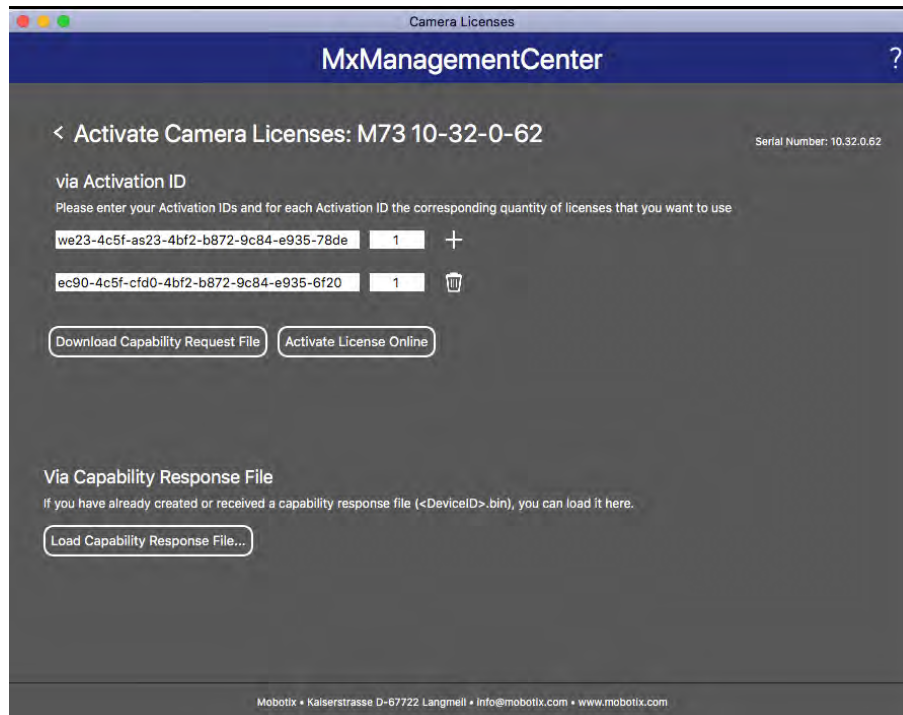


Fig. 6: Adding licenses

- Click Load Capability Response File and follow the instructions.

Successful activation

After successful activation, a new log in is required to apply the changes. Alternatively, you can return to license management.

Manage licenses

In the license management screen, you get a tabular overview of all licenses that have been activated for a camera.

- Select from the menu **Window > Camera App Licenses**.
- Select the camera on which you want to license apps and click **Select**.

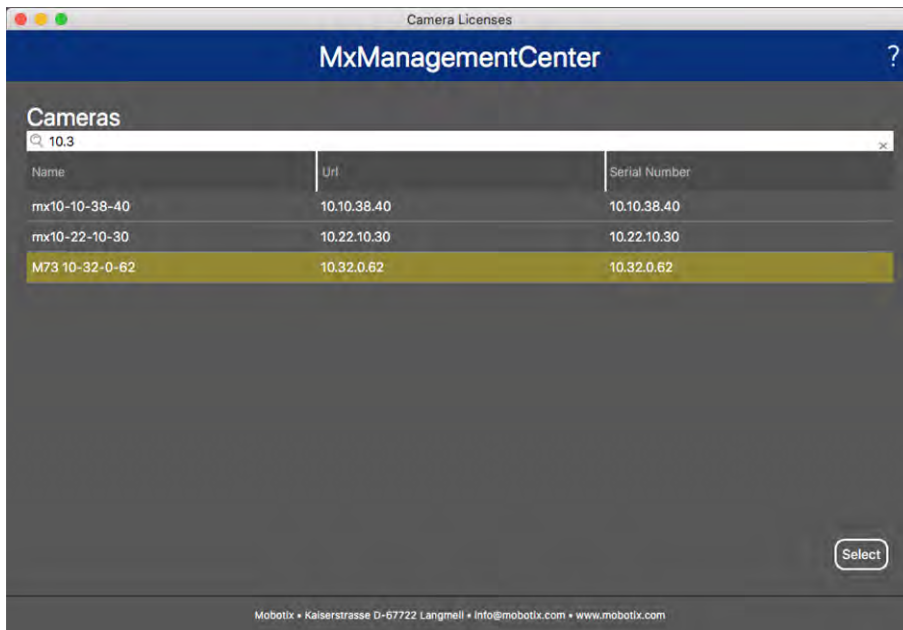


Fig. 7: Overview of Camera App Licenses in MxManagementCenter

An overview of the licenses installed on the camera may be displayed.



Fig. 8: Overview of the licenses installed on the camera

Note

If necessary, correct the time set on the camera.

Column	Explanation
Name	Name of the licensed app
Expiration	the time limit of the license
Quantity	Number of licenses purchased for a product.
Serial Number	Unique identification determined by MxMC for the device used. If problems occur during licensing, please have the device ID ready.

Synchronize licenses with server

When the program starts, there is no automatic comparison of the licenses between the computer and the license server. Therefore, click **Update** to reload the licenses from the server.

Update licenses

To update temporary licenses, click **Activate Licenses**. The dialog for updating/activating licenses opens.

Note

You need administrator rights to synchronize and update licenses.

Activation of the Certified App Interface

Attention

The MxAnalytics App does not consider obscure areas defined for the live image. Therefore there is no pixelation in obscure areas while configuring the app and during image analysis by the app.

Note

The user must have access to the setup menu ([http\(s\)://<Camera IP address>/control](http(s)://<Camera IP address>/control)). Therefore check the user rights of the camera.

Activation of Certified Apps and events

1. In the camera web interface, open: **Setup Menu / Certified App Settings** ([http\(s\)://<Camera IP address>/control/app_config](http(s)://<Camera IP address>/control/app_config)).

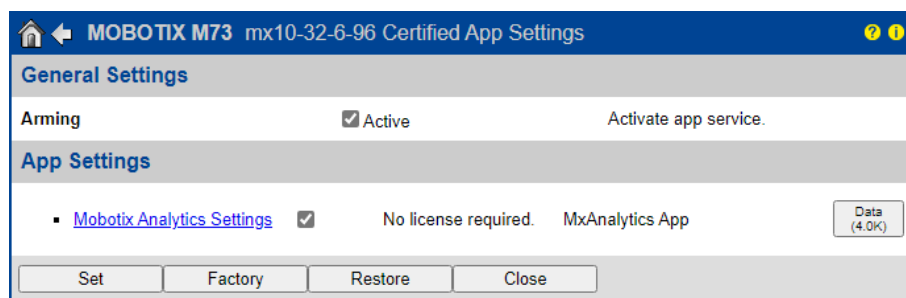


Fig. 9: Certified App: Settings

2. Under **General Settings** activate the **Arming** of the MOBOTIX interface (see screenshot).
3. Under **App Settings** check the **Active** option
4. Click on the name of the App to be configured to open the Apps user interface.
5. For configuration of the App see [Configuration of MxAnalytics App, p. 19](#).

Configuration of MxAnalytics App

Attention

The user must have access to the setup menu ([http\(s\)://<Camera IP address>/control](http(s)://<Camera IP address>/control)). Therefore check the user rights of the camera.

1. In the camera web interface, open: **Setup Menu / Certified App Settings** ([http\(s\)://<Camera IP address>/control/app_config](http(s)://<Camera IP address>/control/app_config)).
2. Click on the name of the **MxAnalytics App**.

The configuration window of the app appears with the following options:

Basic settings

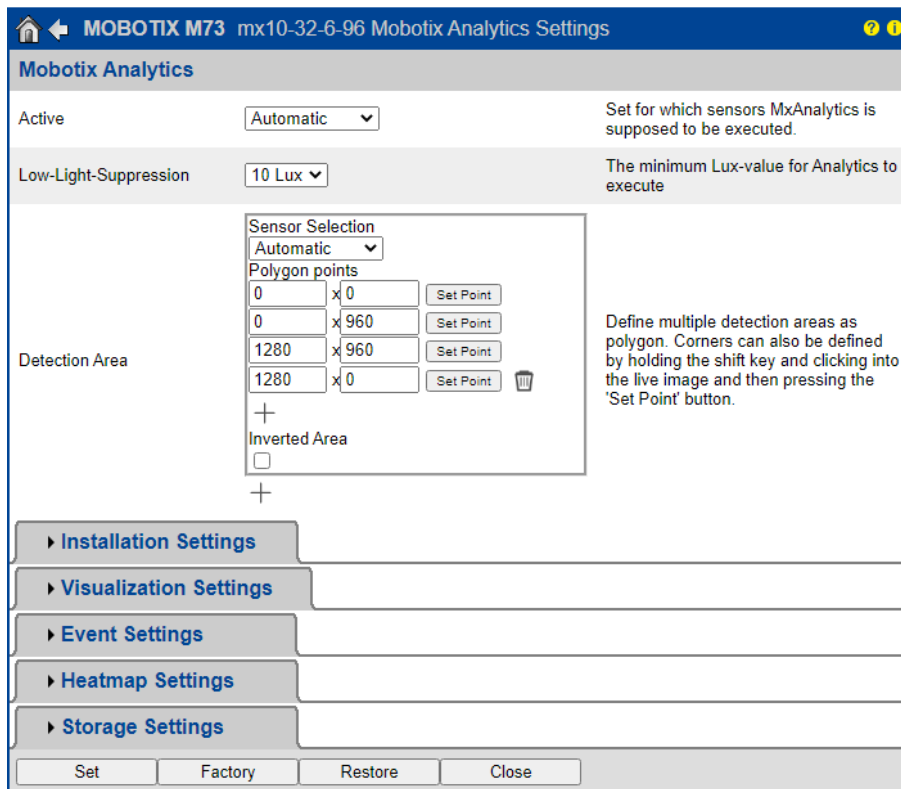


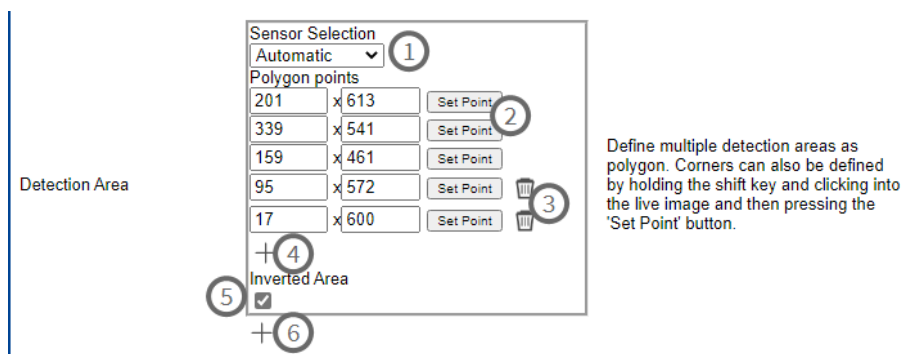
Fig. 10: Basic settings

Active: Select the sensors to be used by the MxAnalytics App.

Low-Light -Supression: Select the minimum lux value for MxAnalytics App to execute.

Detection Area: You can define multiple detection areas as polygon by defining the corner points. Corners can also be defined by holding the shift key and clicking into the live image and then pressing the **Set Point** button.

Drawing a Detection Area



1. Select the sensors to be used for the detection area
2. In the live view hold the **Shift** key and click a corner point of the detection area.
3. In the configuration interface click **Set Point (2)** to adopt the coordinates of the corner point.
4. Repeat steps 2 and 3 to define the next corner points.
5. Optionally click the **bin icon (3)** to delete a zone.
6. Optionally click the **plus icon (4)** to define another corner point.
7. Optionally check **Inverted Area icon (5)** to delete a zone.
8. Optionally click the **plus icon (6)** to define another Detection Area.

Installation settings

For best analytics results camera position as well as the object size need to be specified as accurate as possible.

▼ Installation Settings	
Mounting height	<input type="text" value="250"/> Mounting height of the camera [150..1000cm]
Mounting angle	<input type="text" value="-90"/> Tilt angle of the camera in degrees [-90°.90°]. Installation on/in the ceiling corresponds to -90°, installation on/in the wall corresponds to 0°.
Minimum object size	<input type="text" value="2500"/> Minimum size of objects in pixels [250..250000].
Set minimum object size	<input type="button" value="Set size"/> Define a rectangle in the live-image with [shift-click] + [click] and press this button to set the minimum object size. Note that the rectangle must be a bit smaller than the object to be recognized.

Fig. 11: Installation settings

Mounting height: Mounting height of the camera (150- 1000cm)

Mounting angle: Tilt angle of the camera in degrees [-90°- 90°]. Installation on/in the ceiling corresponds to -90°, installation on/in the wall corresponds to 0°.

Minimum object size: Minimum size of objects in pixels (250 - 250000)

Set minimum object size: In the live image define a rectangle with [shift-click] + [click] and press this button to set the minimum object size.

Note

the rectangle must be a bit smaller than the object to be recognized.

Visualization Settings

Define how the MxAnalytics App objects look in the live image:

Visualization Settings		
Display detection areas	<input checked="" type="checkbox"/>	Whether to show the detection areas in the live-image
Display counting corridors	<input checked="" type="checkbox"/>	Whether to show the counting corridors in the live-image
Display restricted areas	<input checked="" type="checkbox"/>	Whether to show the restricted areas in the live-image
Bounding box color	<input type="text" value="blue"/>	Choose the color of the bounding boxes
Object track color	<input type="text" value="green"/>	Choose the color of the object tracks
Object halo color	<input type="text" value="off"/>	Choose the color of the object halos
Object halo transparency	<input type="text" value="60"/>	The transparency of the object halo in percent

Fig. 12: Visualization settings

Display detection areas: Check to show the detection areas in the live image.

Display counting corridors: Check to show counting corridors in the live image.

Display restricted areas: Check to show restricted areas in the live image.

Bounding box color: Select a bounding box color for detected objects.

Object track color: Select a color for the tracking path of detected objects.

Object halo color: Select a color for the object halos.

Object halo transparency: Enter a transparency value in percent for the object halos.

Event settings

Within the detection areas you can define counting corridors and restricted areas.

Event Settings

Counting Corridors

Sensor Selection: Automatic

First Entrance: 880 x 400 [Set Point]

First Exit: 880 x 560 [Set Point]

Second Entrance: 400 x 400 [Set Point]

Second Exit: 400 x 560 [Set Point]

Corridor ID: 1

Counting Label: All

Corridor name: []

[]

+

Restricted Area

Sensor Selection: Automatic

Polygon points:

400 x 300 [Set Point]

400 x 660 [Set Point]

880 x 660 [Set Point]

880 x 300 [Set Point] []

+

Area ID: 1

Area Label: All

[]

+

List of counting corridors.

Define multiple restricted areas as polygon. Corners can also be defined by holding the shift key and clicking into the live image and then pressing the 'Set Point' button.

Fig. 13: Event settings

Adding a counting corridor

Counting Corridors

Sensor Selection: Automatic

First Entrance: 880 x 400 [Set Point]

First Exit: 880 x 560 [Set Point]

Second Entrance: 400 x 400 [Set Point]

Second Exit: 400 x 560 [Set Point]

Corridor ID: 1

Counting Label: Person

Corridor name: Main Corridor

[]

+

List of counting corridors.

Fig. 14: Adding a counting corridor

1. Select the same sensor as selected in the basic settings.
2. Define the **Entrance points** and **Exit points** of the corridor
 - In the live view hold the **Shift** key and click a corner point of the Entrance/Exit point.
 - In the configuration interface click **Set Point** to adopt the coordinates of the corner point.
 - Repeat steps 2 and 3 to define the next corner points.
3. Set a unique **corridor ID**.
4. Select a counting label to make sure only select objects will be counted.
5. Enter an unique **Corridor name**.
6. Optionally click the **bin icon (3)** to delete a corridor.
7. Optionally click the **plus icon (4)** to define another corner point.

Adding a restricted area

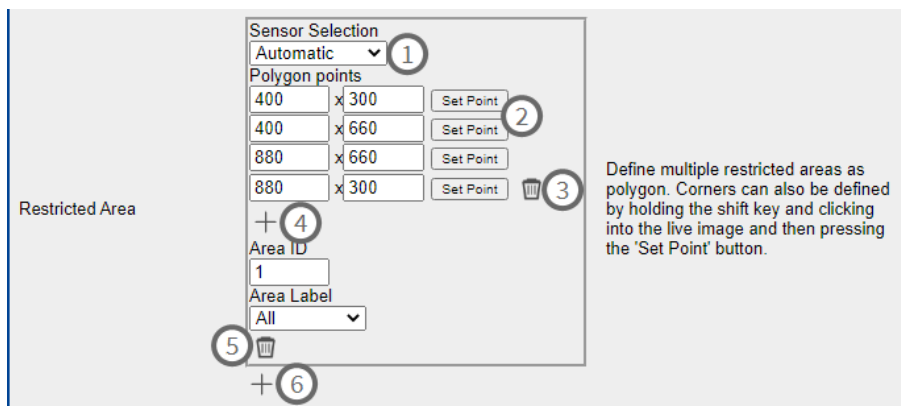


Fig. 15: Adding a restricted area

1. **Select the same sensor (1)** as selected in the basic settings.
2. In the live view hold the **Shift** key and click a corner point of the restricted area.
3. In the configuration interface click **Set Point (2)** to adopt the coordinates of the corner point.
4. Repeat steps 2 and 3 to define the next corner points.
5. Optionally click the **bin icon (3)** to delete a corner point.
6. Optionally click the **plus icon (4)** to define another corner point.
7. Enter an unique **area ID**.
8. Select an **area label** to make sure only select objects will be detected as restricted.
9. Optionally click the **bin icon (5)** to delete a Restricted Area.
10. Optionally click the **plus icon (6)** to define another Restricted Area.

Heatmap Settings

In this section you can define heatmap settings e. g. for crowd analytics.

Heatmap Settings		
Heatmap Label	All	Choose for which type of objects the heatmap should be generated.
Display heatmap preview	<input type="checkbox"/>	Shows a low resolution preview of the heatmap in the live-image. High performance impact and interfering with other visualizations. Use for testing purposes only.
Display heatmap legend	<input type="checkbox"/>	Shows the heatmap legend to the right of the live-image
Heatmap minimum percentage	0	Set minimum value to visualize in percent. The current minimum value will be used, if 0 is selected.
Heatmap maximum percentage	100	Set maximum value to visualize in percent. The current maximum value will be used, if 100 is selected.
Ignore still objects	<input type="checkbox"/>	When activated, objects that are standing still will not contribute to the heatmap.
Still object threshold	10	The number of seconds an object needs to be standing still in order to not contribute to the heatmap anymore.

Fig. 16: Heatmap settings

Heatmap Label: Select a heatmap label to make sure only select objects will be used to generate a heatmap.

Display heatmap preview: Check for testing purposes only. Shows a low resolution preview of the heatmap in the live-image. High performance impact and interfering with other visualizations. Use for testing purposes only.

Display heatmap legend: Check to show the heatmap legend to the right of the live-image.

Heatmap minimum percentage: Set the minimum value to visualize in percent. The current minimum value will be used, if 0 is selected.

Heatmap maximum percentage: Set the maximum value to visualize in percent. The current maximum value will be used, if 100 is selected.

Ignore still objects: Check that objects that are standing still will not contribute to the heatmap.

Still object threshold: The number of seconds an object needs to be standing still in order to not contribute to the heatmap anymore.

Storage Settings

Edit how long heatmap and corridor data should be stored:

Storage Settings		
Maximum stored data age	90	Heatmap and corridor data older than this number of days is being deleted from the local storage.
Clear Data	Clear Data	Deletes all heatmap and corridor data
Store Data	Store Data	Writes the current heatmap and corridor data to the local storage

Fig. 17: Storage settings

Maximum storage data age: Enter the number of days after heatmap and corridor data are being deleted from the local storage.

Clear data: Click to delete all heatmap and corridor data.

Store data: Click to write the current heatmap and corridor data to the local storage.

About MxMessageSystem

What is MxMessageSystem?

MxMessageSystem is a communication system based on name oriented messages. This means that a message must have a unique name with a maximum length of 32 bytes.

Each participant can send and receive messages. MOBOTIX cameras can also forward messages within the local network. This way, MxMessages can be distributed over the entire local network (see Message Area: Global).

For example, a MOBOTIX 7 series camera can exchange an MxMessage generated by a camera app with an Mx6 camera that does not support certified MOBOTIX apps.

Facts about MxMessages

- 128-bit encryption ensures privacy and security of message content.
- MxMessages can be distributed from any camera of the Mx6 and 7 series.
- The message range can be defined individually for each MxMessage.
 - **Local:** Camera expects an MxMessage within its own camera system (e.g. through a Certified App).
 - **Global:** the camera expects an MxMessage that is distributed in the local network by another MxMessage device (e.g. another camera of the MOBOTIX 7 series equipped with a certified MOBOTIX app).
- Actions that the recipients are to perform are configured individually for each participant of the MxMessageSystem.

Basic configuration: Processing the automatically generated app events

Checking automatically generated app events

After successfully activating the app (see [Activation of the Certified App Interface, p. 18](#)), a generic message event for this specific app is automatically generated in the camera.

- To check the event go to **Setup-Menu / Event Control / Event Overview**.
- The automatically generated message event profile is named after the application (e. g. MxAnalytics).

The screenshot shows the 'Message Events' configuration page for a MOBOTIX M73 camera. The page is titled 'MOBOTIX M73 mx10-32-6-96 Message Events'. It features a table with columns for 'Attribute', 'Value', and 'Explanation'. Below the table, there are two event profiles: 'FFLPR' and 'MxAnalytics'. The 'MxAnalytics' profile is expanded, showing its configuration details. The 'Event Sensor Type' is set to 'MxMessageSystem'. The 'Event on receiving a message from the MxMessageSystem' is configured with a 'Message Name' of 'MxAnalytics', a 'Message Range' of 'Local', and a 'Filter Message Content' of 'No Filter'. The 'Event Dead Time' is set to 5 seconds.

Attribute	Value	Explanation
IP Receive	8000	Port: TCP port to listen on.

Events	Value	Explanation
FFLPR		<input type="checkbox"/> Inactive <input type="checkbox"/> Delete
MxAnalytics		<input type="checkbox"/> Inactive <input type="checkbox"/> Delete

Event Dead Time:
Time to wait [0..3600 s] before the event can trigger anew.

Event Sensor Type:
Choose the message sensor.

Event on receiving a message from the MxMessageSystem.

Message Name:
Defines an MxMessageSystem name to wait for.

Message Range:
There are two different ranges of message distribution:
Global: across all cameras within the current LAN.
Local: camera internal.

Filter Message Content:
Optionally choose how to ignore messages containing *Filter Value*. Select *No Filter* to trigger on any message with defined *Message Name*.

Fig. 18: Example: Generic message event from MxAnalytics App

Action handling - Configuration of an action group

To use events, trigger action groups or record images the general arming of the camera must be enabled ([http\(s\)/<Camera IP address>/control/settings](http(s)/<Camera IP address>/control/settings))

An action group defines which action(s) is (are) triggered by the MxAnalytics App event.

1. In the camera web interface, open: **Setup Menu / Action Group Overview** ([http\(s\)://<Camera IP address>/control/actions](http(s)://<Camera IP address>/control/actions)).

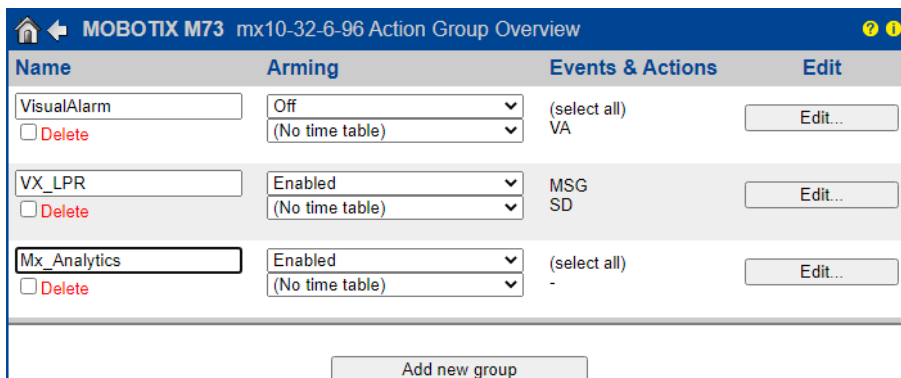


Fig. 19: Defining Action Groups

- Click **Add new group** and give a meaningful name.
- Click **Edit**, to configure the group.

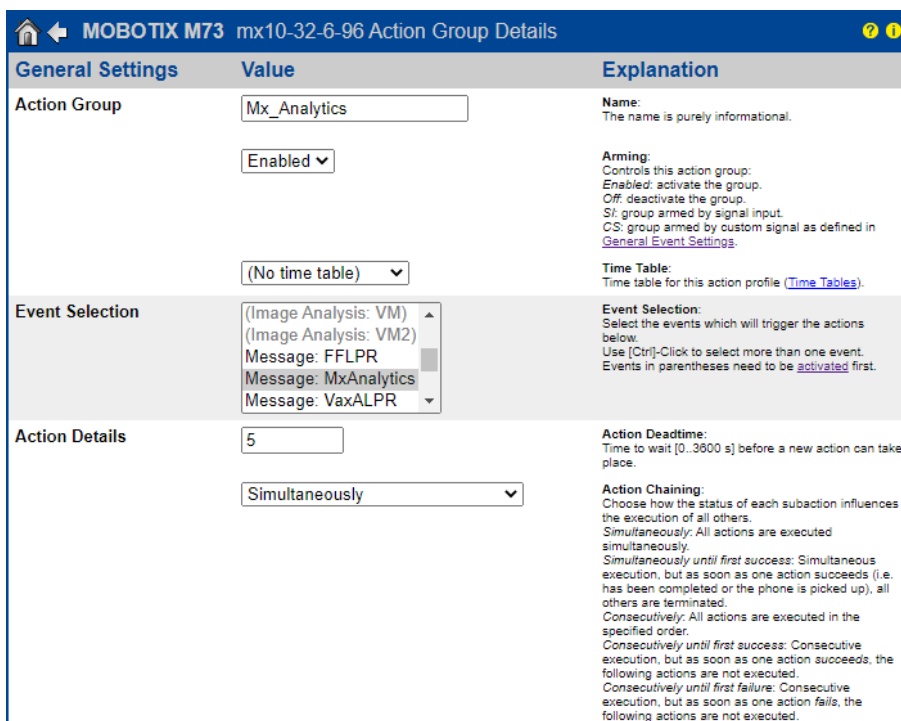


Fig. 20: Configuring an Action Group

1. Activate **Arming** of the Action Group.
2. Select your message event in the **Event selection** list. To select multiple events, press the shift key.
3. Click **Add new Action**
4. Select a proper action from list **Action Type and Profile**.

Basic configuration: Processing the automatically generated app events

Facts about MxMessages

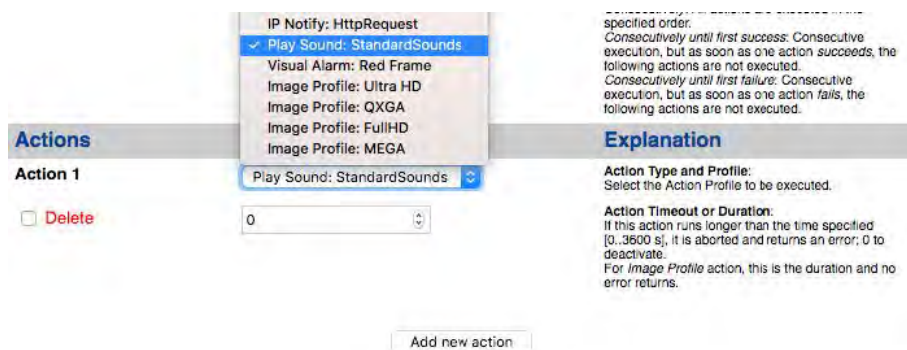


Fig. 21: Select Action Type- and Profile

Note

If the required action profile is not yet available, you can create a new profile in the Admin Menu sections "MxMessageSystem", "Transfer Profiles" and "Audio and VoIP Telephony".

Note

If necessary, you can add further actions by clicking the button again. In this case, please make sure that the "action chaining" is configured correctly (e.g. at the same time).

5. Click on the **Set** button at the end of the dialog box to confirm the settings.

Action settings - Configuration of the camera recordings

1. In the camera web interface, open: **Setup Menu / Event Control / Recording**([http\(s\)/<Camera IP address>/control/recording](http(s)/<Camera IP address>/control/recording)).

Storage Settings	Value	Explanation
Recording (REC)	Event Recording	Recording Mode: Type of event and story recording. <i>Snap Shot Recording:</i> stores single JPEG pictures. <i>Event Recording:</i> stores stream files for every event using MxPEG codec. <i>Continuous Recording:</i> continuously streams video data to stream files using MxPEG codec. Events can be recorded with a higher frame rate using <i>Start Recording</i> , <i>Retrigger Recording</i> and <i>Stop Recording</i> .
Start Recording	(Image Analysis: VM) (Image Analysis: VM2) Message: FFLPR Message: MxAnalytics Message: VaxALPR Max fps 2 8 s	Start Recording: Select the events which will start recording. Use [Ctrl]-Click to select more than one event. Events in parentheses need to be <i>activated</i> first. Event Frame Rate: Recording speed if an event is detected, in frames per second. Recording Time Before Event: Additional recording time before an event in seconds. Recording Time: Time to include in recorded stream after an event has occurred.

Fig. 22: Configuration of camera recording settings

2. Activate **Arm Recording**.
3. Under **Storage Settings / Recording (REC)** select a **Recording mode**. The following modes are available:
 - Snap Shot Recording
 - Event Recording

- Continuous Recording

4. In list **Start recording** select the message event just created.
5. Click on the **Set** button at the end of the dialog box to confirm the settings.
6. Click on **Close** to save your settings permanently.

Note

Alternatively, you can save your settings in the Admin menu under Configuration / Save current configuration to permanent memory.

Advanced Configuration: Processing the meta data transmitted by apps

Meta data transferred within the MxMessageSystem

For each event, the app also transfers meta data to the camera. This data is sent in the form of a JSON schema within an MxMessage.

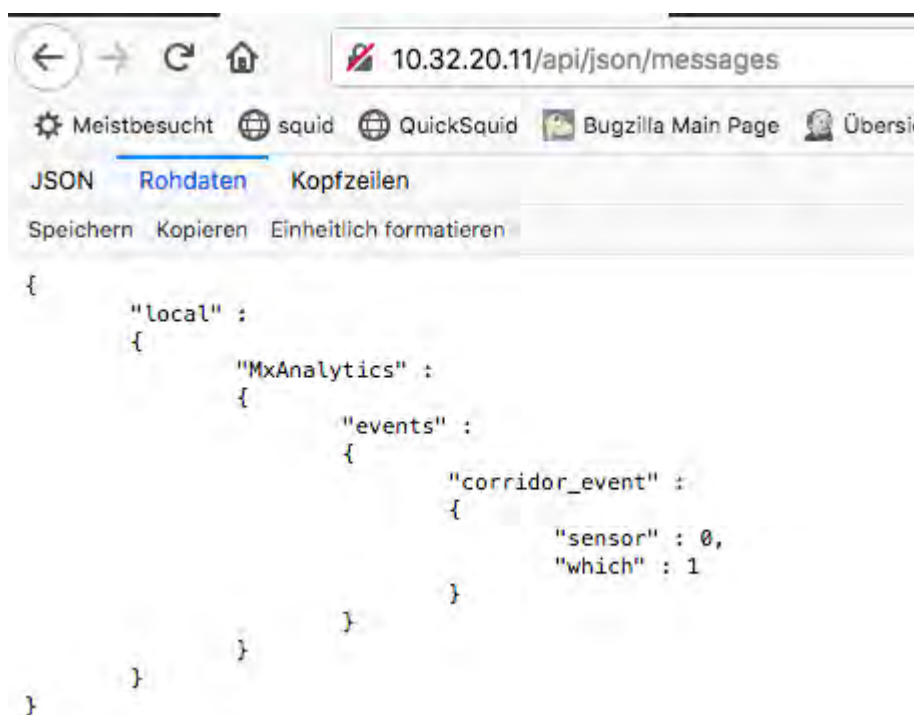


Fig. 23: Example: Meta data transmitted within an MxMessage of the MxAnalytics App

Note

To view the meta data structure of the last App event, open the following URL in a web browser: [http\(s\)://IPAdresseOfYourCamera/api/json/messages](http(s)://IPAdresseOfYourCamera/api/json/messages)

Creating a Custom Message Event

1. In the camera web interface, open: **Setup Menu / Event Control / Event Overview**
([http\(s\)://<Camera IP address>/control/event_msg](http(s)://<Camera IP address>/control/event_msg))

Fig. 24: Configuration of a user-defined event

2. Configure the parameters of the event profile as follows:

- **Profile Name:** Enter an event related / application related profile name that illustrates the purpose of the profile.
- **Message Name:** Enter the "Message Name" according to the event documentation of the corresponding app (see table [Examples for message names and filter values of the MxAnalytics App, p. 32](#) below)
- **Message Range:**
 - Local: Default settings for the MxAnalytics App
 - Global: (MxMessage is forwarded from another MOBOTIX camera in the local network.
- **Filter Message Content:**
 - Generic Event: "No Filter"
 - Filtered Event: "JSON Equal Compare"

Filter Value: see table [Examples for message names and filter values of the MxAnalytics App, p. 32](#).

Attention

"Filter Value" is used to differentiate the MxMessages of an app / bundle. Use this entry to benefit from individual event types of the apps (if available).

Choose "No Filter" if you want to use all incoming MxMessages as generic event of the related app.

2. Click on the **Set** button at the end of the dialog box to confirm the settings.

Examples for message names and filter values of the MxAnalytics App

MxMessage Name	Filter Value	Explanation
MxAnalytics.events.corridor_event		Message at each corridor increment
MxAnalytics.events.restricted_event		Message on each triggering of a Restricted Area
MxAnalytics	"sensor":0	Filter message by sensor (in this case sensor 0)
MxAnalytics	"which":5	Filter message by corridor or restricted area ID (in this case 5)
ObjRec	"numObjects":[^\0]	Message if any object is found in the image
ObjRec	"car"	Message when a car is detected in the image
ObjRec	"object3"	Message if at least 3 arbitrary objects were found in the image
ObjRec	^([\^]*"person"){4}	Message, if at least 4 persons were found