



Guideline

MOBOTIX VAXTOR License Plate Recognition App

© 2020 MOBOTIX AG



BeyondHumanVision

MOBOTIX

V1.05_11/17/2020 Order Code: Mx-APP-VX-LPR

Table of Contents

Table of Contents	2
Support	3
Imprint	5
Legal Notes	6
About VAXTOR License Plate Recognition App	8
Certified App for License Plate Recognition	8
Technical Specifications	9
Licensing Certified Apps	11
Managing Licenses in MxManagementCenter	11
Camera, image and scene requirements	18
Recommendations on mounting and adjusting.	21
Troubleshooting	22
Activation of the Certified App Interface	26
Configuration of VAXTOR License Plate Recognition App	27
About MxMessageSystem	38
What is MxMessageSystem?	38
Facts about MxMessages	38
Basic configuration: Processing the automatically generated app events	39

Support

If you need technical support, please contact your MOBOTIX dealer. If your dealer cannot help you, he will contact the support channel to get an answer for you as quickly as possible.

If you have internet access, you can open the MOBOTIX help desk to find additional information and software updates. Please visit:

www.mobotix.com > **Support** > **Help Desk**



Imprint

This document is part of the camera manufactured by MOBOTIX AG (called manufacturer in the following); the document describes how to use and to configure the camera and its components.

Subject to change without notice.

Copyright Information

This document is protected by copyright. Passing on information to others is not permitted without the prior written consent of the manufacturer. Violations will be subject to criminal punishment.

Patent and Copy Protection

All rights reserved. Trademarks or registered trademarks belong to the corresponding owners.

Address

MOBOTIX AG
Kaiserstrasse
67722 Langmeil
Germany
Phone: +49 6302 9816-103
E-Mail: sales@mobotix.com
Internet: www.mobotix.com

Support

See [Support](#), p. 3.

Legal Notes

Special Export Regulations!

Cameras with thermal image sensors ("thermal cameras") are subject to the special export regulations of the U.S.A. and including the ITAR (International Traffic in Arms Regulation):

- According to the currently applicable export regulations of the U.S.A. and the ITAR, cameras with thermal image sensors or parts thereof must not be exported to countries embargoed by the U.S.A., except if a special permit can be presented. At present, this applies to the following countries: Syria, Iran, Cuba, North Korea, Sudan and Krim. The same export ban applies to all persons and institutions listed in "The Denied Persons List" (see www.bis.doc.gov, "Policy Guidance > Lists of Parties of Concern"; <https://www.treasury.gov/resource-center/sanctions/sdn-list/pages/default.aspx>).
- Under no circumstances must the camera itself or its thermal image sensors be used in the design, the development or in the production of nuclear, biological or chemical weapons or in the weapons themselves.

Legal aspects of video and sound recording:

You must comply with all data protection regulations for video and sound monitoring when using MOBOTIX AG products. Depending on national laws and the installation location of the VAXTOR License Plate Recognition App, the recording of video and sound data may be subject to special documentation or it may be prohibited. All users of MOBOTIX products are therefore required to familiarize themselves with all applicable regulations and to comply with these laws. MOBOTIX AG is not liable for any illegal use of its products.

Declaration of Conformity

The products of MOBOTIX AG are certified according to the applicable regulations of the EC and other countries. You can find the declarations of conformity for the products of MOBOTIX AG on www.mobotix.com under Support > Download Center > Certificates & Declarations of Conformity.

RoHS Declaration

The products of MOBOTIX AG are in full compliance with European Unions Restrictions of the Use of Certain Hazardous Substances in Electrical and Electronic Equipment (RoHS Directive 2011/65/EC) as far as they are subject to these regulations (for the RoHS Declaration of MOBOTIX, please see www.mobotix.com, Support > Download Center > Documentation > Brochures & Guides > Certificates).

Disposal

Electrical and electronic products contain many valuable materials. For this reason, we recommend that you dispose of MOBOTIX products at the end of their service life in accordance with all legal requirements and regulations (or deposit these products at a municipal collection center). MOBOTIX products must not be disposed of in household waste! If the product contains a battery, please dispose of the battery separately (the

corresponding product manuals contain specific directions if the product contains a battery).

Disclaimer

MOBOTIX AG does not assume any responsibility for damages, which are the result of improper use or failure to comply to the manuals or the applicable rules and regulations. Our General Terms and Conditions apply. You can download the current version of the **General Terms and Conditions** from our website at www.mobotix.com by clicking on the corresponding link at the bottom of every page.

About VAXTOR License Plate Recognition App

Certified App for License Plate Recognition

LPR (License Plate Recognition) is an image processing technology used to identify vehicles by their license plates. It is also known as ALPR (Automatic License Plate Recognition) and ANPR (Automatic Number Plate Recognition) among other names.

The app's artificial intelligence-based algorithms, which have already been successfully tested in numerous European markets, allow the reliable recognition of single and two-line license plates of vehicles in the supported regions of origin (Latin and Hebrew characters and numbers). The app can be tested free of charge for 30 days and is activated by license for an unlimited period of time. Typical application areas for the app are: Parking management, access control and regulation, traffic monitoring.

- App delivers events via MxMessageSystem in real-time
- Integrated recognition protocol (last 1000 recognized license plates)
- Detection with at least 99 % accuracy (depending on environmental conditions)
- Camera can be online or offline
- Configuration of the application also via MxManagementCenter (free Advanced Config license required)
- Can be used with all cameras of the MOBOTIX 7 system platform

Technical Specifications

Product Information

Product Name	VAXTOR License Plate Recognition App
Order Code	Mx-APP-VX-LPR
Supported MOBOTIX Cameras	Mx-M73A, Mx-S74A
Minimum Camera Firmware	V7.0.4.x
MxManagementCenter Integration	min. MxMC v2.3.1

Product Features

App Features	<ul style="list-style-type: none">■ License plate recognition of one- and two-line license plates■ Latin, Hebrew and Arabic characters■ Recognition log (last 1000 recognized license plates)■ MOBOTIX events via MxMessageSystem■ Global country coverage■ White- and blacklisting
Maximum number of lanes	3
Meta Data / Statistic formats	JSON, CSV
Trial License	30-day trial license pre-installed
MxMessageSystem supported	Yes
Interfaces	MxMC Smart Data, IP Notification
MOBOTIX Events	Yes
ONVIF Events	*

Supported Regions

Supported license plates	https://community.mobotix.com/t/vaxtor-lpr-app-supported-license-plates-countries
--------------------------	---

Scene Requirements

Character Height	20px - 50px (depending on the plate type)
Maximum Vertical Angle	30°
Maximum Horizontal Angle	< 25°
Maximum Tilt Angle	< 25°

Technical App Specifications

MOBOTIX App support	Yes
Synchronous / Asynchronous App	Asynchronous
Accuracy	Min. 99% (considering scene requirements)
Processed number of frames per second	Typ. 10 fps
Detection time	Typ. 100 – 120 ms

* available with updates in future

Licensing Certified Apps

The following licenses are available for the VAXTOR License Plate Recognition App:

- **30-day test license** pre-installed
- **permanent license**

The usage period begins with activation of the app (see [Activation of the Certified App Interface](#), p. 26).

Note

For buying or renewing a license please contact your MOBOTIX Partner.

Note

Apps are usually pre-installed with the firmware. In rare cases, apps must be downloaded from the website and installed. In this case see www.mobotix.com > [Support](#) > [Download Center](#) > [Marketing & Documentation](#), download and install the app.

Managing Licenses in MxManagementCenter

After a test period commercial licenses must be activated for use with a valid license key.

Activation of Certified Apps and events

Online-Activation

After receiving the activation IDs, activate them in MxMC as follows:

1. Select from the menu **Window > Camera App Licenses**.
2. Select the camera on which you want to license apps and click **Select**.

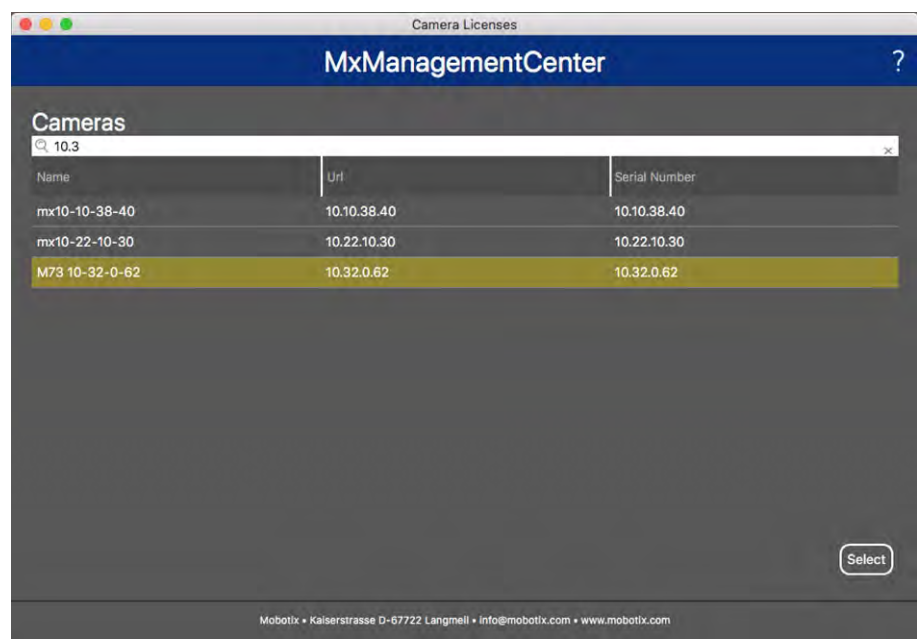


Fig. 1: Overview of Camera App Licenses in MxManagementCenter

Note

If necessary, correct the time set on the camera.

1. An overview of the licenses installed on the camera may be displayed. Click **Activate License**.

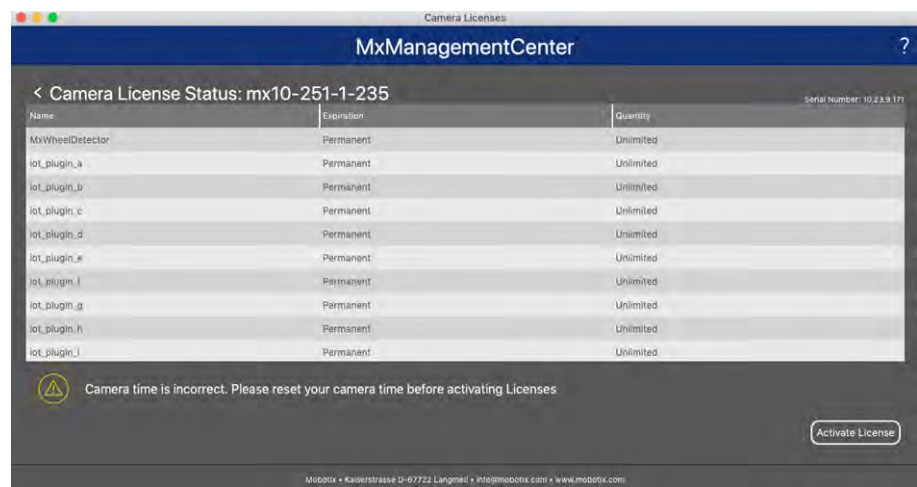


Fig. 2: Overview of the licenses installed on the camera

Note

If necessary, correct the time set on the camera.

2. Enter a valid Activation ID and specify the number of licenses to install on this computer.
3. If you want to license another product, click on . In the new row, enter the appropriate Activation ID and the number of licenses you want.
4. To remove a line click .

- When you have entered all Activation IDs, click **Activate License Online**. During activation, **MxMC** connects to the license server. This requires an Internet connection.

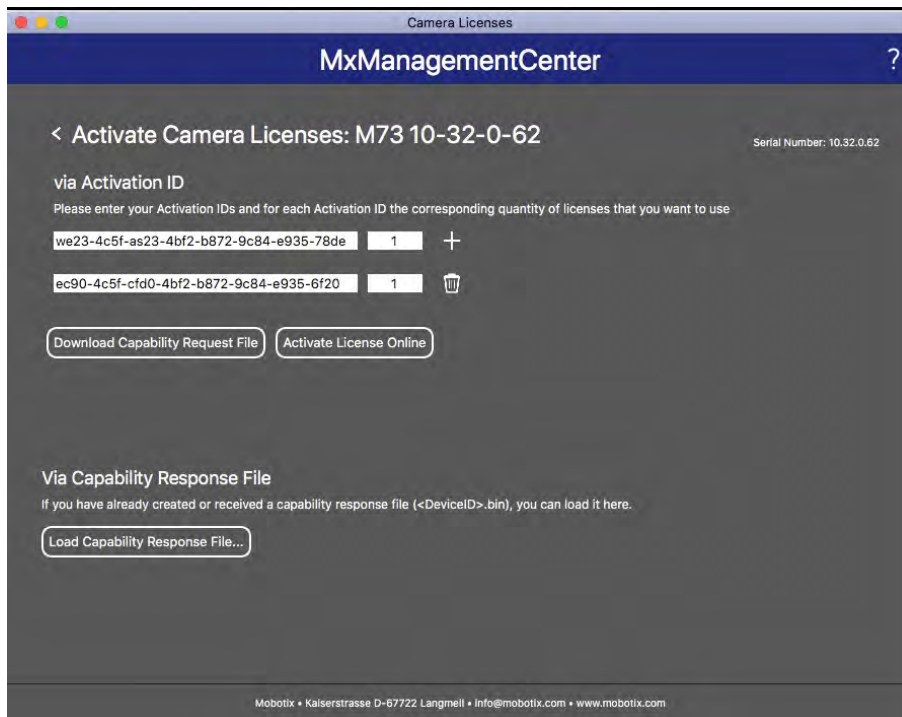


Fig. 3: Adding licenses

Successful activation

After successful activation, a new log in is required to apply the changes. Alternatively, you can return to license management.

Failed activation (missing internet connection)

If the license server cannot be reached, e.g. due to a missing internet connection, apps can also be activated offline. (see [Offline Activation](#), p. 13).

Offline Activation

For offline activation, the partner/installer from whom you purchased the licenses can generate a capability response (.bin file) on the license server to activate their licenses.

- Select from the menu **Window > Camera App Licenses**.
- Select the camera on which you want to license apps and click **Select**.

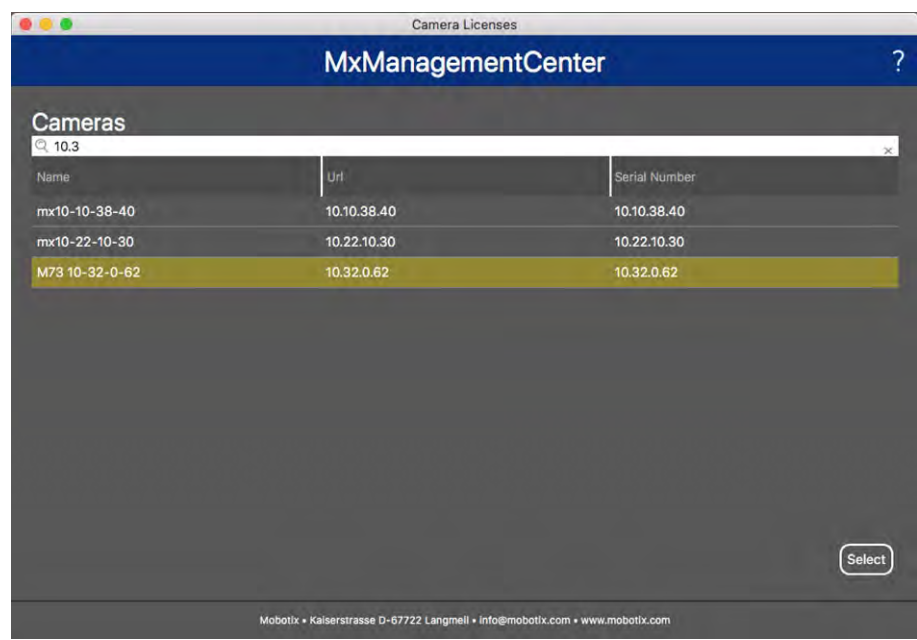


Fig. 4: Overview of Camera App Licenses in MxManagementCenter

Note

If necessary, correct the time set on the camera.

3. An overview of the licenses installed on the camera may be displayed. Click **Activate License**.

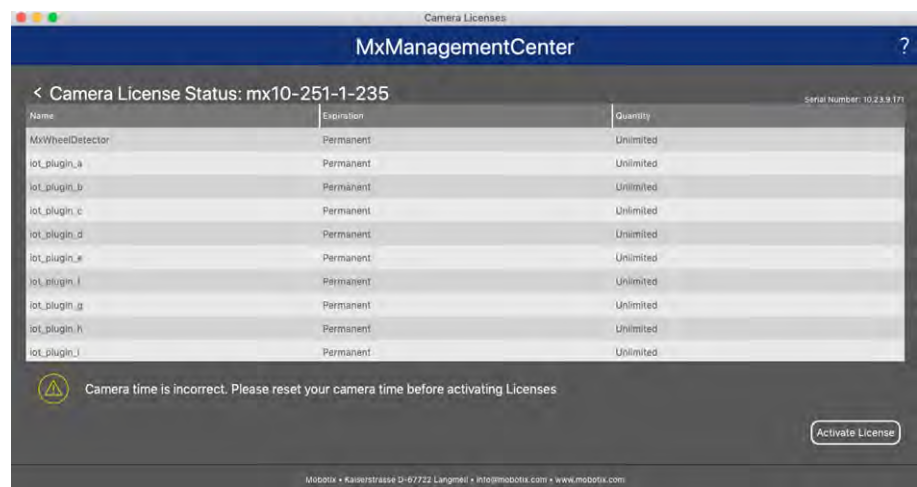


Fig. 5: Overview of the licenses installed on the camera

Note

If necessary, correct the time set on the camera.

4. Enter a valid Activation ID and specify the number of licenses to install on this computer.
5. If you want to license another product, click on . In the new row, enter the appropriate **Activation ID** and the number of licenses you want.
6. If necessary, click to remove a line.

- When you have entered all Activation IDs, click **Download Capability Request File (.lic)**, and send it to your partner/installer.

Note

This file allows the partner/installer from whom you purchased the licenses to generate a capability response file (.bin) on the license server.

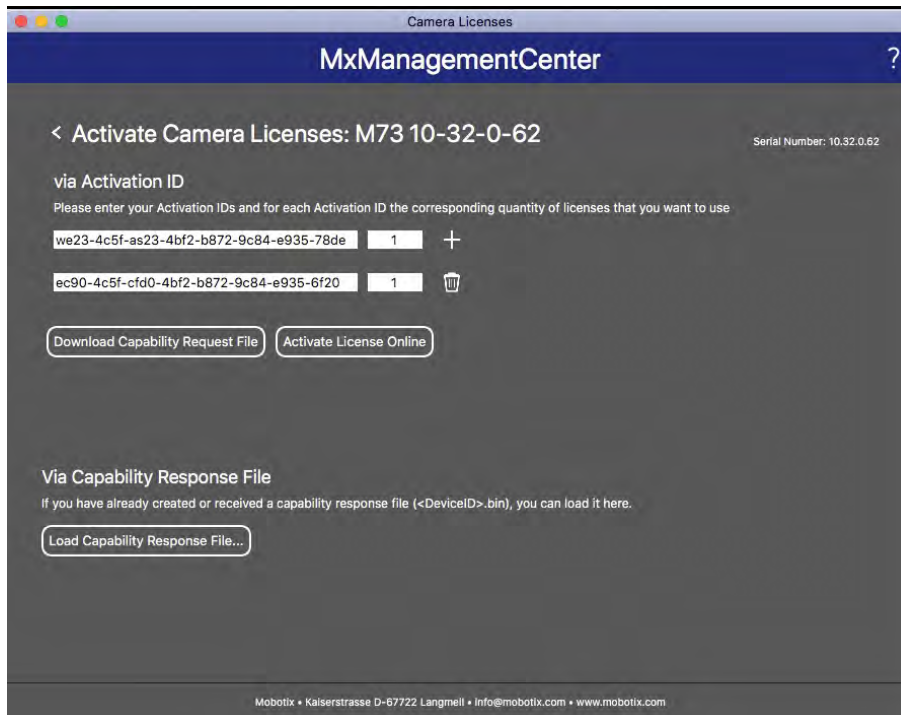


Fig. 6: Adding licenses

- Click Load Capability Response File and follow the instructions.

Successful activation

After successful activation, a new log in is required to apply the changes. Alternatively, you can return to license management.

Manage licenses

In the license management screen, you get a tabular overview of all licenses that have been activated for a camera.

- Select from the menu **Window > Camera App Licenses**.
- Select the camera on which you want to license apps and click **Select**.

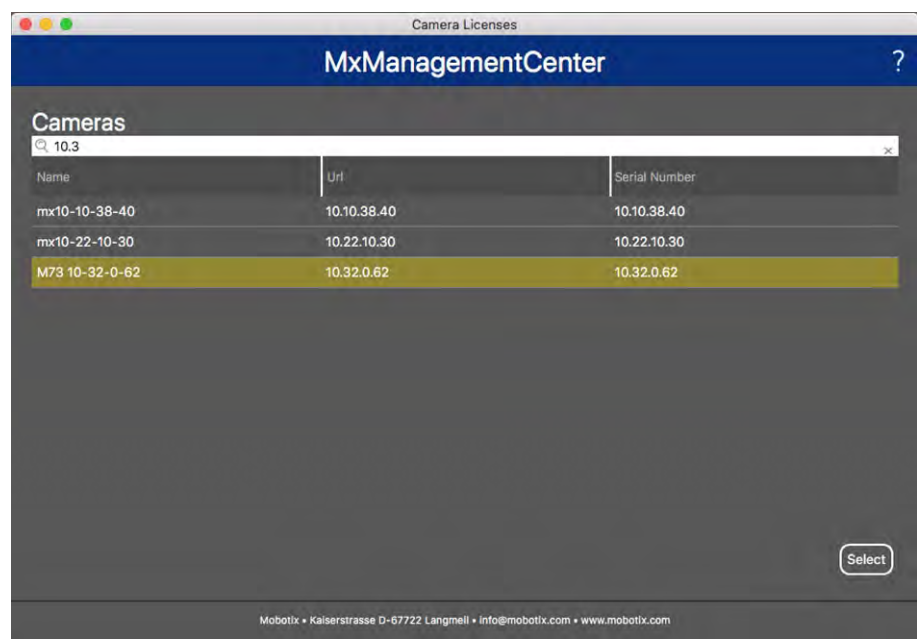


Fig. 7: Overview of Camera App Licenses in MxManagementCenter

An overview of the licenses installed on the camera may be displayed.

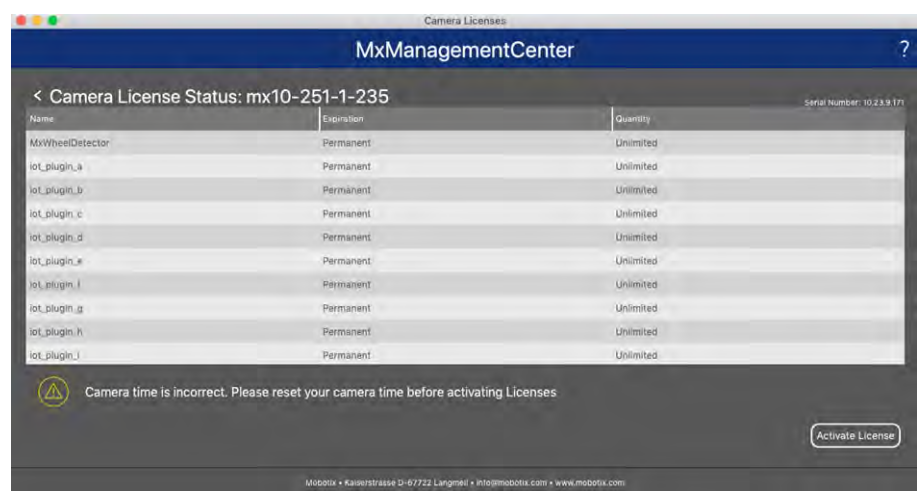


Fig. 8: Overview of the licenses installed on the camera

Note

If necessary, correct the time set on the camera.

Column	Explanation
Name	Name of the licensed app
Expiration	the time limit of the license
Quantity	Number of licenses purchased for a product.
Serial Number	Unique identification determined by MxMC for the device used. If problems occur during licensing, please have the device ID ready.

Synchronize licenses with server

When the program starts, there is no automatic comparison of the licenses between the computer and the license server. Therefore, click **Update** to reload the licenses from the server.

Update licenses

To update temporary licenses, click **Activate Licenses**. The dialog for updating/activating licenses opens.

Note

You need administrator rights to synchronize and update licenses.

Camera, image and scene requirements

The camera should be setup so that the combination of the distance, the lens's focal length and the camera's resolution provide an image that can be accurately analyzed by the OCR. Therefore the following pre-requisites must be fulfilled for the scene:

Quality of the license plate to be captured in the image

- The license plate must be high-contrast and clearly legible, i.e. as clean as possible, without dents or holes and well illuminated.
- The license plate should be rectangular
- Minimum character height
 - The objective of an ALPR system is to capture an image with a good readable plate. In order to achieve this the characters on the plate should have a height between 20 and 30 pixels for larger plate formats (e.g. EU 50cm plates) and about 25-35 pixels for USA-style plates which are physically smaller and have a narrow character stroke width in many states.)
 - Certain Middle East and Arabic plates are smaller still and will need an even greater character pixel height of say 30-40 pixels. For example, in Abu Dhabi the small characters next to or above the main characters are only 3cm high and may require a much higher camera resolution.

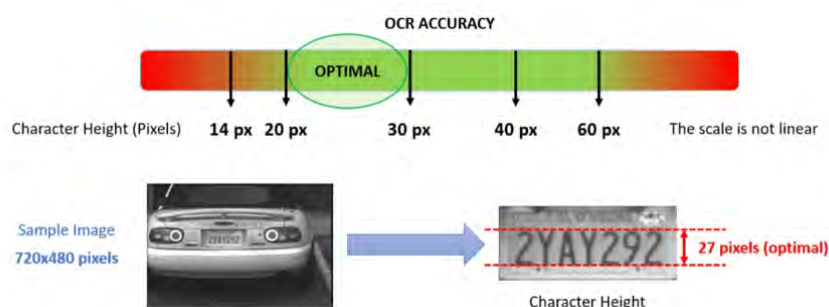


Fig. 9: Minimum character height

- Maximum rotation angle:

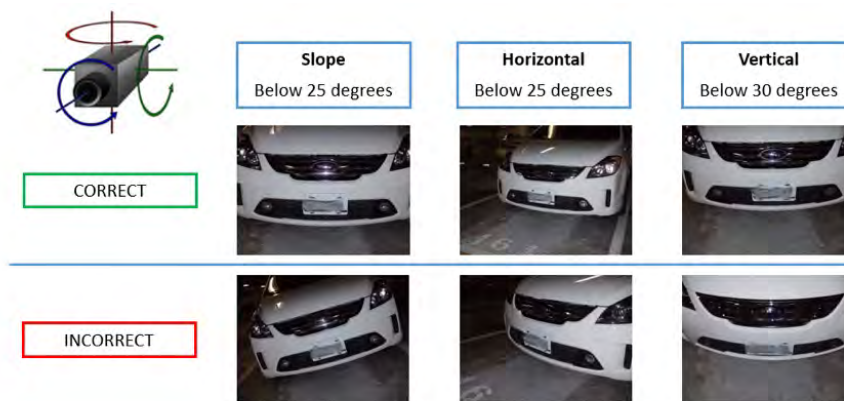


Fig. 10: Maximum rotation angle

- Vertical: $< 30^\circ$
- Slope: $< 25^\circ$
- Horizontal: $< 25^\circ$

Examples of clearly recognizable license plates



Easily readable license plate in daylight



Easily readable license plate at night with infrared LED illumination

Frame rate

The selection of the correct frame rate influences the recognition quality significantly. For ALPR cameras, the following frame rates are recommended:

Examples for recommended frame rates

Scene (Street type)	minimum frame rate (fps)
Barrier or Gate	5
Normal city street	15
Fast city streets	20
Freeway	25

Shutter Speed (Exposure time)

Shutter speed, also known as the “exposure time”, is the length of time a camera shutter is open for in order to expose light onto the camera sensor. The shutter speed is measured in seconds, or fractions of a second. The bigger the denominator, the faster the speed. For example, 1/250th means one two-hundred-and-fiftieth of a second or four milliseconds.

(1 second = 1000 milliseconds)

Examples for recommended exposure times

Scene (Street type)	minimum exposure time (sec)
Barrier or Gate	1/250 th (4 milliseconds)
Normal city street	1/500 th (2 milliseconds)
Fast city streets	1/1000 th (1 milliseconds)
Freeway	1/1000 th (1 milliseconds)

Note

The exposure time must be adjusted according to the light conditions.

Resolution

The resolution of the camera determines the amount of detail that can be captured. The smaller the object detail, the higher the resolution that is required. There are several factors that determine the detail captured:

- The resolution (pixel size) of the camera sensor. This sensor (normally CMOS) where the light eventually falls and a typical IP camera has a sensor resolution of 2 or 4 Megapixels.
- The resolution of the camera’s electronics. Most CCTV cameras can support a minimum of 1920 x 1080 – but may be set to a lower resolution if not needed.
- The quality and focal length of the lens. The quality of the optics can play a part in challenging circumstances. The focal length (zoom factor) determines the field of view that can be seen.
- The quality of the images can be influenced by factors such as the type of lighting used.

Examples for recommend resolutions

Scene (Street type)	minimum resolution
Barrier or Gate	800 x 600 px
Roadside Deployment	1280 x 720

Focal length

The focal length of the lens determines how “zoomed in” the image is. It is usually expressed in millimeters (e.g., 6 mm, 25 mm, or 50 mm).

The focal length defines the angle of view (how much of the scene will be captured) and the magnification (how large individual elements will be). The longer the focal length, the narrower the angle of view and the higher the magnification. The shorter the focal length, the wider the angle of view and the lower the magnification.

In the case of zoom lenses, both the minimum and maximum focal lengths are stated, for example 10–40 mm.

Examples for recommended focal length

Scene (Street type)	Distance between camera and license plate (m)	recommended lens
Barrier or Gate	2 - 6 m	2 - 8 mm or similar
Highway, road or street	15 - 30 m	15 - 50 mm or similar

Note

The lense should be **IR corrected** to avoid out of focus images. IR Corrected lenses should be used on both day/night and monochrome cameras in all lighting conditions in order to achieve a crisp sharp image.

Infrared illumination

Infrared (or IR) illuminators are designed to provide additional illumination that the camera can see but humans normally cannot. In low light conditions, an IR illuminator is used as a spotlight to facilitate 24-hour recognition. It can penetrate darkness and to a lesser extent fog, rain and snow and it eliminates the inconsistency of ambient light.

Infrared illuminators add light across the camera’s field of view to produce the desired image quality, lighting up the area and reflecting the plate.

For ALPR, it is recommended that the camera always has an infrared illuminator. This can be built into the camera or added as an external unit providing that it is placed very close to the camera lens.

Recommendations on mounting and adjusting.

- If you want to recognize license plates on multiple lanes it is generally recommended to mount the camera on a crossbar.

- Use an IR Led to recognize license plates at night or under low light conditions.
- Shutter speed must be high enough to cut the light from car's headlights at night (usually it's about 1/1000). Keep in mind, that too high shutter speed may obscure the edges of the lines (especially shadows).
- Depth of focus is a very important parameter. If you are using a camera with a CS-mount lens, use a fixed lens. Fixed lens are better for license plate recognition due to greater depth of focus. Megapixel lens is also strongly recommended.
- Respect changing light conditions (e. g. due to sunrises and sunset) when choosing the place of mounting. Direct sunlight beams can distort a picture. If the cars facing a direct sunlight consider using a lens with auto iris mode.
- If mounting a camera on a roadside pole check how the pole reacts to heavy cars or a convoy of cars. Some poles have tangible tremor, this could make license plate recognition almost impossible.
- It is recommended to turn down WDR and BLC. In most cases, they will make the picture more pretty, but at the cost of smudging details like an edges of letters in the license plate. For the same reason keep digital noise reduction as low as possible.
- On certain rare conditions there may be a cases of false detections e. g. because of recognizing image parts that structurally or semantically look similar to a license plate(e. g. fences or ads). To minimize this:
 - Adjust the region of interest accordingly. It may be a good idea to make it smaller, or change it's shape, omitting the parts, which potentially may be false detected.
 - Adjust the min and max license plate settings according to upper instructions do not leave a default 130 - 300.
 - There may be cases, when the best performance will occur by changing angle of lens or moving the camera. In some cases, shooting a front license plate is better.

Troubleshooting

Blurred license plates can not be recognized

Problem: If you need to recognize multiple license plates of cars following one another a wider depth of field might be necessary. In the example below only the license plate in the green frame can be recognized.

Solution: adjust the lens focus to archive a higher depth of field.



Fig. 11: Insufficient depth of field

Problem: License plate is blurred due to wrong focus settings or to long exposure time.

Solution: Adjust focus settings or increase shutter speed



Fig. 12: Blurred license plate due to long exposure time

License plates cannot be recognized due to over exposure

Problem: In certain situations license plates can be over exposed and therefore no more readable. Possible cause could be direct sunlight shining on the license plates or to strong IR LED light at night.

Solution: Adjust shutter speed or dim IR LED light.



Fig. 13: Over exposed license plate at daytime



Fig. 14: Over exposed license plates due to too strong IR LED light

License plates cannot be recognized due to insufficient light

Problem: In certain situations there is not enough light which results in low contrast. Therefore license plates are not readable. Possible cause could be direct sunlight shining on the license plates or too strong IR LED light at night.

Solution: Adjust the shutter speed or provide extra light.



Fig. 15: Insufficient light to recognize license plate

License plates cannot be recognized due to low resolution

Problem: It seems that the license plate is well recognizable despite good illumination and sufficient resolution.

Solution: Measure the resolution of the license plate to be captured with an image processing program. It may be necessary to adjust the horizontal resolution to the minimum required 130 px (see [Camera, image and scene requirements](#), p. 18).



Fig. 16: Insufficient light to recognize license plate

Activation of the Certified App Interface

Attention

The VAXTOR License Plate Recognition App does not consider obscure areas defined for the live image. Therefore there is no pixelation in obscure areas while configuring the app and during image analysis by the app.

Note

The user must have access to the setup menu ([http\(s\)://<Camera IP address>/control](http(s)://<Camera IP address>/control)). Therefore check the user rights of the camera.

1. In the camera web interface, open: **Setup Menu / Certified App Settings** ([http\(s\)://<Camera IP address>/control/app_config](http(s)://<Camera IP address>/control/app_config)).

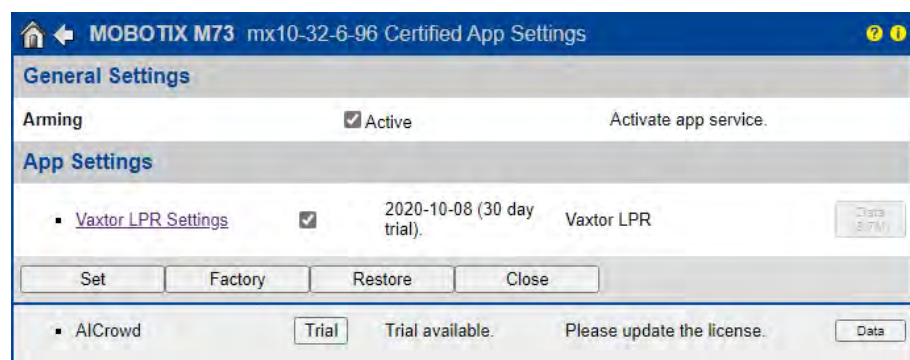


Fig. 17: Certified App: Settings

2. Under **General Settings** activate the **Arming** of the app service (see screenshot).
3. Under **App Settings** check the **Activation** option and click **Set**.
4. Click on the name of the App to be configured to open the Apps user interface.
5. For configuration of the App see [Configuration of VAXTOR License Plate Recognition App, p. 27](#).

Configuration of VAXTOR License Plate Recognition App

Note

For best performance and results in LPR processing make sure to have scene set up to meet the [Camera, image and scene requirements](#), p. 18.

Attention

The user must have access to the setup menu ([http\(s\)://<Camera IP address>/control](http(s)://<Camera IP address>/control)). Therefore check the user rights of the camera.

1. In the camera web interface, open: **Setup Menu / Certified App Settings** ([http\(s\)://<Camera IP address>/control/app_config](http(s)://<Camera IP address>/control/app_config)).
2. Click on the name of the **VAXTOR License Plate Recognition App**.

The configuration window of the app appears with the following options:

Starting the app service

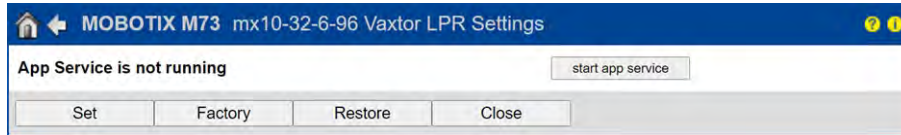


Fig. 18: Starting the app service

1. To start the VAXTOR License Plate Recognition App click **start app service**.

VAXTOR LPR - Basic Settings

Multiple countries can be selected from more to less probability of occurrence. Therefore the following configurations should be taken into account:

The screenshot shows the 'Vaxtor LPR' settings window. It has a title bar with a home icon, 'MOBOTIX M73', 'mx10-32-6-96 Vaxtor LPR Settings', and a help icon. The settings are organized into sections: 'Countries' with a list of Germany, Denmark, and Afghanistan, each with a dropdown arrow and a remove 'x' button, and a '+' button to add more; 'States' with a dropdown for Alabama and a '+' button; 'Grammar Strict' with a checked checkbox; 'Multi-country Balance' with an unchecked checkbox; 'Working Mode' with a dropdown set to 'freeflow'; 'Enable MxMessage' with a checked checkbox; and 'Enable Overlay' with a checked checkbox. To the right of each setting is a descriptive text explaining its function.

Setting	Value	Description
Countries	Germany, Denmark, Afghanistan	Choose countries from more to less probability of occurrence
States	Alabama	Choose states from more to less probability of occurrence. This will be used only if United States is selected
Grammar Strict	<input checked="" type="checkbox"/>	Read only plates that match a country grammar
Multi-country Balance	<input type="checkbox"/>	If the flag is OFF the OCR will select the first country matching the plate grammar, otherwise it will compare candidates with all the countries in the list selecting the best option according to its internal algorithms
Working Mode	freeflow	Signaled: The application will only attempt to read a license plate number when the signal is activated. Freeflow: The application continuously captures license plate numbers.
Enable MxMessage	<input checked="" type="checkbox"/>	Send a mxmessage when a plate is read
Enable Overlay	<input checked="" type="checkbox"/>	Display an overlay on all the sensors when a plate is read

Fig. 19: Recognition zones

Countries: Select at least one country and ensure that you select in the more to less probability of occurrence.

To add country select it and click the + button.

To remove a country click on the x button beside it.

States: *This will be used only if United States is selected!* Select at least one country and ensure that you select in the more to less probability of occurrence.

Note

that the same neural engine (used for matching character shapes) is used for all of the Americas, selecting the state simple loads the possible syntax (grammar) for those states to help with the letter O and zero for example. Other states not in the list will still be recognized.

Grammar strict: Check to force the Engine to only use the syntax from countries or states that you have selected. Plates that do not match these rules will not be reported. This is the recommended option for using ALPR for access control where exact matches are required

Note

In USA, plates are often seen from multiple States – and so the recommended setting is OFF.

Multi country balance: This option only applies when more than one country is defined in the selected countries list. If the flag is OFF (default) the OCR will select the first country matching the plate grammar, otherwise it will compare candidates with all the countries in the list selecting the best option according to its internal algorithms.

Note

Keep this set to OFF unless there is a high probability of having plates from different countries in equal numbers. e.g. on the border between two countries.

Working mode: The following modes are available:

Free flow: The application continuously captures license plate numbers.

Signaled: The application will only attempt to read a license plate number when the signal is activated.

MxMessage: Check to enable the processing of LPR events in the MxMessageSystem.

Enable Overlay: Check to enable the display of the license plate recognition result in the live view.

Recognition Areas

A Recognition Area, an area within the video frame where the OCR analytics takes place. You can draw a polygon and choose whether the area to look for plates in Inside or Outside this region. You can set multiple areas to respect complex situations.

Note

Using Recognition Area can decrease OCR processing time and also reduce false positives. Each Recognition Area must be given a unique numeric Identifier from the dropdown list. Note that the whole license plate must be in or out the Recognition Area to pass the test.

Fig. 20: Recognition Areas

Recognition Area Type: Check to activate the sending of events according to the following configuration

Inclusion: only the plates inside the recognition area will be detected.

Exclusion: only the plates outside the recognition area will be detected.

Show Recognition Area: Check to display the recognition area on the LPR sensor.

Drawing a Recognition Area

1. In the live view hold the **Shift** key and click the upper left corner point of the recognition area.
2. Release the **Shift** key and click on the lower right corner point of the recognition area.
3. In the configuration interface click **Set Rectangle** to adopt the coordinates of the rectangle.
4. Optionally click the **plus** icon to add another recognition area.
5. Optionally click the **bin** icon to delete a recognition area.
6. Check Draw **Set Rectangle** to activate the recognition areas.

List Management

You can define a black list and a white list with up to 1000 license plates per list. If a license plate from one of the lists is recognized, a corresponding event is .sent within the MxMessageSystem of the camera.

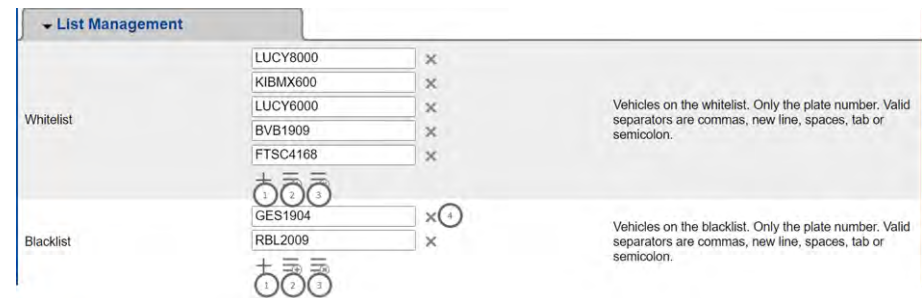


Fig. 21: Black and white lists

Adding a license plate to a list

1. Click **plus** (1) and enter the license plate text into the text field
2. Click **plus** again to enter another license plate

Adding multiple license plates to a list

1. Click **Add multiple license plates** (2). A window with a text field appears.



Fig. 22: Adding multiple license plates

2. Enter the text of the license plates to be added - one line per license plate.
 3. Click **Set** to add the license plates. The editor window closes and the license plates are added to the list.
- another license plate

Deleting a license plate from a list

1. Click **Delete license plate** (4)

Deleting all license plates from a list

1. Click **Delete all license plates** (3).

Video

In the video tab you can specify video quality of the video to be analyzed.

Video		
LPR Sensor	Right sensor ▾	Sensor used to recognize license plates
Overview Sensor	None ▾	Sensor used to capture overview images when a plate is detected
Resolution	1920x1080 ▾	Working resolution. Adjust the resolution and the camera zoom to capture the plates on the optimum range. Changing this option will require a camera reboot
Minimum Character Height	18	Minimum character height in pixels (14-70). Tip: optimal reading size is 25 pixels height
Maximum Character Height	42	Maximum character height in pixels (14-70). Tip: optimal reading size is 25 pixels height

Fig. 23: Video

LPR sensor: Select the camera sensor to be used for License plate recognition.

Note

Changing this option requires a camera reboot.

Overview Sensor: Optionally select a sensor used to capture overview images when a plate is detected.

Resolution: Set the working resolution (current max = 1080p). Adjust the resolution and the camera zoom to capture the plates on the optimum range.

Note

Changing this option requires a camera reboot.

Minimum Character Height: the minimum height that a license plate's characters should be before being read. The characters should be about 20-30 pixels high.

Note

For small license plates, e. g most Arabic plates or plates with additional small characters e.g. Costa Rica a minimum character height of 30 pixels is recommended.

The recommended difference between the min and max heights is about 10 pixels

Maximum Character Height: the maximum height is about 20-30 pixels.

Note

The recommended difference between the min and max heights is about 10 pixels.

License Plates

In the License Plates tab you can refine the settings for the license plates to be analyzed.

License Plates		
Minimum Plate Characters	<input type="text" value="5"/>	Minimum number of characters that the license plate may have (4-12)
Maximum Plate Characters	<input type="text" value="9"/>	Maximum number of characters that the license plate may have (4-12)
Multiline Reading	<input checked="" type="checkbox"/>	Read plates with 2 lines
License Plate Color Contrast	<input type="text" value="Dark font on light background"/>	Plate color contrast. 1:dark font on light background, 2:light font on dark font, 3: both. Tip: do not use both unless it is really necessary

Fig. 24: License Plates

Minimum Plate Characters: Minimum number of characters that the license plate may have (4-12).

Maximum Plate Characters: Maximum number of characters that the license plate may have (4-12).

Multiline Reading: set if license plates with 2 lines should be read.

Maximum Character Height: the maximum height is about 20-30 pixels.

License Plate Color Contrast: The following options are available:

dark font on light background

light font on dark font

both

Note

Do not use both unless it is really necessary.

Environment

In the Environment tab you can set parameters in respect the environmental situation the license plates are to be analyzed.

Environment		
Same Plate Delay	<input type="text" value="60"/>	Minimum elapsed time to report the same plate twice (seconds)
Same Plate Character Distance	<input type="text" value="2"/>	Maximum difference between two plates to be considered as the same (Levenshtein distance)
Maximum Slope Angle	<input type="text" value="20"/>	License plate maximum slope angle (0-30)
Maximum Recognition Period	<input type="text" value="500"/>	Maximum time the OCR can spend reading one or more times the same plate (multiple samples) until making its final decision (ms)
Minimum Plates Occurrences	<input type="text" value="1"/>	Minimum number of times the plate should be read within the "Max Recognition Period"
Maximum Plates Occurrences	<input type="text" value="5"/>	Maximum number of times the plate should be read within the "Max Recognition Period". If the OCR reaches this number before the maximum recognition period expires, it will force out the plate result
Reported Image	<input type="text" value="First"/>	Define which image from the pool is returned with the metadata

Fig. 25: Environment

Same Plate Delay: Minimum elapsed time in seconds to report the same plate twice. This is to prevent multiple reporting of the same plate in situations when the traffic is slow or stationary.

Example

If a vehicle stops at a barrier and the plate is reported but the car doesn't move for 30 seconds, then this delay should be set to say 60 seconds or more to prevent a duplicate read.

Note

When using triggered mode, it is recommended that you set the delay to 0 seconds.

Same Plate Character Distance: Set the number of characters that two readings of the same license plate must differ by to be considered different. The camera is capable of reading a plate several times as it passes through the field of view. If one character is misread on one of the reads, then by setting this value to 2 then both reads will contribute towards the reported plate text.

Maximum Slope Angle: Set the angle of slope of a plate that the engine should attempt to read up to (0-30°).

Maximum Recognition Period: Maximum time the OCR can spend reading one or more times the same plate (multiple samples) until making its final decision (ms)

Minimum Plates Occurrences: Minimum number of times the plate should be read within the "Max Recognition Period" before being reported.

Maximum Plates Occurrences: Set the maximum number of times that a plate should be read before being reported (this may happen before the timeout).

Reported Image: Define which image from the pool is returned with the meta data. A plate is normally read several times as it passes through the camera's field of view. You may want to use the largest (Last) image for oncoming traffic & the First image for vehicles moving away from the camera.

OCR

In the OCR (Optical Character Recognition) tab you can set parameters to ensure the best possible recognition results.

▼ OCR	
Minimum Global Confidence	<input type="text" value="80"/> <div>Minimum global confidence 1-100, plates under this confidence will be discarded</div>
Minimum Character Confidence	<input type="text" value="70"/> <div>Minimum character confidence 1-100, characters under this confidence will be discarded</div>
Analytics Complexity	<div>Medium ▼</div> <div>Tip: Set low if you're losing plates because lack of performance, Medium: default/normal scenario conditions, High: low quality video</div>
Find Plate Complexity	<div>Low ▼</div> <div>Tip: Set Low for normal scenarios with one or two lanes, Medium: if you notice missing plates on a normal scenario, High: low quality video with stopped vehicles only (heavy processing)</div>

Fig. 26: OCR

Minimum Global Confidence: Set the minimum confidence level that the whole license plate read must meet in order to be accepted. The global confidence is the average of all individual characters' confidences. The recommended value is 70. Set lower if you see some plates in very bad condition but want to read them.

Note

Setting the Minimum Global Confidence too low will cause the OCR engine attempt to read other items such as vehicle signage etc.

Minimum character Confidence: Set the minimum confidence level that a single character must meet in order to be accepted. The recommended value is 50.

Note

In regions with open grammars such as the USA keep these two values high, e.g. 90-80 respectively. Higher values mean a lower probability of false positives but a lower probability of missing plates.

Analytics Complexity: This is the complexity of the analytics to be applied during the ALPR Engine's stage of plate reading. Set this according to the OCR mode and type of traffic expected. There are three options.

Low: Recommended for very high-speed traffic where the OCR needs to work faster and your preference is for plate detection over perfect recognition.

Medium (Default) Recommended when the OCR mode is set to free-flow.

High: Recommended when the OCR mode is set to signal (triggered).

Attention:

Higher complexities give more accurate reading but make the ALPR engine run slower.

Find Plate Complexity: This is the complexity of the analytics to be applied during the ALPR Engine's stage of plate finding. Set this to one of the following three values:

Low: apply up to 3 levels

Medium: apply up to 8 levels

High: apply up to 12 levels

Attention:

Higher complexities give more accurate reading but make the ALPR engine run slower.

Reporting

VAXTOR License Plate Recognition App is able to output all plate reads in real time using a variety of standard protocols so that the plate reads can be accepted remotely by a variety of programs including Vaxtor's powerful Back Office - Helix, which can accept and store plate reads in real time from hundreds cameras. By selecting one of the listed protocols, a sub-menu will appear with fields for setting up parameters such as remote IP addresses etc.

Reporting		
Retry Notifications	<input checked="" type="checkbox"/>	Retry failed notifications (Helix-6 and JSON only)
Send Test	<input type="checkbox"/>	Send a fake read (TEST) when settings are stored or when the camera is started
Text Overlay		
Overlay Template	<input type="text" value="\$date\$ - \$plateutf8\$"/>	Template to use on the overlay, check the manual for available keywords
MxMessage		
MxMessage Template	<input \$roid\$\",="" "direction""="" type="text" value='{"area": \'/>	Defines the template of customized part of the MxMessage. Check the manual for available keywords
Subpath	<input type="text"/>	
Vaxtor Helix-6		
Enable	<input type="checkbox"/>	Send all results to the configured Helix-6 server
JSON		
Enable	<input type="checkbox"/>	Enable JSON HTTP/HTTPS POST reporting

Fig. 27: Reporting

Retry notifications: Check to retry failed notifications (Helix-6 and JSON only).

Send test: Check to send a fake read (TEST) when settings are stored or when the camera is started.

Text Overlay

Overlay Template: Define template to use on the overlay. Check the [Template Fields](#) for available keywords.

MxMessage

MxMessage Template: Define template of customized part of the MxMessage . Check the [Template Fields](#) for available keywords.

Subpath: Define a subpath for the MxMessage. Check the [Template Fields](#) for available keywords.

Vaxtor Helix-6 : Helix-6 protocol is an encrypted version of the Vaxtor protocol.

Enable : Check to send all results to the configured Helix-6 server.

JSON : Helix-6 protocol is an encrypted version of the Vaxtor protocol.

Enable : Check to enable JSON HTTP/HTTPS POST reporting.

Template fields

Template field	Explanation
\$date\$:	Timestamp in ISO8601 format
\$bottom\$	Bottom coordinate for the license plate on the image (pixels)
\$category\$	License plate category for countries that support it
\$charheight\$	Average charheight (pixels)
\$confidence\$	Global confidence (0-100)
\$country\$:	3 letter country code
\$direction\$	Enumerate with the vehicle direction (0: Unknown, 1: Towards, 2: Away, 3: Stopped)
\$height\$:	OCR image height

Template field	Explanation
\$ifblacklist\$	If the license plate is on the blacklist, the text in the 'if clause' will be displayed
\$ifnolist\$	If the license plate is not on a list, the text in the 'if clause' will be displayed
\$ifwhitelist\$	If the license plate is on the whitelist, the text in the 'if clause' will be displayed
\$left\$	Left coordinate for the license plate on the image (pixels)
\$multiplate\$	Amount of times that the license plate has been read before reporting
\$overviewimage\$	Overview JPEG image encoded in base64
\$overviewjpegsize\$	JPEG size in bytes
\$plate\$:	License plate text / number
\$plateimage\$	Plate crop JPEG image encoded in base64
\$platejpegsize\$	JPEG size in bytes
\$plateutf8\$:	License plate text / number in UTF8 format
\$processingtime\$	Processing time in milliseconds
\$right\$	Right coordinate for the license plate on the image (pixels)
\$roid\$	Recognition Area ID where the license plate number is found
\$state\$	License plate state (for US license plates only)
\$top\$	Top coordinate for the license plate on the image (pixels)
\$width\$	OCR image width

Advanced

In this section you find useful tools for calibration and trouble shooting.

Installation Tools

Calibration grid

☒

Debug level

NO LOG

LPR Confidence

0,7

Recognition threshold

Turn on the calibration grid to detect the acceptable license plate size. Vertical lines indicate a distance of 130 pixels wide. Please keep the license plates in the range 130-300 pixels wide

Fig. 28: Installation Tools

Log level: Select a debug level to generate a log file, which can be helpful e.g. for trouble shooting.

Info: Default log level

Trace: Select e. g. for diagnostic messages received from third parties

Debug: Select for complete log files for debug purposes

Show log file on screen: Check to display the on-screen log file on the selected sensor

Sensor: Select the sensor on which the on-screen log file is displayed

Storing the Configuration

To store the configuration you have the following options:

- Click on the **Set** button to activate your settings and to save them until the next reboot of the camera.
- Click on the **Factory** button to load the factory defaults for this dialog (this button may not be present in all dialogs).
- Click on the **Restore** button to undo your most recent changes that have not been stored in the camera permanently.
- Click on the **Close** button to close the dialog. While closing the dialog, the system checks the entire configuration for changes. If changes are detected, you will be asked if you would like to store the entire configuration permanently.

After successfully saving the configuration, the event and meta data are automatically sent to the camera in case of an event.

About MxMessageSystem

What is MxMessageSystem?

MxMessageSystem is a communication system based on name oriented messages. This means that a message must have a unique name with a maximum length of 32 bytes.

Each participant can send and receive messages. MOBOTIX cameras can also forward messages within the local network. This way, MxMessages can be distributed over the entire local network (see Message Area: Global).

For example, a MOBOTIX 7 series camera can exchange an MxMessage generated by a camera app with an Mx6 camera that does not support certified MOBOTIX apps.

Facts about MxMessages

- 128-bit encryption ensures privacy and security of message content.
- MxMessages can be distributed from any camera of the Mx6 and 7 series.
- The message range can be defined individually for each MxMessage.
 - **Local:** Camera expects an MxMessage within its own camera system (e.g. through a Certified App).
 - **Global:** the camera expects an MxMessage that is distributed in the local network by another MxMessage device (e.g. another camera of the 7 series equipped with a certified MOBOTIX app).
- Actions that the recipients are to perform are configured individually for each participant of the MxMessageSystem.

Basic configuration: Processing the automatically generated app events

Checking automatically generated app events

Note:

After successfully activating the app (see [Activation of the Certified App Interface, p. 26](#)), a generic message event for this specific app is automatically generated in the camera.

- To check the event go to **Setup-Menu / Event Control / Event Overview**.
- The automatically generated message event profile is named after the application (e. g. VaxALPR).

The screenshot shows the 'MOBOTIX M73 mx10-32-6-96 Message Events' configuration page. It features a table with columns 'Attribute', 'Value', and 'Explanation'. The 'IP Receive' attribute is set to '8000'. Below this, the 'Events' section shows a profile named 'VaxALPR' with a value of '5'. The 'Event Sensor Type' is set to 'MxMessageSystem'. The 'Event on receiving a message from the MxMessageSystem' section includes fields for 'Message Name' (VaxALPR), 'Message Range' (Local), and 'Filter Message Content' (No Filter). The 'Event Dead Time' is set to 5 seconds. The 'Add new profile' button is visible at the bottom.

Attribute	Value	Explanation
IP Receive	8000	Port: TCP port to listen on.
Events	Value	Explanation
VaxALPR	5	Event Dead Time: Time to wait [0..3600 s] before the event can trigger anew.
Event Sensor Type	<input type="radio"/> IP Receive <input checked="" type="radio"/> MxMessageSystem	Event Sensor Type: Choose the message sensor.
Event on receiving a message from the MxMessageSystem.		
	VaxALPR	Message Name: Defines an MxMessageSystem name to wait for.
	Local	Message Range: There are two different ranges of message distribution: Global: across all cameras within the current LAN. Local: camera internal.
	No Filter	Filter Message Content: Optionally choose how to ignore messages containing Filter Value. Select No Filter to trigger on any message with defined Message Name.

Buttons: Set, Factory, Restore, Close

Fig. 29: Example: Generic message event from VAXTOR License Plate Recognition App

Action handling - Configuration of an action group

Attention

To use events, trigger action groups or record images the general arming of the camera must be enabled ([http\(s\)/<Camera IP address>/control/settings](http(s)/<Camera IP address>/control/settings))

An action group defines which action(s) is (are) triggered by the VAXTOR License Plate Recognition App event.

Basic configuration: Processing the automatically generated app events

Facts about MxMessages

1. In the camera web interface, open: **Setup Menu / Action Group Overview** ([http\(s\)://<Camera IP address>/control/actions](http(s)://<Camera IP address>/control/actions)).

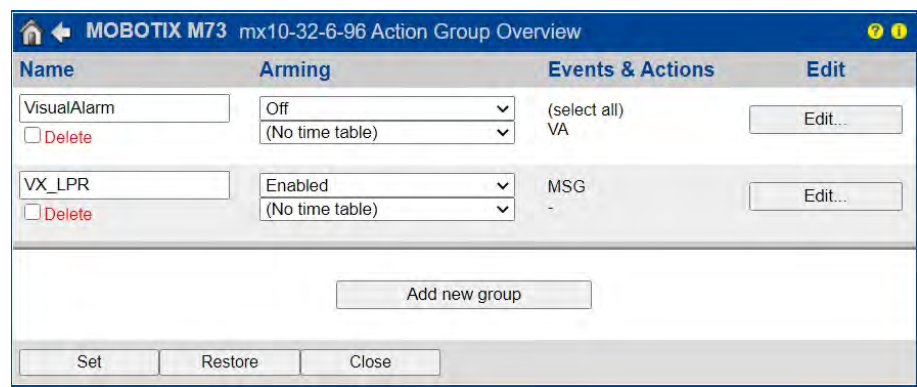


Fig. 30: Defining Action Groups

- Click **Add new group** and give a meaningful name.
- Click **Edit**, to configure the group.

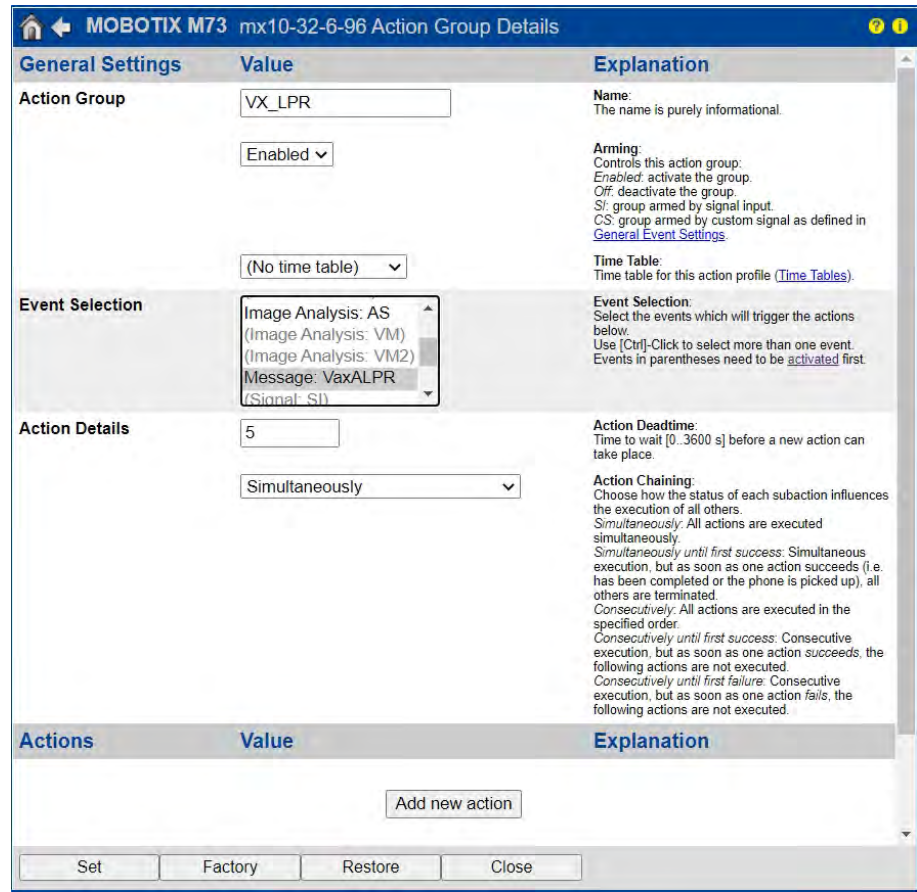


Fig. 31: Configuring an Action Group

1. Enable **Arming** of the Action Group.
2. Select your message event in the **Event selection** list. To select multiple events, press the shift key.

- Click **Add new Action**.
- Select a proper action from list **Action Type and Profile**.

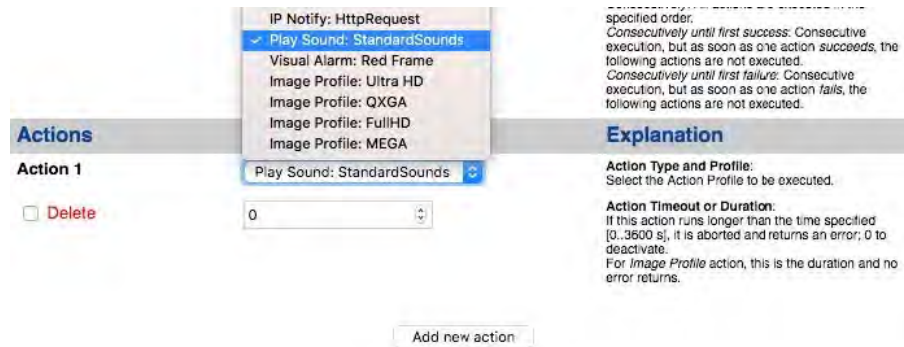


Fig. 32: Select Action Type- and Profile

Note

If the required action profile is not yet available, you can create a new profile in the Admin Menu sections "MxMessageSystem", "Transfer Profiles" and "Audio and VoIP Telephony".

Note

If necessary, you can add further actions by clicking the button again. In this case, please make sure that the "action chaining" is configured correctly (e.g. at the same time).

- Click on the **Set** button at the end of the dialog box to confirm the settings.

Action settings - Configuration of the camera recordings

- In the camera web interface, open: **Setup Menu / Event Control / Recording**([http\(s\)/<Camera IP address>/control/recording](http(s)/<Camera IP address>/control/recording)).

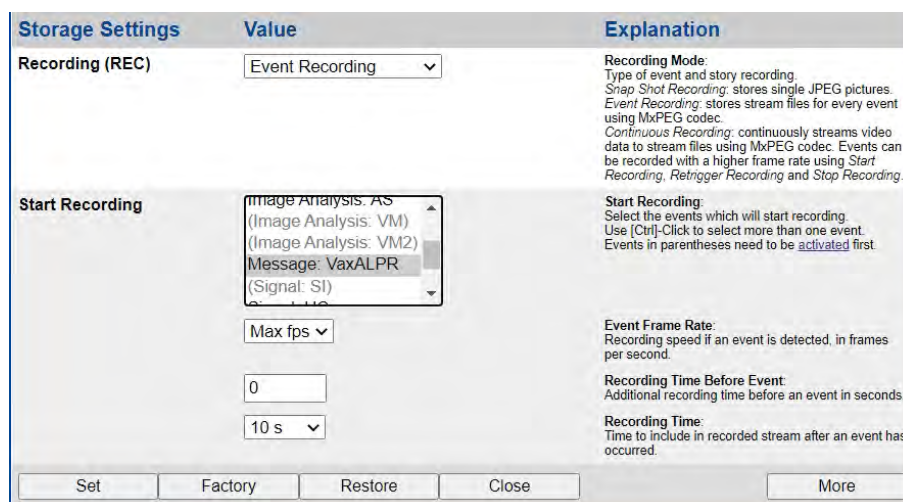


Fig. 33: Configuration of camera recording settings

Basic configuration: Processing the automatically generated app events

Facts about MxMessages

2. Activate **Arm Recording**.
3. Under **Storage Settings / Recording (REC)** select a **Recording mode**. The following modes are available:
 - Snap Shot Recording
 - Event Recording
 - Continuous Recording
4. In list **Start recording** select the message event just created.
5. Click on the **Set** button at the end of the dialog box to confirm the settings.
6. Click on **Close** to save your settings permanently.

Note

Alternatively, you can save your settings in the Admin menu under Configuration / Save current configuration to permanent memory.