



Guideline

MOBOTIX Vaxtor Container Code Recognition App

© 2021 MOBOTIX AG



Table of Contents

Table of Contents	2
Before You Start	3
Support	4
Legal Notes	4
About Vaxtor Container Code Recognition App	6
Smart Data Interface to MxManagementCenter	6
Technical Specifications	8
Licensing Certified Apps	10
Activating of Certified Apps in MxManagementCenter	10
Managing Licenses in MxManagementCenter	14
Camera, image and scene requirements	17
Recommendations on mounting and adjusting.	19
Activation of the Certified App Interface	20
Configuration of Vaxtor Container Code Recognition App	21
About MxMessageSystem	29
What is MxMessageSystem?	29
Facts about MxMessages	29
Basic configuration: Processing the automatically generated app events	30
Advanced Configuration: Processing the meta data transmitted by apps	35
Meta data transferred within the MxMessageSystem	35
Creating a Custom Message Event	36
Examples for message names and filter values of the Vaxtor Container Code Recognition App	38

Before You Start

This chapter contains the following information:

Support	4
Legal Notes	4

Support

If you need technical support, please contact your MOBOTIX dealer. If your dealer cannot help you, he will contact the support channel to get an answer for you as quickly as possible.

If you have internet access, you can open the MOBOTIX help desk to find additional information and software updates. Please visit:

www.mobotix.com > [Support](#) > [Help Desk](#)



Legal Notes

Special Export Regulations!

Cameras with thermal image sensors ("thermal cameras") are subject to the special export regulations of the U.S.A. and including the ITAR (International Traffic in Arms Regulation):

- According to the currently applicable export regulations of the U.S.A. and the ITAR, cameras with thermal image sensors or parts thereof must not be exported to countries embargoed by the U.S.A., except if a special permit can be presented. At present, this applies to the following countries: Crimea region of Ukraine, Cuba, Iran, North Korea, Sudan, and Syria. The same export ban applies to all persons and institutions listed in "The Denied Persons List" (see www.bis.doc.gov, "Policy Guidance > Lists of Parties of Concern"; <https://www.treasury.gov/resource-center/sanctions/sdn-list/pages/default.aspx>).
- Under no circumstances must the camera itself or its thermal image sensors be used in the design, the development or in the production of nuclear, biological or chemical weapons or in the weapons themselves.

Legal Aspects of Video and Sound Recording

You must comply with all data protection regulations for video and sound monitoring when using MOBOTIX AG products. Depending on national laws and the installation location of the VAXTOR License Plate Recognition - Dangerous Goods App, the recording of video and sound data may be subject to special

documentation or it may be prohibited. All users of MOBOTIX products are therefore required to familiarize themselves with all applicable regulations and to comply with these laws. MOBOTIX AG is not liable for any illegal use of its products.

Declaration of Conformity

The products of MOBOTIX AG are certified according to the applicable regulations of the EC and other countries. You can find the declarations of conformity for the products of MOBOTIX AG on www.mobotix.com under Support > Download Center > Certificates & Declarations of Conformity.

RoHS Declaration

The products of MOBOTIX AG are in full compliance with European Unions Restrictions of the Use of Certain Hazardous Substances in Electrical and Electronic Equipment (RoHS Directive 2011/65/EC) as far as they are subject to these regulations (for the RoHS Declaration of MOBOTIX, please see www.mobotix.com, Support > Download Center > Documentation > Brochures & Guides > Certificates).

Disposal

Electrical and electronic products contain many valuable materials. For this reason, we recommend that you dispose of MOBOTIX products at the end of their service life in accordance with all legal requirements and regulations (or deposit these products at a municipal collection center). MOBOTIX products must not be disposed of in household waste! If the product contains a battery, please dispose of the battery separately (the corresponding product manuals contain specific directions if the product contains a battery).

Disclaimer

MOBOTIX AG does not assume any responsibility for damages, which are the result of improper use or failure to comply to the manuals or the applicable rules and regulations. Our General Terms and Conditions apply. You can download the current version of the **General Terms and Conditions** from our website at www.mobotix.com by clicking on the corresponding link at the bottom of every page.

FCC Disclaimer

This equipment has been tested and found to comply with the limits for a Class A digital device, pursuant to part 15 of the FCC Rules. These limits are designed to provide reasonable protection against harmful interference when the equipment is operated in a commercial environment. This equipment generates, uses, and can radiate radio frequency energy and, if not installed and used in accordance with the instruction manual, may cause harmful interference to radio communications. Operation of this equipment in a residential area is likely to cause harmful interference in which case the user will be required to correct the interference at his own expense.

About Vaxtor Container Code Recognition App

Recognition of cargo container codes according to ISO 6346

Based on deep learning processes the certified Vaxtor Container Code Recognition App recognizes container codes and delivers realtime results about the container owner, type dimensions and much more. The app is able to detect container codes within 900 ms and an extremely high hit probability of over 99 percent. Via blocking or permission lists, authorized, or containers with unauthorized content can be defined specifically. Possible areas of use for the application are harbor & airport logistics, container inventory & surveillance, border control, access control or logistic management.

- Recognition of cargo container codes according to ISO 6346 standard
- with over 99% accuracy optimally suited for detection and logging of container codes on entry, between zones, during processes or exit
- Two lists for individual actions (e.g. access granted/denied, alarm, etc.)
- Integrated Smart Data Interface for data retrieval with MxManagementCenter version 2.4.3 or higher.

CAUTION! Thermal sensors are not supported by this app.

Smart Data Interface to MxManagementCenter

This app has a Smart Data interface to MxManagementCenter.

With the MOBOTIX Smart Data System, transaction data can be linked to the video recordings made at the time of the transactions. Smart Data source can be e.g. MOBOTIX P7 Apps (no license required) or general Smart Data sources (license required) like POS systems or license plate recognition systems.

The Smart Data System in MxManagementCenter enables you to quickly find and review any suspicious activities. The Smart Data Bar and the Smart Data View are available for searching and analyzing transactions. The Smart Data Bar provides a direct overview of the most recent transactions (from the last 24 hours) and for this reason it is convenient to use it for reviews and searches.

NOTE! For information on how to use the Smart Data System, see the corresponding online help of the camera software and MxManagementCenter.

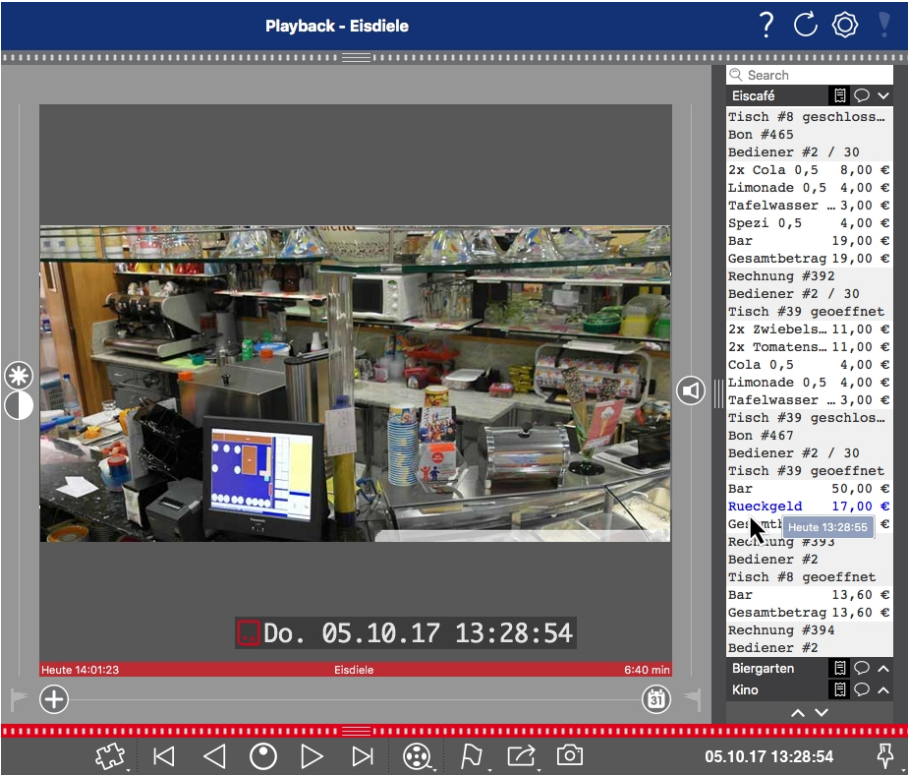


Fig. 1: : Smart Data Bar in MxManagementCenter (Example: POS System)

Technical Specifications

Product Information

Product Name	Vaxtor Container Code Recognition App
Order Code	Mx-APP-VX-CON
Supported MOBOTIX Cameras	Mx-M73A, Mx-S74A
Minimum Camera Firmware	v7.1.3.x
MxManagementCenter Integration	<ul style="list-style-type: none">■ min. MxMC v2.4.3■ Configuration: Advanced Config license required■ Event Search: Smart Data Interface license included

Product Features

App Features	<ul style="list-style-type: none">■ Recognition of cargo container codes according to ISO 6346■ Real time results:<ul style="list-style-type: none">■ Container Code■ Owner and corresponding origin■ Container Type■ Container Dimensions■ Control Digit■ Control Digit Validation■ Recognition log (Smart Data / Event Search via MxManagementCenter)■ MOBOTIX events via MxMessageSystem■ Two lists for individual actions (e.g. access granted/denied, alarm, etc.)■ Free flow and Signaled mode
Maximum number of recognition areas	1
Maximum number of enrolled license plates	1000 per list
Meta Data / Statistic formats	JSON

Trial License	30-day trial license pre-installed
MxMessageSystem supported	Yes
Integration Interfaces	<ul style="list-style-type: none"> ■ MxMC Smart Data ■ IP Notification ■ Milestone X-Protect ■ Vaxtor Helix ■ generic 3rd party integration via XML ■ compare supported camera's interfaces
MOBOTIX Events	Yes
ONVIF Events	Yes (Generic Message event)

Supported Container Codes

Supported Container Codes	Container code specification according to ISO 6346
---------------------------	--

Scene Requirements

Character Height	20px - 50px
Maximum Vertical Angle	30°
Maximum Horizontal Angle	< 25°
Maximum Tilt Angle	< 25°

Technical App Specifications

Synchronous / Asynchronous App	asynchronous
Simultaneous execution of other apps	No
Accuracy	min. 99% (considering scene requirements)
Processed frame rate	typ. 10 fps
Detection time	typ. 900 ms per Container

Licensing Certified Apps

The following licenses are available for the Vaxtor Container Code Recognition App:

- **30-day test license** pre-installed
- **permanent commercial license**

The usage period begins with activation of the app (see

NOTE!

For buying or renewing a license, contact your MOBOTIX Partner.

NOTE!

Apps are usually pre-installed with the firmware. In rare cases, apps must be downloaded from the website and installed. In this case see www.mobotix.com > **Support** > **Download Center** > **Marketing & Documentation**, download and install the app.

Activating of Certified Apps in MxManagementCenter

After a test period commercial licenses must be activated for use with a valid license key.

Online-Activation

After receiving the activation IDs, activate them in MxMC as follows:

1. Select from the menu **Window > Camera App Licenses**.
2. Select the camera on which you want to license apps and click **Select**.

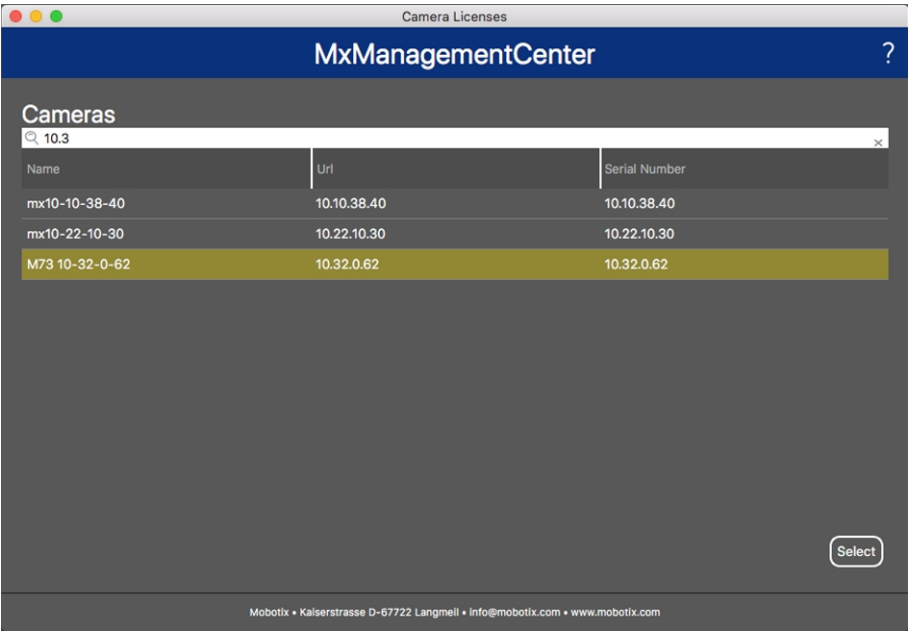


Fig. 2: Overview of Camera App Licenses in MxManagementCenter

NOTE!
If necessary, correct the time set on the camera.

1. An overview of the licenses installed on the camera may be displayed. Click **Activate License**.

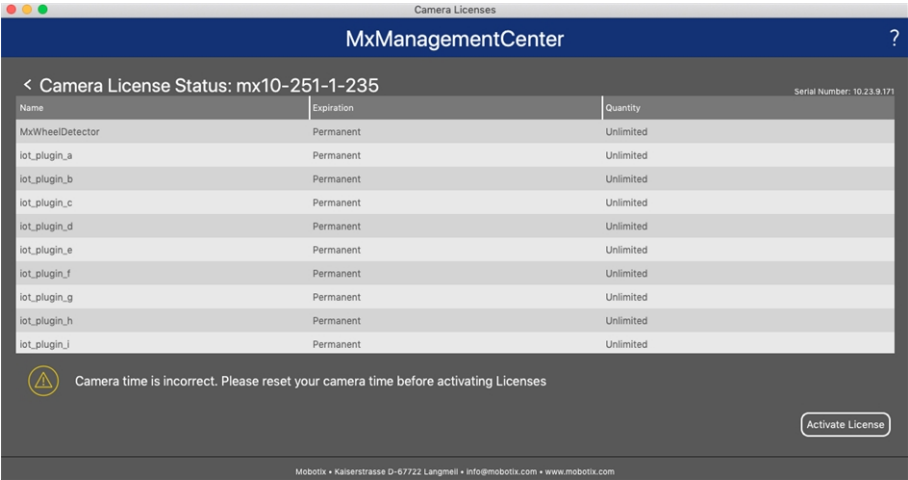


Fig. 3: Overview of the licenses installed on the camera

NOTE!
If necessary, correct the time set on the camera.

2. Enter a valid Activation ID and specify the number of licenses to install on this computer.
3. If you want to license another product, click on . In the new row, enter the appropriate Activation ID and the number of licenses you want.
4. To remove a line click .

- When you have entered all Activation IDs, click **Activate License Online**. During activation, **MxMC** connects to the license server. This requires an Internet connection.

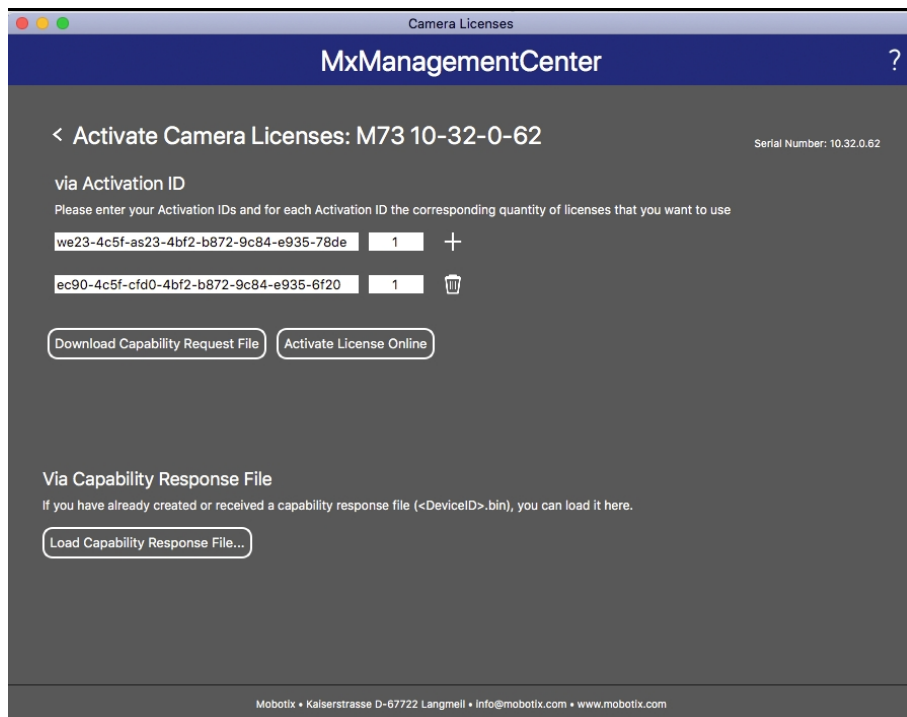


Fig. 4: Adding licenses

Successful activation

After successful activation, a new log in is required to apply the changes. Alternatively, you can return to license management.

Failed activation (missing internet connection)

If the license server cannot be reached, e.g. due to a missing internet connection, apps can also be activated offline. (see [FigureNumberOnly](#)).

Offline Activation

For offline activation, the partner/installer from whom you purchased the licenses can generate a capability response (.bin file) on the license server to activate their licenses.

- Select from the menu **Window > Camera App Licenses**.
- Select the camera on which you want to license apps and click **Select**.

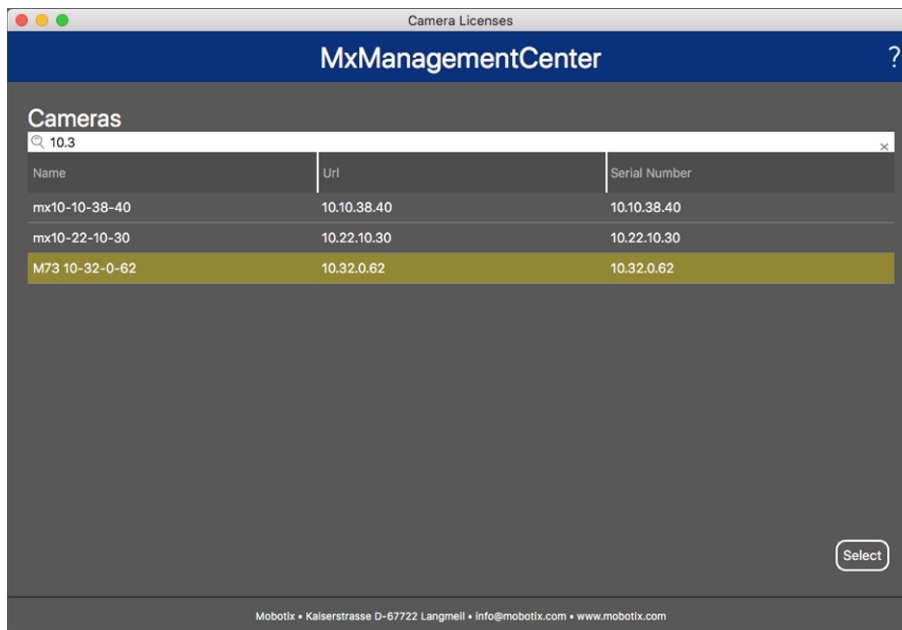


Fig. 5: Overview of Camera App Licenses in MxManagementCenter

NOTE!

If necessary, correct the time set on the camera.

3. An overview of the licenses installed on the camera may be displayed. Click **Activate License**.

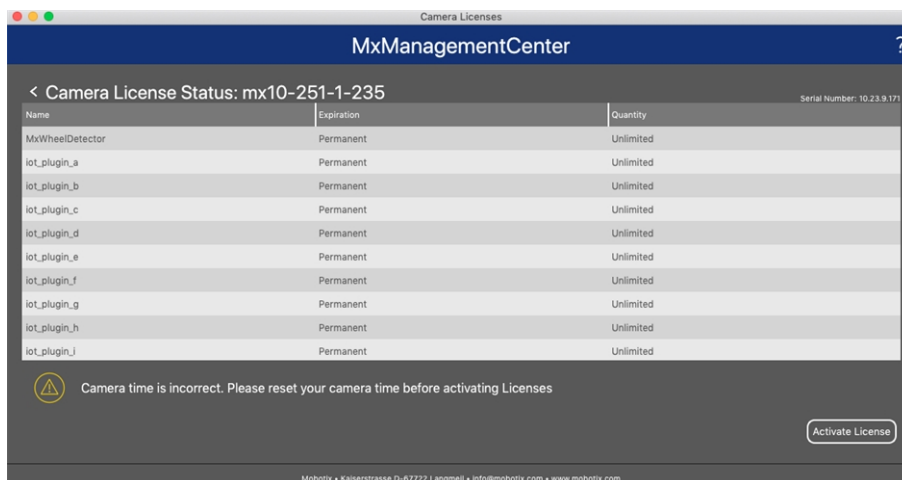


Fig. 6: Overview of the licenses installed on the camera

NOTE!

If necessary, correct the time set on the camera.

4. Enter a valid Activation ID and specify the number of licenses to install on this computer.
5. If you want to license another product, click on . In the new row, enter the appropriate **Activation ID** and the number of licenses you want.

6. If necessary, click  to remove a line.
7. When you have entered all Activation IDs, click **Download Capability Request File (.lic)**, and send it to your partner/installer.

NOTE!

This file allows the partner / installer from whom you purchased the licenses to generate a capability response file (.bin) on the license server.

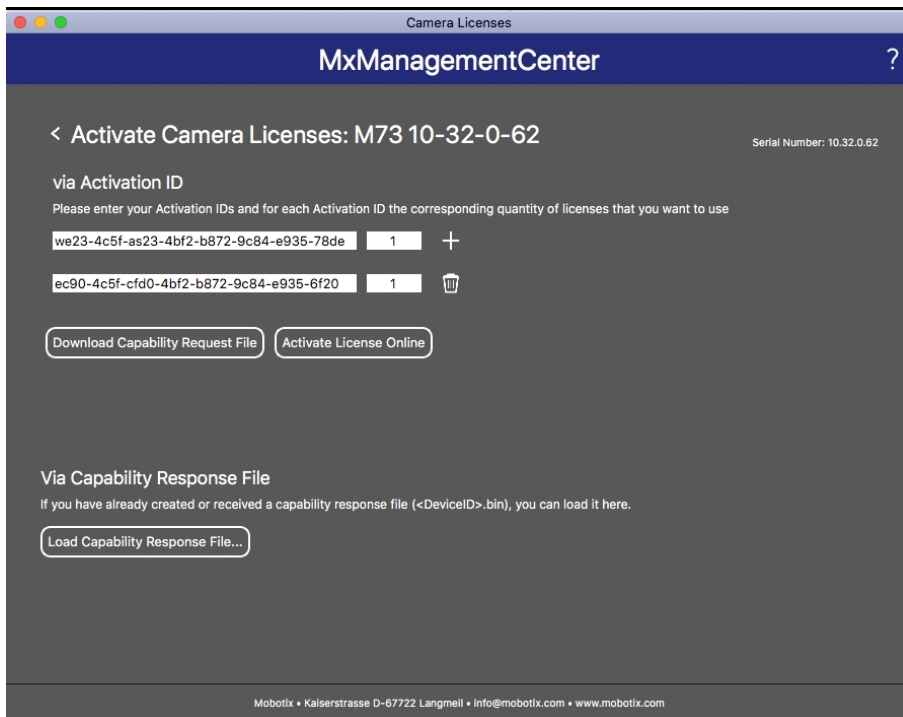


Fig. 7: Adding licenses

8. Click Load Capability Response File and follow the instructions.

Successful activation

After successful activation, a new log in is required to apply the changes. Alternatively, you can return to license management.

Managing Licenses in MxManagementCenter

In MxManagementCenter you can comfortably manage all licenses that have been activated for a camera.

1. Select from the menu **Window > Camera App Licenses**.
2. Select the camera on which you want to license apps and click **Select**.

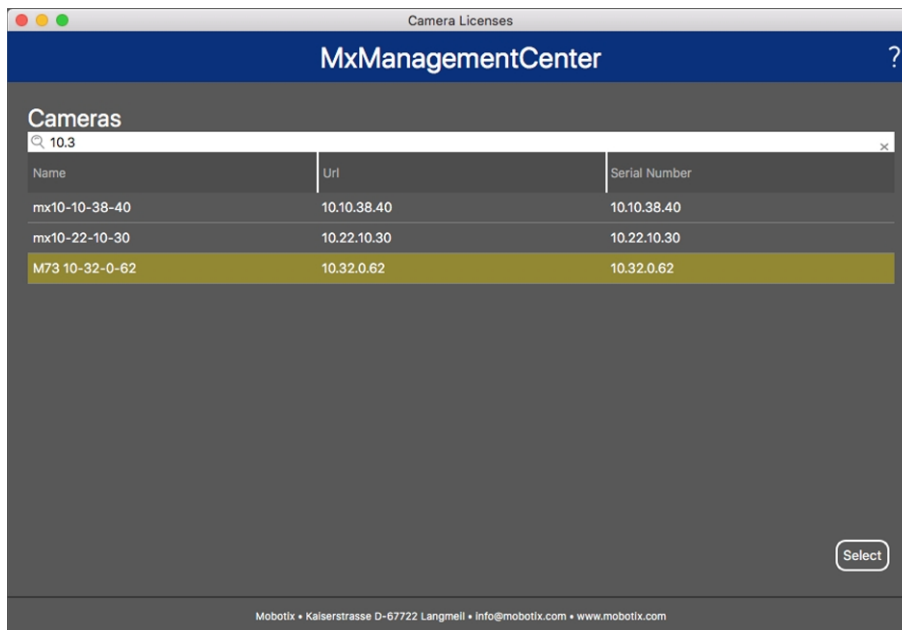


Fig. 8: Overview of Camera App Licenses in MxManagementCenter

An overview of the licenses installed on the camera may be displayed.



Fig. 9: Overview of the licenses installed on the camera

NOTE!

If necessary, correct the time set on the camera.

Column Explanation

Name Name of the licensed app

Expiration the time limit of the license

Quantity Number of licenses purchased for a product.

Serial Num- Unique identification determined by MxMC for the device used. If problems occur during licens-
ber ing, please have the device ID ready.

Synchronize licenses with server

When the program starts, there is no automatic comparison of the licenses between the computer and the license server. Therefore, click **Update** to reload the licenses from the server.

Update licenses

To update temporary licenses, click **Activate Licenses**. The dialog for updating/activating licenses opens.

NOTE!

You need administrator rights to synchronize and update licenses.

Camera, image and scene requirements

The camera should be setup so that the combination of the distance, the lens's focal length and the camera's resolution provide an image that can be accurately analyzed by the OCR. Therefore the following pre-requisites must be fulfilled for the scene:

Quality of the container code to be captured in the image

- The container code must be high-contrast and clearly legible, i.e. as clean as possible, without dents or holes and well illuminated.
- The code must comply with the standard ISO 6346
- Minimum character height
 - The objective of a container code recognition system is to capture an image with a good container code. In order to achieve this all characters of container code should have a height between 20 and 50 pixels.

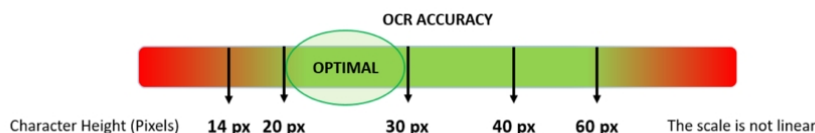


Fig. 10: Minimum character height

- Maximum rotation angle:
 - Vertical: $< 30^\circ$
 - Slope: $< 25^\circ$
 - Horizontal: $< 25^\circ$

Frame rate

The selection of the correct frame rate influences the recognition quality significantly. The recommendation is 10 fps.

Shutter Speed (Exposure time)

Shutter speed, also known as the “exposure time”, is the length of time a camera shutter is open for in order to expose light onto the camera sensor. The shutter speed is measured in seconds, or fractions of a second. The bigger the denominator, the faster the speed. For example, 1/250th means one two-hundred-and-fiftieth of a second or four milliseconds.

(1 second = 1000 milliseconds)

Examples for recommended exposure times

Scene (Street type)	minimum exposure time (sec)
Barrier or Gate	1/250 th (4 milliseconds)

NOTE!

The exposure time must be adjusted according to the light conditions.

Resolution

The resolution of the camera determines the amount of detail that can be captured. The smaller the object detail, the higher the resolution that is required. There are several factors that determine the detail captured:

- The resolution (pixel size) of the camera sensor. This sensor (normally CMOS) where the light eventually falls and a typical IP camera has a sensor resolution of 2 or 4 Megapixels.
- The resolution of the camera's electronics. Most CCTV cameras can support a minimum of 1920 x 1080 – but may be set to a lower resolution if not needed.
- The quality and focal length of the lens. The quality of the optics can play a part in challenging circumstances. The focal length (zoom factor) determines the field of view that can be seen.
- The quality of the images can be influenced by factors such as the type of lighting used.

Examples for recommend resolutions

Scene (Street type)	minimum resolution
Barrier or Gate	800 x 600 px
Roadside Deployment	1280 x 720 px

Focal length

The focal length of the lens determines how “zoomed in” the image is. It is usually expressed in millimeters (e.g., 6 mm, 25 mm, or 50 mm).

The focal length defines the angle of view (how much of the scene will be captured) and the magnification (how large individual elements will be). The longer the focal length, the narrower the angle of view and the higher the magnification. The shorter the focal length, the wider the angle of view and the lower the magnification.

In the case of zoom lenses, both the minimum and maximum focal lengths are stated, for example 10–40 mm.

Examples for recommended focal length

Scene (Street type)	Distance between camera and container code (m)	recommended lens
Barrier or Gate	2 - 6 m	2 - 8 mm or similar
Access road	15 - 30 m	15 - 50 mm or similar

NOTE!

The lens should be **IR corrected** to avoid out of focus images. IR Corrected lenses should be used on both day/night and monochrome cameras in all lighting conditions in order to achieve a crisp sharp image.

Recommendations on mounting and adjusting.

- If you want to recognize container codes on multiple lanes it is generally recommended to mount the camera on a crossbar.
- Shutter speed must be high enough to cut the light from car's headlights at night (usually it's about 1/1000). Keep in mind, that too high shutter speed may obscure the edges of the lines (especially shadows).
- Depth of focus is a very important parameter. If you are using a camera with a CS-mount lens, use a fixed lens. Fixed lens are better for container code recognition due to greater depth of focus. Megapixel lens is also strongly recommended.
- Respect changing light conditions (e. g. due to sunrises and sunset) when choosing the place of mounting. Direct sunlight beams can distort a picture. If the code is facing a direct sunlight consider using a lens with auto iris mode.
- If mounting a camera on a roadside pole check how the pole reacts to heavy cars or a convoy of cars. Some poles have tangible tremor, this could make container code recognition almost impossible.
- It is recommended to turn down WDR and BLC. In most cases, they will make the picture more pretty, but at the cost of smudging details like an edges of letters in the container code. For the same reason keep digital noise reduction as low as possible.
- On certain rare conditions there may be a cases of false detections e. g. because of recognizing image parts that structurally or semantically look similar to a container code(e. g. fences or ads). To minimize this:
 - Adjust the region of interest accordingly. It may be a good idea to make it smaller, or change it's shape, omitting the parts, which potentially may be false detected.
 - There may be cases, when the best performance will occur by changing angle of lens or moving the camera. In some cases, shooting a front container code is better.

Activation of the Certified App Interface

CAUTION! Attention

The Vaxtor Container Code Recognition App does not consider obscure areas defined for the live image. Therefore there is no pixelation in obscure areas while configuring the app and during image analysis by the app.

NOTE! Note

The user must have access to the setup menu ([http\(s\)://<Camera IP address>/control](http(s)://<Camera IP address>/control)). Therefore check the user rights of the camera.

Activation of Certified Apps and events

1. In the camera web interface, open: **Setup Menu / Certified App Settings** ([http\(s\)://<Camera IP address>/control/app_config](http(s)://<Camera IP address>/control/app_config)).

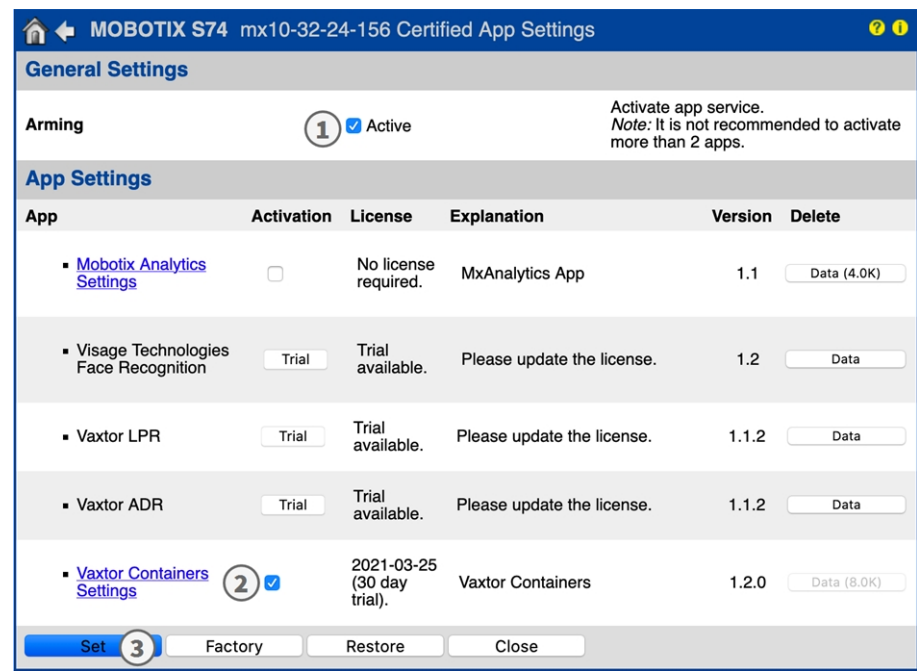


Fig. 11: Activation of Certified Apps

2. Under **General Settings** activate the **Arming** ① of the app service.
3. Under **App Settings** check the **Active** option ② and click **Set** ③ .
4. Click on the name of the App to be configured to open the Apps user interface.
5. For configuration of the App see [FigureNumberOnly](#).

Configuration of Vaxtor Container Code Recognition App

NOTE!

For best performance and results in container code processing make sure to have scene set up to meet the [FigureNumberOnly](#).

CAUTION!

The user must have access to the setup menu ([http\(s\)://<Camera IP address>/control](http(s)://<Camera IP address>/control)). Therefore check the user rights of the camera.

1. In the camera web interface, open: **Setup Menu / Certified App Settings** ([http\(s\)://<Camera IP address>/control/app_config](http(s)://<Camera IP address>/control/app_config)).
2. Click on the name of the **Vaxtor Container Code Recognition App**.

The configuration window of the app appears with the following options:

VAXTOR Containers - Basic Settings

The following configurations should be taken into account:

MOBOTIX S74 mx10-32-24-156 Vaxtor Containers Settings		
Vaxtor Containers		
Read size and type	<input checked="" type="checkbox"/>	Read container size and type information
Layout	Both	Read horizontal codes, vertical codes or both
Same Code Delay	60	Minimum elapsed time to report the same code twice (seconds)
Working Mode	freeflow	Signaled: The application will only attempt to read a container code when the signal is activated. Freeflow: The application continuously captures container codes.
Enable MxMessage	<input checked="" type="checkbox"/>	Send a mxmessage when a container code is read
Enable Overlay	<input checked="" type="checkbox"/>	Display an overlay on all the sensors when a container code is read

Fig. 12: Basic settings

Read size and type: Check to read container size and type information

Layout: Select the which code layout types should be read. The options are.

Both

Horizontal codes

Vertical codes

Same code delay: Define the minimum elapsed time to report the same code twice (seconds).

Working mode: The following modes are available:

Free flow: The application continuously captures container code numbers.

Signaled: The application will only attempt to read a license plate number when the signal (trigger) is activated.

Note

In signaled mode an signal ID will be sent with the signal event.

MxMessage: Check to enable the processing of LPR events in the MxMessageSystem.

Enable Overlay: Check to enable the display of the container code recognition result in the live view.

Recognition Areas

A Recognition Area, an area within the video frame where the OCR analytics takes place. You can draw a polygon and choose whether the area to look for plates in Inside or Outside this region. You can set multiple areas to respect complex situations.

NOTE!

Note

Using Recognition Area can decrease OCR processing time and also reduce false positives. The whole container code must be in or out the Recognition Area to pass the test.

Recognition Areas

Recognition Area Type

inclusion

Recognition Area Type. Inclusion: only the plates inside the recognition area will be detected. Exclusion: only the plates outside the recognition area will be detected

Show Recognition Area

☐

Show the recognition area on the OCR sensor

Edit Recognition Area

Position

732

x

373

Size

410

x

280

Set Rectangle

SHIFT + Click on the image to mark the left-top corner then Click without SHIFT to mark the right-bottom corner. Press "Set Rectangle" when done

Fig. 13: Recognition Areas

Recognition Area Type: Check to activate the sending of events according to the following configuration

Inclusion: only the plates inside the recognition area will be detected.

Exclusion: only the plates outside the recognition area will be detected.

Show Recognition Area: Check to display the recognition area in the camera image.

Drawing a Recognition Area

1. In the live view hold the **Shift** key and click the upper left corner point of the recognition area.
2. Release the **Shift** key and click on the lower right corner point of the recognition area.
3. In the configuration interface click **Set Rectangle** to adopt the coordinates of the rectangle.
4. Optionally click the **bin** icon to delete the recognition area.

List Management

You can define a black list and a white list with up to 1000 container codes per list. If a container code from one of the lists is recognized, a corresponding event is sent within the MxMessageSystem of the camera.

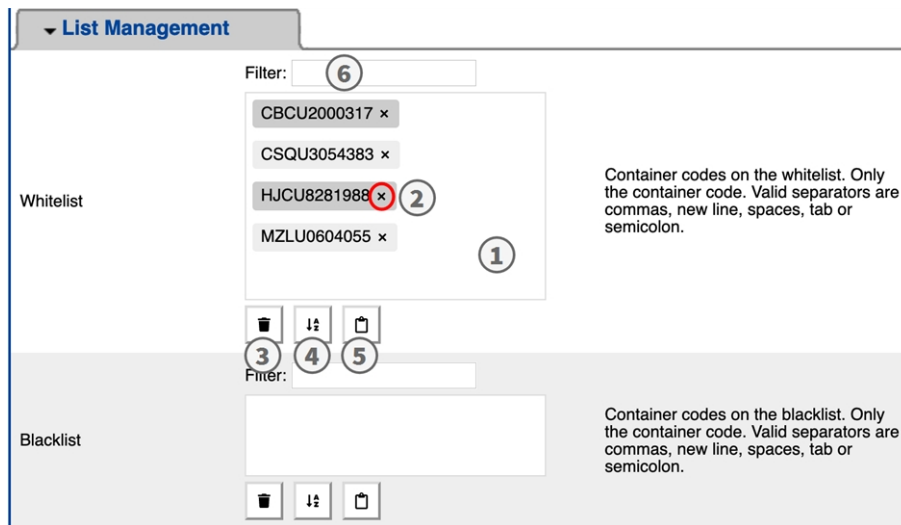


Fig. 14: Black and white lists

Adding a container code to a list

1. Enter the container code text into the text field ① and click **Enter**.

Adding multiple license plates from a text file

1. Make sure that your text file contains one license plate per line.
2. Copy the relevant license plates from the text file and paste them into the text field ①.

Deleting a container code from a list

1. Click on the small x ② to the right of the license plate number.

Deleting all container codes from a list

1. Click the trash icon ③.

Sorting all container codes from a list alphabetically

1. Click the sort icon ④.

Copy all container codes from a list to the clip board

1. Click the copy to clipboard icon ⑤.

Filtering container codes

- 1. Enter the license plate or parts of it into the filter text field ⑥ . Only license plates containing the filter text are displayed accordingly

Video

In the video tab you can specify video quality of the video to be analyzed.

Video

OCR Sensor	Right sensor	Sensor used to recognize containers
Overview Sensor	None	Sensor used to capture overview images when a container code is detected
Resolution	1920x1080	Working resolution. Adjust the resolution and the camera zoom to capture the containers codes on the optimum range. Changing this option will require a camera reboot
Minimum Character Height	18	Minimum character height in pixels (14-70). Tip: optimal reading size is 25 pixels height
Maximum Character Height	42	Maximum character height in pixels (14-70). Tip: optimal reading size is 25 pixels height

Fig. 15: Video

OCR sensor: Select the camera sensor to be used for container code recognition.

Note

Changing this option requires a camera reboot.

Overview Sensor: Optionally select a sensor used to capture overview images when a plate is detected.

Resolution: Set the working resolution (current maximum is 1080p). Adjust the resolution and the camera zoom to capture the codes on the optimum range.

Note

Changing this option requires a camera reboot.

Minimum Character Height: the minimum height that a container code’s characters should be before being read. The characters should be about 20-30 pixels high.

Maximum Character Height: the maximum height is about 20-30 pixels.

Note

The recommended difference between the min and max heights is about 10 pixels.

OCR

In the OCR (Optical Character Recognition) tab you can set parameters to ensure the best possible recognition results.



Fig. 16: OCR

Analytics Complexity: This is the complexity of the analytics to be applied during the OCR engine's stage of plate reading. Set this according to the OCR mode and type of traffic expected. There are three options.

Low: Recommended for very high-speed traffic where the OCR needs to work faster and your preference is for plate detection over perfect recognition.

Medium (Default) Recommended when the OCR mode is set to free-flow.

High: Recommended when the OCR mode is set to signal (triggered).

CAUTION!

Higher complexities give more accurate reading but make the ALPR engine run slower.

Reporting

Vaxtor Container Code Recognition App is able to output all plate reads in real time using a variety of standard protocols so that the plate reads can be accepted remotely by a variety of programs including Vaxtor's powerful Back Office - Helix, which can accept and store plate reads in real time from hundreds cameras.

By selecting one of the listed protocols, a sub-menu will appear with fields for setting up parameters such as remote IP addresses etc.

Configuration of Vaxtor Container Code Recognition App

Recommendations on mounting and adjusting.

▼ Reporting		
Retry Notifications	<input checked="" type="checkbox"/>	Retry failed notifications (Helix-6 and JSON only)
Retry Period	1	Amount of seconds between notification retries
Send Test	<input type="checkbox"/>	Send a fake read (TEST) when settings are stored or when the camera is started
Text Overlay		
Overlay Template	<code>\$date\$ - \$containercode\$</code>	Template to use on the overlay, check the manual for available keywords
Fade out timer	0	Amount of seconds that the overlay will be visible or 0 to make it perpetual
Show container code image	<input type="checkbox"/>	Display a small image with the container code detected
Image position (x)	5	Coordinate position for the image (x)
Image position (y)	50	Coordinate position for the image (y)
MxMessage		
MxMessage Template	<code>de: "\$confidencecode\$"</code>	Defines the template of customized part of the MxMessage. Check the manual for available keywords
Subpath		
Vaxtor Helix-6		
Enable	<input type="checkbox"/>	Send all results to the configured Helix-6 server
JSON		
Enable	<input type="checkbox"/>	Enable JSON HTTP/HTTPS POST reporting
XML		
Enable	<input type="checkbox"/>	Enable XML HTTP/HTTPS POST reporting
Milestone Analytic Event		
Enable	<input type="checkbox"/>	Enable analytic event reporting
TCP Server		
Enable	<input type="checkbox"/>	Enable TCP server reporting

Fig. 17: Reporting

Retry notifications: Check to retry failed notifications (Helix-6 and JSON only).

Retry period: Amount of seconds between notification retries

Send test: Check to send a fake read (TEST) when settings are stored or when the camera is started.

Text Overlay

Overlay Template: Define template to use on the overlay. Check the [Template Fields](#) for available keywords.

Fade out timer: Set the amount of seconds that the overlay will be visible or 0 to make it perpetual.

Show container code image: Check to display a small image with the container code detected.

Image position (x): x coordinate position for the image.

Image position (y): y coordinate position for the image.

MxMessage

MxMessage Template: Define template of customized part of the MxMessage . Check the [Template Fields](#) for available keywords.

Subpath: Define a subpath for the MxMessage. Check the [Template Fields](#) for available keywords.

Vaxtor Helix-6 : Helix-6 protocol is an encrypted version of the Vaxtor protocol.

Enable : Check to send all results to the configured Helix-6 server.

JSON : JSON is a compact data format in an easy-to-read text form for data exchange between applications.

Enable : Check to enable JSON HTTP/HTTPS POST reporting.

XML : XML is a compact data format in an easy-to-read text form for data exchange between applications.

Enable : Enable XML HTTP/HTTPS POST reporting

Milestone Analytic Event : With the Analytics Events feature it is possible to send MAD (Milestone Alert Data) formatted alerts to the Milestone XProtect event server over TCP/IP.

Enable : Enable analytic event reporting

TCP Server:

Enable : Enable TCP server reporting

Advanced

In this section you find useful tools for calibration and trouble shooting.

▼ Advanced	
Log level	info
Show Log File On Screen	<input type="checkbox"/>
Sensor	Right sensor
Show Calibration Grid	<input type="checkbox"/>

Info: Default log level. Debug: Enable debug log level, useful to diagnostic messages recieved from third parties. Trace: Enable trace log level, useful to diagnostic messages send to third parties.

If enabled, the on-screen log file will be displayed on the selected sensor

Sensor where the on-screen log file is displayed

If enabled, display on the OCR sensor a 20 pixels height grid

Fig. 18: Advanced

Log level: Select a debug level to generate a log file, which can be helpful e.g. for trouble shooting.

Info: Default log level

Trace: Select e. g. for diagnostic messages received from third parties

Debug: Select for complete log files for debug purposes

Show log file on screen: Check to display the on-screen log file on the selected sensor

Sensor: Select the sensor on which the on-screen log file is displayed

Show Calibration Grid: Check to display on the OCR sensor a 20 pixels height grid

Storing the Configuration

To store the configuration you have the following options:

Set Factory Restore Close

Fig. 19: Storing the configuration

- Click on the **Set** button to activate your settings and to save them until the next reboot of the camera.
- Click on the **Factory** button to load the factory defaults for this dialog (this button may not be present in all dialogs).

Configuration of Vaxtor Container Code Recognition App

Recommendations on mounting and adjusting.

- Click on the **Restore** button to undo your most recent changes that have not been stored in the camera permanently.
- Click on the **Close** button to close the dialog. While closing the dialog, the system checks the entire configuration for changes. If changes are detected, you will be asked if you would like to store the entire configuration permanently.

After successfully saving the configuration, the event and meta data are automatically sent to the camera in case of an event.

About MxMessageSystem

What is MxMessageSystem?

MxMessageSystem is a communication system based on name oriented messages. This means that a message must have a unique name with a maximum length of 32 bytes.

Each participant can send and receive messages. MOBOTIX cameras can also forward messages within the local network. This way, MxMessages can be distributed over the entire local network (see Message Area: Global).

For example, a MOBOTIX 7 series camera can exchange an MxMessage generated by a camera app with an Mx6 camera that does not support certified MOBOTIX apps.

Facts about MxMessages

- 128-bit encryption ensures privacy and security of message content.
- MxMessages can be distributed from any camera of the Mx6 and 7 series.
- The message range can be defined individually for each MxMessage.
 - **Local:** Camera expects an MxMessage within its own camera system (e.g. through a Certified App).
 - **Global:** the camera expects an MxMessage that is distributed in the local network by another MxMessage device (e.g. another camera of the 7 series equipped with a certified MOBOTIX app).
- Actions that the recipients are to perform are configured individually for each participant of the MxMessageSystem.

Basic configuration: Processing the automatically generated app events

Checking automatically generated app events

NOTE!

After successfully activating the app (see [FigureNumberOnly](#)), a generic message event for this specific app is automatically generated in the camera.

1. Go to **Setup-Menu / Event Control / Event Overview**. In section **Message Events** the automatically generated message event profile is named after the application (e. g. VaxOCRContainer).

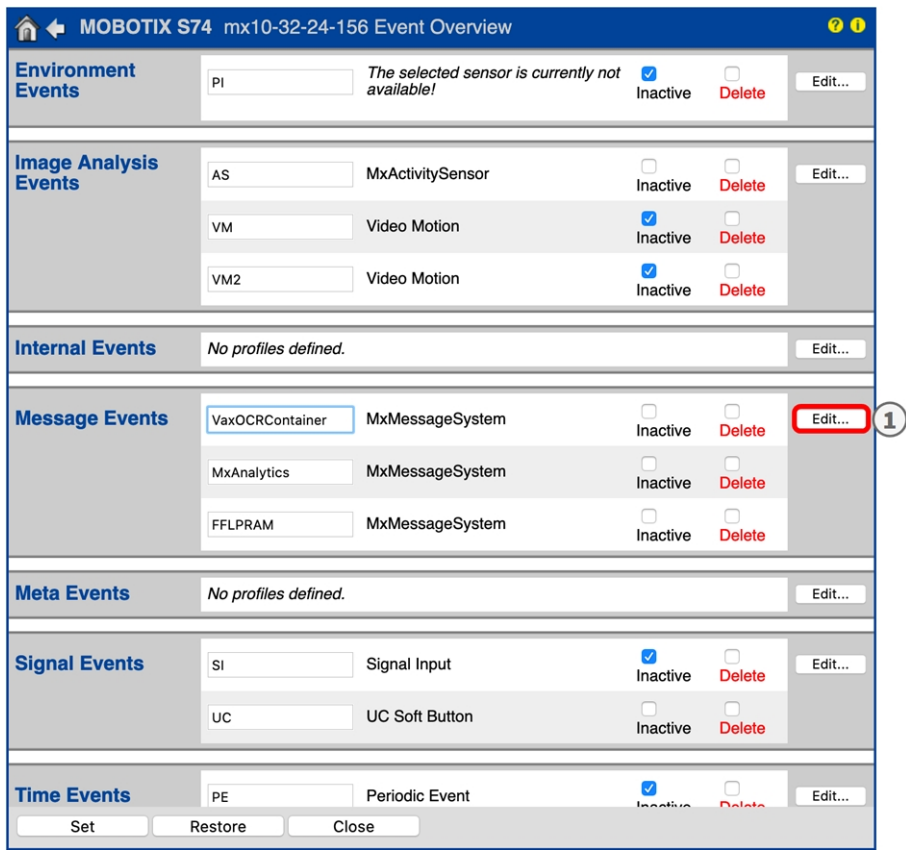


Fig. 20: Example: Generic message event from Vaxtor Container Code Recognition App

- Click **Edit**^① to display a selection of all configured message events.

Attribute	Value	Explanation
IP Receive	8000	Port: TCP port to listen on.
Events	VaxOCRContainer	Inactive Delete
	5	Event Dead Time: Time to wait [0..3600 s] before the event can trigger anew.
Event Sensor Type	<input type="radio"/> IP Receive <input checked="" type="radio"/> MxMessageSystem	Event Sensor Type: Choose the message sensor.
Event on receiving a message from the MxMessageSystem.		
	VaxOCRContainer	Message Name: Defines an MxMessageSystem name to wait for.
	Local	Message Range: There are two different ranges of message distribution: Global: across all cameras within the current LAN. Local: camera internal.
	No Filter	Filter Message Content: Optionally choose how to ignore messages containing Filter Value. Select No Filter to trigger on any message with defined Message Name.

Fig. 21: Example: Generic message event details - no filter

Action handling - Configuration of an action group

CAUTION!

To use events, trigger action groups or record images the general arming of the camera must be enabled ([http\(s\)://<Camera IP address>/control/settings](http(s)://<Camera IP address>/control/settings))

An action group defines which action(s) is (are) triggered by the Vaxtor Container Code Recognition App event.

- In the camera web interface, open: **Setup Menu / Action Group Overview** ([http\(s\)://<Camera IP address>/control/actions](http(s)://<Camera IP address>/control/actions)).

Name	Arming	Events & Actions	Edit
VisualAlarm	Off	(select all) VA	Edit...
Vax_Container_Action	Enabled	MSG SD	Edit... ^②

Add new group^①

Set Restore Close

Fig. 22: Defining Action Groups

- Click **Add new group**^① and give a meaningful name.
- Click **Edit**^②, to configure the group.

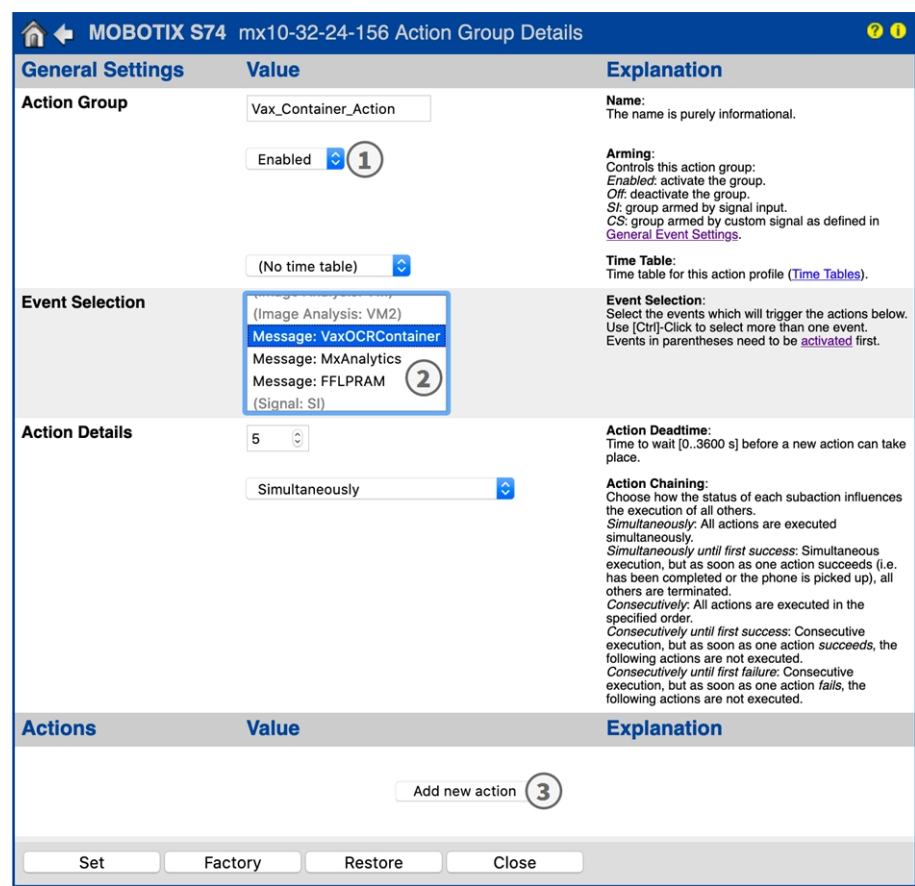


Fig. 23: Configuring an Action Group

1. Enable **Arming**① of the Action Group.
2. Select your message event in the **Event selection** list ② . To select multiple events, hold the shift key.
3. Click **Add new Action**③ .
4. Select a proper action from list **Action Type and Profile**④ .

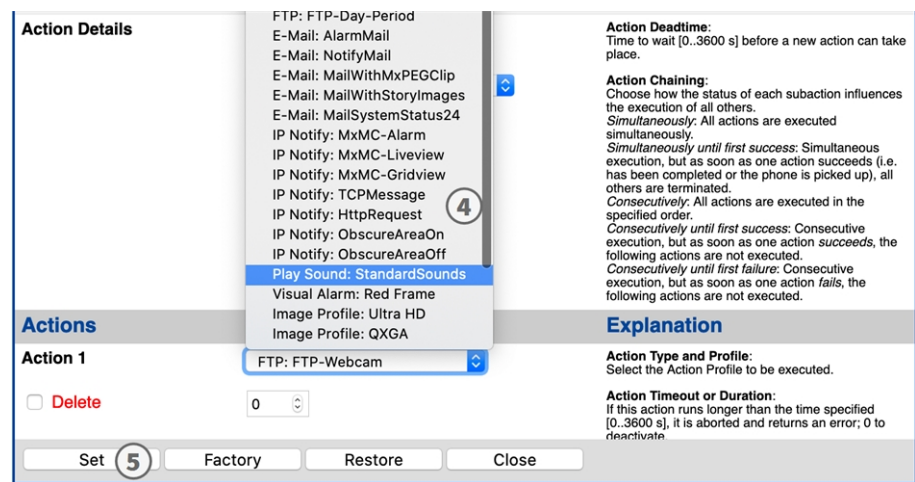


Fig. 24: Select Action Type- and Profile

NOTE!

If the required action profile is not yet available, you can create a new profile in the Admin Menu sections "MxMessageSystem", "Transfer Profiles" and "Audio and VoIP Telephony".

If necessary, you can add further actions by clicking the button again. In this case, please make sure that the "action chaining" is configured correctly (e.g. at the same time).

- Click on the **Set** button at the end of the dialog box to confirm the settings.

Action settings - Configuration of the camera recordings

- In the camera web interface, open: **Setup Menu / Event Control / Recording**(http(s)/<Camera IP address>/control/recording).

General Settings	Value	Explanation
Arming	Enabled 1	Arm Recording: Controls camera recording. <i>Enabled:</i> activate recording. <i>Off:</i> deactivate recording. <i>SI:</i> recording armed by signal input. <i>CS:</i> recording armed by custom signal as defined in General Event Settings . <i>From Master:</i> copies recording arming state from master camera.
	(No time table)	Time Table Profile: Time table profile for time-controlled recording (Time Tables).
Storage Settings	Value	Explanation
Recording (REC)	Event Recording 2	Recording Mode: Type of event and story recording. <i>Snap Shot Recording:</i> stores single JPEG pictures. <i>Event Recording:</i> stores stream files for every event using MxPEG codec. <i>Continuous Recording:</i> continuously streams video data to stream files using MxPEG codec. Events can be recorded with a higher frame rate using <i>Start Recording</i> , <i>Retrigger Recording</i> and <i>Stop Recording</i> .
Start Recording	<div> <div>(Image Analysis: VM2) 3</div> <div>Message: VaxOCRContainer</div> <div>Message: MxAnalytics</div> <div>Message: FFLPRAM</div> <div>(Signal: SI)</div> </div> <div> Max fps 0 10 s </div>	Start Recording: Select the events which will start recording. Use [Ctrl]-Click to select more than one event. Events in parentheses need to be <i>activated</i> first. Event Frame Rate: Recording speed if an event is detected, in frames per second. Recording Time Before Event: Additional recording time before an event in seconds. Recording Time: Time to include in recorded stream after an event has occurred.

Set 4 Factory Restore Close 5 More

Fig. 25: Configuration of camera recording settings

- Activate **Arm Recording** 1 .
- Under **Storage Settings / Recording (REC)** select a **Recording mode** 2 . The following modes are available:
 - Snap Shot Recording
 - Event Recording
 - Continuous Recording
- In list **Start recording** 3 select the message event just created.
- Click on the **Set** 4 button at the end of the dialog box to confirm the settings.

6. Click on **Close** ⓘ to save your settings permanently.

NOTE!

Alternatively, you can save your settings in the Admin menu under Configuration / Save current configuration to permanent memory.

Advanced Configuration: Processing the meta data transmitted by apps

Meta data transferred within the MxMessageSystem

For each event, the app also transfers meta data to the camera. This data is sent in the form of a JSON schema within an MxMessage.

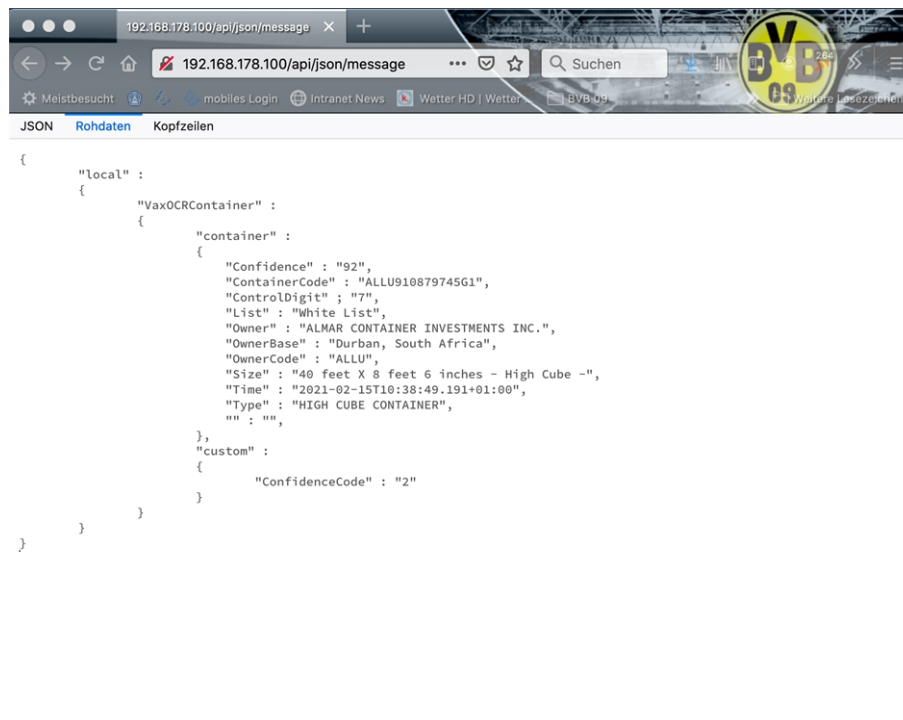


Fig. 26: Example: Meta data transmitted within an MxMessage of the Vaxtor Container Code Recognition App

NOTE!

To view the meta data structure of the last App event, enter the following URL in the address bar of your browser: [http\(s\)/IPAdresseOfYourCamera/api/json/messages](http(s)/IPAdresseOfYourCamera/api/json/messages)

Creating a Custom Message Event

1. Go to **Setup-Menu / Event Control / Event Overview**. In section **Message Events** the automatically generated message event profile is named after the application (e. g. VaxOCRContainer).

MOBOTIX S74

mx10-32-24-156

Event Overview

Environment Events	PI	The selected sensor is currently not available!	<input checked="" type="checkbox"/> Inactive	<input type="checkbox"/> Delete	Edit...
Image Analysis Events	AS	MxActivitySensor	<input type="checkbox"/> Inactive	<input type="checkbox"/> Delete	Edit...
	VM	Video Motion	<input checked="" type="checkbox"/> Inactive	<input type="checkbox"/> Delete	
	VM2	Video Motion	<input checked="" type="checkbox"/> Inactive	<input type="checkbox"/> Delete	
Internal Events	No profiles defined.				Edit...
Message Events	VaxOCRContainer	MxMessageSystem	<input type="checkbox"/> Inactive	<input type="checkbox"/> Delete	Edit... 1
	MxAnalytics	MxMessageSystem	<input type="checkbox"/> Inactive	<input type="checkbox"/> Delete	
	FFLPRAM	MxMessageSystem	<input type="checkbox"/> Inactive	<input type="checkbox"/> Delete	
Meta Events	No profiles defined.				Edit...
Signal Events	SI	Signal Input	<input checked="" type="checkbox"/> Inactive	<input type="checkbox"/> Delete	Edit...
	UC	UC Soft Button	<input type="checkbox"/> Inactive	<input type="checkbox"/> Delete	
Time Events	PE	Periodic Event	<input checked="" type="checkbox"/> Inactive	<input type="checkbox"/> Delete	Edit...

Set

Restore

Close

Fig. 27: Example: Generic message event from Vaxtor Container Code Recognition App

- Click **Edit** ① to display a selection of all configured message events.

The screenshot shows the MOBOTIX S74 configuration interface for message events. The title bar indicates 'mx10-32-24-156 Message Events'. The interface is divided into sections for attributes and events. The 'VaxOCRContainer' event is selected and its settings are displayed. The settings include: Event Dead Time (5s), Event Sensor Type (MxMessageSystem), Message Name (VaxOCRContainer.container.L), Message Range (Local), Filter Message Content (JSON Comparison), and Filter Value ('Black List'). The 'Set' button is highlighted with a circled 4.

Fig. 28: Example: Blacklist message event

- Click on the event (e. g. VaxOCRContainer) ① to open the event settings.
 - Configure the parameters of the event profile as follows:
 - **Message Name:** Enter the "Message Name" ② according to the event documentation of the corresponding app (see [FigureNumberOnly](#))
 - **Message Range:**
 - Local: Default settings for the Vaxtor Container Code Recognition App
 - Global: (MxMessage is forwarded from another MOBOTIX camera in the local network.
 - **Filter Message Content:**
 - Generic Event: "No Filter"
 - Filtered Event: "JSON Equal Compare"
- Filter Value:** ③ see [FigureNumberOnly](#).

CAUTION!

"Filter Value" is used to differentiate the MxMessages of an app / bundle. Use this entry to benefit from individual event types of the apps (if available).

Choose "No Filter" if you want to use all incoming MxMessages as generic event of the related app.

- Click on **Set** ④ at the end of the dialog box to confirm the settings.

Examples for message names and filter values of the Vaxtor Container Code Recognition App

	MxMessage-Name	Filter value
Generic Event	VaxOCRContainer	
Whitelist Event	VaxOCRContainer.container.List	“White list”
Blacklist Event	VaxOCRContainer.container.List	“Black list”
Not listed Event	VaxOCRContainer.container.List	“Not listed”
Unique container code event	VaxOCRContainer.container.ContainerCode	Container code as “STRING”; e.g. “ALLU910879745G1” (compare FigureNumberOnly)
Owner Code Event	VaxOCRContainer.container.OwnerCode	e.g. “ALLU”
Container Type Event	VaxOCRContainer.container.Type	e.g. “HIGH CUBE CONTAINER”



EN_06/21

MOBOTIX AG • Kaiserstrasse • D-67722 Langmeil • Tel.: +49 6302 9816-103 • sales@mobotix.com • www.mobotix.com

MOBOTIX is a trademark of MOBOTIX AG registered in the European Union, the U.S.A., and in other countries. Subject to change without notice. MOBOTIX do not assume any liability for technical or editorial errors or omissions contained herein. All rights reserved. © MOBOTIX AG 2018