

# Guideline

## MOBOTIX Visage Technologies Face Recognition App

© 2021 MOBOTIX AG

98,9%  
John



# Table of Contents

<b>Table of Contents</b>	<b>2</b>
<b>Before You Start</b>	<b>3</b>
Support	4
Legal Notes	4
<b>About Visage Technologies Face Recognition App</b>	<b>6</b>
Smart Data Interface to MxManagementCenter	6
<b>Technical Specifications</b>	<b>8</b>
<b>Licensing Certified Apps</b>	<b>10</b>
License Activation of Certified Apps in MxManagementCenter	10
Managing Licenses in MxManagementCenter	14
<b>Activation of the Certified App Interface</b>	<b>17</b>
<b>Configuration of Visage Technologies Face Recognition App</b>	<b>18</b>
Storing the Configuration	20
<b>MxMessageSystem</b>	<b>21</b>
What is MxMessageSystem?	21
Facts about MxMessages	21
<b>Basic configuration: Processing the automatically generated app events</b>	<b>22</b>
<b>Advanced Configuration: Processing the meta data transmitted by apps</b>	<b>26</b>
Meta data transferred within the MxMessageSystem	26
Creating a Custom Message Event	27
Examples for message names and filter values of the Visage Technologies Face Recognition App	28

## Before You Start

This section contains the following information:

<b>Support</b> .....	<b>4</b>
<b>Legal Notes</b> .....	<b>4</b>

# Support

If you need technical support, please contact your MOBOTIX dealer. If your dealer cannot help you, he will contact the support channel to get an answer for you as quickly as possible.

If you have internet access, you can open the MOBOTIX help desk to find additional information and software updates. Please visit:

[www.mobotix.com](http://www.mobotix.com) > [Support](#) > [Help Desk](#)



## Legal Notes

### Special Export Regulations!

Cameras with thermal image sensors ("thermal cameras") are subject to the special export regulations of the U.S.A. and including the ITAR (International Traffic in Arms Regulation):

- According to the currently applicable export regulations of the U.S.A. and the ITAR, cameras with thermal image sensors or parts thereof must not be exported to countries embargoed by the U.S.A., except if a special permit can be presented. At present, this applies to the following countries: Crimea region of Ukraine, Cuba, Iran, North Korea, Sudan, and Syria. The same export ban applies to all persons and institutions listed in "The Denied Persons List" (see [www.bis.doc.gov](http://www.bis.doc.gov), "Policy Guidance > Lists of Parties of Concern"; <https://www.treasury.gov/resource-center/sanctions/sdn-list/pages/default.aspx>).
- Under no circumstances must the camera itself or its thermal image sensors be used in the design, the development or in the production of nuclear, biological or chemical weapons or in the weapons themselves.

### Legal Aspects of Video and Sound Recording

You must comply with all data protection regulations for video and sound monitoring when using MOBOTIX AG products. Depending on national laws and the installation location of the cameras, the recording of video and sound data may be subject to special documentation or it may be prohibited. All users of MOBOTIX

products are therefore required to familiarize themselves with all applicable regulations and to comply with these laws. MOBOTIX AG is not liable for any illegal use of its products.

## Declaration of Conformity

The products of MOBOTIX AG are certified according to the applicable regulations of the EC and other countries. You can find the declarations of conformity for the products of MOBOTIX AG on [www.mobotix.com](http://www.mobotix.com) under **Support > Download Center > Certificates & Declarations of Conformity**.

## RoHS Declaration

The products of MOBOTIX AG are in full compliance with European Unions Restrictions of the Use of Certain Hazardous Substances in Electrical and Electronic Equipment (RoHS Directive 2011/65/EC) as far as they are subject to these regulations (for the RoHS Declaration of MOBOTIX, please see [www.mobotix.com](http://www.mobotix.com), **Support > Download Center > Documentation > Brochures & Guides > Certificates**).

## Disposal

Electrical and electronic products contain many valuable materials. For this reason, we recommend that you dispose of MOBOTIX products at the end of their service life in accordance with all legal requirements and regulations (or deposit these products at a municipal collection center). MOBOTIX products must not be disposed of in household waste! If the product contains a battery, please dispose of the battery separately (the corresponding product manuals contain specific directions if the product contains a battery).

## Disclaimer

MOBOTIX AG does not assume any responsibility for damages, which are the result of improper use or failure to comply to the manuals or the applicable rules and regulations. Our General Terms and Conditions apply. You can download the current version of the **General Terms and Conditions** from our website at [www.mobotix.com](http://www.mobotix.com) by clicking on the corresponding link at the bottom of every page.

# About Visage Technologies Face Recognition App

## Face Recognition for Access Control

The app compares and recognizes faces based on encrypted image data stored in the camera (face descriptors, not real image files). The application has a 97 % hit probability for access applications. The app can be tested free of charge for 30 days and can be activated for a period of either 12 or 24 months. The app is ideally suited for the following industries: Utilities, Energy & Mining; Industry & Production; Government; Traffic & Transportation; Retail; Healthcare; Education & Education.

- App works as an extended security level for access controls, login terminals, transactions, etc.
- Works with camera online and offline
- Delivers quick and reliable results
- Configuration of the app also via MxManagementCenter (free Advanced Config license required)
- Can be used with all cameras of the MOBOTIX 7 system platform

**CAUTION!** Thermal sensors are not supported by this app.

## Smart Data Interface to MxManagementCenter

This app has a Smart Data interface to MxManagementCenter.

With the MOBOTIX Smart Data System, transaction data can be linked to the video recordings made at the time of the transactions. Smart Data source can be e.g. MOBOTIX Certified Apps (no license required) or general Smart Data sources (license required) like POS systems or license plate recognition systems.

The Smart Data System in MxManagementCenter enables you to quickly find and review any suspicious activities. The Smart Data Bar and the Smart Data View are available for searching and analyzing transactions. The Smart Data Bar provides a direct overview of the most recent transactions (from the last 24 hours) and for this reason it is convenient to use it for reviews and searches.

**NOTE!** For information on how to use the Smart Data System, see the corresponding online help of the camera software and MxManagementCenter.

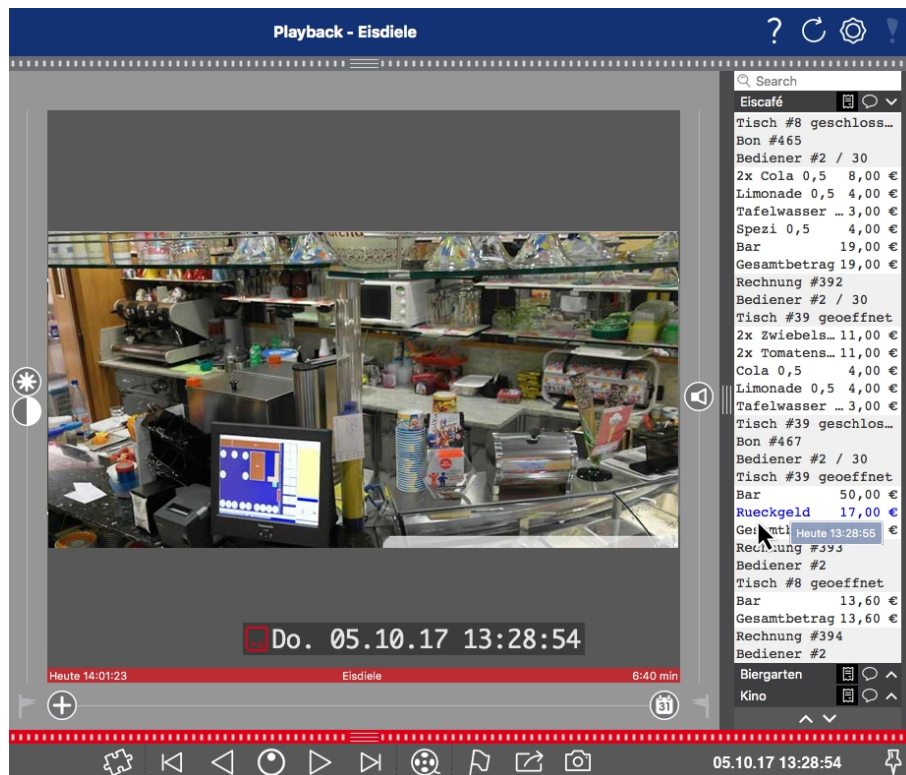


Fig. 1: : Smart Data Bar in MxManagementCenter (Example: POS System)

# Technical Specifications

## Product Information

Product Name	Visage Technologies Face Recognition App
Order Code	Mx-APP-VIS-FR-1 (one-year license) Mx-APP-VIS-FR-2 (two-year license)
Supported MOBOTIX Cameras	Mx-M73A, Mx-S74A
Minimum Camera Firmware	V7.0.4.x
MxManagementCenter Integration	<ul style="list-style-type: none"><li>▪ min.MxMC v2.2</li><li>▪ Advanced Config license required</li><li>▪ Smart Data Interface (Recognition Log)</li></ul>

## Product Features

App Features	<ul style="list-style-type: none"><li>▪ Completely edge processed</li><li>▪ Face Detection &amp; Recognition optimized for access control scenarios</li><li>▪ MOBOTIX events via MxMessageSystem</li><li>▪ White- and blacklisting</li><li>▪ Recognition log</li></ul>
Maximum number of simultaneously detected / recognized faces	4
Maximum number of enrolled faces	1000
Meta Data / Statistic formats	JSON
Trial License	30-day trial license pre-installed
MxMessageSystem supported	Yes
Interfaces	compare supported camera’s interfaces



MOBOTIX Events	Yes
ONVIF Events	Yes (Generic Message event)

## Scene Requirements

Minimum face height	1/10 of live image resolution (e.g. 30px @ VGA)
Recommended installation height (camera)	165 – 210 cm
Maximum Horizontal Angle	10°
Maximum Tilt Angle	5°

## Technical App Specifications

Synchronous / Asynchronous App	Asynchronous
Accuracy	Typ. 97% (considering scene & technical requirements)
Processed number of frames per second	Typ. 2 fps
Recognition time	< 1 s
Detection time	Typ. 80 ms
Size of individual face data set	1 kB

# Licensing Certified Apps

The following licenses are available for the Visage Technologies Face Recognition App:

- **30-day test license** pre-installed
- **permanent commercial license**

The usage period begins with activation of the app interface (see [Activation of the Certified App Interface](#), p. 17)

**NOTE!** For buying or renewing a license, contact your MOBOTIX Partner.

**NOTE!** Apps are usually pre-installed with the firmware. In rare cases, apps must be downloaded from the website and installed. In this case see [www.mobotix.com](http://www.mobotix.com) > **Support** > **Download Center** > **Marketing & Documentation**, download and install the app.

## License Activation of Certified Apps in MxManagementCenter

After a test period commercial licenses must be activated for use with a valid license key.

### Online-Activation

After receiving the activation IDs, activate them in MxMC as follows:

1. Select from the menu **Window > Camera App Licenses**.
2. Select the camera on which you want to license apps and click **Select**.

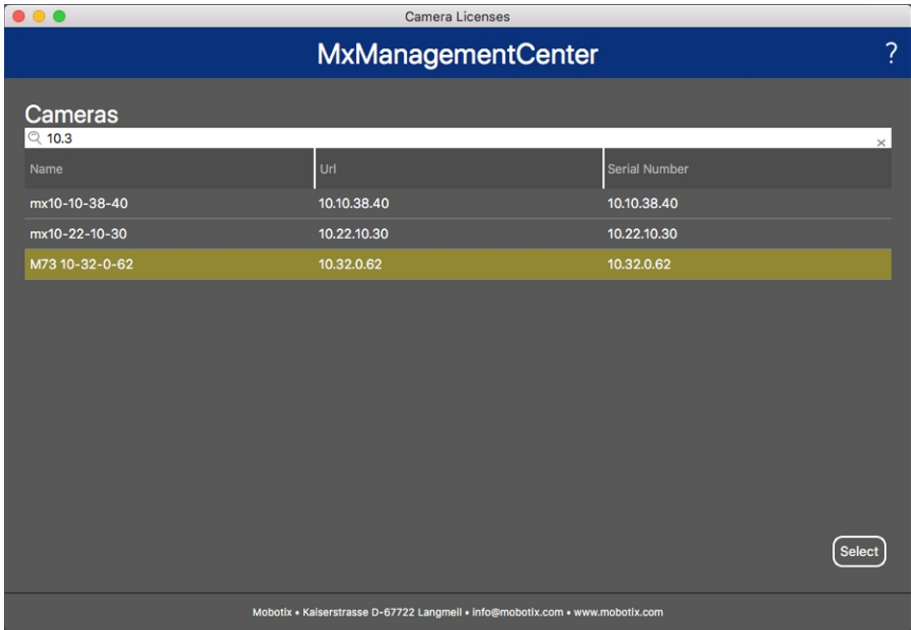


Fig. 2: Overview of Camera App Licenses in MxManagementCenter

**NOTE!** If necessary, correct the time set on the camera.

1. An overview of the licenses installed on the camera may be displayed. Click **Activate License**.

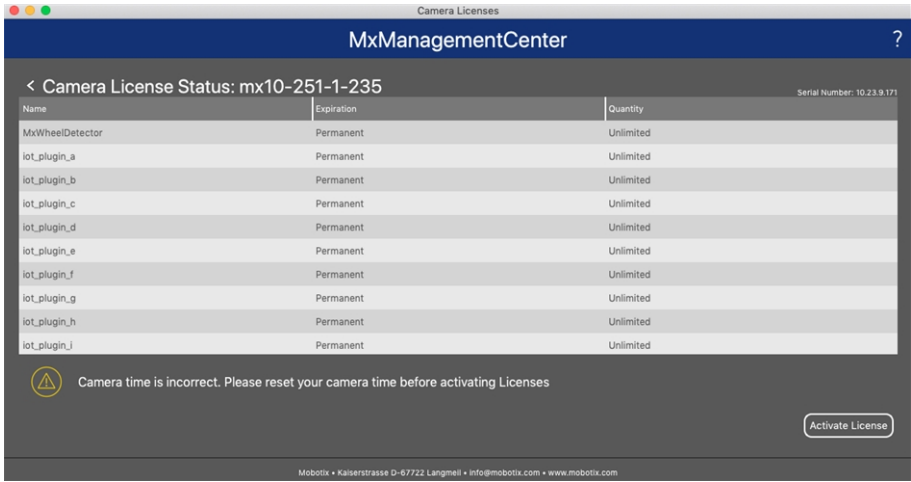


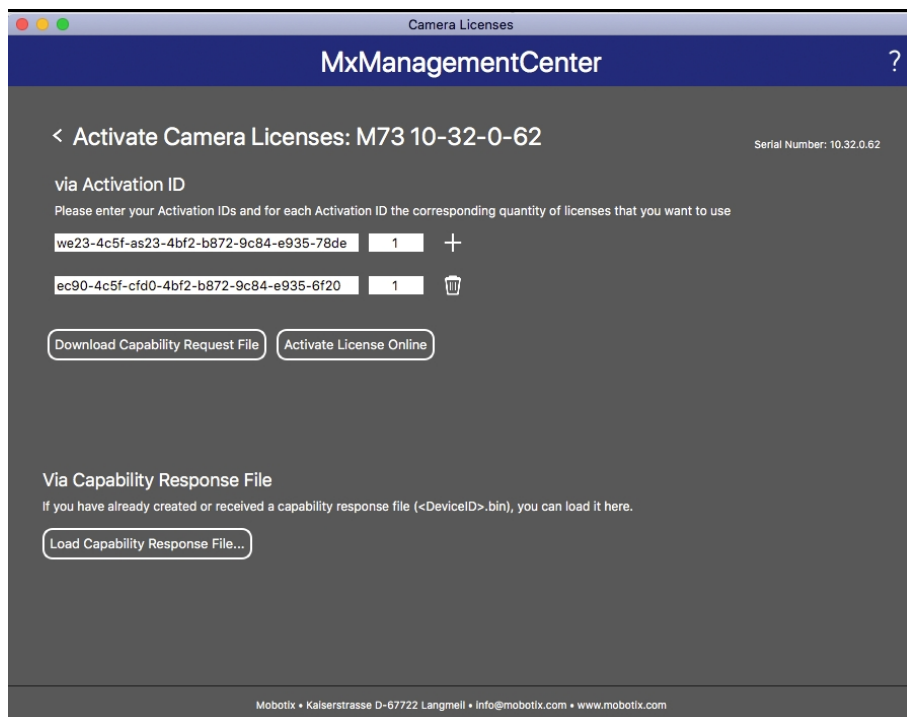


Fig. 3: Overview of the licenses installed on the camera

**NOTE!** If necessary, correct the time set on the camera.

2. Enter a valid Activation ID and specify the number of licenses to install on this computer.
3. If you want to license another product, click on . In the new row, enter the appropriate Activation ID and the number of licenses you want.
4. To remove a line click .
5. When you have entered all Activation IDs, click **Activate License Online**. During activation, **MxMC** connects to the license server. This requires an Internet connection.



**Fig. 4: Adding licenses**

#### Successful activation

After successful activation, a new log in is required to apply the changes. Alternatively, you can return to license management.

#### Failed activation (missing internet connection)

If the license server cannot be reached, e.g. due to a missing internet connection, apps can also be activated offline. (see [Offline Activation](#), p. 12).

## Offline Activation

For offline activation, the partner/installer from whom you purchased the licenses can generate a capability response (.bin file) on the license server to activate their licenses.

1. Select from the menu **Window > Camera App Licenses**.
2. Select the camera on which you want to license apps and click **Select**.

Name	Url	Serial Number
mx10-10-38-40	10.10.38.40	10.10.38.40
mx10-22-10-30	10.22.10.30	10.22.10.30
M73 10-32-0-62	10.32.0.62	10.32.0.62

Fig. 5: Overview of Camera App Licenses in MxManagementCenter

**NOTE!** If necessary, correct the time set on the camera.

3. An overview of the licenses installed on the camera may be displayed. Click **Activate License**.

Name	Expiration	Quantity
MxWheelDetector	Permanent	Unlimited
iot_plugin_a	Permanent	Unlimited
iot_plugin_b	Permanent	Unlimited
iot_plugin_c	Permanent	Unlimited
iot_plugin_d	Permanent	Unlimited
iot_plugin_e	Permanent	Unlimited
iot_plugin_f	Permanent	Unlimited
iot_plugin_g	Permanent	Unlimited
iot_plugin_h	Permanent	Unlimited
iot_plugin_i	Permanent	Unlimited

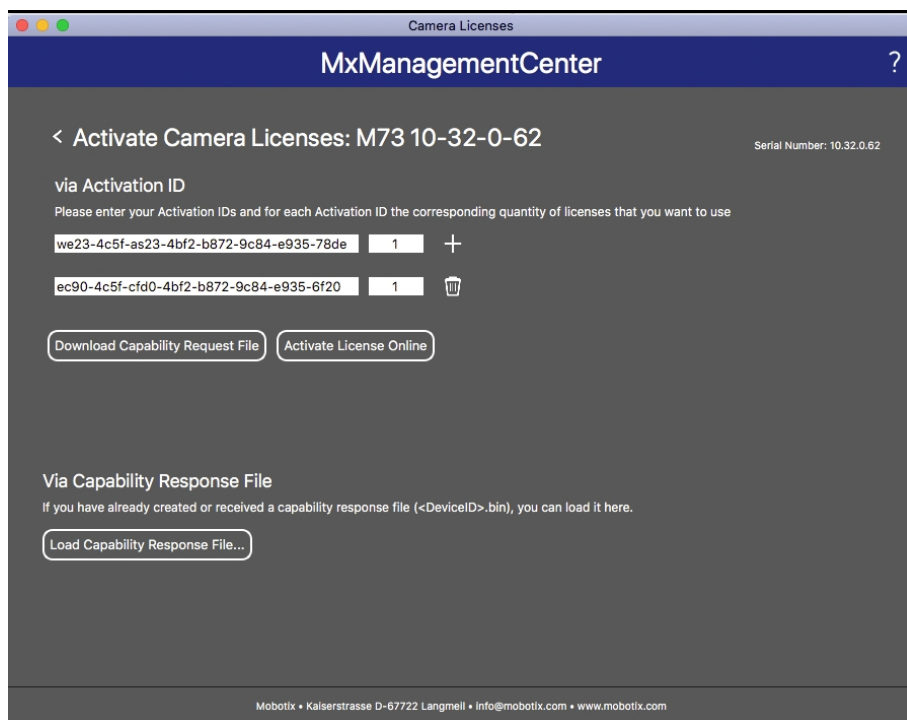
Fig. 6: Overview of the licenses installed on the camera

**NOTE!** If necessary, correct the time set on the camera.

4. Enter a valid Activation ID and specify the number of licenses to install on this computer.
5. If you want to license another product, click on . In the new row, enter the appropriate **Activation ID** and the number of licenses you want.
6. If necessary, click to remove a line.

- When you have entered all Activation IDs, click **Download Capability Request File (.lic)**, and send it to your partner/installer.

**NOTE!** This file allows the partner / installer from whom you purchased the licenses to generate a capability response file (.bin ) on the license server.



**Fig. 7: Adding licenses**

- Click Load Capability Response File and follow the instructions.

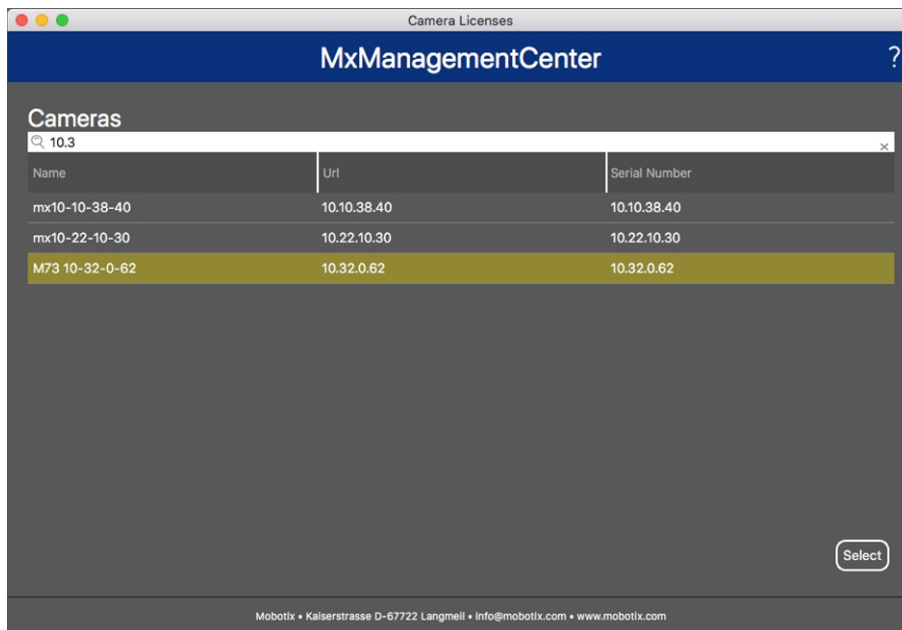
### Successful activation

After successful activation, a new log in is required to apply the changes. Alternatively, you can return to license management.

## Managing Licenses in MxManagementCenter

In MxManagementCenter you can comfortably manage all licenses that have been activated for a camera.

- Select from the menu **Window > Camera App Licenses**.
- Select the camera on which you want to license apps and click **Select**.



**Fig. 8: Overview of Camera App Licenses in MxManagementCenter**

An overview of the licenses installed on the camera may be displayed.



**Fig. 9: Overview of the licenses installed on the camera**

### NOTE!

If necessary, correct the time set on the camera.

Column	Explanation
Name	Name of the licensed app
Expiration	the time limit of the license
Quantity	Number of licenses purchased for a product.
Serial Number	Unique identification determined by MxMC for the device used. If problems occur during licensing, please have the device ID ready.

#### Synchronize licenses with server

When the program starts, there is no automatic comparison of the licenses between the computer and the license server. Therefore, click **Update** to reload the licenses from the server.

#### Update licenses

To update temporary licenses, click **Activate Licenses**. The dialog for updating/activating licenses opens.

#### NOTE!

You need administrator rights to synchronize and update licenses.



# Activation of the Certified App Interface

## CAUTION!

The Visage Technologies Face Recognition App does not consider obscure areas defined for the live image. Therefore there is no pixelation in obscure areas while configuring the app and during image analysis by the app.

## NOTE!

The user must have access to the setup menu ([http\(s\)://<Camera IP address>/control](http(s)://<Camera IP address>/control)). Therefore check the user rights of the camera.

## Activation of Certified Apps and events

1. In the camera web interface, open: **Setup Menu / Certified App Settings** ([http\(s\)://<Camera IP address>/control/app\\_config](http(s)://<Camera IP address>/control/app_config)).

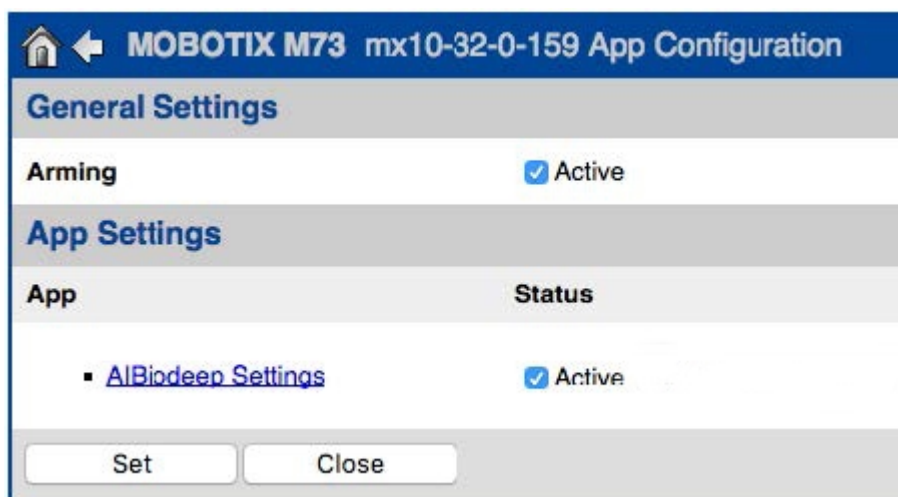


Fig. 10: Certified App: Settings

2. Under **General Settings** activate the **Arming** of the MOBOTIX interface (see screenshot).
3. Under **App Settings** check the **Active** option
4. Click on the name of the App to be configured to open the Apps user interface.
5. For configuration of the App see [Configuration of Visage Technologies Face Recognition App, p. 18](#).

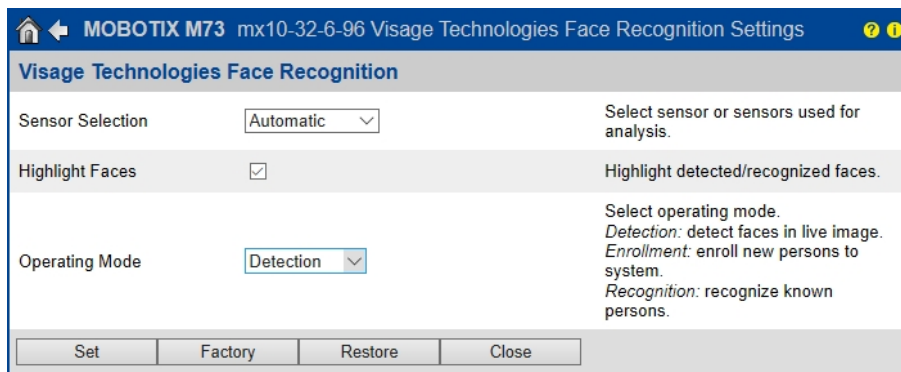
# Configuration of Visage Technologies Face Recognition App

## CAUTION!

The user must have access to the setup menu ([http\(s\)://<Camera IP address>/control](http(s)://<Camera IP address>/control)). Therefore check the user rights of the camera.

1. In the camera web interface, open: **Setup Menu / Certified App Settings** ([http\(s\)://<Camera IP address>/control/app\\_config](http(s)://<Camera IP address>/control/app_config)).
2. Click on the name of the **Visage Technologies Face Recognition App**.

The configuration window of the app appears with the following options:



Visage Technologies Face Recognition		
Sensor Selection	Automatic	Select sensor or sensors used for analysis.
Highlight Faces	<input checked="" type="checkbox"/>	Highlight detected/recognized faces.
Operating Mode	Detection	Select operating mode. <i>Detection:</i> detect faces in live image. <i>Enrollment:</i> enroll new persons to system. <i>Recognition:</i> recognize known persons.
<div>Set Factory Restore Close</div>		

Fig. 11: Default operating mode: Detection

**Sensor Selection:** Select the sensors to be used for image analysis

**Highlight Faces:** Check to highlight detected or recognized faces with a bounding box

**Operating Mode:** Select one of the operating modes:

## Detection (default)

In operation mode **Detection** faces in the live image are detected. There are no further configuration options available.

## Enrollment

In the operation mode **Enrollment** persons currently visible in the camera image can be added. Known persons can be edited as well.

In the enrollment mode, the camera extracts a single face from the camera image. If the recognition quality is higher than that of the previously saved face, the app updates this face data. Faces are only extracted if the minimum recognition quality is reached.

**MOBOTIX M73 mx10-32-6-96 Visage Technologies Face Recognition Settings**

**Visage Technologies Face Recognition**

Sensor Selection	Automatic	Select sensor or sensors used for analysis.
Highlight Faces	<input checked="" type="checkbox"/>	Highlight detected/recognized faces.
Operating Mode	Enrollment	Select operating mode. <i>Detection</i> : detect faces in live image. <i>Enrollment</i> : enroll new persons to system. <i>Recognition</i> : recognize known persons.
Granted Persons	<div>Name</div> <div>Diego Maradona</div> <div></div>	List of granted persons
Add to granted list	<input type="text"/> <input type="button" value="Add Person"/>	Add currently visible person to 'granted list' with the given name.
Denied Persons	<div>Name</div> <div>Timo Werner</div> <div></div>	List of denied persons
Add to denied list	<input type="text"/> <input type="button" value="Add Person"/>	Add currently visible person to 'denied list' with the given name.
<input type="button" value="Set"/> <input type="button" value="Factory"/> <input type="button" value="Restore"/> <input type="button" value="Close"/>		

**Fig. 12: Operating mode: Enrollment**

**Granted Persons:** Persons added to the list of granted persons, their names can be edited or deleted.

**Add to granted list:** If a new person is detected they are highlighted in the camera image with a recognition quality level. Then you can give them an unique name and add them to the list of granted persons.

**Denied Persons:** Persons added to the list of denied persons, their names can be edited or deleted.

**Add to denied list:** If a new person is detected they are highlighted in the camera image with a recognition quality level. Then you can give them an unique name and add them to the list of denied persons.

## Recognition

Known persons are recognized and highlighted in the camera image.

**MOBOTIX M73 mx10-32-6-96 Visage Technologies Face Recognition Settings**

**Visage Technologies Face Recognition**

Sensor Selection	Automatic	Select sensor or sensors used for analysis.
Highlight Faces	<input checked="" type="checkbox"/>	Highlight detected/recognized faces.
Operating Mode	Recognition	Select operating mode. <i>Detection</i> : detect faces in live image. <i>Enrollment</i> : enroll new persons to system. <i>Recognition</i> : recognize known persons.
Confidence Threshold	High	Set confidence threshold for face recognition.
Show Name	<input checked="" type="checkbox"/>	Show name of successfully recognized person in live image.
<input type="button" value="Set"/> <input type="button" value="Factory"/> <input type="button" value="Restore"/> <input type="button" value="Close"/>		

**Fig. 13: Operating mode: Recognition**

**Confidence Threshold:** The **Confidence Threshold** represents a similarity threshold used for the face recognition. The higher the threshold is set, the more difficult it is to be recognized. On the other hand, a lower threshold reduces the reliability of the recognition.

**Show Name:** Show the name of successfully recognized persons in the live image.

## Storing the Configuration

To store the configuration you have the following options:

- Click on the **Set** button to activate your settings and to save them until the next reboot of the camera.
- Click on the **Factory** button to load the factory defaults for this dialog (this button may not be present in all dialogs).
- Click on the **Restore** button to undo your most recent changes that have not been stored in the camera permanently.
- Click on the **Close** button to close the dialog. While closing the dialog, the system checks the entire configuration for changes. If changes are detected, you will be asked if you would like to store the entire configuration permanently.

After successfully saving the configuration, the event and meta data are automatically sent to the camera in case of an event.

# MxMessageSystem

## What is MxMessageSystem?

MxMessageSystem is a communication system based on name oriented messages. This means that a message must have a unique name with a maximum length of 32 bytes.

Each participant can send and receive messages. MOBOTIX cameras can also forward messages within the local network. This way, MxMessages can be distributed over the entire local network (see Message Area: Global).

For example, a MOBOTIX 7 series camera can exchange an MxMessage generated by a camera app with an Mx6 camera that does not support certified MOBOTIX apps.

## Facts about MxMessages

- 128-bit encryption ensures privacy and security of message content.
- MxMessages can be distributed from any camera of the Mx6 and 7 series.
- The message range can be defined individually for each MxMessage.
  - **Local:** Camera expects an MxMessage within its own camera system (e.g. through a Certified App).
  - **Global:** the camera expects an MxMessage that is distributed in the local network by another MxMessage device (e.g. another camera of the 7 series equipped with a certified MOBOTIX app).
- Actions that the recipients are to perform are configured individually for each participant of the MxMessageSystem.

# Basic configuration: Processing the automatically generated app events

## Checking automatically generated app events

**NOTE!** After successfully activating the app (see [Activation of the Certified App Interface, p. 17](#)), a generic message event for this specific app is automatically generated in the camera.

- To check the event go to **Setup-Menu / Event Control / Event Overview**.
- The automatically generated message event profile is named after the application (e. g. VT\_Face).

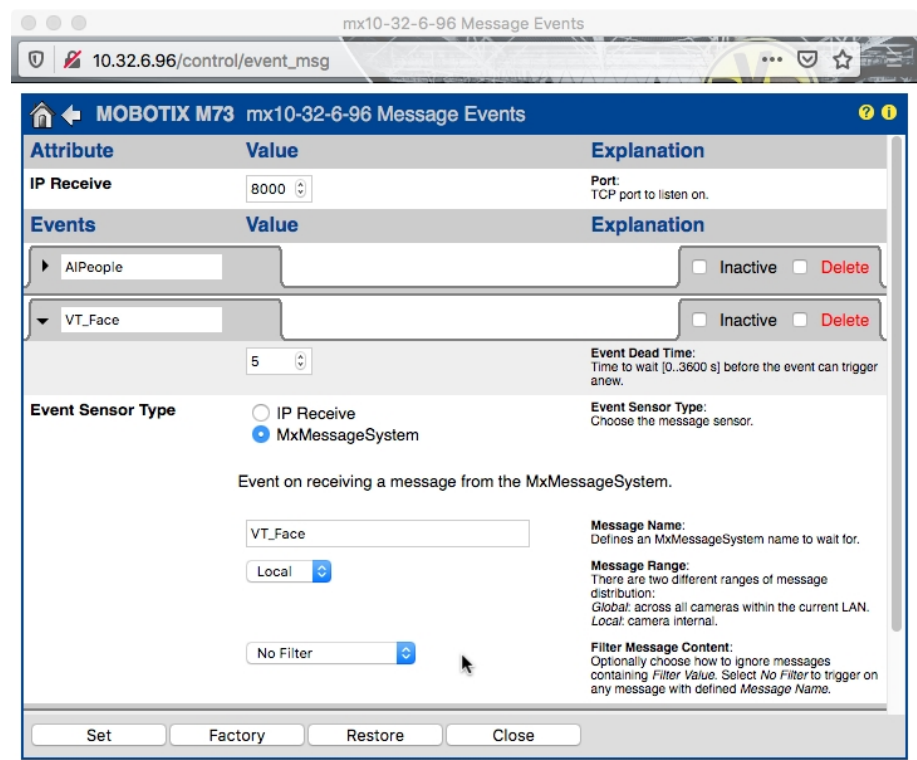


Fig. 14: Example: Generic message event from Visage Technologies Face Recognition App

## Action handling - Configuration of an action group

**CAUTION!** To use events, trigger action groups or record images the general arming of the camera must be enabled ([http\(s\)/<Camera IP address>/control/settings](http(s)/<Camera IP address>/control/settings))

An action group defines which action(s) is (are) triggered by the Visage Technologies Face Recognition App event.

1. In the camera web interface, open: **Setup Menu / Action Group Overview** ([http\(s\)://<Camera IP address>/control/actions](http(s)://<Camera IP address>/control/actions)).

Name	Arming	Events & Actions	Edit
VisualAlarm <input type="checkbox"/> Delete	Off (No time table)	(select all) VA	Edit...
AI Action <input type="checkbox"/> Delete	Enabled (No time table)	MSG -	Edit...
VT Action <input type="checkbox"/> Delete	Enabled (No time table)	-	Edit...

Add new group

Fig. 15: Defining Action Groups

- Click **Add new group** and give a meaningful name.
- Click **Edit**, to configure the group.

General Settings	Value	Explanation
Action Group	VT Action Enabled (No time table)	<b>Name:</b> The name is purely informational.  <b>Arming:</b> Controls this action group. <i>Enabled:</i> activate the group. <i>Off:</i> deactivate the group. <i>SI:</i> group armed by signal input. <i>CS:</i> group armed by custom signal as defined in <a href="#">General Event Settings</a> .  <b>Time Table:</b> Time table for this action profile ( <a href="#">Time Tables</a> ).
Event Selection	Image Analysis: vfwz Message: AI_People Message: VT_Face (Signal: SI) Signal: Signal: UC	<b>Event Selection:</b> Select the events which will trigger the actions below. Use [Ctrl]-Click to select more than one event. Events in parentheses need to be <i>activated</i> first.
Action Details	5 Simultaneously	<b>Action Deadtime:</b> Time to wait [0..3600 s] before a new action can take place.  <b>Action Chaining:</b> Choose how the status of each subaction influences the execution of all others. <i>Simultaneously:</i> All actions are executed simultaneously.

Fig. 16: Configuring an Action Group

1. Activate **Arming** of the Action Group.
2. Select your message event in the **Event selection** list. To select multiple events, press the shift key.
3. Click **Add new Action**
4. Select a proper action from list **Action Type and Profile**.

Basic configuration: Processing the automatically generated app events

Facts about MxMessages

Actions

Action 1

☐ Delete

IP Notify: HttpRequest

✓ Play Sound: StandardSounds

Visual Alarm: Red Frame

Image Profile: Ultra HD

Image Profile: QXGA

Image Profile: FullHD

Image Profile: MEGA

Play Sound: StandardSounds

0

Add new action

Explanation

Action Type and Profile:  
Select the Action Profile to be executed.

Action Timeout or Duration:  
If this action runs longer than the time specified [0..3600 s], it is aborted and returns an error; 0 to deactivate.  
For Image Profile action, this is the duration and no error returns.

Fig. 17: Select Action Type- and Profile

**NOTE!** If the required action profile is not yet available, you can create a new profile in the Admin Menu sections "MxMessageSystem", "Transfer Profiles" and "Audio and VoIP Telephony".

**NOTE!** If necessary, you can add further actions by clicking the button again. In this case, please make sure that the "action chaining" is configured correctly (e.g. at the same time).

5. Click on the **Set** button at the end of the dialog box to confirm the settings.

Action settings - Configuration of the camera recordings

1. In the camera web interface, open: **Setup Menu / Event Control / Recording**(http(s)/<Camera IP address>/control/recording).

Storage Settings

Value

Explanation

Recording (REC)

Event Recording

Snap Shot Recording

✓ Event Recording

Continuous Recording

Recording Mode:  
Type of event and story recording.  
Snap Shot Recording: stores single JPEG pictures.  
Event Recording: stores stream files for every event using MxPEG codec.  
Continuous Recording: continuously streams video data to stream files using MxPEG codec. Events can be recorded with a higher frame rate using Start Recording, Retrigger Recording and Stop Recording.

Start Recording

Image Analysis: AS  
(Image Analysis: VM)  
(Image Analysis: VM2)  
Message: AlBiodeep  
(Signal: SI)  
Signal: UC

Max fps

0

30 s

Start Recording:  
Select the events which will start recording.  
Use [Ctrl]-Click to select more than one event.  
Events in parentheses need to be activated first.

Event Frame Rate:  
Recording speed if an event is detected, in frames per second.

Recording Time Before Event:  
Additional recording time before an event in seconds.

Recording Time:  
Time to include in recorded stream after an event has occurred.

Fig. 18: Configuration of camera recording settings

2. Activate **Arm Recording**.
3. Under **Storage Settings / Recording (REC)** select a **Recording mode**. The following modes are available:
- Snap Shot Recording
  - Event Recording
  - Continuous Recording



4. In list **Start recording** select the message event just created.
5. Click on the **Set** button at the end of the dialog box to confirm the settings.
6. Click on **Close** to save your settings permanently.

**NOTE!** Alternatively, you can save your settings in the Admin menu under Configuration / Save current configuration to permanent memory.

# Advanced Configuration: Processing the meta data transmitted by apps

## Meta data transferred within the MxMessageSystem

For each event, the app also transfers meta data to the camera. This data is sent in the form of a JSON schema within an MxMessage.



Fig. 19: Example: Meta data transmitted within an MxMessage of the Visage Technologies Face Recognition App

### NOTE!

To view the meta data structure of the last App event, enter the following URL in the address bar of your browser: [http\(s\)/IPAdresseOfYourCamera/api/json/messages](http(s)/IPAdresseOfYourCamera/api/json/messages)

# Creating a Custom Message Event

1. In the camera web interface, open: **Setup Menu / Event Control / Event Overview**  
([http\(s\)://<Camera IP address>/control/event\\_msg](http(s)://<Camera IP address>/control/event_msg))

The screenshot shows the 'MOBOTIX S74 mx10-32-24-156 Message Events' configuration page. It features a table with columns 'Attribute', 'Value', and 'Explanation'. The table lists 'IP Receive' with a value of '8000' and 'Port: TCP port to listen on.'. Below this is an 'Events' section with a table listing 'MxAnalytics' and 'VT\_Face'. The 'VT\_Face' event is selected, and its configuration is shown in a detailed form. The form includes fields for 'Event Dead Time' (5), 'Event Sensor Type' (MxMessageSystem), 'Message Name' (VT\_Face), 'Message Range' (Local), 'Filter Message Content' (Regular Expression), and 'Filter Value' (\*Diego Maradona\*). The 'Filter Value' field is a text area containing the regular expression. At the bottom of the form is an 'Add new profile' button. The bottom of the page has buttons for 'Set', 'Factory', 'Restore', and 'Close'.

Fig. 20: Configuration of a user-defined event

2. Configure the parameters of the event profile as follows:
  - **Profile Name:** Enter an event related / application related profile name that illustrates the purpose of the profile.
  - **Message Name:** Enter the "Message Name" according to the event documentation of the corresponding app (see [Examples for message names and filter values of the Visage Technologies Face Recognition App](#), p. 28)
  - **Message Range:**
    - Local: Default settings for the Visage Technologies Face Recognition App
    - Global: (MxMessage is forwarded from another MOBOTIX camera in the local network.

- **Filter Message Content:**
  - Generic Event: “No Filter”
  - Filtered Event: “JSON Equal Compare”

**Filter Value:** see [Examples for message names and filter values of the Visage Technologies Face Recognition App](#), p. 28.

**CAUTION!**

“Filter Value“ is used to differentiate the MxMessages of an app / bundle. Use this entry to benefit from individual event types of the apps (if available).

Choose “No Filter” if you want to use all incoming MxMessages as generic event of the related app.

2. Click on the **Set** button at the end of the dialog box to confirm the settings.

# Examples for message names and filter values of the Visage Technologies Face Recognition App

	MxMessage Name	Filter Value
Generic Event	VT_Face	“recognizedPersons”



EN\_10/21

MOBOTIX AG • Kaiserstrasse • D-67722 Langmeil • Tel.: +49 6302 9816-103 • sales@mobotix.com • www.mobotix.com

MOBOTIX is a trademark of MOBOTIX AG registered in the European Union, the U.S.A., and in other countries. Subject to change without notice. MOBOTIX do not assume any liability for technical or editorial errors or omissions contained herein. All rights reserved. © MOBOTIX AG 2020