

Guideline

MOBOTIX MxAnalytics AI App

© 2022 MOBOTIX AG



Table of Contents

Table of Contents	2
Before You Start	3
Support	4
Legal Notes	4
About MxAnalytics AI App	6
Smart Data Interface to MxManagementCenter	6
Technical Specifications	8
Licensing Certified Apps	11
License Activation of Certified Apps in MxManagementCenter	11
Managing Licenses in MxManagementCenter	17
Activation of the Certified App Interface	20
Configuration of MxAnalytics AI App	21
MxMessageSystem	30
What is MxMessageSystem?	30
Facts about MxMessages	30
Basic configuration: Processing the automatically generated app events	31
Advanced Configuration: Processing the meta data transmitted by apps	36
Meta data transferred within the MxMessageSystem	36
Creating a Custom Message Event	37
Examples for message names and filter values of the MxAnalytics AI App	38

Before You Start

This section contains the following information:

Support	4
Legal Notes	4

Support

If you need technical support, please contact your MOBOTIX dealer. If your dealer cannot help you, he will contact the support channel to get an answer for you as quickly as possible.

If you have internet access, you can open the MOBOTIX help desk to find additional information and software updates. Please visit:

www.mobotix.com > [Support](#) > [Help Desk](#)



Legal Notes

Special Export Regulations!

Cameras with thermal image sensors ("thermal cameras") are subject to the special export regulations of the U.S.A. and including the ITAR (International Traffic in Arms Regulation):

- According to the currently applicable export regulations of the U.S.A. and the ITAR, cameras with thermal image sensors or parts thereof must not be exported to countries embargoed by the U.S.A., except if a special permit can be presented. At present, this applies to the following countries: Crimea region of Ukraine, Cuba, Iran, North Korea, Sudan, and Syria. The same export ban applies to all persons and institutions listed in "The Denied Persons List" (see www.bis.doc.gov, "Policy Guidance > Lists of Parties of Concern"; <https://www.treasury.gov/resource-center/sanctions/sdn-list/pages/default.aspx>).
- Under no circumstances must the camera itself or its thermal image sensors be used in the design, the development or in the production of nuclear, biological or chemical weapons or in the weapons themselves.

Legal Aspects of Video and Sound Recording

You must comply with all data protection regulations for video and sound monitoring when using MOBOTIX AG products. Depending on national laws and the installation location of the cameras, the recording of video and sound data may be subject to special documentation or it may be prohibited. All users of MOBOTIX

products are therefore required to familiarize themselves with all applicable regulations and to comply with these laws. MOBOTIX AG is not liable for any illegal use of its products.

Declaration of Conformity

The products of MOBOTIX AG are certified according to the applicable regulations of the EC and other countries. You can find the declarations of conformity for the products of MOBOTIX AG on www.mobotix.com under **Support > Download Center > Certificates & Declarations of Conformity**.

RoHS Declaration

The products of MOBOTIX AG are in full compliance with European Unions Restrictions of the Use of Certain Hazardous Substances in Electrical and Electronic Equipment (RoHS Directive 2011/65/EC) as far as they are subject to these regulations (for the RoHS Declaration of MOBOTIX, please see www.mobotix.com, **Support > Download Center > Documentation > Brochures & Guides > Certificates**).

Disposal

Electrical and electronic products contain many valuable materials. For this reason, we recommend that you dispose of MOBOTIX products at the end of their service life in accordance with all legal requirements and regulations (or deposit these products at a municipal collection center). MOBOTIX products must not be disposed of in household waste! If the product contains a battery, please dispose of the battery separately (the corresponding product manuals contain specific directions if the product contains a battery).

Disclaimer

MOBOTIX AG does not assume any responsibility for damages, which are the result of improper use or failure to comply to the manuals or the applicable rules and regulations. Our General Terms and Conditions apply. You can download the current version of the **General Terms and Conditions** from our website at www.mobotix.com by clicking on the corresponding link at the bottom of every page.

FCC Disclaimer

This equipment has been tested and found to comply with the limits for a Class A digital device, pursuant to part 15 of the FCC Rules. These limits are designed to provide reasonable protection against harmful interference when the equipment is operated in a commercial environment. This equipment generates, uses, and can radiate radio frequency energy and, if not installed and used in accordance with the instruction manual, may cause harmful interference to radio communications. Operation of this equipment in a residential area is likely to cause harmful interference in which case the user will be required to correct the interference at his own expense.

About MxAnalytics AI App

Object Recognition Based on Artificial Intelligence

The app's artificial intelligence-based algorithms collect behavioral data on individuals and objects. In a heat map, the most frequented locations in the detection are color-coded. Furthermore movements in defined restricted areas can be detected. Best suited for: Utilities, Energy & Mining; Industry & Production; Government; Traffic & Transportation; Retail; Healthcare; Education & Science

- Free of charge and license-free
- Motion detection in (defined) restricted areas
- Person/object counting based on motion detection (optional: accumulated)
- Creates Heatmaps
- Auto-generated counting and heat map reports
- Can be used with all cameras of the MOBOTIX 7 system platform

Best suited for the requirements of the following industries:

Utilities, Energy & Mining; Industry & Production, Government, Traffic & Transportation, Retail, Healthcare, Education & Science

CAUTION! Thermal sensors are not supported by this app.

Smart Data Interface to MxManagementCenter

This app has a Smart Data interface to MxManagementCenter.

With the MOBOTIX Smart Data System, transaction data can be linked to the video recordings made at the time of the transactions. Smart Data source can be e.g. MOBOTIX Certified Apps (no license required) or general Smart Data sources (license required) like POS systems or license plate recognition systems.

The Smart Data System in MxManagementCenter enables you to quickly find and review any suspicious activities. The Smart Data Bar and the Smart Data View are available for searching and analyzing transactions. The Smart Data Bar provides a direct overview of the most recent transactions (from the last 24 hours) and for this reason it is convenient to use it for reviews and searches.

NOTE! For information on how to use the Smart Data System, see the corresponding online help of the camera software and MxManagementCenter.

Playback - Eisdiele

Search

Eiscafé

Tisch #8 geschloss...
Bon #465
Bediener #2 / 30
2x Cola 0,5 8,00 €
Limonade 0,5 4,00 €
Tafelwasser ... 3,00 €
Spezi 0,5 4,00 €
Bar 19,00 €
Gesamtbetrag 19,00 €
Rechnung #392
Bediener #2 / 30
Tisch #39 geoeffnet
2x Zwiebels... 11,00 €
2x Tomatens... 11,00 €
Cola 0,5 4,00 €
Limonade 0,5 4,00 €
Tafelwasser ... 3,00 €
Tisch #39 geschlos...
Bon #467
Bediener #2 / 30
Tisch #39 geoeffnet
Bar 50,00 €
Rueckgeld 17,00 €
Gesamt... Heute 13:28:55 €
Rechnung #393
Bediener #2
Tisch #8 geoeffnet
Bar 13,60 €
Gesamtbetrag 13,60 €
Rechnung #394
Bediener #2

Biergarten
Kino

Do. 05.10.17 13:28:54

Heute 14:01:23 Eisdiele 6:40 min

05.10.17 13:28:54

Fig. 1: : Smart Data Bar in MxManagementCenter (Example: POS System)

Technical Specifications

Product Information

Product Name	MxAnalytics AI App
Supported MOBOTIX Cameras	Mx-M73A, Mx-S74A
Minimum Camera Firmware	V7.0.6.x
MxManagementCenter Integration	<div><div>■ min. MxMC v2.4</div><div>■ Advanced Config license required</div></div>

Product Features

App Features	<div>Analytics features:</div> <div><div>■ Deep learning object recognition as basis for MxAnalytics features</div><div>■ People / Object Counting</div><div>■ Heatmap</div><div>■ Restricted Area (Motion Detection)</div></div> <div>Other features:</div> <div><div>■ time table to enable MxAnalytics only within defined schedules (e.g. opening hours)</div><div>■ auto-generated people / object counting reports</div><div>■ auto-generated heatmap reports</div><div>■ MOBOTIX events via MxMessageSystem</div></div>
Recognized objects	<div>Persons</div> <div>Vehicles: Car, Truck, Bus, Motorcycle, Bicycle, Boat, Airplane, Train</div> <div>Animals: Bird, Cat, Dog, Horse, Sheep, Cow, Elephant, Bear, Zebra, Giraffe</div>
Maximum number of counting corridors	16
Maximum number of restricted areas	20
Supported image sensor types	Day, Night, Day/Night

Dual / Multi Sensor usage	No
MxMessageSystem supported	Yes
Report export formats	Counting reports: CSV and HTML (table view) Heatmap reports: JPEG
MOBOTIX events	Yes
ONVIF Events	Yes (Generic Message events)

Hardware Requirements

Camera Sensor Connector	Connector 1 (Only one image sensor usable)
-------------------------	--

Scene Requirements for Object Recognition

Recommended camera position	wall mounted
Recommended installation height (camera)	2m - 4m
Recommended viewing angle on object	0° - 30° (wall mount perspective)
Minimum object size	1/10 of image height

Scene Requirements for Object Counting / Heatmapping

Recommended camera position	ceiling mounted (90°), wall mounted (0°)
Recommended installation height (camera)	2,5 - 10 m (depending on lens variant)
Minimum object size	250px

Technical App Specifications

Synchronous / Asynchronous App	Asynchronous
Detection accuracy	Person: > 90% Vehicle: > 80%

Technical Specifications

Smart Data Interface to MxManagementCenter

Counting accuracy	> 90%
Processed number of frames per second	typ. 5 fps

Licensing Certified Apps

The following licenses are available for the MxAnalytics AI App:

- **30-day test license** pre-installed
- **permanent commercial license**

The usage period begins with activation of the app interface (see [Activation of the Certified App Interface, p. 20](#))

NOTE! For buying or renewing a license, contact your MOBOTIX Partner.

NOTE! Apps are usually pre-installed with the firmware. In rare cases, apps must be downloaded from the website and installed. In this case see www.mobotix.com > **Support** > **Download Center** > **Marketing & Documentation**, download and install the app.

License Activation of Certified Apps in MxManagementCenter

After a test period commercial licenses must be activated for use with a valid license key.

Online-Activation

After receiving the activation IDs, activate them in MxMC as follows:

1. Select from the menu **Window > Camera App Licenses**.
2. Select the camera on which you want to license apps and click **Select**.

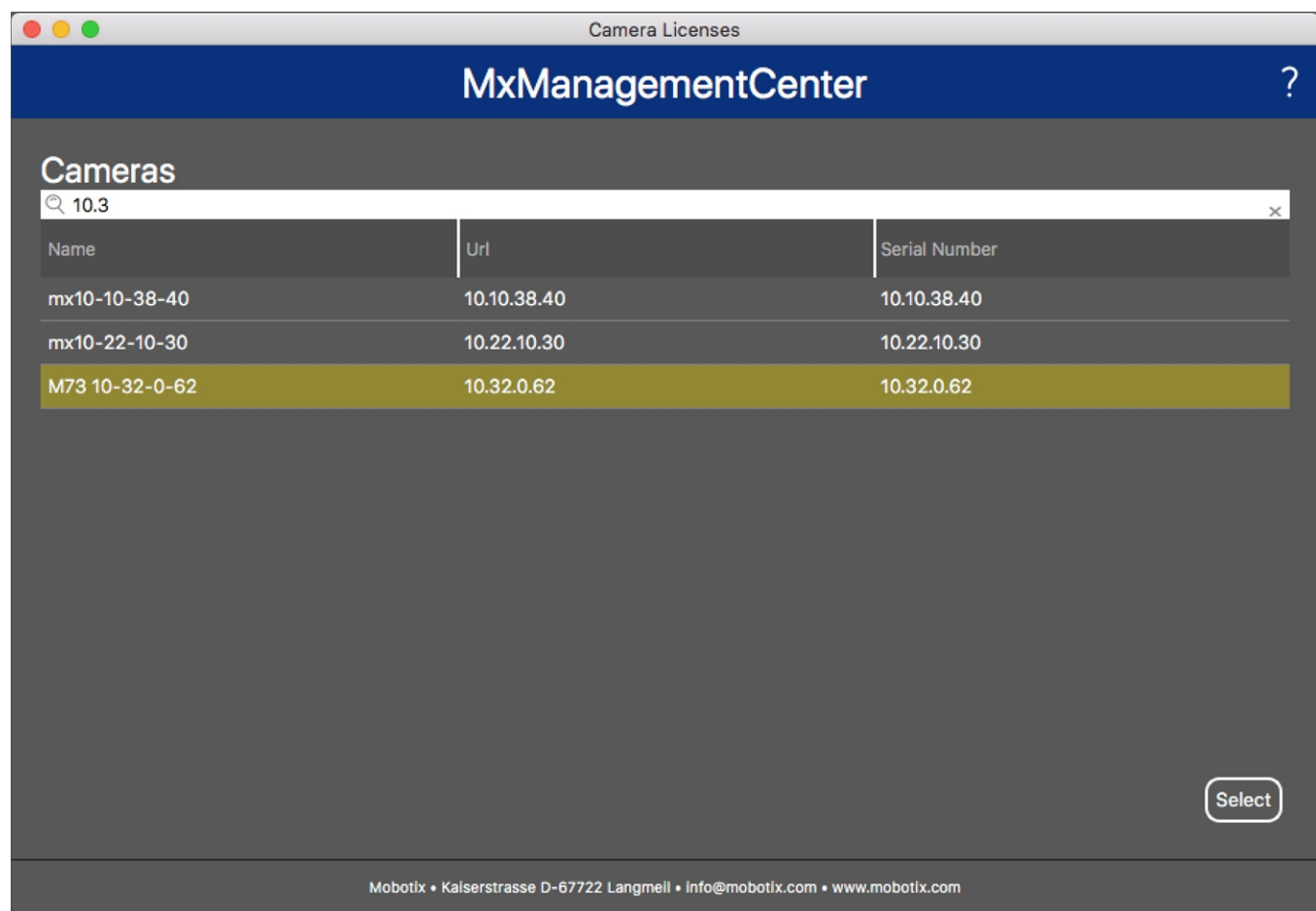


Fig. 2: Overview of Camera App Licenses in MxManagementCenter

NOTE! If necessary, correct the time set on the camera.

1. An overview of the licenses installed on the camera may be displayed. Click **Activate License**.

Name	Expiration	Quantity
MxWheelDetector	Permanent	Unlimited
iot_plugin_a	Permanent	Unlimited
iot_plugin_b	Permanent	Unlimited
iot_plugin_c	Permanent	Unlimited
iot_plugin_d	Permanent	Unlimited
iot_plugin_e	Permanent	Unlimited
iot_plugin_f	Permanent	Unlimited
iot_plugin_g	Permanent	Unlimited
iot_plugin_h	Permanent	Unlimited
iot_plugin_i	Permanent	Unlimited
iot_plugin_j	Permanent	Unlimited

Camera time is incorrect. Please reset your camera time before activating Licenses

Activate License

Mobotix • Kaiserstrasse D-67722 Langmell • info@mobotix.com • www.mobotix.com

Fig. 3: Overview of the licenses installed on the camera

NOTE! If necessary, correct the time set on the camera.

2. Enter a valid Activation ID and specify the number of licenses to install on this computer.
3. If you want to license another product, click on . In the new row, enter the appropriate Activation ID and the number of licenses you want.
4. To remove a line click .
5. When you have entered all Activation IDs, click **Activate License Online**. During activation, **MxMC** connects to the license server. This requires an Internet connection.

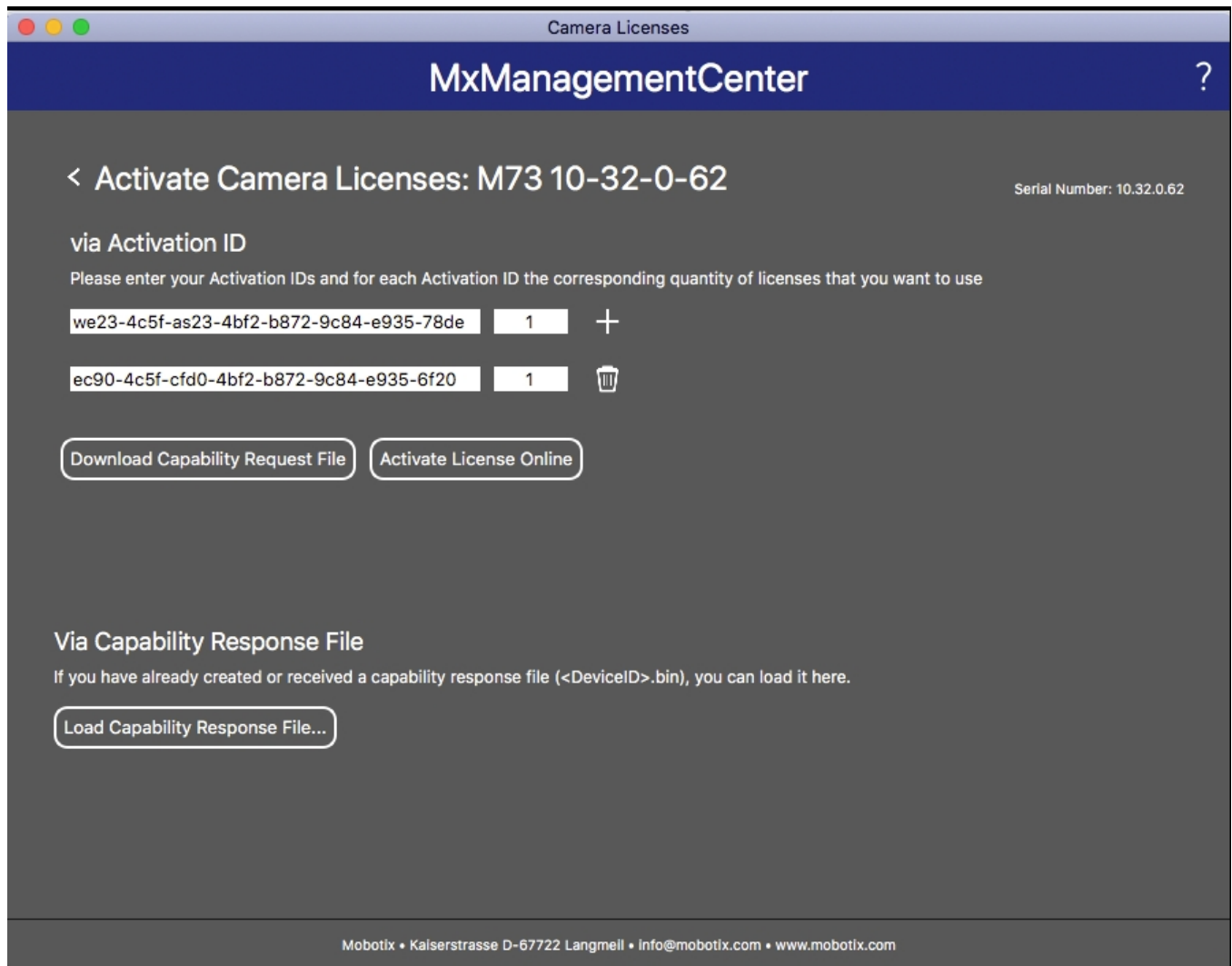


Fig. 4: Adding licenses

Successful activation

After successful activation, a new log in is required to apply the changes. Alternatively, you can return to license management.

Failed activation (missing internet connection)

If the license server cannot be reached, e.g. due to a missing internet connection, apps can also be activated offline. (see [Offline Activation](#), p. 14).

Offline Activation

For offline activation, the partner/installer from whom you purchased the licenses can generate a capability response (.bin file) on the license server to activate their licenses.

1. Select from the menu **Window > Camera App Licenses**.
2. Select the camera on which you want to license apps and click **Select**.

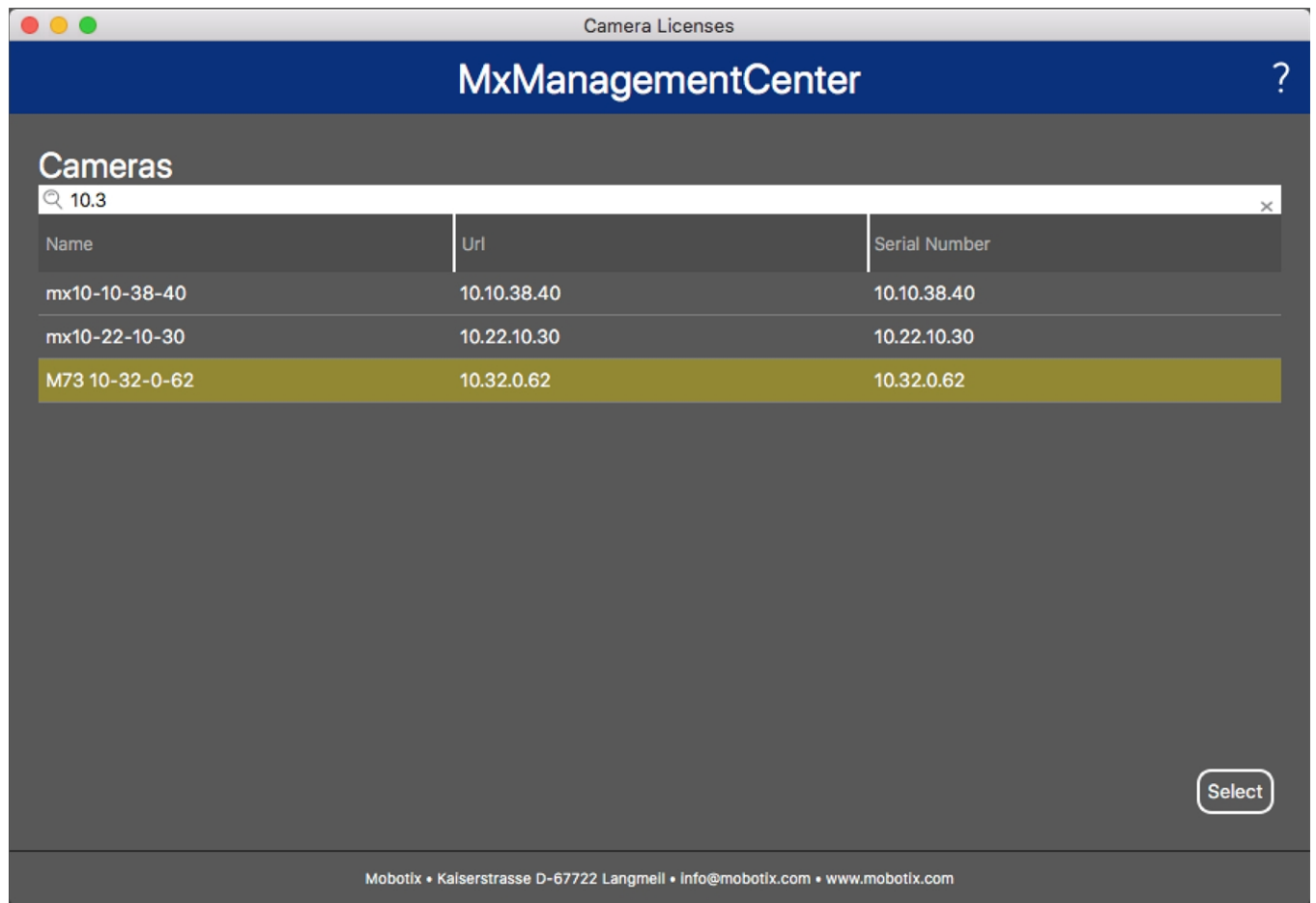


Fig. 5: Overview of Camera App Licenses in MxManagementCenter

NOTE! If necessary, correct the time set on the camera.

3. An overview of the licenses installed on the camera may be displayed. Click **Activate License**.

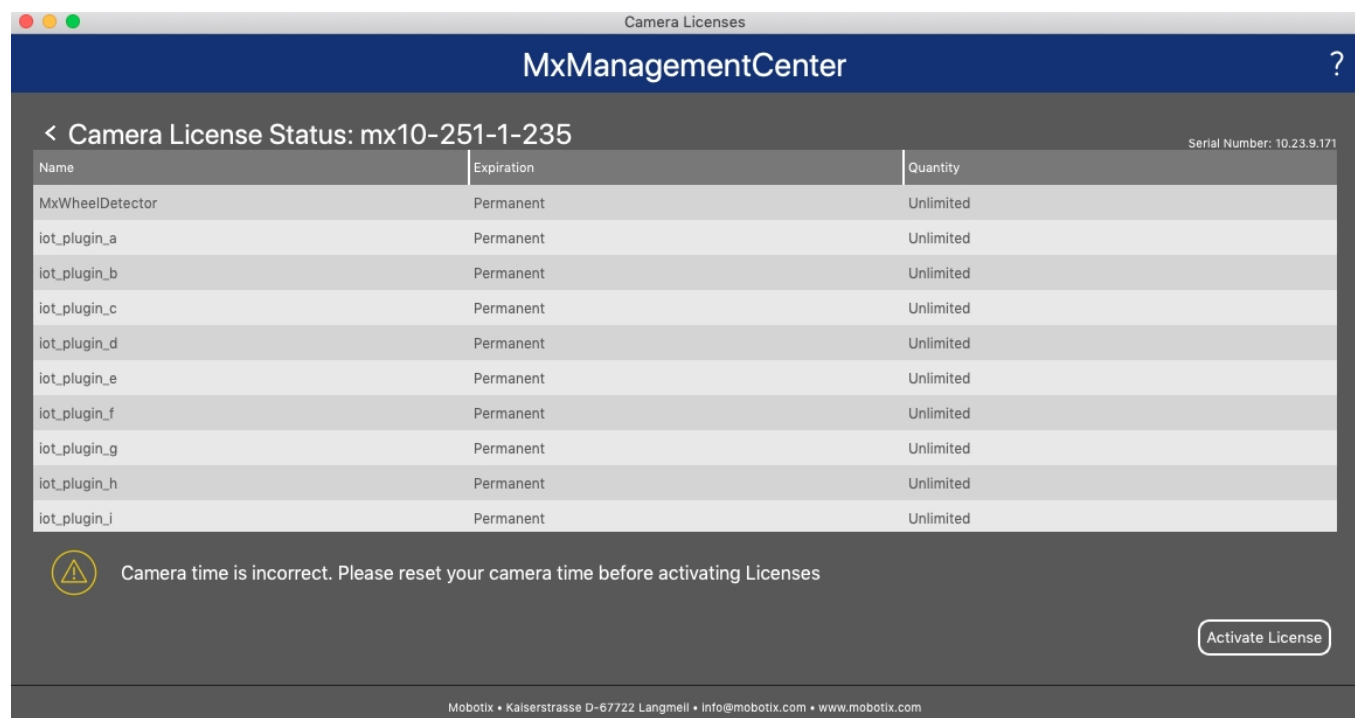


Fig. 6: Overview of the licenses installed on the camera

NOTE! If necessary, correct the time set on the camera.

- 4. Enter a valid Activation ID and specify the number of licenses to install on this computer.
- 5. If you want to license another product, click on . In the new row, enter the appropriate **Activation ID** and the number of licenses you want.
- 6. If necessary, click | to remove a line.
- 7. When you have entered all Activation IDs, click **Download Capability Request File (.lic)**. and send it to your partner/installer.

NOTE! This file allows the partner / installer from whom you purchased the licenses to generate a capability response file (.bin) on the license server.

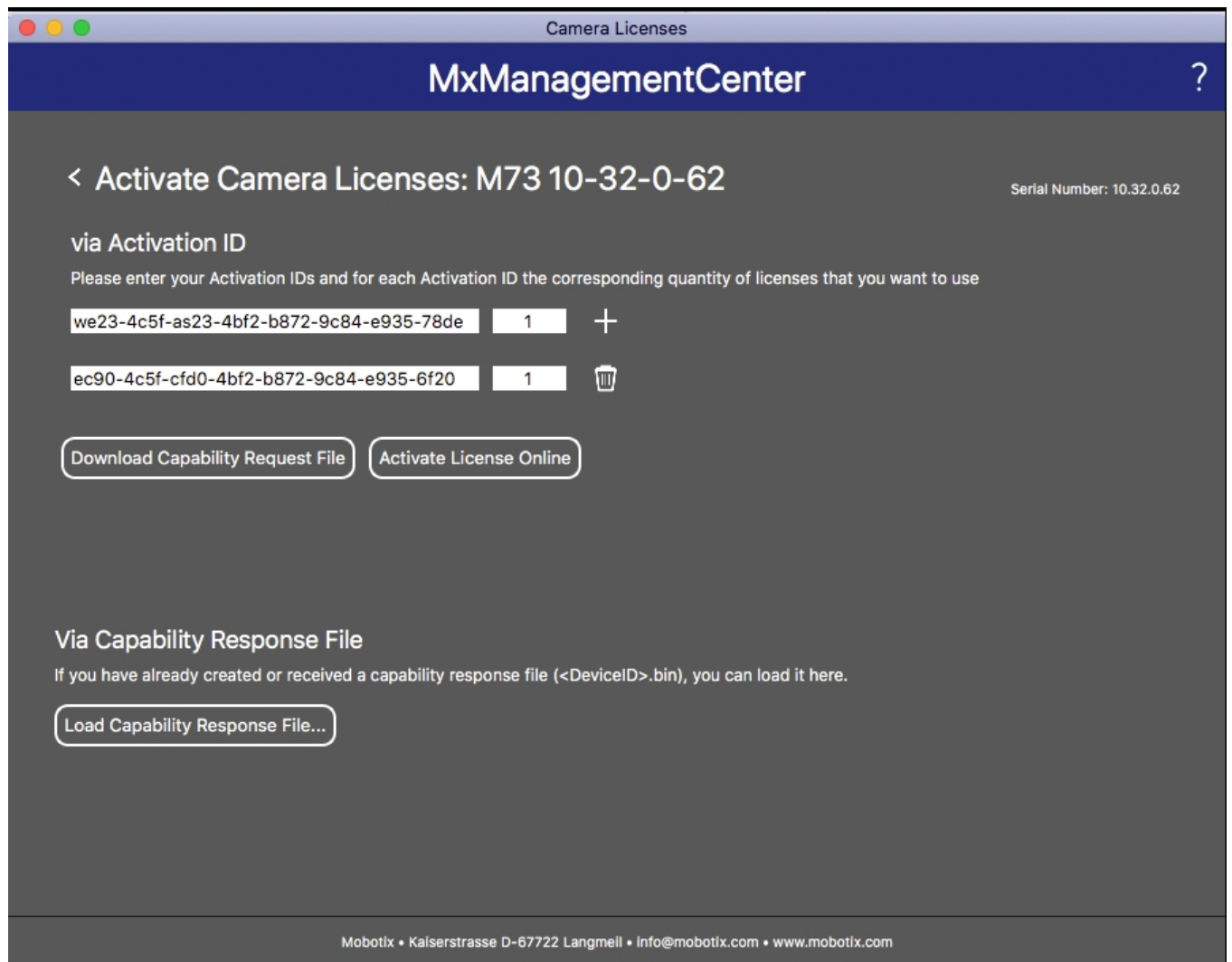


Fig. 7: Adding licenses

8. Click Load Capability Response File and follow the instructions.

Successful activation

After successful activation, a new log in is required to apply the changes. Alternatively, you can return to license management.

Managing Licenses in MxManagementCenter

In MxManagementCenter you can comfortably manage all licenses that have been activated for a camera.

1. Select from the menu **Window > Camera App Licenses**.
2. Select the camera on which you want to license apps and click **Select**.

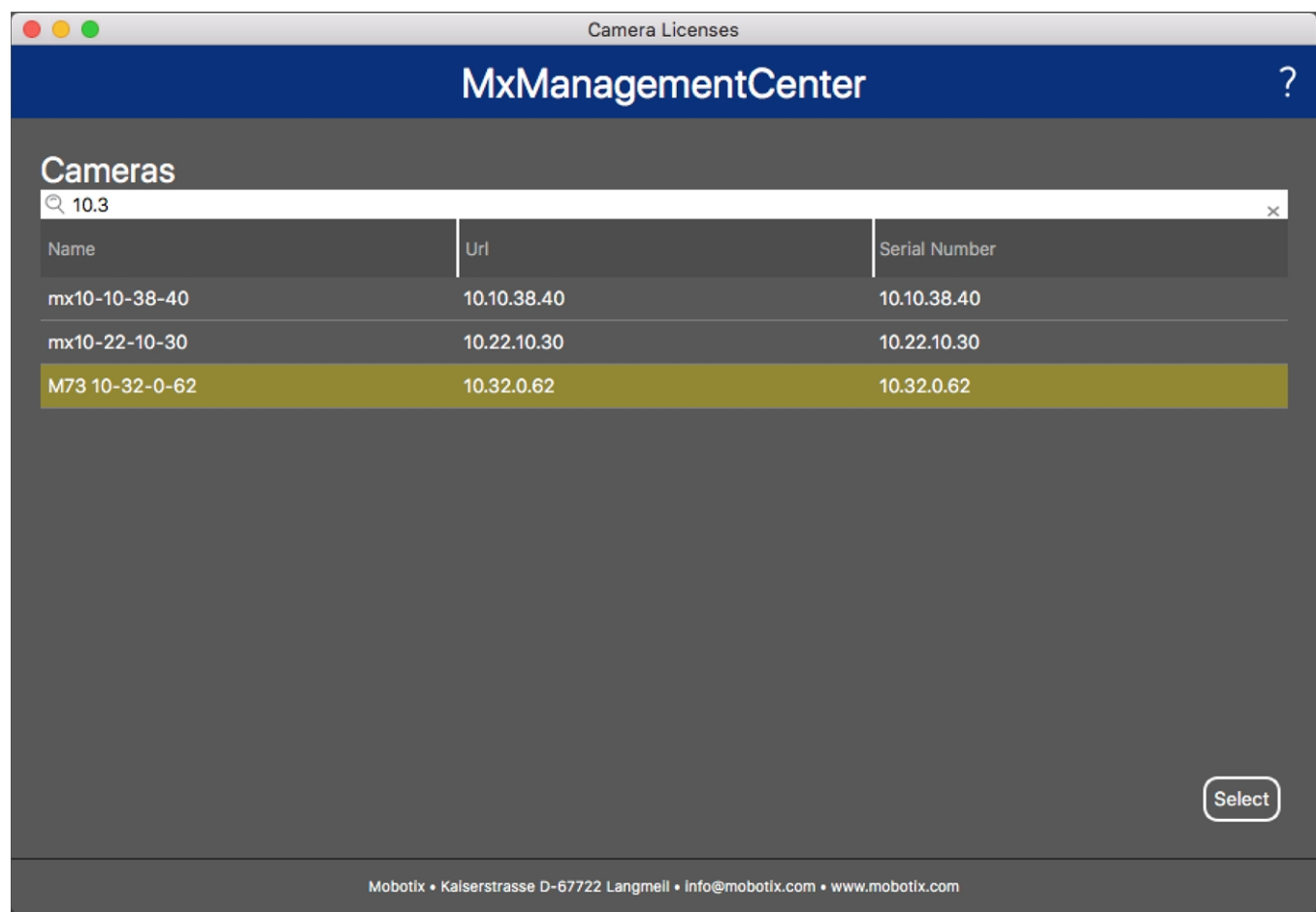


Fig. 8: Overview of Camera App Licenses in MxManagementCenter

An overview of the licenses installed on the camera may be displayed.

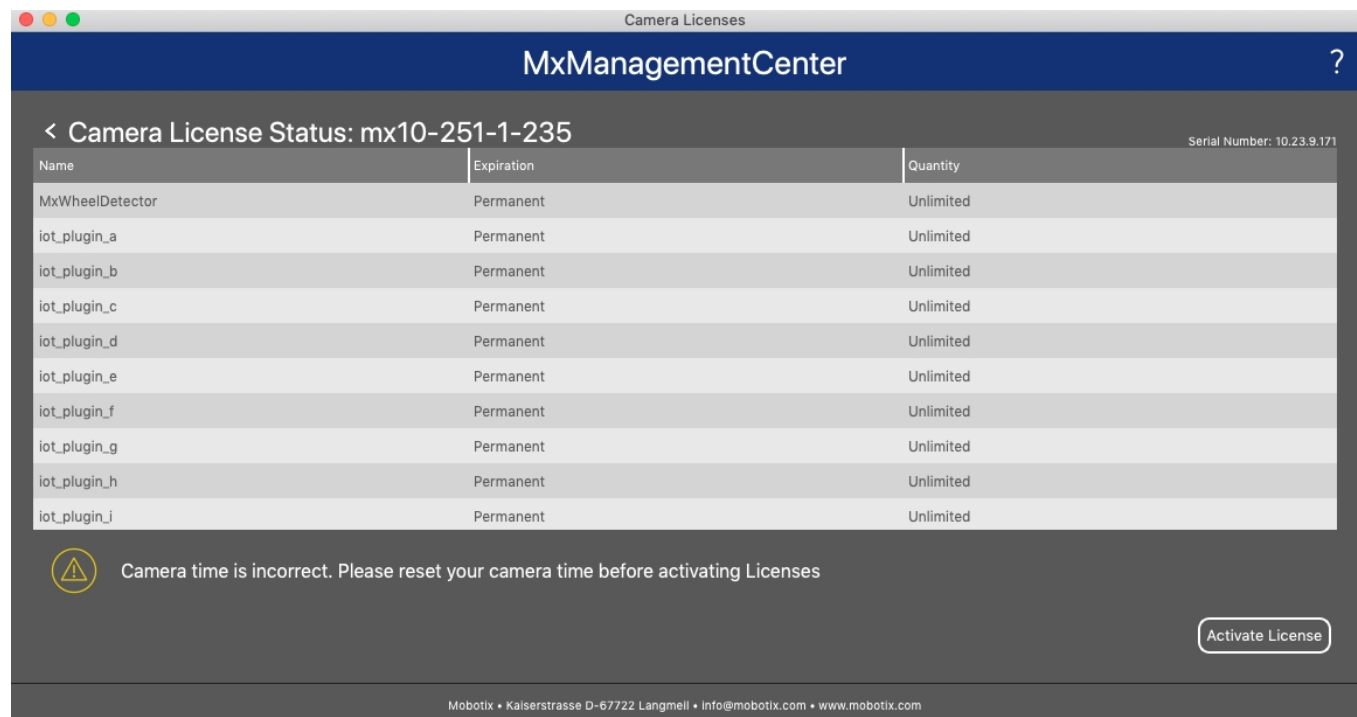


Fig. 9: Overview of the licenses installed on the camera

NOTE!

If necessary, correct the time set on the camera.

Column	Explanation
Name	Name of the licensed app
Expiration	the time limit of the license
Quantity	Number of licenses purchased for a product.
Serial Number	Unique identification determined by MxMC for the device used. If problems occur during licensing, please have the device ID ready.

Synchronize licenses with server

When the program starts, there is no automatic comparison of the licenses between the computer and the license server. Therefore, click **Update** to reload the licenses from the server.

Update licenses

To update temporary licenses, click **Activate Licenses**. The dialog for updating/activating licenses opens.

NOTE!

You need administrator rights to synchronize and update licenses.

Activation of the Certified App Interface

CAUTION!

The MxAnalytics AI App does not consider obscure areas defined for the live image. Therefore there is no pixelation in obscure areas while configuring the app and during image analysis by the app.

NOTE!

The user must have access to the setup menu ([http\(s\)://<Camera IP address>/control](http(s)://<Camera IP address>/control)). Therefore check the user rights of the camera.

Activation of Certified Apps and events

1. In the camera web interface, open: **Setup Menu / Certified App Settings** ([http\(s\)://<Camera IP address>/control/app_config](http(s)://<Camera IP address>/control/app_config)).

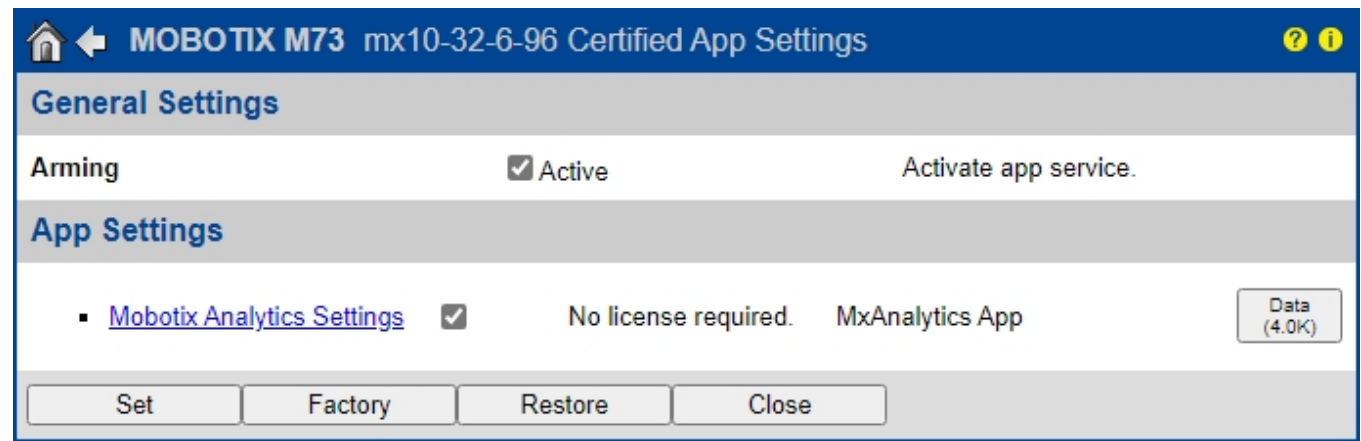


Fig. 10: Certified App: Settings

2. Under **General Settings** activate the **Arming** of the MOBOTIX interface (see screenshot).
3. Under **App Settings** check the **Active** option
4. Click on the name of the App to be configured to open the Apps user interface.
5. For configuration of the App see [Configuration of MxAnalytics AI App, p. 21](#).

Configuration of MxAnalytics AI App

CAUTION!

The user must have access to the setup menu ([http\(s\)://<Camera IP address>/control](http(s)://<Camera IP address>/control)). Therefore check the user rights of the camera.

1. In the camera web interface, open: **Setup Menu / Certified App Settings** ([http\(s\)://<Camera IP address>/control/app_config](http(s)://<Camera IP address>/control/app_config)).
2. Click on the name of the **MxAnalytics AI App**.

The configuration window of the app appears with the following options:

Basic settings

MOBOTIX M73 mx10-32-6-96 Mobotix Analytics Settings

Mobotix Analytics

Active: Automatic Set for which sensors MxAnalytics is supposed to be executed.

Low-Light-Suppression: 10 Lux The minimum Lux-value for Analytics to execute

Detection Area

Sensor Selection: Automatic

Polygon points

0	x	0	<input type="button" value="Set Point"/>
0	x	960	<input type="button" value="Set Point"/>
1280	x	960	<input type="button" value="Set Point"/>
1280	x	0	<input type="button" value="Set Point"/>

Inverted Area ☐

Define multiple detection areas as polygon. Corners can also be defined by holding the shift key and clicking into the live image and then pressing the 'Set Point' button.

Installation Settings

Visualization Settings

Event Settings

Heatmap Settings

Storage Settings

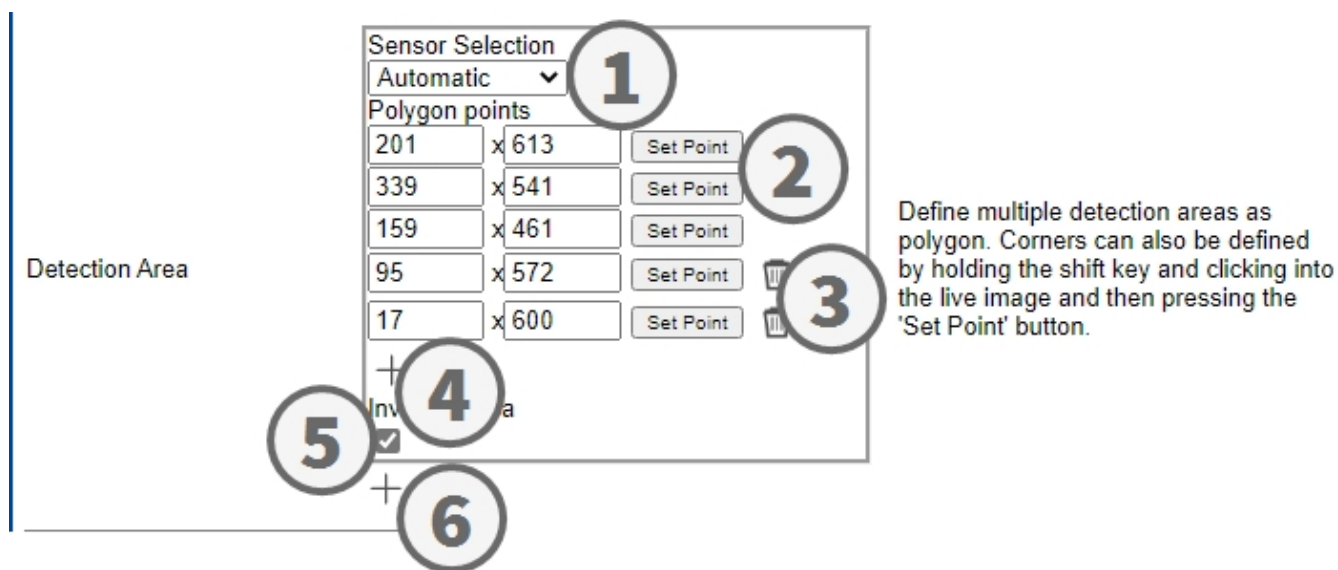
Fig. 11: Basic settings

Active: Select the sensors to be used by the MxAnalytics AI App.

Low-Light -Supression: Select the minimum lux value for MxAnalytics AI App to execute.

Detection Area: You can define multiple detection areas as polygon by defining the corner points. Corners can also be defined by holding the shift key and clicking into the live image and then pressing the **Set Point** button.

Drawing a Detection Area



1. Select the sensors to be used for the detection area ① .
2. In the live view hold the **Shift** key and click a corner point of the detection area.
3. In the configuration interface click **Set Point** ② to adopt the coordinates of the corner point.
4. Repeat steps 2 and 3 to define the next corner points.
5. Optionally click the **bin icon** ③ to delete a zone.
6. Optionally click the **plus icon** ④ to define another corner point.
7. Optionally check **Inverted Area icon** ⑤ to delete a zone.
8. Optionally click the **plus icon** ⑥ to define another Detection Area.

Installation settings

For best analytics results camera position as well as the object size need to be specified as accurate as possible.

▼ Installation Settings		
Mounting height	<input type="text" value="250"/>	Mounting height of the camera [150..1000cm]
Mounting angle	<input type="text" value="-90"/>	Tilt angle of the camera in degrees [-90°..90°]. Installation on/in the ceiling corresponds to -90°, installation on/in the wall corresponds to 0°.
Minimum object size	<input type="text" value="2500"/>	Minimum size of objects in pixels [250..250000].
Set minimum object size	<input type="button" value="Set size"/>	Define a rectangle in the live-image with [shift-click] + [click] and press this button to set the minimum object size. Note that the rectangle must be a bit smaller than the object to be recognized.

Fig. 12: Installation settings

Mounting height: Mounting height of the camera (150- 1000cm)

Mounting angle: Tilt angle of the camera in degrees [-90°- 90°]. Installation on/in the ceiling corresponds to -90°, installation on/in the wall corresponds to 0°.

Minimum object size: Minimum size of objects in pixels (250 - 250000)

Set minimum object size: In the live image define a rectangle with [shift-click] + [click] and press this button to set the minimum object size.

Note

the rectangle must be a bit smaller than the object to be recognized.

Visualization Settings

Define how the MxAnalytics AI App objects look in the live image:

Visualization Settings		
Display detection areas	<input checked="" type="checkbox"/>	Whether to show the detection areas in the live-image
Display counting corridors	<input checked="" type="checkbox"/>	Whether to show the counting corridors in the live-image
Display restricted areas	<input checked="" type="checkbox"/>	Whether to show the restricted areas in the live-image
Bounding box color	<input type="text" value="blue"/>	Choose the color of the bounding boxes
Object track color	<input type="text" value="green"/>	Choose the color of the object tracks
Object halo color	<input type="text" value="off"/>	Choose the color of the object halos
Object halo transparency	<input type="text" value="60"/>	The transparency of the object halo in percent

Fig. 13: Visualization settings

- Display detection areas:** Check to show the detection areas in the live image.
- Display counting corridors:** Check to show counting corridors in the live image.
- Display restricted areas:** Check to show restricted areas in the live image.
- Bounding box color:** Select a bounding box color for detected objects.
- Object track color:** Select a color for the tracking path of detected objects.
- Object halo color:** Select a color for the object halos.
- Object halo transparency:** Enter a transparency value in percent for the object halos.

Event settings

Within the detection areas you can define counting corridors and restricted areas.

▼ Event Settings

Counting Corridors

Sensor Selection
Automatic ▼

First Entrance
880 x 400

First Exit
880 x 560

Second Entrance
400 x 400

Second Exit
400 x 560

Corridor ID
1

Counting Label
All ▼

Corridor name

+

List of counting corridors.

Restricted Area

Sensor Selection
Automatic ▼

Polygon points
400 x 300
400 x 660
880 x 660
880 x 300

+

Area ID
1

Area Label
All ▼

+

Define multiple restricted areas as polygon. Corners can also be defined by holding the shift key and clicking into the live image and then pressing the 'Set Point' button.

Fig. 14: Event settings

Adding a counting corridor

Sensor Selection

First Entrance
 x

First Exit
 x


Second Entrance
 x

Second Exit
 x

Corridor ID

Counting Label

Corridor name



+

List of counting corridors.

Fig. 15: Adding a counting corridor

1. Select the same sensor as selected in the basic settings.
2. Define the **Entrance points** and **Exit points** of the corridor
 - In the live view hold the **Shift** key and click a corner point of the Entrance/Exit point.
 - In the configuration interface click **Set Point** to adopt the coordinates of the corner point.
 - Repeat steps 2 and 3 to define the next corner points.
3. Set a unique **corridor ID**.
4. Select a counting label to make sure only select objects will be counted.
5. Enter an unique **Corridor name**.
6. Optionally click the **bin icon** ③ to delete a corridor.
7. Optionally click the **plus icon** ④ to define another corner point.

Adding a restricted area

Restricted Area

Sensor Selection
Automatic ①

Polygon points

400	x	300	Set Point ②
400	x	660	Set Point
880	x	660	Set Point
880	x	300	Set Point

③

+ ④

Area ID
1

Area Label
All

⑤

+ ⑥

Define multiple restricted areas as polygon. Corners can also be defined by holding the shift key and clicking into the live image and then pressing the 'Set Point' button.

Fig. 16: Adding a restricted area

1. **Select the same sensor** ① as selected in the basic settings.
2. In the live view hold the **Shift** key and click a corner point of the restricted area.
3. In the configuration interface click **Set Point** ② to adopt the coordinates of the corner point.
4. Repeat steps 2 and 3 to define the next corner points.
5. Optionally click the **bin icon** ③ to delete a corner point.
6. Optionally click the **plus icon** ④ to define another corner point.
7. Enter an unique **area ID**.
8. Select an **area label** to make sure only select objects will be detected as restricted.
9. Optionally click the **bin icon** ⑤ to delete a Restricted Area.
10. Optionally click the **plus icon** ⑥ to define another Restricted Area.

Heatmap Settings

In this section you can define heatmap settings e. g. for crowd analytics.

Heatmap Settings		
Heatmap Label	All ▼	Choose for which type of objects the heatmap should be generated.
Display heatmap preview	<input type="checkbox"/>	Shows a low resolution preview of the heatmap in the live-image. High performance impact and interfering with other visualizations. Use for testing purposes only.
Display heatmap legend	<input type="checkbox"/>	Shows the heatmap legend to the right of the live-image
Heatmap minimum percentage	0	Set minimum value to visualize in percent. The current minimum value will be used, if 0 is selected.
Heatmap maximum percentage	100	Set maximum value to visualize in percent. The current maximum value will be used, if 100 is selected.
Ignore still objects	<input type="checkbox"/>	When activated, objects that are standing still will not contribute to the heatmap.
Still object threshold	10	The number of seconds an object needs to be standing still in order to not contribute to the heatmap anymore.

Fig. 17: Heatmap settings

Heatmap Label: Select a heatmap label to make sure only select objects will be used to generate a heatmap.

Display heatmap preview: Check for testing purposes only. Shows a low resolution preview of the heatmap in the live-image. High performance impact and interfering with other visualizations. Use for testing purposes only.

Display heatmap legend: Check to show the heatmap legend to the right of the live-image.

Heatmap minimum percentage: Set the minimum value to visualize in percent. The current minimum value will be used, if 0 is selected.

Heatmap maximum percentage: Set the maximum value to visualize in percent. The current maximum value will be used, if 100 is selected.

Ignore still objects: Check that objects that are standing still will not contribute to the heatmap.

Still object threshold: The number of seconds an object needs to be standing still in order to not contribute to the heatmap anymore.

Storage Settings

Edit how long heatmap and corridor data should be stored:

▼ Storage Settings		
Maximum stored data age	<input type="text" value="90"/>	Heatmap and corridor data older than this number of days is being deleted from the local storage.
Clear Data	<input type="button" value="Clear Data"/>	Deletes all heatmap and corridor data
Store Data	<input type="button" value="Store Data"/>	Writes the current heatmap and corridor data to the local storage

Fig. 18: Storage settings

Maximum storage data age: Enter the number of days after heatmap and corridor data are being deleted from the local storage.

Clear data: Click to delete all heatmap and corridor data.

Store data: Click to write the current heatmap and corridor data to the local storage.

MxMessageSystem

What is MxMessageSystem?

MxMessageSystem is a communication system based on name oriented messages. This means that a message must have a unique name with a maximum length of 32 bytes.

Each participant can send and receive messages. MOBOTIX cameras can also forward messages within the local network. This way, MxMessages can be distributed over the entire local network (see Message Area: Global).

For example, a MOBOTIX 7 series camera can exchange an MxMessage generated by a camera app with an Mx6 camera that does not support certified MOBOTIX apps.

Facts about MxMessages

- 128-bit encryption ensures privacy and security of message content.
- MxMessages can be distributed from any camera of the Mx6 and 7 series.
- The message range can be defined individually for each MxMessage.
 - **Local:** Camera expects an MxMessage within its own camera system (e.g. through a Certified App).
 - **Global:** the camera expects an MxMessage that is distributed in the local network by another MxMessage device (e.g. another camera of the 7 series equipped with a certified MOBOTIX app).
- Actions that the recipients are to perform are configured individually for each participant of the MxMessageSystem.

Basic configuration: Processing the automatically generated app events

Checking automatically generated app events

NOTE!

After successfully activating the app (see [Activation of the Certified App Interface and configuration of corresponding Apps](#)), a generic message event for this specific app is automatically generated in the camera.

- To check the event go to **Setup-Menu / Event Control / Event Overview**.
- The automatically generated message event profile is named after the application (e. g. MxAnalytics).

The screenshot shows the MOBOTIX M73 web interface for configuring message events. The title bar indicates 'MOBOTIX M73 mx10-32-6-96 Message Events'. The interface is divided into two main sections: 'Attribute' and 'Events'.

Attribute Section:

Attribute	Value	Explanation
IP Receive	8000	Port: TCP port to listen on.

Events Section:

Events	Value	Explanation
▶ FFLPR		<input type="checkbox"/> Inactive <input type="checkbox"/> Delete
▼ MxAnalytics		<input type="checkbox"/> Inactive <input type="checkbox"/> Delete

Below the 'MxAnalytics' event, the configuration details are shown:

- Event Dead Time:** 5 (Time to wait [0..3600 s] before the event can trigger anew.)
- Event Sensor Type:**
 - ☐ IP Receive
 - ☒ MxMessageSystem
- Event on receiving a message from the MxMessageSystem.**
- Message Name:** MxAnalytics (Defines an MxMessageSystem name to wait for.)
- Message Range:** Local (There are two different ranges of message distribution: Global: across all cameras within the current LAN. Local: camera internal.)
- Filter Message Content:** No Filter (Optionally choose how to ignore messages containing Filter Value. Select No Filter to trigger on any message with defined Message Name.)

Fig. 19: Example: Generic message event from MxAnalytics AI App

Action handling - Configuration of an action group

CAUTION!

To use events, trigger action groups or record images the general arming of the camera must be enabled

```
(http(s)/<Camera IP address>/control/settings)
```

An action group defines which action(s) is (are) triggered by the MxAnalytics AI App event.

- 1. In the camera web interface, open: **Setup Menu / Action Group Overview** (http(s)://<Camera IP address>/control/actions).

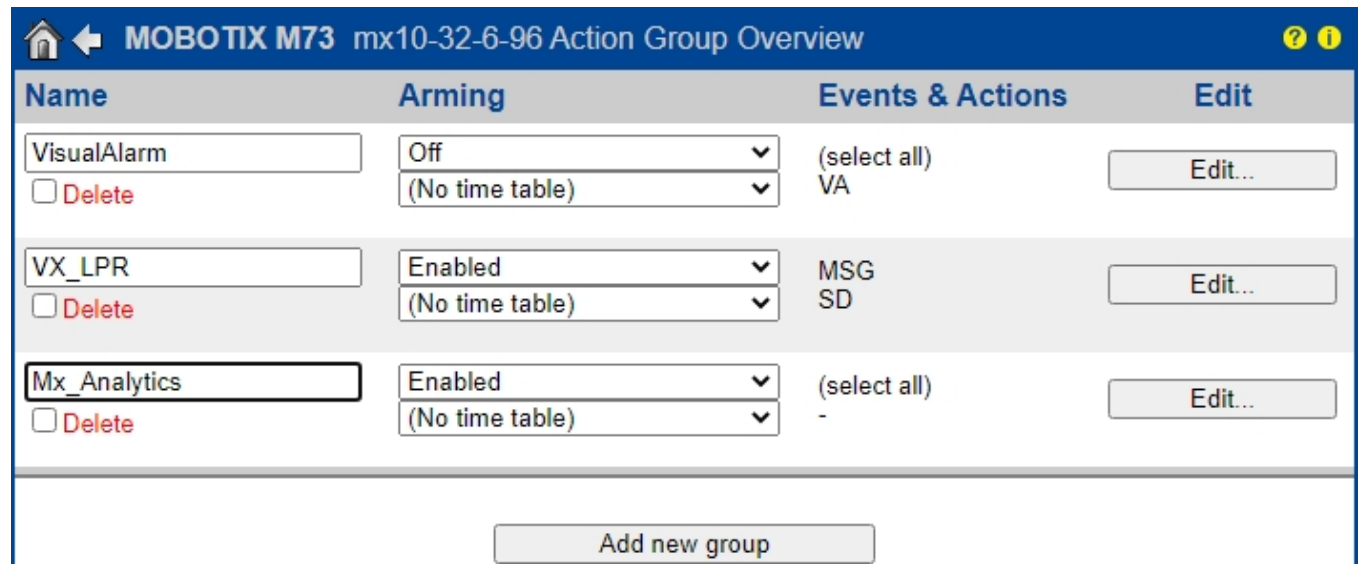


Fig. 20: Defining Action Groups

- Click **Add new group** and give a meaningful name.
- Click **Edit**, to configure the group.

General Settings	Value	Explanation
Action Group	Mx_Analytics	Name: The name is purely informational.
	Enabled	Arming: Controls this action group: <i>Enabled:</i> activate the group. <i>Off:</i> deactivate the group. <i>St:</i> group armed by signal input. <i>CS:</i> group armed by custom signal as defined in General Event Settings .
	(No time table)	Time Table: Time table for this action profile (Time Tables).
Event Selection	(Image Analysis: VM) (Image Analysis: VM2) Message: FFLPR Message: MxAnalytics Message: VaxALPR	Event Selection: Select the events which will trigger the actions below. Use [Ctrl]-Click to select more than one event. Events in parentheses need to be activated first.
Action Details	5	Action Deadline: Time to wait [0..3600 s] before a new action can take place.
	Simultaneously	Action Chaining: Choose how the status of each subaction influences the execution of all others. <i>Simultaneously:</i> All actions are executed simultaneously. <i>Simultaneously until first success:</i> Simultaneous execution, but as soon as one action succeeds (i.e. has been completed or the phone is picked up), all others are terminated. <i>Consecutively:</i> All actions are executed in the specified order. <i>Consecutively until first success:</i> Consecutive execution, but as soon as one action succeeds, the following actions are not executed. <i>Consecutively until first failure:</i> Consecutive execution, but as soon as one action fails, the following actions are not executed.

Fig. 21: Configuring an Action Group

1. Activate **Arming** of the Action Group.
2. Select your message event in the **Event selection** list. To select multiple events, press the shift key.
3. Click **Add new Action**
4. Select a proper action from list **Action Type and Profile**.

Actions	Explanation
Action 1 <input type="checkbox"/> Delete Play Sound: StandardSounds 0	Action Type and Profile: Select the Action Profile to be executed. Action Timeout or Duration: If this action runs longer than the time specified [0..3600 s], it is aborted and returns an error; 0 to deactivate. For Image Profile action, this is the duration and no error returns.

Fig. 22: Select Action Type- and Profile

NOTE!

If the required action profile is not yet available, you can create a new profile in the Admin Menu sections "MxMessageSystem", "Transfer Profiles" and "Audio and VoIP Telephony".

NOTE!

If necessary, you can add further actions by clicking the button again. In this case, please make sure that the "action chaining" is configured correctly (e.g. at the same time).

5. Click on the **Set** button at the end of the dialog box to confirm the settings.

Action settings - Configuration of the camera recordings

1. In the camera web interface, open: **Setup Menu / Event Control / Recording**(http(s)/<Camera IP address>/control/recording).

Storage Settings	Value	Explanation
Recording (REC)	Event Recording	Recording Mode: Type of event and story recording. <i>Snap Shot Recording:</i> stores single JPEG pictures. <i>Event Recording:</i> stores stream files for every event using MxPEG codec. <i>Continuous Recording:</i> continuously streams video data to stream files using MxPEG codec. Events can be recorded with a higher frame rate using <i>Start Recording</i> , <i>Retrigger Recording</i> and <i>Stop Recording</i> .
Start Recording	<div>(Image Analysis: VM) (Image Analysis: VM2) Message: FFLPR Message: MxAnalytics Message: VaxALPR</div> <div>Max fps</div> <div>2</div> <div>8 s</div>	Start Recording: Select the events which will start recording. Use [Ctrl]-Click to select more than one event. Events in parentheses need to be <u>activated</u> first. Event Frame Rate: Recording speed if an event is detected, in frames per second. Recording Time Before Event: Additional recording time before an event in seconds. Recording Time: Time to include in recorded stream after an event has occurred.

Fig. 23: Configuration of camera recording settings

- 2. Activate **Arm Recording**.
- 3. Under **Storage Settings / Recording (REC)** select a **Recording mode**. The following modes are available:
 - Snap Shot Recording
 - Event Recording
 - Continuous Recording
- 4. In list **Start recording** select the message event just created.
- 5. Click on the **Set** button at the end of the dialog box to confirm the settings.
- 6. Click on **Close** to save your settings permanently.

NOTE!

Alternatively, you can save your settings in the Admin menu under Configuration / Save current configuration to permanent memory.

Advanced Configuration: Processing the meta data transmitted by apps

Meta data transferred within the MxMessageSystem

For each event, the app also transfers meta data to the camera. This data is sent in the form of a JSON schema within an MxMessage.

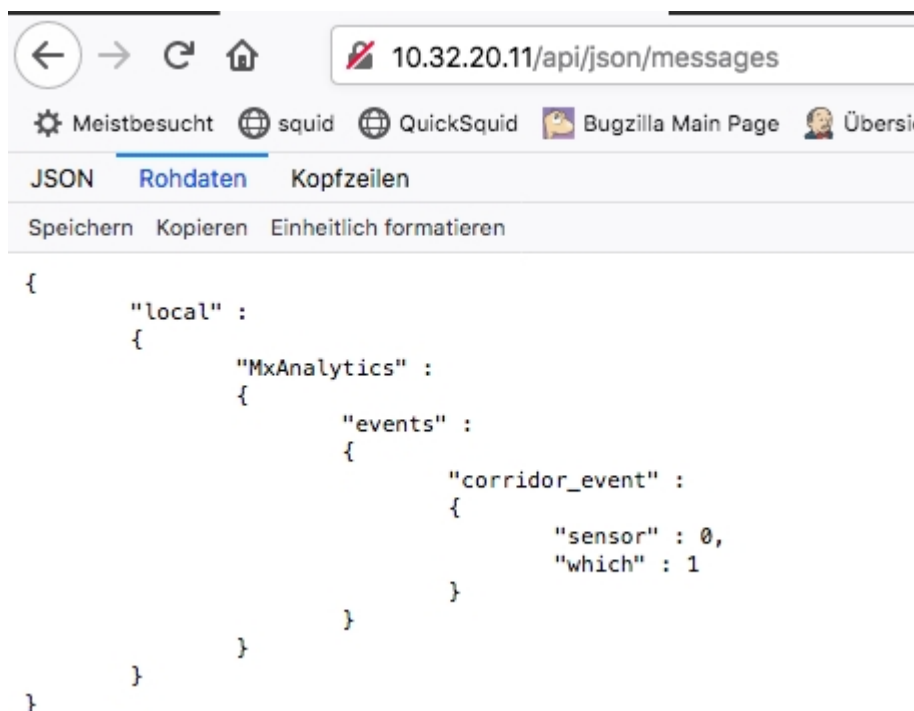


Fig. 24: Example: Meta data transmitted within an MxMessage of the MxAnalytics AI App

NOTE!

To view the meta data structure of the last App event, open the following URL in a web browser: `http(s)/IPAdresseOfYourCamera/api/json/messages`

Creating a Custom Message Event

1. In the camera web interface, open: **Setup Menu / Event Control / Event Overview**

([http\(s\)://<Camera IP address>/control/event_msg](http(s)://<Camera IP address>/control/event_msg))

Event Dead Time:
Time to wait [0..3600 s] before the event can trigger anew.

Event Sensor Type:
Choose the message sensor.

Event Sensor Type:
☐ IP Receive
☒ MxMessageSystem

Event on receiving a message from the MxMessageSystem.

Message Name:
Defines an MxMessageSystem name to wait for.

Message Range:
There are two different ranges of message distribution:
Global: across all cameras within the current LAN.
Local: camera internal.

Filter Message Content:
Optionally choose how to ignore messages containing *Filter Value*. Select *No Filter* to trigger on any message with defined *Message Name*.

Filter Value:
Define either a valid reference value as a string (in JSON format) without line breaks, or an extended regular expression. Open help for examples. This parameter allows using [variables](#).

Fig. 25: Configuration of a user-defined event

2. Configure the parameters of the event profile as follows:

- **Profile Name:** Enter an event related / application related profile name that illustrates the purpose of the profile.
- **Message Name:** Enter the "Message Name" according to the event documentation of the corresponding app (see [Examples for message names and filter values of the MxAnalytics AI App, p. 38](#))
- **Message Range:**
 - Local: Default settings for the MxAnalytics AI App
 - Global: (MxMessage is forwarded from another MOBOTIX camera in the local network.
- **Filter Message Content:**
 - Generic Event: "No Filter"
 - Filtered Event: "JSON Comparison"

Filter Value: see [Examples for message names and filter values of the MxAnalytics AI App, p. 38](#).

CAUTION!

"Filter Value" is used to differentiate the MxMessages of an app / bundle. Use this entry to benefit from individual event types of the apps (if available).

Choose “No Filter” if you want to use all incoming MxMessages as generic event of the related app.

2. Click on the **Set** button at the end of the dialog box to confirm the settings.

Examples for message names and filter values of the MxAnalytics AI App

MxMessage Name	Filter Value	Explanation
MxAnalytics.events.corridor_event		Message at each corridor increment
MxAnalytics.events.restricted_event		Message on each triggering of a Restricted Area
MxAnalytics	"sensor":0	Filter message by sensor (in this case sensor 0)
MxAnalytics	"which":5	Filter message by corridor or restricted area ID (in this case 5)
ObjRec	"numObjects":[⁰]	Message if any object is found in the image
ObjRec	"car"	Message when a car is detected in the image
ObjRec	"object3"	Message if at least 3 arbitrary objects were found in the image
ObjRec	^([[^]]*"person")>{4}	Message, if at least 4 persons were found



[EN_02/22](#)

MOBOTIX AG • Kaiserstrasse • D-67722 Langmeil • Tel.: +49 6302 9816-103 • sales@mobotix.com • www.mobotix.com

MOBOTIX is a trademark of MOBOTIX AG registered in the European Union, the U.S.A., and in other countries. Subject to change without notice. MOBOTIX do not assume any liability for technical or editorial errors or omissions contained herein. All rights reserved. © MOBOTIX AG 2020