

Quick Installation

MOBOTIX D71

© 2022 MOBOTIX AG



Table of Contents

| | |
|---|-----------|
| Table of Contents | 2 |
| Before You Start | 5 |
| Support | 6 |
| Safety Notes | 6 |
| Legal Notes | 7 |
| Notes on System Security | 9 |
| Drilling Template | 11 |
| Drilling Template D71 | 12 |
| Scope of Delivery | 17 |
| MOBOTIX D71: Scope of Delivery | 18 |
| Mounting Supplies: Scope of Delivery | 19 |
| Wall Mount: Scope of Delivery | 20 |
| In-Ceiling Set: Scope of Delivery | 21 |
| Technical Specifications | 23 |
| Order Information | 24 |
| Hardware | 24 |
| Image Formats, Frame Rates, Image Storage | 26 |
| General Features | 27 |
| Video Analysis | 28 |
| Video Management Software | 28 |
| Model Variants | 28 |
| Dimensions | 30 |
| Mounting | 31 |
| Before Mounting the Camera | 33 |
| Protective Measures | 34 |
| Attaching the Anti Glare Ring | 35 |
| Adjusting the Camera Lens | 35 |
| Removing the Dome | 36 |
| Adjusting the Camera Lens | 37 |
| Attaching the dome | 39 |
| Mounting Options | 39 |
| Mounting the Camera Without Accessories | 40 |
| Mounting with the On-Wall Set | 42 |
| Mounting with the In-Ceiling Set | 45 |
| Mounting with the Wall Mount | 47 |
| Mounting on a Corner (Corner/Pole Mount) | 49 |

| | |
|--|-----------|
| Mounting on a Pole (Corner/Pole Mount) | 52 |
| Connecting the Camera | 53 |
| Connecting an USB-C Device | 53 |
| Connecting I/O Devices | 53 |
| Connecting the Camera to the Network | 56 |
| Operating the Camera | 59 |
| Getting Started | 60 |
| Network Settings | 60 |
| Camera Software in the Browser | 67 |
| Access the camera's website in the browser | 68 |
| Basic Settings | 68 |
| Maintenance | 71 |
| Replacing the microSD card | 72 |
| Cleaning the Camera | 73 |

Before You Start

This section contains the following information:

| | |
|---------------------------|----------|
| Support | 6 |
| Safety Notes | 6 |
| Legal Notes | 7 |

Support

If you need technical support, please contact your MOBOTIX dealer. If your dealer cannot help you, he will contact the support channel to get an answer for you as quickly as possible.

If you have internet access, you can open the MOBOTIX help desk to find additional information and software updates. Please visit:

www.mobotix.com > [Support](#) > [Help Desk](#)



Safety Notes

- This product must not be used in locations exposed to the dangers of explosion.
- Do not use this product in a dusty environment.
- Protect this product from moisture or water entering the housing.
- Install this product as outlined in this document. A faulty installation can damage the product!
- This equipment is not suitable for use in locations where children are likely to be present.
- When using a Class I adapter, the power cord shall be connected to a socket-outlet with proper ground connection.
- To comply with the requirements of EN 50130-4 regarding the power supply of alarm systems for 24/7 operation, it is highly recommended to use an uninterruptible power supply (UPS) for backing up the power supply of this product.
- This equipment is to be connected only to PoE networks without routing to other networks.

NOTE! Observe the [MOBOTIX MOVE Installation Hints](#) document to ensure optimum performance of the camera features.

Legal Notes

Legal Aspects of Video and Sound Recording

You must comply with all data protection regulations for video and sound monitoring when using MOBOTIX AG products. Depending on national laws and the installation location of the cameras, the recording of video and sound data may be subject to special documentation or it may be prohibited. All users of MOBOTIX products are therefore required to familiarize themselves with all applicable regulations and to comply with these laws. MOBOTIX AG is not liable for any illegal use of its products.

Declaration of Conformity

The products of MOBOTIX AG are certified according to the applicable regulations of the EC and other countries. You can find the declarations of conformity for the products of MOBOTIX AG on www.mobotix.com under **Support > Download Center > Marketing & Documentation > Certificates & Declarations of Conformity**.

RoHS Declaration

The products of MOBOTIX AG are in full compliance with European Unions Restrictions of the Use of Certain Hazardous Substances in Electrical and Electronic Equipment (RoHS Directive 2011/65/EC) as far as they are subject to these regulations (for the RoHS Declaration of MOBOTIX, please see www.mobotix.com, **Support > Download Center > Marketing & Documentation > Brochures & Guides > Certificates**).

Disposal

Electrical and electronic products contain many valuable materials. For this reason, we recommend that you dispose of MOBOTIX products at the end of their service life in accordance with all legal requirements and regulations (or deposit these products at a municipal collection center). MOBOTIX products must not be disposed of in household waste! If the product contains a battery, please dispose of the battery separately (the corresponding product manuals contain specific directions if the product contains a battery).

Disclaimer

MOBOTIX AG does not assume any responsibility for damages, which are the result of improper use or failure to comply to the manuals or the applicable rules and regulations. Our General Terms and Conditions apply. You can download the current version of the **General Terms and Conditions** from our website at www.mobotix.com by clicking on the corresponding link at the bottom of every page.

FCC Disclaimer

This equipment has been tested and found to comply with the limits for a Class A digital device, pursuant to part 15 of the FCC Rules. These limits are designed to provide reasonable protection against harmful interference when the equipment is operated in a commercial environment. This equipment generates, uses, and can radiate radio frequency energy and, if not installed and used in accordance with the instruction manual, may cause harmful interference to radio communications. Operation of this equipment in a residential area is likely to cause harmful interference in which case the user will be required to correct the interference at his own expense.

Notes on System Security

To protect the camera against security risks in data technology, the following measures are recommended after the installation has been completed:

MxManagementCenter:

- Menu **View > Wizards & Tools > Secure System:**
 - **Change camera factory default password:** ✓
 - **Enable encrypted HTTPS:** ✓
 - **Disable public access:** ✓
 - **User Management** (for all users):
 - **Force Complex Password:** ✓
 - **Log out on Inactivity:** After 5 min

User interface of the camera in the browser:

- **Admin Menu > Network Setup > Web Server:**
 - **Enable MxWeb:** –
 - **Enable intrusion detection:** ✓
 - **Notification threshold:** 10
 - **Timeout:** 60 minutes
 - **Block IP Address:** ✓

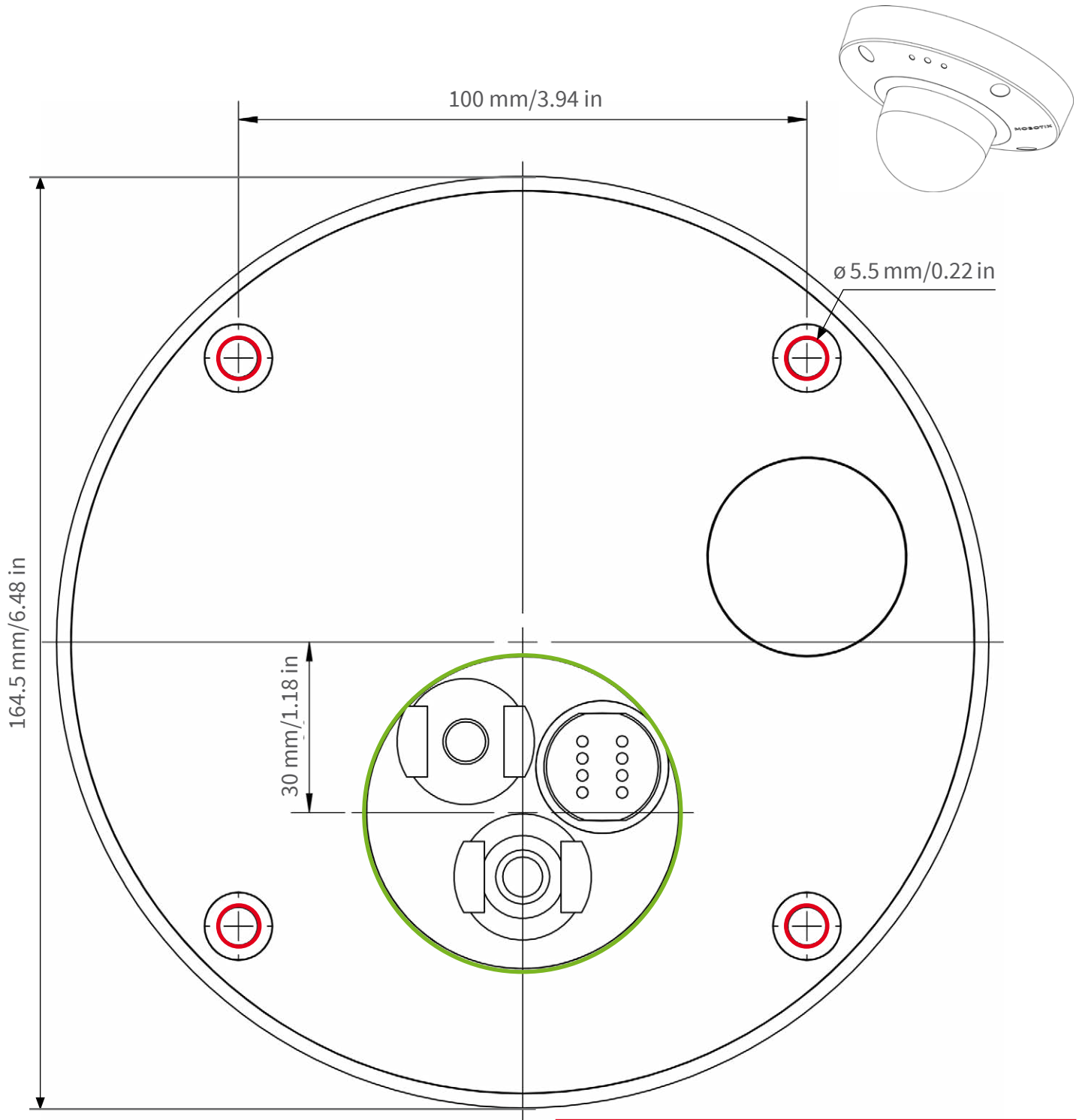
For more information on this new feature, please read the «Cyber Protection Guide» on www.mobotix.com (under Support > Download Center > Documentation > Brochures & Guides > Cyber Security).

Drilling Template

Open this file in a PDF viewer (Acrobat Reader, Foxit Reader, or similar) and print the file **without scaling (original size)**.

NOTE! Download the drilling template from the MOBOTIX website: www.mobotix.com > [Support](#) > [Download Center](#) > [Marketing & Documentation](#) > [Drilling Templates](#).

CAUTION! Always print or copy the drilling template at 100% of the original size!



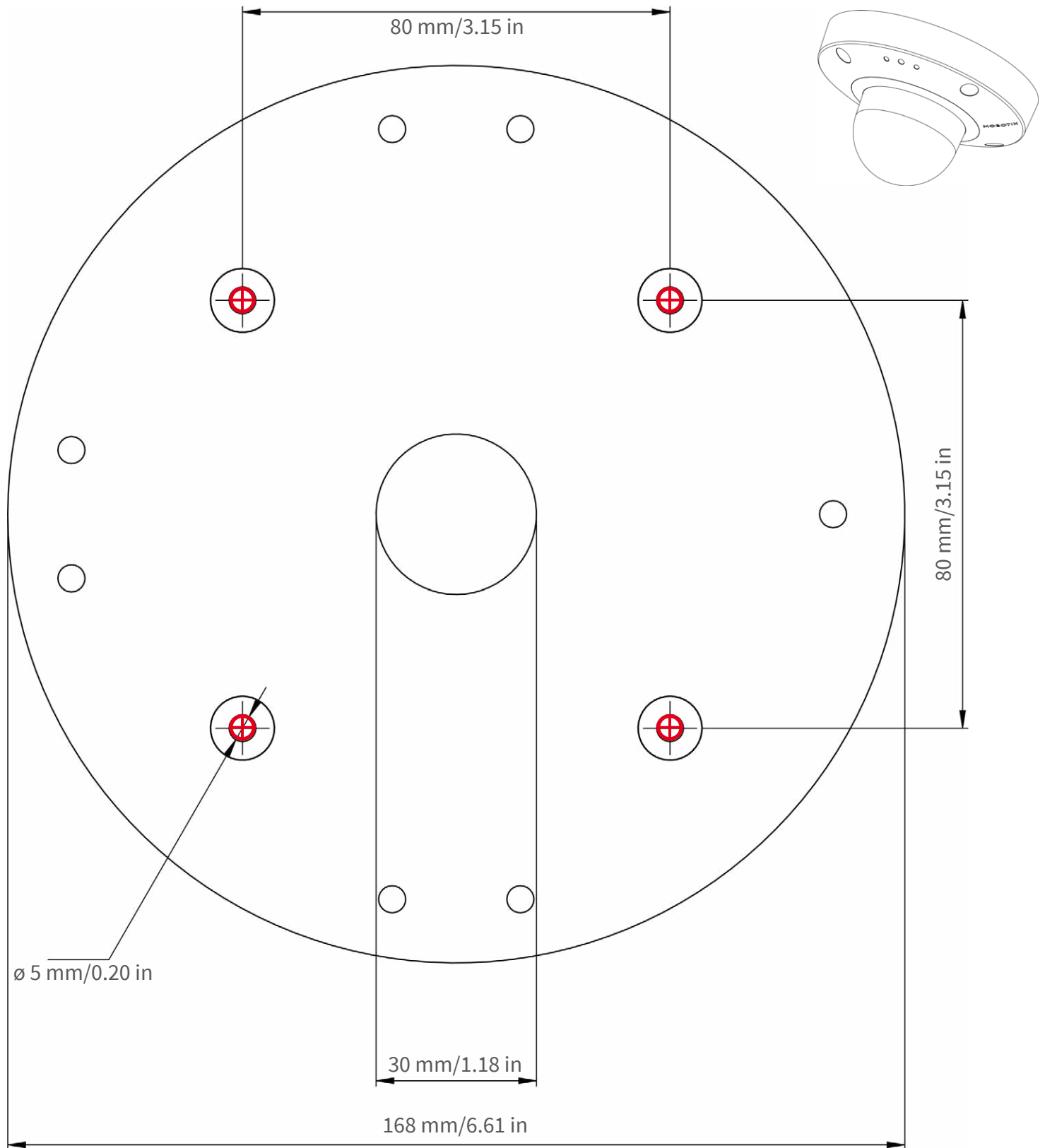
Ausschnitt für Kabel und Anschlüsse
Cutout for cables and connectors
Découpe pour les câbles et les connexions



Nur in Originalgröße kopieren oder ausdrucken!

Always copy or print at 100% of original size!

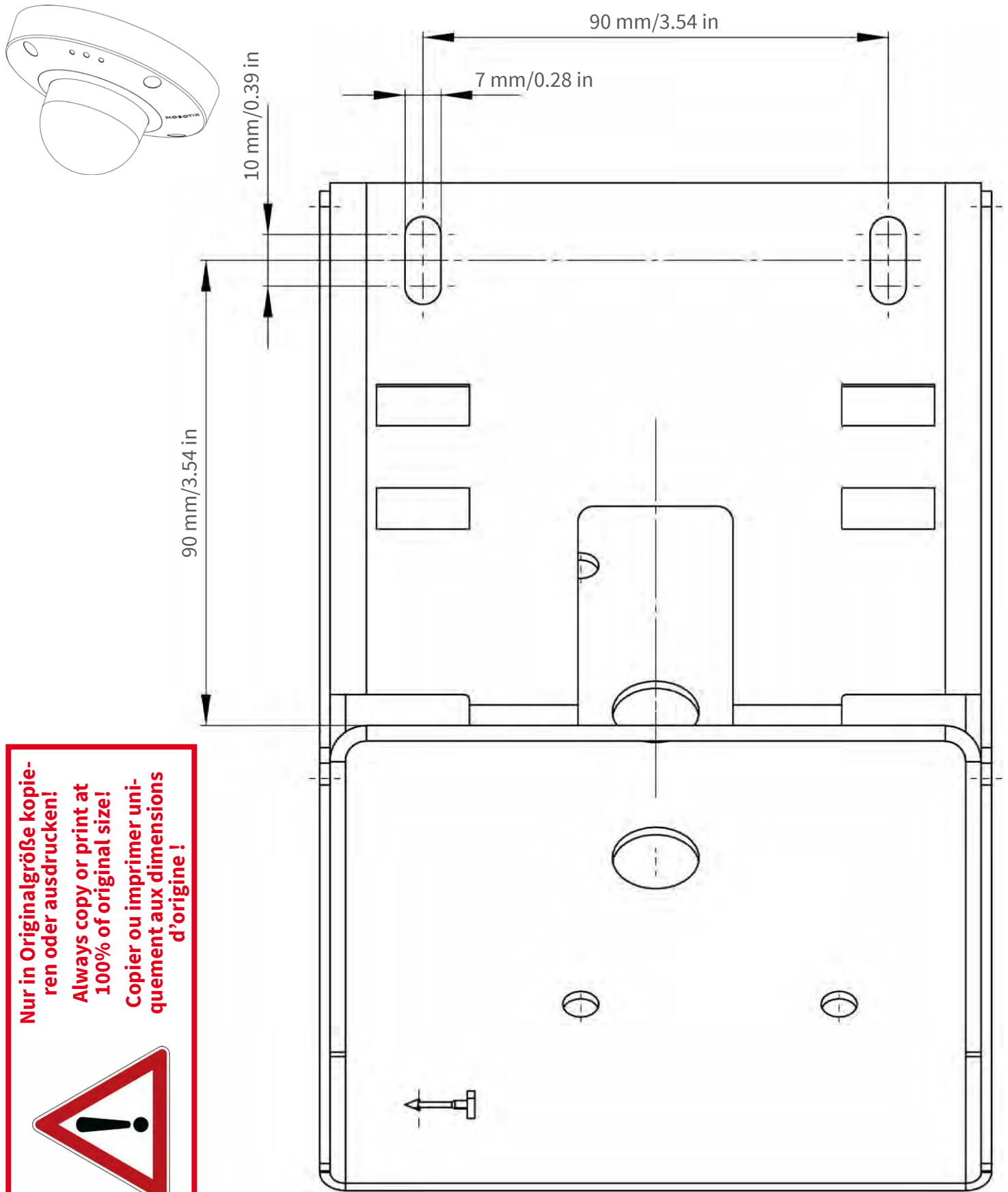
Copier ou imprimer uniquement aux dimensions d'origine !

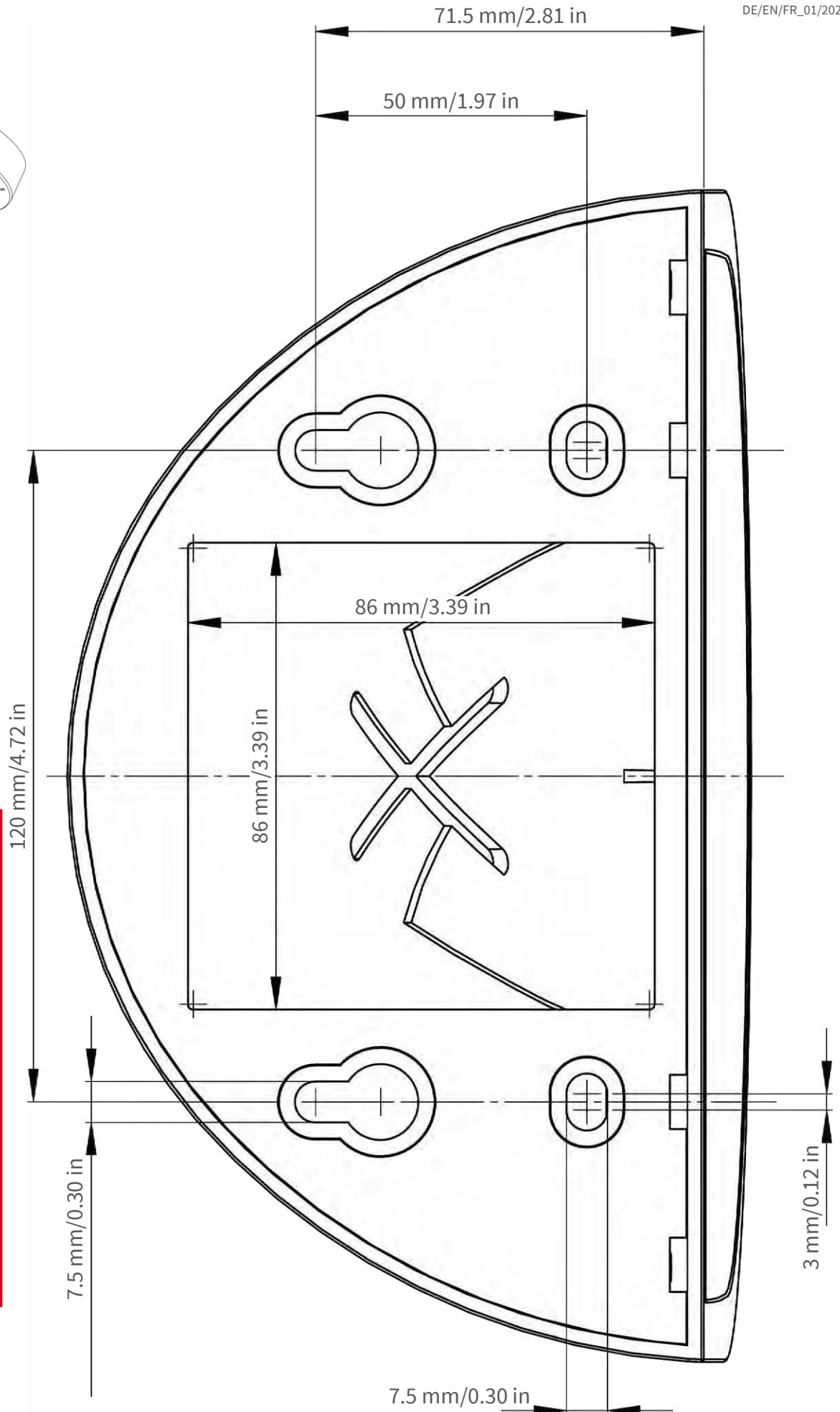
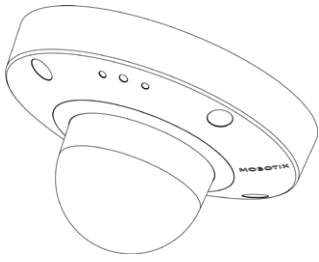


Nur in Originalgröße kopieren oder ausdrucken!

Always copy or print at 100% of original size!

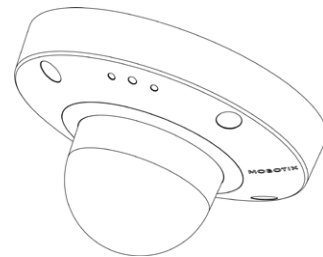
Copier ou imprimer uniquement aux dimensions d'origine !





Nur in Originalgröße kopieren oder ausdrucken!
Always copy or print at 100% of original size!
Copier ou imprimer uniquement aux dimensions d'origine !





Ø 200 mm / 7.87 in



Nur in Originalgröße kopieren oder ausdrucken!

Always copy or print at 100% of original size!

Copier ou imprimer uniquement aux dimensions d'origine !

Scope of Delivery

This section contains the following information:

| | |
|---|-----------|
| MOBOTIX D71: Scope of Delivery | 18 |
| Mounting Supplies: Scope of Delivery | 19 |
| Wall Mount: Scope of Delivery | 20 |
| In-Ceiling Set: Scope of Delivery | 21 |

MOBOTIX D71: Scope of Delivery



Fig. 1: Scope of delivery MOBOTIX D71 Body

Scope of delivery MOBOTIX D71 Body

| Item | Count | Description |
|------|-------|---|
| 1.1 | 1 | I/O dome, white (installed) |
| 1.2 | 1 | USB plug, blue (installed) |
| 1.3 | 1 | Bayonet catch for USB port, blue (installed) |
| 1.4 | 1 | Ethernet plug, blue (installed) |
| 1.5 | 1 | Bayonet catch for Ethernet port, blue (installed) |
| 1.6 | 1 | Ethernet patch cable RJ45, 50 cm/19.7 in |
| 1.7 | 1 | SD card cover (installed) |
| 1.8 | 1 | SD card 8 GB (installed) |
| 1.9 | 1 | Mounting supplies (see Scope of Delivery MOBOTIX D71 Mounting Supplies , p. 19) |
| 1.10 | 1 | Important Safety Information |
| 1.11 | 1 | Camera Connection Flyer |
| 1.12 | 1 | Sticker with EAN number of camera |

Scope of delivery MOBOTIX D71 Body

| Item | Count | Description |
|------|-------|-----------------------------------|
| 1.13 | 1 | Sticker with IP address of camera |
| 1.14 | 2 | Anti-glare ring |

Mounting Supplies: Scope of Delivery

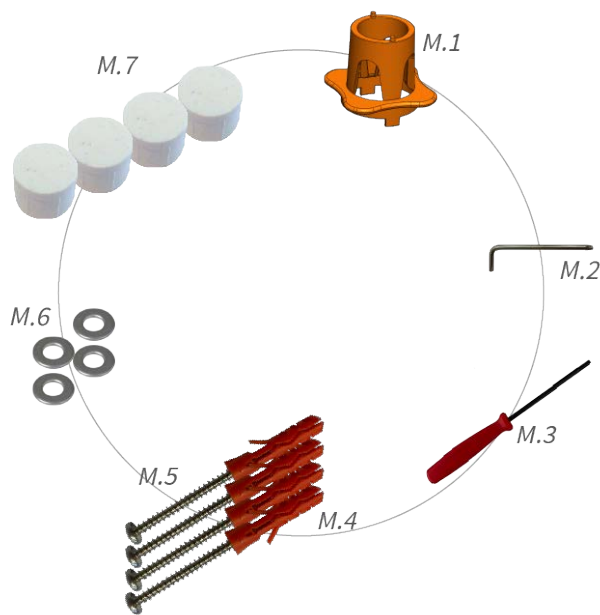


Fig. 2: Scope of Delivery MOBOTIX D71 Mounting Supplies

Scope of Delivery D71 Mounting Supplies

| Item | Count | Description |
|------|-------|---|
| M.1 | 1 | D71 lens wrench, orange |
| M.2 | 1 | Torx wrench 3.5 mm |
| M.3 | 1 | Allen wrench 2.5 mm |
| M.4 | 4 | Dowels 8 mm |
| M.5 | 4 | Stainless steel pan head-screws 4.5x60 mm |
| M.6 | 4 | Stainless steel washers Ø5.3 mm |
| M.7 | 4 | Sealing plugs, white |

Wall Mount: Scope of Delivery

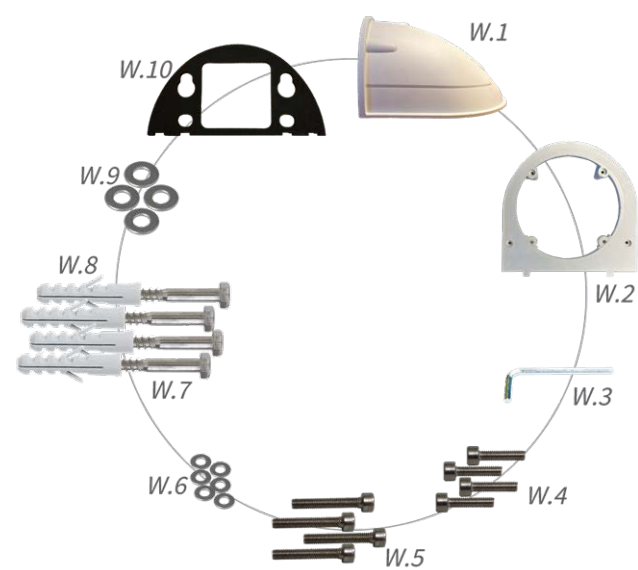


Fig. 3: Scope of Delivery Wall Mount

Scope of Delivery Wall Mount

| Item | Count | Description |
|------|-------|---|
| W.1 | 1 | Wall Mount upper shell, white |
| W.2 | 1 | Bottom plate, white |
| W.3 | 1 | Allen wrench 3 mm |
| W.4 | 2 | Stainless steel Allen screws 4x18 mm |
| W.5 | 4 | Stainless steel Allen screws 4x40 mm |
| W.6 | 6 | Stainless steel washers Ø4.3 mm |
| W.7 | 4 | Stainless steel hex head screws 6x50 mm |
| W.8 | 4 | Dowels 8 mm |
| W.9 | 4 | Stainless steel washers Ø6.3 mm |
| W.10 | 1 | Adhesive wall sealing, black |

In-Ceiling Set: Scope of Delivery

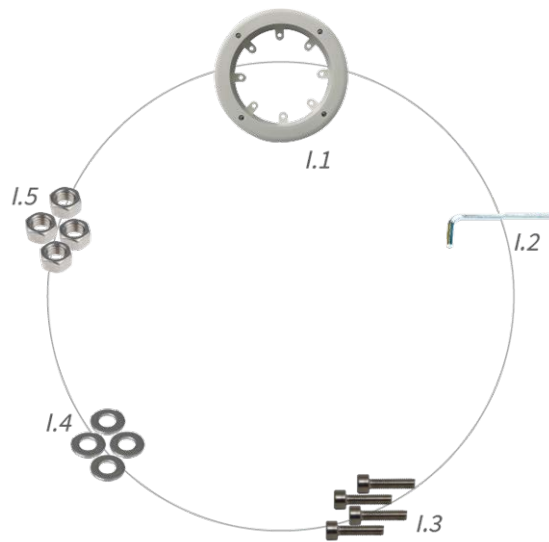


Fig. 4: Scope of Delivery Wall Mount

Scope of Delivery In-Ceiling Set

| Item | Count | Description |
|------|-------|---------------------------------------|
| I.1 | 1 | In-Ceiling Set |
| I.2 | 1 | Allen wrench 5 mm |
| I.3 | 4 | Stainless steel Allen screws M6x30 mm |
| I.4 | 4 | Stainless steel washers M6 |
| I.5 | 4 | Stainless steel hexagon nut M6 |

Technical Specifications

This section contains the following information:

| | |
|--|-----------|
| Order Information | 24 |
| Hardware | 24 |
| Image Formats, Frame Rates, Image Storage | 26 |
| General Features | 27 |
| Video Analysis | 28 |
| Video Management Software | 28 |
| Model Variants | 28 |
| Dimensions | 30 |

Order Information

| | |
|-------------|-------------------------------|
| Name | MOBOTIX D71 |
| Order Code: | Mx-D71A-8DNxxx/Mx-D71A-4DNxxx |

Hardware

| | |
|------------------------------|---|
| Image sensor (DN) | 4K 3840x2160/4MP 2688x1512 |
| Light sensitivity | <ul style="list-style-type: none">■ Color sensor (day): 0,1 lx @ 1/60 s; 0,005 lx @ 1 s■ BW sensor (night): 0,02 lx @ 1/60 s; 0,001 lx @ 1 s |
| Exposure control | Manual and automatic mode 1 s to 1/16,000 s |
| Video codecs | <ul style="list-style-type: none">■ H.264, H.265 with Triple Streaming■ MxPEG+■ MJPEG |
| IK protection class | IK10 |
| IP protection class | IP66 |
| Operating temperature range | −40 to 65 °C/−40 to 149 °F |
| Min. cold start temperature | −30 °C/−22 °F |
| Relative Humidity | 95 % non-condensing |
| Internal DVR, out of the box | MicroSD card (8 GB), MxPEG+ recording only |

| | | | | | | | | | |
|-----------------------------------|--|-----|---------|-------|--|----------|--|-----------------------|---|
| I/Os | <p>INPUT</p> <ul style="list-style-type: none"> ■ Contact Closure (no galvanic isolation necessary) or up to 50V AC/DC ■ max. length for cables: 50m <p>OUTPUT</p> <ul style="list-style-type: none"> ■ requires pull-up resistor and external power supply (10mA / max. 50V DC - no AC) ■ max. length for cables: depends on loop impedance of the connected cable. <p>Specs for cables connected to the PCB terminals:</p> <p><i>Conductor cross section</i></p> <table> <tr> <td>AWG</td><td>20 - 26</td></tr> <tr> <td>Rigid</td><td>0.14mm² - 0.5mm²</td></tr> <tr> <td>Flexible</td><td>0.14mm² - 0.5mm²</td></tr> <tr> <td>Flexible with ferrule</td><td>0.25mm² - 0.34mm²</td></tr> </table> | AWG | 20 - 26 | Rigid | 0.14mm ² - 0.5mm ² | Flexible | 0.14mm ² - 0.5mm ² | Flexible with ferrule | 0.25mm ² - 0.34mm ² |
| AWG | 20 - 26 | | | | | | | | |
| Rigid | 0.14mm ² - 0.5mm ² | | | | | | | | |
| Flexible | 0.14mm ² - 0.5mm ² | | | | | | | | |
| Flexible with ferrule | 0.25mm ² - 0.34mm ² | | | | | | | | |
| Microphone/Speaker | <p>Integrated Microphone:</p> <ul style="list-style-type: none"> ■ Sensitivity: -35 dB +/-4 dB (0 dB = 1 V/pa, 1 kHz) <p>Integrated Loudspeaker:</p> <ul style="list-style-type: none"> ■ 0.9 W at 8 Ohm <p>Line in / Line out</p> | | | | | | | | |
| Integrated illumination | IR up to 30 m/ 100 ft (may be more depending on scene) | | | | | | | | |
| Shock detector (tamper detection) | Yes | | | | | | | | |
| Max. power consumption | max. 25 W | | | | | | | | |
| Electrical surge protection | Available with MX-Overvoltage-Protection-Box (not part of the scope of delivery) | | | | | | | | |
| PoE standard | PoE Plus (802.3at-2009)/Class 4 (Class 3 can be enabled via HW switch. Note: IR illumination requires Class 4) | | | | | | | | |
| Interfaces | <ul style="list-style-type: none"> ■ Ethernet 1000BaseT (RJ45 according to EIA/TIA-568B) ■ USB-C/USB2.0; High-Speed ($V_{out} = 5.1\text{ V}$, $I_{out} = 0.9\text{ A}$, $P_{out} = 4.5\text{ W}$) | | | | | | | | |
| Mounting Options | Wall- or ceiling-mountable | | | | | | | | |

Technical Specifications

Image Formats, Frame Rates, Image Storage

| | |
|----------------------------------|---|
| Dimensions (Ø x height) | 164 x 96 mm |
| Weight | Gross weight: 1.180g |
| Housing | Aluminum, PBT-30GF |
| Standard accessories | See MOBOTIX D71: Scope of Delivery |
| Detailed technical documentation | www.mobotix.com > Support > Download Center > Marketing & Documentation |
| MTBF | 80,000 hours |
| Certificates | EN 50121-4:2015, EN 50581:2012, EN 55032:2012+AC:2013, EN 55035:2017, FprEN 61000-6-1:2015, EN 61000-6-2:2015, EN 61000-6-3:2007+A1:2011+AC:2012, EN 61000-6-4:2007+A1:2011, EN 62368-1:2014 + AC: 2015 + A11: 2017 + AC: 2017, IEC 60950-22:2016, AS/NZS CISPR32:2015, 47 CFR Part 15b |
| Protocols | DHCP (client and server), DNS, ICMP, IGMP v3, IPv4, IPv6, HTTP, HTTPS, FTP, FTPS, NFS, NTP (client and server), RTP, RTCP, RTSP, SFTP, SIP (client and server), SMB/CIFS, SNMP, SMTP, SSL/TLS 1.3, UDP, VLAN, VPN, Zeroconf/mDNS |
| Manufacturer warranty | 5 years |

Image Formats, Frame Rates, Image Storage

| | |
|---------------------------|---|
| Available video codecs | MxPEG+/MJPEG/H.264/H.265 |
| Image resolutions | VGA 640x360, XGA 1024x576, HD 1280x720, FullHD 1920x1080, QHD 2560x1440, 4K UHD 3840x2160 |
| H.264 multi streaming | Triple Streaming |
| Multicast stream via RTSP | Yes |
| Max. image resolution | 4K UHD 3840x2160/4MP 2688x1512 |
| Max. frame rate | MxPEG: 20@4k, H.264: 30@4k, H.265: 30@4k |

General Features

| Feature | Properties |
|--------------------------------------|--|
| WDR | Up to 120 dB |
| Software features | <ul style="list-style-type: none"> ■ H.264, H.265 Multistreaming ■ Multicast stream via RTSP ■ Digital pan, tilt, zoom/vPTZ (up to 8x zoom) ■ Genetec protocol integration ■ Custom exposure zones ■ Snapshot recording (pre/post-alarm images) ■ Continuous recording ■ Event recording ■ Time-controlled flexible event logic ■ Weekly schedules for recordings and actions ■ Event video and image transfer via FTP and email ■ Playback and QuadView via web browser ■ Animated logos on the image ■ Master/Slave functionality ■ Privacy zone scheduling ■ Remote alarm notification (network message) ■ Programming interface (HTTP-API) ■ MOBOTIX MessageSystem |
| ONVIF compatibility | Profile G, S, T |
| Master/Slave functionality | Yes |
| Remote alarm notification | email, network message (HTTP/HTTPS), SNMP, MxMessageSystem |
| DVR/storage management (MxPEG+ only) | Within the camera via microSD card, on external USB and NAS devices, different streams for live image and recording, MxFFS with buffered archive, pre- and post-alarm images, storage monitoring with error reporting |
| Camera and data security | User and group management , SSL connections, IP-based access control, IEEE 802.1X, intrusion detection, digital image signature |

Video Analysis

| | |
|------------------------|--|
| Video motion detection | Yes |
| MxActivitySensor | Version 1.0, 2.1 and object-based MxAnalytics AI |
| MxAnalytics | Heatmap, people counting & object-based counting |
| MOBOTIX App support | Yes |

Video Management Software

| Feature | Properties |
|--------------------|--|
| MOBOTIX HUB | Yes www.mobotix.com > Support > Download Center > Software Downloads |
| MxManagementCenter | Yes (MxMC 2.2 and higher) www.mobotix.com > Support > Download Center > Software Downloads |
| MOBOTIX LIVE App | Yes Available in Android and iOS App Stores. |

Model Variants

| Order Code | Horizontal Angle of View |
|-------------------------------------|--------------------------|
| 4K Image Sensor (3840x2160) | |
| Mx-D71A-8DN050 | 95° |
| Mx-D71A-8DN080 | 60° |
| Mx-D71A-8DN100 | 45° |
| Mx-D71A-8DN150 | 30° |
| Mx-D71A-8DN280 | 15° |
| 4MP Image Sensor (2688x1512) | |
| Mx-D71A-4DN050 | 95° |

| Order Code | Horizontal Angle of View |
|----------------|--------------------------|
| Mx-D71A-4DN080 | 60° |
| Mx-D71A-4DN100 | 45° |
| Mx-D71A-4DN150 | 30° |
| Mx-D71A-4DN280 | 15° |

For a complete list of lenses for MOBOTIX cameras, please see the Lens Table document for MOBOTIX 7 models on www.mobotix.com > **Support** > **Download Center** > **Marketing & Documentation** > **Lens Table**.

Dimensions

NOTE! Download the drilling template from the MOBOTIX website: www.mobotix.com > Support > Download Center > Marketing & Documentation > Drilling Templates.

CAUTION! Always print or copy the drilling template at 100% of the original size!

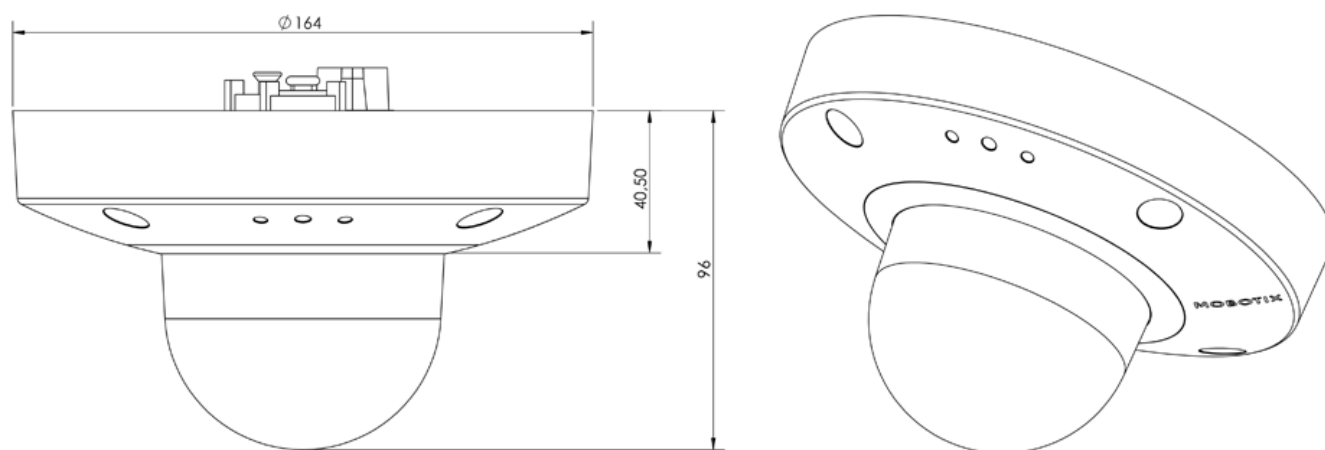


Fig. 5: MOBOTIX D71: All measurements in mm

Mounting

This section contains the following information:

| | |
|--|-----------|
| Before Mounting the Camera | 33 |
| Protective Measures | 34 |
| Attaching the Anti Glare Ring | 35 |
| Adjusting the Camera Lens | 35 |
| Removing the Dome | 36 |
| Adjusting the Camera Lens | 37 |
| Attaching the dome | 39 |
| Mounting Options | 39 |
| Mounting the Camera Without Accessories | 40 |
| Mounting with the On-Wall Set | 42 |
| Mounting with the In-Ceiling Set | 45 |
| Mounting with the Wall Mount | 47 |
| Mounting on a Corner (Corner/Pole Mount) | 49 |
| Mounting on a Pole (Corner/Pole Mount) | 52 |
| Connecting the Camera | 53 |
| Connecting an USB-C Device | 53 |

Connecting I/O Devices53

Connecting the Camera to the Network56

Before Mounting the Camera

CAUTION! Before mounting the camera make sure to copy the IP address ① on the back of the camera housing or on the camera packaging. You will need this address to configure the camera in the browser later on (see [Camera Software in the Browser](#), p. 67).



The MOBOTIX D71 has been designed for wall mounting. Using optional accessories, you can also install the camera as follows:

- For mounting on walls looking downwards, use the Wall Mount; see [Mounting with the Wall Mount](#), p. 47.
- For mounting on poles, use the Corner/Pole Mount and the Wall Mount; see [Mounting on a Pole \(Corner/Pole Mount\)](#), p. 52.
- For mounting on corners of buildings, use the Corner/Pole Mount and the Wall Mount; see [Mounting on a Corner \(Corner/Pole Mount\)](#), p. 49.

NOTE! Download the drilling template from the MOBOTIX website: www.mobotix.com > [Support](#) > [Download Center](#) > [Marketing & Documentation](#) > [Drilling Templates](#).

CAUTION! Always print or copy the drilling template at 100% of the original size!

Before mounting the MOBOTIX D71, the following questions should be answered:

- Where and how will the camera be mounted?
- How is the mounting surface level?
- Which other mounting options are available?
- Which accessories might be needed?
- How is the camera connected to the network and how is the power supplied?
- How are the connections furnished from the building?
- What cabling considerations are necessary?
- Do you want to use a larger SD card (see [Replacing the microSD card](#), p. 72)?

If you have further questions, please ask your MOBOTIX partner or contact MOBOTIX support under www.mobotix.com > [Support](#) > [Help Desk](#).

Protective Measures

WARNING! When laying cables indoors and outdoors, the current regulations for cable laying, lightning and fire protection must always be observed.

MOBOTIX cameras are protected against the effects of minor over voltages by a number of measures. However, these measures cannot prevent larger surge voltages from causing damage to the camera. When installing the cameras outdoors, special attention should therefore be paid to lightning protection and the associated dangers for the building and network infrastructure.

In general, you should only have MOBOTIX cameras installed by certified specialist companies that are familiar with the installation and safe operation of network devices and the underlying regulations for lightning and fire protection as well as the current technology for preventing damage from surge voltages.

Notes on Cable Laying

- **Data cable:** Only double-shielded CAT5 cable or better (S/STP) may be used as data cable for the Ethernet interface.

NOTE! For outdoor use, special requirements apply for the cables to be used and the lightning protection.

- **Cable length:** The individual cable sections must not exceed the maximum permissible lengths in order to ensure perfect data transmission.
- **Avoidance of induction:** Data cables may only be laid parallel to power or high-voltage lines if the prescribed minimum distances are observed.
- Only original MOBOTIX cables should be used to connect the sensor modules, patch cables and USB cables in order to guarantee weather resistance according to IP66. The plugs supplied must be used if additional cables are required (MxBus, audio).

Fire Protection

When laying cables for the power supply, the relevant country-specific regulations (e.g. VDE in Germany) and the fire protection regulations valid at the installation site must be observed.

Lightning and Surge Protection

Measures should always be taken to protect the camera from electrical surge damage.

NOTE! Electrical surge protection available using the MX-Overvoltage-Protection-Box, which is available as an accessory.

Further information on how to avoid damage caused by lightning and over voltage is available from manufacturers of lightning and over voltage protection devices.

Attaching the Anti Glare Ring

The anti-glare ring is used to protect the lens from glare effects that can have a negative effect on the camera image.

CAUTION! The anti-glare ring is not mounted when delivered and should be installed before operating the device.

1. Remove the dome (see [Removing the Dome, p. 36](#))
2. Remove the protective film from the adhesive surface of the anti-glare ring [1.14, p. 19](#).
3. Carefully press the anti-glare ring ① with the adhesive surface into the recess around the lens.



Adjusting the Camera Lens

Adjusting the camera at the mounting position will ensure that you will see the desired field of view later on.

CAUTION! When adjusting the image focus or the field of view of the camera, always make sure that you can see the live image of the camera on your monitor. See [Camera Software in the Browser, p. 67](#).

Removing the Dome

1. Remove the cover of the clamping ring ① by turning counterclockwise until resistance is felt.



2. Loosen the four fastening screws from the clamping ring with the supplied allen wrench [Mounting Supplies: Scope of Delivery, p. 19](#) and then carefully pull off the dome.



3. Pull the dome off upwards.

Adjusting the Camera Lens

1. Release the two Allen screws ① on both sides of the lens mount with the supplied Allen wrench [Mounting Supplies: Scope of Delivery](#), p. 19.



2. Aim the camera by rotating ② and panning ③ the lens mount.

CAUTION! Never use force when adjusting the direction of the camera, as this could damage the camera beyond repair.



3. Fasten the two Allen screws on both sides of the lens mount.

4. Adjust the lens ④ by turning the lens with the lens wrench, orange [M.1, p. 19](#).

NOTE! After focusing, further adjustment of the focusing must be made due to the optical properties of the dome.

This table shows the approximate rotations required to optimally adjust the objective to the mounted dome.

| Lens | Turns (counterclockwise) | Degrees (counterclockwise) |
|-----------|--------------------------|----------------------------|
| 95°/5 mm | ~ 0 | ~ 0° |
| 60°/8 mm | ~ 1/16 | ~ 22,5° |
| 45°/10 mm | ~ 1/8 | ~ 45° |
| 30°/15 mm | ~ 1/4 | ~ 90° |
| 15°/28 mm | ~ 1 | ~ 360° |



5. If required, clean the optical surfaces using a clean, lint-free cotton cloth.
6. If not already in place attach the anti-glare ring to the lens (see [Attaching the Anti Glare Ring, p. 35](#)).
7. Reinsert the dome and the clamping ring, then fasten the four fastening screws with the supplied Allen wrench [Mounting Supplies: Scope of Delivery, p. 19](#).

Attaching the dome

1. Insert the dome and the clamping ring, then fasten the four fastening screws with the supplied Allen wrench [Mounting Supplies: Scope of Delivery, p. 19.](#)



2. Attach the cover of the clamping ring ① by turning clockwise until resistance is felt.

CAUTION! Never use force when adjusting the direction of the camera, as this could damage the camera beyond repair.



Mounting Options

You can mount the MOBOTIX D71 to any even surface e.g. on a wall or ceilings without any accessories.

Accessories for Mounting

- The Wall Mount provides the ideal mounting option for installations where the camera is supposed to point downwards.
- Using the Wall Mount and the stainless steel Corner/Pole Mount, the camera can also be mounted to poles with up to 180 mm/7.1" diameter or to 90° corners.

All mounting options provide concealed cabling, thus improving installation security.

CAUTION! Installation only on flat surface! Unevenness must not exceed 0.5 mm/0.02 in!

Only use genuine MOBOTIX patch cables to guarantee the weatherproofness!

NOTE! Before mounting the camera, determine its ideal position and make sure that the field of view is not obstructed in any way. Once the camera has been mounted, you can fine-tune the image. If the monitored area changes or the camera has to be installed in a different location, you can exchange lenses.

Mounting the Camera Without Accessories

The MOBOTIX D71 can be easily installed directly on walls or ceilings. For installation without any accessories, you should first install a flush-mounted wall outlet, since the connectors on the rear of the camera need some space.

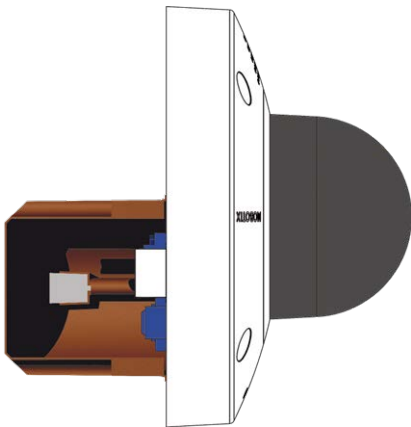


Fig. 6: Side view of MOBOTIX D71 over flush-mounted wall outlet

Before mounting the camera, make sure that a network connection with power supply according to the PoE Plus (802.3at-2009) standard is available at the mounting position (see [Connecting the Camera, p. 1](#)).

NOTE! Do not use the dowels if the installation surface is wood. Only use the screws to fasten the mounting plate directly on the surface. In order to facilitate screwing in wood, the positions should first be pre-drilled using a 2 mm drill bit, for example (drilling depth just slightly less than screw length).

Step by Step

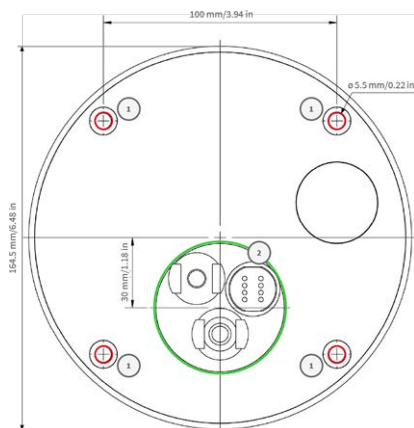


Fig. 7: Drilling template with holes for positioning the fastener screws (red circles) and for the flush-mounted wall outlet (green circle)

1. Mark the holes ① for drilling using the drilling template (see [Drilling Template as PDF](#)). When drilling, use a suitable 8 mm drill bit and drill holes at least 60 mm/1.2 deep.

NOTE! The drilling template also includes a circle ② marking the minimum size and position of the wall outlet, in addition to the drilling holes.

2. Fully push the dowels [M.4, p. 19](#) into the holes you drilled.
3. Establish the PoE network connection to the camera (see [Connecting the Camera to the Network, p. 56](#)).
4. Mount the camera using the supplied pan head screws [M.5, p. 19](#).

Mounting with the On-Wall Set



CAUTION! Before mounting the camera, make sure that a network connection with power supply according to the PoE Plus (802.3at-2009) standard is available at the mounting position (see [Connecting the Camera to the Network](#)).

The On-Wall Set available in 0° and 10° inclinations allows you to easily mount the MOBOTIX D71 on the wall or ceiling. The camera remains IP65 weatherproof (dust-proof and resistant to water jets). The On-Wall Sets also cover RJ45 wall outlets and has ample space for additional modules (WiFi, batteries, etc.).

The 10° On-Wall Set is the right choice if you want to mount the MOBOTIX D71 on a wall with the lens pointing vertically downward (90° or more).

NOTE! If the 10° On-Wall Set is not used, then the angle of the lens may not exceed 80° for design-related reasons.

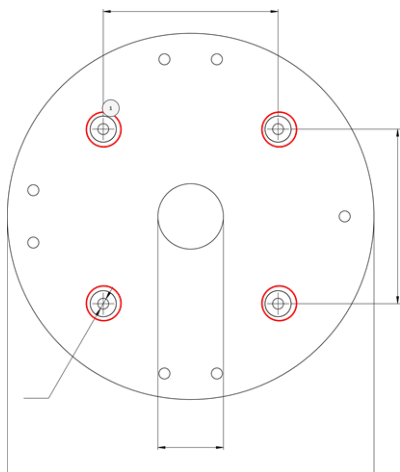
NOTE! Download the drilling template from the MOBOTIX website: www.mobotix.com > [Support](#) > [Download Center](#) > [Marketing & Documentation](#) > [Drilling Templates](#).

CAUTION! Always print or copy the drilling template at 100% of the original size!

NOTE! Do not use the dowels if the installation surface is wood. Only use the screws to fasten the mounting plate directly on the surface. In order to facilitate screwing in wood, the positions should first be pre-drilled using a 2 mm drill bit, for example (drilling depth just slightly less than screw length).

Step by Step

1. Mark the holes ① for drilling using the drilling template (see [Drilling Template, p. 11](#)). When drilling, use a suitable 8 mm drill bit and drill holes with at least 60 mm/1.2" depth.
2. Fully push the dowels [W.8, p. 20](#) into the holes you drilled.



3. If you use the 0° set, close the cable openings ② that are not needed with the enclosed closing plugs. Fix each of them in place from the inside using a small hexagonal nut.



4. Fit the cable gland ③ to the cable opening of the On-Wall Set such that the black rubber seal is on the outside. Fix it in place from the inside using a small hexagonal nut.



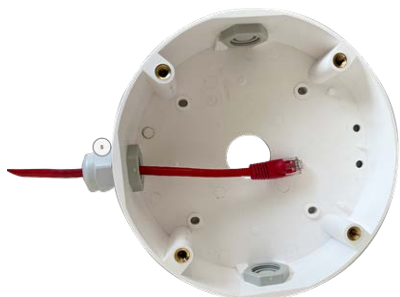
Mounting

Mounting Options

5. Mount the On-Wall Set (without the camera) at the intended position using the Torx screws from the accessories ④ .



6. Attach the counter nut ⑤ to the network cable, pass it through the seal from the outside and tighten the nut. The network cable is now screwed into the On-Wall Set, weatherproof.



7. Connect the on-site network cable with the camera patch cable using a standard connector. Excess cable can be stored easily within the On-Wall Set (see [Connecting the Camera, p. 53](#)).
8. Remove the rubber plugs from the front of the camera.



9. Using the supplied Allen wrench [W.2, p. 20](#), secure the camera to the bottom plate of the On-Wall Set with four Allen screws [W.5, p. 20](#) and one washer [W.6, p. 20](#) each.

10. Push the rubber plugs [M.7, p. 19](#) into the screw holes of the camera.
11. Connect the camera to the PoE network connection of the building (see [Connecting the Camera to the Network, p. 56](#)).

Mounting with the In-Ceiling Set



CAUTION! Before mounting the camera, make sure that a network connection with power supply according to the PoE Plus (802.3at-2009) standard is available at the mounting position (see [Connecting the Camera to the Network](#)).

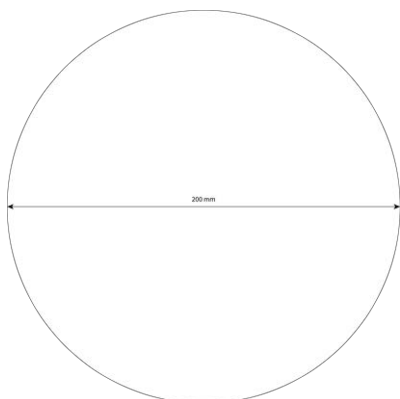
With the In-Ceiling Set, you can discreetly install the MOBOTIX D71 Camera in the ceiling with the connections and most components hidden inside the ceiling. The In-Ceiling Set is particularly suitable if the D71 is to be installed in suspended ceilings of indoor spaces with customer or public traffic (e.g. hotels, restaurants, banks, retail stores, public buildings, etc.).

NOTE! Download the drilling template from the MOBOTIX website: www.mobotix.com > [Support](#) > [Download Center](#) > [Marketing & Documentation](#) > [Drilling Templates](#).

CAUTION! Always print or copy the drilling template at 100% of the original size!

Step by Step

1. Cut a round hole with a diameter of 200 mm into the ceiling (see [Drilling Template, p. 11](#)).



2. Run the network cable above the suspended ceiling and ensure that enough cable slack is available
3. Remove the rubber plugs ① from the front of the camera.



4. Secure the camera in the In-Ceiling Set② using the four supplied Allen screws [I.3, p. 21](#) and one washer [I.4, p. 21](#) each.



5. Connect the on-site network cable with the camera patch cable using a standard connector. Excess cable can be stored easily within the In-Ceiling Set (see [Connecting the Camera, p. 53](#)).

6. Place the In-Ceiling Set in the ceiling opening and tighten the dovetail guides clockwise using a Phillips screwdriver.



7. Push the rubber plugs [M.7, p. 19](#) into the screw holes of the camera.
8. Connect the camera to the PoE network connection of the building (see [Connecting the Camera to the Network, p. 56](#)).

Mounting with the Wall Mount

CAUTION! Before mounting the camera, make sure that a network connection with power supply according to the PoE Plus (802.3at-2009) standard is available at the mounting position (see [Connecting the Camera to the Network](#)).

The Wall Mount allows you to easily mount the MOBOTIX D71 to walls or extensions, indoors and outdoors. The camera remains IP65 weatherproof (dust-proof and resistant to water jets). The Wall Mount also covers RJ45 wall outlets and has ample space for additional modules (WiFi, batteries, etc.).

Before mounting the MOBOTIX D71 with the Wall Mount, drill the holes for the fixtures. You can use the supplied drilling template (see [Drilling Template as PDF](#)).

NOTE! Download the drilling template from the MOBOTIX website: www.mobotix.com > Support > Download Center > Marketing & Documentation > Drilling Templates.

CAUTION! Always print or copy the drilling template at 100% of the original size!

NOTE! Do not use the dowels if the installation surface is wood. Only use the screws to fasten the mounting plate directly on the surface. In order to facilitate screwing in wood, the positions should first be pre-drilled using a 2 mm drill bit, for example (drilling depth just slightly less than screw length).

Step by Step

1. Mark the holes ① for drilling using the drilling template (see [Drilling Template, p. 11](#)). When drilling, use a suitable 8 mm drill bit and drill holes with at least 60 mm/1.2" depth.

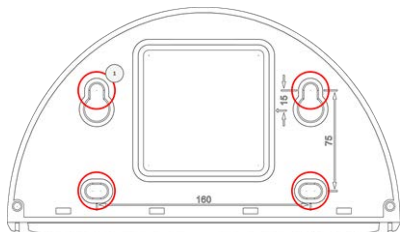


Fig. 8: Wall Mount with holes for positioning the fastener screws

2. Fully push the dowels [W.8, p. 20](#) into the holes you drilled.
3. Remove the protective foil from the black wall sealing [W.10, p. 20](#) and apply it to the back of the Wall Mount (the surface must be clean and free of grease).



Fig. 9: Wall sealing on the back of the Wall Mount

4. Pass the network cable through the large square opening into the Wall Mount.
5. Use the supplied hex head screws [W.7, p. 20](#) to install the Wall Mount at the intended position.
6. Remove the rubber plugs from the front of the camera.



7. Prepare the on-site network cable for connection with the camera patch cable using a standard connector. Excess cable can be stored easily within the Wall Mount (see [Connecting the Camera, p. 53](#)).

8. Using the supplied Allen wrench [W.2, p. 20](#), secure the camera to the bottom plate of the Wall Mount with two long Allen screws [W.5, p. 20](#) and one washer [W.6, p. 20](#) each.



9. Connect the camera to the PoE network connection of the building (see [Connecting the Camera to the Network, p. 56](#)).
10. Install the bottom plate [W.2, p. 20](#) with the camera in the Wall Mount:
- Use two short Allen screws [W.4, p. 20](#) with one washer [W.6, p. 20](#) each to secure the camera on the rear side of the bottom plate ① .
 - Use two long Allen screws [W.5, p. 20](#) with one washer [W.6, p. 20](#) each to secure the camera on the front side of the bottom plate ② .



11. Push the rubber plugs [M.7, p. 19](#) into the screw holes of the camera (① and ② in the figure above).

Mounting on a Corner (Corner/Pole Mount)

CAUTION! Before mounting the camera, make sure that a network connection with power supply according to the PoE Plus (802.3at-2009) standard is available at the mounting position (see [Connecting the Camera to the Network](#)).

Dimensions MOBOTIX D71 Corner/Pole Mount

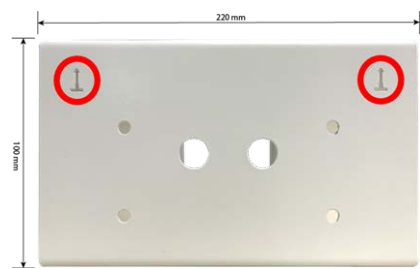


Fig. 10: Dimensions MOBOTIX D71 Corner/Pole Mount – front view

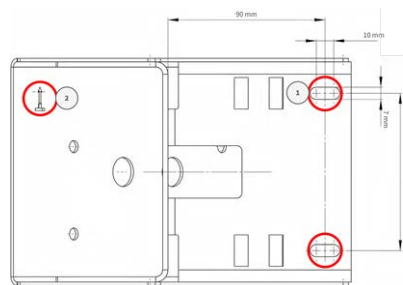
NOTE! When installing, the arrows of the mount must point upwards.



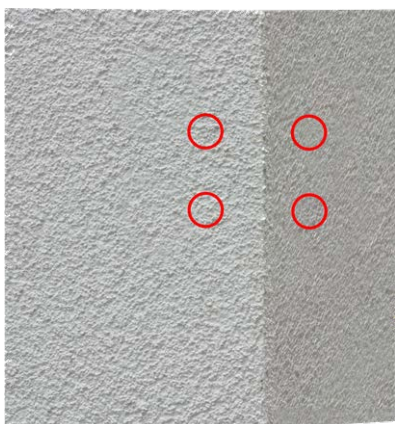
Fig. 11: Dimensions MOBOTIX D71 Corner/Pole Mount– side view

Step by Step

1. Mark the four screw anchor holes ① on the corner of the building using the drilling template. Make sure that the arrows ② on the Corner/Pole Mount point upwards.



2. Drill the holes with a 10 mm wall drill then place the included dowels in the drilled holes.



3. Push the supplied network cable through one of the holes ① .

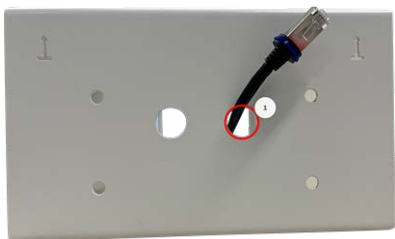


Fig. 12: Prepare the network cabling

4. Screw the Corner/Pole Mount into place on the corner of the building using the wood screws and washers.



5. Proceed by mounting the Wall Mount to the Corner/Pole Mount as described in [Mounting with the Wall Mount, p. 47](#).

Mounting on a Pole (Corner/Pole Mount)

CAUTION! Before mounting the camera, make sure that a network connection with power supply according to the PoE Plus (802.3at-2009) standard is available at the mounting position (see [Connecting the Camera to the Network](#)).

NOTE! The pole should have a diameter between 60 and 180 mm.

For dimensions of the Corner/Pole Mount, please refer to [Dimensions MOBOTIX D71 Corner/Pole Mount](#), p. 50.

Step by Step

1. Guide the supplied stainless steel straps along the cutouts in the Corner/Pole Mount as shown in the figure.



Fig. 13: Prepare the pole mount with steel straps

2. Tighten the stainless steel straps on the Corner/Pole Mount with a screwdriver. If necessary, the ends of the straps can be cut off.



Fig. 14: Tighten the straps

3. Push the supplied network cable through one of the holes ①.

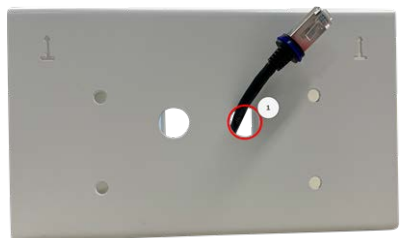


Fig. 15: Prepare the network cabling

4. Proceed by mounting the Wall Mount to the Corner/Pole Mount as described in [Mounting with the Wall Mount](#), p. 47.

Connecting the Camera

All connections to the camera (network, MiniUSB, inputs/outputs) can be made directly on the camera. No further accessories are required for this. A PoE switch provides the camera's power supply.

Connecting an USB-C Device

The camera has a USB-C port that allows external storage media to be connected, for example.

1. To uncover the USB-C port, remove the bayonet catch ① by rotating it counter-clockwise, then remove the blue rubber plug.



2. Plug the USB-C connector into the port and press in firmly until the blue sealing ring clicks into place.

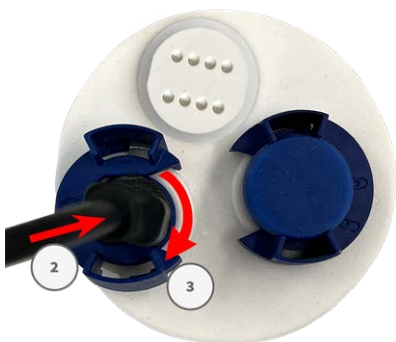


Fig. 16: Press the plug in firmly until the blue sealing ring clicks into place

3. Attach the bayonet catch ③ by rotating it clockwise.
4. Connect the USB-C device.

Connecting I/O Devices

The camera has an I/O connection terminal allows multiple I/O devices to be connected.

CAUTION! Before you proceed pay attention to the intended use or polarity of the slots (see [Assignment of I/O Sockets, p. 55](#)).

1. To uncover the I/O connectors, remove the white dome cap ① by rotating it counter-clockwise.



2. Insert the cables of the I/O devices through the openings provided in the dome cap.

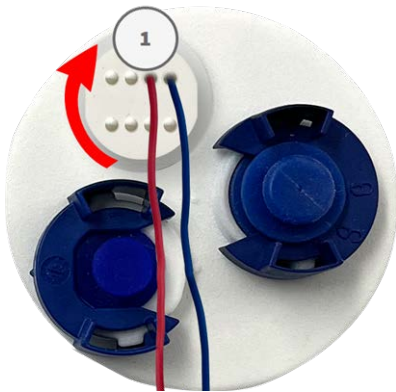


CAUTION! Before you proceed pay attention to the intended use or polarity of the slots (see [Assignment of I/O Sockets, p. 55](#)).

3. Plug the connection wires of the respective units into the corresponding slots ① of the connection terminal and check their tight fit.

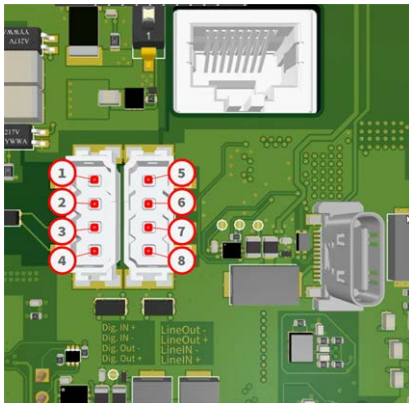


4. Attach the white dome cap ① by rotating it clockwise.



Assignment of I/O Sockets

The MOBOTIX D71 has an I/O connection terminal allows multiple I/O devices to be connected.



The slots are assigned as follows:

- | | |
|-----------------|--------------|
| ① Digital IN + | ⑤ Line OUT - |
| ② Digital IN - | ⑥ Line OUT + |
| ③ Digital OUT - | ⑦ Line IN - |
| ④ Digital OUT + | ⑧ Line IN + |

Connecting the Camera to the Network

CAUTION!

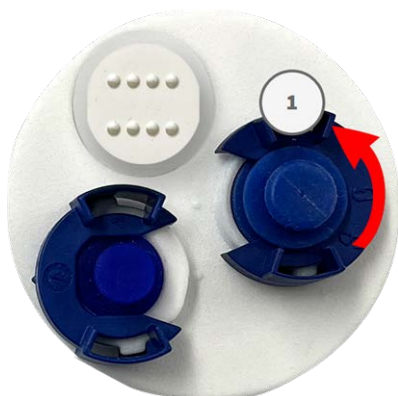
- The PoE switch must provide Class 4 according to PoE Plus (802.3at-2009) as well as the 100/1000 Mbps Ethernet interface of the camera.
- It is highly recommended to use an uninterruptible power supply (UPS) for the switch.
- The maximum length of the network cable for remotely supplying power is 100 m (300 ft).



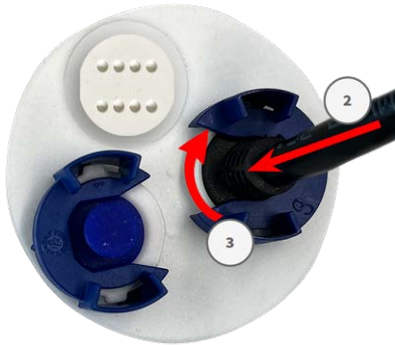
Fig. 17: Power supply using PoE switch according to PoE Plus (802.3at-2009).

Connecting the camera to the network

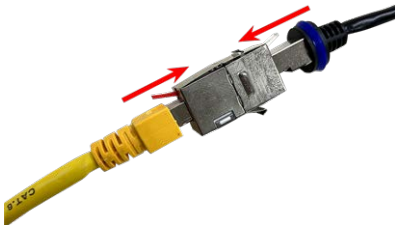
1. To uncover the RJ45 network connector, remove the bayonet catch ① by rotating it counter-clockwise and pull it off with the blue rubber plug.



2. Plug the supplied patch cable ② into the network connector and press the plug in firmly until the blue sealing ring clicks into place.



3. Attach the bayonet catch ③ by rotating it clockwise.
4. Connect the supplied patch cable 1.6, p. 18 with the PoE network connection of the building using a standard connector.



Operating the Camera

This section contains the following information:

| | |
|-------------------------------|-----------|
| Getting Started | 60 |
| Network Settings | 60 |

Getting Started

You can use the MOBOTIX D71 with any current browser – or with MxManagementCenter.

You can download MxManagementCenter free-of-charge from www.mobotix.com > [Support](#) > [Download Center](#) > [Software Downloads](#).

Procedure

1. **Connect the camera to the network.** The network cable will also provide power to the camera (see [Connecting the Camera to the Network](#)).
2. **Establish a connection to the camera and adjust the network settings if required:** By factory default, MOBOTIX cameras are booting as DHCP client with an additional fixed IP address in the 10.x.x.x range (e.g., 10.16.0.128). Local computer networks usually have IP addresses in the 172 or 192 ranges. Depending on whether a DHCP server is present on the local network or if the network has been set up to use fixed IP addresses, there are several possibilities for establishing a connection to the camera and to change its [Network Settings](#), p. 60:
 - **Network with dynamic IP addresses**

Using a browser: If you know the IP address that the DHCP server assigned to the camera, simply enter that address in the browser address bar to directly connect to the camera

Using MxManagementCenter: With MxManagementCenter, you can show and integrate the camera without having to know its current IP address.
 - **Network with static IP addresses**

In order to access the camera, it must have an IP address within the range of the local network. To set the camera's network parameters, you can use one of these methods:

Manually using a web browser: You may have to adjust the network settings of your computer.
 - **Automatically using MxManagementCenter:** The camera is displayed in MxManagementCenter although the IP address is not part of the local network, allowing you to reconfigure its settings.
3. **Configure camera:** You can use the user interface of the camera in a browser or in MxManagementCenter.

Network Settings

Once the camera has been connected to the network, you need to set up the MOBOTIX camera's network interface accordingly. This step involves setting up and checking the network parameters of the camera. If your network has an active DHCP server or if it is already running on a 10.x.x.x network with a 255.0.0.0 network mask) you do not need to change the camera's network parameters. You can directly access the

camera. If neither your network nor your computer use an IP address in the 10.x.x.x network (e.g. a 192.168.x.x or 172.x.x.x network), you should follow one of the following methods for changing the camera's network parameters:

- Manual setup
- Automatic setup using MxManagementCenter

NOTE! For the following examples, we will use a camera with the factory IP address 10.16.0.99. Replace this IP address with the IP address of your camera. You will find this address on a small sticker on the camera. Make sure that the IP addresses used in the following examples are not used by any other devices on your network.

Windows

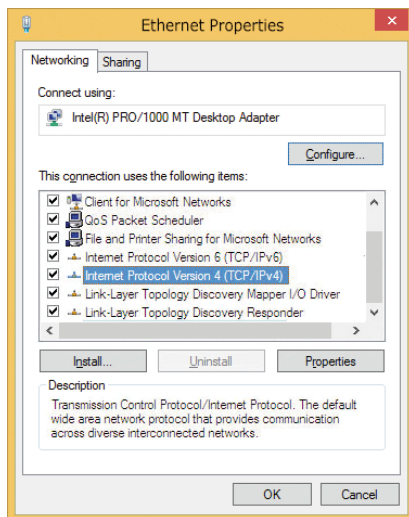


Fig. 18: Network settings on Windows machines

1. Open the Windows **Control Panel > Network and Internet > Network and Sharing Center > Change Adapter Settings > Ethernet**.
2. Right-click on the relevant network adapter and select **Properties**.

3. Open the properties of **Internet Protocol Version 4 (TCP/IPv4)**.

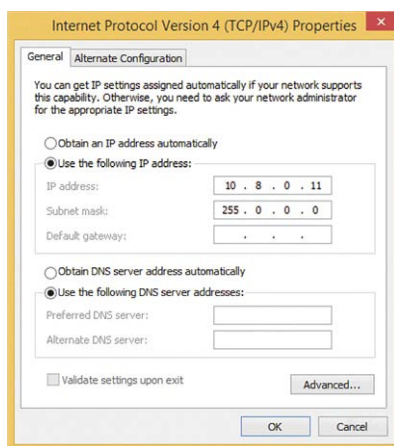


Fig. 19: Properties of Internet Protocol V4

4. Activate **Use the following IP-address**. Enter an IP address in the 10.x.x.x range in this field (e.g. 10.16.0.11).
5. Click on **OK** to apply the settings.

Linux/Unix

1. Open a terminal as `root` user.
2. Enter the following command: `ifconfig eth0:1 10.16.0.11`.
3. The computer now has the additional IP address 10.16.0.11.

macOS

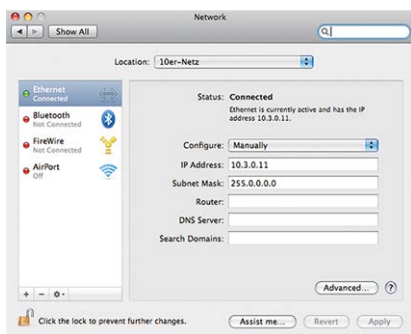


Fig. 20: Network settings on macOS machines

1. Open **System Settings > Network**.
2. Click on **Ethernet** and in the **Configuration** field, select the *Manual* list entry and enter an IP address in the 10.x.x.x IP address range (e.g., 10.16.0.11).
3. Click on **Apply** to apply the settings.

MOBOTIX Camera in the Browser

Quick Installation
Ethernet Interface

Assign a unique IP address and the network mask to the camera. These values consist of four numbers (0 to 255) separated by dots. They define which other IP addresses can be reached directly on your LAN. In order to access the camera from your computer via LAN, your computer needs an IP address on the same subnet as the camera.

If unsure, ask your system administrator for a valid and unique IP address and the network mask of your subnet.

Camera IP Address:

Camera Network Mask:

Fig. 21: Network settings in the web interface of the camera

1. Use a web browser to access the web interface of the MOBOTIX camera and enter the factory IP address (e.g. 10.16.0.99).
2. Click on the **Admin Menu** button in the user interface of the camera. The Quick Installation automatically starts after entering the access credentials of the admin user.

NOTE! Factory access credentials:

User name: admin

Password: meinsm

NOTE! You can also run the Quick Installation later on (**Admin Menu > Network Configuration > Quick Installation**; see Reference Manual).

3. Enter the network parameters of the camera in the course of the quick installation.

NOTE! You can also change the network parameters later on by running **Admin Menu > Network Configuration > Quick Installation**.

4. Reboot the camera to apply the network settings.

MOBOTIX Camera in MxManagementCenter

MxManagementCenter is a video management software for setting up and using the entire video surveillance system that provides a range of functions for different tasks and user groups. You can download the newest release of MxManagementCenter from the MOBOTIX website (www.mobotix.com > Support > Download Center > Software Downloads, MxManagementCenter section).

NOTE! Please refer to the MxManagementCenter help for more information.

Procedure

When starting MxManagementCenter for the first time, the configuration wizard opens and automatically starts searching for MOBOTIX cameras. The number of found cameras is shown as a counter next to the **Add Devices** icon. This number is updated automatically if the number of MOBOTIX cameras on the network has changed (i.e., by connecting new/disconnecting existing cameras).

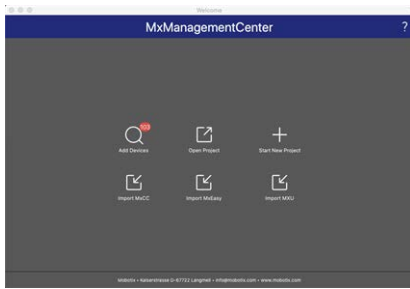


Fig. 22: Start screen of the MxManagementCenter

1. Click on **Add Devices**. The cameras are displayed either in a list or as tiles. Use the List and Tile buttons to change the display mode.

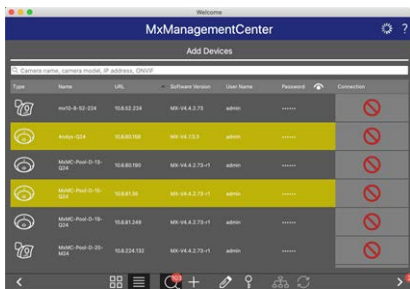




Fig. 23: Cameras as list

The application automatically monitors and displays the operating status of all cameras using corresponding icons.

EXAMPLE:

-  The camera is not in the same subnet as the computer.
-  The user name and password of the camera are not known.

NOTE! Using the Bonjour service ([en.wikipedia.org/wiki/Bonjour_\(software\)](https://en.wikipedia.org/wiki/Bonjour_(software))), the application finds not only MOBOTIX cameras on the same subnet, but also in other subnets. Normally, you would not be able to establish any connection to cameras in a different network or subnet.

NOTE! This is the case, for example, if you are integrating cameras into a network without DHCP server (i.e. with fixed IP addresses) and the IP address range is different from the 10.x.x.x range supported by the cameras in addition to DHCP.

MxManagementCenter can automatically configure such a camera so that it is "integrated" into your existing network.


2. Select the camera you want to set up and click on **Edit Network Settings**  at the bottom of the program window. The **Change Network Settings for Selected Devices** dialog opens.



Fig. 24: Change network settings for selected devices

3. Enter the IP address and the subnet mask of the selected camera.

NOTE! The IP addresses of the other cameras are automatically incremented by 1.

4. Click on **Apply** to apply the settings.

NOTE! For more information on this feature, please read the MxManagementCenter online help or the Tutorial (see www.mobotix.com > Support > Download Center > Documentation > Brochures & Guides > Tutorials).

Camera Software in the Browser

The integrated software of the MOBOTIX D71 features a multitude of functions, such as video motion detection, long-term recording, alarm messaging and video IP telephony. Especially remarkable are the AI-based analytics features and the possibility to install third-party apps on the camera. Thanks to the virtual PTZ features, you can continuously zoom into or out of the live image using either the mouse wheel or a joystick.

When recording images or video sequences, you can choose to store either the visible image area of the live image or the full sensor image. This also allows examining the parts of an image or video that had not been visible in the real-time image section on display at the time of the recording.

Instead of using a web browser, you can also download the free MxManagementCenter from the MOBOTIX website (www.mobotix.com > Support), which allows displaying multiple cameras on one monitor, allows for comfortably searching and evaluating the alarm video clips with audio and provides alerting features. For mobile iOS and Android devices, the free-of-charge MOBOTIX MOBOTIX LIVE App is available.

This section contains the following information:

| | |
|---|-----------|
| Access the camera's website in the browser | 68 |
| Basic Settings | 68 |

- **Admin Menu:** This menu contains the basic configuration dialogs of the camera (e.g. passwords, interfaces, software update).
- **Setup Menu:** This menu contains the dialogs for configuring the image, event and recording parameters. Some of these settings can be changed using the corresponding Quick Controls in the Live screen.

NOTE!

For more information, consult the Reference Manual of the camera.

Maintenance

This section contains the following information:

| | |
|---|-----------|
| Replacing the microSD card | 72 |
| Cleaning the Camera | 73 |

Replacing the microSD card

CAUTION! To remove, insert or exchange the microSD card, the camera must be disassembled.

Before removing the microSD card, deactivate the recording function and restart the camera. Non-observance can lead to data loss!

The microSD card must not be write-protected!

Do not touch the circuit board when exchanging the microSD card!

Step by step

1. **Deactivate storage:** If storage on microSD card is still activated deactivate it in the cameras web interface: **Admin Menu > Storage on external file server / flash media**, then reboot the camera .
2. **Open the screw cap:** Using a coin or wide screwdriver, carefully turn the screw cap ① on the back of the camera to the left and remove it.



3. **Unlock the microSD card holder:** Carefully flip up the metal cover ② of microSD card (e.g. with a fingernail).



4. **Remove the microSD card**
5. **Insert microSD card:** Insert the new microSD card in the holder and close the metal cover with light pressure until it snaps in.
6. **Close the screw cap:** Reinsert the screw cap and turn it carefully to the right using a wide screwdriver.
7. **Activate storage:** If the microSD card already is formatted with MxFFS has been inserted, storage can be activated in Admin Menu > Storage on External File Server/Flash Device. After rebooting the camera, recording is activated automatically. .

Cleaning the Camera

Clean the camera housing using a mild alcohol-free detergent without abrasive particles.

To protect the camera from damage, only use the supplied mounting supplies (see [Mounting Supplies: Scope of Delivery, p. 1](#)).



EN_10/22

MOBOTIX AG • Kaiserstrasse • D-67722 Langmeil • Tel.: +49 6302 9816-103 • sales@mobotix.com • www.mobotix.com

MOBOTIX is a trademark of MOBOTIX AG registered in the European Union, the U.S.A., and in other countries. Subject to change without notice. MOBOTIX do not assume any liability for technical or editorial errors or omissions contained herein. All rights reserved. © MOBOTIX AG 2021