

Pole Mount Installation

MOBOTIX MOVE Bullet Cameras can be mounted with the optional Mx-M-BC-P pole mount. The items and tools needed for installation are listed as follows.

Mx-M-BC-P Package Contents:

- Pole Mount Junction Box
- M4 x 12MM Mechanical Screw x5
- Stainless Steel Ring x2



NOTE: The supplied stainless-steel rings are applicable to poles with the diameter from 70 to 180MM.

Items Needed:

- Ethernet Cable
- Power Cable (necessary if PSE is not available)
- Alarm Cable (optional)
- Audio Cable (optional)

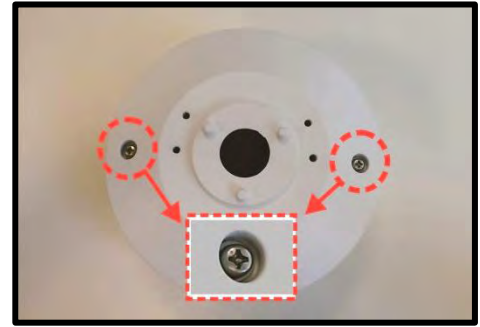
Tools Needed:

- Drill
- Screwdrivers (Allen, flat)
- Spanner

Follow the steps below to install the BulletCamera with the Pole Mount:

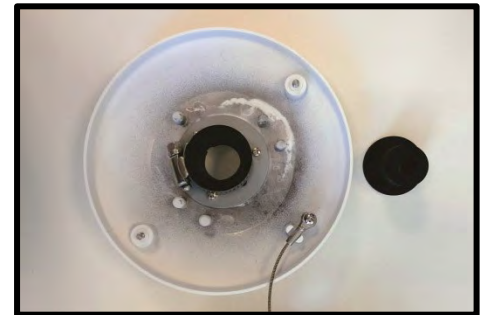
Step 1:

Loosen the two screws indicated in the right figure with the screwdriver and detach the Pole Mount Junction Box cover.



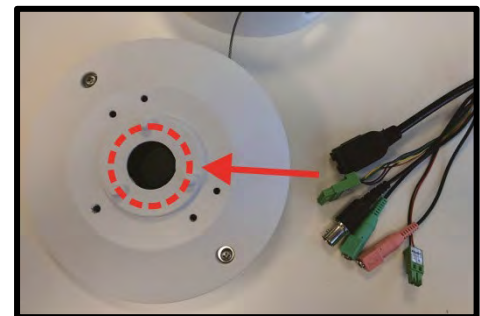
Step 2:

Remove the rubber plug from the cable entry hole of the Pole Mount Junction Box cover.



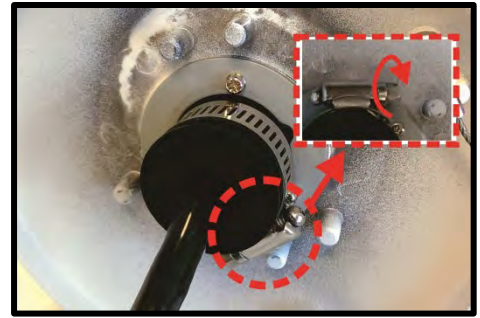
Step 3:

Thread the connectors of the All-in-One cable of the camera one by one through the cable entry hole.



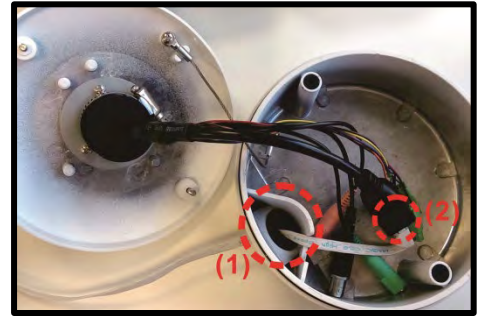
Step 4:

Insert the rubber plug back to the cable entry hole and use a flathead screwdriver to tighten the stainless steel ring by turning the knob clockwise. Make sure there's no gap between the All-in-One cable and the cable entry hole.



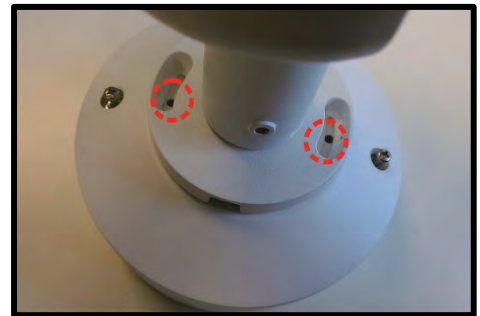
Step 5:

(1) Connect the required cables, e.g. Ethernet cable, to the connectors of the All-in-One cable through the cable entry hole. (2) Then coat the joints between the connectors and the cables with silicone gel.



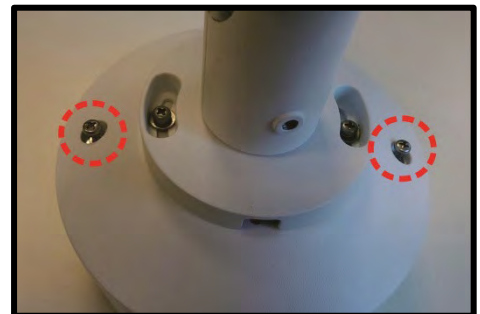
Step 6:

Arrange the All-in-One cable orderly, and put back the Pole Mount Junction Box cover. Align the two screw holes of the camera with the screw holes on the Pole Mount Junction Box cover, and fasten the camera with the M4 Mechanical Screws.



Step 7:

Adjust the position of Pole Mount Junction Box cover properly and fasten the two screws to tighten the cover.

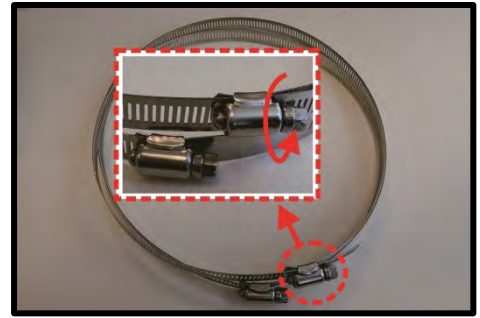


NOTE: When securing the Pole Mount Junction Box cover, user **MUST** align the two arrow marks with each other to ensure the cover is properly fixed.



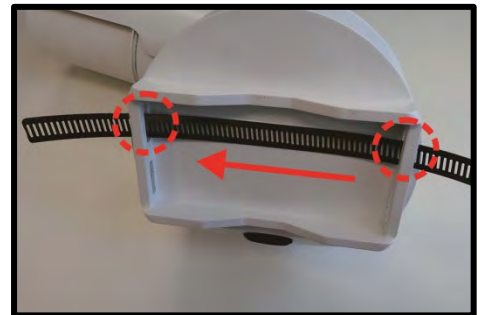
Step 8:

Loosen the knobs on the stainless steel rings by turning them counterclockwise with a flathead screwdriver.



Step 9:

Insert the stainless steel rings into the holes on the back of the Pole Mount Junction Box.



NOTE: When installing the Pole Mount Junction Box on the pole, the cable entry hole **MUST** be at the bottom side to ensure the waterproof function.



Step 10:

Place the Pole Mount Junction Box at the preferred installation location. Circle around the pole with the stainless steel rings and turn the knobs clockwise with a flathead screwdriver until the stainless steel rings are firmly tightened.

