

Wall-Mount Installation

MOBOTIX MOVE VandalDome cameras can be installed with the Mx-M-VD-W wall mount. Before starting the installation, please first fix the mounting accessory to the chosen place.

Mx-M-VD-W Package Contents:

- Pendant Cap
- Spring Washer-8 (x1)
- Pendant Tube Washer-8 (x1)
- Rubber Washer-8 (x1)
- M8x16 Hex Head Stainless Steel Screw (x1)
- M4x8 Mechanical Screw (x2)
- Rubber Ring (x1)

Items Needed:

- Ethernet Cable
- Power Cable (necessary if PSE is not available)
- Alarm Cable (optional)
- Audio Cable (optional)
- Cable Gland and Rubber Ring (necessary for waterproofing)

Tools Needed:

- Drill
- Screwdrivers (Allen, flat)
- Spanner
- Security Torx (supplied)



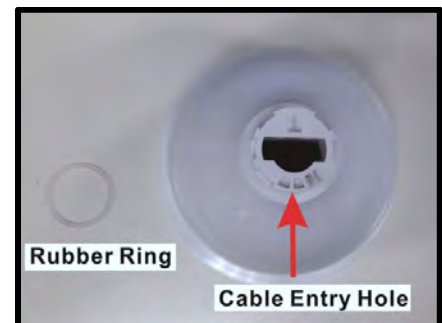
Follow the steps below to install the VandalDome with the Wall Mount:

Step 1: Run the Ethernet cable through the Wall mount. If there are other cables, such as power cable, alarm I/O cable or audio I/O cable, please also insert them through the pendant.



Step 2: Insert the other end of the cables through the cable entry hole on the wall. Align the screw holes on the Wall mount with the drilled holes and fasten the four M6 / M7 / M8 self-tapping screws.

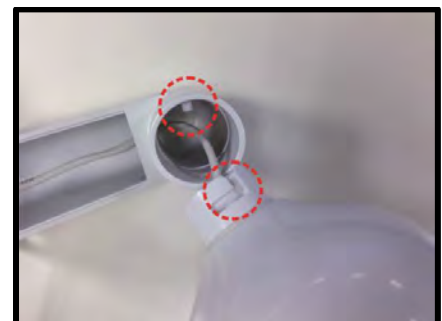
Step 3: Insert the supplied rubber ring to the cable entry hole of the pendant cap.



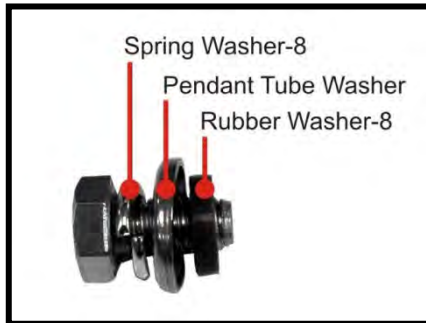
Step 4: Thread the Ethernet cable and other cables through the pendant cap as shown in the right figure.



Step 5: Fix the pendant cap to the Wall mount. Align the screw hole of the joint with the one on the pendent and fasten the pendant cap to the pendant clock-wisely.



Step 6: Insert the spring washer-8 followed by the pendant tube washer and the rubber washer-8 to the supplied M8x16 hex head stainless steel screw. Then fasten the screw.



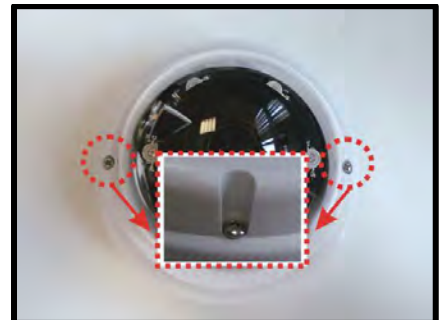
Step 7: Insert the rubber ring into the cable gland body from the top (as shown in the right figure).



Step 8: Loosen the thread-lock sealing nut of the cable gland. Then thread the Ethernet cable through the sealing nut and the gland body. If there are other cables, such as power cable, alarm I/O cable or audio I/O cable, please also insert them through the sealing nut and the gland body.



Step 9: Loosen the two security screws indicated in the right figure with the supplied security torx and open the dome cover.



Step 10: Run the cable through the cable gland and the back conduit entry of the camera housing. Connect the Ethernet cable to the RJ-45 connector of the camera. Fasten the gland body to the back conduit entry. Then tighten the thread-lock sealing nut to the gland body with a spanner. If necessary, seal the end of the thread-lock sealing nut with silicon.

Step 11: Loosen the two screws of the camera module, disconnect the Ethernet cable and remove the camera module from the camera housing.



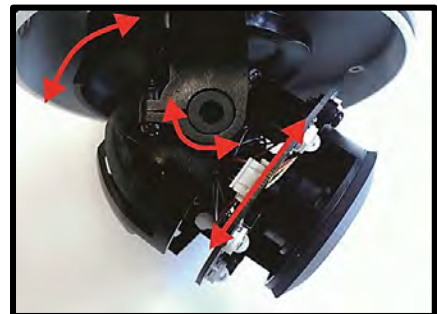
Step 12: Put the camera housing to the pendant cap and fasten the camera housing to the pendant cap with the supplied M4x8 mechanical screws.



Step 13: Place the camera module back to the camera housing. Align the two screw holes of the camera and fasten the two screws.

Step 14: Connect the Ethernet cable to the RJ-45 connector of the camera. For power, alarm I/O and audio I/O connections, please refer to the User's Manual.

Step 15: Adjust the pan / tilt / spin holders of the camera to point the lens at a suitable position for the desired camera view. Users can see the camera view by accessing the Camera Browser-viewer (refer to the User's Manual for further details).



Step 16: Attach the dome cover to the camera, align the arrow mark on the dome cover with the one on the camera housing and fasten the two security screws. And the pendant cap mount installation is completed.

