

Guideline

Visage Technologies Face Recognition App

© 2023 MOBOTIX AG

98,9%
John



Table of Contents

- Table of Contents** 2
- Before You Start** 3
 - Support 4
 - Safety Notes 4
 - Legal Notes 5
- About Visage Technologies Face Recognition App** 6
 - Smart Data Interface to MxManagementCenter 6
- Licensing Certified Apps** 10
 - License Activation of Certified Apps in MxManagementCenter 10
 - Managing Licenses in MxManagementCenter 14
- Activation of the Certified App Interface** 17
- Configuration of Visage Technologies Face Recognition App** 18
 - Detection 19
 - Enrollment 19
 - Recognition 20
 - Storing the Configuration 20
- MxMessageSystem** 22
 - What is MxMessageSystem? 22
 - Facts about MxMessages 22
- MxMessageSystem: Processing the automatically generated app event** 23
 - Checking Automatically Generated App Events 23
 - Action handling - Configuration of an action group 24
 - Action settings - Configuration of the camera recordings 26
- Advanced Configuration: Processing the meta data transmitted by apps** 28
 - Meta data transferred within the MxMessageSystem 28
 - Creating a Custom Message Event 29
 - Examples for message names and filter values of the Visage Technologies Face Recognition App 30

Before You Start

Support	4
Safety Notes	4
Legal Notes	5

Support

If you need technical support, please contact your MOBOTIX dealer. If your dealer cannot help you, he will contact the support channel to get an answer for you as quickly as possible.

If you have internet access, you can open the MOBOTIX help desk to find additional information and software updates. Please visit:

www.mobotix.com > [Support](#) > [Help Desk](#)



Safety Notes

- This product must not be used in locations exposed to the dangers of explosion.
- Do not use this product in a dusty environment.
- Protect this product from moisture or water entering the housing.
- Install this product as outlined in this document. A faulty installation can damage the product!
- This equipment is not suitable for use in locations where children are likely to be present.
- When using a Class I adapter, the power cord shall be connected to a socket-outlet with proper ground connection.
- To comply with the requirements of EN 50130-4 regarding the power supply of alarm systems for 24/7 operation, it is highly recommended to use an uninterruptible power supply (UPS) for backing up the power supply of this product.
- This equipment is to be connected only to PoE networks without routing to other networks.

Legal Notes

Legal Aspects of Video and Sound Recording

You must comply with all data protection regulations for video and sound monitoring when using MOBOTIX AG products. Depending on national laws and the installation location of the cameras, the recording of video and sound data may be subject to special documentation or it may be prohibited. All users of MOBOTIX products are therefore required to familiarize themselves with all applicable regulations and to comply with these laws. MOBOTIX AG is not liable for any illegal use of its products.

Declaration of Conformity

The products of MOBOTIX AG are certified according to the applicable regulations of the EC and other countries. You can find the declarations of conformity for the products of MOBOTIX AG on www.mobotix.com under **Support > Download Center > Marketing & Documentation > Certificates & Declarations of Conformity**.

RoHS Declaration

The products of MOBOTIX AG are in full compliance with European Unions Restrictions of the Use of Certain Hazardous Substances in Electrical and Electronic Equipment (RoHS Directive 2011/65/EC) as far as they are subject to these regulations (for the RoHS Declaration of MOBOTIX, please see www.mobotix.com, **Support > Download Center > Marketing & Documentation > Brochures & Guides > Certificates**).

Disposal

Electrical and electronic products contain many valuable materials. For this reason, we recommend that you dispose of MOBOTIX products at the end of their service life in accordance with all legal requirements and regulations (or deposit these products at a municipal collection center). MOBOTIX products must not be disposed of in household waste! If the product contains a battery, please dispose of the battery separately (the corresponding product manuals contain specific directions if the product contains a battery).

Disclaimer

MOBOTIX AG does not assume any responsibility for damages, which are the result of improper use or failure to comply to the manuals or the applicable rules and regulations. Our General Terms and Conditions apply. You can download the current version of the **General Terms and Conditions** from our website at www.mobotix.com by clicking on the corresponding link at the bottom of every page.

About Visage Technologies Face Recognition App

Face Recognition for Access Control

The app compares and recognizes faces based on encrypted image data stored in the camera (face descriptors, not real image files). The application has a 97 % hit probability for access applications. The app can be tested free of charge for 30 days and can be activated for a period of either 12 or 24 months. The app is ideally suited for the following industries: Utilities, Energy & Mining; Industry & Production; Government; Traffic & Transportation; Retail; Healthcare; Education & Education.

- App works as an extended security level for access controls, login terminals, transactions, etc.
- Works with camera online and offline
- Delivers quick and reliable results
- Configuration of the app also via MxManagementCenter (free Advanced Config license required)
- Can be used with all cameras of the MOBOTIX 7 system platform

CAUTION! Thermal sensors are not supported by this app.

Smart Data Interface to MxManagementCenter

This app has a Smart Data interface to MxManagementCenter.

With the MOBOTIX Smart Data System, transaction data can be linked to the video recordings made at the time of the transactions. Smart Data source can be e.g. MOBOTIX Certified Apps (no license required) or general Smart Data sources (license required) like POS systems or license plate recognition systems.

The Smart Data System in MxManagementCenter enables you to quickly find and review any suspicious activities. The Smart Data Bar and the Smart Data View are available for searching and analyzing transactions. The Smart Data Bar provides a direct overview of the most recent transactions (from the last 24 hours) and for this reason it is convenient to use it for reviews and searches.

NOTE! For information on how to use the Smart Data System, see the corresponding online help of the camera software and MxManagementCenter.

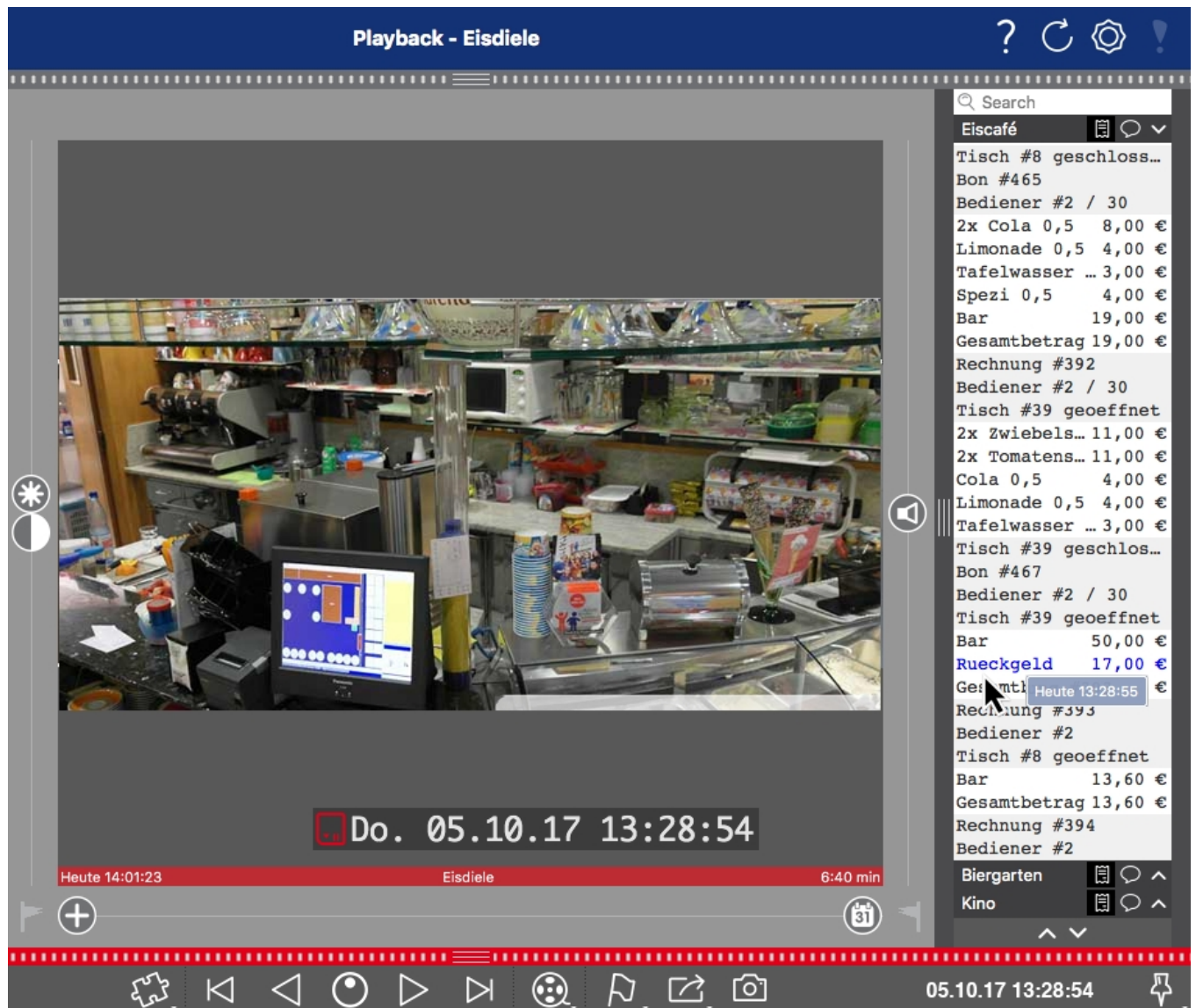


Fig. 1: : Smart Data Bar in MxManagementCenter (Example: POS System)

Product Information

Product Name	Visage Technologies Face Recognition App
Order Code	Mx-APP-VIS-FR-1 (one-year license) Mx-APP-VIS-FR-2 (two-year license)
Supported MOBOTIX Cameras	Mx-M73A, Mx-S74A
Minimum Camera Firmware	V7.0.4.x
MxManagementCenter Integration	<ul style="list-style-type: none"> min.MxMC v2.2 Advanced Config license required Smart Data Interface (Recognition Log)

Product Features

App Features	<ul style="list-style-type: none">■ Completely edge processed■ Face Detection & Recognition optimized for access control scenarios■ MOBOTIX events via MxMessageSystem■ White- and Black listing■ Recognition log
Maximum number of simultaneously detected / recognized faces	4
Maximum number of enrolled faces	1000
Meta Data / Statistic formats	JSON
Trial License	30-day trial license pre-installed
MxMessageSystem supported	Yes
Interfaces	compare supported camera's interfaces
MOBOTIX Events	Yes
ONVIF Events	Yes (Generic Message event)

Scene Requirements

Minimum face height	1/10 of live image resolution (e.g. 30px @ VGA)
Recommended installation height (camera)	165 – 210 cm
Maximum Horizontal Angle	10°
Maximum Tilt Angle	5°

Technical App Specifications

Synchronous / Asynchronous App	Asynchronous
Accuracy	Typ. 97% (considering scene & technical requirements)

Processed number of frames per second	Typ. 2 fps
Recognition time	< 1 s
Detection time	Typ. 80 ms
Size of individual face data set	1 kB

Licensing Certified Apps

The following licenses are available for the Visage Technologies Face Recognition App:

- **30-day test license** pre-installed
- **permanent commercial license**

The usage period begins with activation of the app interface (see [Activation of the Certified App Interface](#), p. 17)

NOTE! For buying or renewing a license, contact your MOBOTIX Partner.

NOTE! Apps are usually pre-installed with the firmware. In rare cases, apps must be downloaded from the website and installed. In this case see www.mobotix.com > **Support** > **Download Center** > **Marketing & Documentation**, download and install the app.

License Activation of Certified Apps in MxManagementCenter

After a test period commercial licenses must be activated for use with a valid license key.

Online-Activation

After receiving the activation IDs, activate them in MxMC as follows:

1. Select from the menu **Window > Camera App Licenses**.
2. Select the camera on which you want to license apps and click **Select**.

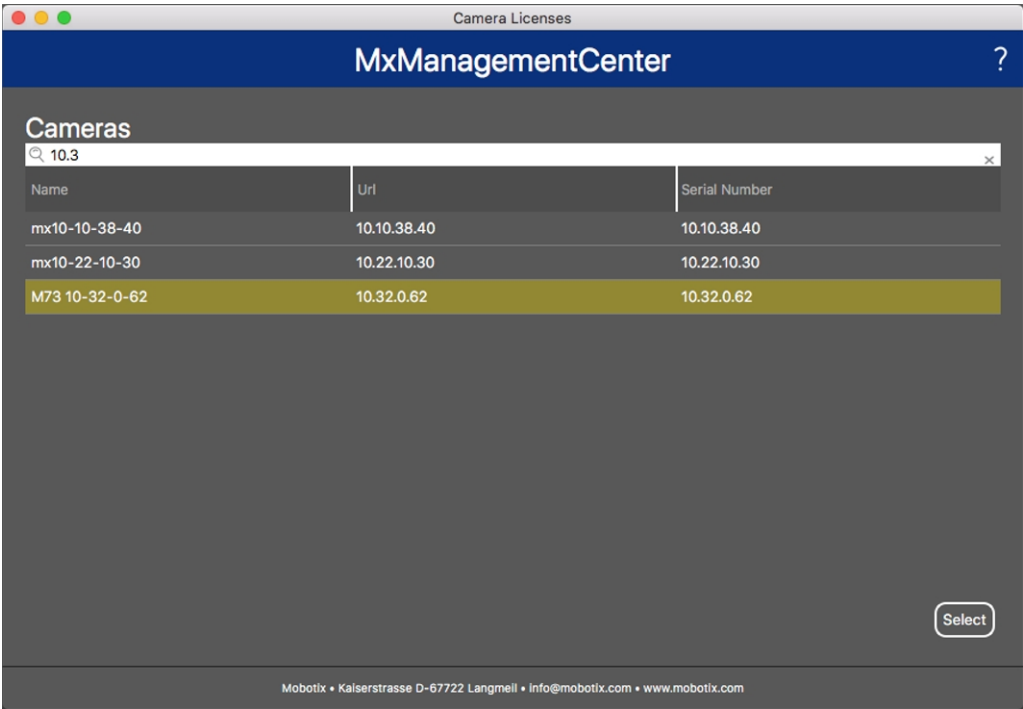


Fig. 2: Overview of Camera App Licenses in MxManagementCenter

NOTE! If necessary, correct the time set on the camera.

1. An overview of the licenses installed on the camera may be displayed. Click **Activate License**.



Fig. 3: Overview of the licenses installed on the camera

NOTE! If necessary, correct the time set on the camera.

2. Enter a valid Activation ID and specify the number of licenses to install on this computer.
3. If you want to license another product, click on . In the new row, enter the appropriate Activation ID and the number of licenses you want.
4. To remove a line click .

- When you have entered all Activation IDs, click **Activate License Online**. During activation, **MxMC** connects to the license server. This requires an Internet connection.

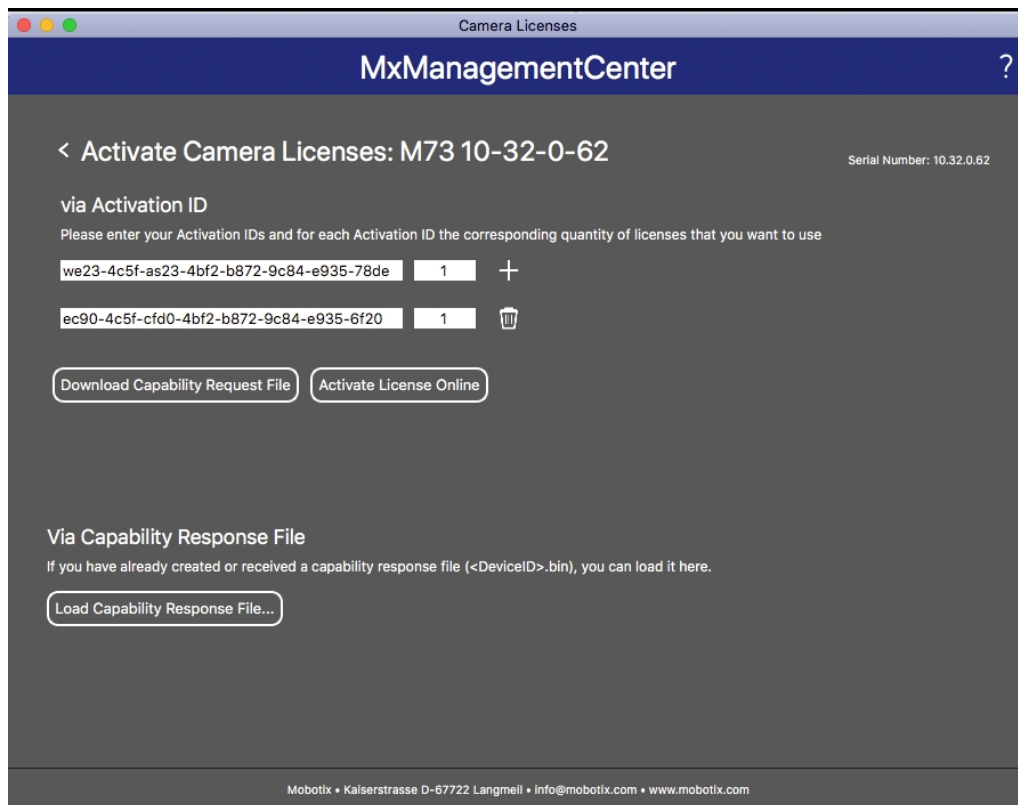


Fig. 4: Adding licenses

Successful activation

After successful activation, a new log in is required to apply the changes. Alternatively, you can return to license management.

Failed activation (missing internet connection)

If the license server cannot be reached, e.g. due to a missing internet connection, apps can also be activated offline. (see [Offline Activation](#), p. 12).

Offline Activation

For offline activation, the partner/installer from whom you purchased the licenses can generate a capability response (.bin file) on the license server to activate their licenses.

- Select from the menu **Window > Camera App Licenses**.
- Select the camera on which you want to license apps and click **Select**.

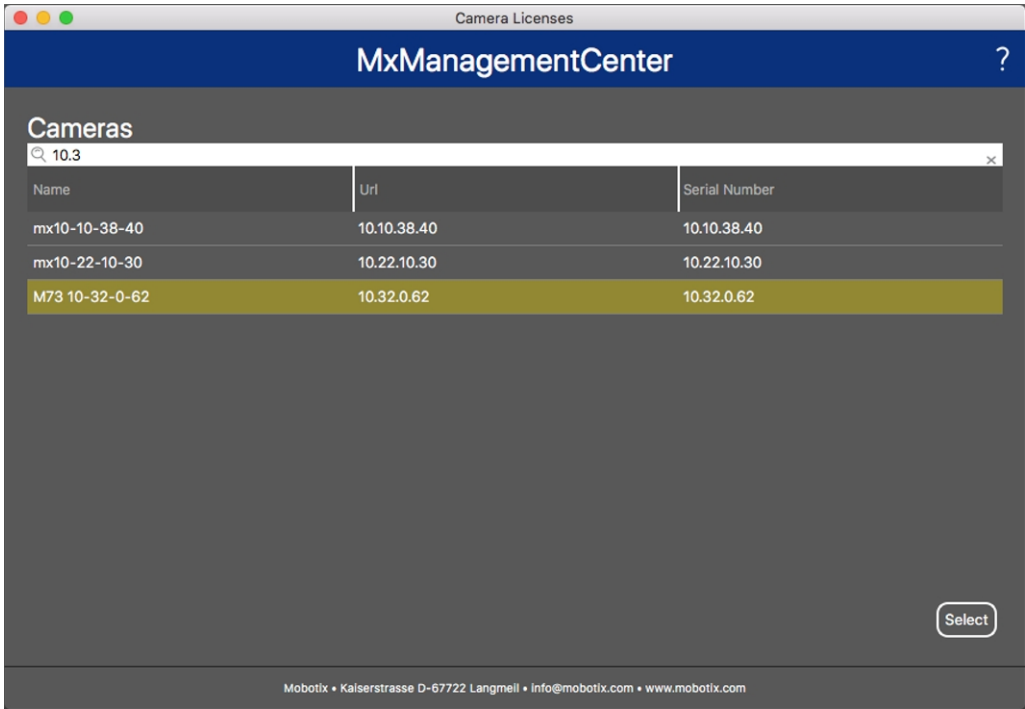


Fig. 5: Overview of Camera App Licenses in MxManagementCenter

NOTE! If necessary, correct the time set on the camera.

3. An overview of the licenses installed on the camera may be displayed. Click **Activate License**.

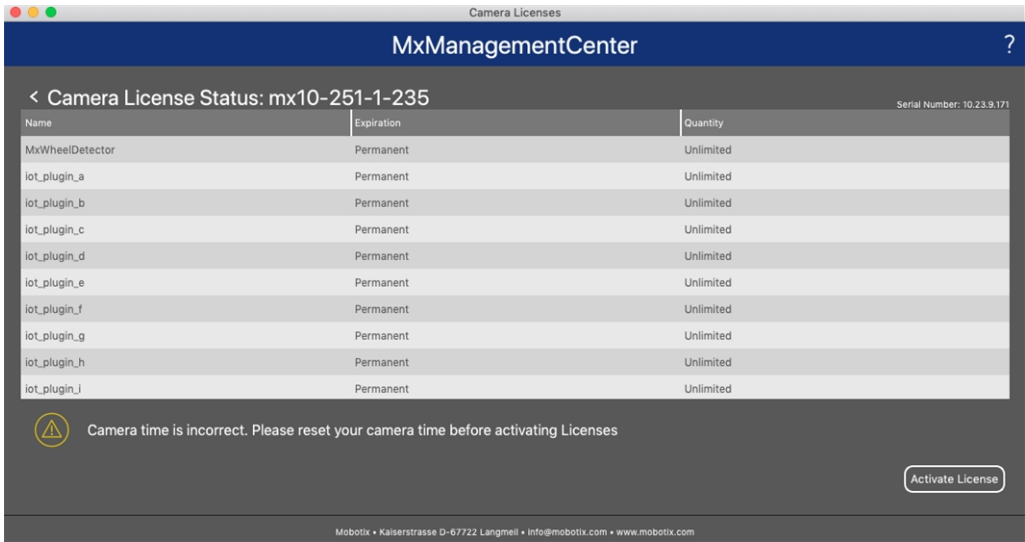



Fig. 6: Overview of the licenses installed on the camera

NOTE! If necessary, correct the time set on the camera.

4. Enter a valid Activation ID and specify the number of licenses to install on this computer.
5. If you want to license another product, click on . In the new row, enter the appropriate **Activation ID** and the number of licenses you want.

6. If necessary, click  to remove a line.
7. When you have entered all Activation IDs, click **Download Capability Request File (.lic)** and send it to your partner/installer.

NOTE! This file allows the partner / installer from whom you purchased the licenses to generate a capability response file (.bin) on the license server.

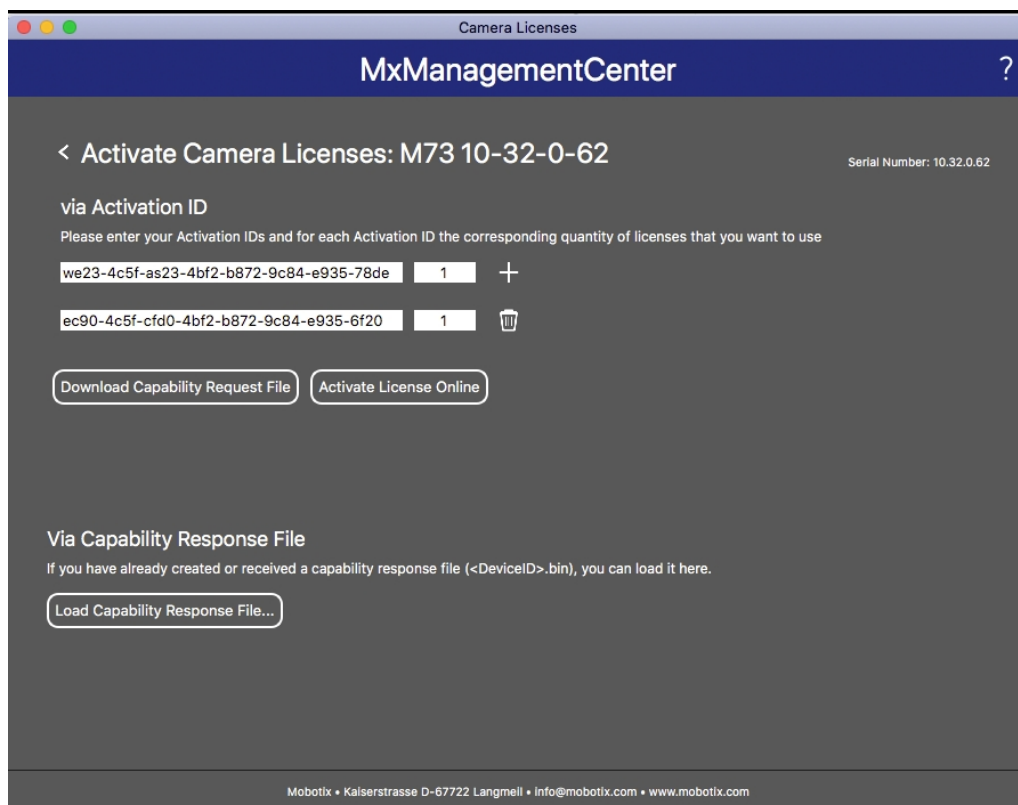


Fig. 7: Adding licenses

8. Click Load Capability Response File and follow the instructions.

Successful activation

After successful activation, a new log in is required to apply the changes. Alternatively, you can return to license management.

Managing Licenses in MxManagementCenter

In MxManagementCenter you can comfortably manage all licenses that have been activated for a camera.

1. Select from the menu **Window > Camera App Licenses**.
2. Select the camera on which you want to license apps and click **Select**.

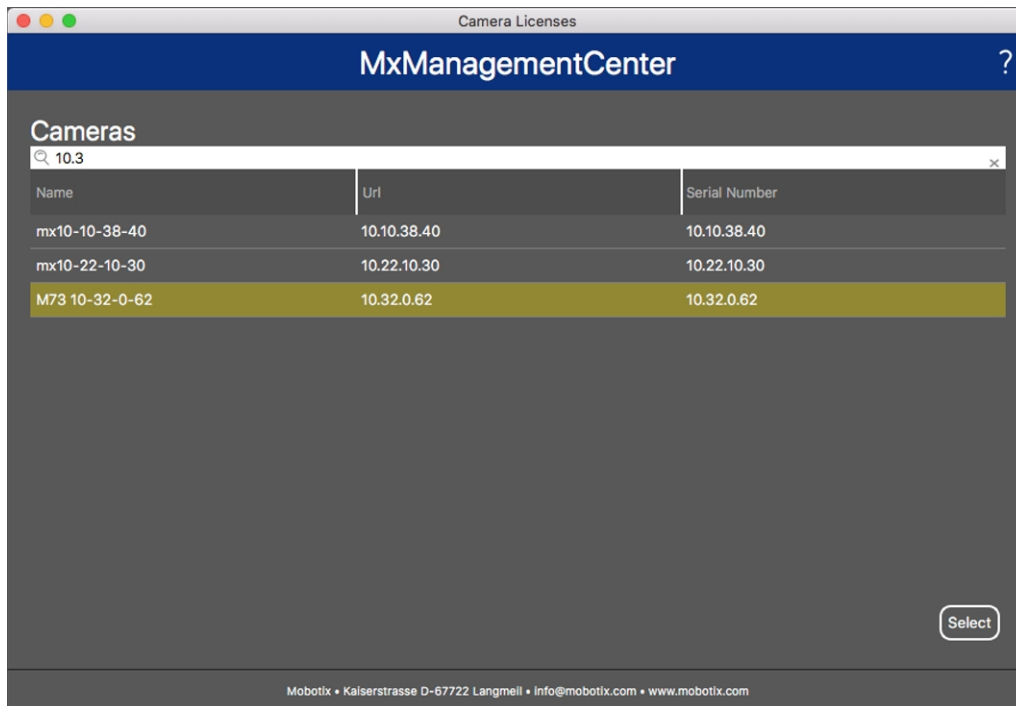


Fig. 8: Overview of Camera App Licenses in MxManagementCenter

An overview of the licenses installed on the camera may be displayed.

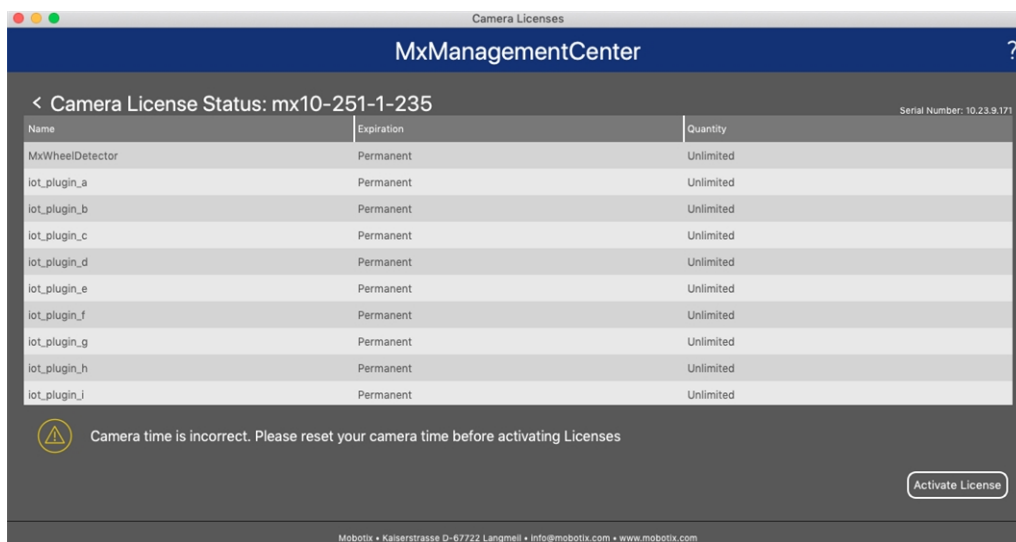


Fig. 9: Overview of the licenses installed on the camera

NOTE! If necessary, correct the time set on the camera.

Column	Explanation
Name	Name of the licensed app
Expiration	the time limit of the license
Quantity	Number of licenses purchased for a product.
Serial Number	Unique identification determined by MxMC for the device used. If problems occur during licensing, please have the device ID ready.

Synchronize licenses with server

When the program starts, there is no automatic comparison of the licenses between the computer and the license server. Therefore, click **Update** to reload the licenses from the server.

Update licenses

To update temporary licenses, click **Activate Licenses**. The dialog for updating/activating licenses opens.

NOTE! You need administrator rights to synchronize and update licenses.

Activation of the Certified App Interface

CAUTION!

The Visage Technologies Face Recognition App does not consider obscure areas defined for the live image. Therefore there is no pixelation in obscure areas while configuring the app and during image analysis by the app.

NOTE!

The user must have access to the setup menu ([http\(s\)://<Camera IP address>/control](http(s)://<Camera IP address>/control)). Therefore check the user rights of the camera.

1. In the camera web interface, open: **Setup Menu / Certified App Settings** ([http\(s\)://<Camera IP address>/control/app_config](http(s)://<Camera IP address>/control/app_config)).

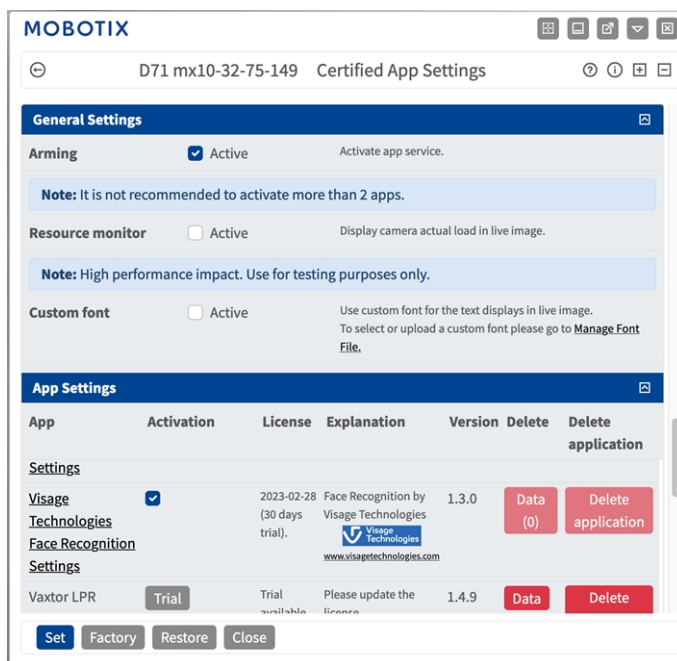


Fig. 10: Certified App: Settings

2. Under **General Settings** activate the **Arming** of the MOBOTIX interface (see screenshot).
3. Under **App Settings** check the **Active** option
4. Click on the name of the App to be configured to open the Apps user interface.
5. For configuration of the App see [Configuration of Visage Technologies Face Recognition App, p. 18](#).

Configuration of Visage Technologies Face Recognition App

NOTE! The user must have access to the setup menu ([http\(s\)://<Camera IP address>/control](http(s)://<Camera IP address>/control)). Therefore check the user rights of the camera.

1. In the camera web interface, open: **Setup Menu / Certified App Settings** ([http\(s\)://<Camera IP address>/control/app_config](http(s)://<Camera IP address>/control/app_config)).
2. Click on the name of the **Visage Technologies Face Recognition App**.

The configuration window of the app appears with the following options:

Visage Technologies Face Recognition		
Highlight Faces	<input checked="" type="checkbox"/>	Highlight detected/recognized faces.
Operating Mode	<div>Detection</div>	Select operating mode. <i>Detection:</i> detect faces in live image. <i>Enrollment:</i> enroll new persons to system. <i>Recognition:</i> recognize known persons.
Face Analysis	<input checked="" type="checkbox"/>	This option has to be enabled for the age, gender or emotion estimation to work.
Age	<input type="checkbox"/>	Display age.
Gender	<input type="checkbox"/>	Display gender.
Emotion	<input type="checkbox"/>	Display emotion. Emotion value classification: >= 0.5, then high >= 0.1 and < 0.5, then medium < 0.1, then low

Fig. 11: Default operating mode: Detection

Highlight Faces: Check to highlight detected or recognized faces with a bounding box

Operating Mode: Select one of the operating modes:

- [Detection, p. 19](#)
- [Enrollment, p. 19](#)
- [Recognition, p. 20](#)

Face Analysis: This option has to be enabled for the age, gender or emotion estimation to work.

- **Age:** Check to display the age of the detected person.
- **Gender:** Check to display the gender of the detected person.
- **Emotion:** Check to display an emotion value of the detected person.

Detection

In operation mode **Detection** faces in the live image are detected. There are no further configuration options available.

Visage Technologies Face Recognition		
Highlight Faces	<input checked="" type="checkbox"/>	Highlight detected/recognized faces.
Operating Mode	Detection	Select operating mode. Detection: detect faces in live image. Enrollment: enroll new persons to system. Recognition: recognize known persons.
Face Analysis	<input checked="" type="checkbox"/>	This option has to be enabled for the age, gender or emotion estimation to work.
Age	<input type="checkbox"/>	Display age.
Gender	<input type="checkbox"/>	Display gender.
Emotion	<input type="checkbox"/>	Display emotion. Emotion value classification: >= 0.5, then high >= 0.1 and < 0.5, then medium < 0.1, then low

Fig. 12: Operating mode: Detection

Enrollment

In the operation mode **Enrollment** persons currently visible in the camera image can be added. Known persons can be edited as well.

In the enrollment mode, the camera extracts a single face from the camera image. If the recognition quality is higher than that of the previously saved face, the app updates this face data. Faces are only extracted if the minimum recognition quality is reached.

Visage Technologies Face Recognition		
Highlight Faces	<input checked="" type="checkbox"/>	Highlight detected/recognized faces.
Operating Mode	Enrollment	Select operating mode. Detection: detect faces in live image. Enrollment: enroll new persons to system. Recognition: recognize known persons.
Face Analysis	<input checked="" type="checkbox"/>	This option has to be enabled for the age, gender or emotion estimation to work.
Age	<input checked="" type="checkbox"/>	Display age.
Gender	<input checked="" type="checkbox"/>	Display gender.
Emotion	<input type="checkbox"/>	Display emotion. Emotion value classification: >= 0.5, then high >= 0.1 and < 0.5, then medium < 0.1, then low
Granted Persons		List of granted persons
Add to granted list	Diego Maradonna Add Person	Add currently visible person to 'granted list' with the given name.
Denied Persons		List of denied persons
Add to denied list	Timo Werner Add Person	Add currently visible person to 'denied list' with the given name.
Clear Last Face	Clear	Clear the overlay face in top left corner. Enrollment status can also be cleared if available.

Fig. 13: Operating mode: Enrollment

Granted Persons: Persons added to the list of granted persons, their names can be edited or deleted.

Add to granted list: If a new person is detected they are highlighted in the camera image with a recognition quality level. Then you can give them an unique name and add them to the list of granted persons.

Denied Persons: Persons added to the list of denied persons, their names can be edited or deleted.

Add to denied list: If a new person is detected they are highlighted in the camera image with a recognition quality level. Then you can give them an unique name and add them to the list of denied persons.

Recognition

Known persons are recognized and highlighted in the camera image.

Visage Technologies Face Recognition		
Highlight Faces	<input checked="" type="checkbox"/>	Highlight detected/recognized faces.
Operating Mode	Recognition	Select operating mode. <i>Detection:</i> detect faces in live image. <i>Enrollment:</i> enroll new persons to system. <i>Recognition:</i> recognize known persons.
Face Analysis	<input checked="" type="checkbox"/>	This option has to be enabled for the age, gender or emotion estimation to work.
Age	<input type="checkbox"/>	Display age.
Gender	<input type="checkbox"/>	Display gender.
Emotion	<input type="checkbox"/>	Display emotion. Emotion value classification: >= 0.5, then high >= 0.1 and < 0.5, then medium < 0.1, then low
Confidence Threshold	High	Set confidence threshold for face recognition.
Show Name	<input checked="" type="checkbox"/>	Show name of successfully recognized person in live image.

Fig. 14: Operating mode: Recognition

Confidence Threshold: The **Confidence Threshold** represents a similarity threshold used for the face recognition. The higher the threshold is set, the more difficult it is to be recognized. On the other hand, a lower threshold reduces the reliability of the recognition.

Show Name: Show the name of successfully recognized persons in the live image.

Storing the Configuration

To store the configuration you have the following options:

Set

Factory

Restore

Close

Fig. 15: Storing the configuration

- Click on the **Set** button to activate your settings and to save them until the next reboot of the camera.
- Click on the **Factory** button to load the factory defaults for this dialog (this button may not be present in all dialogs).
- Click on the **Restore** button to undo your most recent changes that have not been stored in the camera permanently.
- Click on the **Close** button to close the dialog. While closing the dialog, the system checks the entire configuration for changes. If changes are detected, you will be asked if you would like to store the entire configuration permanently.

After successfully saving the configuration, the event and meta data are automatically sent to the camera in case of an event.

MxMessageSystem

What is MxMessageSystem?

MxMessageSystem is a communication system based on name oriented messages. This means that a message must have a unique name with a maximum length of 32 bytes.

Each participant can send and receive messages. MOBOTIX cameras can also forward messages within the local network. This way, MxMessages can be distributed over the entire local network (see Message Area: Global).

For example, a MOBOTIX 7 series camera can exchange a MxMessage generated by a camera app with an Mx6 camera that does not support certified MOBOTIX apps.

Facts about MxMessages

- 128-bit encryption ensures privacy and security of message content.
- MxMessages can be distributed from any camera of the Mx6 and 7 series.
- The message range can be defined individually for each MxMessage.
 - **Local:** Camera expects a MxMessage within its own camera system (e.g. through a Certified App).
 - **Global:** the camera expects a MxMessage that is distributed in the local network by another MxMessage device (e.g. another camera of the 7 series equipped with a certified MOBOTIX app).
- Actions that the recipients are to perform are configured individually for each participant of the MxMessageSystem.

MxMessageSystem: Processing the automatically generated app event

Checking Automatically Generated App Events

NOTE! After successfully activating the app (see [Activation of the Certified App Interface, p. 17](#)), a generic message event for this specific app is automatically generated in the camera.

- To check the event go to **Setup-Menu / Event Control / Event Overview**.
- The automatically generated message event profile is named after the application (e. g. VT_Face).

The screenshot displays the MOBOTIX web interface for configuring message events. At the top, the header shows 'MOBOTIX' and navigation icons. Below the header, a breadcrumb trail indicates the path: 'D71 mx10-32-75-149' > 'Message Events'. A table lists several message event profiles: 'MxActivitySensor', 'MxAnalytics', 'ObjRec', and 'VT_Face'. The 'VT_Face' profile is selected and highlighted in blue. Below the table, the configuration details for the 'VT_Face' profile are shown. The 'Event Dead Time' is set to 5 seconds. The 'Event Sensor Type' is set to 'MxMessageSystem'. The 'Event on receiving a message from the MxMessageSystem.' section shows the 'Message Name' as 'VT_Face', the 'Message Range' as 'Local', and the 'Filter Message Content' as 'No Filter'. At the bottom, there are buttons for 'Add new profile', 'Set', 'Factory', 'Restore', and 'Close'.

Fig. 16: Example: Generic message event from Visage Technologies Face Recognition App

Action handling - Configuration of an action group

CAUTION! To use events, trigger action groups or record images the general arming of the camera must be enabled ([http\(s\)/<Camera IP address>/control/settings](http(s)/<Camera IP address>/control/settings))

An action group defines which action(s) is (are) triggered by the Visage Technologies Face Recognition App event.

1. In the camera web interface, open: **Setup Menu / Event Control / Action Group Overview** ([http\(s\)/<Camera IP address>/control/actions](http(s)/<Camera IP address>/control/actions)).

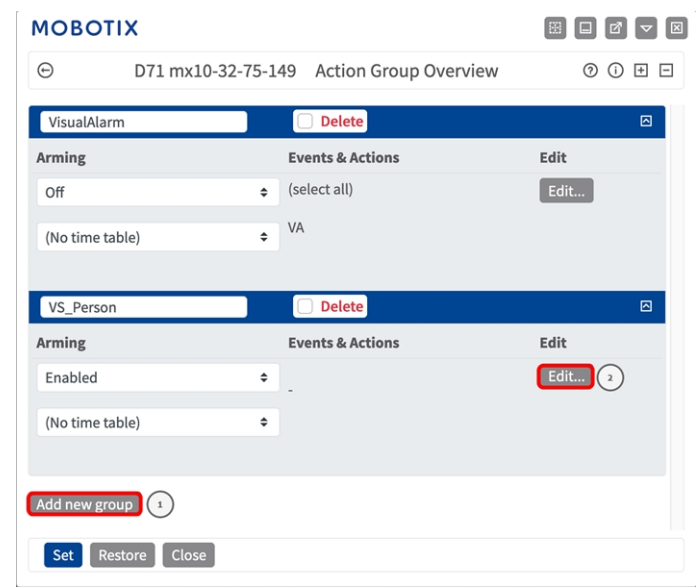


Fig. 17: Defining Action Groups

2. Click **Add new group**^① and give a meaningful name.
3. Click **Edit**^② , to configure the group.

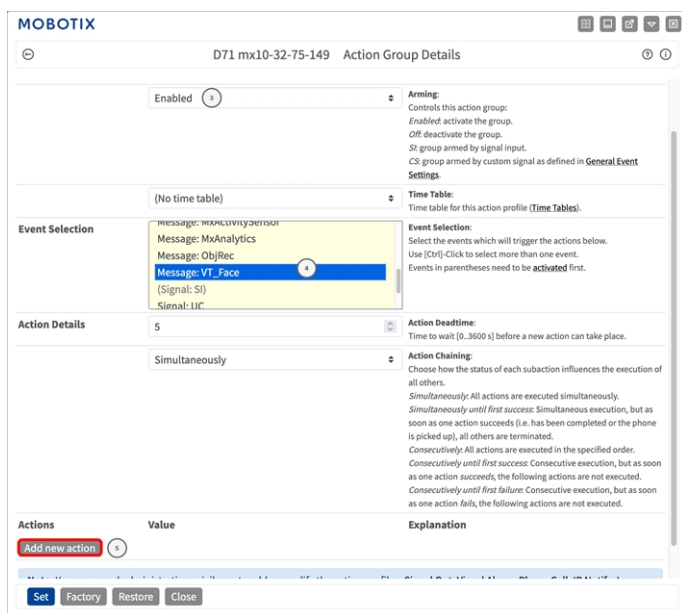


Fig. 18: Configuring an Action Group

1. Enable **Arming** ① of the Action Group.
2. Select your message event in the **Event selection** list ④ . To select multiple events, hold the shift key.
3. Click **Add new Action** ⑤ .
4. Select a proper action from list **Action Type and Profile** ⑥ .

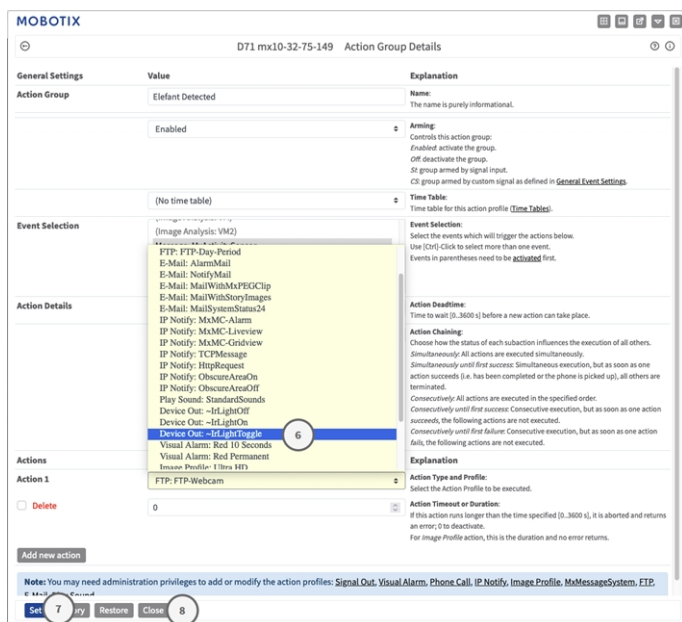


Fig. 19: Select Action Type- and Profile

NOTE! If the required action profile is not yet available, you can create a new profile in the Admin Menu sections "MxMessageSystem", "Transfer Profiles" and "Audio and VoIP Telephony".

If necessary, you can add further actions by clicking the button again. In this case, please make sure that the "action chaining" is configured correctly (e.g. at the same time).

5. Click on the **Set**^⑦ button at the end of the dialog box to confirm the settings.
6. Click on **Close**^⑧ to save your settings permanently.

Action settings - Configuration of the camera recordings

1. In the camera web interface, open: **Setup Menu / Event Control / Recording** ([http\(s\)://<Camera IP address>/control/recording](http(s)://<Camera IP address>/control/recording)).

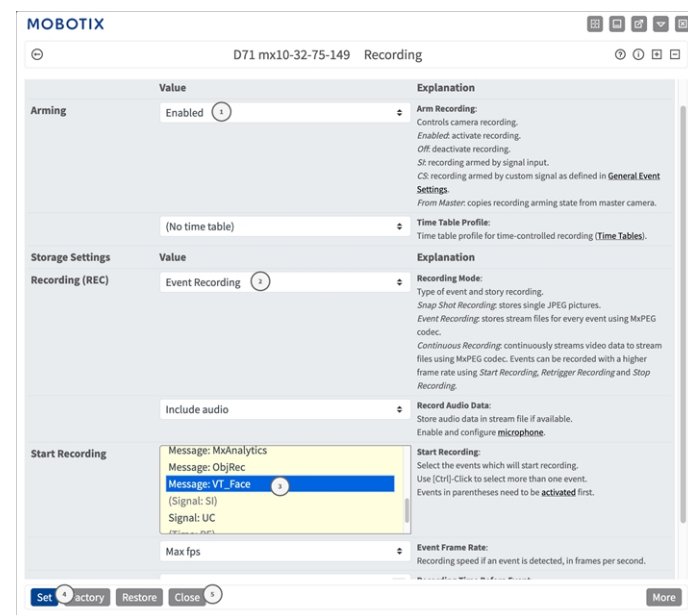


Fig. 20: Configuration of camera recording settings

2. Activate **Arm Recording**^① .
3. Under **Storage Settings / Recording (REC)** select a **Recording mode**^② . The following modes are available:
 - Snap Shot Recording
 - Event Recording
 - Continuous Recording
4. In list **Start recording**^③ select the message event just created.
5. Click on the **Set**^④ button at the end of the dialog box to confirm the settings.
6. Click on **Close**^⑤ to save your settings permanently.

NOTE! Alternatively, you can save your settings in the Admin menu under Configuration / Save current configuration to permanent memory.

Advanced Configuration: Processing the meta data transmitted by apps

Meta data transferred within the MxMessageSystem

For each event, the app also transfers meta data to the camera. This data is sent in the form of a JSON schema within a MxMessage.



Fig. 21: Example: Meta data transmitted within a MxMessage of the Visage Technologies Face Recognition App

NOTE! To view the meta data structure of the last App event, enter the following URL in the address bar of your browser: `http(s)/IPAdresseOfYourCamera/api/json/messages`

Creating a Custom Message Event

1. Go to **Setup-Menu / Event Control / Event Overview**. In section **Message Events** the automatically generated message event profile is named after the application ① (e. g. VT_Face).

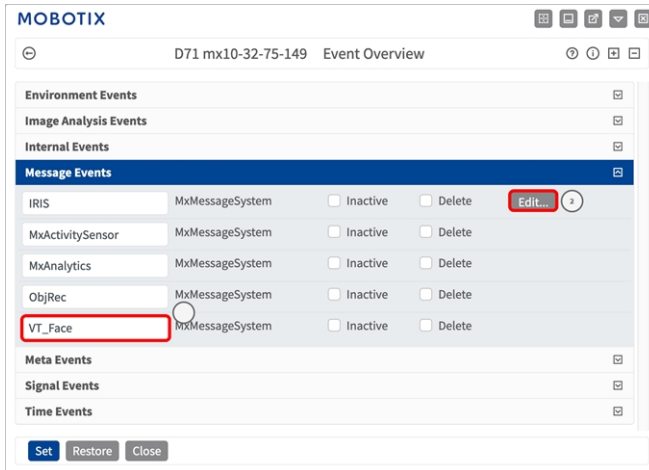


Fig. 22: Example: Generic message event from Visage Technologies Face Recognition App

2. Click **Edit**② to display a selection of all configured message events.

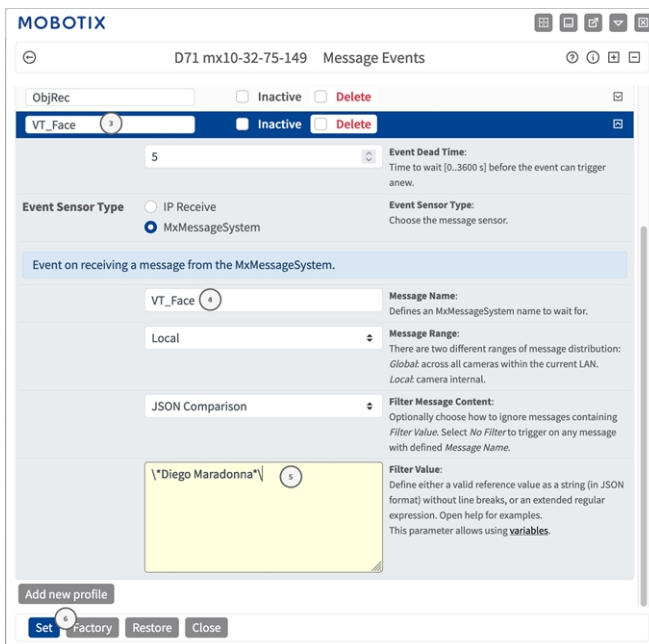


Fig. 23: Example: Recognized person message event

3. Click on the event (e. g. VT_Face) ③ to open the event settings.

4. Configure the parameters of the event profile as follows:
- **Message Name:** Enter the "Message Name" ④ according to the event documentation of the corresponding app (see [Examples for message names and filter values of the Visage Technologies Face Recognition App](#))
 - **Message Range:**
 - Local: Default settings for the Visage Technologies Face Recognition App
 - Global: (MxMessage is forwarded from another MOBOTIX camera in the local network.
 - **Filter Message Content:**
 - **No Filter:** Trigger on any message according to the defined **Message Name**.
 - **JSON Comparison:** Select if filter values are to be defined in JSON format.
 - **Regular Expression:** Select if filter values are to be defined as regular expression.
 - **Filter Value:**⑤ see [Examples for message names and filter values of the Visage Technologies Face Recognition App](#).

CAUTION! “Filter Value“ is used to differentiate the MxMessages of an app / bundle. Use this entry to benefit from individual event types of the apps (if available).

Choose “No Filter” if you want to use all incoming MxMessages as generic event of the related app.

2. Click on **Set**⑥ at the end of the dialog box to confirm the settings.

Examples for message names and filter values of the Visage Technologies Face Recognition App

	MxMessage Name	Filter Value
Generic Event	VT_Face	“recognizedPersons”



[EN_01/23](#)

MOBOTIX AG • Kaiserstrasse • D-67722 Langmeil • Tel.: +49 6302 9816-103 • sales@mobotix.com • www.mobotix.com

MOBOTIX is a trademark of MOBOTIX AG registered in the European Union, the U.S.A., and in other countries. Subject to change without notice. MOBOTIX do not assume any liability for technical or editorial errors or omissions contained herein. All rights reserved. © MOBOTIX AG 2020