

Guideline

Irisity IRIS Core Intrusion App

© 2023 MOBOTIX AG

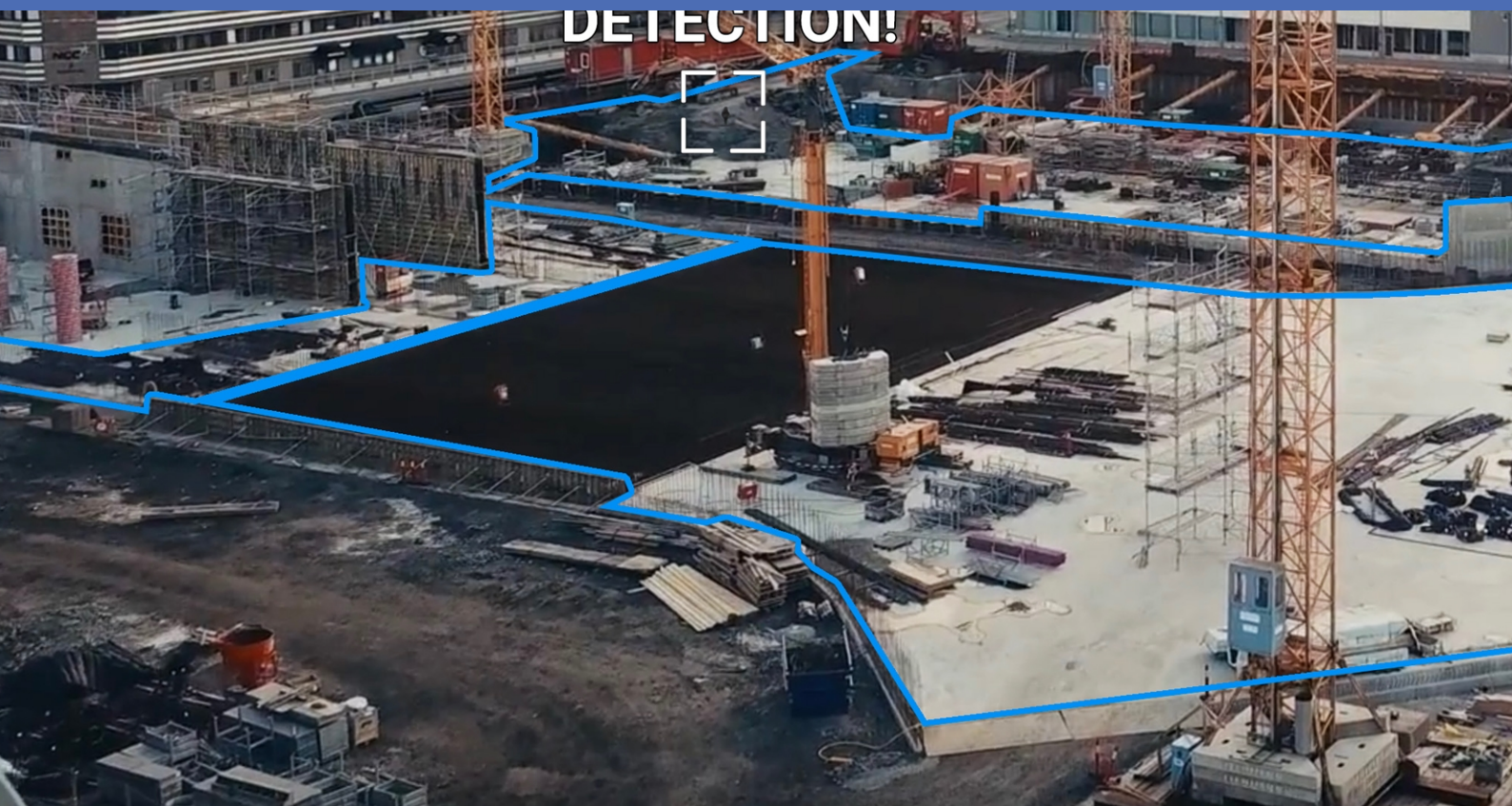


Table of Contents

- Table of Contents** 2
- Before You Start** 5
 - Support 6
 - MOBOTIX Support 6
 - MOBOTIX eCampus 6
 - MOBOTIX Community 6
 - Safety Notes 7
 - Legal Notes 7
- About Irisity IRIS Core Intrusion App** 9
 - Smart Data Interface to MxManagementCenter 9
- Technical Specifications** 11
- Licensing Certified Apps** 13
 - License Activation of Certified Apps in MxManagementCenter 13
 - Managing Licenses in MxManagementCenter 18
- Camera, image and scene requirements** 20
 - Troubleshooting 21
- Activation of the Certified App Interface** 23
- Configuration of Irisity IRIS Core Intrusion App** 25
 - IRIS Intrusion detection 25
 - Settings 26
 - Advanced Settings 28

IRIS Tampering Detection	28
Visual Overlays	29
Storing the Configuration	29
MxMessageSystem	31
What is MxMessageSystem?	31
Facts about MxMessages	31
MxMessageSystem: Processing the automatically generated app events	32
Checking automatically generated app events	32
Action handling - Configuration of an action group	33
Action settings - Configuration of the camera recordings	35
MxMessageSystem: Processing the meta data transmitted by apps	37
Meta data transferred within the MxMessageSystem	37
Creating a Custom Message Event	38
Examples for message names and filter values of the Irisity IRIS Core Intrusion App	40

Before You Start

Support	6
MOBOTIX Support	6
MOBOTIX eCampus	6
MOBOTIX Community	6
Safety Notes	7
Legal Notes	7

Support

MOBOTIX Support

If you need technical support, please contact your MOBOTIX dealer. If your dealer cannot help you, he will contact the support channel to get an answer for you as quickly as possible.

If you have internet access, you can open the MOBOTIX help desk to find additional information and software updates.

Please visit www.mobotix.com > **Support** > **Help Desk**.



MOBOTIX eCampus

The MOBOTIX eCampus is a complete e-learning platform. It lets you decide when and where you want to view and process your training seminar content. Simply open the site in your browser and select the desired training seminar.

Please visit www.mobotix.com/ecampus-mobotix.



MOBOTIX Community

The MOBOTIX community is another valuable source of information. MOBOTIX staff and other users are sharing their information, and so can you.

Please visit community.mobotix.com.



Safety Notes

- This product must not be used in locations exposed to the dangers of explosion.
- Do not use this product in a dusty environment.
- Protect this product from moisture or water entering the housing.
- Install this product as outlined in this document. A faulty installation can damage the product!
- This equipment is not suitable for use in locations where children are likely to be present.
- When using a Class I adapter, the power cord shall be connected to a socket-outlet with proper ground connection.
- To comply with the requirements of EN 50130-4 regarding the power supply of alarm systems for 24/7 operation, it is highly recommended to use an uninterruptible power supply (UPS) for backing up the power supply of this product.

Legal Notes

Legal Aspects of Video and Sound Recording

You must comply with all data protection regulations for video and sound monitoring when using MOBOTIX AG products. Depending on national laws and the installation location of the cameras, the recording of video and sound data may be subject to special documentation or it may be prohibited. All users of MOBOTIX products are therefore required to familiarize themselves with all applicable regulations and to comply with these laws. MOBOTIX AG is not liable for any illegal use of its products.

Declaration of Conformity

The products of MOBOTIX AG are certified according to the applicable regulations of the EC and other countries. You can find the declarations of conformity for the products of MOBOTIX AG on www.mobotix.com under **Support > Download Center > Marketing & Documentation > Certificates & Declarations of Conformity**.

RoHS Declaration

The products of MOBOTIX AG are in full compliance with European Unions Restrictions of the Use of Certain Hazardous Substances in Electrical and Electronic Equipment (RoHS Directive 2011/65/EC) as far as they are subject to these regulations (for the RoHS Declaration of MOBOTIX, please see www.mobotix.com, **Support > Download Center > Marketing & Documentation > Brochures & Guides > Certificates**).

Disposal

Electrical and electronic products contain many valuable materials. For this reason, we recommend that you dispose of MOBOTIX products at the end of their service life in accordance with all legal requirements and regulations (or deposit these products at a municipal collection center). MOBOTIX products must not be disposed of in household waste! If the product contains a battery, please dispose of the battery separately (the corresponding product manuals contain specific directions if the product contains a battery).

Disclaimer

MOBOTIX AG does not assume any responsibility for damages, which are the result of improper use or failure to comply to the manuals or the applicable rules and regulations. Our General Terms and Conditions apply. You can download the current version of the **General Terms and Conditions** from our website at www.mobotix.com by clicking on the corresponding link at the bottom of every page.

About Irisity IRIS Core Intrusion App

Detect human activity in armed zones

Irisity IRIS Core Intrusion App triggers alarms on trespassing in restricted areas. The algorithm offers accurate detections of human activity at long distances and across vast areas. The application has an accuracy of up to 99 %. The app can be tested free of charge for 30 days and can be activated for an unlimited period. Detections of human presence also includes vehicles such as bikes, cars, and trucks - even during bad weather conditions and under bad lighting.

- Detects the intrusion of objects of interest into user-defined detection zones / areas
- Designed for reliable detection of people and vehicles covering only small portions of the field of view
- Reduction of false alarms to a minimum by filtering out non-critical motion (e.g. trees, clouds, etc.)
- Simultaneous detection on one or more image sensors
- MOBOTIX events via MxMessageSystem
- Consolidated event search via MxManagementCenter Smart Data Interface and / or MOBOTIX HUB

CAUTION! ECO Thermal sensor modules are not supported by this app.

Smart Data Interface to MxManagementCenter

This app has a Smart Data interface to MxManagementCenter.

With the MOBOTIX Smart Data System, transaction data can be linked to the video recordings made at the time of the transactions. Smart Data source can be e.g. MOBOTIX Certified Apps (no license required) or general Smart Data sources (license required) like POS systems or license plate recognition systems.

The Smart Data System in MxManagementCenter enables you to quickly find and review any suspicious activities. The Smart Data Bar and the Smart Data View are available for searching and analyzing transactions. The Smart Data Bar provides a direct overview of the most recent transactions (from the last 24 hours) and for this reason it is convenient to use it for reviews and searches.

NOTE! For information on how to use the Smart Data System, see the corresponding online help of the camera software and MxManagementCenter.

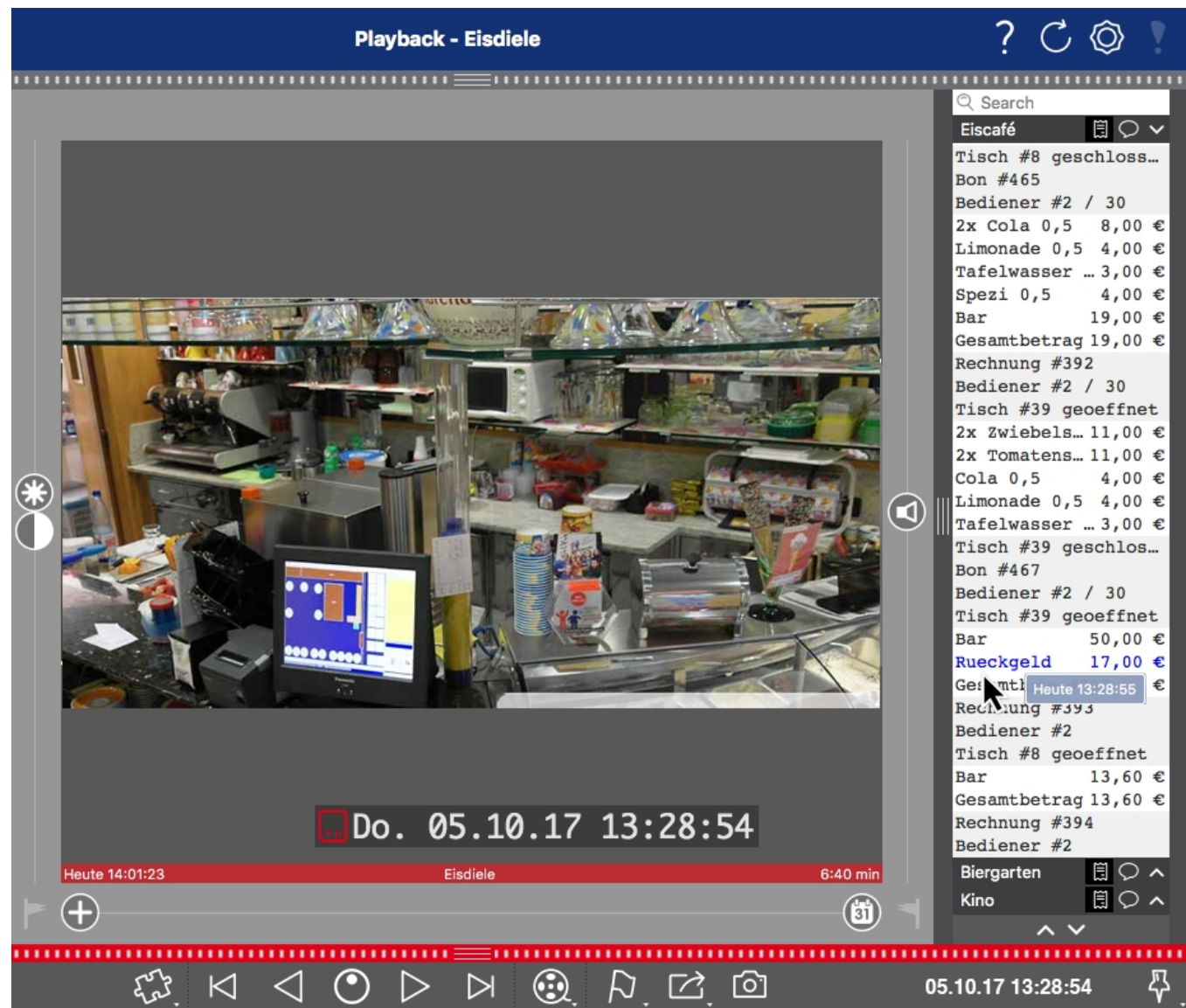


Fig. 1: : Smart Data Bar in MxManagementCenter (Example: POS System)

Technical Specifications

Product Information

Product Name	Irisity IRIS Core Intrusion App
Order Code	Mx-APP-IRIS-C-INT
Supported MOBOTIX Cameras	Mx-M73A, Mx-S74A
Minimum Camera Firmware	V7.3.0.x
MxManagementCenter Integration	<ul style="list-style-type: none">■ min. MxMC v2.5.3■ Configuration: Advanced Config license required■ Research: Smart Data Interface license included

Product Features

App Features	<ul style="list-style-type: none">■ Detects the intrusion of objects of interest into user-defined detection zones / areas■ Designed for reliable detection of people and vehicles covering only small portions of the field of view■ Reduction of false alarms to a minimum by filtering out non-critical motion (e.g. trees, clouds, etc.)■ Simultaneous detection on one or more image sensors■ MOBOTIX events via MxMessageSystem■ Consolidated event search via MxManagementCenter Smart Data Interface and / or MOBOTIX HUB
Maximum number of recognition zones	20
Meta Data / Statistic formats	JSON
Trial License	30-day trial license pre-installed
MxMessageSystem supported	Yes

MOBOTIX Events	Yes
ONVIF Events	Yes (Generic Message event)

Scene Requirements

Minimum object height	20 px / ~6% of image height (analysis currently locked to 640 x 360 resolution)
Camera mounting height	min. 2m (considering scene requirements mostly 5 - 20m are optimal)
Maximum Vertical Angle	180°
Maximum Horizontal Angle	180°
Maximum Tilt Angle	Down tilt only: no limit

Technical App Specifications

Synchronous / Asynchronous App	Asynchronous
Accuracy	> 99% (considering scene requirements)
Processed number of frames per second	Typ. 10 fps
Detection time	~ 2 sec

Licensing Certified Apps

The following licenses are available for the Irisity IRIS Core Intrusion App:

- **30-day test license** pre-installed
- **permanent commercial license**

The usage period begins with activation of the app interface (see)

NOTE! For buying or renewing a license, contact your MOBOTIX Partner.

NOTE! Apps are usually pre-installed with the firmware. In rare cases, apps must be downloaded from the website and installed. In this case see www.mobotix.com > **Support** > **Download Center** > **Marketing & Documentation**, download and install the app.

License Activation of Certified Apps in MxManagementCenter

After a test period commercial licenses must be activated for use with a valid license key.

Online-Activation

After receiving the activation IDs, activate them in MxMC as follows:

1. Select from the menu **Window > Camera App Licenses**.
2. Select the camera on which you want to license apps and click **Select**.

Licensing Certified Apps

License Activation of Certified Apps in MxManagementCenter

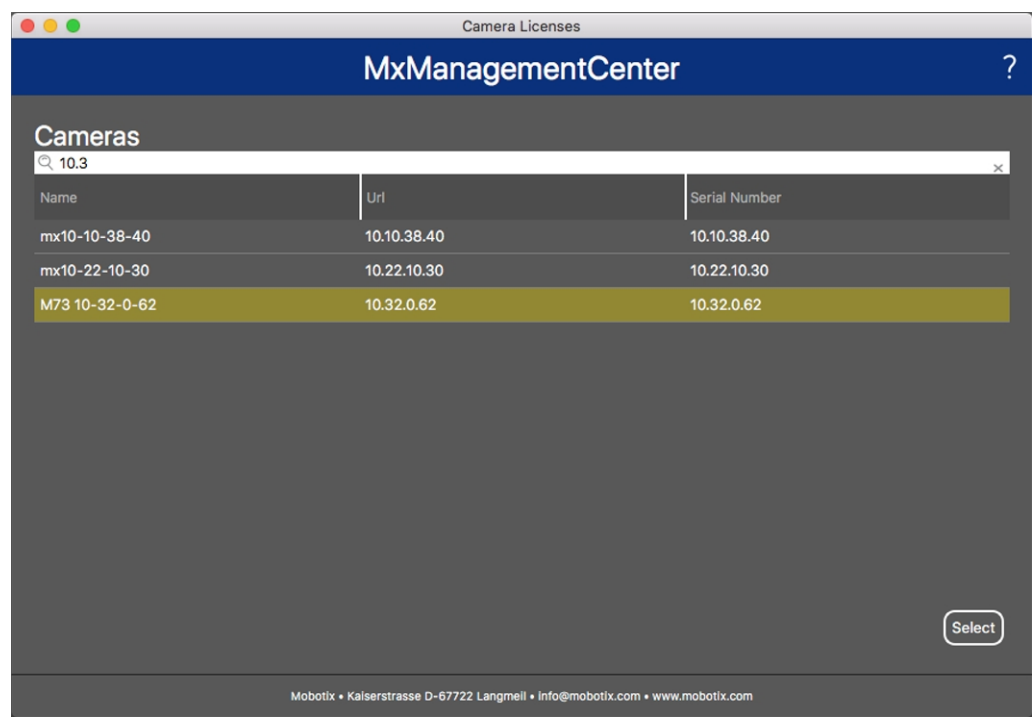


Fig. 2: Overview of Camera App Licenses in MxManagementCenter

NOTE! If necessary, correct the time set on the camera.

1. An overview of the licenses installed on the camera may be displayed. Click **Activate License**.

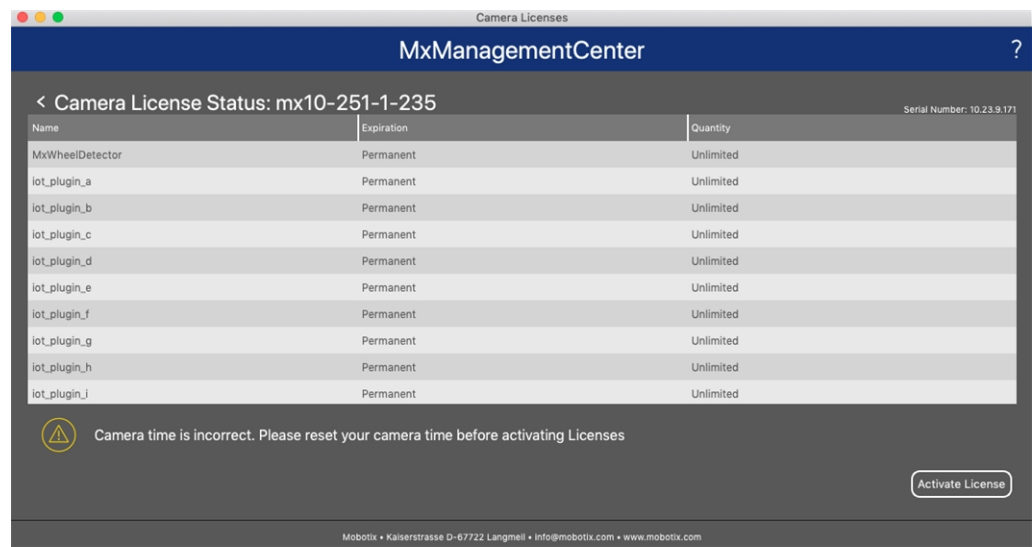



Fig. 3: Overview of the licenses installed on the camera

NOTE! If necessary, correct the time set on the camera.

2. Enter a valid Activation ID and specify the number of licenses to install on this computer.
3. If you want to license another product, click on . In the new row, enter the appropriate Activation ID and the number of licenses you want.

4. To remove a line click .
5. When you have entered all Activation IDs, click **Activate License Online**. During activation, **MxMC** connects to the license server. This requires an Internet connection.

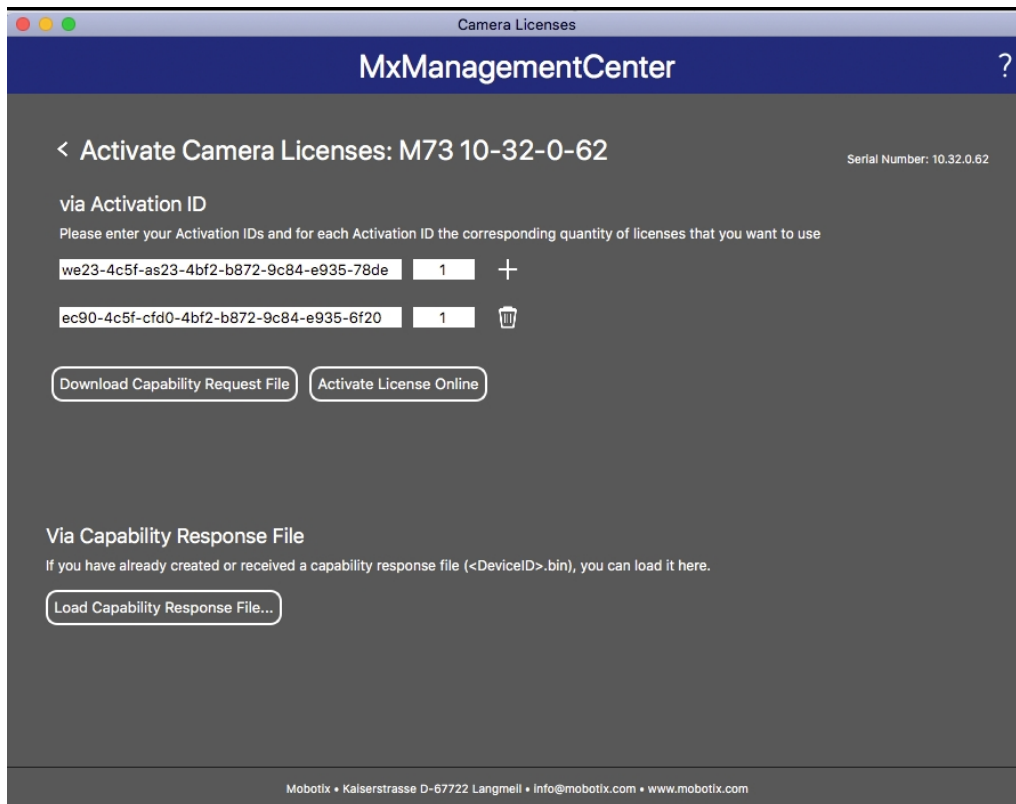


Fig. 4: Adding licenses

Successful activation

After successful activation, a new log in is required to apply the changes. Alternatively, you can return to license management.

Failed activation (missing internet connection)

If the license server cannot be reached, e.g. due to a missing internet connection, apps can also be activated offline. (see [Offline Activation](#), p. 15).

Offline Activation

For offline activation, the partner/installer from whom you purchased the licenses can generate a capability response (.bin file) on the license server to activate their licenses.

1. Select from the menu **Window > Camera App Licenses**.
2. Select the camera on which you want to license apps and click **Select**.

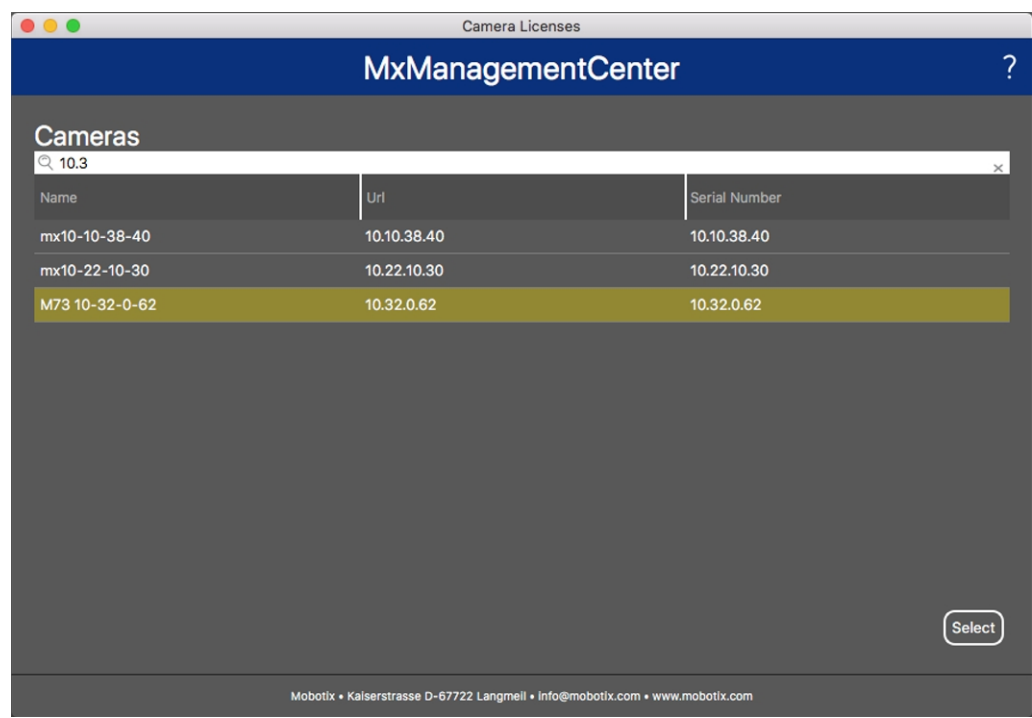


Fig. 5: Overview of Camera App Licenses in MxManagementCenter

NOTE! If necessary, correct the time set on the camera.

3. An overview of the licenses installed on the camera may be displayed. Click **Activate License**.

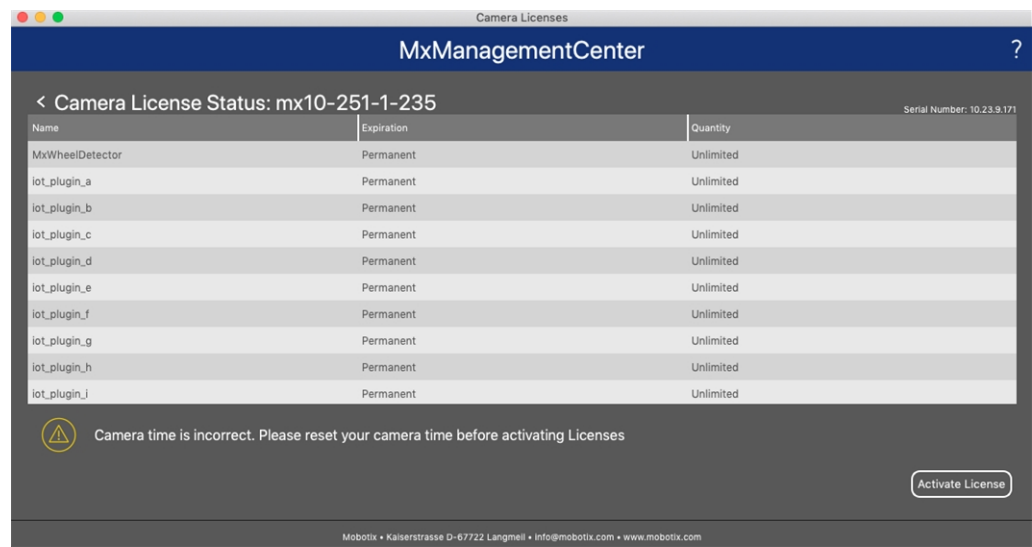




Fig. 6: Overview of the licenses installed on the camera

NOTE! If necessary, correct the time set on the camera.

4. Enter a valid Activation ID and specify the number of licenses to install on this computer.
5. If you want to license another product, click on . In the new row, enter the appropriate **Activation ID** and the number of licenses you want.
6. If necessary, click  to remove a line.
7. When you have entered all Activation IDs, click **Download Capability Request File (.lic)** and send it to your partner/installer.

NOTE! This file allows the partner / installer from whom you purchased the licenses to generate a capability response file (.bin) on the license server.

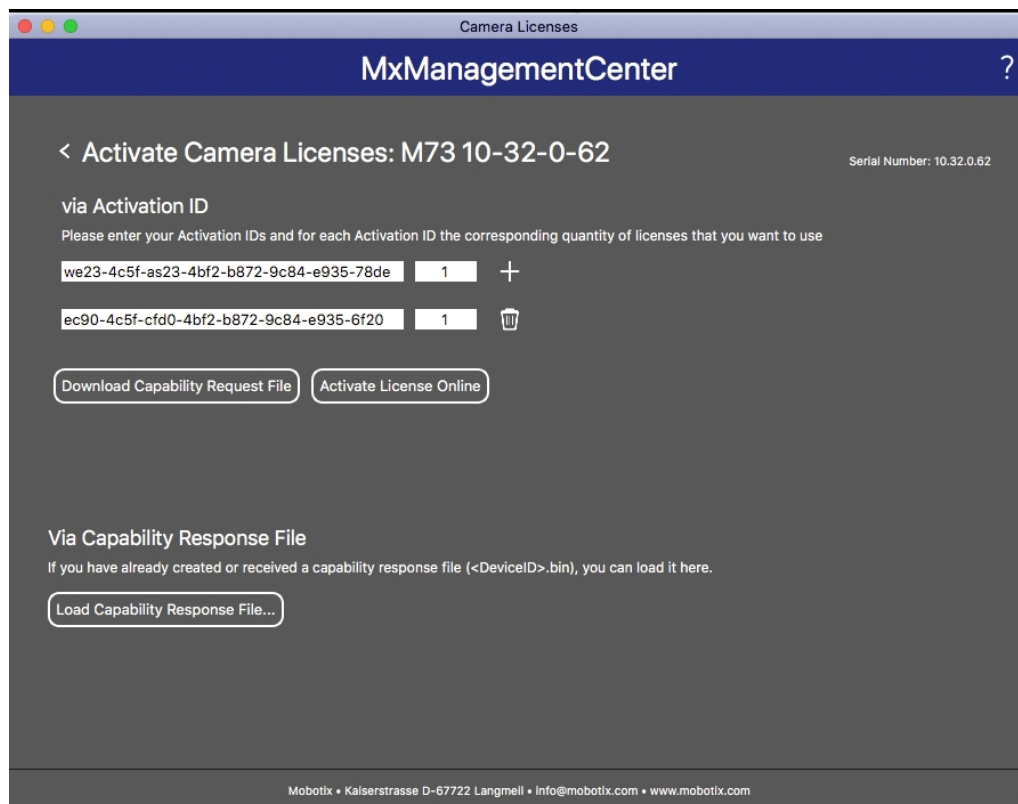


Fig. 7: Adding licenses

8. Click Load Capability Response File and follow the instructions.

Successful activation

After successful activation, a new log in is required to apply the changes. Alternatively, you can return to license management.

Managing Licenses in MxManagementCenter

In MxManagementCenter you can comfortably manage all licenses that have been activated for a camera.

- 1. Select from the menu **Window > Camera App Licenses**.
- 2. Select the camera on which you want to license apps and click **Select**.

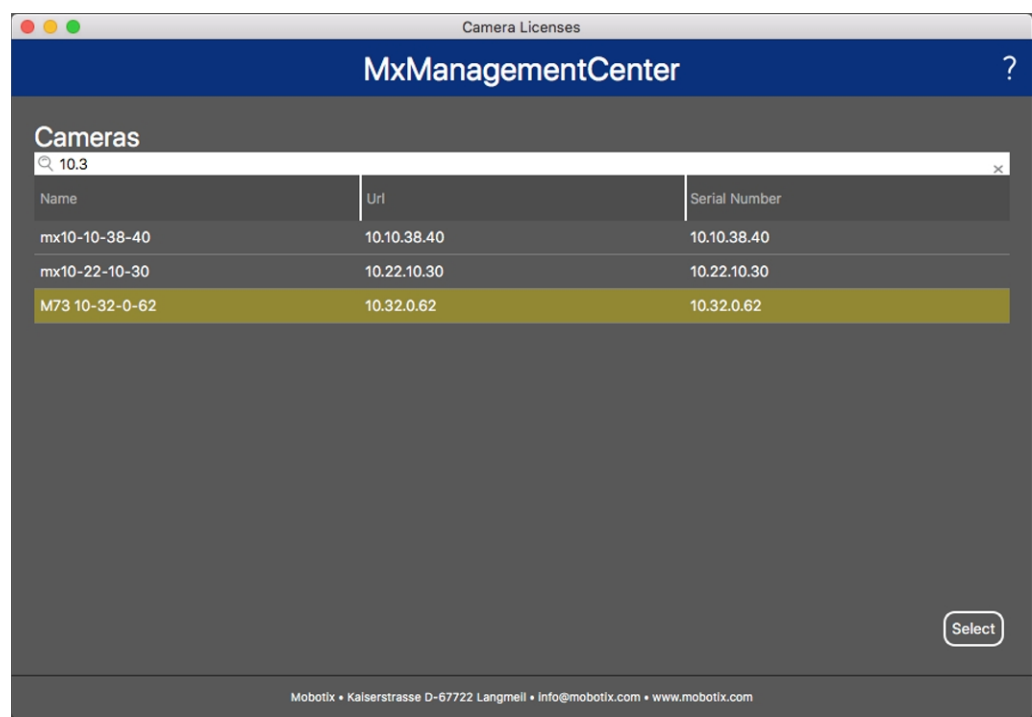


Fig. 8: Overview of Camera App Licenses in MxManagementCenter

An overview of the licenses installed on the camera may be displayed.

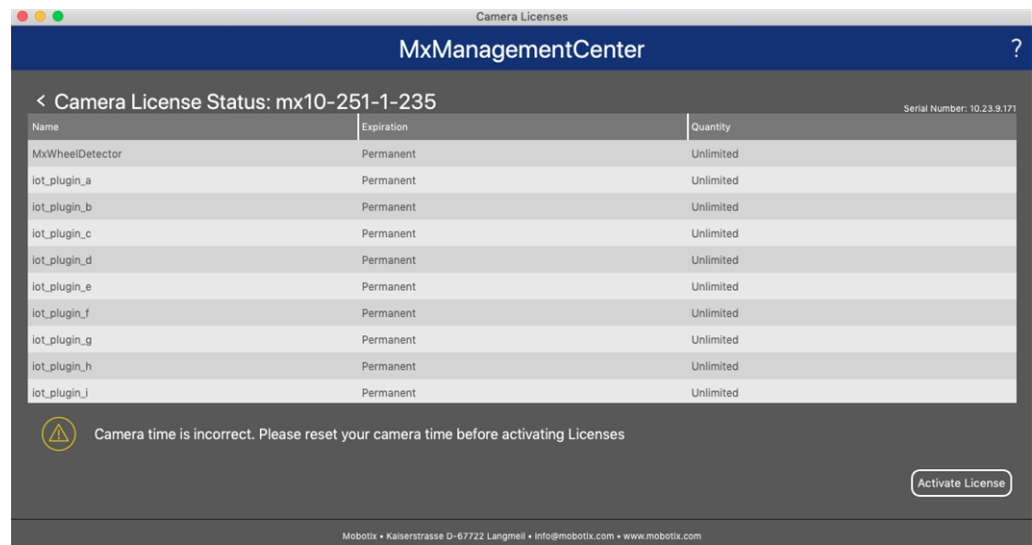


Fig. 9: Overview of the licenses installed on the camera

NOTE! If necessary, correct the time set on the camera.

Column	Explanation
Name	Name of the licensed app
Expiration	the time limit of the license
Quantity	Number of licenses purchased for a product.
Serial Number	Unique identification determined by MxMC for the device used. If problems occur during licensing, please have the device ID ready.

Synchronize licenses with server

When the program starts, there is no automatic comparison of the licenses between the computer and the license server. Therefore, click **Update** to reload the licenses from the server.

Update licenses

To update temporary licenses, click **Activate Licenses**. The dialog for updating/activating licenses opens.

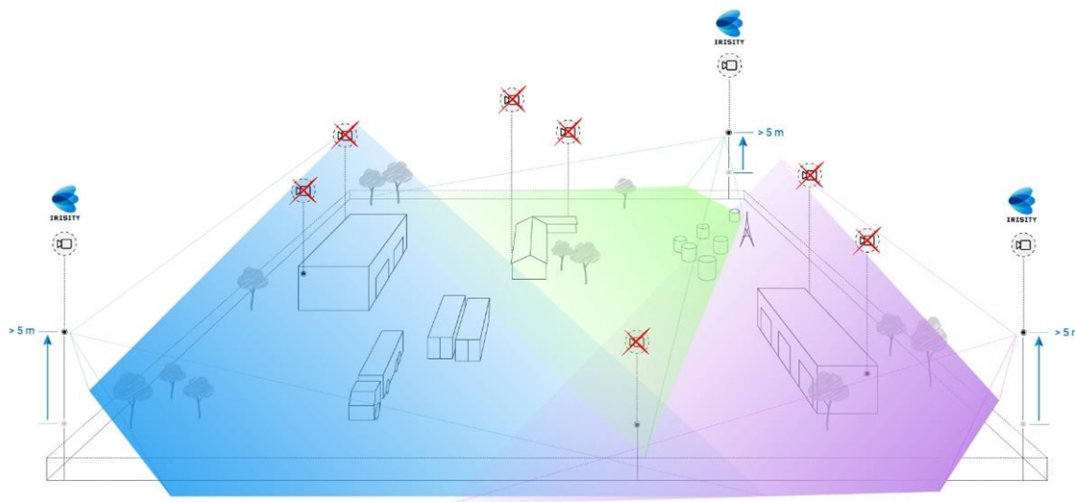
NOTE! You need administrator rights to synchronize and update licenses.

Camera, image and scene requirements

The camera should be setup so that the combination of the distance, the lens's focal length and the camera's resolution provide an image that can be accurately analyzed. Therefore the following prerequisites must be fulfilled for the scene:

Highest possible mounting positions for best results

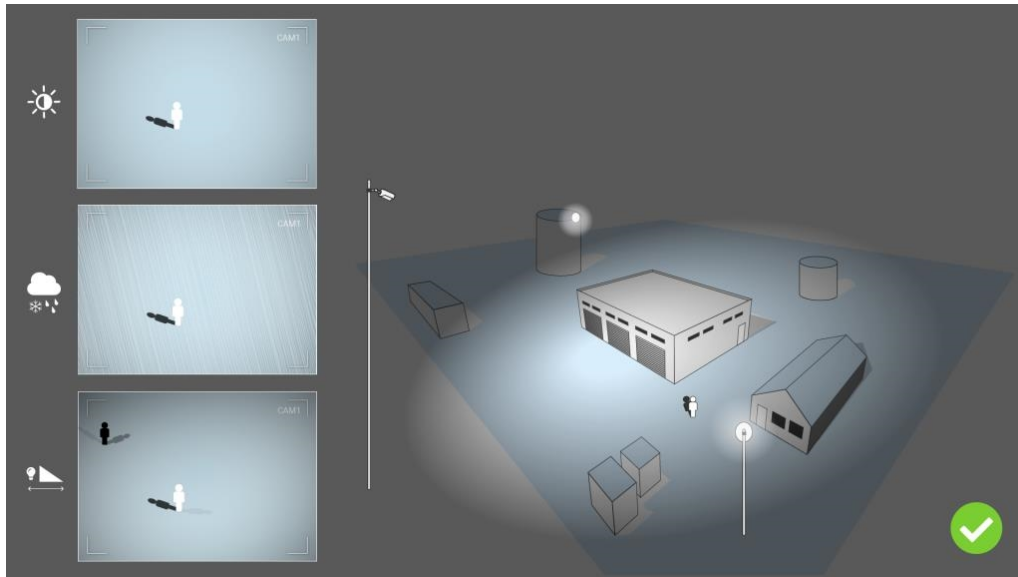
When planning your video surveillance system, prefer the highest possible camera positions in order to cover as much area as possible with each camera. Consider an installation height of at least 5 meters. An installation height of 10-25 meters usually leads to significantly better results.



Scene illumination

With optimal light sources (we recommend at least two light sources) can significantly improve the quality of video analysis and thus the security of your site.

- Illuminate the monitored area sufficiently.
- Ensure good contrast in the surveillance area.
- Do not over-light objects near the cameras to avoid blending and noise.



Troubleshooting

Light design issues

By placing the light source near the camera and too far away from the guarded object, the emitted light may compromise surveillance by creating video issues. Possible issues are:

- Contrast in the video image may be too low (without shadows)
- Light source may create noise in picture by accentuating raindrops and snowflakes
- Light intensity may not be sufficient to light up the guarded object

While the camera's built-in lighting, or other on-axis lighting, is often convenient it often reduces the efficiency of the surveillance system. In challenging weather intruders might become almost invisible, hidden behind rain, snow or fog

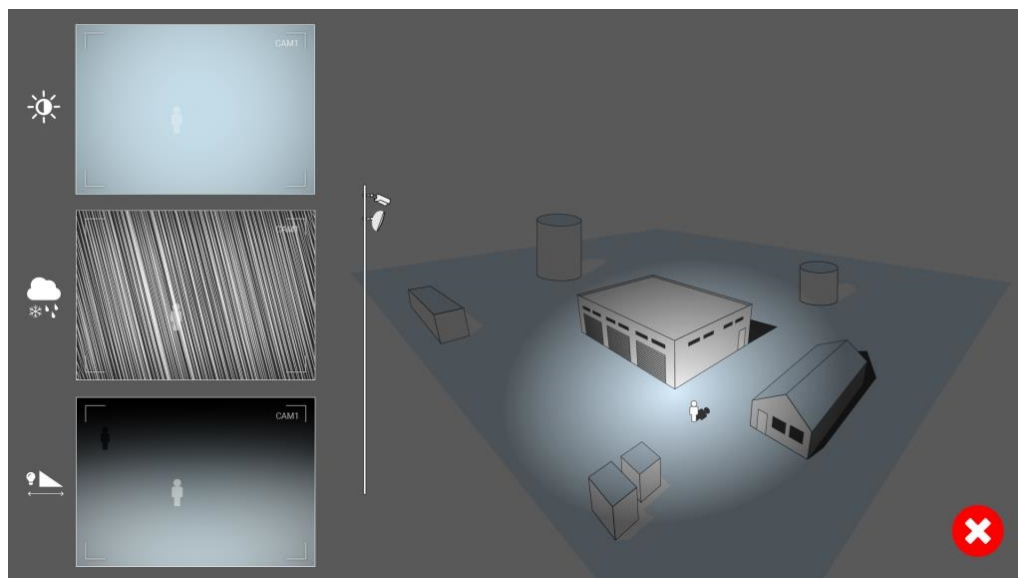


Fig. 10: In challenging weather intruders might become almost invisible, hidden behind rain, snow or fog

Activation of the Certified App Interface

CAUTION! The Irisity IRIS Core Intrusion App does not consider obscure areas defined for the live image. Therefore there is no pixelation in obscure areas while configuring the app and during image analysis by the app.

NOTE! The user must have access to the setup menu ([http\(s\)://<Camera IP address>/control](http(s)://<Camera IP address>/control)). Therefore check the user rights of the camera.

1. In the camera web interface, open: **Setup Menu / Certified App Settings** ([http\(s\)://<Camera IP address>/control/app_config](http(s)://<Camera IP address>/control/app_config)).

MOBOTIX M73 mx10-32-6-96 Certified App Settings

General Settings

Arming ① ☒ Active Activate app service.

Note: It is not recommended to activate more than 2 apps.

Resource monitor ☐ Active Display camera actual load in live image.

Note: High performance impact. Use for testing purposes only.

Custom font ☐ Active Use custom font for the text displays in live image. To select or upload a custom font please go to [Manage Font File](#).

App Settings

App	Activation	License	Explanation	Version	Delete	Delete application
FFLPR MMCR	Trial	Trial available.	Please update the license.	1.4.0	Data	Delete application
<u>Irisity IRIS AI Analytics Settings</u>	② <input checked="" type="checkbox"/>	2021-11-23 (30 day trial).	Irisity IRIS AI Analytics	1.0	Data (4.0K)	Delete application
FFLPR MMCR	Trial	Trial available.	Please update the license.	1.4.0	Data	Delete application
Irisity IRIS AI Analytics	Trial	Trial available.	Please update the license.	1.0	Data	Delete application

Set ③ actory Restore Close

2. Under **General Settings** activate the **Arming** of the MOBOTIX app service ① .
3. Click Set ③ . The installed apps are now listed.

4. Under **App Settings** check the **Active** option of the of the relevant app.
5. Click on the name of the App ② to be configured to open the Apps user interface.
6. For configuration of the App see [Configuration of Irisity IRIS Core Intrusion App, p. 25](#)

Configuration of Irisity IRIS Core Intrusion App

CAUTION! The user must have access to the setup menu ([http\(s\)://<Camera IP address>/control](http(s)://<Camera IP address>/control)). Therefore check the user rights of the camera.

1. In the camera web interface, open: **Setup Menu / Certified App Settings** ([http\(s\)://<Camera IP address>/control/app_config](http(s)://<Camera IP address>/control/app_config)).
2. Click on the name of the **Irisity IRIS Core Intrusion App**.

The configuration window of the app appears with the following options:

IRIS Intrusion detection

MOBOTIX M73 mx10-32-6-96 Irisity AI Analytics Settings

Irisity AI Analytics

IRIS Intrusion detection

Enable intrusion detection ☒

IRIS™ Intrusion detection triggers alarms on trespassing in restricted areas. The algorithm offers accurate detections of human activity at long distances and across vast areas. Due to advanced machine learning trained for 15+ years the algorithm generates highly accurate events keeping false alarms to an absolute minimum. IRIS™ Intrusion works just as well during bad weather conditions and under bad lighting. It is camera agnostic and works equally well with thermal and optical cameras, color and gray-scale, old analog and modern ones. Detections of human presence also includes vehicles such as bikes, cars, and trucks.

Settings

Choose sensor to enable analysis on Right sensor

Human size selector

Position: 0 x 0

Size: [Range Slider]

Analysis can run on left or right sensor. Make sure you configure the viewing mode to match this setting. Irisity recommends running on the most light-sensitive, typically black/white, sensor available. Thermal/infrared sensors are also supported.

Draw two rectangles the size of an adult human standing on the ground (~180 cm height). One larger rectangle close to the camera (closer to the image bottom) and one farther away (closer to the image top). This configuration is essential for the analysis to do an accurate 3D projection of the camera view and approximate pixels per meter accurately in various

Set **Factory** **Restore** **Close**

Enable intrusion detection: Check to activate the algorithm

Settings

- **Choose sensor to enable analysis on:** Select the sensor to be used for image analysis.
- **Human size selector:** Two rectangles which represent the size of an adult human standing on the ground (~180 cm height) are required for perspective correction (see [Human Size Selector, p. 26](#)).
- **Alarm zones:** At least one alarm zone (detection area) needs to be defined in the live image (see [Alarm Zones, p. 27](#)).
- **Detect Object Type:** Select a filter to trigger on humans or vehicles only. Detections by default include all human-propelled motion such as pedestrians, bikes, cars and trucks.

Human Size Selector

The configuration of an Human size selector is essential for the analysis to do an accurate 3D projection of the camera view and approximate pixels per meter accurately in various parts of the image.

Human size selector

Human size

Position

264 x 1

Size

209 x 486

Edit Rectangle

Human size

Position

939 x 384

Size

92 x 320

Edit Rectangle

Draw two rectangles the size of an adult human standing on the ground (~180 cm height). One larger rectangle close to the camera (closer to the image bottom) and one farther away (closer to the image top). This configuration is essential for the analysis to do an accurate 3D projection of the camera view and approximate pixels per meter accurately in various parts of the image.

Draw each rectangle with the bottom side touching the ground in the position where you set the size of a human.

Therefore draw one larger rectangle close to the camera (closer to the image bottom) and one farther away (closer to the image top).

NOTE! Draw each rectangle with the bottom side touching the ground in the position where you set the size of a human. (see [Drawing a Human Size Selector](#)).

Drawing a rectangular Area in the Live View

In Live View, there you can draw rectangular area. Depending on the App these areas are e.g. Detection Areas, Excluded Areas, Reference Areas, Human Size Selectors etc.

1. In the Live View simply click and drag a rectangular area.
2. Drag the corner points to the desired position.
3. In the top right corner of the live view click **Submit** to adopt the coordinates of the polygon.
4. Optionally click the **bin** icon to delete the recognition area.

Alarm Zones

You can optionally set one or more Alarm Zones (detection areas). If left blank the entire image will be used for detections.

The screenshot shows the 'Alarm zones' configuration page in the MOBOTIX M73 mx10-32-6-96 Irisity AI Analytics Settings. The page has a header with the MOBOTIX logo and navigation icons. Below the header, there's a title bar with the device name and settings icon. The main content area is titled 'Alarm zones' and contains two sections for defining alarm zones. Each section has an 'Area name' field (both set to 'Intrusion zone') and an 'Area' section with four input fields for corner coordinates (x1, y1, x2, y2). The first section's coordinates are 293, 614, 293, 614, 499, 761, 709, 499, and 526, 261. The second section's coordinates are 282, 423, 439, 409, and 474, 644. There are 'Edit Polygon' buttons for each section. At the bottom left, there are three icons: a trash can (labeled 3), a plus sign (labeled 2), and a bin icon (labeled 4). A note on the right states: 'You can optionally set one or more specific, named, detection areas. If left blank the entire image will be used for detections.'

Area Name Enter an unique name to identify the Alarm Zone

Area: The defined corner points of the Alarm Zone. Click **Edit Polygon** ① to draw the Detection Area in the Live View (see [Drawing a Polygon Area in the Live View, p. 28](#)).

Add an Alarm Zone: Click the **plus** icon ② .

Delete an Area: Click the **bin** icon ③ .

Delete corner point: Click the **bin** icon ④ .

Drawing a Polygon Area in the Live View

In Live View, there you can draw areas based on polygons depending on the App. These areas are e.g. Detection Areas, Excluded Areas, Reference Areas etc.

1. In the Live View simply click and drag a rectangular area.
2. Drag the corner points to the desired position.
3. To add another corner point, drag a smaller point between two corner points on the contour of the area.
4. In the top right corner of the live view click **Submit** to adopt the coordinates of the polygon.
5. Optionally click the **bin** icon to delete the recognition area.

Advanced Settings

- **Alarm zone cooldown:** Number of seconds an alarm zone will be deactivated after an alarm has been triggered.
- **Event cooldown:** Number of seconds an alarm will disable further detections from the same alarming object, including nearby objects.
- **Sensitivity:** Level of sensitivity for objects to be classified as human activity. Medium is recommended in most cases.

IRIS Tampering Detection

Here you can configure the tampering detection features .

Enable camera covered detection: Check to activate the algorithm.

NOTE! IRIS™ Tampering detection triggers events both when the camera is covered and when this has been resolved.


Enable camera redirected detection: Check to activate the algorithm.

NOTE! IRIS™ Tampering detection triggers events when the camera is suddenly redirected.

Choose sensor to enable analysis on: Select the sensor on which the analytics should run.

Visual Overlays

Here you can select objects and data of IRIS Intrusion Detection to be displayed in the live image.

Visual overlays 		
Alarming object	<input checked="" type="checkbox"/>	Show a bounding box around the object triggering an alarm for 10 seconds after the alarm.
Alarm zones	<input checked="" type="checkbox"/>	Show the active analytics areas.
Running analytics	<input checked="" type="checkbox"/>	Show overlay text when the analytics is running, like 'Irisity - IRIS AI Analytics'.
Detection text	<input type="checkbox"/>	Overlay a box showing text like 'Intrusion detected' when alarms are triggered. Typically, only used during demos or testing.
Diagnostics	<input type="checkbox"/>	Overlay various diagnostics and tracking overlays. Not recommended for production use.

Alarming object: Check to show a bounding box around the object triggering an alarm for 5 seconds after the alarm.

Alarm zones: Check to show the active analytics areas.

Running analytics: Check to overlay text of the analytics configured and running, e. g. "Irisity - IRIS Intrusion detection".

Detection text: Check to overlay a box showing text like 'Intrusion detected' when alarms are triggered.

Diagnostics: Check to overlay various diagnostics and tracking overlays e. g. for debugging.

Storing the Configuration

To store the configuration you have the following options:



- Click **Set** to activate your settings and to save them until the next reboot of the camera.
- Click **Factory** to load the factory defaults for this dialog (this button may not be present in all dialogs).
- Click **Restore** to undo your most recent changes that have not been stored in the camera permanently.
- Click **Close** to close the dialog. While closing the dialog, the system checks the entire configuration for changes. If changes are detected, you will be asked if you would like to store the entire configuration permanently.

After successfully saving the configuration, the event and meta data are automatically sent to the camera in case of an event.

MxMessageSystem

What is MxMessageSystem?

MxMessageSystem is a communication system based on name oriented messages. This means that a message must have a unique name with a maximum length of 32 bytes.

Each participant can send and receive messages. MOBOTIX cameras can also forward messages within the local network. This way, MxMessages can be distributed over the entire local network (see Message Area: Global).

For example, a MOBOTIX 7 series camera can exchange a MxMessage generated by a camera app with an Mx6 camera that does not support certified MOBOTIX apps.

Facts about MxMessages

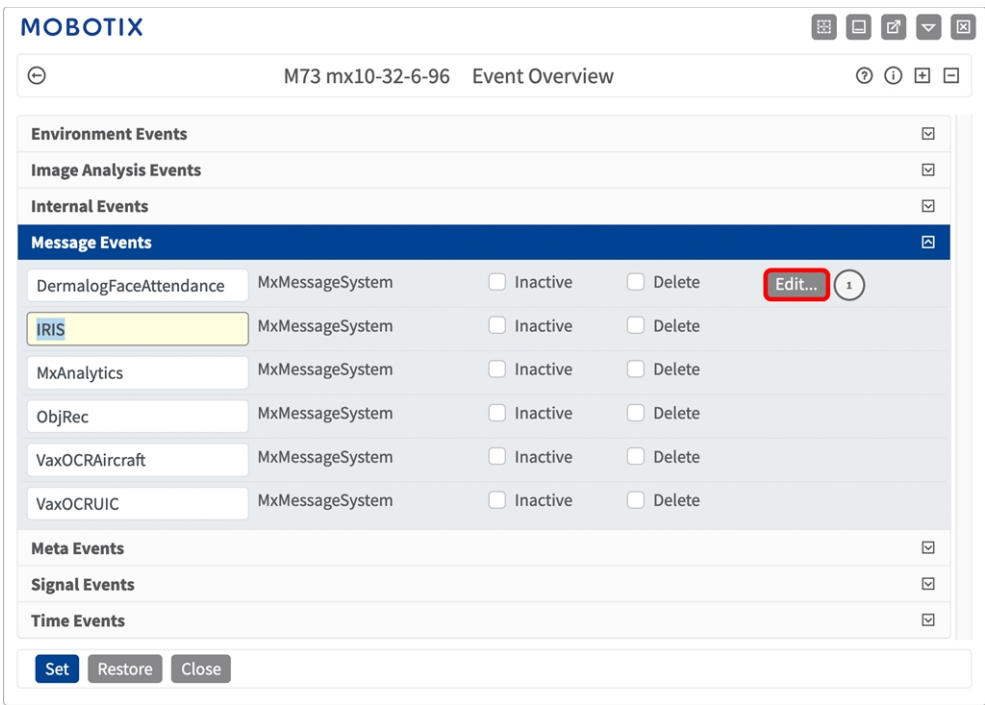
- 128-bit encryption ensures privacy and security of message content.
- MxMessages can be distributed from any camera of the Mx6 and 7 series.
- The message range can be defined individually for each MxMessage.
 - **Local:** Camera expects a MxMessage within its own camera system (e.g. through a Certified App).
 - **Global:** the camera expects a MxMessage that is distributed in the local network by another MxMessage device (e.g. another camera of the 7 series equipped with a certified MOBOTIX app).
- Actions that the recipients are to perform are configured individually for each participant of the MxMessageSystem.

MxMessageSystem: Processing the automatically generated app events

Checking automatically generated app events

NOTE! After successfully activating the app (see [Activation of the Certified App Interface, p. 23](#)), a generic message event for this specific app is automatically generated in the camera.

1. Go to **Setup-Menu / Event Control / Event Overview**. In section **Message Events** the automatically generated message event profile is named after the application (e. g. IRIS).



- Click **Edit** ^① to display a selection of all configured message events.

MOBOTIX

M73 mx10-32-6-96 Message Events

Attribute	Value	Explanation
IP Receive	8000	Port: TCP port to listen on.
Events	IRIS	Event Dead Time: Time to wait [0..3600 s] before the event can trigger anew.
	5	Event Sensor Type: Choose the message sensor.
Event Sensor Type	IP Receive	
	MxMessageSystem	
Event on receiving a message from the MxMessageSystem.		
	IRIS	Message Name: Defines an MxMessageSystem name to wait for.
	Local	Message Range: There are two different ranges of message distribution: Global: across all cameras within the current LAN. Local: camera internal.
	No Filter	Filter Message Content: Optionally choose how to ignore messages containing Filter Value. Select No Filter to trigger on any message with defined Message Name.
MxAnalytics		

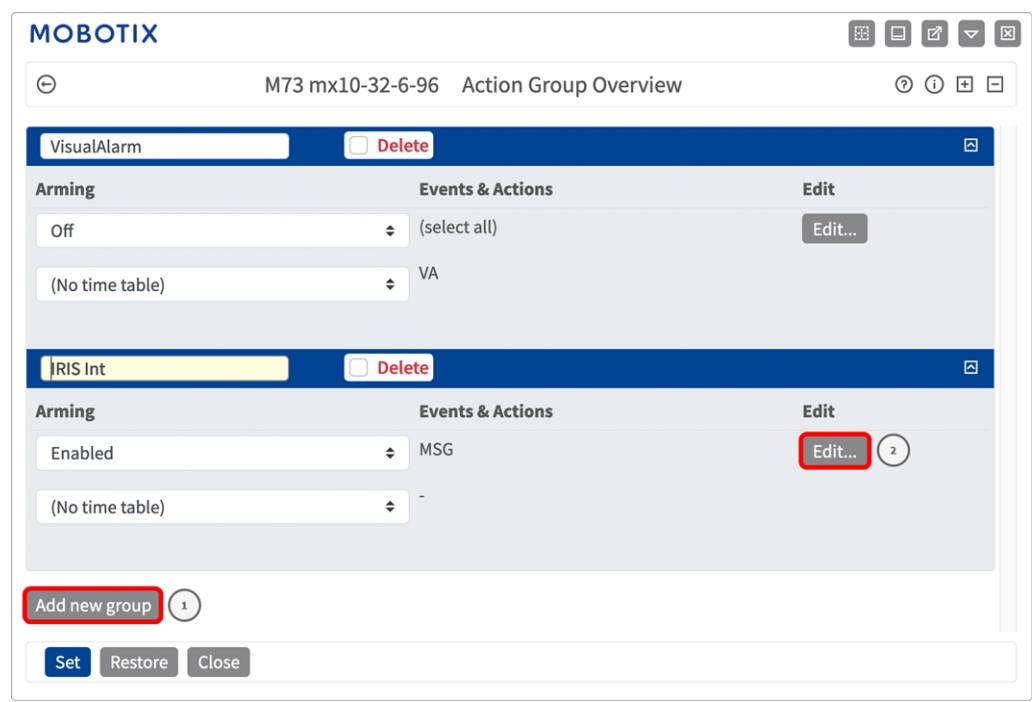
Set Factory Restore Close

Action handling - Configuration of an action group

CAUTION! To use events, trigger action groups or record images the general arming of the camera must be enabled ([http\(s\)://<Camera IP address>/control/settings](http(s)://<Camera IP address>/control/settings))

An action group defines which action(s) is (are) triggered by the Irisity IRIS Core Intrusion App event.

- In the camera web interface, open: **Setup Menu / Action Group Overview** ([http\(s\)://<Camera IP address>/control/actions](http(s)://<Camera IP address>/control/actions)).



2. Click **Add new group**① and give a meaningful name.
3. Click **Edit**② , to configure the group.

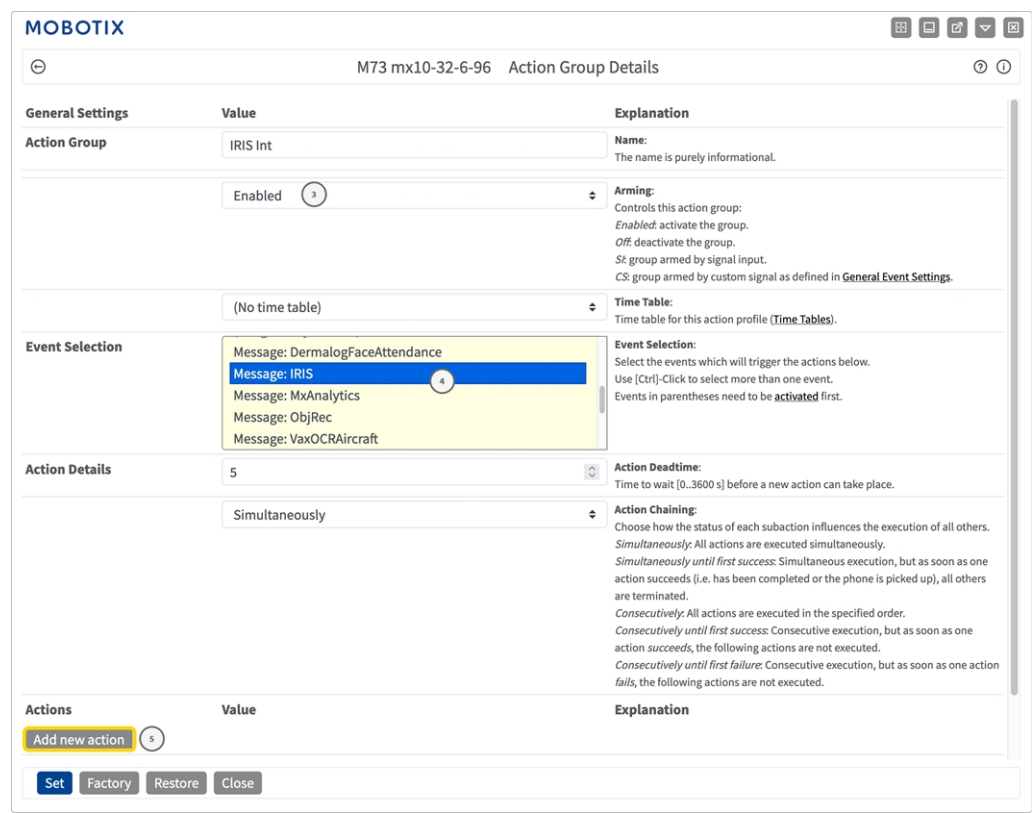
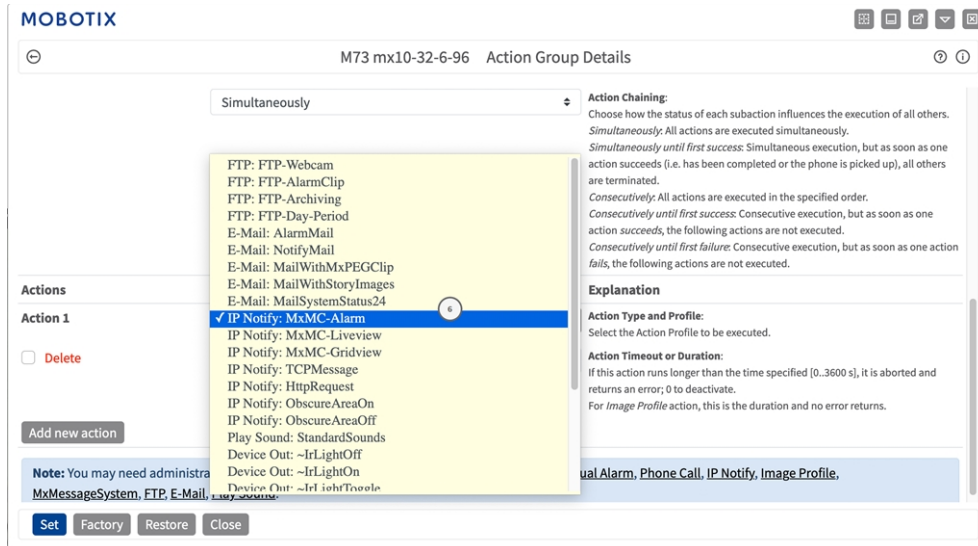


Fig. 11: Configuring an Action Group

4. Enable **Arming**③ of the Action Group.
5. Select your message event in the **Event selection** list ④ . To select multiple events, hold the shift key.
6. Click **Add new Action**⑤ .
7. Select a proper action from list **Action Type and Profile**⑥ .



NOTE! If the required action profile is not yet available, you can create a new profile in the Admin Menu sections "MxMessageSystem", "Transfer Profiles" and "Audio and VoIP Telephony".

If necessary, you can+ add further actions by clicking the button again. In this case, please make sure that the "action chaining" is configured correctly (e.g. at the same time).

8. Click on the **Set** button at the end of the dialog box to confirm the settings.

Action settings - Configuration of the camera recordings

1. In the camera web interface, open: **Setup Menu / Event Control / Recording**([http\(s\)/<Camera IP address>/control/recording](http(s)/<Camera IP address>/control/recording)).

MxMessageSystem: Processing the automatically generated app events

Action settings - Configuration of the camera recordings

MOBOTIX M73 mx10-32-6-96 Recording

General Settings

Value	Explanation
Arming: Enabled (1)	Arm Recording: Controls camera recording. <i>Enabled:</i> activate recording. <i>Off:</i> deactivate recording. <i>St:</i> recording armed by signal input. <i>CS:</i> recording armed by custom signal as defined in General Event Settings . <i>From Master:</i> copies recording arming state from master camera.
(No time table)	Time Table Profile: Time table profile for time-controlled recording (Time Tables).

Storage Settings

Value	Explanation
Recording (REC): Event Recording (2)	Recording Mode: Type of event and story recording. <i>Snap Shot Recording:</i> stores single JPEG pictures. <i>Event Recording:</i> stores stream files for every event using MxPEG codec. <i>Continuous Recording:</i> continuously streams video data to stream files using MxPEG codec. Events can be recorded with a higher frame rate using <i>Start Recording</i> , <i>Retrigger Recording</i> and <i>Stop Recording</i> .
Include audio	Record Audio Data: Store audio data in stream file if available. Enable and configure microphone .
Start Recording: Message: IRIS (3)	Start Recording: Select the events which will start recording. Use [Ctrl]-Click to select more than one event. Events in parentheses need to be activated first.
Max fps	Event Frame Rate: Recording speed if an event is detected, in frames per second.

Set (4) Factory Restore Close (5) More

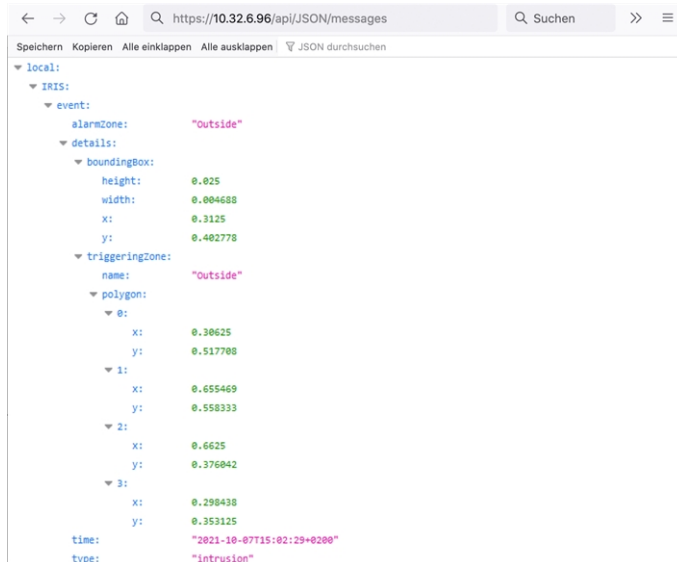
2. Activate **Arm Recording** ① .
3. Under **Storage Settings / Recording (REC)** select a **Recording mode** ② . The following modes are available:
 - Snap Shot Recording
 - Event Recording
 - Continuous Recording
4. In list **Start recording** ③ select the message event just created.
5. Click on the **Set** ④ button at the end of the dialog box to confirm the settings.
6. Click on **Close** ⑤ to save your settings permanently.

NOTE! Alternatively, you can save your settings in the Admin menu under Configuration / Save current configuration to permanent memory.

MxMessageSystem: Processing the meta data transmitted by apps

Meta data transferred within the MxMessageSystem

For each event, the app also transfers meta data to the camera. This data is sent in the form of a JSON schema within a MxMessage.



NOTE! To view the meta data structure of the last App event, enter the following URL in the address bar of your browser: `http(s)/IPAdresseOfYourCamera/api/json/messages`

Creating a Custom Message Event

1. Go to **Setup-Menu / Event Control / Event Overview**. In section **Message Events** the automatically generated message event profile is named after the application (e. g. IRIS).

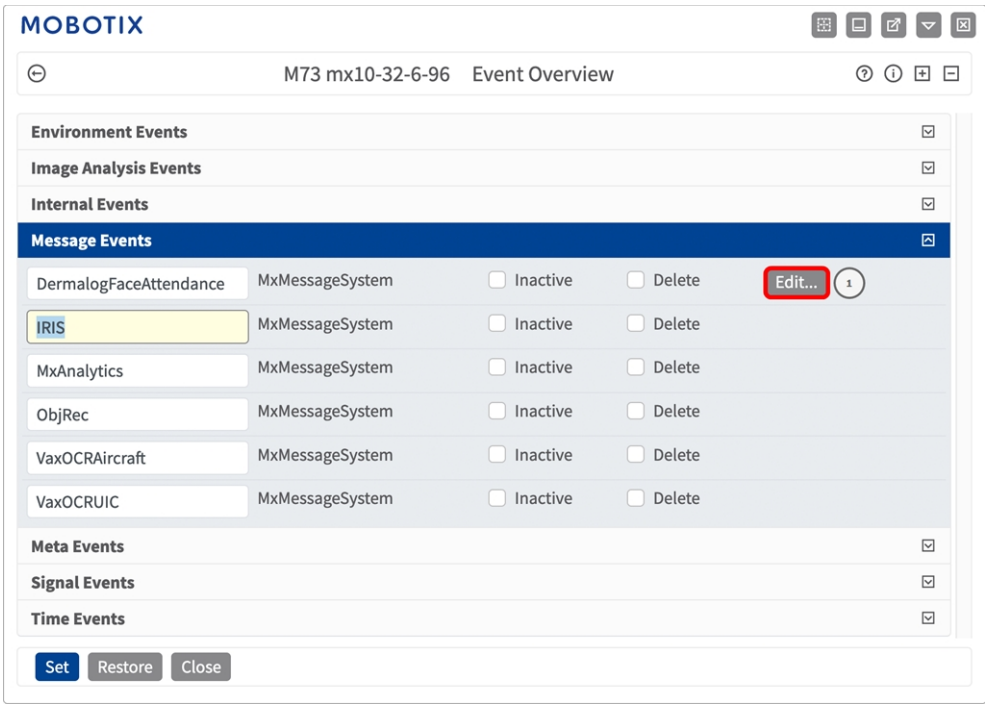


Fig. 12: Example: Generic message event from Irisity IRIS Core Intrusion App

- Click **Edit**^① to display a selection of all configured message events.

The screenshot shows the MOBOTIX Message Events configuration window. At the top, there's a header with 'M73 mx10-32-6-96 Message Events'. Below this, a list of events is shown, with 'IRIS' selected. The IRIS event settings are displayed in a form. The 'Event Sensor Type' is set to 'MxMessageSystem'. The 'Event on receiving a message from the MxMessageSystem' section is expanded, showing 'Message Name' as 'IRIS.event.type', 'Message Range' as 'Local', 'Filter Message Content' as 'JSON Comparison', and 'Filter Value' as 'intrusion'. The 'Filter Value' field is highlighted in yellow. At the bottom, there are buttons for 'Set', 'Factory', 'Restore', and 'Close'.

Fig. 13: Example: Intrusion message event

- Click on the event (e. g. IRIS) ^① to open the event settings.
- Configure the parameters of the event profile as follows:
 - **Message Name:** Enter the "Message Name" ^② according to the event documentation of the corresponding app (see [Examples for message names and filter values of the Irisity IRIS Core Intrusion App, p. 40](#))
 - **Message Range:**
 - **Local:** Default settings for the Irisity IRIS Core Intrusion App
 - **Global:** (MxMessage is forwarded from another MOBOTIX camera in the local network.
 - **Filter Message Content:**
 - **Generic Event:** "No Filter"
 - **Filtered Event:** "JSON Comparison"
 - **Filter Value:** ^③ see [Examples for message names and filter values of the Irisity IRIS Core Intrusion App, p. 40](#).

CAUTION! "Filter Value" is used to differentiate the MxMessages of an app / bundle. Use this entry to benefit from individual event types of the apps (if available).

Choose "No Filter" if you want to use all incoming MxMessages as generic event of the related app.

- Click on **Set**^④ at the end of the dialog box to confirm the settings.

Examples for message names and filter values of the Irisity IRIS Core Intrusion App

IRIS Intrusion Detection	MxMessage Name	Filter Value
Generic Event	IRIS	
Alarm zone event	IRIS.event.alarmZone	Name of alarm zone, e. g.: "Intrusion Zone 2"
Bounding box details	IRIS.event.details.boundingBox	Coordinates of bounding box corner points, e. g.: "height" : 00.5, "width" : 0.0256, "x" : 0.05, "y" : 0.4658)
Triggering zone details	IRIS.event.details.triggeringZone.polygon	Coordinates of triggering zone corner points, e. g.: [{ "x" : 0.456, "y" : 0.3569}, { "x" : 0.568, "y" : 0.5 } , ...]
Event type	IRIS.event.type	"intrusion" or "tampering"
Event subType	IRIS.event.subType	Subtypes of the event. E.g. possible subtypes for the a tampering event are "covered" or "redirected"
Event state	IRIS.event.state	State definition, e.g.: "resolved", "pointInTime" etc.
Event time	IRIS.event.time	Date string e. g.: "2023-06-19T09:40:47+0200"



EN_07/23

MOBOTIX AG • Kaiserstrasse • D-67722 Langmeil • Tel.: +49 6302 9816-103 • sales@mobotix.com • www.mobotix.com

MOBOTIX is a trademark of MOBOTIX AG registered in the European Union, the U.S.A., and in other countries. Subject to change without notice. MOBOTIX do not assume any liability for technical or editorial errors or omissions contained herein. All rights reserved. © MOBOTIX AG 2021