



Product Update - February 2023

MOBOTIX MOVE ALPR / MOBOTIX CLOUD / MOBOTIX Apps / P6 Sensor Modules



Table of contents

1. Overview of all News
2. MOBOTIX MOVE 2MP ALPR Cameras
3. MOBOTIX CLOUD - New Bridge, Update and new Prices
4. MOBOTIX Barcode Reader App
5. MOBOTIX Thermal Validation App
6. Vaxtor Genesis App
7. MOBOTIX P6 Sensor Modules (Update)
8. Important Links and Downloads

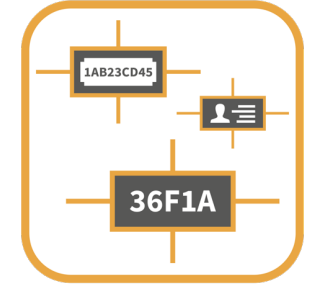
Notes: This document is intended for information and requirement planning purposes only for MOBOTIX partners and may not be published in this form (digitally or as a printout) - Delivery to commercial customers only - Prices plus VAT ex works Langmeil, Germany - Subject to change without notice - MOBOTIX assumes no liability for technical errors, misprints or omissions -
© MOBOTIX AG 2022 - MOBOTIX is a trademark of MOBOTIX AG registered in the European Union, the USA and other countries - All rights reserved.

MOBOTIX MSRP prices are recommended net prices ex works (EXW), ex factory in Germany. In some countries, MOBOTIX dealers have to apply locally higher sales prices due to import regulations/duties.

1.

QUICK OVERVIEW OF ALL NEW PRODUCTS

1. Quick Overview of all new Products - 1/2



MOBOTIX MOVE ALPR CAMERAS

The perfect all-in-one camera for license plate recognition and vehicle detection

- **ALPR and MMC functionality already integrated**
- Sony 2MP image sensor 1/2.8"
- Motorized lens in two versions: Standard and Distance
- MOBOTIX EverClear® Front Glass
- Incl. 64 GB SD card

► [DETAILS](#)

► [DATA SHEET](#)

MOBOTIX CLOUD Bridge 304+

New Bridge 304+ for even more performance and better image quality

- Supports up to 20 cameras with 4MP image resolution
- High Performance SSD
- Dual Gigabit
- Fanless metal housing
- Extra durable construction

► [DETAILS](#)

► [DATA SHEET](#)

MOBOTIX Barcode Reader App

Reliable barcode recognition for logistics, industry and individual requirements

- Supports all common 1D, 2D and Stacked barcode types (QR Code, Data Matrix Code, Dot Code, etc.)
- Optimized to compensate for distorted, damaged or faded barcodes
- Captures one or more barcodes in motion
- Up to 20 barcodes within the camera image

► [DETAILS](#)

► [DOWNLOAD](#)

MOBOTIX Thermal Validation App

Reliable results for the use of thermal cameras

- Filters out vehicles as a non-critical heat source.
- Reduces false alarms
- Can be run in parallel with other apps.
- Expansion of temperature measurement functions
- **Available end of March 2023**

► [DETAILS](#)

► [DOWNLOAD](#)

Vaxtor Genesis App

All round best app for character recognition.

- Recognizes industry codes, ID cards, labels, serial numbers, etc.
- Upper case letters and numbers from 2 to 24 characters
- Securing by following grammar rules and basic parameters
- Easy integration through support of standard interfaces (TCP/IP, HTTP, JSON, XML, etc.)
- **Beta phase finished!**

► [DETAILS](#)

► [DOWNLOAD](#)

1. Quick Overview of all Updates - 2/2



White Paper Thermal

The operation of thermal imaging technology and their usefulness in various Operational Areas - Emphasis: Fire protection, quality assurance and Security

- Description of thermal technology and its possibilities
- Practical examples and case studies
- Background information

▶ [DOWNLOAD](#)

MOBOTIX CLOUD

Update and new prices

- Audio via SIP
The audio functions of MOBOTIX 6th and 7th generation cameras can now also be used in simplex and full duplex mode with MOBOTIX CLOUD.
- New prices and subscription models
As announced, there will be new prices from March 1, 2023, and additional subscription models at the request of users.

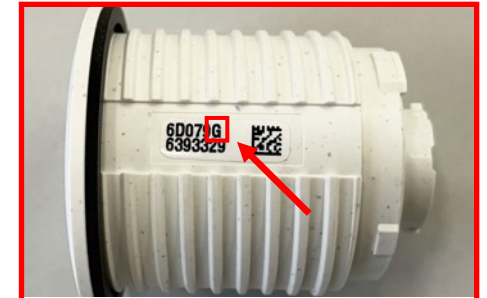
▶ [DETAILS](#)

MOBOTIX HUB DevicePack

Updating the supported cameras in MOBOTIX HUB

- The new MOBOTIX HUB DevicePack contains all current device drivers of the MOBOTIX cameras and those of our market competitors. We recommend this update to all users to ensure long-term compatibility of software and cameras.

▶ [DOWNLOAD](#)



MOBOTIX P6 Sensor Module

Temperature limitation for P6 camera modules has been solved.

Due to a technical change and relaxation on the supplier market, we are able to lift the restriction announced in December and to fulfill the original temperature range of -40°C to + 60°C again.

An important note:

A firmware update is important for the operation of new sensor modules.

▶ [DETAILS](#)

Invitation to the Webinar

Join us live

and get Answers to your Questions.

Our Campus Team is holding an information session on this product announcement with important background information. You will also have the opportunity to submit your questions and suggestions here. We look forward to your participation!

Recordings of our webinars and many other courses can also be found free of charge at <https://www.mobotix-ecampus.com>. You do not have access to the **MOBOTIX eCampus** yet? Then send us a short email to ecampus@mobotix.com

SAVE THE DATE:



Estimated duration approx. 1 hour

English

8:30 a.m. and 4:00 p.m. CET

▶ [REGISTER NOW](#)

German

2:00 p.m. CET

▶ [REGISTER NOW](#)

SAVE THE DATE:



Estimated duration approx. 1 hour

English

8:00 a.m. and 4:00 p.m. CET

▶ [REGISTER NOW](#)

German

9:00 a.m. CET

▶ [REGISTER NOW](#)

1. Quick Overview of all new Products – What do you think?

YOUR FEEDBACK IS WELCOME

How do you like the latest MOBOTIX products?

When we launch new products, it is the culmination of a long development process based on the needs of the market and our understanding of how automation and AI can help businesses around the world.

Your feedback is therefore very important, and we ask you to share your thoughts anonymously via the link below.

Thank you very much!

▶ **GIVE FEEDBACK**

(time required max. 2 minutes)

2.

MOBOTIX MOVE 2MP ALPR CAMERAS

2. MOBOTIX MOVE 2MP ALPR Cameras



The compact plug & play high Performance Camera Especially for License Plate Recognition

By combining Deep Learning and classic OCR technology, the new MOBOTIX MOVE 2MP ALPR camera offers extremely reliable vehicle identification and classification capabilities. The camera itself is of the usual quality that MOBOTIX stands for: **robust, durable, low-maintenance**. Infrared illumination and EverClear coating make the camera usable around the clock and even in extreme weather conditions.

Application possibilities with partial or full automation:

- From stopped vehicles until fast moving vehicles, urban roads and highways
- Access control for authorized vehicles, refusal for unauthorized ones
- Automated opening and closing of gates and barriers
- Warning when vehicles appear on the blacklist
- Statistics and evaluation of meta data for marketing and sales:
Where do my customers come from? Which vehicle class/brand/color and how often?
Rate of returning visitors vs. new customers, etc.
... and many other individual applications

No license costs, product activation or additional software - as usual with MOBOTIX MOVE cameras: Simply Plug & Play.



The powerful VAXTOR software for License Plate Recognition and vehicle Make, Model and Color recognition is already integrated and activated.

No additional license costs!

THE MOST IMPORTANT:

- Real-time license plate recognition for > **150 countries**
- **Metadata:** Car make, model and color, date, time, direction of movement, detailed image of the license plate.
- **Detection rate ~99%**
- Suitable for speeds up to **200 km/h**
- Permission and blocking list
- Two models to choose from for different distances
- **Luminous lens with Sony CMOS sensor**
- 100% NDAA compliant
- For day and night application
- EverClear coating
- IP67, IK10, temperature -55 to 60 °C (-67 to 140 °F), MTBF: 95,000 h

2. MOBOTIX MOVE 2MP ALPR Cameras



The compact plug & play high Performance Camera Especially for License Plate Recognition

Differences	Mx-VB1A-2-IR-ALPR	Mx-VB1A-2-IR-D-ALPR
Object removal	up to 18 m	up to 35 m
Lens and angle of view	Motorized Varifocal Lens F1.6 - F2.9: 2.7 to 12 mm, H: 102.1°-31.5°, V: 70.3°-22.7°	Motorized Zoom Lens F1.6 - F2.4: 9 to 22 mm, H: 36.1°-15.4°, V: 19.8°-8.8°
IR Emitter	up to 60 m	up to 60 m
Speed (solely due to the angle of view, not influenced by hardware or software).	0 - 50 km/h	0 - 200 km/h
Areas of application	<ul style="list-style-type: none"> • Accesses • Barriers parking facilities • E-charging points • Smart Cities • Market research 	<ul style="list-style-type: none"> • As standard plus: • Multi-lane flowing traffic in the city, on interstates and highways. • Greater distance between object and camera mounting location • High-speed application • All applications that require a small viewing angle and maximum range.

Fields of application

- Parking management
- Access control
- Intelligent safety monitoring
- Smart Cities
- E-Mobility
- Internal market research
- etc.

▶ [LEARN MORE](#)

▶ [DATA SHEET](#)

▶ [QUICK INSTALLER](#)



▶ [USER MANUAL](#)




Plates



Date	Plate	Image	Formatted	Country	Direction
11.8.2022, 14:20:58	P O1		P O1		Getting closer
11.8.2022, 14:20:56	JSU		JSU		Unknown
11.8.2022, 14:20:55	J SD		J SD		Unknown
11.8.2022, 14:20:52	EH P		EH P		Unknown
11.8.2022, 14:20:51	KSY		KSY		Unknown
11.8.2022, 14:20:36	JJE		JJE		Getting closer
11.8.2022, 14:20:23	F C		F C		Unknown


 Refresh:

5 items 

Description

Example highway: License plates are captured across both lanes and at high speeds. The **ROBOTIX MOVE VB-2-IR-D-ALPR** distance model is ideal for this angle of view.





Description

Example city traffic: A street or the entrance to the site can be captured over its full width. The standard **MOBOTIX MOVE VB-2-IR-ALPR** model is optimized for this application.



Description

Example of city traffic: A street or the entrance to the site can be detected over its full width. The recognized license plate is displayed as a section at the bottom right.

works (EXW), ex works in Germany. In some countries, MOBO FX distributors have to apply locally higher sales prices due to import regulations/duties.



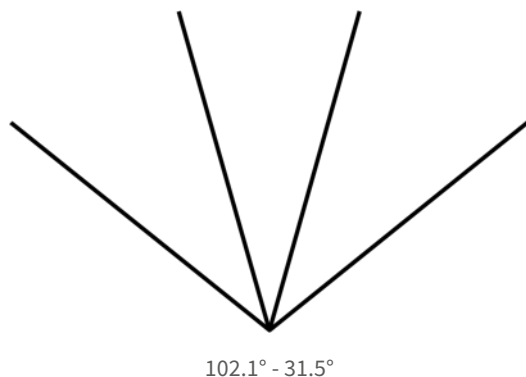
Description

Example city traffic: A street or the entrance to the site can be captured on its full width. The generated metadata, such as make, class, model and color, appear in the top line of the image.

2. MOBOTIX MOVE 2MP ALPR Cameras - Ordering Information for Standard Model

MOBOTIX MOVE 2MP ALPR Cameras - Standard Model

Model name Order number	Description
MOBOTIX MOVE ALPR Vandal Bullet Network Camera VB-2-IR-ALPR (car license plate recognition) Mx-VB1A-2-IR-ALPR	MOBOTIX MOVE ALPR Vandal Bullet Network Camera VB-2-IR-ALPR (car license plate recognition) - integrated professional international license plate recognition for stationary and slow moving vehicles up to 18m distance - incl. MMC (make, model, color -recognition) - ALPR license key pre-installed - Max. Image resolution: 2 MP / 1080p (Full-HD), 1/2.8" Progressive CMOS (SONY) - Weatherproof ONVIF S/G/T/M vandal-proof bullet camera with integrated IR LEDs (up to 60m) for day and night use - Automatic switching from color to B/W image (mechanical IR cut filter) - Light sensitivity: color 0.02lx, B/W: 0.001lx, IR: 0lx - Remote zoom/focus - Motorized varifocal lens (F1.6-F2.9: 2.7 to 12 mm, angle of view H: 102.1°-31.5°, V: 70.3°-22.7°), auto-iris with automatic adjustment to changing light situations - Video codecs: H.264, H.265 MJPEG (up to 4 video streams simultaneously) - True WDR (130 dB) - Max. Frame rate: 2 MP H.264, H.265 @ 30 fps; MJPEG: 1080p @ 30 fps - Bi-directional audio (line in/out) - Alarm I/O - 64 GB SD card pre-installed - Power supply: PoE IEEE802.3af, class 0, max 12.95 watt, DC12V, 15.59 watt, AC24V, max 13.31 watt, max 25.08 VA - IP67, IK10 - Ambient temperature -55 to 60 °C (heater On), Rel. humidity 10 to 90% non-condensing - Hardened and "self-cleaning" anti-reflective camera front glass coating with MOBOTIX EverClear - MTBF: 95,000h - Warranty: 5 years.

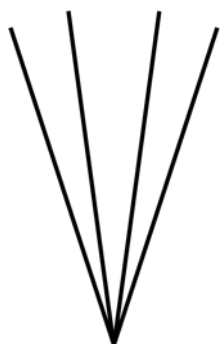


*MOBOTIX MSRP prices are recommended net sales prices Ex Works (EXW), ex works in Germany. In some countries, MOBOTIX distributors have to apply locally higher sales prices due to import regulations/duties.

2. MOBOTIX MOVE 2MP ALPR Cameras - Ordering Information for Distance Model

MOBOTIX MOVE 2MP ALPR Cameras - Distance Model

Model name Order number	Description
MOBOTIX MOVE ALPR Vandal Bullet Network Camera VB-2-IR-D-ALPR (car license plate recognition) Mx-VB1A-2-IR-D-ALPR	MOBOTIX MOVE ALPR Vandal Bullet Network Camera VB-2-IR-D-ALPR (car license plate recognition) - integrated professional international license plate recognition for slow and fast moving vehicles up to 35m distance - incl. MMC (make, model, color -recognition) - ALPR activation license key pre-installed - Max. Image resolution: 2 MP / 1080p (Full-HD), 1/2.8" Progressive CMOS (SONY) - Weatherproof ONVIF S/G/T/M vandal-proof bullet camera with integrated IR LEDs (up to 60m) for day and night use - Automatic switching from color to B/W image (mechanical IR cut filter) - Light sensitivity: color 0.02lx, B/W: 0.001lx, IR: 0lx - Remote zoom/focus - Motorized zoom lens (F1.6-F2.4: 9 to 22 mm, angle of view H: 36.1°-15.4°, V: 19.8°-8.8°), auto-iris with automatic adjustment to changing light situations - Video codecs: H.264, H.265 MJPEG (up to 4 video streams simultaneously) - True WDR (130 dB) - Max. Frame rate: 2 MP H.264, H.265 @ 30 fps; MJPEG: 1080p @ 30 fps - Bi-directional audio (line in/out) - Alarm I/O - 64 GB SD card pre-installed - Power supply: PoE IEEE802.3af, class 0, max 12.95 watt, DC12V, 15.59 watt, AC24V, max 13.31 watt, max 25.08 VA - IP67, IK10 - Ambient temperature -55 to 60 °C (heater On), Rel. humidity 10 to 90% non-condensing - Hardened and "self-cleaning" anti-reflective camera front glass coating with MOBOTIX EverClear - MTBF: 95,000h - Warranty: 5 years.



102.1° - 31.5°

*MOBOTIX MSRP prices are recommended net sales prices Ex Works (EXW), ex works in Germany. In some countries, MOBOTIX distributors have to apply locally higher sales prices due to import regulations/duties.

3.

MOBOTIX CLOUD

New Bridge
Cloud Update
New Prices

3. MOBOTIX CLOUD - Bridge Model 304+



More Performance. More Cameras. More Possibilities. Reliably robust.

The new MOBOTIX CLOUD Bridge 304+ convinces with significant Improvements in all Areas.

Reliability is one of the key issues in video surveillance. With growing demands and data volumes at the same time, components are needed that can meet these challenges. Just like the new MOBOTIX CLOUD Bridge 304+.

MODEL	Bridge 304	Bridge 304+
Max. IP cameras (4MP)	6 @ 4 MP	20 @ 4MP
Max. Analytics Count	5	5
Weight per unit	1.45 lbs 658 g	2.65 lbs 1200 g
Dimensions	125 x 127 x 50 mm	180 x 127 x 64 mm
Operating temperature range	0 - 35 C / 32 - 95 F	-10 - 50 C / 14 - 122 F
Certifications	FCC, UL, PSE, CE, CCC (S&E), REACH, RoHS, C-Tick, NDAA	FCC, UL, PSE, CE, UKCA, NOM, RoHS, C-Tick, WEEE, NDAA

The new bridge offers the performance reserves to meet the requirements of today and also those of tomorrow.

THE MOST IMPORTANT:

- Supports up to 20 cameras with 4MP image resolution
- Status display
- Solid State Storage (SSD)
- Dual Gigabit
- Fanless metal housing
- Extra durable construction
- Extended temperature range

► [MOBOTIX COMMUNITY](#)

► [DATA SHEET](#)

3. MOBOTIX CLOUD - Bridge Model 304+

Ordering information

Model name Order number	Description
MOBOTIX CLOUD Bridge 304+ for up to 20 IP Cameras Mx-S-BRIDGEB-DT-20	High-security connection box for the MOBOTIX CLOUD VMS • Locally connected to the Internet and up to 20 ONVIF IP cameras at 4MP resolution • Cybersecure connection to regionally available MOBOTIX CLOUD data centers • Secure end-to-end encryption of all data stored and transferred in the system • No data loss in case of up to 2-day Internet outage: Integrated hard disk as a memory buffer in case of interrupted connection to the cloud • No data loss due to Internet bandwidth fluctuations: Automatic data buffering in the BRIDGE • Ultra flexible cloud data storage with individually selectable retention period (max. 5 years) • Compact, robust metal housing with an extended temperature range and fanless device design for maximum reliability thanks to SSD memory • Dimensions (LxWxH): 127 x 127 x 45 mm (5" x 5" x 1.75") • Connections: AC power supply (adapter included), 2x ETH (1x for PoE switch for local cameras, 1x for internet router), monitor and keyboard (optional) • Integrated display for status display such as the IP

*MOBOTIX MSRP prices are recommended net sales prices Ex Works (EXW), ex works in Germany. In some countries, MOBOTIX distributors have to apply locally higher sales prices due to import regulations/duties.



Full duplex Functionality now also in the Cloud

Connect now comfortably via SIP with the Audio Module of your Camera.

In order to be able to react immediately to an event, we now support the SIP audio connection to a MOBOTIX camera in MOBOTIX CLOUD. This makes it possible to take immediate action on an event observed by the camera, for example:

- **Gas Stations:** Unauthorized cell phone calls at a gas pump
- **Hard-to-see Areas:** addressing undesirable behavior
- **Technical Facilities:** 1:1 support with fast solution finding
- **Franchise Gastronomy:** compliance with standards in hygiene and service
- **Access Systems and Access Roads:** Identification, registration and problem solving

This means that the SIP capabilities of our IoT cameras are now also fully supported in the MOBOTIX CLOUD. There is no need for time-consuming SIP configuration.

THE MOST IMPORTANT:

- Simplex operation (Only hear what is happening on site)
- Full duplex operation (listening and speaking)
- Easy activation in the camera configuration and in MOBOTIX CLOUD
- The prerequisite is a 6th and 7th generation IoT camera with audio function.
- Available now at no extra cost!

► [MOBOTIX COMMUNITY](#)

► [LEARN MORE](#)

3. MOBOTIX CLOUD - New Prices and Subscriptions

The services of the cloud has been expanded, such as:



Please refer to our [price list](#) for all service components now available and the new prices.

4.

MOBOTIX BARCODE READER APP

4. MOBOTIX Barcode Reader App



Super accurate. Super effective. Simply super.

For safeguarding Processes and reliable Results in Warehousing, Logistics and Production.

We encounter barcodes everywhere, because in an increasingly complex world, they control the distribution of goods, secure processes and are the key to a great deal of information. Without barcodes, not much works. That's why high-performance readers are needed, such as the MOBOTIX Barcode Reader App on a MOBOTIX 7 camera.

Unlike commercial barcode readers and handheld scanners, this app is capable of capturing up to a whopping 20 barcodes within the camera image **simultaneously** and passing the results to the leading systems.

This app can take full advantage of the capabilities of a **MOBOTIX 7** camera: High frame rate with high image quality for **crystal clear display of** the camera image. Distortions, damages and barcodes that are difficult to recognize are **compensated** automatically and still read out with a very high recognition rate.

For camera based barcode reading this app is a must have!

THE MOST IMPORTANT:

- Supports all common 1D, 2D and Stacked barcode types (QR Code, Data Matrix Code, Dot Code, etc.)
- Optimized to compensate for distorted, damaged or faded barcodes
- Fast acquisition in motion
- Up to 20 barcodes within the camera image
- MOBOTIX events via MxMessageSystem
- Reporting via generic XML, JSON and MODBUS/TCP

▶ [YOUTUBE TUTORIAL](#)

▶ [LEARN MORE](#)

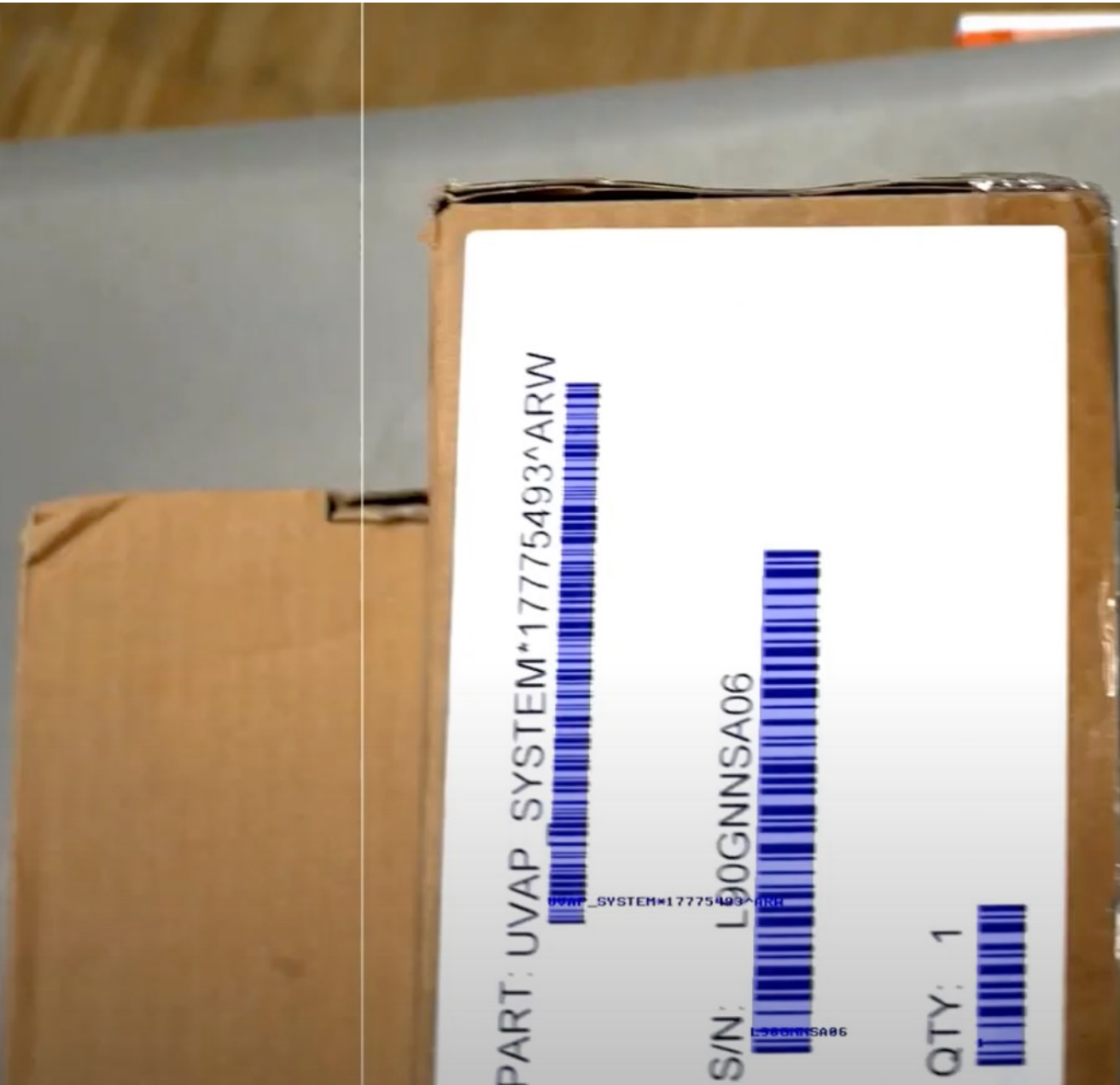
▶ [DOWNLOAD](#)

4. MOBOTIX Barcode Reader App

MOBOTIX BARCODE READER RUNNING

Last detected codes:

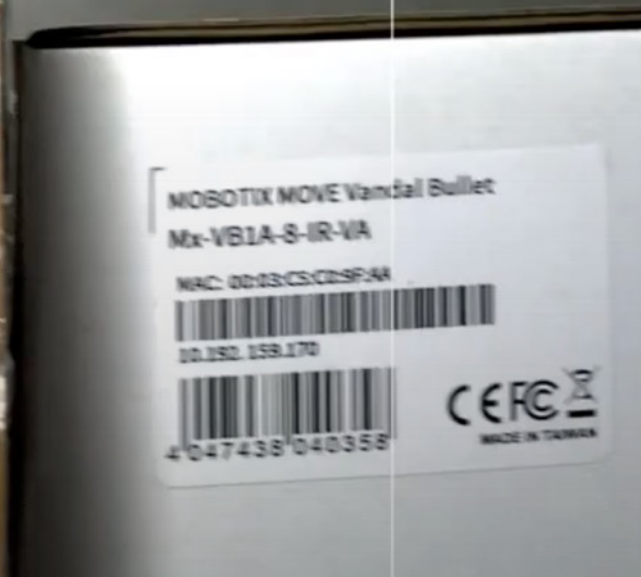
```
[10:42:01AM] HTTPS://H...4454
[10:42:03AM] AAFD822
[10:42:03AM] 10.28.95.199
[10:42:03AM] 4047438030984
[03:01:01PM] L90GNNSA06
[03:01:01PM] 1
[03:01:01PM] UVAP_SYST...^ARM
```



Description

Example shipping/goods receipt:

Automatic capture of goods incl. all applied barcodes, such as product code, serial number and quantity.



4. MOBOTIX Barcode Reader App

Ordering information

Model name Order number	Description
MOBOTIX Barcode Reader App Mx-APP-MX-BAR	<ul style="list-style-type: none">• The reader supports more than 40 common 1D, 2D and stacked barcode types (e.g. QR Code, Data Matrix Code, Dot Code, etc.)• Optimized for difficult barcode reads (e.g. damaged, faded or distorted barcodes, barcodes on difficult surfaces, DPM codes)• Fast reading of one or more barcodes in motion• Definition of up to 20 detection zones within the camera's field of view• MOBOTIX events via MxMessageSystem• Reporting of barcode reads via generic XML, JSON and MODBUS/TCP

*MOBOTIX MSRP prices are recommended net sales prices Ex Works (EXW), ex works in Germany. In some countries, MOBOTIX distributors have to apply locally higher sales prices due to import regulations/duties.

5.

MOBOTIX THERMAL VALIDATION APP

5. MOBOTIX Thermal Validation App



Reduce false Alarms on Thermal Cameras:

Detection and Filtering out of non-critical Heat Sources

Automated detection of dangerous heat sources can fail because false alarms are triggered too often in everyday situations. MOBOTIX now offers intelligent detection of the corresponding situation with the **Thermal Validation App**.

The following practical examples no longer trigger false alarms:

- **Waste Management Companies:** removal and processing by excavator or caterpillar
- **Logistics and Industry:** delivery traffic, forklifts or vehicles briefly linger in the monitored image area of the camera

Expand the capabilities of your thermal cameras and reliably automate even difficult situations.

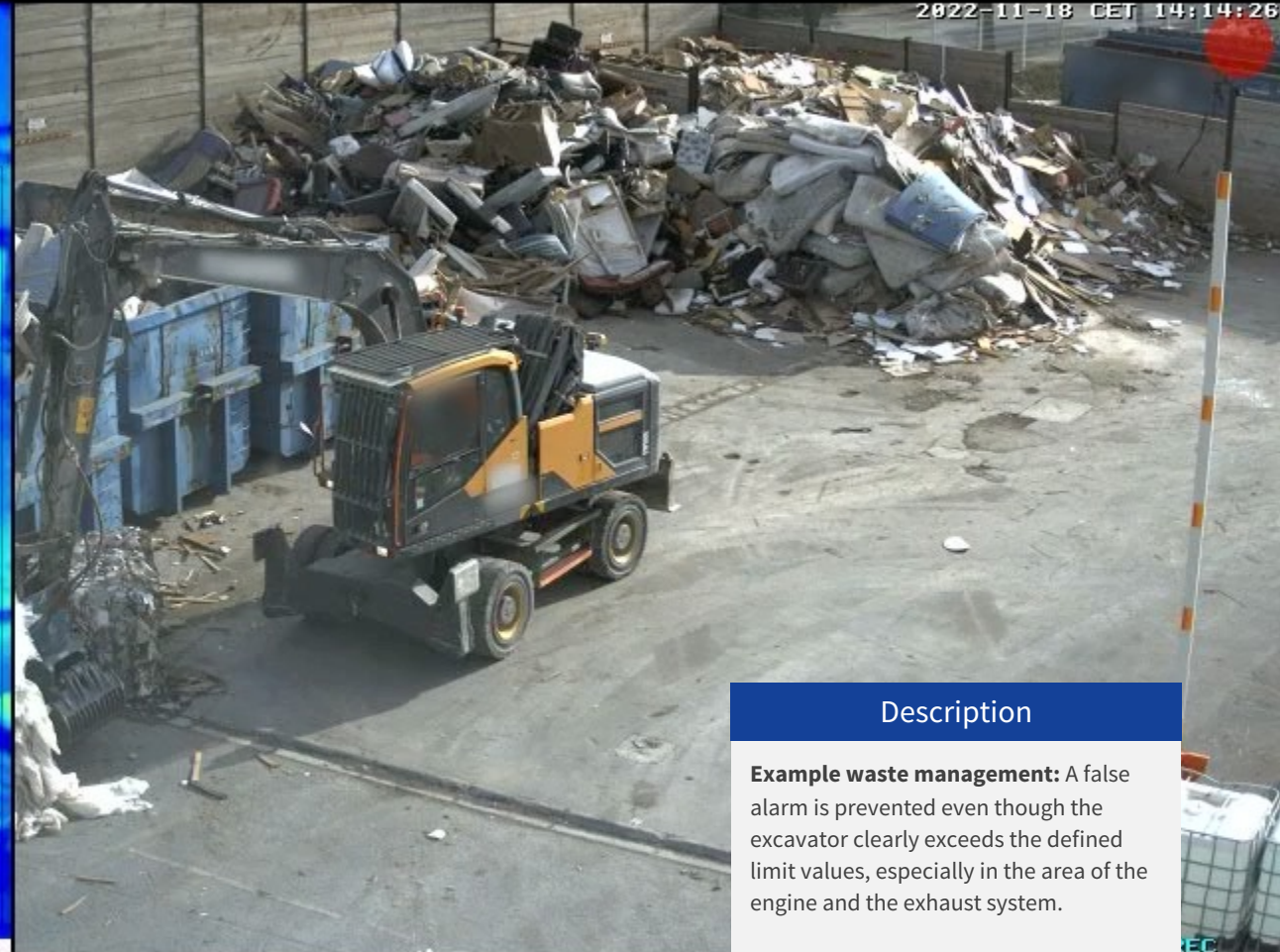
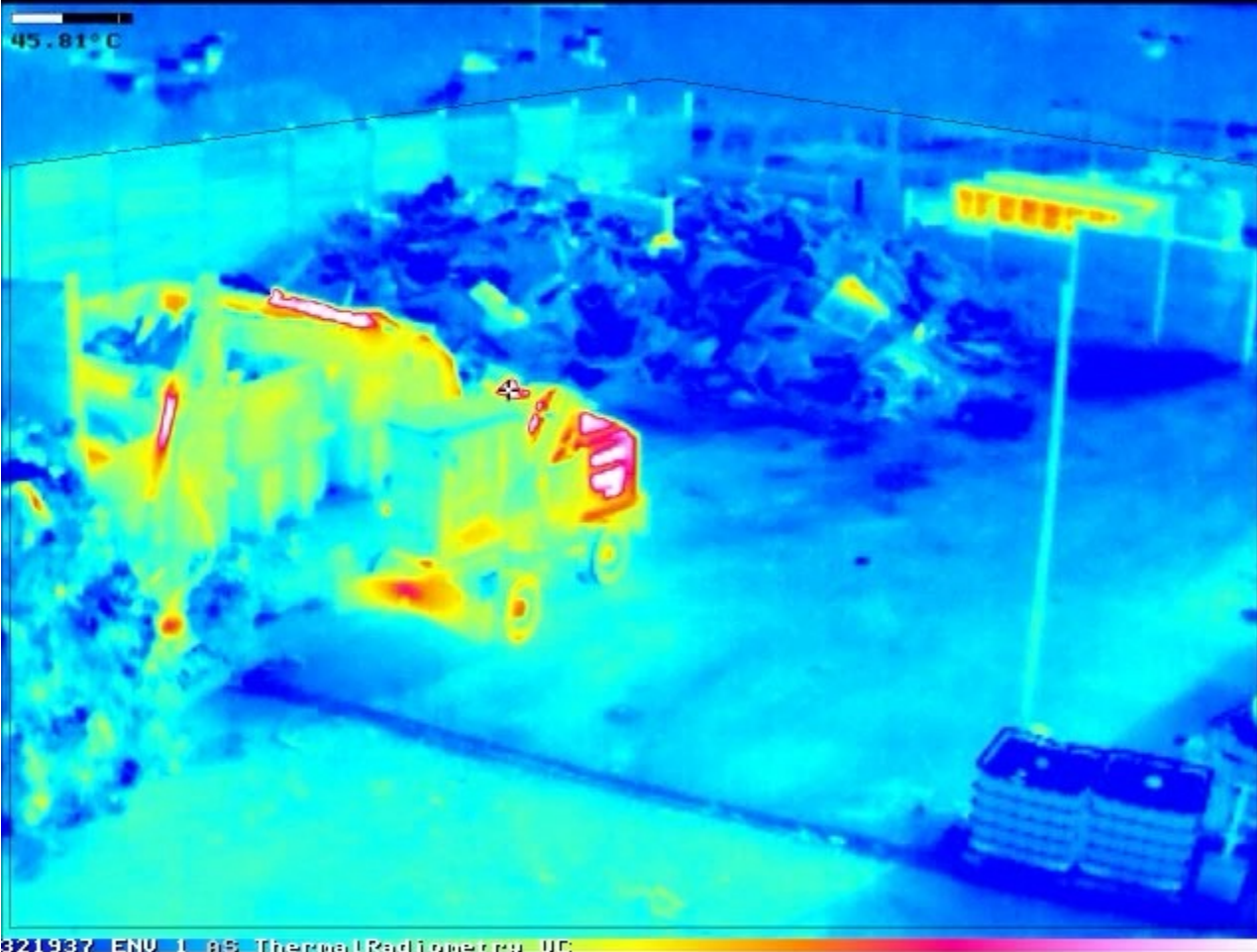
THE MOST IMPORTANT:

- Filters out vehicles as a non-critical heat source.
- Reduces false alarms
- Can be run in parallel with other apps.
- Extension of the temperature measurement functions
- The prerequisite is an app-enabled **MOBOTIX camera with Thermal TR module**.

▶ [LEARN MORE](#)

▶ [DOWNLOAD](#)

5. MOBOTIX Thermal Validation App



Description

Example waste management: A false alarm is prevented even though the excavator clearly exceeds the defined limit values, especially in the area of the engine and the exhaust system.

5. MOBOTIX Thermal Validation App

Ordering information

Model name Order number	Description
Name Mx-APP-MX-TVA	<ul style="list-style-type: none">• App optimizes MOBOTIX Thermal Radiometry cameras for use in the waste management and logistics sectors• Enables filtering of vehicles (e.g. construction equipment and forklifts) as a non-critical source of high temperatures (e.g. by measuring hot body parts such as the exhaust or engine cover)• Extension of the temperature measurement functions of MOBOTIX Thermal Radiometry cameras (CNPP 19005 compliant)• Definition of up to 20 temperature measurement areas within the camera's field of view• Individual calibration of each temperature measurement range (e.g. emissivity)• Temperature events when defined temperature thresholds are exceeded• Detection of physical manipulation of the thermal sensor (e.g. covering the sensor)• MOBOTIX events via MxMessageSystem• Transmission of temperature data and threshold status of measuring ranges via MODBUS/TCP and JSON / XML via HTTP(S)

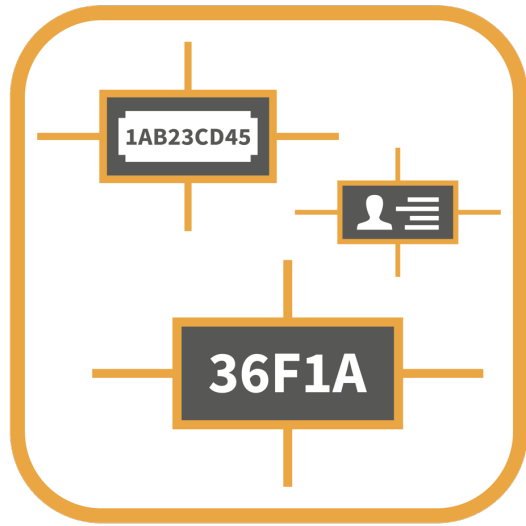
Available from the end of March 2023

*MOBOTIX MSRP prices are recommended net sales prices Ex Works (EXW), ex works in Germany. In some countries, MOBOTIX distributors have to apply locally higher sales prices due to import regulations/duties.

6.

VAXTOR GENESIS APP

6. Vaxtor Genesis App



Fast. Universal. Customizable.

The most flexible way to read information from camera images.

Vaxtor's new Genesis App is a high-performance application for automatically capturing any text and numeric codes consisting of uppercase Latin letters (A to Z) and Arabic numerals (0 to 9) with a total of 2 to 24 characters. In contrast to special applications that can only be used in a single field of application (car license plates, container codes, etc.), the Genesis app is almost universal and suitable for numerous other fields of application (see next page for details).

Main areas of application are:

- **Logistics:** automation and optimization of supply chain processes, tracking, documentation (especially for dangerous goods)
- **Security:** monitoring of vehicles, alarming, authentication, etc.
- **Public sector:** identification, logging and monitoring

Available now for all non-hemispherical MOBOTIX 7 cameras.

THE MOST IMPORTANT:

- Reading of almost any codes and texts
- Acquisition at very high speed
- Safeguarding through parameters and rules
- Supports Vaxtor Helix for consolidation of data
- Transfer of results via TCP/IP, HTTP-POST-XML, HTTP-POST-JSON etc.
- After beta phase now available as app for productive use.

▶ [LEARN MORE](#)

▶ [DOWNLOAD](#)

6. Vaxtor Genesis App - Application Areas

An app that can read
(almost) everything.

Industry codes:

With the capture of SIC codes, inventory numbers on company property, product labels or nameplates, etc., workflows can be automated and time-consuming manual checks can be completed in a fraction of the original time.

IDs:

The capture and verification of ID cards - whether ID cards, company ID cards or membership cards and the like - is usually a time-consuming manual process and often error-prone. With the Genesis app on a MOBOTIX camera, this becomes child's play.

Vehicle identification numbers (VIN/VIN):

Particularly in the automotive sector, nothing is possible without the VIN/IN, which allows a clear assignment to a vehicle. The Genesis app records this very long series of letters and numbers with high reliability and frequency.

Serial numbers:

High-quality industrial and consumer goods such as machines, vehicles, sports equipment, electrical appliances and so-called "white goods" have type plates and serial numbers. These can be automatically recorded and processed by using a MOBOTIX camera with Genesis App to monitor the process during production, inventory control or even disposal, etc. and to document the results seamlessly.

Labels:

Especially in logistics, ensuring complete and uninterrupted documentation of incoming and outgoing goods is extremely important and the basis of any automation in the area of EDI, warehouse logistics and inventory. The Genesis App is able to generate the corresponding proofs and protocols discreetly and in accordance with the respective data protection regulations.



6. Vaxtor Genesis App - Application Areas

Database

Code detail

Capture	Image	Code	Height	Confidence	Multicode
5/11/2021 16:22:28		6500			
5/11/2021 16:22:24		AAA0			
5/11/2021 16:22:17		6500			
5/11/2021 16:22:12		AAA0			
5/11/2021 16:22:07		65004204V	21	1866.09	
5/11/2021 16:22:01		AAA023112	15.67	2338.91	
5/11/2021 16:21:56		65004204V	20.11	2073.16	
5/11/2021 16:21:50		AAA023112	15.89	2107.44	
5/11/2021 16:21:45		65004204V	20.22	2141.5	
5/11/2021 16:21:40		AAA023112	16.33	1960.63	

Code detail: SPANA DOCUMENTO NACIONAL DE IDENTIDAD
 Name: RUIZETA RUIZETA, CARMEN
 Date: 5/11/2021 16:22:24
 Code: AAA023112
 Height: 15.11
 OCR Time: 1902.7

Areas of application:

- ID cards
- Warehouse and shipping labels
- Delivery bills
- Tickets and receipts
- Product codes
- Cash receipts
- Banknotes
- (Vehicle) Signage
- Agriculture (identification of livestock)
- Video OSD Text
- ...



Scene Requirements	
Recommended character height	20 - 50px
Maximum Vertical Angle	30°
Maximum Horizontal Angle	<25°
Maximum Tilt Angle	<25°

Video

Codes

Capture	Code	Image	Height	Confidence	Multicode
5/11/2021 18:52:58	AEBF3		21	98.0%	1
5/11/2021 18:52:55	3B970		19	99.2%	1
5/11/2021 18:52:43	3B970		19	99%	1
5/11/2021 18:52:42	49E28		26	99.2%	1
5/11/2021 18:52:32	49E28		26	99.2%	1
5/11/2021 18:52:21	49E28		26	99.2%	1
5/11/2021 18:52:11	49E28		26	99.2%	1

Code detail: DELIVERY AEBF3 Uber Eats
 Date: 5/11/2021 18:52:58
 ID: b0476995.7ed4312-b454-a9146115f1c2
 Code: AEBF3
 Height: 21
 OCR Time: 210

Codes Read: 28

OCR Video:1392x1040 pixels Stream:17 FPS / Display:9 FPS

Default

Video Description

Codes Read:

- 09:42:30 KWS3HZU
- 09:42:31 T19SLC
- 09:42:32 AKG50SD
- 09:42:35 EX02XW0
- 09:42:37 DV0GHZB
- 09:42:38 YU05TFF
- 09:42:40 RA56HWU
- 09:42:41 EU05EYK
- 09:42:42 8A52FMG
- 09:42:43 FMS1FBN
- 09:42:44 E7ALS
- 09:42:44 M77BRIM
- 09:42:45 KC078XD
- 09:42:46 A107B7F
- 09:42:48 KVS1ZCK
- 09:42:48 SD06VKJ
- 09:42:49 NMD5VWV
- 09:42:50 NDS5FNT
- 09:42:51 KKD5AEF
- 09:42:52 N344BUJ
- 09:42:53 K875CTH
- 09:42:54 Y96HEB
- 09:42:55 A052EKK
- 09:42:56 4WTK1
- 09:42:57 KWS3UJE
- 09:42:58 WJ05MYV
- 09:42:59 W39XKNO

Video Description:

- Software Uptime: < 1 ms
- System Time: 09:43:01
- Camera ID: 1
- Global Confidence: 99.6 %
- Characters Height: 19.4 [px]
- ROI Id: -1
- Multirate Rate: 6
- OCR Time: 24.7 [ms]
- Genesis Grammar: YES

6. Vaxtor Genesis App

Ordering information

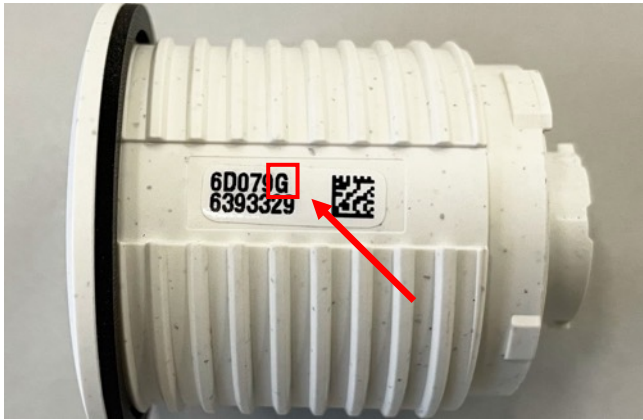
Model name Order number	Description
Name Mx-APP-VX-GEN	<ul style="list-style-type: none">• Vaxtor Generic Optical Character Recognition App, detection time per code: typ. 500 ms• Edge-based app solution with over 99% accuracy (scene-dependent) for MOBOTIX M73, S71, D71, v71 and p71 cameras• Generic optical character recognition for reading any combination of 2 to 24 uppercase Latin letters and/or Arabic numerals in up to three recognition areas/lines per scene• Custom specification of the code format used• MOBOTIX events via MxMessageSystem and detection protocol• Variety of integration options for further processing of the generated metadata• Two predefinable lists with max. 1000 entries each for individual actions (e.g. access granted/denied, alarm, etc.)

*MOBOTIX MSRP prices are recommended net sales prices Ex Works (EXW), ex works in Germany. In some countries, MOBOTIX distributors have to apply locally higher sales prices due to import regulations/duties.

7.

MOBOTIX P6 SENSOR MODULES (UPDATE)

7. MOBOTIX P6 Sensor Modules (Update)



Important Note for Mx6 Sensor Modules

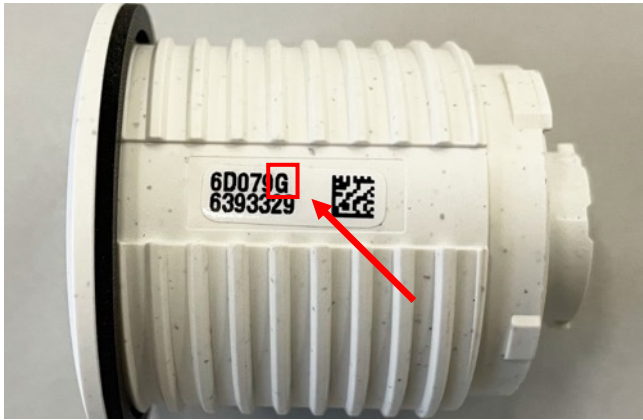
MOBOTIX offers 3 variants of the Mx6 sensor modules with different components. The different variants can be distinguished as follows:

- **X Image sensor modules:**
 - The addition "-X" is located directly after the product name on the packaging, e.g. "Mx-O-SMA-S-D016-X".
 - The label attached to the sensor module contains the suffix "G" after the type designation, e.g. "6D016X".
- **GWN image sensor modules:**
 - The addition "-GWN" is located directly after the product designation on the packaging, e.g. "Mx-O-SMA-S-D016-GWN".
 - The label attached to the sensor module contains the suffix "G" after the type designation, e.g. "6D016G".
- **LX9 image sensor modules:**
 - The addition "-LX9" is located directly after the product designation on the packaging, e.g. "Mx-O-SMA-S-N061-LX9".
 - The label attached to the sensor module contains the suffix "I" after the type designation, e.g. "6N061L".

THE MOST IMPORTANT:

- Sensor modules with the original suitability for temperatures from -40°C to +60°C (cold start -30°C) are available again.
- Modules with restricted temperature range will no longer be sold with immediate effect.
- **A firmware update is necessary in any case.**

7. MOBOTIX P6 Sensor Module (Update) - Technical Information



Firmware Support and technical Information

To use the sensor modules in M16, S16 or D16, the following steps must be performed:

- **GWN image sensor modules (no longer sold):**
 - The camera must first be updated with a software version 5.4.8.4, otherwise the sensor modules cannot be addressed.
 - The operating temperature of the GWN sensor is limited to -15°C to +60°C.
- **X Image sensor modules:**
 - The camera must first be updated with a software version from 5.4.8.4, otherwise the sensor modules cannot be addressed.
 - The operating temperature of the LX98 sensor is -40°C to +60°C (cold start -30°C).
- **LX9 image sensor modules:**
 - The camera must first be updated with a software version 5.4.6.6 or higher, otherwise the sensor modules cannot be addressed.
 - The operating temperature of the LX98 sensor is -40°C to +60°C (cold start -30°C).

THE MOST IMPORTANT:

In **general, we recommend to** install the latest firmware on the respective camera before commissioning a new camera module. This will reduce the time and costs associated with unnecessary support or returns.

Without the appropriate firmware, unforeseen functional limitations may occur or the module may not be recognized.

▶ [FIRMWARE DOWNLOAD](#)

7. MOBOTIX P6 Sensor Module (Update) - FAQ

Why are there 3 Variants?

Due to the current market and component situation, delivery times for certain components have become extremely long or even unavailable. Therefore, MOBOTIX has decided to work with different variants to avoid problems in the supply chain.

Why is the GWN limited in operating Temperature?

Due to the current market and component situation, a redesign with a new component with a restricted temperature range was necessary.

Is the Storage Temperature range of the GWN also affected?

No, only the operating temperature range is limited.

What about the lead Time on the Sensors?

GWN-based sensors will no longer be sold. The lead time for the other variants should normalize within Q1 2023.

Can I use a GWN, LX9 or X Sensor in an M15, S15 or D15 Camera?

No, these sensors are not supported by the previous camera series.

Can I combine the different Variants in the same Mx6 Camera?

Yes, they can be combined in one camera. The minimum FW support of the GWN sensor must be observed.

Can the GWN Limitation be fixed by a future Firmware Update?

No, this cannot be solved with a regular firmware update.

8.

IMPORTANT LINKS AND DOWNLOADS

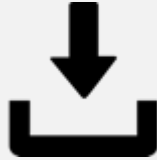
6. Important Links and Downloads

Products



[Overview of the entire MOBOTIX product range...](#)

Software



[Download software, firmware, apps and driver packages...](#)

Documentation



[Technical documentation, whitepapers, technical drawings and more...](#)

Trainings



[Current dates about webinars, trainings and events...](#)

Partner Toolbox



[Sales support such as brochures, presentations, videos, etc. can be found in our Toolbox, exclusively for MOBOTIX partners.](#)



[Open link to Apple AppStore](#)



[Open link to Google PlayStore](#)

[Website for PC / MAC](#)

Price List



[Current price lists on the MOBOTIX website including ETIM and DATANORM catalogs](#)

Feedback



[We live on the constant improvement. Therefore, please share your opinion with us...](#)

BeyondHuman**Vision**

MOBOTIX

MOBOTIX AG
Kaiserstrasse
67722 Langmeil
Germany

+49 6302 9816-0
info@robotix.com
www.robotix.com

MOBOTIX, the MOBOTIX Logo, MxControlCenter, MxEasy, MxPEG, MxDisplay and MxActivitySensor are trademarks of MOBOTIX AG registered in the European Union, the U.S.A. and in other countries • Subject to change without notice • MOBOTIX do not assume any liability for technical or editorial errors or omissions contained herein • All rights reserved • © MOBOTIX AG