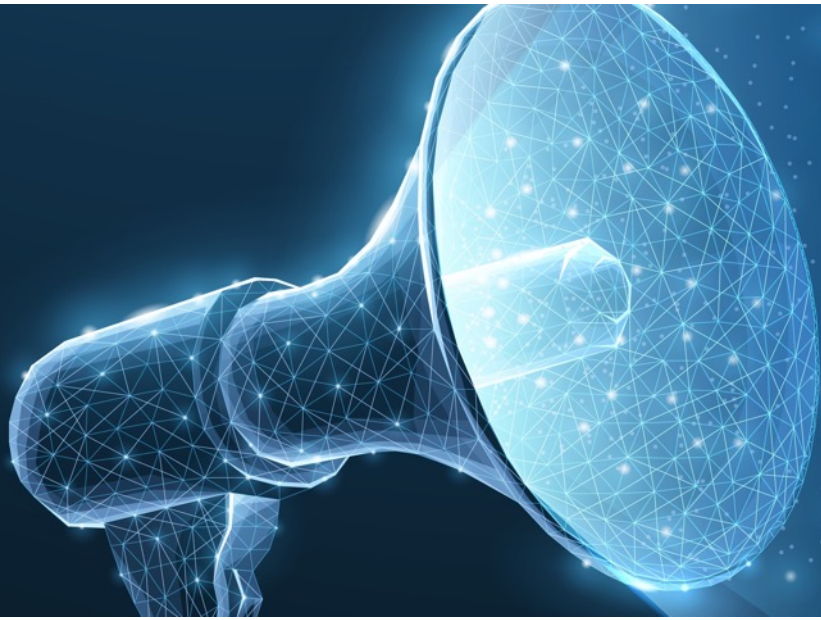


MOBOTIX PRODUCT NEWS - August 2023



- MOVE Multisensor 4x5MP
- MOVE PTZ SpeedDomes
- MOBOTIX 7 BlockFlexMounts
- VMS Updates
- Products EoL

Table of Contents

1. Quick Overview of all new Products
2. MOBOTIX MOVE Vandal Multisensor Camera 4x5MP
3. MOBOTIX MOVE PTZ SpeedDome Cameras
4. MOBOTIX 7 BlockFlexMounts for S74
5. VMS Updates (MOBOTIX HUB, LIVE App, CLOUD)
6. Products End of Life as of December 1, 2023 (EoL)
7. Important Links and Downloads

Notes: This document is intended for information and requirement planning purposes only for MOBOTIX partners and may not be published in this form (digitally or as a printout) - Delivery to commercial customers only - Prices plus VAT ex works Langmeil, Germany - Subject to change without notice - MOBOTIX assumes no liability for technical errors, typographical errors or omissions - © MOBOTIX AG 2023 - MOBOTIX is a trademark of MOBOTIX AG registered in the European Union, the USA and other countries - All rights reserved.

1.

QUICK OVERVIEW OF ALL NEW PRODUCTS

1. Quick Overview of all new Products



Mx-VM1A-20-IR-VA

MOBOTIX MOVE Vandal Multisensor - A camera that can handle the work of 4 cameras

- 4 manually adjustable image sensors with 5MP each
- 4 individual video streams or a combined 360° video stream with up to 20MP
- IR illumination
- ONVIF Profile S/G/T/M
- FIPS140-2 compliance
- NEMA 4 compliance
- EverClear dome
- Incl. 10 video analysis functions

▶ [DATA SHEET](#)



Mx-SD2A-230-LL-VA

MOBOTIX MOVE PTZ Camera Basic model

- Brand new SONY STARVIS II 2 MP image sensor
- 40x optical zoom
- Low-Light
- EverClear dome
- Incl. 10 video analysis functions

▶ [DATA SHEET](#)



Mx-SD2A-230-LL-FM-VA

MOBOTIX MOVE PTZ Camera for ceiling installation

- Brand new SONY STARVIS II 2 MP image sensor
- 40x optical zoom
- Low-Light
- EverClear dome
- Incl. 10 video analysis functions

▶ [DATA SHEET](#)



Mx-SD1A-540-IR-VA

MOBOTIX MOVE PTZ Camera for outdoor use

- Brand new SONY STARVIS I 5 MP image sensor
- 40x optical zoom
- Infrared illumination up to 300 m
- Incl. 10 video analysis functions

▶ [DATA SHEET](#)



Mx-SD1A-831-LIR-VA

MOBOTIX MOVE PTZ Camera with LiDAR technology

- Brand new SONY STARVIS I 8 MP image sensor
- LiDAR Autofocus System
- 31 optical zoom
- Infrared illumination up to 200 m
- Incl. 10 video analysis functions

▶ [DATA SHEET](#)

1. Quick Overview of all new Products



MOBOTIX P7 BlockFlexMount

Minimally visible. Maximum flexibility.

- BlockFlexMounts are sensor modules with minimal dimensions and prefabricated holes for individual integration
- Light guide sensor for automat. Day/night switching can only be used as long as it is not covered, e.g. by installation.
- Switching D/N then only possible manually in the firmware or time-controlled

Note on MOBOTIX software updates

Electronic systems also need to be updated from time to time in order to function optimally. You should not hesitate in doing so. Here are four good reasons why you should always consider software updates:

1. **Close security gaps:** Security is the most important reason for updating software immediately.
2. **New functions:** New features can be added by installing updates. Technology is constantly changing, and updates provide the latest features and improvements.
3. **Improving performance:** Not all software updates are security-related, but help to improve the performance of the software.
4. **Ensure compatibility:** For example, without updates, older video systems may not be able to work with newer video management systems.

Click here to go to the software download area on the MOBOTIX website:

<https://www.mobotix.com/de/software-downloads>

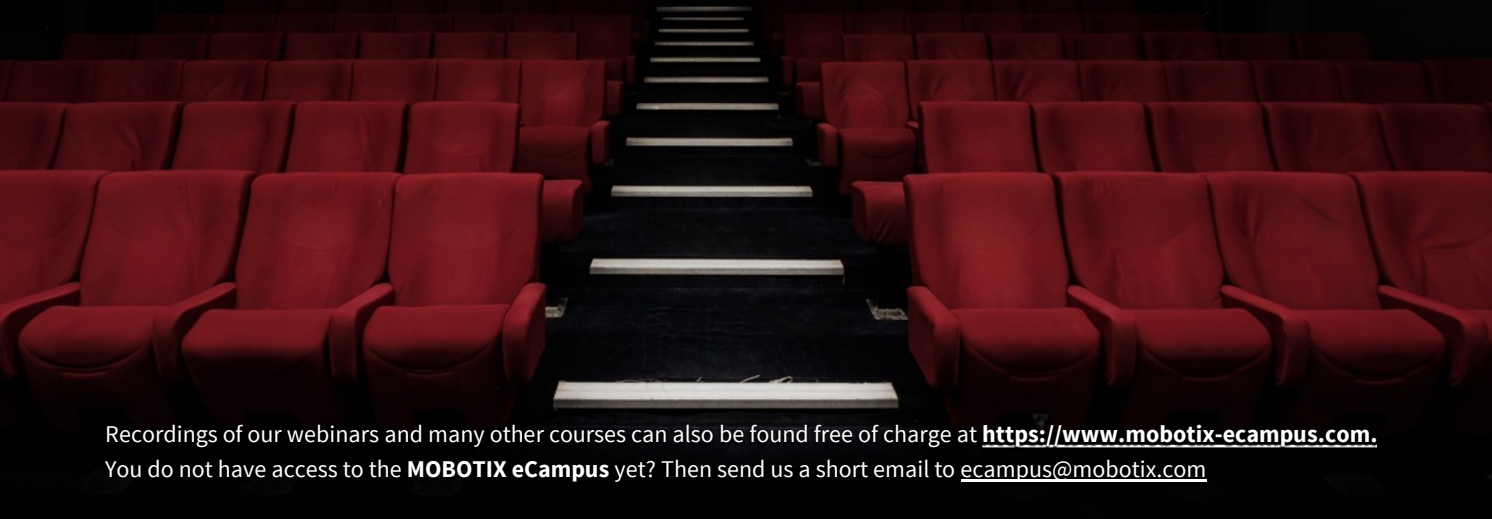
Latest updates 2023

- August 31: MOBOTIX HUB 2023 R2 & new DriverInstaller Software
MOBOTIX CLOUD App Version 8.3.3
- August 11: MOBOTIX LIVE App iOS V2.6.5 (App Store)
- August 4: MOBOTIX HUB Security Patches 2023-08-04
MOBOTIX NAS QVR Pro Server 1.2.5.1
- July 14: MOBOTIX HUB DriverInstaller 128a
- July 3: MOBOTIX HUB Plug-Ins 2023-07-03,
MOBOTIX HUB Security Patches 2023-07-03
- June 22: MOBOTIX MOVE releases mb20230419UX,
mb20230420NX, mb20230420UX_8G, mb20230426RP,
mb20230426RS, mb20230504SX,
- June 16: MX System Release 5.4.9.4 for MOBOTIX Mx6
Cameras x16/x26
- May 16: MxManagementCenter Release 2.7.2
- April 28, 23: MOBOTIX 7 MX System Release 7.3.2.76 -
Support for MQTT
- March 23: MOBOTIX MOVE NVR Release
mb20230301NVR64, mb20230301NVR816

Invitation to the Webinar

Join our Campus Team in this product announcement session with important insights.

We look forward to your participation and any questions or queries you have!



Recordings of our webinars and many other courses can also be found free of charge at <https://www.mobotix-ecampus.com>.
You do not have access to the **MOBOTIX eCampus** yet? Then send us a short email to ecampus@mobotix.com

SAVE THE DATE:



Estimated duration approx. 1 hour

English

08:30 and 16:00 CEST

▶ [REGISTER NOW](#)

German

14:00 CEST

▶ [REGISTER NOW](#)

SAVE THE DATE:



Estimated duration approx. 1 hour

English

08:00 and 16:00 CEST

▶ [REGISTER NOW](#)

German

09:00 CEST

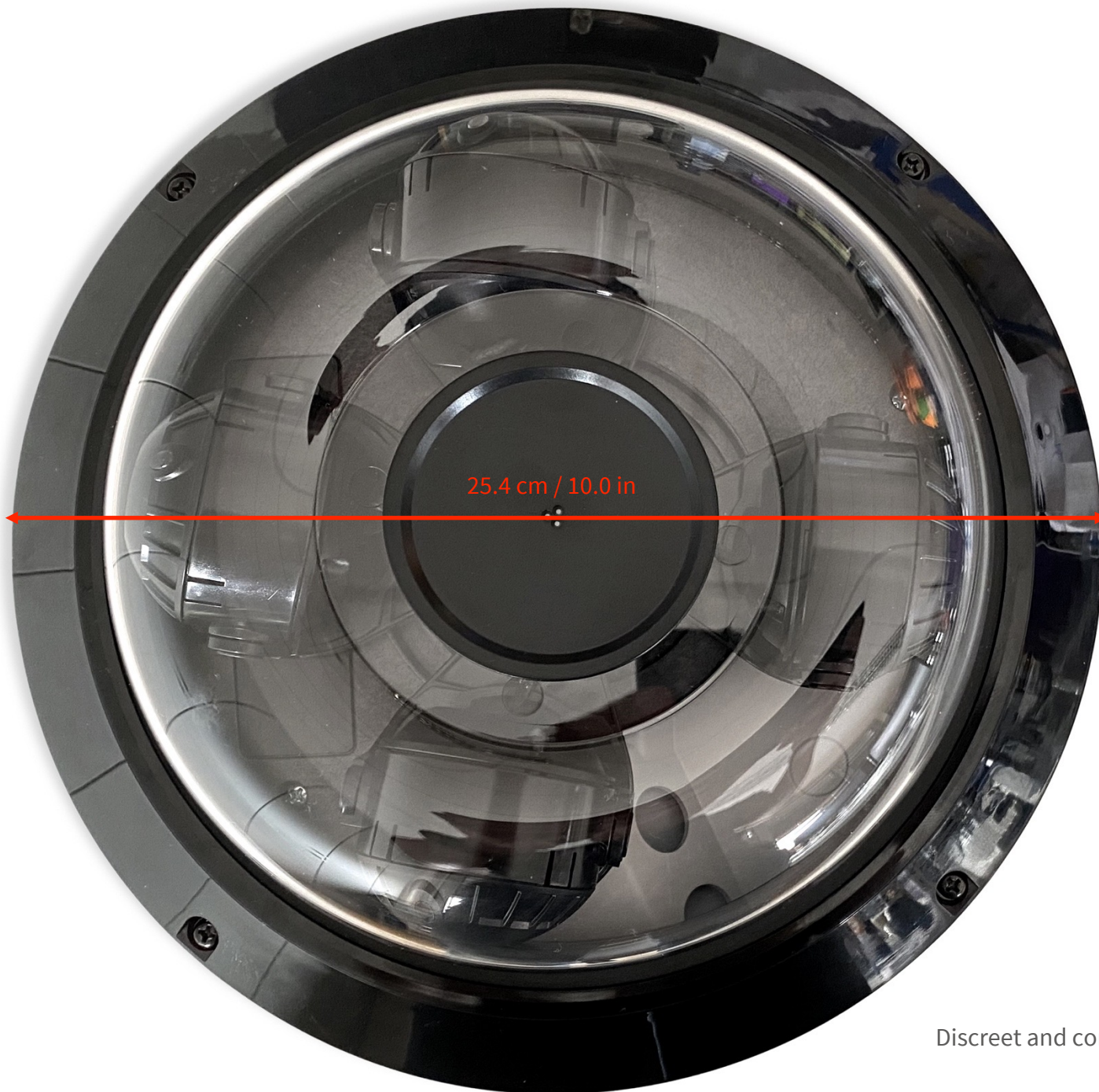
▶ [REGISTER NOW](#)

2.

MOBOTIX MOVE VANDAL MULTISENSOR CAMERA 4x5MP

MOBOTIX MOVE



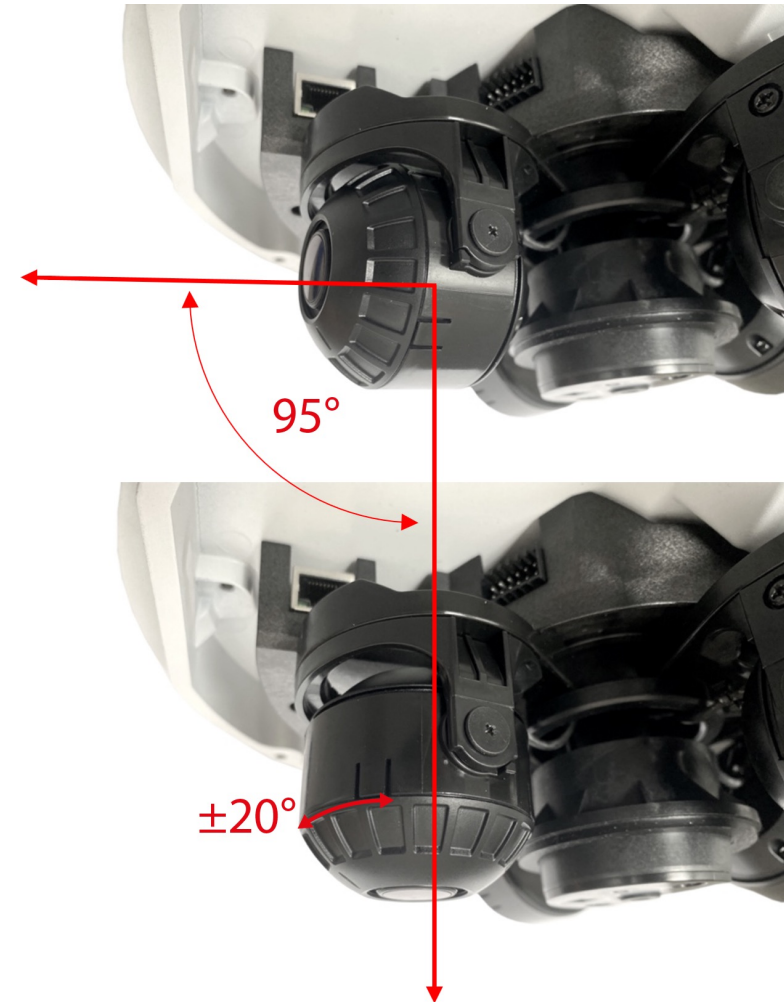
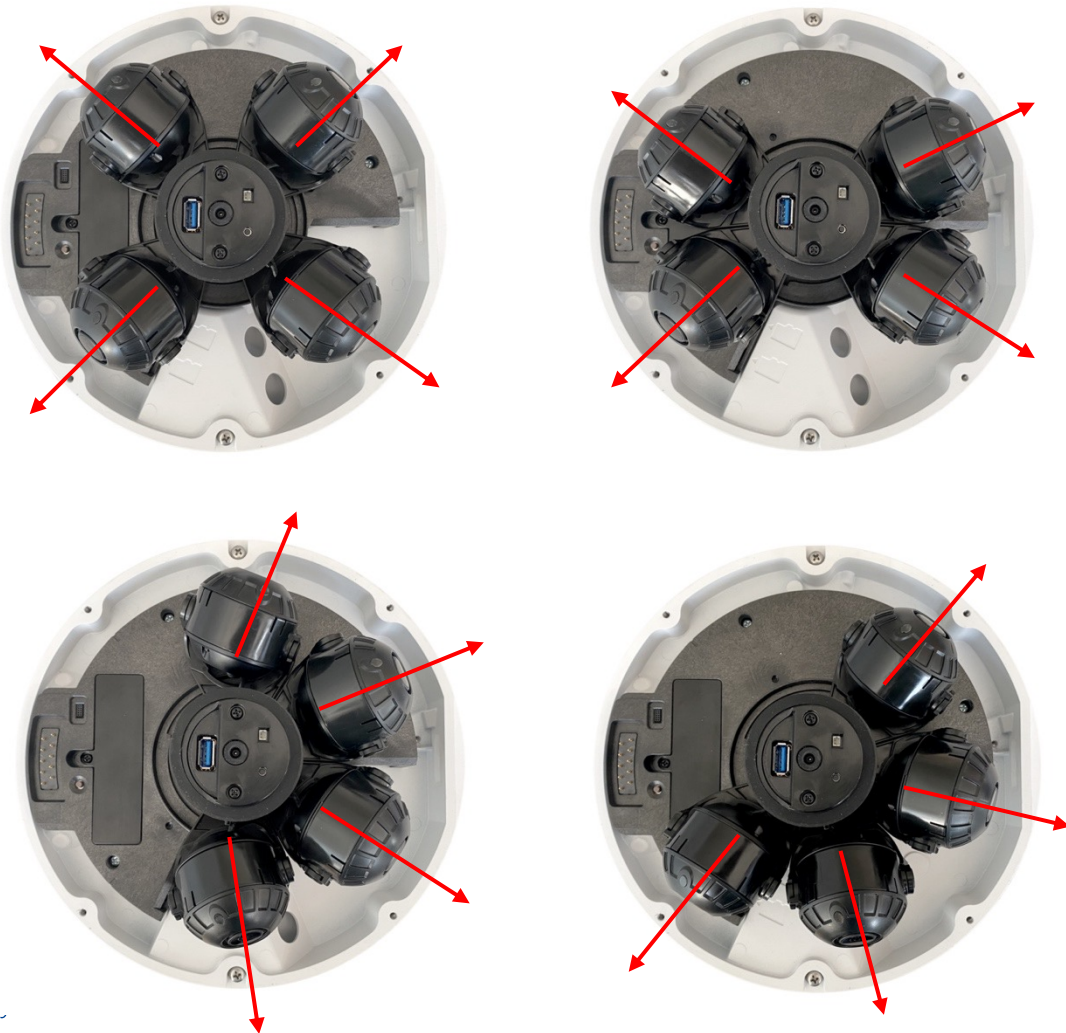


Discreet and compact design.

2. MOBOTIX MOVE Vandal Multisensor Camera Mx-VM1A-20-IR-VA

The four sensor modules can be arranged next to each other as required and thus optimally aligned to the detection area.

Each sensor module can be tilted by up to 90 degrees. In addition, you can rotate it 20 degrees to the left and right respectively.



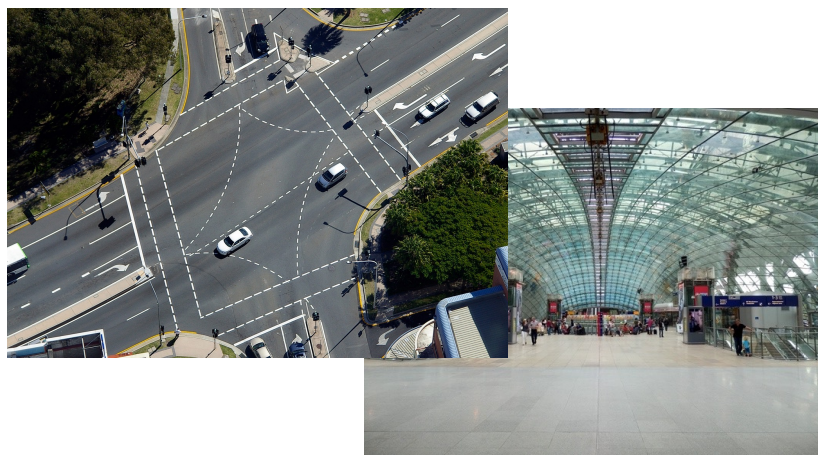
2. MOBOTIX MOVE Vandal Multisensor Camera Mx-VM1A-20-IR-VA

Four eyes see more. Detailed like a motor PTZ camera, but without motor and with 360° coverage! In compact and robust design (IK10, IP66).

With its individually adjustable sensor modules, the multisensor camera provides four independent plus a combined video stream with up to 360° coverage. Each individual image sensor has a resolution of up to 5MP and an individually adjustable angle of view of **53.7°-111.5° (horizontal)** and **40.2°-79° (vertical)**.

Typical applications:

- Industrial plants
- Parking and waiting areas (indoor or outdoor)
- Public areas and buildings, prisons
- City/traffic control
- Casinos, hotel lobbies
- Sales and storage areas
- Airports, train stations, ports
- Sports facilities



Large areas can now be conveniently monitored with the highest level of detail. And all this with a single camera installation and only one connection line!

High performance processor
Ambarella CV52:

- IR illumination (up to 30 m)
- ONVIF Profile S/G/T/M
- FIPS140-2 compliance
- NEMA 4 compliance
- SSD recording (M.2)
- EverClear Dome

Integrated Deep Neural Network Analytics (one application per sensor module)

- Counting, Intrusion, Distant Objects, Face Detection, Left Behind Objects, Stopping Vehicle, Wrong Direction, Loitering, ALPR

Smart Event Functions

- External Input / Motion Detection
- Network Failure Detection/ Tampering Alarm
- Periodical Event/ Manual Trigger/ Audio Detection (integrated microphone)

2. MOBOTIX MOVE Vandal Multisensor Camera Mx-VM1A-20-IR-VA

What makes this MOBOTIX MOVE Multisensor Camera so unique?

SSD storage (in addition to the SD card slot)

With PCIe M.2 interface support, up to **8TB of edge storage** is possible. And extremely cost-effective by using M.2 SSDs compatible with notebook PCs.

Innovative and compact design

With a diameter of only 25.4 cm and a height of 10.5 cm, the camera offers high performance in a small space. A multisensor camera with four connected 5MP cameras also replaces a conventional PTZ camera without its disadvantages: Motor control with mechanical wear, lack of overall 360° view of the scenery, significantly larger design due to the motor.

Superior image performance

The combination solution of four sensor modules enables up to 20 MP (4x5MP) resolution, provides exceptional clarity and captures every detail. The advanced ISP pipeline effectively suppresses image noise while maintaining image sharpness - for remarkable image quality with extremely economical power consumption compared to four individual cameras. The intelligent design with the four sensor modules with varifocal lens (F1.6, 2.8-8 mm, horizontal angle of view from 53.7 to 111.5 degrees) that can be freely positioned on the base carrier allows manual pan, tilt and rotate movements and thus offers the very highest flexibility for fine adjustment of the camera.

Easy installation and maintenance

Since only one network cable is required for installation, the camera saves time and costs compared to installations with multiple cameras. The integrated USB interface allows direct connection to the camera via a USB dongle, making it easy to adjust and configure the autofocus lenses on site. The modular structure with the space-saving and individually installed image sensors allows for easy maintenance. Due to the lack of servo motors as with conventional PTZ cameras, the multisensor system naturally requires less maintenance overall.

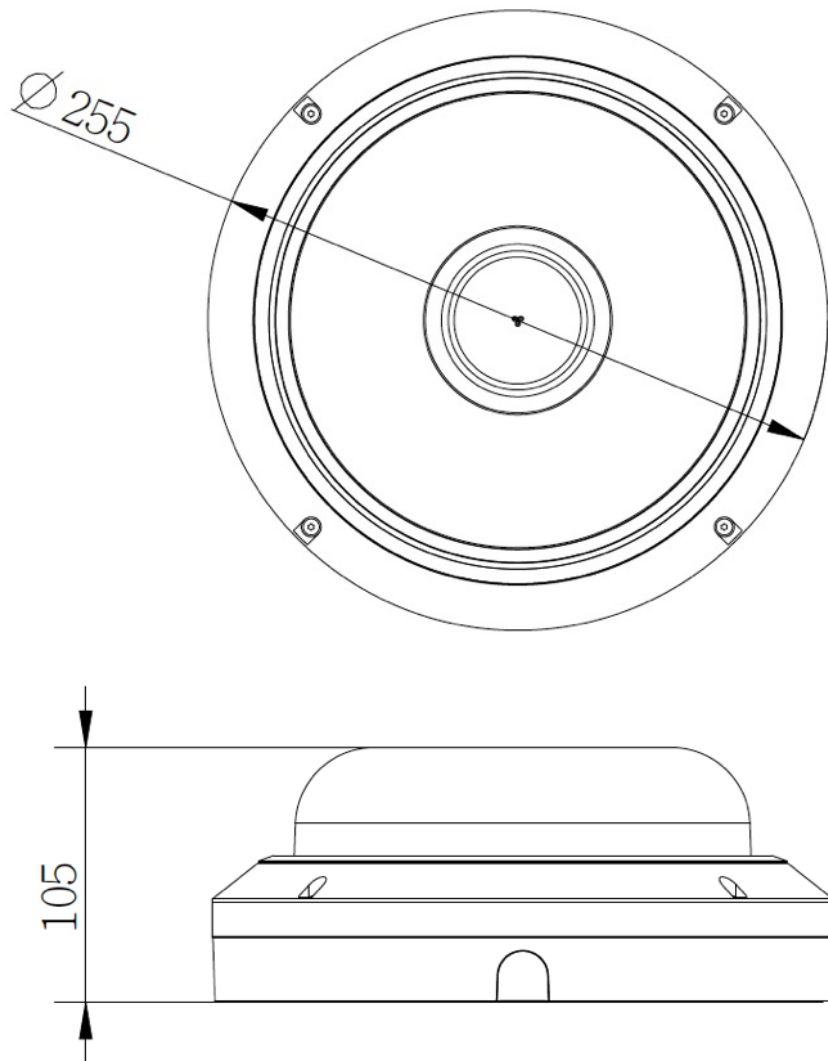


2. MOBOTIX MOVE Vandal Multisensor Camera Mx-VM1A-20-IR-VA



Technology that sets standards:

- Up to 8 individual video streams plus a single combined 4-sensor stream (20MP, 360° possible)
- 4 individual, manually alignable sensor modules with vario lens (F1.6 2.8-8 mm)
- Multi codec support (H.265/H.264/MJPEG)
- True day/night function and integrated IR illumination, WDR
- 3D Motion Compensated Noise Reduction (MCTF)
- M.2 SATA3 SSD support for high-performance in-camera recording
- Additional support for Micro SD/SDHC/SDXC cards
- **10 integrated video analysis functions with Deep Neural Network accelerated engine, similar to the new MOBOTIX MOVE PTZ cameras (for details see next section 3) or 4K MOVE VA cameras**
- ONVIF profile S/G/T/M support
- [EverClear coating](#)
- FIPS140-2 compliance (level 3) by using a certified "Trusted Platform Module" TPM
- Weatherproof (IP66) and vandal-proof (IK10)
- NEMA 4x compliant
- Camera weight: 2.4 kg (5.3 lb)



2. MOBOTIX MOVE Vandal Multisensor Camera Mx-VM1A-20-IR-VA



The matching accessories for the MOVE Multisensor Camera:

- The Multisensor camera is compatible with all accessory mounts of the MOBOTIX MOVE SpeedDome camera series ([see Online Catalog](#)). Only the new **Mx-M-VM-AP adapter mounting plate** is required.
- Alternatively, the camera can be mounted using the **Mx-M-VM-IC in-ceiling** installation kit.
- Power supply: **PoE++ IEEE802.3bt**, for example via the PoE++ injector 60W **Mx-NPA-PoE1A-60W-BT**, which is available as an accessory (additionally requires a standard C14 cold device plug for operation, not included in delivery).
- Replacement domes with EverClear coating available in clear (already included) and, for particularly bright environments, also in tinted version (**Mx-A-VM-DBC** and **Mx-A-VM-DBT**). The groundbreaking MOBOTIX [EverClear](#) coating uses a special nanotechnology that transforms water drops into an ultra-thin film of water immediately upon impact. This ensures the best image quality in the rain. In addition, the self-cleaning MOBOTIX EverClear coating increases the stability and scratch resistance of the dome, which reduces maintenance and thus operating costs.
- In addition to the [MOBOTIX HUB](#) VMS system, [MxManagementCenter](#) or [MOBOTIX CLOUD](#), MOBOTIX also offers a [MOVE NVR](#) (Network Video Recorder), a particularly practical and easy-to-use plug & play solution for smaller, local installations. All connected cameras are optimally supported in their functionality by the integrated, cost- and license-free MOBOTIX MOVE NVR video management software.



2. MOBOTIX MOVE Vandal Multisensor Camera Mx-VM1A-20-IR-VA

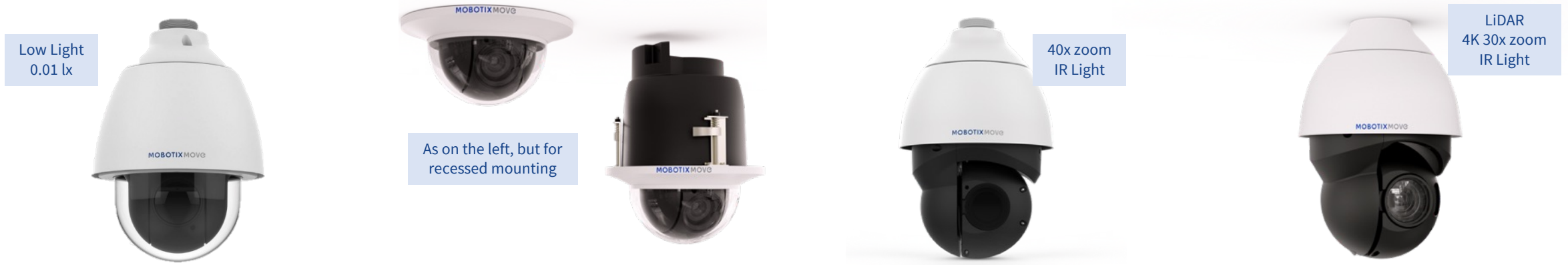
Ordering information camera

Model name Order number	Description
MOBOTIX MOVE Vandal Multisensor VM-20-IR-VA Mx-VM1A-20-IR-VA	MOBOTIX MOVE Vandalism Multisensor Network Camera Mx-VM1A-20-IR-VA - Image sensor: 4x5MP (2608x1964) - 1/2.7" Progressive CMOS IMX 675 SONY STARVIS II - Up to 3x optical zoom - ONVIF S/G/T/M - 10 built-in video analysis functions incl. DNN face and license plate recognition - Automatic object tracking - Multisensor camera with built-in IR LED illumination (up to 30 m) for day and night use - Automatic switching from color to B/W image (mechanical IR cut filter) - FIPS140-2 Level 3 compliant with TPM chipset - NEMA-4x compliant - M.2 SATA 3 SSD support - 2D & 3D Motion Compensated Noise Reduction - 4 camera modules with motorized varifocal lens (F1.6: 2.8mm to 8 mm - Viewing angle HxV: 53,7° -111,5° x 40,2°-79° - Autofocus and P-Iris with automatic adjustment to changing light situations - IK10 / IP66 - Ambient temperature -40 to 60 °C (-40° to 140 °F), humidity 10 to 90% - Video codecs: H.264, H.265, MJPEG (up to 9 video streams simultaneously - 4x3 per camera module + 1 Quadview stream) - Wide Dynamic Range (130 dB) - Max. Frame rate: 5MP@30 fps (H.264, with and without activated WDR), MJPEG: 1080p@30 fps - Power supply: PoE++ IEEE802.3bt , max. 51 W AC 24V max. 53.10 W / 74.80 VA - Opt. integrated microphone & speaker (bidirectional communication) - Hardened and "self-cleaning" anti-reflective front glass coating of the camera by MOBOTIX EverClear - MTBF: 95,000h
Adapter mounting plate Mx-M-VM-AP	Adapter Mounting Plate suitable for the MOBOTIX MOVE Vandal Multisensor Camera Mx-VM1A-20-IR-VA
In-Ceiling installation set Mx-M-VM-IC	In-Ceiling Installation Set suitable for the MOBOTIX MOVE Vandal Multisensor Camera Mx-VM1A-20-IR-VA
Replacement dome clear Mx-A-VM-DBC	Standard Replacement Dome - Suitable for MOBOTIX MOVE Vandal Multisensor Camera Mx-VM1A-20-IR-VA
Replacement dome tinted Mx-A-VM-DBT	Tinted replacement dome for particularly bright environments - Suitable for MOBOTIX MOVE Vandal Multisensor Camera Mx-VM1A-20-IR-VA
PoE++ Power Injector 60W Mx-NPA-PoE1A-60W-BT	PoE++ 60W Network Power Injector - AC input voltage: 100 to 240 VAC (50 to 60Hz) - AC input current: 1.5A @100-240 VAC - Operating ambient temperature: -10° to 40°C @60W, -10° to 50°C, humidity 10 to 90% @30W - IEEE 802.3bt standard - Output power of 60W over 4 pairs - Supports 10/100/1000Base-T applications - Plug-and-play installation - Full protection OVP, OCP - Standard IEC plug C14 not included in delivery

3.

MOBOTIX MOVE PTZ SPEED DOME CAMERAS

3. MOBOTIX MOVE PTZ SpeedDome Cameras



Mx-SD2A-230-LL-VA

PRODUCT PROFILE:

- Image sensor SONY STARVIS II, 2MP 1/2.8" Progressive CMOS IMX662
- Resolution 1965 x 1113 Pixel
- **Ambarella CV25 Processor**
- **Low Light** / P-IRIS / Auto-IRIS / WDR
- Light sensitivity: 0.01 Lx color, 0.001 lx b/w
- 30x optical zoom
- Motorized zoom lens (F1.6-F4.7: 4.3 to 129 mm)
- Horizontal FOV: 59.3° (wide), 1.9° (tele)
- Vertical FOV: 34.9° (wide), 1.4° (tele)
- **10 analytics functions incl. DNN face and car license plate recognition**
- **MxMessage communication system**

Mx-SD2A-230-LL-FM-VA

PRODUCT PROFILE:

- **Flush Mount**
- Image sensor SONY STARVIS II, 2MP 1/2.8" Progressive CMOS IMX662
- Resolution 1965 x 1113 Pixel
- **Ambarella CV25 Processor**
- **Low Light** / P-IRIS / Auto-IRIS / WDR
- Light sensitivity: 0.01 Lx color, 0.001 lx b/w
- 30x optical zoom
- Motorized zoom lens (F1.6-F4.7: 4.3 to 129 mm)
- Horizontal FOV: 59.3° (wide), 1.9° (tele)
- Vertical FOV: 34.9° (wide), 1.4° (tele)
- **10 analytics functions incl. DNN face and car license plate recognition**
- **MxMessage communication system**

Mx-SD1A-540-IR-VA

PRODUCT PROFILE:

- Image sensor SONY STARVIS II, 5MP 1/2.8" Progressive CMOS IMX675
- Resolution 2608 x 1964 Pixel
- **Ambarella CV25 Processor**
- P-IRIS / Auto-IRIS / WDR
- Light sensitivity: 0.02Lx color
- **40x optical zoom**
- Motorized zoom lens (F1.6-F4.95: 4.3 to 170 mm)
- Horizontal FOV: 62.6° (wide), 1.9° (tele)
- Vertical FOV: 48.8° (wide), 1.4° (tele)
- **Infrared illumination up to 300 m**
- **10 analytics functions incl. DNN face and car license plate recognition**
- **MxMessage communication system**

Mx-SD1A-831-LIR-VA

PRODUCT PROFILE:

- **LiDAR autofocus system**
- Image sensor SONY STARVIS II, 8MP 1/1.8" Progressive CMOS IMX678
- **Resolution 3856 x 2180 pixels (4k)**
- **Ambarella CV25 Processor**
- P-IRIS / Auto-IRIS / WDR
- Light sensitivity: 0.08 Lx color
- 31x optical zoom
- Motorized zoom lens (F1.35-F4.6: 6.9 to 214.6 mm)
- Horizontal FOV: 61.8° (wide), 2.2° (tele)
- Vertical FOV: 35.9° (wide), 1.3° (tele)
- **Infrared illumination up to 300 m**
- **10 analytics functions incl. DNN face and car license plate recognition**
- **MxMessage communication system**

3. MOBOTIX MOVE PTZ SpeedDome Cameras



More than just High-Quality PTZ Cameras:

Expanded scope through integrated analytics and AI

The new MOBOTIX MOVE PTZ cameras are not only impressive due to their technical specifications or their high-quality and durable workmanship. They make daily work equally easy with their clever functions. With the auto-tracking function, captured persons and objects are reliably tracked.

DNN Edge Video Analysis

The latest computer vision technology with DNN engine is the basis for accelerated and thus highly efficient video processing directly in the camera. This engine enables highly accurate real-time object tracking and human face recognition. It also enables the simultaneous detection of multiple objects.

Advanced LiDAR autofocus

The top-of-the-line **Mx-SD1A-831-LIR-VA** features LiDAR technology for blazing fast autofocus. Advanced AF technology helps the camera focus faster, achieve higher accuracy, and take focus performance to a new level.

All PTZ cameras feature the proven [EverClear technology](#) and the MxMessage system.

**Except for AI-based functions such as facial recognition and license plate recognition.*

Onboard Analytics:

Up to two analytics functions can be operated simultaneously: *

- Objects left behind
- Intrusion
- Sabotage
- Wrong direction
- Loitering
- Object counting
- Object removal
- Stopping vehicle

AI-based functions

- Face recognition (incl. gender and age estimation)
- License plate recognition (50 countries)

3. MOBOTIX MOVE PTZ SpeedDome Cameras



Video Analysis #1

Detects objects left behind



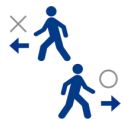
Video Analysis #2

Detects intruders in protected zones



Video Analysis #3

Detects sabotage of the camera



Video Analysis #4

Detects objects moving against the defined direction



Video Analysis #5

Detects people who are permanently in a sensitive area.

BeyondHumanVision



LiDAR Autofocus

Ultra-fast and accurate focusing of the image sensor (Mx-SD1A-831-LIR-VA only)

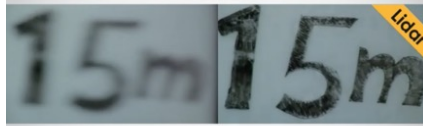


Object tracking

Tracks detected people and moving objects

MOBOTIX MOVE

Distance 15m



Lidar : Significantly faster



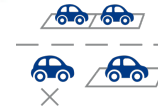
Video Analysis #6

Counts objects and people in a defined area.



Video Analysis #7

Detects when objects have been removed from an area.



Video Analysis #8

Detects the stopping of a vehicle in a defined protection zone.



Video Analysis #9

Recognizes persons incl. gender and age estimation.



Video Analysis #10

Recognizes the license plates of vehicles from up to 50 countries

MOBOTIX

3. MOBOTIX MOVE PTZ SpeedDome Cameras

Ordering information	
Model name Order number	Description
2MP Speed Dome Low Light Video Analytics Camera Mx-SD2A-230-LL-VA	MOBOTIX MOVE SpeedDome Network Camera SD-230-LL-VA - Weatherproof, motorized ONVIF S/G/T/M dome PTZ camera - 10 integrated video analytic functions incl. DNN face and car license plate recognition, linkable to PTZ position preselection - Up to 30x optical zoom - Image sensor: 2MP SONY STARVIS II IMX662 (1936 x 1100), 1/2.8" Progressive CMOS - Automatic switching from color to B/W image (mechanical IR cut filter) - Motorized zoom lens (F1.6-F4.7: 4.3 to 129 mm, angle of view HxV: 59.3°-2.3° x 34.9°-1.4°) with autofocus and P-Iris with automatic adaptation to changing light situations - Automatic object tracking, DNN-based (people, vehicles) - 2D & 3D motion compensated noise reduction (MCTF) - IP66, IK10 - Ambient temperature -40 to 55 °C, humidity 10 to 90 % - Video codecs: H.264, H.265, MJPEG (up to 3 streams simultaneously) - Wide Dynamic Range (130 dB) - Max. Frame rate: 2MP@30 fps (H.264, with and without activated WDR function); MJPEG: 1080p@30 fps - Power supply: PoE+ IEEE802.3at , max 25.5 W, AC24V, max 29.04 W / 53.24 VA - Hardened and "self-cleaning" anti-reflective dome coating with MOBOTIX EverClear - MTBF: 50,000h - Warranty: 5 years.
2MP Speed Dome Low-Light Flush Mount Video Analytics Camera Mx-SD2A-230-LL-FM-VA	MOBOTIX MOVE SpeedDome Network Camera SD-230-LL-FM-VA - Weatherproof, motorized ONVIF S/G/T/M indoor dome PTZ camera for ceiling installation - 10 integrated video analytic functions incl. DNN face and car license plate recognition, linkable with PTZ position preselection - Up to 30x optical zoom - Image sensor: 2MP SONY STARVIS II IMX662 (1936 x 1100), 1/2.8" Progressive CMOS - Automatic switching from color to B&W image (mechanical IR cut filter) - Motorized zoom lens (F1.6-F4.7: 4.3 to 129 mm, angle of view HxV: 59.3°-2.3° x 34.9°-1.4°) with autofocus and P-Iris with automatic adaptation to changing light situations - Automatic object tracking, DNN-based (people, vehicles) - 2D & 3D motion compensated noise reduction (MCTF) - Ambient temperature -40 to 55 °C, humidity 10 to 90 % - Video codecs: H.264, H.265, MJPEG (up to 3 streams simultaneously) - Wide Dynamic Range (130 dB) - Max. Frame rate: 2MP@30 fps (H.264, with and without activated WDR function); MJPEG: 1080p@30 fps - Power supply: PoE+ IEEE802.3at , max 17.71 W, AC24V, max 17.10 W / 32.67 VA - Hardened and "self-cleaning" anti-reflective dome coating with MOBOTIX EverClear - MTBF: 50,000h - Warranty: 5 years.

3. MOBOTIX MOVE PTZ SpeedDome Cameras

Ordering information	
Model name Order number	Description
5MP Speed Dome IR Light Video Analytics Camera Mx-SD1A-540-IR-VA	MOBOTIX MOVE SpeedDome Network Camera SD-540-IR-VA - Weatherproof, motorized ONVIF S/G/T/M dome PTZ camera - 10 integrated video analytic functions incl. DNN face and car numbers - Up to 40x optical zoom - Image sensor: 5MP SONY STARVIS II IMX675 (2608 x 1964), 1/2.8" progressive CMOS - Automatic switching from color to B/W image (mechanical IR cut filter) - Motorized zoom lens (F1.6-F4.95: 4.3 to 170 mm, angle of view HxV: 62.6°-1.9° x 48.8°-1.4°) with autofocus and P-Iris with automatic adaptation to changing light situations - Automatic object tracking, DNN-based (people, vehicles) - 2D & 3D motion compensated noise reduction (MCTF) - IR LEDs (working distance up to 300m) - IP66 - Ambient temperature -40 to 55 °C, humidity 10 to 90 % - Video codecs: H.265, H.264, MJPEG (up to 3 streams simultaneously) - Wide Dynamic Range (130dB) - Max. Frame rate: 5MP @ 30 fps (H.265, H.264, with and without activated WDR function); MJPEG: 1080p @ 30 fps - Power supply: PoE++ IEEE802.3bt , max. 51 W, AC24V max. 59.05 W / 87.12 VA - Hardened and "self-cleaning" anti-reflective camera front glass coating with MOBOTIX EverClear - MTBF: 50,000h
4K Speed Dome IR Light Video Analytics Camera Mx-SD1A-831-LIR-VA	MOBOTIX MOVE SpeedDome Network Camera SD-831-LIR-VA - Weatherproof, motorized ONVIF S/G/T/M dome PTZ camera - 10 integrated video analytic functions incl. DNN face and car license plate recognition, linkable to PTZ position preselection - Up to 31x optical zoom - Precise LiDAR focusing system - Image sensor: 8MP SONY STARVIS II IMX678 (3856 x 2180) 4K, 1/1.8" Progressive CMOS - Automatic switching from color to B/W image (mechanical IR cut filter) - Motorized zoom lens (F1.35-F4.6: 6.9 to 214.6 mm, angle of view HxV: 61.8°- 2.2° x 35.9° - 1.3°) with autofocus and P-Iris with automatic adaptation to changing light situations - Automatic object tracking, DNN-based (people, vehicles) - IR LEDs (working distance up to 300 m) - 2D & 3D motion compensated noise reduction (MCTF) - IP66 - Ambient temperature -40 to 55 °C, humidity 10 to 90 % - Video codecs: H.265, H.264, MJPEG (up to 4 streams simultaneously) - Wide Dynamic Range (130 dB) - Max. Frame rate: 8MP@30 fps (H.265, H.264, with and without activated WDR function); MJPEG: 1080p@30 fps - Power supply: PoE++ IEEE802.3bt , max. 51 W, AC24V max. 53.10 W / 74.80 VA - Hardened and "self-cleaning" anti-reflective camera front glass coating with MOBOTIX EverClear - MTBF: 50,000h
PoE++ Power Injector 60W Mx-NPA-PoE1A-60W-BT	PoE++ 60W Network Power Injector - AC input voltage: 100 to 240 VAC (50 to 60Hz) - AC input current: 1.5A @100-240 VAC - Operating ambient temperature: -10° to 40°C @60W, -10° to 50°C, humidity 10 to 90% @30W - IEEE 802.3bt standard - Output power of 60W over 4 pairs - Supports 10/100/1000Base-T applications - Plug-and-play installation - Full protection OVP, OCP - Standard IEC plug C14 not included in delivery

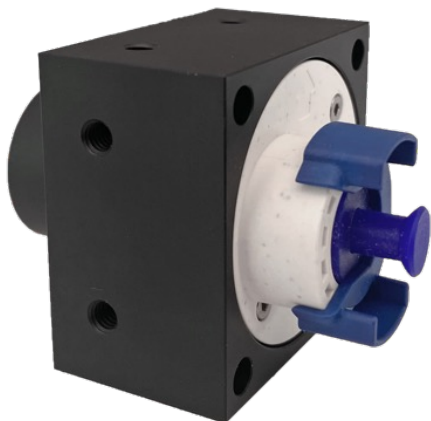
4.

MOBOTIX 7 BLOCKFLEXMOUNTS FOR S74

4. MOBOTIX 7 BlockFlexMounts for S74



4K UHD & 12MP Hemispheric
IP30, 0-50 °C (32-122 °F)



Minimally visible. Maximum flexibility.

The successful BlockFlexMounts are now also available for S74 systems!

BlockFlexMounts are MOBOTIX 7 optical sensor modules with minimal dimensions and prefabricated holes, enclosed in sleek aluminum blocks. For quick and easy mounting of individual integration solutions.

For integration into plants:

In existing installations, every millimeter is precious. That is why MOBOTIX BlockFlexMounts have small dimensions and numerous prefabricated holes for individual and stable mounting. This greatly simplifies the integration of S74 camera systems. Less space-saving standard lens holders (mounts) can be dispensed with.

For discreet mounting:

Video surveillance should not always be clearly visible. For mounting behind walls and ceilings as well as in objects, the BlockFlexMounts are perfect, as they are hardly visible when installed appropriately.

THE MOST IMPORTANT:

Available variants:

- 12MP IR Cut Day & Night Sensor Module, incl. Hemispheric Fisheye Lens 360° B016
- 4K IR-Cut day & night sensor module, incl. fixed lens with a model-dependent horizontal angle of view from 120° (super wide angle) to 8° (super telephoto): 120° B040, 90° B050, 60° B080, 45° B100, 30° B150, 15° B280 or 8° B500.
- **The S74 does not require a special firmware version to operate the BlockFlexMount modules!**



4. MOBOTIX 7 BlockFlexMounts for S74

Ordering information	
Model name Order number	Description
P7-BlockFlexMount Mx-O-M7SA-B-12DN016	Suitable for: S74 - 12MP Hemispheric sensor module with IR cut filter for day and night use, max resolution: 4K UHD 2880x2880. - Operating conditions: IP30, 0 to 50 °C - Integrated status LEDs - Camera connection via MOBOTIX sensor cable (can be ordered separately).
P7-BlockFlexMount Mx-O-M7SA-B-8DN040	Suitable for: S74 - Sensor module with premium lens and IR cut filter for day and night use, aperture: f/1.8, max. angle of view (HxV): 120°x60°, max. resolution: 4K UHD (3840x2160) - Operating conditions: IP30, 0 to 50 °C - Integrated status LEDs. - Camera connection via MOBOTIX sensor cable (can be ordered separately)
P7-BlockFlexMount Mx-O-M7SA-B-8DN050	Suitable for: S74 - Sensor module with premium lens and IR cut filter for day and night use, aperture: f/1.8, max. angle of view (HxV): 95°x50°, max. resolution: 4K UHD (3840x2160) - Operating conditions: IP30, 0 to 50 °C - Integrated status LEDs. - Camera connection via MOBOTIX sensor cable (can be ordered separately)
P7-BlockFlexMount Mx-O-M7SA-B-8DN080	Suitable for: S74 - Sensor module with premium lens and IR cut filter for day and night use, aperture: f/1.8, max. angle of view (HxV): 60°x33°, max. resolution: 4K UHD (3840x2160) - Operating conditions: IP30, 0 to 50 °C - Integrated status LEDs. - Camera connection via MOBOTIX sensor cable (can be ordered separately)

Please note:

The light sensor known from the MOBOTIX standard sensor modules for automatic day/night switching depending on the ambient brightness is available but can only be used as long as this sensor is not covered, e.g. by installation. Switching between day and night mode with color or black and white image is then only possible manually in the firmware or time-controlled.

4. MOBOTIX 7 BlockFlexMounts for S74

Ordering information	
Model name Order number	Description
P7-BlockFlexMount Mx-O-M7SA-B-8DN100	Suitable for: S74 - Sensor module with premium lens and IR cut filter for day and night use, aperture: f/1.8, max. angle of view (HxV): 45°x25°, max. resolution: 4K UHD (3840x2160) - Operating conditions: IP30, 0 to 50 °C - Integrated status LEDs. - Camera connection via MOBOTIX sensor cable (can be ordered separately)
P7-BlockFlexMount Mx-O-M7SA-B-8DN150	Suitable for: S74 - Sensor module with premium lens and IR cut filter for day and night use, aperture: f/1.8, max. angle of view (HxV): 30°x17°, max. resolution: 4K UHD (3840x2160) - Operating conditions: IP30, 0 to 50 °C - Integrated status LEDs. - Camera connection via MOBOTIX sensor cable (can be ordered separately)
P7-BlockFlexMount Mx-O-M7SA-B-8DN280	Suitable for: S74 - Sensor module with premium lens and IR cut filter for day and night use, aperture: f/1.8, max. angle of view (HxV): 15°x8.5°, max. resolution: 4K UHD (3840x2160) - Operating conditions: IP30, 0 to 50 °C - Integrated status LEDs - Camera connection via MOBOTIX sensor cable (can be ordered separately)
P7-BlockFlexMount Mx-O-M7SA-B-8DN500	Suitable for: S74 - Sensor module with premium lens and IR cut filter for day and night use, aperture: f/1.8, max. angle of view (HxV): 8°x4.5°, max. resolution: 4K UHD (3840x2160) - Operating conditions: IP30, 0 to 50 °C - Integrated status LEDs. - Camera connection via MOBOTIX sensor cable (can be ordered separately)

Please note:

The light guide sensor known from the MOBOTIX standard sensor modules for automatic day/night switching depending on the ambient brightness is available but can only be used as long as this sensor is not covered, e.g. by installation. Switching between day and night mode with color or black and white image is then only possible manually in the firmware or time-controlled.

5.

VMS Updates (MOBOTIX HUB, LIVE App, CLOUD)

5. MOBOTIX HUB Release 2023 R2



Please note:

MOBOTIX delivers new MOBOTIX HUB releases with additional features up to three times a year. Based on our licensing model, each new release requires the purchase of new software licenses. This does not apply to customers with Advanced Service licenses, who can obtain the updates free of charge.

For pure bug fixes, improvements or important adjustments, we provide software patches to all HUB customers free of charge from time to time (last version: <https://www.mobotix.com/en/node/18795>). For each specific version of MOBOTIX HUB there are corresponding patches (for exact details please refer to the release notes on our [website](#)). The installation of the patches is recommended by MOBOTIX, as they fix any bugs and contain a variety of improvements.

The next **MOBOTIX HUB software update (Release 2023 R2)** will be available from MOBOTIX on August 31, 2023. On the next page you will get a quick overview of the most important news of this version.

In addition to the [release notes](#), please also use the information and documents on our MOBOTIX HUB product page: hub.mobotix.com

Customized HUB trainings with a technical or sales focus can be booked directly via our training calendar:

<https://www.mobotix.com/en/support/trainings/trainingcalendar>

5. MOBOTIX HUB Release 2023 R2 - New Features and Improvements

Mobile Client:

- Share a link to a live camera feed in the mobile client > Improved collaboration efficiency
- Easier to find and share a live camera feed without knowing the exact camera name or view name

Desk Client:

- Adaptive view in Smart Client Player > Improved display of video exports
- Improved display of video exports > Focus on cameras with recorded video at the right time and place
- Easier use of exports in MOBOTIX HUB format if they are required as evidence

Video restrictions (live and playback):

- Restrict access to sensitive videos and give only trusted people the right to view them.
- This way you reduce the risk of leaks and protect the privacy of the people you record.

Adaptive playback and lower bandwidth consumption:

- Adaptive playback in the Desk Client switches between a high- and low-resolution stream, reducing data load. You reduce the load on the corporate network and simplify the connection of remote sites to a central security hub.
- Lower costs when adding additional cameras: Save power for additional cameras by running motion detection on low-resolution streams.

Management Server failover improvements:

- Improved support and security for large installations
- Lower total cost of ownership

Product	MOBOTIX HUB	MOBOTIX HUB	MOBOTIX HUB	MOBOTIX HUB	MOBOTIX HUB
	L1	L2	L3	L4	L5
Desk Client - Updated timeline	√	√	√	√	√
Desk Client - UX renewal of export tab	√	√	√	√	√
Desk Client - Adaptive Playback	-	√	√	√	√
Desk Client Player - Adaptive View for export	√	√	√	√	√
Web Client - UX Renewal of Timeline	√	√	√	√	√
Web Client - UX Renewal of Bookmarks	-	-	√	√	√
Mobile Client - Share a link to a live camera feed	-	-	√	√	√
Device Packs	√	√	√	√	√
Log Server use of Server Configurator and certificates	√	√	√	√	√
Video restrictions	-	-	-	-	√

Release notes and download of the MOBOTIX HUB software products:

<https://www.mobotix.com/en/software-downloads>

The release notes contain a detailed list of all improvements and changes. Version 2023 R2 will be available online from August 31, 2023.

5. MOBOTIX LIVE App 2.6.5

The MOBOTIX LIVE App iOS version 2.6.5 for iPhone and iPad is available for free in the [App Store](#) since August 11, 2023. The faulty Playback Overlay display of the previous version is now fully functional again.

An Android version is available in the [Google Play Store](#).

What do I need this app for?:

The MOBOTIX LIVE APP allows you to quickly and easily access your MOBOTIX cameras and MOBOTIX door stations with your smartphone or tablet. Never miss a visitor again thanks to push notification. MOBOTIX LIVE shows the ring message of a MOBOTIX IP video door station as well as live and playback views of MOBOTIX IoT cameras. Browse the latest events at the door station/camera in the Playback view. View different live streams from cameras in the grid views, use the automatic camera search, live view, camera connection via SSL and display of the connection status.

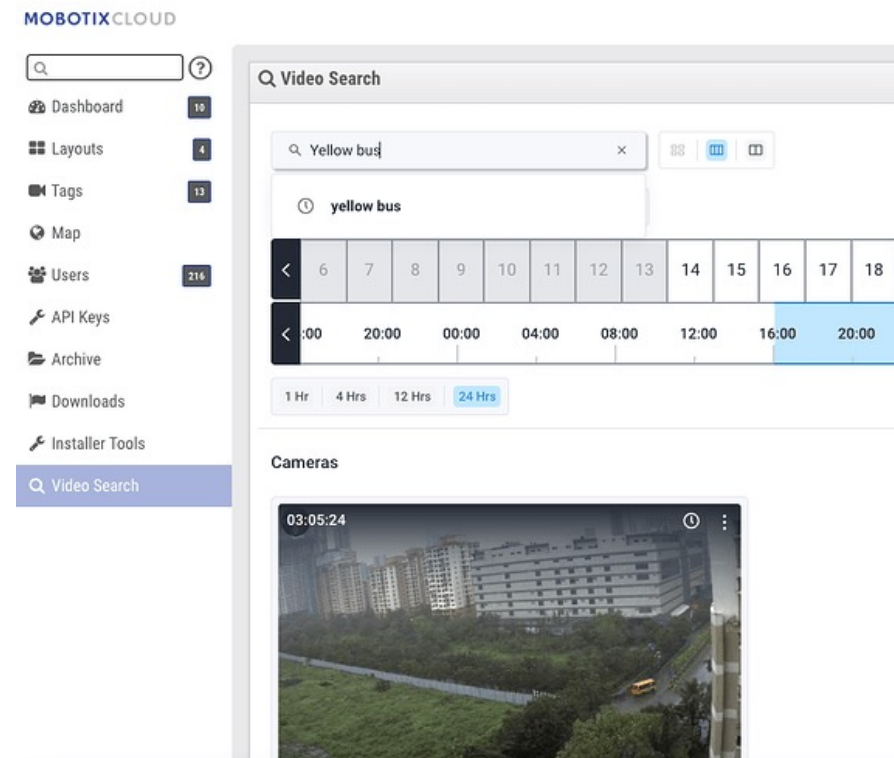


5. MOBOTIX CLOUD App 8.3.3

The MOBOTIX CLOUD App 8.3.3 (iOS and Android), which will be available in the App and Google Play Stores from September 2023, now also features the AI-based **Video Search** function already known from the CLOUD desktop version, in addition to some general improvements. This allows you to search the recordings stored in your CLOUD according to individual criteria, such as:

- Person
- Man
- Woman
- Vehicle
- Backpack
- Any color
- Yellow bus
- Person with red shirt
- Green car
- ...

In doing so, we have deployed an enhanced AI model across all of our data centers that improves the accuracy of search results for users.



Please also see our CLOUD Video Search **application video** on YouTube:

https://www.youtube.com/watch?v=pPngfTK0_9k&t=13s

6.

**PRODUCTS END OF LIFE (EOL)
AS OF DECEMBER 1, 2023**

6. EoL of Mx6 Series Functional Boxes

The **end of production** of the products listed here is due to components that are no longer available. The products will then only be available until December 2023 or while stocks last.

Please order now if you still need these products for upcoming projects!



Illustrations show examples only.

Product discontinuations as of December 1, 2023 (EoL)

Model name Order number	Description
MX-BPA box MX-OPT-BPA1-EXT	Power supply for several MxBus modules of one MxBus line - 2x2 connection terminals for MxBus - 2 connection terminals for external voltage source from 12 to 48 V DC - Max. Output power: 9 W - IP66/IK08, -30 to 60 °C
MX input box MX-OPT-Input1-EXT	Weatherproof connection of external sensors - Connection to camera via MxBus - 6 self-powered inputs for connection of up to 6 external sensors - Protection class IP66/IK08, -30 to 60 °C
MX output box MX-OPT-Output1-EXT	Weatherproof connection of external devices and power relays - Connection to the camera via MxBus - 6 self-powered outputs (12 V, 10 mA each) - 2 floating outputs - Protection class IP66/IK07, -30 to 60 °C
MX proximity box MX-PROX-BOX	Weatherproof proximity sensor for MOBOTIX systems - Precise detection of approaching objects based on radar microwave technology - Detection range (horizontal x vertical): 80° x 34° - Protection class IP66/IK07, -20 to 60 °C
MxDigitizer for S1x MX-OPT-DIGI-INT	Interface box for direct connection of an analog camera to the S1x Body as an alternative image source (instead of a sensor module) - Connection of up to two MxDigitizers or analog cameras to one S1x Body possible - Operating conditions: Indoor, 0 to 40 °C

6. EoL of Certified Apps for MOBOTIX 7 Cameras

The camera apps from **Visage Technologies** and **FFGroup** will no longer be distributed by MOBOTIX as of **December 1, 2023**. The face detection and recognition functions will continue to be available with the MOBOTIX MOVE Video Analytics cameras. High-performance license plate and vehicle recognition solutions will be offered with the Vaxtor and MOBOTIX SYNC apps as a customized dashboard.



Please order now if you still need these discontinued products for upcoming projects!

MOBOTIX offers firmware support for the discontinued apps for another 12 months (until 12/2024).

Product discontinuations as of December 1, 2023 (EoL)

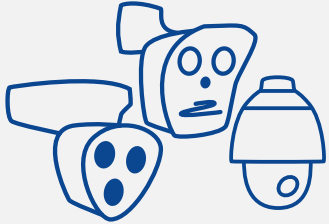
Model name Order number	Description
Mx-APP-VIS-FR-1 Mx-APP-VIS-FR-2 Mx-APP-VIS-FR-5	Recognition of faces based on stored image data. 1-year license Recognition of faces based on stored image data. 2-year license Recognition of faces based on stored image data. 5-year license
Mx-APP-FF-LPR-EUCA Mx-APP-FF-LPR-AM Mx-APP-FF-LPR-ME	FF Group License Plate Recognition App EUCA Region FF Group License Plate Recognition App Americas Region FF Group License Plate Recognition App Middle East Region
Mx-APP-FF-MMCR-EUCA	FF Group App License Plate, Brand, Model and Color Recognition Region EUCA

7.

IMPORTANT LINKS AND DOWNLOADS

7. Important Links and Downloads

Products



[Overview of the entire MOBOTIX product range...](#)

Software



[Download software, firmware, apps and driver packages...](#)

Documentation



[Technical documentation, whitepapers, technical drawings and more...](#)

Trainings



[Current dates about webinars, trainings and events...](#)

Where to buy MOBOTIX



[MOBOTIX network solutions are sold through qualified distributors, dealers and partners around the world, also to professional installers and service providers for video surveillance, security applications, home automation and commercial applications.](#)

BeyondHuman**Vision**

MOBOTIX

MOBOTIX AG
Kaiserstrasse
67722 Langmeil
Germany

+49 6302 9816-0
info@mobotix.com
www.mobotix.com

MOBOTIX, the MOBOTIX Logo, MxControlCenter, MxEasy, MxPEG, MxDisplay and MxActivitySensor are trademarks of MOBOTIX AG registered in the European Union, the U.S.A. and in other countries • Subject to change without notice • MOBOTIX do not assume any liability for technical or editorial errors or omissions contained herein • All rights reserved • © MOBOTIX AG