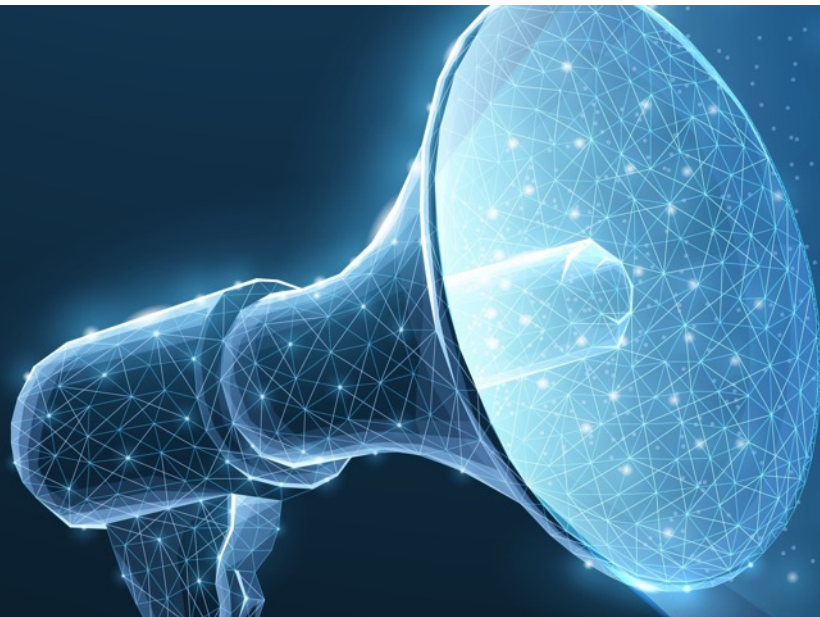


MOBOTIX NEWS - March 2024

New Products and Updates



- IO-Box and NPAA-Box for MOBOTIX 7 Cameras
- Firmware & Certified Apps Update (MOVE & P7)
- MOBOTIX HUB updates incl. NurseAssist Dashboard
- MOBOTIX ManagementCenter 2.8.1 Service Release
- MOBOTIX CLOUD Updates
- MOBOTIX eCampus Updates
- Product Discontinuation (End of Life)

Table of contents

1. Overview of Software Updates
2. IO-Box and NPAA-Box for MOBOTIX 7 cameras
3. Firmware and Certified Apps Update (MOVE & P7)
4. MOBOTIX HUB updates incl. NurseAssist Dashboard
5. MOBOTIX ManagementCenter 2.8.1 Service Release
6. MOBOTIX CLOUD Updates
7. MOBOTIX eCampus Updates
8. Product Discontinuation (End of Life)
9. Important Links and current MOBOTIX Campus Trainings

Notes:

This document is intended exclusively for MOBOTIX partners for information and requirements planning purposes and may not be published in this form (digitally or as a printout) - Delivery only to commercial customers - Prices plus VAT ex works Langmeil, Germany - Subject to change without notice - MOBOTIX accepts no liability for technical errors, misprints or omissions - © MOBOTIX AG 2024 - MOBOTIX is a registered trademark of MOBOTIX AG in the European Union, the USA and other countries - All rights reserved.

MOBOTIX MSRP prices are recommended net prices ex works (EXW), ex works in Germany. In some countries, MOBOTIX dealers must set higher local sales prices due to import regulations/customs duties.

Important: The MOBOTIX c71 NurseAssist solution is now also available for the USA, Canada and Latin America!

1.

Overview of Software Updates

Current Software Updates: Overview

Updates 2024

2024:

- March 28: [MOBOTIX HUB Plug-Ins 2024-03-28](#)
- March 28: [MOBOTIX HUB Driver 2024-03-28](#)
- March 28: [MX-System Release 7.3.4.23](#); [MOBOTIX Certified Apps Release 2024-02-22](#)
- March 15: [MOBOTIX HUB Security & Bugfix Patches 2024-03-15](#)
- March 15: [MxMOVE NVR release mb20240301NVR64](#); [MxMOVE NVR release mb20240301NVR816](#)
- March 15: [MxMOVE Release mb20240126SX](#); [MxMOVE Release mb20240130UX](#); [MxMOVE Release mb20240229BX](#); [MxMOVE Release mb20240229UX_8G_ALPR](#); [MxMOVE Release mb20240305YX](#); [MxMOVE Release mb20240314TU](#)
- February 28: [MxManagementCenter Release 2.8.1](#)
- February 13: [MX-System Release 7.3.4.12-r3](#)
- January 26: [MOBOTIX HUB Plug-Ins 2024-01-26](#); [MOBOTIX HUB Security & Bugfix Patches 2024-01-26](#)
- January 26: [MOBOTIX HUB Plug-Ins 2024-01-26 for Milestone XProtect](#)
- January 16: [MOBOTIX Certified Apps Release 2024-01-04](#)
- January 12: [MOBOTIX 7 MX-System Release 7.3.4.12](#)
- January 12: [MOBOTIX HUB 2023 R3](#)

Note: The very first [MOBOTIX mobile app](#) will no longer be updated and will only be available until it is removed by Apple.

Note on MOBOTIX software updates

Electronic systems also need to be updated from time to time to ensure that they function optimally. You should not hesitate to do so. Here are four good reasons why you should always consider updating your software:

- 1. Closing security gaps:** Security is the most important reason for updating software immediately.
- 2. New functions:** New functions can be added by installing updates. Technology is constantly changing and updates offer the latest features and improvements.
- 3. Improving performance:** Not all software updates are security-related, but contribute to improving the performance of the software.
- 4. Ensure compatibility:** Without updates, older video systems may not be able to work with newer video management systems, for example.

Click here to go to the software download area on the MOBOTIX website:

<https://www.mobotix.com/en/software-downloads>

2.

IO-Box and NPAA-Box for MOBOTIX 7 Cameras

2. IO-Box and NPAA-Box for MOBOTIX 7 Cameras

Interface boxes for MOBOTIX 7 cameras (S74, M73, Q71, D71, p71, v71, c71)

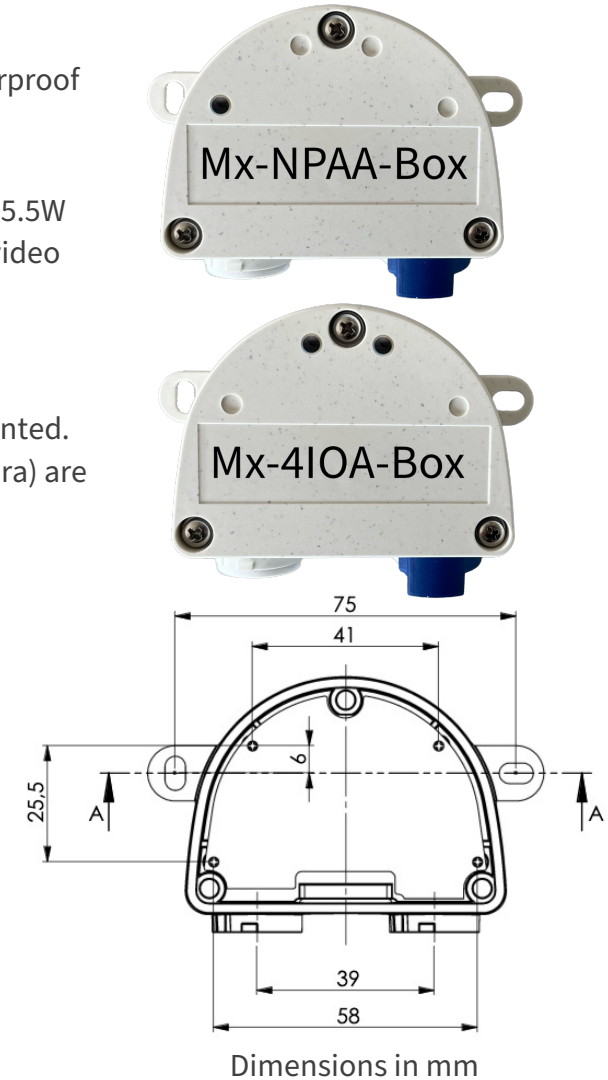
Since the cameras of the MOBOTIX 7 platform no longer have the MxBUS connection of the previous series, MOBOTIX now offers weatherproof interface boxes specially developed for MOBOTIX 7 cameras in the familiar, extremely compact housing design:

- **Mx-NPAA-Box:** Weatherproof PoE+ injector for network connection of MOBOTIX IoT cameras with simultaneous power supply up to 25.5W from external power supply units or rechargeable batteries with 12 to 24 V DC (from 35W). Ideally suited for battery-powered mobile video systems.
- **Mx-4IO-Box:** Weatherproof input/output box with USB-C connection and four inputs and four outputs. This allows the decentralized MOBOTIX 7 video systems to be easily integrated into an existing device infrastructure and individual special solutions to be implemented. Third-party devices connected to the box (e.g. triggering a fire extinguishing system after early fire detection by an M73 thermal camera) are controlled automatically via the camera or manually, e.g. via softbuttons in the camera software or from MxManagementCenter. The camera can also be used as a gateway for networked device communication via MQTT and MxMessageSystem.



Typical applications for intelligent MOBOTIX 7 video solutions in the industrial sector:

- Automation of production
- Production monitoring
- Quality assurance
- Preventive maintenance
- Automated documentation
- Improving fire protection



2. NPAA Box for MOBOTIX IoT Cameras - Ordering Information

With the weatherproof NPAA box, a **MOBOTIX IoT camera from the MOBOTIX 7 (x74/73/71) or Mx6 (x16/26) series** can be connected to the network cable (installation cable) and supplied with **up to 25.5W** of power via an additional external power supply unit or battery (12-24V DC, min. 35W) (not available from MOBOTIX). Please note that a MOBOTIX Ethernet patch cable (with standard sealing ring) must be used to connect the box to the camera in order to maintain the tightness of the device housing.

Order information Camera		MSRP price*
Model name Order number	Description	
POE+ Power Adapter for MOBOTIX IoT cameras Mx-F-NPAA	Weatherproof PoE+ power supply with up to 25.5W and network connector - Requires power supply via power supply units and batteries from 12 to 24 V DC (min. 35W) - Protection class IP66/IK08, -30 to 50 °C - Important note: Only MOBOTIX patch cables may be used to connect to the MOBOTIX cameras of the Mx6 and MOBOTIX 7 platform series	Price on request
Ethernet patch cable 1m MX-OPT-CBL-LAN-1	Ethernet patch cable for MOBOTIX systems - length 1 m/3.3 ft - 2x RJ 45 plugs with special MOBOTIX sealing ring	Price on request
Ethernet patch cable 2m MX-OPT-CBL-LAN-2	Ethernet patch cable for MOBOTIX systems - length 2 m/6.6 ft - 2x RJ 45 plugs with special MOBOTIX sealing ring	Price on request
Ethernet patch cable 5m MX-OPT-CBL-LAN-5	Ethernet patch cable for MOBOTIX systems - length 5 m/16.4 ft - 2x RJ 45 plugs with special MOBOTIX sealing ring	Price on request
Ethernet patch cable 10m MX-OPT-CBL-LAN-10	Ethernet patch cable for MOBOTIX systems - length 10 m/32.8 ft - 2x RJ 45 plugs with special MOBOTIX sealing ring	Price on request

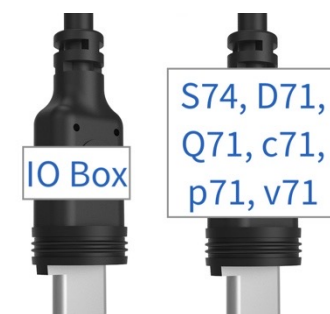


*MOBOTIX MSRP prices are recommended net sales prices Ex Works (EXW), ex works in Germany. In some countries, MOBOTIX distributors may have to apply higher local sales prices due to import regulations/customs duties.

2. IO-Box for MOBOTIX 7 Cameras - Ordering Information

The weatherproof input/output box adds four inputs and four outputs to each MOBOTIX 7 camera. External devices or loads with the following specifications can be switched via the switching outputs: **AC/DC up to 50V or 60W or 2A**. Please note that a USB-C/MiniUSB cable must be used to connect the box to the **M73**, but a MOBOTIX sensor cable must be used for the **other MOBOTIX 7** cameras, which is also used to connect sensor modules for the S74.

Order information Camera		MSRP price*
Model name Order number	Description	
Input/Output Box MOBOTIX 7 Mx-F-4IOA	Weatherproof connection of external sensors and switching of external devices via MOBOTIX cameras - Connection to the camera via USB-C - 4 galvanically isolated inputs, 4 relay outputs - Protection class IP66/IK08, -30 to 60 °C - Connection of external devices/switches/relays with cables of specification AWG26-AWG20 (0.14-0.5 mm) ²	Price on request
USB-C/MiniUSB cable, 1m Mx-CBL-MUC-MU-1	USB-C straight > MiniUSB straight - Length 1 m/3.3 ft - For connecting the IO box (Mx-F-4IOA) to the M73 camera and for connecting the RS232 IO box (MX-OPT-RS1-EXT) to the S74	Price on request
USB-C/MiniUSB cable, 5m Mx-CBL-MUC-MU-5	USB-C straight > MiniUSB straight - Length 5 m/16.4 ft - For connecting the IO box (Mx-F-4IOA) to the M73 camera and for connecting the RS232 IO box (MX-OPT-RS1-EXT) to the S74	Price on request
Sensor cable, 1m Mx-A-S7A-CBL01	Sensor cable straight-straight, length 1 m/3.3 ft - For connecting the IO box to the S74, D71, Q71, c71, p71, v71 camera and for connecting sensor modules to the S74	Price on request
Sensor cable, 2m Mx-A-S7A-CBL02	Sensor cable straight-straight, length 2 m/6.6 ft - For connecting the IO box to the S74, D71, Q71, c71, p71, v71 camera and for connecting sensor modules to the S74	Price on request
Sensor cable, 3m Mx-A-S7A-CBL03	Sensor cable straight-straight, length 3 m/9.9 ft - For connecting the IO box to the S74, D71, Q71, c71, p71, v71 camera and for connecting sensor modules to the S74	Price on request



*MOBOTIX MSRP prices are recommended net sales prices Ex Works (EXW), ex works in Germany. In some countries, MOBOTIX distributors have to set higher local sales prices due to import regulations/customs duties.

3.

Firmware and Certified Apps Updates (MOVE & P7)

3. MOBOTIX MOVE Firmware Updates

New Software Versions for MOVE Products

MOBOTIX offers **8** current software versions for the **MOVE product portfolio**. The updates, which are available immediately, include a 'Direct to Cloud' (ready) extension for additional models (updates #4/6/7) as well as bug fixes and numerous stability and function improvements. The software is available for free download on the MOBOTIX website with detailed descriptions and release notes.

MOBOTIX MOVE Cameras and MOVE NVR- Release Notes & Software Download:

1. [MxMOVE NVR Release mb20240301NVR64](#)
2. [MxMOVE NVR Release mb20240301NVR816](#)
3. [MxMOVE Release mb20240126SX](#) 'Direct to Cloud' usable
4. [MxMOVE Release mb20240130UX](#) 'Direct to Cloud' usable
5. [MxMOVE Release mb20240229BX](#)
6. [MxMOVE Release mb20240229UX_8G_ALPR](#) ('Direct to Cloud' ready)
7. [MxMOVE Release mb20240305YX](#) ('Direct to Cloud' ready)
8. [MxMOVE Release mb20240314TU](#)



3. MX-System Release 7.3.4.23 and MX Certified Apps Release 2024-03-22



Firmware for all MOBOTIX 7 camera models: M73, S74, Q71, D71, c71, v71, p71

The latest, free firmware version contains bug fixes and improvements and is **mandatory for the use of the new Mx-4IO box**. The most important new feature in the Certified Apps release is a **performance update** of the NurseAssist app for the c71 (faster start of the app and faster AI-based recognition of people).

Important links:

- Firmware: https://www.mobotix.com/en/software-downloads?tid_filter=2286
- Certified Apps: https://www.mobotix.com/en/software-downloads?tid_filter=2287
- c71 NurseAssist: <https://www.mobotix.com/en/mobotix-c71-nurseassist>

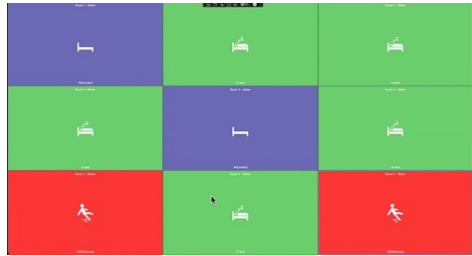


3. MOBOTIX c71 NurseAssist now also for USA, Canada and Latin America!



Relieve nursing staff, protect patients

Falls from bed that are recognized too late represent a major risk in the care sector. In 6 out of 7 falls with conventional systems with a manual alarm button, someone is usually only on site after five minutes. The MOBOTIX c71 NurseAssist solution acts as a **smart sensor** with integrated analysis algorithms to automatically detect falls or people leaving the bed while simultaneously alerting the caregiver. The system detects incidents using live images without storing, displaying or sending them to a server (data protection-compliant solution).



The NurseAssist Dashboard, which can also be used via the MOBOTIX HUB plug-in, offers additional, graphically illustrative alarm and report functions. In the care facility, the current status of the residents in **all** rooms equipped with c71 NurseAssist sensors is displayed in color. This gives the responsible staff a quick overview and facilitates organization. This enables "silent checks" without physically entering the rooms - for an undisturbed night's sleep and maximum privacy.

Order information		
Model name Order number	Description	MSRP price*
c71 Indoor camera 4k, DN016 (day/night) NurseAssist Mx-c71A-NurseAssist	MOBOTIX c71 NurseAssist powered by Kepler Vision Technologies with the following functions: - Monitoring the well-being of patients in private rooms, corridors and common areas of healthcare facilities - Minimizing response times through decentralized fall detection - Prevention of accidents caused by the events: person on the floor, person in bed and person out of bed - Simple and discreet installation - GDPR-compliant operation through event-controlled masking of live and recorded images	Price on request

*MOBOTIX MSRP prices are recommended net sales prices Ex Works (EXW), ex works in Germany. In some countries, MOBOTIX distributors have to set higher local sales prices due to import regulations/customs duties.

4.

MOBOTIX HUB Updates incl. NurseAssist Dashboard

4. MOBOTIX HUB Updates



Please note:

MOBOTIX delivers new MOBOTIX HUB releases with additional functions up to three times a year. The current version is [MOBOTIX HUB Release 2023 R3](#), available since January 2024. Based on our licensing model, each new release requires the purchase of new software licenses. **This does not apply to customers with Advanced Service licenses, who can obtain the updates free of charge!**

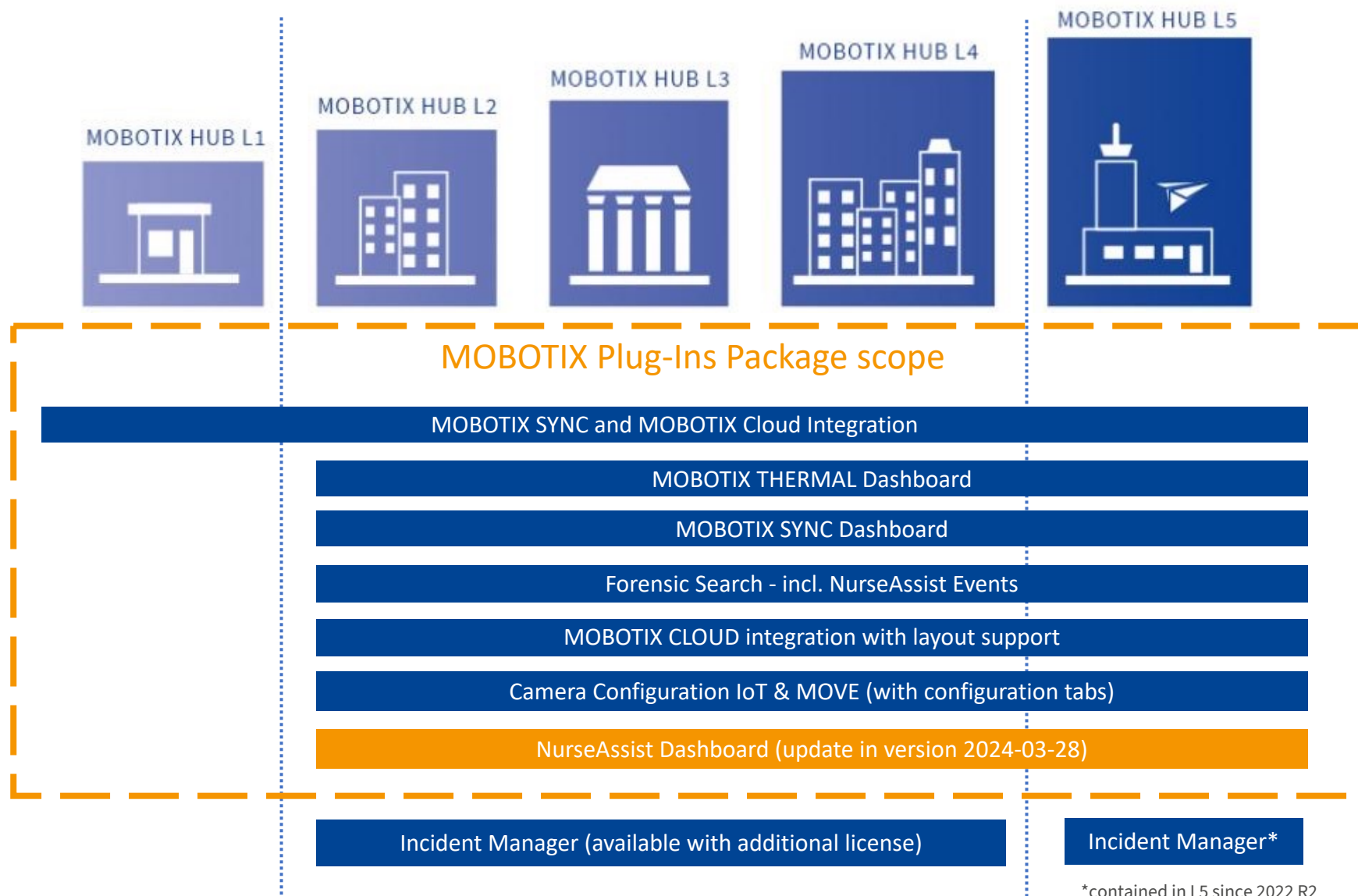
For bug fixes, important adjustments or new additional functions, we provide all HUB customers with new software patches, device drivers and updates of our special plug-ins free of charge from time to time.

Release notes and download of the latest MOBOTIX HUB updates (for HUB Release 2023 R3):

- [MOBOTIX HUB Plug-Ins 2024-03-28](#) (extended NurseAssist Dashboard)
- [MOBOTIX HUB Driver 2024-03-28](#)
- [MOBOTIX HUB Security & Bugfix Patches 2024-03-15](#)

More information on the updates can be found on the following pages.

4. MOBOTIX HUB Plug-Ins: Extended NurseAssist Integration



THE MOST IMPORTANT THING:

- From HUB L2, the MOBOTIX plug-ins can be used for the c71 NurseAssist solution
- The Plug In Package is **always free of charge** for MOBOTIX HUB customers



4. MOBOTIX HUB Plug-Ins: NurseAssist Dashboard



New functions for the MOBOTIX c71 Nurse Assist solution

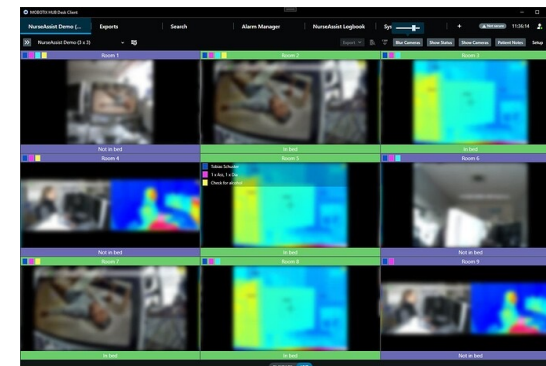
The innovative healthcare application **MOBOTIX c71 NurseAssist** has now become even more user-friendly: When NurseAssist is used together with the **MOBOTIX HUB VMS** and the latest **MOBOTIX HUB plug-ins** (also available free of charge as **Milestone XProtect plug-ins**), **you have access to valuable additional functions:**

Download & Release Notes:

➤ **MOBOTIX HUB Plug-Ins 2024-03-28:** <https://www.mobotix.com/en/node/19414>

Overview of the NurseAssist additional functions included:

- **Forensic Search:**
Support for Kepler NurseAssist events: finding falls and unauthorized bed exits.
- **Status Tableau:**
An uncomplicated, graphically clear alerting and reporting solution; now also with a function for **concealing** the live image (protecting the display monitor from the view of unauthorized persons) and **intercom function** for direct contact with patients from a distance (Push to Talk/Push to Hear, using the microphone and loudspeaker integrated in the c71 NurseAssist sensor).
- **Activity Report:**
Allows a statistical review of incidents involving individual persons or rooms (frequency and duration of events, data export).



Concealed live images and Activity Report

Please also refer to the detailed description of the new functions in the MOBOTIX Community:
<https://community.mobotix.com/t/preview-mobotix-hub-nurse-assist-dashboard-update-eng/8136>



4. MOBOTIX HUB Driver 2024-03-28

MOBOTIX HUB Driver 2024-03-28

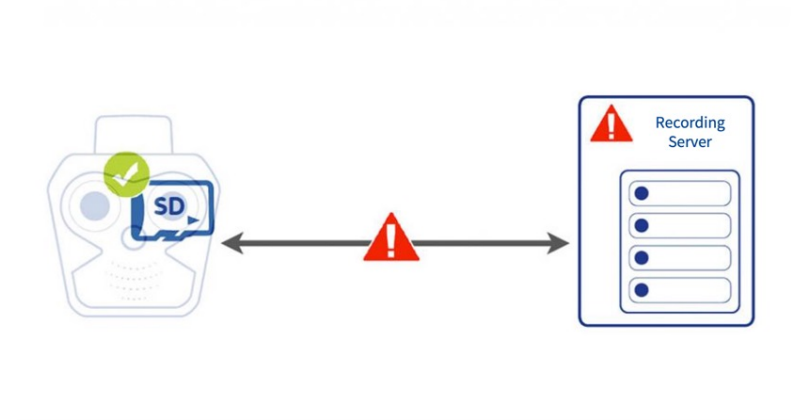
The MOBOTIX HUB Driver software for MOBOTIX cameras (MOVE and IoT), developed in-house by MOBOTIX and offered for the first time, is based on the ONVIF standard and contains additional specific adaptations that are not available in the ONVIF standard. This enabled an even deeper integration of the MOBOTIX cameras into the MOBOTIX HUB VMS - for the best possible use of the unique MOBOTIX DNA!

The most important new feature is the integration of an SD card used in the camera as a storage medium with the following three modes:

1. **SD card as failover medium:** in the event of a recording server failure
2. **SD card as buffer medium:** for time-shifted transmission to reduce the load on the recording server
3. **Direct SD card access:** for use in which the camera only saves the data on the SD card

Further information can be found in the release notes. Please note: The HUB Driver 0.9.995 is a beta version of the soon to be available production version and may only be used for testing and demo purposes of the new functions.

➤ **MOBOTIX HUB MxDriver 2024-03-28:** <https://www.mobotix.com/en/node/19415>



Please also refer to the collected articles on MOBOTIX HUB in the MOBOTIX Community:
<https://community.mobotix.com/c/mobotix-hub/85>



4. MOBOTIX HUB Security & Bugfix Patches 2024-03-15

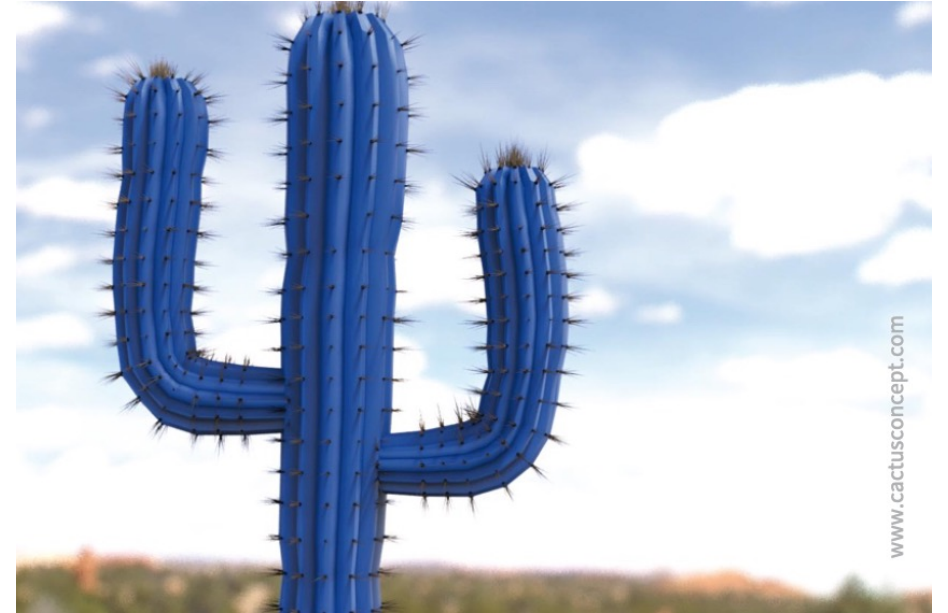
Cumulative patch for HUB version 2023 R3

Cumulative patches contain important adjustments/improvements that were only recognized and implemented after the time of publication of the current MOBOTIX HUB software release.

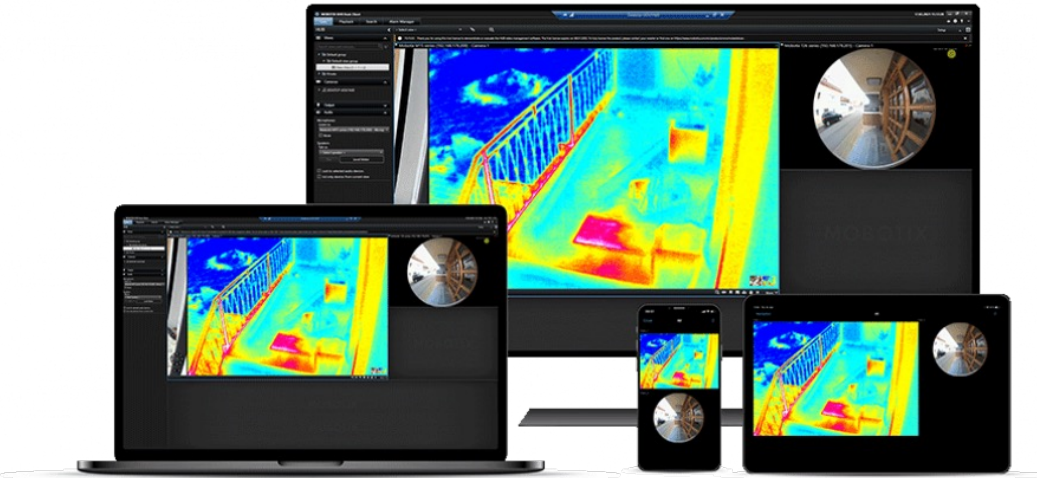
Cumulative patches are available as required after an official release. Before updating, you should discuss with your MOBOTIX HUB partner whether an update is required for the existing installation.

Information on the system requirements regarding software and hardware as well as installation instructions can be found in the release notes.

- **MOBOTIX HUB Security & Bugfix Patches 2024-03-15** (Download & Release Notes):
<https://www.mobotix.com/en/node/19400>



4. Product Discontinuation of older MOBOTIX HUB Releases



Please note the HUB product life cycle:

- The MOBOTIX HUB Release 2020 R2 incl. add-ons has been discontinued as of November 12, 2023.
- The MOBOTIX HUB Release 2021 R1 incl. add-ons will be discontinued on June 29, 2024.
- The MOBOTIX HUB Release 2024 R1 is the latest version with Software Manager and Screen Recorder.
- Please switch to the latest release if required.
- HUB updates are available free of charge for all HUB users with an Advanced Services software maintenance package!

Not a HUB expert yet?

No problem! You can book customized **HUB training courses** with a technical or sales focus directly via our training calendar:

<https://www.mobotix.com/en/support/trainings/trainingcalendar>

5.

MOBOTIX ManagementCenter 2.8.1 Service Release

5. MOBOTIX ManagementCenter 2.8.1 (Service Release)

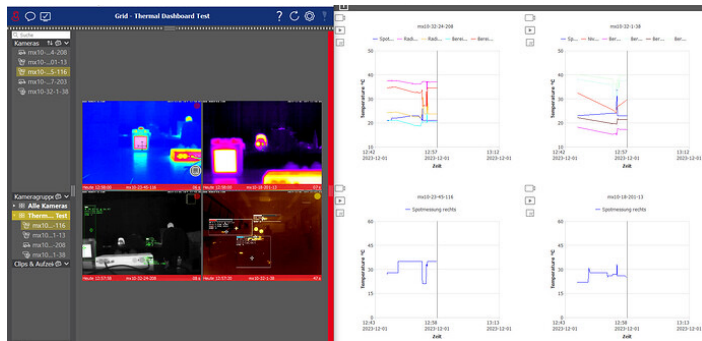


Small update. Big impact.

The latest service release 2.8.1 contains some bug fixes as well as improvements. In this version, the new [MOVE Turret cameras](#) Mx-VT1A-2x-IR and Mx-VT1A-5x-IR can also be integrated into MxMC via ONVIF.

The main improvements in this version:

- Licensing of the Thermal Dashboard functions (Licenses purchased for the use of the Thermal Dashboard function no longer refer to the number of graphs displayed, but to the number of different thermal cameras used. Any number of diagrams and graphs can now be displayed for each licensed camera).
- Deactivation of remote control (The new menu item File '> Pause Remote Control' can be used to deactivate remote control of the program via network messages and any messages that may appear as a result).
- Use of the computer sound system (Sound API)
- Camera configuration - Error messages in the image (The new Error Messages option in the Overlay section of the View > Configuration > Video dialog can be used to (de)activate warning and error messages from the camera in the image).



Release notes and download of the latest MOBOTIX ManagementCenter Release 2.8.1:

➤ **MOBOTIX ManagementCenter 2.8.1:** <https://www.mobotix.com/en/node/19392>

➤ MxMC in the MOBOTIX Community: <https://community.mobotix.com/c/mxmanagementcenter/16>

6.

MOBOTIX CLOUD Updates

6. MOBOTIX CLOUD Updates: App in the Google Play Store

Extended app functions since March 2024

What's new?

- New "Add directly to cloud" functionality
- Improved "Add bridge" functionality
- Improved "Add camera" functionality
- General improvements and bug fixes

➤ **MOBOTIX CLOUD App in the Google PlayStore:**

https://play.google.com/store/apps/details?id=com.een.mobotix.android&hl=en_US



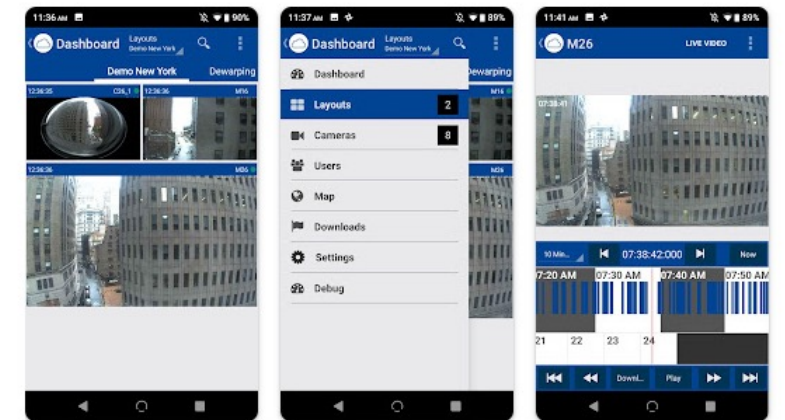
MOBOTIX CLOUD

MOBOTIX AG

1K+ Downloads | USK: All ages

[Install](#) [Share](#) [Add to wishlist](#)

You don't have any devices



Please also note the articles on the MOBOTIX CLOUD in the MOBOTIX Community:

<https://community.mobotix.com/c/cloud/77>



6. MOBOTIX CLOUD Updates: I/O Support also for MOBOTIX IoT Cameras

Support for camera connections in the MOBOTIX CLOUD

(e.g. for opening barriers or integrating alarm systems)

The MOBOTIX CLOUD has I/O functionality. This has been available for numerous MOBOTIX MOVE cameras since the end of 2023 and is now also available for MOBOTIX IoT cameras. Use cases include the combination with alarm systems or external sensors that are connected to the switching input of the camera or interface box and can trigger a recording and/or an alarm (visual alarm, email and push message) in the cloud. The switching output of a MOBOTIX camera can also be used to open a barrier via a softbutton in the MOBOTIX CLOUD VMS. For cameras that support this I/O function, an "I/O TAB" appears in the CLOUD camera settings where the corresponding configuration can be made.

Cameras whose I/O connections are currently supported in the MOBOTIX CLOUD:

- **MOBOTIX IOT:** x71/x73 (MOBOTIX 7 platform) and x16/x26 (Mx6 platform)
- **MOBOTIX MOVE:** SpeedDomes, MicroDomes, Vandal Bullet with Vaxtor ALPR software



Please also note the articles on the MOBOTIX CLOUD in the MOBOTIX Community:

<https://community.mobotix.com/c/cloud/77>



MOBOTIX Community

6. MOBOTIX CLOUD Updates: Direct to Cloud for MOVE

Simple cloud integration of MOBOTIX MOVE cameras even without a hardware bridge

The MOBOTIX CLOUD offers an (additionally usable) direct option for connecting the MOBOTIX MOVE cameras to the cloud more quickly and easily, even without a bridge. Because: In many cloud projects, the cameras are distributed across many locations and the typical number of cameras per location is between 1 and 4 cameras (more cameras possible, depending on the available bandwidth and the risk of data loss due to the missing buffer of the bridge). This is exactly the use case for which Direct to Cloud shows its potential.



New is the support of the Direct to Cloud function for **MOVE cameras with UX software** (Mx-VB1A-8-IR-VA, VD1A-8-IR-VA, Mx-VH1A-12-IR-VA).

Advantages of Direct to Cloud:

- Limiting the hardware on site to the camera(s) (no bridge required)
- Faster and easier installation
- Lower hardware costs (especially with few cameras per location)
- Use of all MOBOTIX CLOUD subscriptions from HD to 15HD (recording 3 days to 5 years)
- Support for Smart Video Search
- Switch to an extended cloud solution with Bridge at any time

Prerequisites:

- A MOBOTIX CLOUD subscription and at least one Direct to Cloud camera (**MOBOTIX MOVE cameras with UX and SX firmware**: Mx-VB1A-8-IR-VA, VD1A-8-IR-VA, Mx-VH1A-12-IR-VA, Mx-VB2(1)A-5-IR-VA, Mx-VB3(2)A-2-IR-VA, Mx-VD2(1)A-5-IR-VA, Mx-VD3(2)A-2-IR-VA, Mx-VB2A-2-IR, Mx-VD2A-2-IR)
- An internet connection on site with sufficient bandwidth
- Use of only a few cameras per location (a bridge can be added at any time if required)

Please also note the articles on the MOBOTIX CLOUD in the MOBOTIX Community:

<https://community.mobotix.com/c/cloud/77>



MOBOTIX Community

7.

MOBOTIX eCampus Updates

7. MOBOTIX eCampus Updates

Online courses (eCampus): <https://mobotix-ecampus.com>

With eCampus, MOBOTIX offers you a complete e-learning platform. This allows you to decide when and where you want to view and edit training content. Simply open the page in your browser and select the training you want.

What's new?

- Improved page layout of eCampus with graphical user guidance
- Page language can be switched at any time (currently: DE and EN)
- Storage and retrieval of your previously acquired training certificates
- Learning Profile: Storage of the training courses you have already completed

➤ Do you already have personal access to our eCampus portal?

Then simply register here: <https://mobotix-ecampus.com>

➤ You don't have access data yet and want to have a look at eCampus first?

With the guest account (user name: **gast**, password: **mobotix**) you can also log in here and get an initial overview: <https://mobotix-ecampus.com>

➤ Would you like to receive personal eCampus access?

Then simply apply here: <https://www.mobotix.com/en/eCampus/request-access>

The screenshot displays the MOBOTIX eCampus website interface. At the top, there is a navigation bar with links for 'My Training', 'Catalog', 'Learning Profile', 'Contact', and 'Gerwin Müller'. Below the navigation bar is a large banner image. The main content area features a grid of course tiles, each with a representative image and a title. The tiles include: 'Product Announcements' (colorful explosion), 'Solutions & Portfolio' (network diagram), 'MOBOTIX 7' (cityscape), 'MOBOTIX 6' (robot head), 'MOBOTIX MOVE' (cameras), 'MOBOTIX Thermal Imaging' (thermal person), 'MOBOTIX Door Station' (door), 'MOBOTIX MxManagementCenter' (software interface), 'MOBOTIX HUB' (laptop with thermal image), and 'Basics' (cable). A 'Learning profile' overlay is visible in the bottom right, showing a progress bar for '11%' and a table of completed learning units.

Category	Learning units
Without category	1/5
For Employees Only	1/23
Solutions & Portfolio	5/21
MOBOTIX MxManagementCenter	0/3
MOBOTIX Door Station	0/9
MOBOTIX 6	2/18
MOBOTIX Thermal Imaging	2/5
Basics	2/2
Product Announcements	0/14
MOBOTIX Camera Apps	0/16
MOBOTIX TOOLS	2/2
MOBOTIX CLOUD	1/4
MOBOTIX HUB	0/2

8.

**Product Discontinuation (EoL):
MOBOTIX MOVE UPoE Injector 60W**

8. Product Discontinuation: MOBOTIX MOVE UPoE Injector 60W

The MOBOTIX UPoE Power Injector **Mx-NPA-UPoE1A-60W** is only available until **the end of June 2024** or while stocks last. Alternatively, MOBOTIX recommends using the newer, technically more powerful (IEEE 802.3bt standard) model **Mx-NPA-PoE1A-60W-BT**.

Product discontinuations as at June 30, 2024 (EoL)		
Model name, order number	Description	Product alternative
UPoE Power Injector 60 Watts Mx-NPA-UPoE1A-60W	UPoE 60W network power injector - AC input voltage: 100 to 240 VAC (50 to 60Hz) - AC current consumption: 1.5A @100-240 VAC - Operating ambient temperature: -10 °C - 45 °C) @60W - -10 °C - 55 °C) @30W - IEEE 802.3at compliant with "2-event" classification - IEEE 802.3af backwards compatible - 60W output power via 4-pair CAT - 10/100/1000Base-T support - Plug-and-play installation	Mx-NPA-PoE1A-60W-BT



Ordering information Product alternative	
Model name Order number	Description
PoE++ Power Network Injector 60 Watts Mx-NPA-PoE1A-60W-BT	PoE++ 60W Network Power Injector - AC input voltage: 100 to 240 VAC (50 to 60Hz) - AC input current: 1.5A @100-240 VAC - Operating ambient temperature: -10° to 40°C @60W, -10 °C to 50 °C, humidity 10 to 90% @30W - IEEE 802.3bt standard - Output power of 60W over 4 pairs - Supports 10/100/1000Base-T applications - Plug-and-play installation - Full protection OVP, OCP - Additional required power cable type C14 not included - Warranty: 1 year



9.

Important links and current MOBOTIX Campus Trainings

Become part of the MOBOTIX community!



MOBOTIX Community



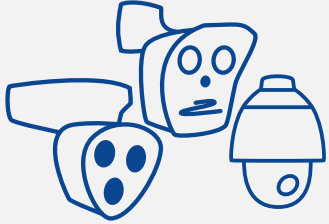
The MOBOTIX Community - support around the clock

Are you a MOBOTIX partner, customer, user or simply technically very interested in our innovative quality products such as the intelligent cameras "Made in Germany", MOBOTIX 7 camera apps with the latest AI technology or the modern VMS solutions such as MOBOTIX HUB or MOBOTIX CLOUD?

Visit our community platform now! Our technical support experts and experienced external users provide tips on setting up and using MOBOTIX solutions - and troubleshooting if necessary. In addition to a wealth of valuable technical information and tips, you can of course also exchange ideas with other members of the global MOBOTIX family in the user forum.

Important Links

Products



[Overview of the entire MOBOTIX product range...](#)

Software



[Download software, firmware, apps and driver packages...](#)

Documentation



[Technical documentation, white papers, technical drawings and more...](#)

Training courses



[Current dates for webinars, training courses and events...](#)

Price list (only available for certified partners)



[Price list in the MOBOTIX Partner Portal, including ETIM and DATANORM catalog](#)

MOBOTIX Campus Trainings: <https://www.mobotix.com/en/support/trainings/trainingcalendar>

April 2024:

Date	Training	Language	Location	Link to registration
2 April	MOBOTIX HUB- Exploración Profunda	ES	Online (Webinar Mexico Time)	https://www.mobotix.com/de/node/18821
4 April	MOBOTIX Solutions from the Sectors Industry, Energy, Healthcare and Retail	EN	Online (Webinar)	https://www.mobotix.com/de/node/19087
4 April	MOBOTIX Lösungen aus den Bereichen Industrie, Energie, Gesundheitswesen und Einzelhandel	DE	Online (Webinar)	https://www.mobotix.com/de/node/19046
9 April	Grundkurs Videosicherheitstechnik	DE	Classroom: Deutschland (MOBOTIX HQ)	https://www.mobotix.com/de/node/18884
11 April	Aufbaukurs 1 Videosicherheitstechnik	DE	Classroom: Deutschland (MOBOTIX HQ)	https://www.mobotix.com/de/node/18885
17 April	MxManagement Center	EN	Online (Webinar – US Chicago Time)	https://www.mobotix.com/de/node/18846
22 April	HUB Sales and Design	EN	Online (Webinar – US Chicago Time)	https://www.mobotix.com/de/node/19334
23 April	Aufbaukurs 2 Videosicherheitstechnik	DE	Classroom: Deutschland (MOBOTIX HQ)	https://www.mobotix.com/de/node/18886
23 April	HUB L1 Technical Specialist	EN	Online (Webinar– US Chicago Time)	https://www.mobotix.com/de/node/19335
23 April	Advanced Configuration & Applications	ES	Classroom: Colombia	https://www.mobotix.com/de/node/19382
24 April	Wärmebildtechnik	DE	Classroom: Deutschland (MOBOTIX HQ)	https://www.mobotix.com/de/node/18887
24 April	Thermal Configuration	ES	Classroom: Colombia	https://www.mobotix.com/de/node/19383
25 April	Datenschutz Video	DE	Classroom: Deutschland (MOBOTIX HQ)	https://www.mobotix.com/de/node/18888
25 April	HUB Sales and Design	EN	Online (Webinar)	https://www.mobotix.com/de/node/19324
25 April	HUB Training Demonstration – Gallagher Integration	ES	Classroom: Colombia	https://www.mobotix.com/de/node/19384
29 April	HUB L1 Technical Specialist	EN	Online (Webinar)	https://www.mobotix.com/de/node/19325

MOBOTIX Campus Trainings: <https://www.mobotix.com/en/support/trainings/trainingcalendar>

May 2024:

Date	Training	Language	Location	Link to registration
2 May	US- MOBOTIX solutions from the industry, energy, healthcare, retail sectors	EN	Online (Webinar)	https://www.mobotix.com/en/node/19102
2 May	DE - MOBOTIX Lösungen aus den Bereichen Industrie, Energie, Gesundheitswesen, Einzelhandel	DE	Online (Webinar)	https://www.mobotix.com/en/node/19047
2 May	EMEA - MOBOTIX solutions from the industry, energy, healthcare, retail sectors	EN	Online (Webinar)	https://www.mobotix.com/en/node/19102
7 May	LATAM - Configuración Avanzada - IP Notify, Meta Eventos y Recepción de Datos	ES	Online (Webinar)	https://www.mobotix.com/en/node/18822
14 May	DE - Grundkurs	DE	Classroom: Deutschland (MOBOTIX HQ)	https://www.mobotix.com/en/node/18889
15 May	ASIA - Basic Configuration & Application	EN	Online Training	https://www.mobotix.com/en/node/19349
15 May	US - Thermal Portfolio	EN	Online (Webinar)	https://www.mobotix.com/en/node/18847
16 May	DE - Aufbaukurs 1	DE	Classroom: Deutschland (MOBOTIX HQ)	https://www.mobotix.com/en/node/18890
16 May	ASIA - Advanced Configuration & Application	EN	Online Training	https://www.mobotix.com/en/node/19352
20/21 May	US - HUB L2 Technical Specialist	EN	Online Training	https://www.mobotix.com/en/node/19333
21 May	LATAM - MOBOTIX 7 AI Analytics	ES	Online (Webinar)	https://www.mobotix.com/en/node/18786
22 May	DE - Aufbaukurs 2	DE	Classroom: Deutschland (MOBOTIX HQ)	https://www.mobotix.com/en/node/18891
23 May	DE - VdS Brandfrüherkennung	DE	Classroom: Deutschland (MOBOTIX HQ)	https://www.mobotix.com/en/node/18892
27/28 May	EMEA - HUB L2 Technical Specialist	EN	Online Training	https://www.mobotix.com/en/node/19326
29 May	ASIA - Termal Hour of Power	EN	Online (Webinar)	https://www.mobotix.com/en/node/19355

Legal aspects of video and audio recording

When using MOBOTIX AG products, all data protection regulations for image and sound surveillance must be observed. Depending on national legislation and the installation location of the cameras, the recording of image and sound data may be subject to documentation requirements or prohibited. All users of MOBOTIX products are therefore required to familiarize themselves with the applicable regulations and to comply with them. MOBOTIX AG is not liable for any unlawful use of its products.

BeyondHumanVision

MOBOTIX

MOBOTIX AG
Kaiserstrasse
67722 Langmeil
Germany

+49 6302 9816-0
info@mobotix.com
www.mobotix.com

MOBOTIX, the MOBOTIX Logo, MxControlCenter, MxEasy, MxPEG, MxDisplay and MxActivitySensor are trademarks of MOBOTIX AG registered in the European Union, the U.S.A. and in other countries • Subject to change without notice • MOBOTIX do not assume any liability for technical or editorial errors or omissions contained herein • All rights reserved • © MOBOTIX AG