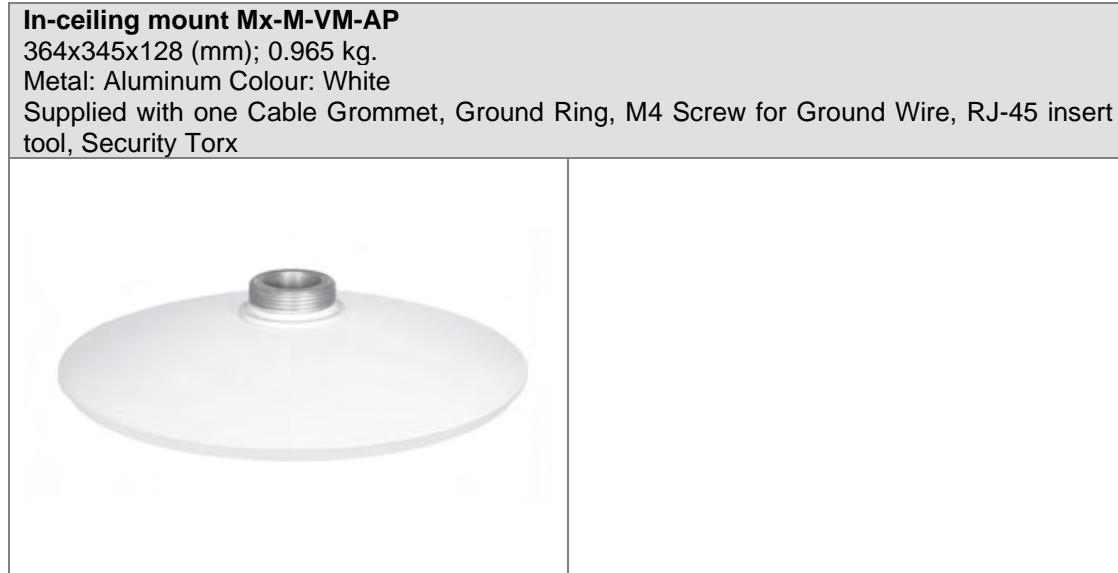


Adapter Mounting Plate Installation

The MOBOTIX MOVE Vandal Multisensor can be mounted on the wall with the accessory: Mx-M-VM-AP.



Tools / Installation Material required:

- Tool for drilling
- Ethernet Cable
- (+) Screwdriver
- Power Cable

Follow the steps below to install the camera with an In-ceiling mount.

STEP 1

Open the mounting plate in the pendant mount. Please refer to the red frame in the figure on the right.

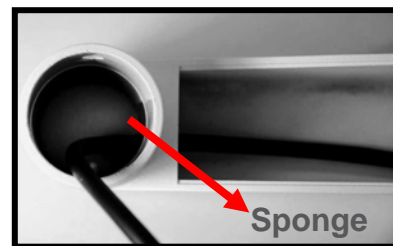
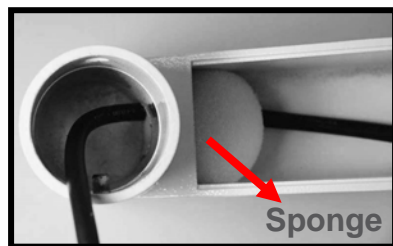


STEP 2

Make a cable entry hole on the wall to recess the cables. Run the Ethernet cable through the pendant mount. If there are other cables, such as power cable, alarm I/O cable or audio I/O cable, also insert them through the pendant mount.



Please block the cable entry hole with the supplied sponge to avoid insects entering the pendant mount. The sponge can be placed in two ways as shown in the illustrations below. **Sponge**



STEP 3

Align the screw holes on the pendant mount with the drilled holes and fix the pendant mount to the wall with four screws.

STEP 4

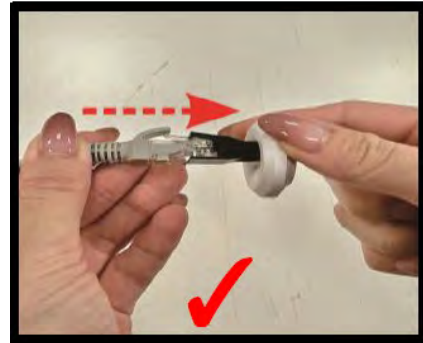
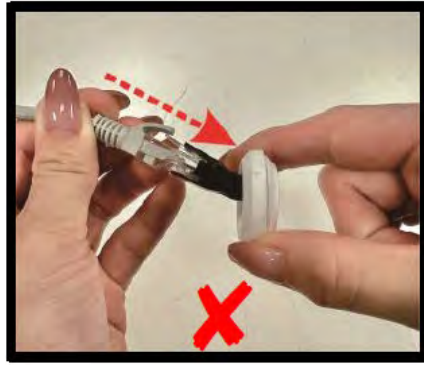
Then thread the Ethernet cable and other cables through the pendant cap and fix the pendant cap to the pendant mount.

STEP 5

Put the insert tool on to the RJ-45 cable, puncture the cable grommet.

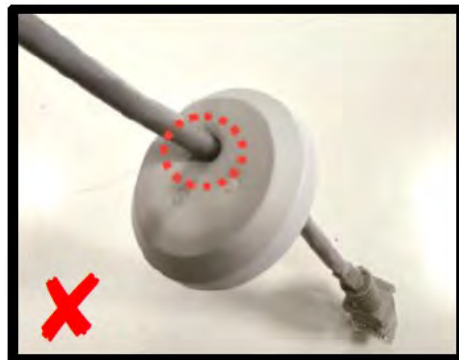


Please thread the Ethernet cable straight through the grommet. Otherwise, it may cause damage to the grommet.



NOTE

After threading the Ethernet cable through the grommet, make sure to push the cable upward, causing the grommet to securely enclose it and create a reliable waterproof



seal.

STEP 6

T Loosen the four security screws on the camera with the supplied security torx and open the dome cover.

STEP 7

Remove the desiccant and use a screwdriver to loosen the connecting screws between the camera and the camera adapter plate.

STEP 8

Attach the anti-drop chain from the camera to the anti-drop ring on the pendant cap.

STEP 9

Connect the Ethernet cable to the RJ45 connector of the camera and insert the cable grommet into the camera's outlet hole. For power, alarm I/O and audio I/O connections, please refer to Users' Manual.

STEP 10

Attach the ground wire to the grounding ring and firmly secure it to the camera using an M4 screw.

STEP 11

Use screws to secure the camera to the Adapter Plate

STEP 12

Slightly pull the cables into the pendant tube. Then screw the mounting plate back to the standard/mini pendant mount.



STEP 13

Adjust the pan / tilt / rotate / twist holders of the camera to point the lens at a suitable position for the desired camera view. Users can see the camera view by accessing the Camera Browser-viewer (refer to the User's Manual for further details).



Note:

- Each lens has adjustable angles as follows: Pan adjustment angle is 180°, Tilt adjustment angle is between 0° ~ 95°, Rotate adjustment angle is between -90° ~ 90° and Twist adjustment angle is between -20° ~ 20°.
- Users can also check the camera view via connecting a BNC monitor.
- If users connect the BNC cable for camera lens adjustment, be sure to disconnect it later, otherwise the dome cover cannot be installed.

STEP 14

Attach the dome cover to the camera, align the arrow mark on the dome cover with the one on the camera housing and fasten the two security screws. And the pendant cap mount installation is completed.