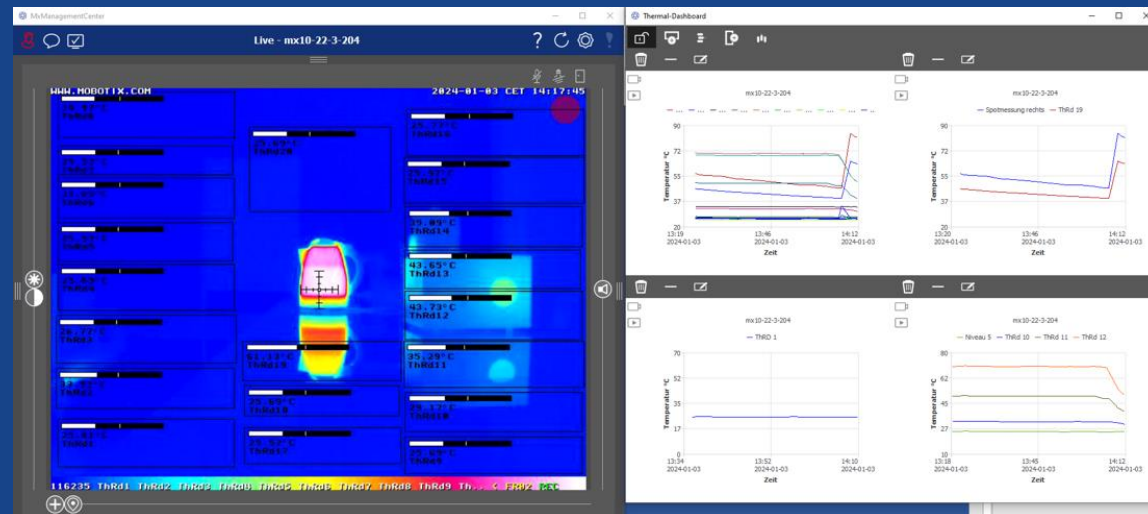


MOBOTIX ManagementCenter with Thermal Dashboard PlugIn



MOBOTIX ManagementCenter with Thermal Dashboard PlugIn



More possibilities with thermal cameras - MxMC with optional Thermal Dashboard is here!

MxManagementCenter (MxMC) is a MOBOTIX application for PC and MAC systems with a focus on simple and intuitive operation combined with maximum flexibility. In addition to individual bug fixes and detail improvements, the currently available ManagementCenter (as of 2.8 release) also includes the option of using the Thermal Dashboard function, which is subject to licensing.

New Thermal Dashboard function (subject to license, 30-day demo license available free of charge)

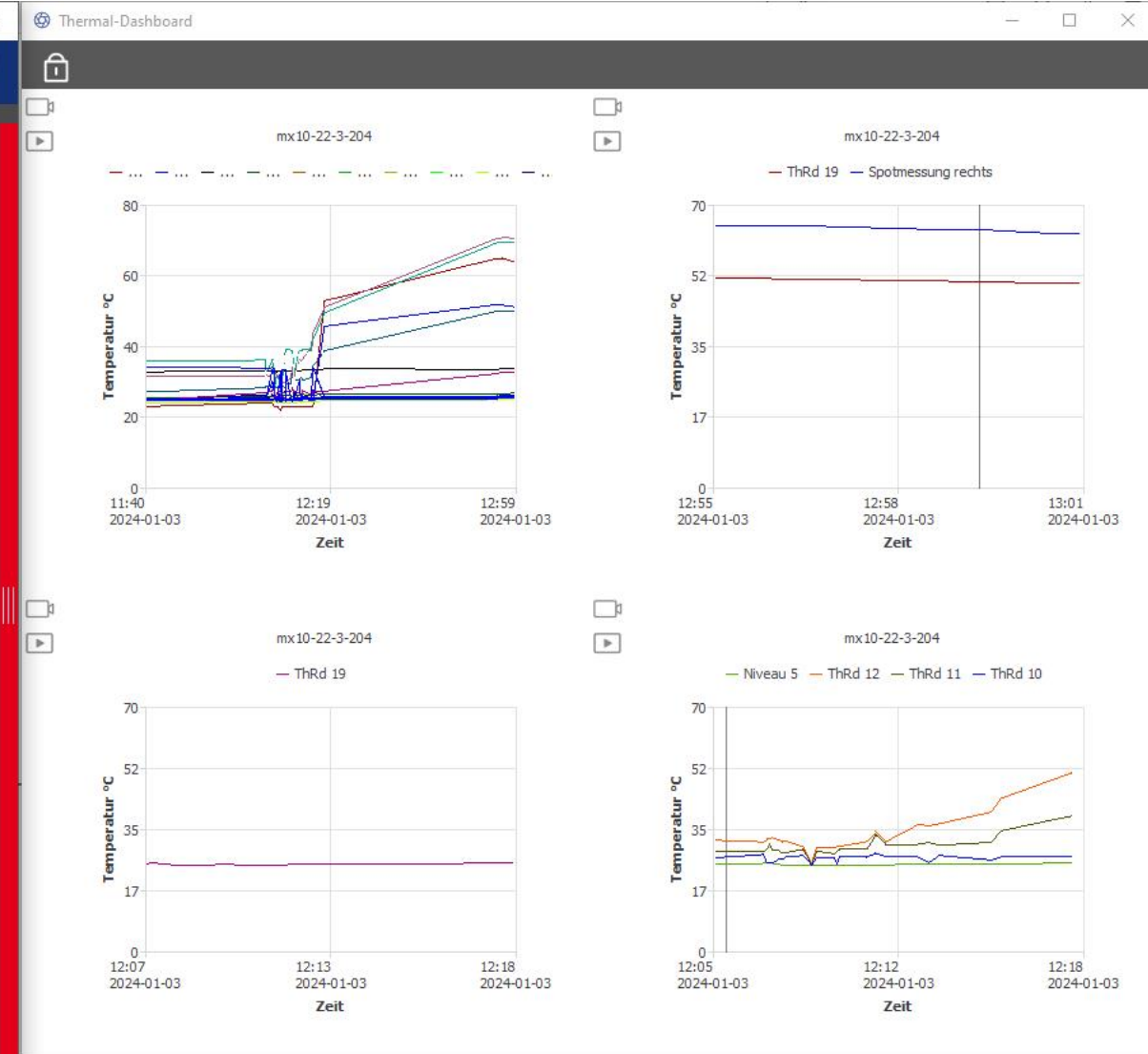
The use of the Thermal Dashboard is subject to a fee and requires the purchase of a corresponding license. With the base license, the temperature data of up to four MOBOTIX thermal cameras (from M15/S15 Thermal up to M73/S74 Thermal) can be displayed in the dashboard. A device license must be activated for each additional thermal camera.

Further information on licenses can be found here in the **MOBOTIX Community**: <https://community.mobotix.com/t/mxmc-thermal-dashboard-license-info/7323>

More about Thermal Dashboard can be found on the following pages.

Ordering information Thermal Dashboard licenses for MxManagementCenter 2.8		
Model name Order number	Description	MSRP price
Thermal Dashboard Base License for MxMC Mx-SW-MC-Th-DB-Bas	Activates the MOBOTIX Thermal Dashboard in the MxMC (from 2.8) and supports the MOBOTIX Thermal camera functions - Main application focus: - Live monitoring and monitoring of temperature-critical processes - Subsequent analysis of the temperature curve - Supports MOBOTIX P3, P6 and P7 thermal cameras - Restriction of the P3 to temperature graphs: no hot spot areas - License is activated via the MOBOTIX License Portal. - License is not transferable - One license per MxMC is required. - Thermal graphs of max. 4 thermal cameras can be integrated with one license - Additional thermal cameras require one MOBOTIX MxMC Device license per camera - Permanent license	On request from your MOBOTIX partner: https://www.mobotix.com/en/find-a-partner
Thermal Dashboard Base Demo License Mx-SW-MC-Th-DB-Bas-30	30-day demo license, available directly from MOBOTIX, please contact: sales@mobotix.com	
Thermal Dashboard Device License Mx-SW-MC-Th-DB-Dev	Activates an additional camera for the MOBOTIX Thermal Dashboard in the MxMC - Supports MOBOTIX Thermal cameras P3, P6 and P7 - Permanent license	

MOBOTIX ManagementCenter - Thermal Dashboard for one Camera



MOBOTIX ManagementCenter with Thermal Dashboard PlugIn

Thermal Dashboard for MxMC (license required)

The visualization of temperature values is used in many applications to prevent damage or disruption to process sequences in many control rooms. MOBOTIX provides this functionality as a system provider with the new Thermal Dashboard in the MxMC.

Main areas of application:

- Live monitoring and supervision of temperature-critical processes
- Subsequent analysis of the temperature curve
- Take measures before a critical temperature is reached
- The playback function can also be used to research emergency shutdowns or alarms retrospectively in order to avoid future failures by taking appropriate measures

The following main features are available to the user:

- Display of temperature graphs in live mode and in playback mode
- Playback navigation - double-click on the temperature graph to switch to the playback view at the selected point in time; in the playback view, the player jumps to the clicked points in time on the temperature graph
- Several threshold values can be defined with visual alarms if they are exceeded or not reached, including logging in the system log files
- Export of temperature data in CSV format with camera reference image and plot of the selected curve diagram
- Thermal graphs are displayed in a separate window

MxMC Thermal Dashboard at a glance

What you can do with it:

- Graphical display of temperature data from MOBOTIX thermal cameras of the P3 to P7 system platforms
- Visual or audible alarm when individual limit values are exceeded or not reached
- Dashboard cameras individually selectable via context menu
- Data export via CSV file
- Any network messages can be triggered via softbuttons in MxMC (e.g. switching off machines that are too hot, triggering warning sirens)

Those who can benefit directly:

- Anyone who wants to conveniently monitor the temperatures at several locations or thermal cameras at the same time
- Example applications: Monitoring of pipelines in industry, monitoring of cold chains in food production, early hazard detection in wood processing companies and in recycling plants and many more.

Most important advantages of the MOBOTIX solution?

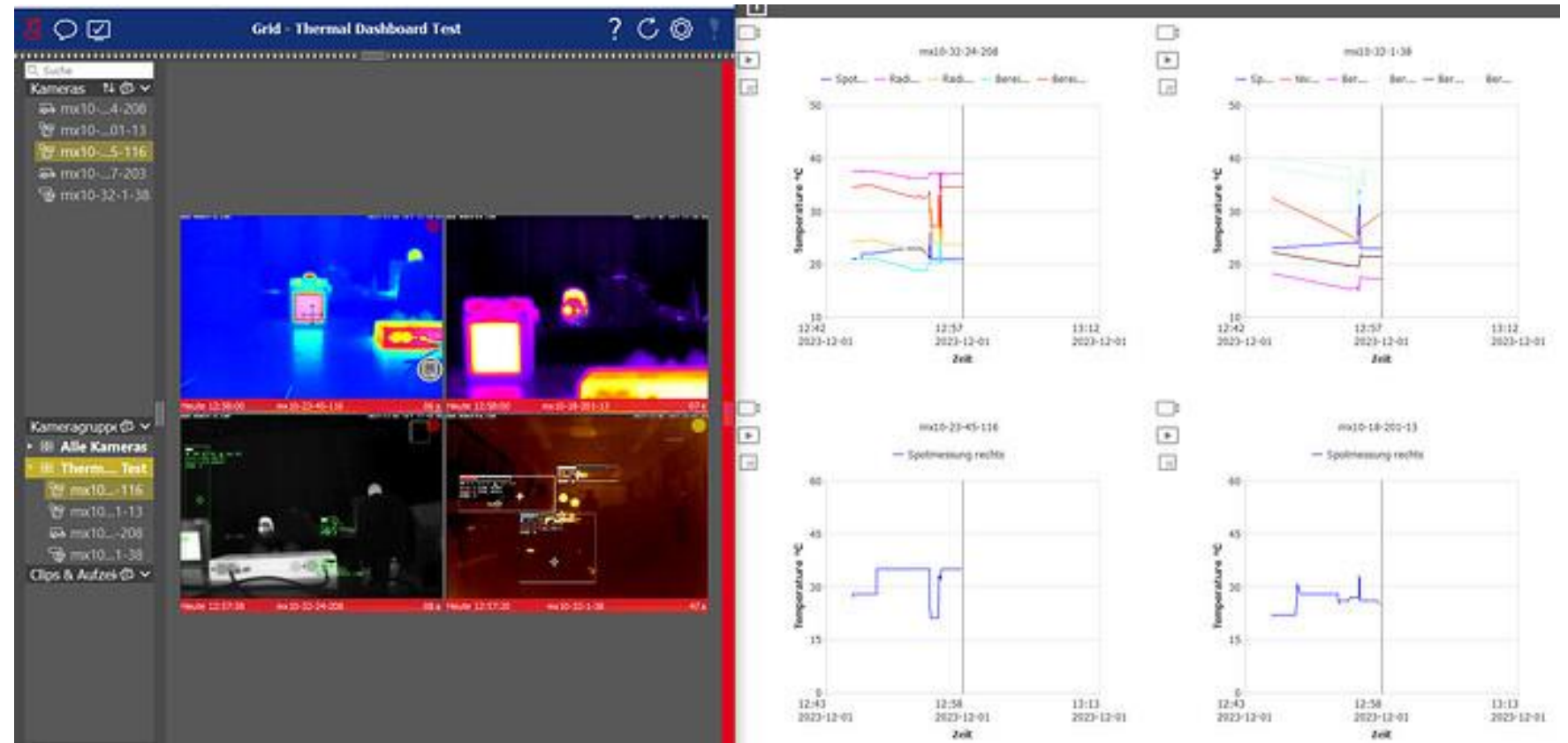
- Particularly lean and easy to use solution via standard PC (Win/Mac)
- No extra server required - thanks to decentralized MOBOTIX cameras with integrated video analysis

MOBOTIX ManagementCenter with Thermal Dashboard PlugIn

Example with four MOBOTIX thermal cameras:

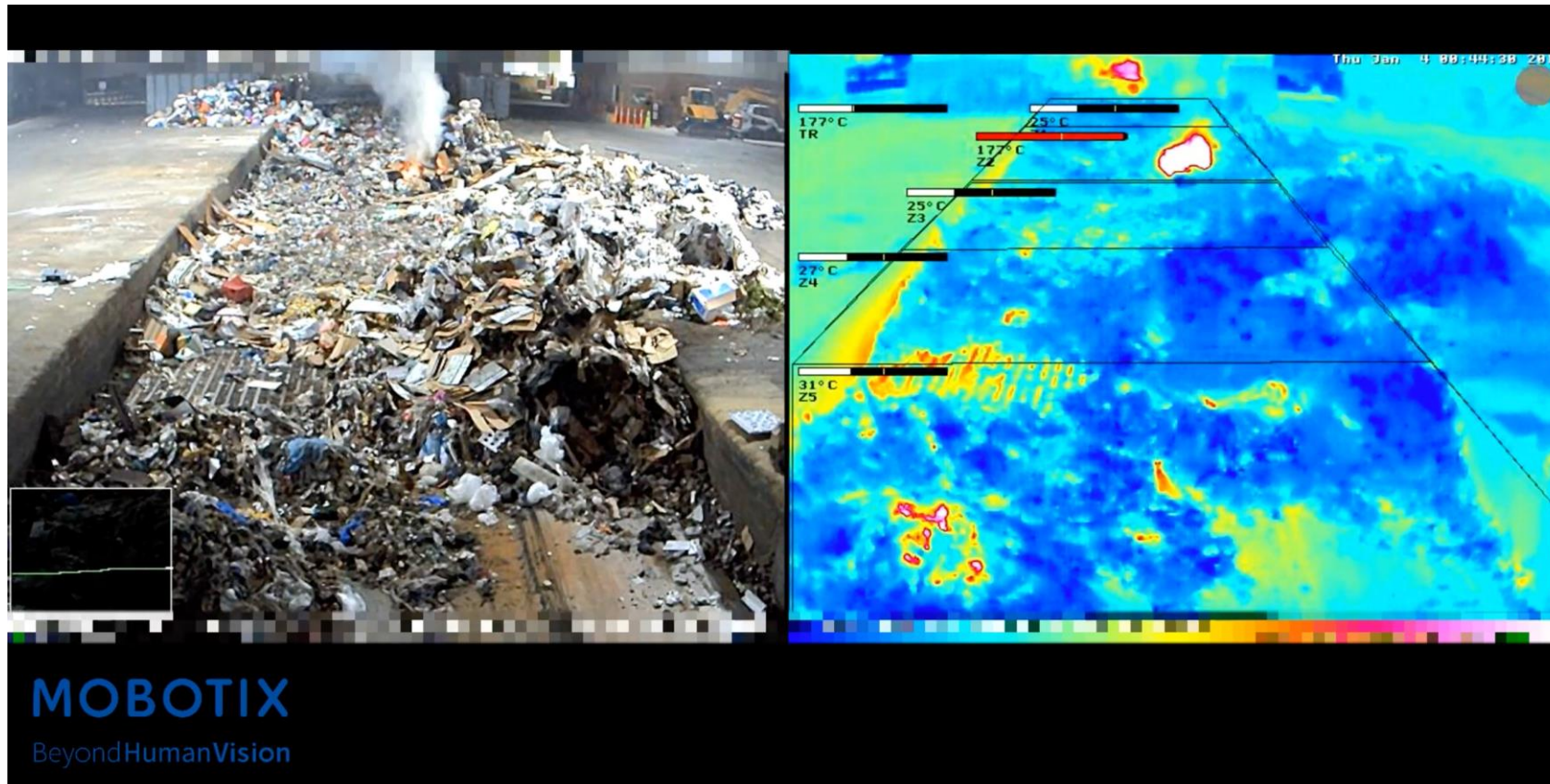
- M15 Thermal with spotmeter (requires Periodic Event)
- M16 Thermal with spotmeter
- M73 VGA with various radiometry events
- S74 CIF with various radiometry events

More information and sample images relating to the Thermal Dashboard in MxMC (version 2.8 and higher only) can be found online in the **MOBOTIX Community**:
<https://community.mobotix.com/t/mxmc-version-2-8-thermal-dashboard-eng/7325>



MOBOTIX ManagementCenter - Example Waste Disposal Plant

Real-life scenario: Thanks to the Thermal Dashboard, the control center can detect the steady rise in temperature before the flames develop and thus react particularly early (evacuate the room, initiate extinguishing)!



Link to the video: <https://www.youtube.com/watch?v=a-jWqFWedda>

BeyondHuman**Vision**

MOBOTIX

MOBOTIX AG
Kaiserstrasse
67722 Langmeil
Germany

+49 6302 9816-0
info@robotix.com
www.robotix.com

MOBOTIX, the MOBOTIX Logo, MxControlCenter, MxEasy, MxPEG, MxDisplay and MxActivitySensor are trademarks of MOBOTIX AG registered in the European Union, the U.S.A. and in other countries • Subject to change without notice • MOBOTIX do not assume any liability for technical or editorial errors or omissions contained herein • All rights reserved • © MOBOTIX AG