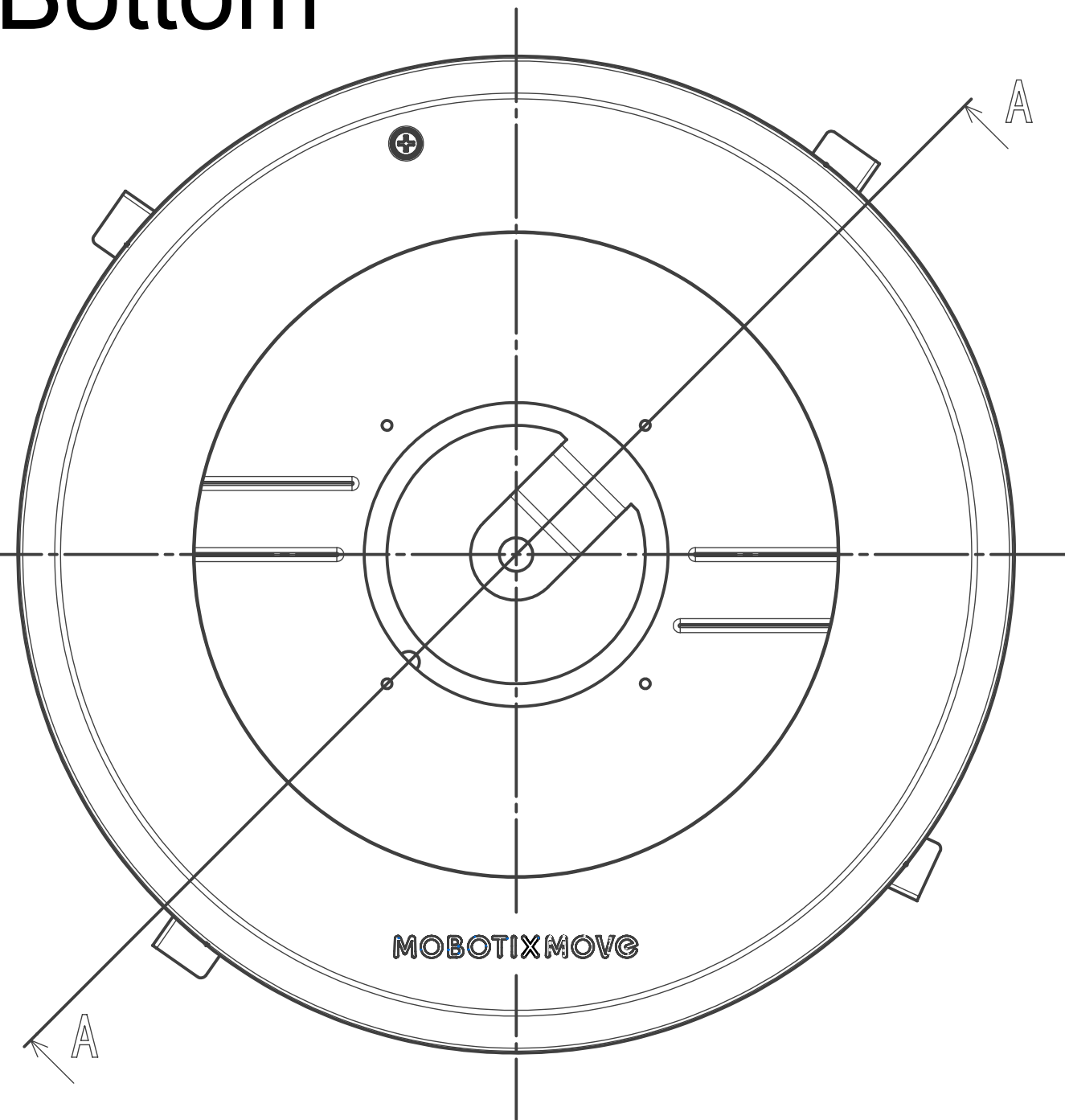
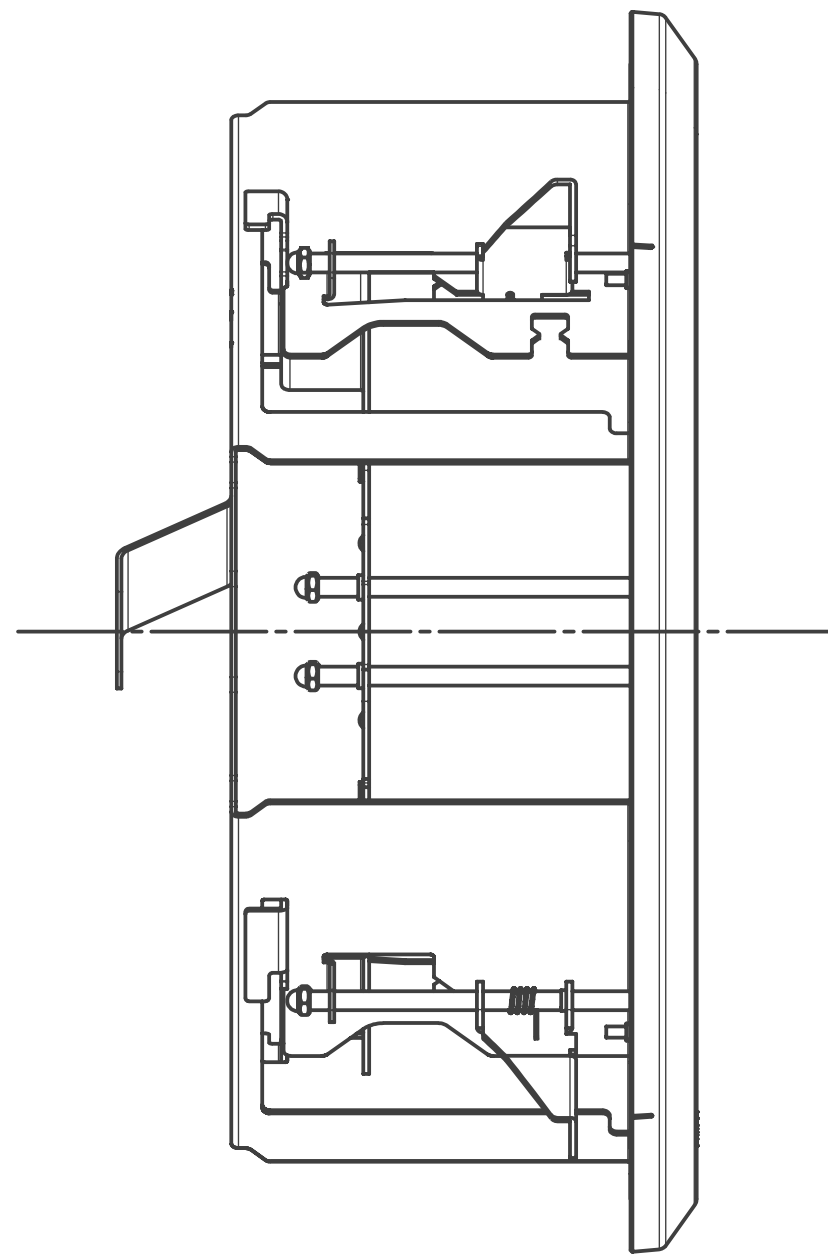


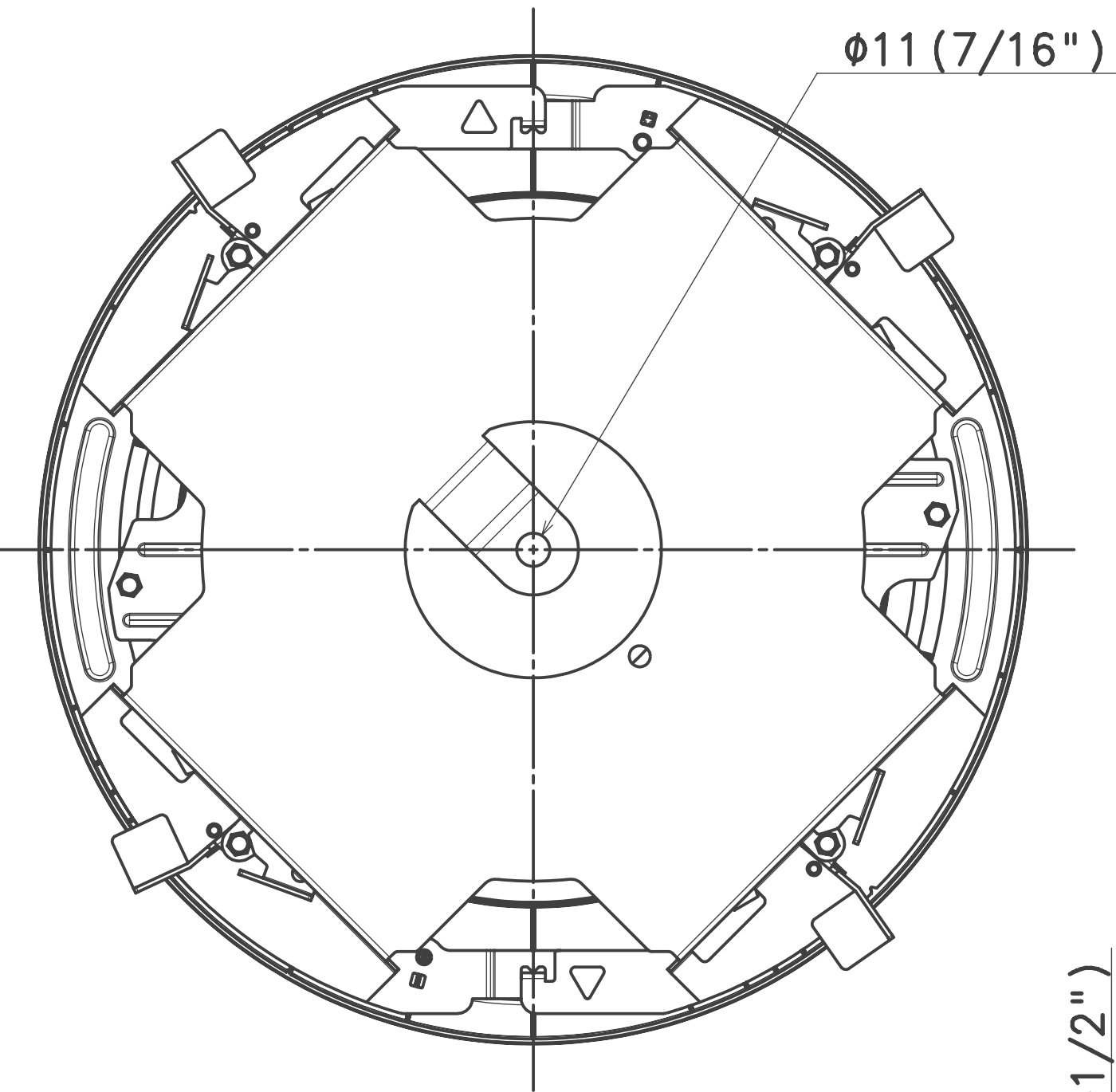
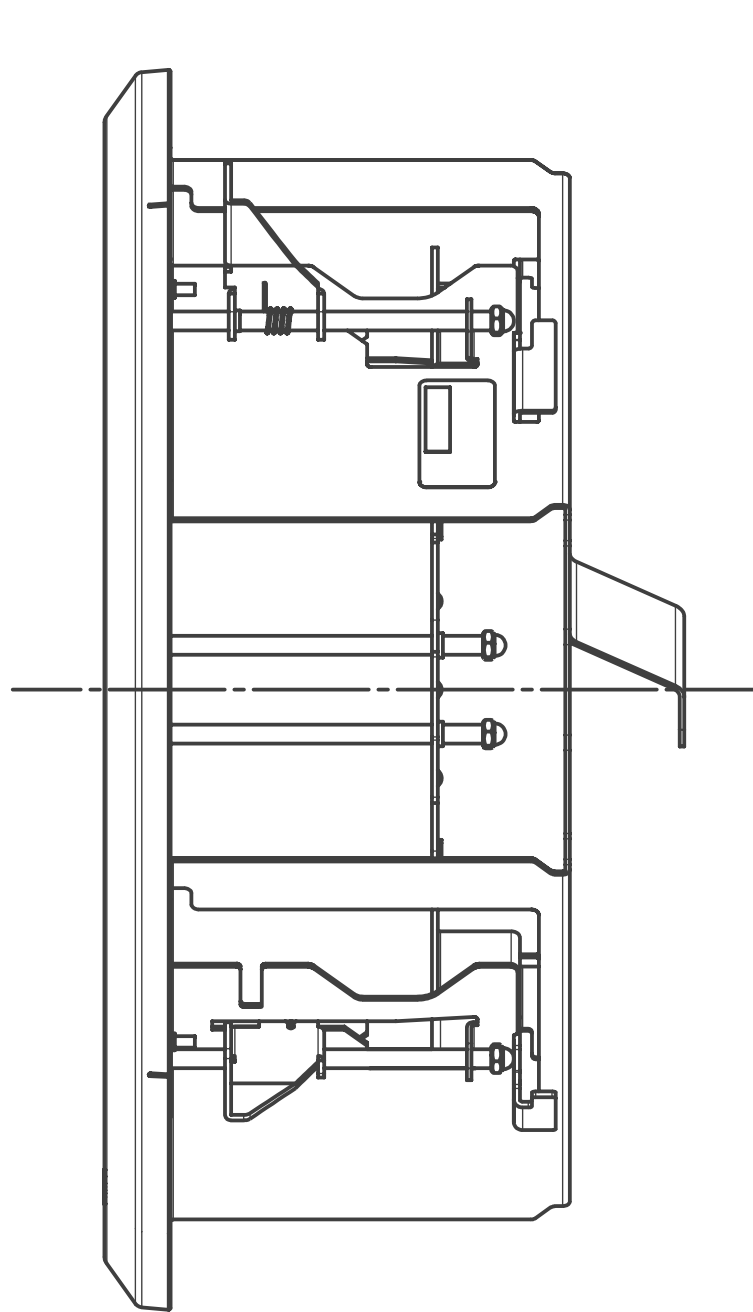
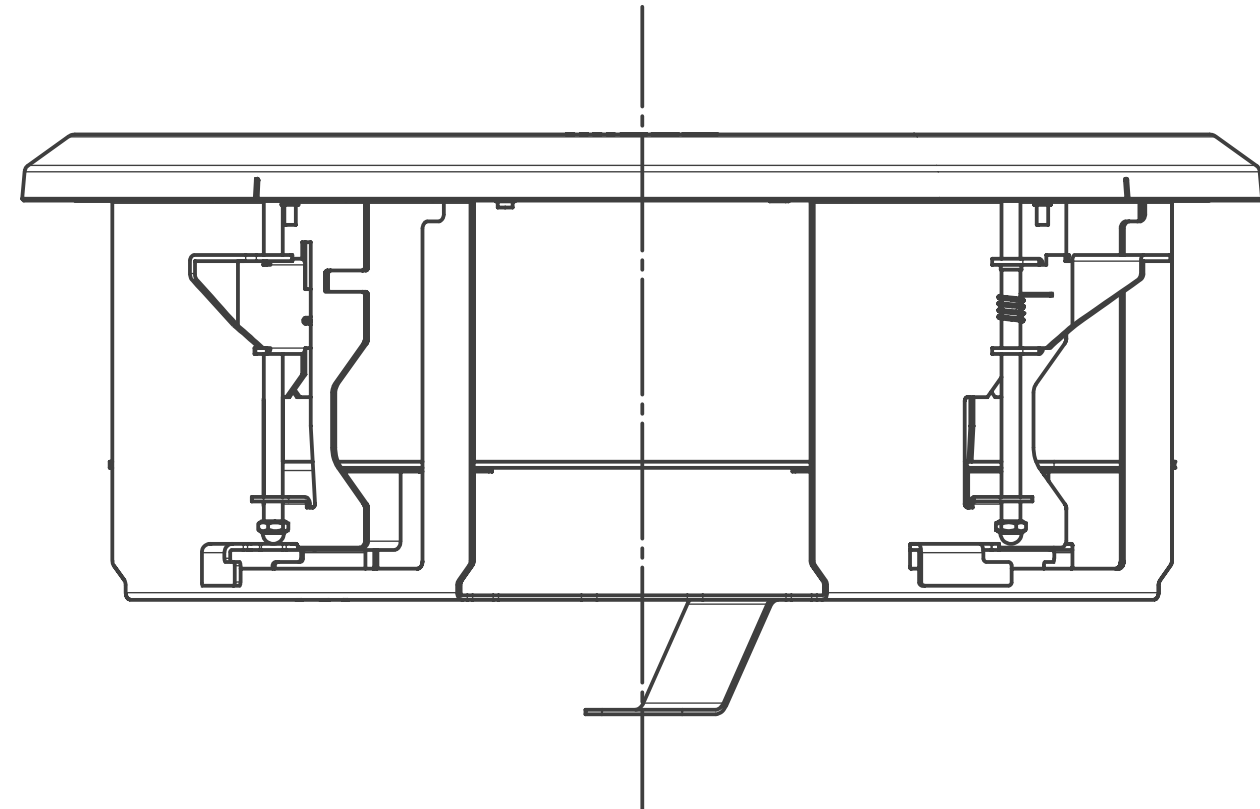
Front



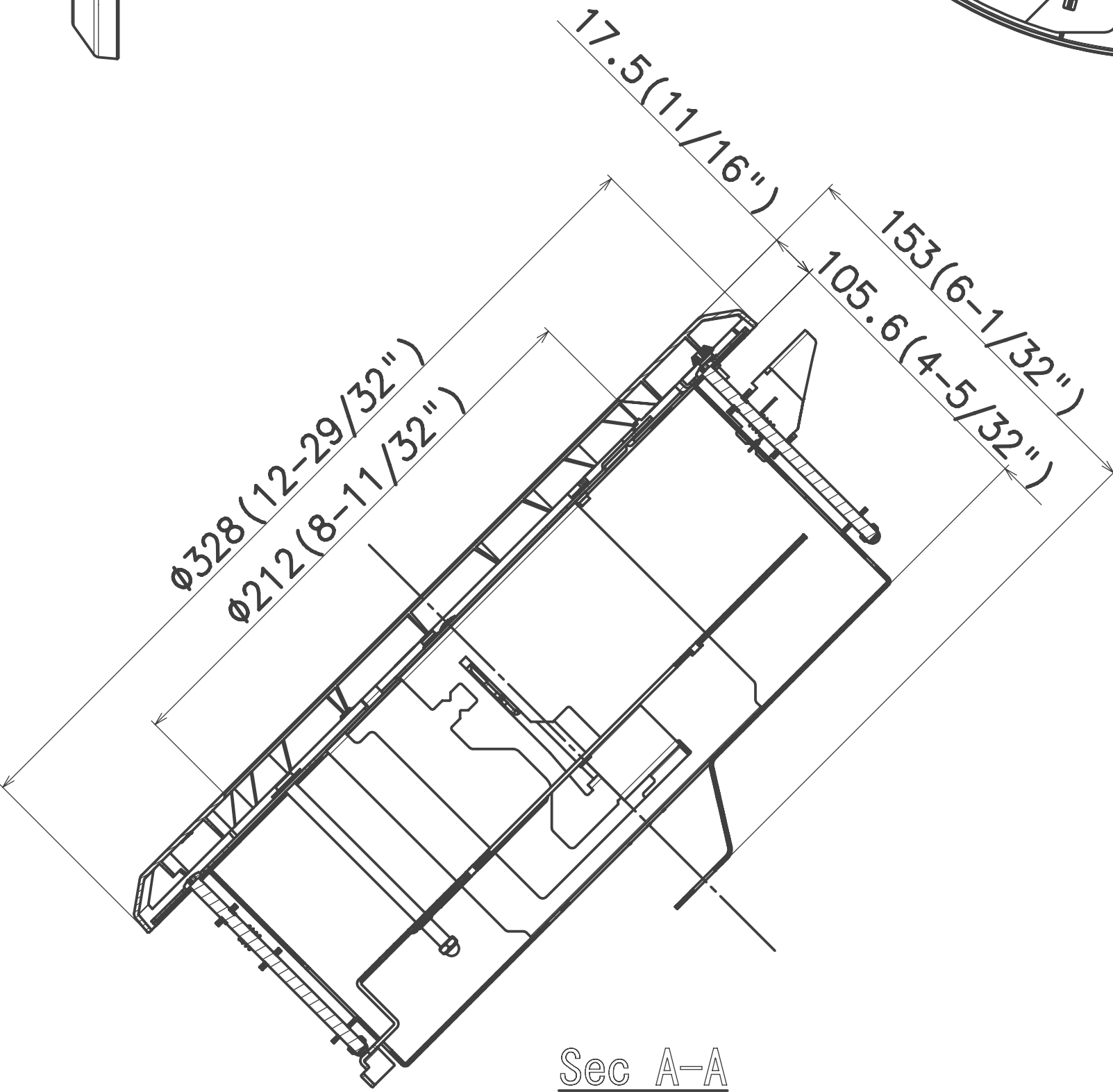
Bottom



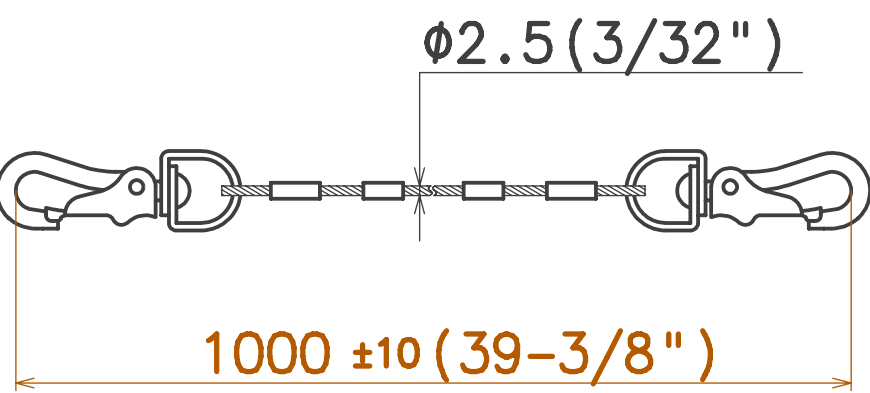
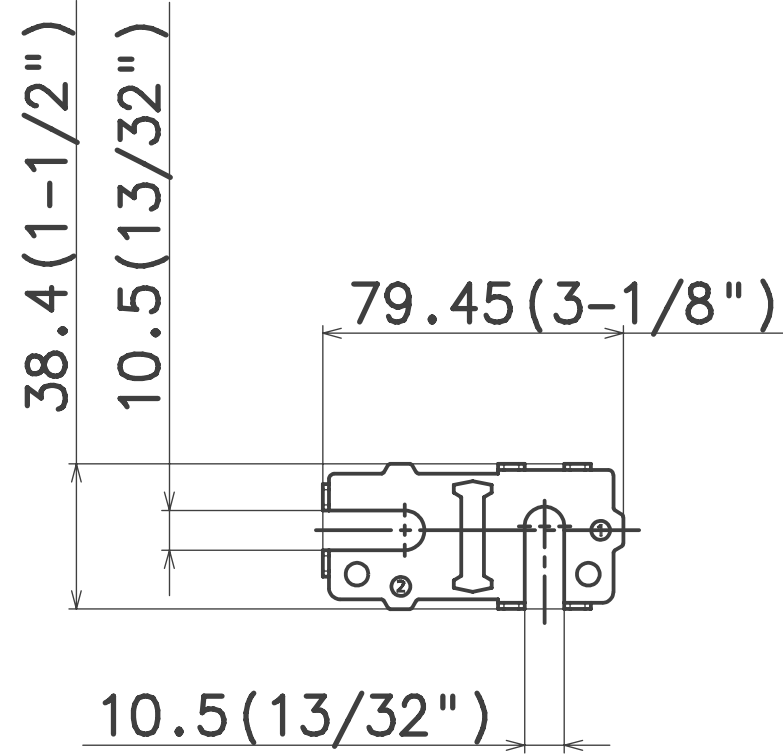
Side



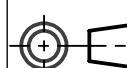
Top



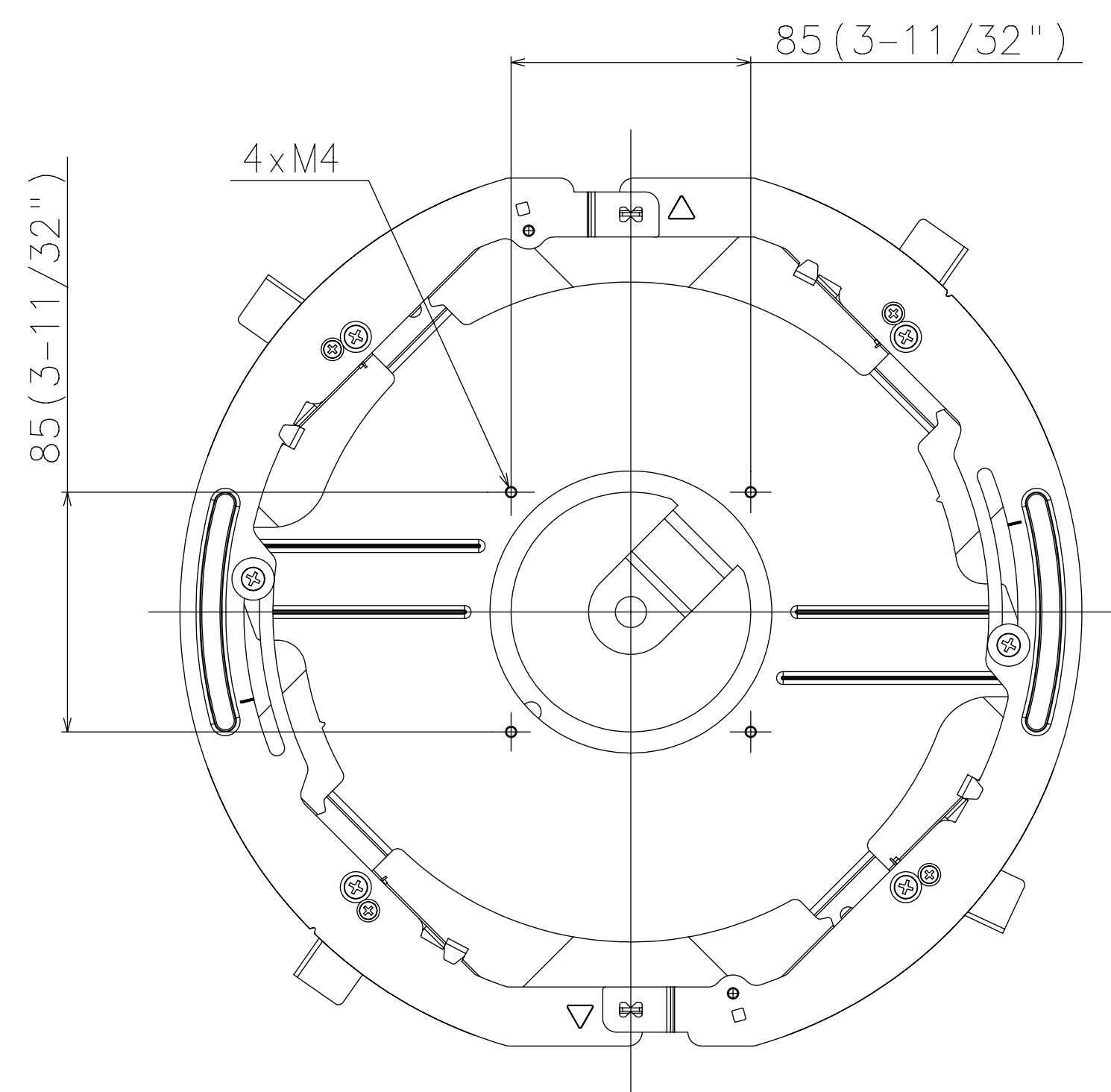
Sec A-A



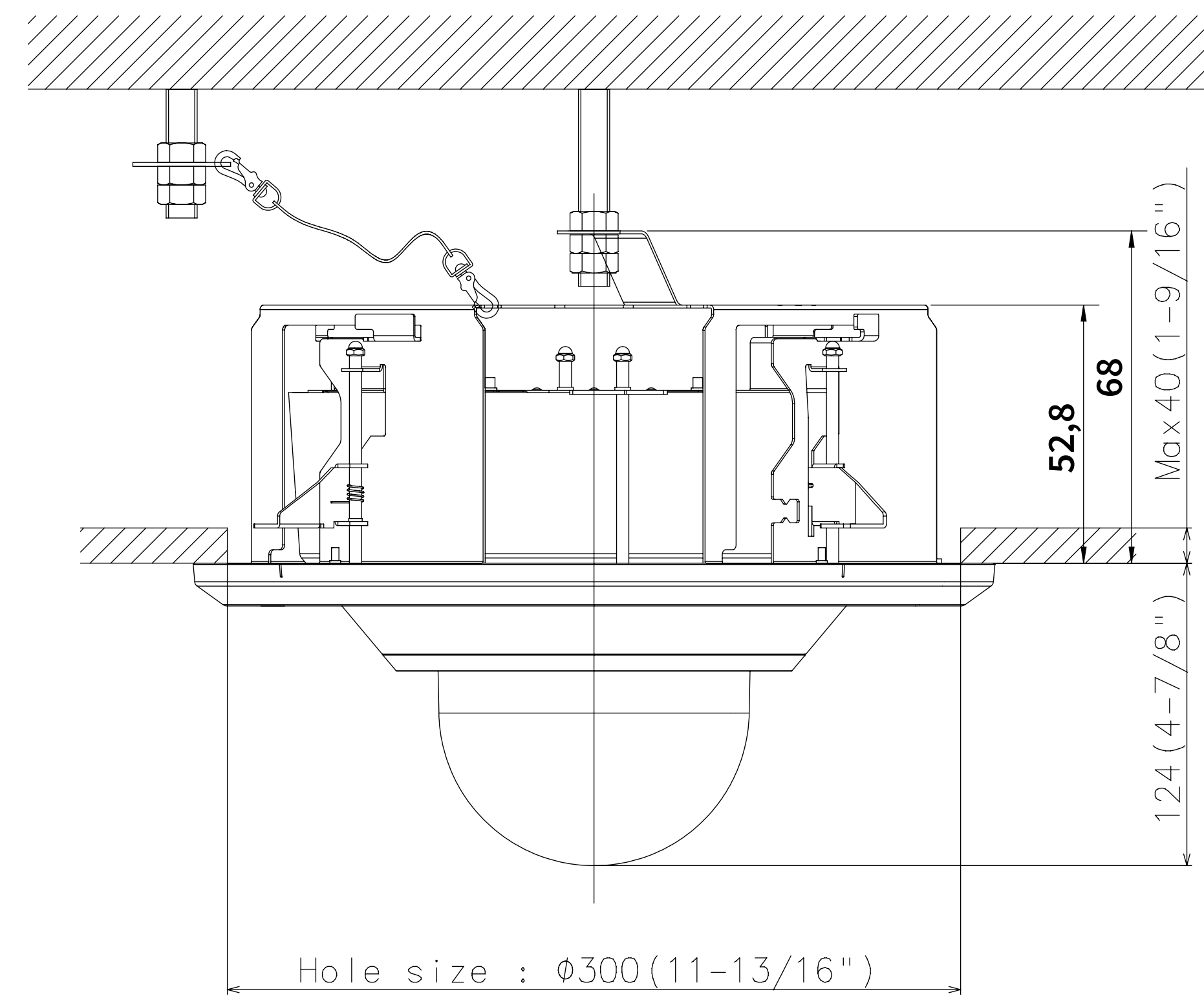
MOBOTIX does not take responsibility for the correctness and completeness of this data and recommends to verify the design and measures with the actual product delivered. Measures on goods delivered may vary due to manufacturing tolerances and environmental temperature material impacts. Technical specifications of the enclosed data is subject to change without notice. As all Design information are subject to MOBOTIX IPR, the reproduction and distribution of this data as well as the communication of its contents is prohibited and offenders will be held liable.

We reserve all rights for this technical document. It may only be used for purposes determined by us and not be reproduced nor duplicated for third party use. All dimensions are in millimeter.					Process	Date	Name	Material	Weight
					Control	16.04.2024	Jedzi	maximum deviation without tolerance date: article REACH and RoHS - compliant @ guideline 2011/65/EU	Scale
				Norm	CAD-A1	SolidWorks	In-Ceiling Set f. Multi. PTZ		
						20.103.378-01 Mx-M-VMSD-IC In-Ceiling Set f. Multi. PTZ			
Des.	Changes			Date	Name	Replacement			Sheet 1 of 2

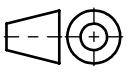

Example of combination with a camera



Removing decorative cover



Attach to Mx-VMSD1A-2021-IR-VA

We reserve all rights for this technical document. It may only be used for purposes determined by us and not be reproduced nor duplicated for third party use. All dimensions are in millimeter.			Date 16.04.2024	Name Jedzi	Material	Weight
Process Control					maximum deviation without tolerance date:	Scale 1:1
Norm	CAD-A1		SolidWorks		article REACH- and RoHS- compliant @ guideline 2011/65/EU	
				Example of combination		
				20.103.378-01 Mx-M-VMSD-IC In-Ceiling Set f. Multi. PTZ		
Des.	Changes	Date	Name	Replacement	Sheet 2 of 2	