



REDEFINE SECURITY

New Standards for Security



ROBOTIX
Beyond Human Vision

A Smarter Take on Video Security.

MOBOTIX delivers compact, AI-powered, and cybersecure video surveillance solutions that protect people, assets, and infrastructure – with maximum precision and minimal effort.

Contents

Chapter 1: New Times. New Threats.

Chapter 2: Essential and Important Entities Take Center Stage

Chapter 3: Digital Security Starts Now

Chapter 4: IEC 62676-4 – The International Standard for Professional Video Surveillance

Chapter 5: Redefine Security

Chapter 6: Smart Security in Action – Real-World Use Cases

Chapter 7: MOBOTIX – The Complete Solution Portfolio

Final Word: Shaping the Future of Security – Together.

Chapter 1

New Times. New Threats.

The world is changing – rapidly and unpredictably.

Technological progress is making our lives more connected and efficient. But with that comes a new reality: the threat landscape is growing more complex. Cybersecurity, vandalism and physical intrusions are no longer isolated issues – they are often interconnected. Every security gap is now a potential entry point, with very real consequences.

Because of this, businesses, public institutions, and government bodies are under increasing pressure. Expectations around safety and resilience are rising along with the responsibility to deliver them. In today's world, real protection must be holistic: physical, digital, and strategic.

Consider the facts:

- **Cybercrime** is now highly organized – with targeted attacks on industrial sites, utilities, and public infrastructure.
- **Physical threats** like vandalism, intrusion, and sabotage are everyday risk factors in many sectors.
- **Espionage and manipulation** endanger sensitive data, intellectual property, and automated processes – often undetected.
- **Geopolitical tensions** are driving state-sponsored cyber offensives on critical infrastructure.

Did you know?

According to the **Allianz Risk Barometer 2024**, cyber incidents and business interruptions are now ranked among the top global business risks – surpassing natural disasters and pandemics.

Security is no longer a “nice to have”

For operators of critical infrastructure, public institutions, and many businesses, it's a legal obligation. Failing to implement adequate protection can lead to data loss, operational disruptions, hefty fines, reputational damage – or even shutdowns.

Governments and international institutions are responding with new legislation and regulations:

- **NIS2 Directive (EU)**
- **Cyber Resilience Act (EU)**
- **U.S. and Global Frameworks like the NDAA**

New laws no longer ask if something might happen – only how well you're prepared when it does.

MOBOTIX – A Smarter Take on Video Security

Security must not be reactive – it must become a **core component** of your business strategy.

When people, systems and data need to be protected, clarity, responsiveness and trust count. In any industry, in any weather, at any time of day.

Traditional, large-scale security systems are reaching their limits – they're expensive, rigid, and often inflexible. The future belongs to smarter solutions: compact, connected, AI-powered, and efficient. Systems that integrate seamlessly into existing environments and deliver much more than just surveillance.

Whether it's a complex factory site, sensitive hospital area or highly frequented station forecourt: **Intelligent video security with MOBOTIX detects risks before they become a problem.** Thanks to smart camera architecture, AI-supported analysis and uncompromising cyber security, solutions are created that understand what really matters and act autonomously in an emergency.

*A look ahead: Chapter 6: Smart Security in Action
– Real-World Use Cases*

*Here we show you how MOBOTIX video technology solves
real problems – concretely, efficiently, future-proof.*



REDEFINE
SECURITY

Chapter 2

Essential & Important Entities Take Center Stage

Gone are the days when only large corporations faced strict security obligations.

Today, responsibility is shifting to **organizations of all sizes** – especially those with systemic relevance. Regulations like the **NIS2 Directive**, the **Cyber Resilience Act**, and frameworks such as the **NDA** in the U.S. make one thing clear: Security is no longer optional. And it's no longer limited to IT alone.

Modern regulations identify two main categories of organizations that must comply:

Essential Entities

Organizations critical to everyday life and public safety, such as:

- Energy providers and utility companies
- Operators of transportation infrastructure (airports, rail stations, ports)
- Hospitals and care facilities
- Financial institutions
- Water and waste management services
- Cloud service providers and data centers

Important Entities

Organizations that may not deliver vital services but still impact public infrastructure and economy. Examples include:

- Postal and courier services
- Waste disposal and recycling companies
- Machinery and industrial equipment manufacturers
- Chemical and pharmaceutical companies
- Food production and logistics

Why Does This Classification Matter?

Because it comes with **legal consequences**. As soon as a company falls into one of these categories, specific requirements apply – including regulations around video surveillance, physical access control, network security, and incident reporting.

While the **NIS2 Directive** and **CRA** are EU-driven, the trend is global:

- In the **United States**, the **National Defense Authorization Act (NDA)**, various executive orders, and sector-specific guidelines enforce cyber and physical protection.
- Across **Asia**, the **Middle East**, and **Australia**, similar compliance frameworks are being introduced – with increasing focus on digital resilience and operational auditability.

MOBOTIX Stands Ready – Worldwide

Security is not just a local promise. MOBOTIX solutions are built for international deployment, meeting regulatory requirements and performance demands across the globe – from clinics in Germany to solar farms in California.

With **intelligent video technology** that does more than observe. It understands, records, and responds. MOBOTIX empowers organizations to take control of their safety, proactively and globally.

MOBOTIX
BeyondHumanVision

Chapter 3

Digital Security Starts Now

Digitization, automation, and global networking are creating new opportunities – but also new risks.

As traditional systems age, security gaps become mainstream and breaches are no longer rare exceptions. That's why governments and institutions worldwide are introducing clear rules that define how to build, maintain, and prove security.

Two Cornerstones of Modern Security Regulation

NIS2 Directive – Cybersecurity Across Sectors

Starting in **October 2024**, the NIS2 Directive will apply to companies across **18 essential and important sectors** in the European Union.

It introduces strict requirements in **areas such as:**

- Risk management and business continuity
- Incident reporting
- Physical and cyber protection
- Documentation and accountability

What's new? For the first time, **medium-sized companies** are legally required to implement comprehensive cybersecurity and physical security strategies – not just large enterprises.

Which sectors are affected?

NIS2 classifies organizations into two categories – **Essential** and **Important** entities – spanning a wide range of industries, including:

Essential Sectors:

- Energy (electricity, oil, gas)
- Transport (air, rail, maritime, road)
- Banking
- Financial market infrastructure
- Health (hospitals, clinics)
- Drinking water and wastewater
- Digital infrastructure (cloud services, data centers, DNS)
- Public administration
- Space

Important Sectors:

- Postal and courier services
- Waste management
- Chemicals
- Food production and distribution
- Manufacturing of critical products
- Research
- Digital providers not included under essential entities
- Other sectors with significant economic or societal impact

Each of these sectors is required to implement security measures, report incidents, and undergo audits to ensure full compliance.

Cyber Resilience Act (CRA) – Secure by Design

Set to go into effect in **2027**, the CRA applies to **manufacturers and distributors** of digital products – including cameras, recorders, and video management systems.

Key requirements include:

- Security must be integrated from the start (“Security by Design”)
- Devices must be secure by default upon delivery
- All products must carry **CE certification** to verify compliance
- Manufacturers are **liable** for security flaws

That's a game-changer. It shifts responsibility directly to technology providers – and raises the bar for product development across the industry.

Global Influence: Beyond Europe

Although NIS2 and CRA are European laws, their impact is global.

- **Multinational corporations** must comply with these standards to do business across borders.
- **U.S. companies** face growing pressure from NDAA and TAA (Trade Agreements Act) requirements.
- Countries across **Asia-Pacific, the Middle East, and South America** are adopting similar principles to strengthen critical infrastructure resilience.





Compliant Video Security

MOBOTIX develops video and security technology that is designed from the ground up to be secure – with a clear focus on applicable standards and legal requirements:

- **Data protection-compliant, cyber-secure and audit-supporting**
- **Adaptable to industry-specific requirements**
- **Geared towards demanding fields of application such as energy, healthcare, industry and public institutions**
- **Detecting anomalies in real time**
- **Integrating with broader risk management systems**

We are aware that regulatory requirements are constantly evolving. We therefore actively deal with current and upcoming regulations such as GDPR, NIS2, CRA and **ETSI** – and close potential security gaps quickly and efficiently through regular updates.

Thanks to our largely self-developed hardware and software, we are particularly responsive – in the interests of our customers. This includes:

- **Free software updates for many years** after purchase – for lasting security
- **Concrete assistance**, e.g. through the [MOBOTIX Cyber Protection Guide \(PDF\)](#)
- **In-depth information and training for our partners and customers**, e.g. on setting up video systems in compliance with data protection regulations. → [Data protection & GDPR white-paper](#). → [MOBOTIX trainings & courses](#).

With MOBOTIX, you are not only investing in a solution that works today – but one that will also protect you tomorrow.

Chapter 4

IEC 62676-4 – The International Standard for Professional Video Surveillance

What makes video security truly professional?

Not just the camera quality, not just the software functions – but an overall system that is well planned, correctly installed and operated in a traceable manner. This is precisely where the international standard **IEC 62676-4:2024** comes in. For the first time, it provides a globally standardized set of rules for the installation, operation and maintenance of video surveillance systems (VSS) in the field of security.

Since its technical revision in 2024, it not only offers clear requirements – but it is also increasingly becoming the reference for anyone who wants to make their safety verifiable and auditable.

What is IEC 62676-4 about?

The standard describes the complete life cycle of a professional video surveillance solution: from **risk analysis and planning** to **technical implementation, operation, maintenance and training**. It also defines minimum standards for technology, personnel and processes – precisely the factors that are crucial in a networked security landscape.

Why is the standard so relevant?

At a time when more and more legal requirements are being imposed on companies, IEC 62676-4 finally creates a binding set of rules. Companies that follow these guidelines are actively documenting their commitment to professional, compliant security design.

From theory to practice: The core requirements of the standard

Instead of a dry list, here is a fluid overview of the most important areas:

- 1. Planning & Conception:** It all starts with a risk analysis documented in writing. Based on this, a security concept is developed that defines protection goals and contains a clear list of requirements (operational requirements) – such as image quality, monitoring goals or response times.
- 2. Technical Requirements:** Camera systems must be selected to suit the application: Resolution, light sensitivity, frame rate, redundancy – everything must match the application scenario. Network structure, storage systems and IT security are also integral components.
- 3. Operation & Maintenance:** A professional video system does not end with commissioning. Regular visual on-site checks, maintenance by certified specialist personnel and complete documentation in the operating log are mandatory components – as are clearly regulated access rights to the control center.
- 4. Training & Expertise:** Only trained and certified specialists may carry out planning, installation and maintenance. The standard requires specific expertise – and MOBOTIX delivers it: with practice-oriented training courses and the [MOBOTIX Campus](#).



MOBOTIX – In Compliance with the Standard

For MOBOTIX, IEC 62676-4 is not just a criterion – it is a benchmark.

We and our certified partners actively help you to plan, install and use our video systems in compliance with the standard:

- **System planning** exactly according to standard specifications
- **Specialist training courses** with direct reference to IEC requirements
- **Certified partners** for standard-compliant implementation

The Overview of IEC 62676-4 in 5 points:

1. Every video system needs a **security concept documented in writing** – with a risk analysis and protection objectives
2. A **detailed specification sheet** must be available (operational requirements)
3. Cameras, networks and storage must be **selected in accordance with standards**
4. **Maintenance & operation** require clear processes, regular checks and complete documentation
5. **Training & proof of competence are mandatory** – for everyone involved

Conclusion:

If you want to implement video security today in a professional, auditable and future-proof manner, there is no way around IEC 62676-4:2024. MOBOTIX and its certified global partners actively support you in implementing your video security system in compliance with the standard!

REDEFINE SECURITY

MOBOTIX DualDome
(-30 to +60 °C) • Iceland, Vatnajökull –
Europe's largest glacier



Chapter 5

Redefine Security

Security today requires more than just technology.

It needs trust. It needs solutions that not only work – but also look ahead, adapt and can withstand any situation. In a world full of compromises, MOBOTIX deliberately chooses a different path: uncompromising quality, smart technology, reliable service. No empty promises – but concrete solutions for a complex reality.

What does that mean for you?

- Not just observing, but **understanding**.
- Not just recognizing risks, but **actively preventing** them.
- Not bigger – but **smarter**.

With a system. With strategy. With MOBOTIX.

Built for the toughest applications

When security counts, no system should fail at the crucial moment. That's why MOBOTIX relies on uncompromising durability – from the first screw to the last line of software.

Our cameras are made of fiberglass-reinforced plastic, conceal cables and are resistant to salt water, extreme temperatures and weather conditions. The **MTBF** (Mean Time Between Failures) is **over 9 years**. This is not just theory – this is industrial quality in practice.

Intelligence directly at the source – with edge computing

Why send data through an entire network when it can be analyzed directly in the camera? MOBOTIX systems process image data decentrally – with AI functions directly at the scene of the event.

- **No central server required** – no single point of failure
- **Lower bandwidth**
- **Greater reliability**
- **Reaction speed in real time**

This decentralized system architecture was and is a central feature of MOBOTIX IoT systems developed in-house:

Each camera works autonomously – with integrated image analysis, memory management and alarm processing.

This eliminates the need for central servers, reduces the load on the network and minimizes security risks.

At MOBOTIX, edge computing is not the future – it's a reality. Since 1999.

Cybersecurity and data protection – deeply embedded in the system from the outset

At MOBOTIX, cyber security is not an afterthought – it is a promise that is thought through, built and maintained.

Because real security does not end at the housing of a camera. It starts with the architecture, runs through every firmware update and extends to the cloud connection.

MOBOTIX consistently relies on:

- **Privacy by default** – data protection-friendly default settings
- **End-to-end encryption** – for all relevant communication channels
- **GDPR compliance** – at system, data and application level
- **Regular security updates** – no subscription, no excuses



Find out more
MOBOTIX CACTUS CONCEPT

MOBOTIX goes much further than many providers on the market: Our technologies have been repeatedly tested by the independent SySS GmbH – one of the leading providers of penetration tests in Germany.

We also have certifications from international IT security institutes such as **CNPP** and **White Hat**.

Our claim: products that not only **promise but are actually secure** – **verifiable and testable**.

MOBOTIX Cactus Concept

Our own **CACTUS CONCEPT** is a visible symbol of this philosophy:

A comprehensive security approach that interlinks hardware, software and processes – from the first development step through to ongoing operation.

This is how we guarantee **reliable cyber security**, certifiable data protection concepts and uncompromising sovereignty.



We also meet international requirements such as the **NDA** (**National Defense Authorization Act**) or **TAA** (**Trade Agreements Act**) – for maximum security worldwide.

Certified quality – in black and white

Where others want to score points with marketing, MOBOTIX delivers proof. Our solutions meet the highest testing standards:

- Independently tested by SYSS, VdS, EN54, CNPP, Applus
- HIPAA & BFST compliant applications
- TÜV certification in accordance with ISO 9001:2015 for development, production, sales and support

That's not an extra – that's our claim.

MOBOTIX
BeyondHumanVision



AI-supported video analysis – more than just motion detection

Our certified apps recognize patterns, symbols and behaviours – context-based and industry-specific. From perimeter protection to care facilities.

- **Recognition and classification of objects, direction, speed, car models** (manufacturer, type, color)
- **Symbol-based detection** (e.g. color changes, characters, numbers, barcodes)
- **Thermal validation for fire protection**
- **AI-based alarm filtering** to reduce false alarms

Open interfaces – full system integration

MOBOTIX is designed to be open: our systems can be seamlessly integrated into existing environments – whether building automation, security platforms or industrial control systems.

- Integration via **MOBOTIX HUB**
- Support for **KNX, Modbus, MQTT and much more**
- Wide range of **API and plug-in options**
- **Compatibility with third-party systems** guarantees futureproofing

Conclusion:

With MOBOTIX, you are not choosing a product – you are choosing a system that thinks about tomorrow today. A system that lives and breathes quality, takes security seriously and generates intelligent solutions from innovation.



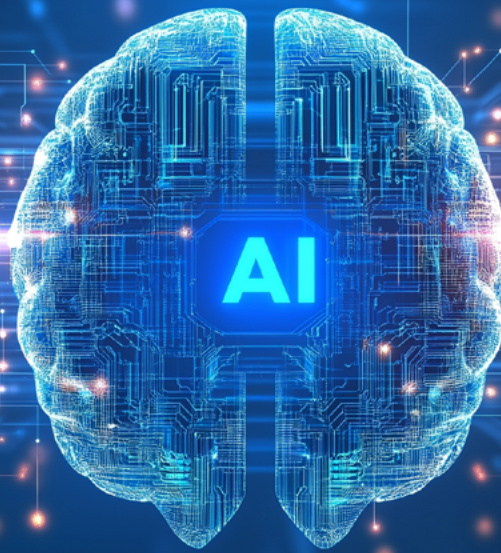
MOBOTIX Software
Everything from a single source



MQTT



MOBOTIX
BeyondHumanVision



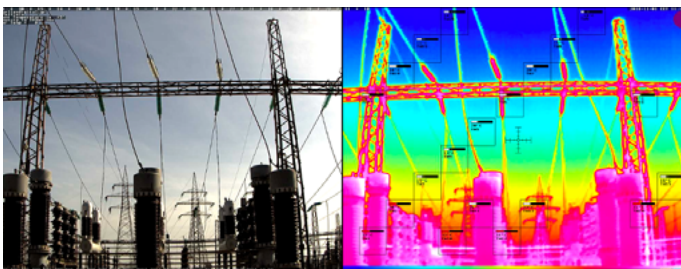
Chapter 6

Smart Security in Action – Real-World Use Cases

Smart security is not a concept for films – it’s a reality.

Wherever MOBOTIX systems are used, they make the difference: they protect people and assets, minimize risks, automate processes – and do so quietly, efficiently and with maximum reliability.

In this chapter, we show **how sophisticated video security works in a wide range of industries** – from factory premises to emergency rooms and recycling plants.



Perimeter protection with brains

An industrial site, at night, in fog. A classic scenario for false alarms – triggered by animals, wind or weather fluctuations. Not so with MOBOTIX.

The combination of thermal cameras, high-resolution optics and the Irisity AI app reliably detects what really counts: People and vehicles with a potential threat – not shadows or raindrops. The alarm remains silent when nothing is happening – and sounds at exactly the right moment.

Scenario 1 – A wind farm on the coast: Storms, fog, changing light – a nightmare for classic motion detection. But MOBOTIX thermal cameras and the AI app from Irisity reliably filter out disruptive factors and only report genuine threats. The security crew can rely on every alarm – 24/7.

Scenario 2 – A substation in an industrial area: Access points are secured, but a fence alone does not provide protection. Thanks to mobile surveillance towers with a combination of thermal and optical systems, every approach is detected – even at night and in conditions of zero visibility.

Typical applications: Energy supply, logistics center, airports, outdoor storage, border protection



MOBOTIX M ONE
Camera



MOBOTIX M ONE

Eliminate false alarms – with the camera that decides for itself

A truck drives into the parking lot on a company site. Shortly afterwards, an employee. No reason to panic – and no reason for false alarms either.

The MOBOTIX M ONE camera with integrated ActivitySensor ONE recognizes movement patterns, distinguishes objects and evaluates the direction – directly in the camera, without additional hardware.

This saves effort, conserves resources and makes security intelligent.

Scenario 1 – Industrial park with shift operation: There is a lot of movement at peak times – but only certain vehicles are allowed to enter certain zones. The MOBOTIX M ONE with ActivitySensor ONE detects the direction and type of object – false alarms caused by employees walking or other objects are a thing of the past.

Scenario 2 – Administration building: An alarm in the middle of the night – false alarm? Not with MOBOTIX: The camera recognizes that it is a rolling garbage bin and not a person. The security service saves an unnecessary deployment.

Locations: Entrances, industrial courtyards (indoor and outdoor), perimeter.



REDEFINE SECURITY

MOBOTIX MOVE SpeedDome



MOBOTIX M73 Thermal



Overview and details – intelligently solved with minimal camera use

How do you maintain an overview in a warehouse with multiple access points without cluttering every corner with technology?

Solution 1: Optical camera & PTZ SpeedDome – intelligence in a double pack

One or more optical or thermal imaging cameras detect relevant scenes in the area to be monitored (e.g. a person on the premises after hours).

Another PTZ camera is automatically aligned with the trigger – for razor-sharp detailed views in real time.

The interplay of wide-angle surveillance and targeted zoom is fully automatic, AI-based and takes place around the clock.

Example 1 – Efficient perimeter protection: A MOBOTIX Thermal ECO camera monitors the perimeter of a plant, the PTZ automatically zooms into the relevant area when movement is detected and then automatically tracks the movements using LiDAR technology. **Plant security has everything in view** – without multiple screens or fixed operation.

Example 2 – Station forecourt or public event: A hemispheric camera with 360° all-round view provides a complete overview of an area, while the PTZ dynamically focuses on flows of people or incidents. **Also ideal for temporary security solutions with maximum efficiency.**

Solution 2: One camera, four viewing directions – with MOBOTIX MOVE Multisensor

Instead of two separate cameras, the **MOBOTIX MOVE 4-channel vandal multi-sensor camera** offers an even more compact option:

- Four individually alignable camera modules in one device; additional PTZ module optionally integrated
- Ideal for large areas with multiple entrances and exits
- Less cabling, less installation work, lower operating costs

Particularly suitable for applications where large areas need to be monitored simultaneously with just one device – without having to do without an optional PTZ mechanism.

More information: [MOBOTIX MOVE multi-sensor cameras](#)

Perfect for: Railroad stations, large warehouses, production lines, industrial plants, hospitals, power generation, public spaces



MOBOTIX MOVE Vandal Multisensor



MOBOTIX SYNC
The intelligent Data Center



Control at the gate – yard management today

In logistics, every minute counts. Whoever drives in or out must be registered – quickly, reliably and documented.

With MOBOTIX LPR solutions, operators always have an overview. License plates are recognized, access documented, barriers controlled – automated and GDPR-compliant.

Scenario 1 – Freight forwarder with over 100 trucks per day:

Thanks to the MOBOTIX HUB solution with OCR app directly in the camera and MOBOTIX HUB as VMS, vehicles are automatically recognized on entry and exit, barriers are opened, and time windows are documented. The control center sees all processes in real time – even remotely via tablet.

Scenario 2 – Plant with access regulation according to time:

Delivery traffic only in the morning, private visitors in the afternoon? No problem. The LPR app from Vaxtor works together with MOBOTIX HUB, recognizes license plates and checks the authorization – automatically and in compliance with data protection regulations.

Perfect for: Logistics, factory premises, freight forwarders, waste disposal companies



REDEFINE SECURITY



Data protection-compliant thermal solutions

How do you monitor sensitive areas without violating privacy?

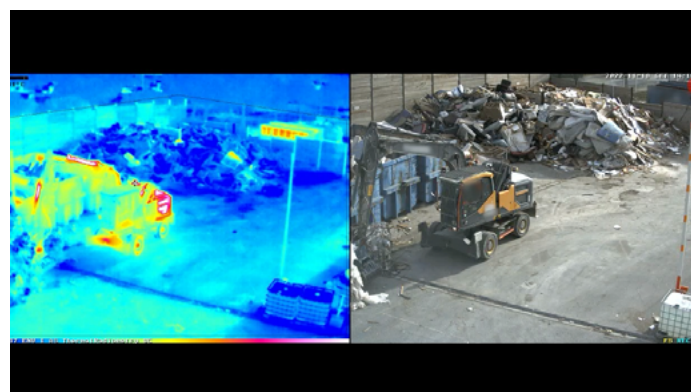
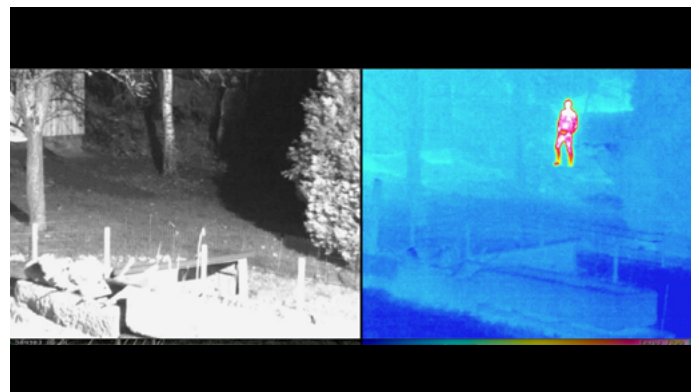
Thermal cameras make exactly that possible.

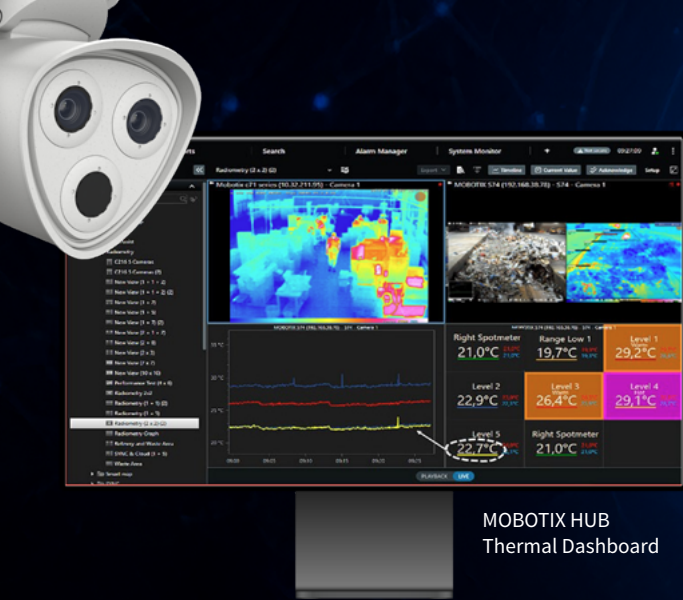
They detect fire hazards, movements and temperature changes – without recording faces or personal features. MOBOTIX thermal solutions are certified and do not require additional servers or complex storage solutions.

Scenario 1 – Perimeter protection for increased security requirements: Without violating personal rights, a MOBOTIX thermal camera also detects a night-time “visitor” who is practically invisible thanks to dark clothing and switched-off lighting and who is tampering with a fence or a locked gate. No face, no name – but a reliable alarm before he can enter the premises.

Scenario 2 – Waste storage with fire risk: Thanks to permanent monitoring of the waste storage facilities, the system also reports critical temperature rises in outdoor areas at an early stage – even before smoke develops or flames are visible. No personal injury, no environmental hazard.

Perfect for: Care facilities, waste management, data centers.





MOBOTIX HUB
Thermal Dashboard



Hybrid solutions – existing cameras meet MOBOTIX

Many companies are faced with a challenge: how can existing camera infrastructures be integrated into modern systems?

MOBOTIX HUB is the perfect video management solution.

Old devices remain in place, new MOBOTIX systems are added – controlled via a central platform.

Scenario 1 – Public administration with old stock: Some of the cameras come from a previous system. Thanks to MOBOTIX HUB, the inventory can continue to be used while new MOBOTIX cameras are seamlessly integrated. Including AI extensions and GDPR-compliant archiving.

Scenario 2 – Hospital with island network: One building is already equipped with MOBOTIX, another is not yet. Instead of rewiring everything, both areas are connected via the HUB platform. Centrally controllable, individually scalable.

Ideal for: Administrations, hospitals, mixed infrastructures, budget-sensitive modernizations



Tip:

You can find even more application examples – from healthcare to Industry 4.0 - at www.mobotix.com.

MOBOTIX
BeyondHumanVision

MOBOTIX – The Complete Solution Portfolio

Smart security starts with a strong foundation.

What use is the best camera if it doesn't fit into the system? What good is the cleverest software if it is not intuitive to use? And what good is the best planning if there is no support later on?

MOBOTIX delivers everything from a single source – but with the openness to fit into any environment.

From robust hardware to scalable software and personal service: this complete offering is no coincidence, but the result of years of experience, technical excellence and genuine partnership.

Camera systems – equipped for every challenge

MOBOTIX cameras are not mass products – they are specialists for a wide range of requirements. Whether extreme weather conditions, areas at risk of vandalism or highly sensitive indoor areas: There is a suitable solution for every scenario.

- **M series (e.g. M ONE, M73):** Modular, powerful, durable – our flagship for demanding applications
- **Fixed dome cameras:** Compact, vandal-proof and with high image quality
- **PTZ speed domes:** Dynamic all-round view with LiDAR and IR function
- **Hemispheric:** 360° all-round view with just one camera – ideal for rooms with many viewing angles
- **Multidirectional & bullet cameras:** For detailed outdoor surveillance
- **Thermal cameras:** For early fire detection and GDPR-compliant detection without identifiable images

The MOBOTIX concept works

MOBOTIX video systems are extremely robust and practically maintenance-free products. Only high-quality components are used, such as fiberglass-reinforced housings with concealed cable routing, high-end processors and image sensors, and industry-standard memory cards installed as standard. And firmware that focuses on practical functionality, cyber security and user-friendliness. Our solutions are designed for long-term benefits and minimal maintenance and update costs (ROI).

MOBOTIX ONE – The platform for growth, security and intelligence

With MOBOTIX ONE, MOBOTIX defines the next generation of intelligent video systems.

This new platform brings modern architecture, high computing power, seamless integration and AI analysis capability directly into the camera. The result: more efficiency, more intelligence, more future proof.

What makes MOBOTIX ONE so special:

- **Integrated intelligence:** AI functions such as the ActivitySensor ONE are included as standard – including high-precision object classification (person/vehicle) and direction recognition
- **Future-proof platform strategy:** Modularly expandable, update-proof and compatible with MOBOTIX HUB, CLOUD and Certified Apps
- **Maximum efficiency:** No server required – analysis and processing take place directly in the camera (“edge computing”)
- **Cybersecure by default:** Based on the Cactus Concept, MOBOTIX ONE is fully integrated into the MOBOTIX cybersecurity strategy
- **Scalability:** Ideal for small projects as well as international rollouts – without system discontinuity

The MOBOTIX ONE platform combines AI, edge computing, cybersecurity and seamless integration in a single system – meeting the exact requirements of modern security environments. Wherever smart analysis, data protection and future viability are required.



MOBOTIX
Video Systems



MOBOTIX M ONE



MOBOTIX M73



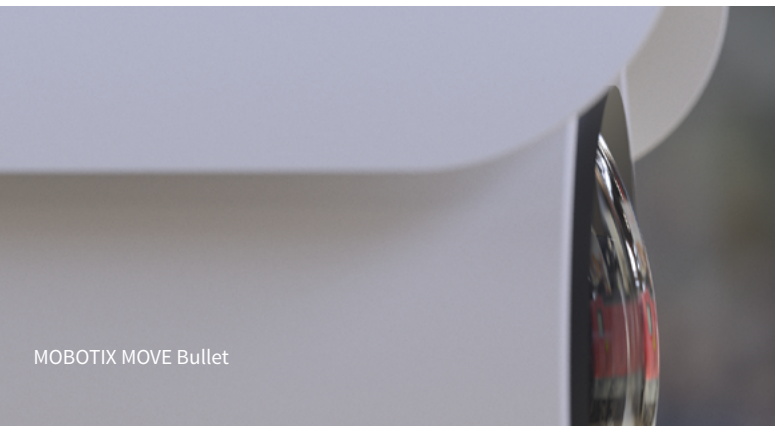
MOBOTIX Q71



MOBOTIX D71



MOBOTIX MOVE SpeedDome



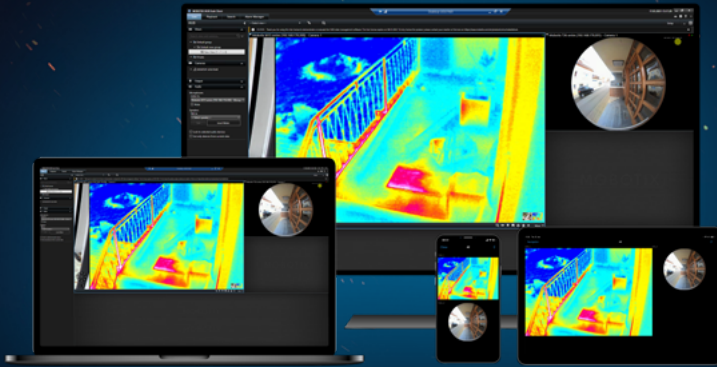
MOBOTIX MOVE Bullet

MOBOTIX
BeyondHumanVision

REDEFINE SECURITY



MOBOTIX
HUB VMS



Software & VMS – flexible, open, future-proof

The MOBOTIX software solutions are the brains behind the camera – powerful, intuitive and modularly expandable.

Whether on site, in the cloud or in a hybrid setup: They control, analyze, document and integrate – and turn video data into real added value.

MOBOTIX HUB – The central video platform for today and tomorrow

MOBOTIX HUB is more than just a VMS – it is the heart of modern security architectures.

From small installations to complex, international networks: The open platform enables end-to-end video management – reliable, scalable and secure.

- **Full integration of third-party hardware** – maximum compatibility, no isolated solutions
- **GDPR-compliant & audit-capable** – for the highest data protection requirements
- **Hybrid deployment options** – local, remote or in the cloud

Exclusively for MOBOTIX HUB users:

Numerous plug-ins are available **free of charge** via www.mobotix.com/plugins – from alarm management and device synchronization to system diagnostics.

These tools have been **specially developed by MOBOTIX** to expand the platform's range of functions – without any additional costs or subscription models.

This makes MOBOTIX HUB a powerful, central hub for intelligent video analytics, access management, IoT integration and more – including the ability to efficiently transfer existing systems with cameras from other manufacturers into a standardized, future-proof platform at management level.

MOBOTIX HUB – Cyber security that creates trust

Security ex works – equipped for every scenario

MOBOTIX HUB is designed for maximum cyber security – whether in critical infrastructures, industry or healthcare. Our platform offers comprehensive protection against external and internal threats:

- *HTTPS encryption of all communication* – from camera access to the user interface
- *Password and certificate protection* for video recordings and exported evidence
- *Digital signatures* to prove the authenticity of video material
- *Multi-level user rights & roles* – enforced at server level
- *Secure remote access* via dedicated mobile server – protected by bidirectional HTTPS encryption

Architecture with a security advantage – By strictly separating the camera and management network, MOBOTIX HUB minimizes attack surfaces. No direct routing path, no unnecessary weak points – but a plus in resilience.



MOBOTIX
Certified Apps

Certified Apps – intelligence directly in the camera

MOBOTIX Certified Apps turn cameras into specialists.

Whether license plate recognition, object tracking or thermal analysis – the apps run directly on the camera and offer industry-specific solutions with maximum efficiency.

Typical areas of application::

- **License plate recognition (LPR) & video-based character recognition and analysis OCR** (e.g. for access control, logistics, container management)
- **Personal anonymization** for GDPR-compliant monitoring of public spaces
- **Thermal validation** for early fire detection – fast, precise, certified
- **Barcode, object & symbol** recognition for industry, retail & critical infrastructures

Particularly user-friendly:

Every Certified App can be **tested free of charge for 30 days** – without restrictions.

Only then is a one-off license required. No subscription, no follow-up costs – **all updates and extensions are included for life.**

The apps can be expanded and updated at any time via a free firmware update – **without additional hardware or servers.** Updates can be made simply by upgrading the firmware – no additional devices required.

What does OCR actually mean – and why is it relevant?

***OCR stands for Optical Character Recognition**, i.e. automatic, video image-based text and character recognition, even on fast-moving objects. In the security world, this means in concrete terms:*

Cameras can capture, analyze and digitally process license plates, container IDs, barcodes or other characters.

This is particularly valuable in logistics, at access points, for parking space control or in industrial environments – because it allows processes to be automated, entrances and exits to be monitored and movements to be logged. Quickly, reliably and without manual intervention.

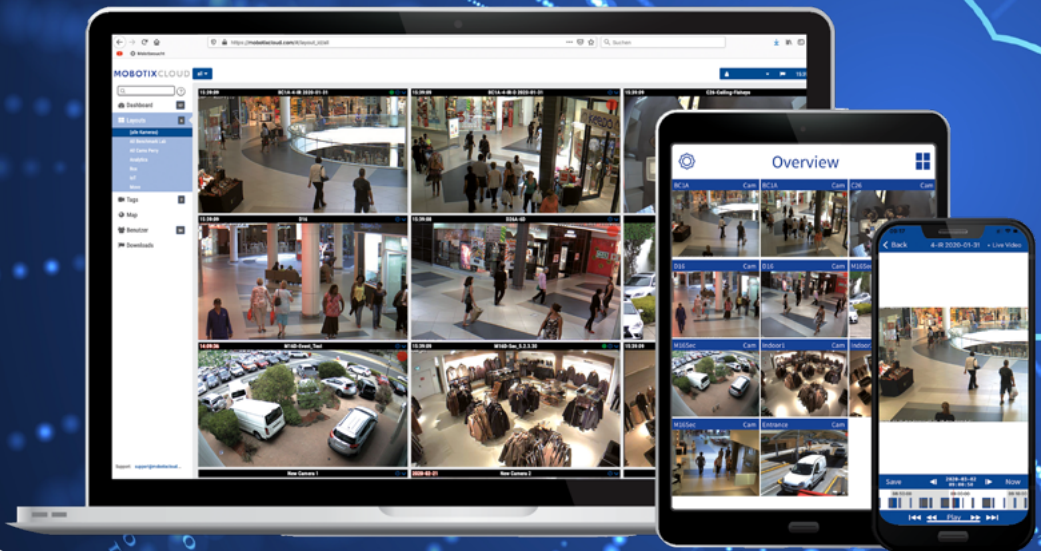
MOBOTIX relies on the highest quality here – through close cooperation with its technology partner VAXTOR.

VAXTOR is an internationally recognized specialist for high-precision OCR and LPR (License Plate Recognition) technologies – and has been part of the MOBOTIX family since 2023.

*This means: **Maximum integration, short distances and continuous further development** – available directly in our cameras, certified and proven.*

MOBOTIX
BeyondHumanVision

REDEFINE SECURITY





MOBOTIX CLOUD – Security that grows with you

The future of video security is networked, flexible and hosted. The **MOBOTIX CLOUD** is our answer to the increasing demands for scalability, cyber security and location-independent availability.

Whether single camera or complex multi-site installation – our cloud solution covers all application scenarios:

Getting started made easy with Direct To Cloud Recording (DTC):

For compact installations with MOBOTIX MOVE cameras – simple, efficient, ready to go. Without additional hardware.

Scalable with a system:

- **Cloud Bridge for all MOBOTIX cameras:** Seamless integration of existing MOBOTIX systems via bridge technology – GDPR-compliant and secure.
- **Distributed Cloud Architecture (many locations):** For large, multi-site projects with demanding data protection and performance requirements.

Certified security & data sovereignty:

- Data centers in defined regions – including **ISO/IEC 27001 certification** (EEN infrastructure)
- 24/7 availability, encrypted communication, role-based access controls
- **“Secure by design”** and continuous further development

MxManagementCenter – local, proven, free of charge

For many customers, a compact, local solution is still the preferred choice – especially with existing MOBOTIX IoT cameras.

The **MxManagementCenter (MxMC)** offers a free, easy-to-install platform for live view, recording, event control and alarming.

- **Proprietär Proprietary optimized for MOBOTIX IoT cameras**
- **Ideal for closed networks without cloud connection**
- **No server required – runs directly on client PCs**





MOBOTIX
Services



Services – for projects that work

Technology is only as good as its application. This is why MOBOTIX accompanies its partners and customers through all phases of a project:

- **Partner network worldwide** – trained, certified, reliable
- **Planning & configuration** – individual, targeted
- **Installation & commissioning** – clean, efficient, standard-compliant
- **Maintenance & support** – personal, solution-oriented

When things get technical, our partners and industry experts are on hand to help – be it with network design, app integration, troubleshooting or performance analysis.

Become part of our partner network

Are you looking to unlock new business opportunities with cutting-edge video and security technology? Then join MOBOTIX as a partner! Our global partner program is designed for system integrators, installers, and resellers who want to offer their customers intelligent, cyber-secure, and reliable solutions.

Your benefits:

- *Exclusive access to training, certifications, and technical resources*
- *Direct support from our Professional Services Team*
- *Attractive margins and project support*
- *Marketing materials, lead generation, and many other advantages*

Become a MOBOTIX Partner today:

www.mobotix.com/en/partner-program

MOBOTIX Campus

[Training, courses and certifications](#) – online or on site. Also for special topics such as **IEC 62676-4**.

Conclusion

Whether a complete solution or targeted integration – MOBOTIX stands for systematic security.

Modular, open, durable – and always one step ahead.

MOBOTIX
BeyondHumanVision

Final Word

Shaping the Future of Security – Together.

The world is changing - and with it the requirements for security.

Bigger, more expensive, more complex? Not necessarily better. Today's challenges call for solutions that think ahead, adapt and create trust – both technologically and in terms of people.

We wanted to show you with this eBook:

- Why it's time to redefine your security approach
- What legal, technological and strategic changes companies are facing
- And how MOBOTIX helps to fulfill these requirements in a **smart, sustainable and reliable way**

MOBOTIX stands for a new, more intelligent type of video security

From digital image sensors and certified video analysis to standard-compliant system planning: **MOBOTIX brings together everything** that makes up modern security solutions – in a platform that is built for the future.

MOBOTIX is different – 9 facts that show why

1. More than just cameras – we are solution providers.

MOBOTIX not only supplies high-quality standard video security systems, but also customized solution packages with intelligent cameras, clever software and open interfaces - perfect for industry, healthcare, energy, logistics and more.

2. Decentralized intelligence: The brain is in the camera.

Every MOBOTIX camera can think and act independently – no server required. This saves bandwidth, reduces storage requirements and increases reliability. Sounds smart? It is.

3. Cybersecurity? With us as standard.

With the Cactus Concept and regular penetration tests by independent experts (e.g. SySS), MOBOTIX sets standards in IT security. Our cameras are more of a digital watchdog than an easy target.

4. Innovation is our everyday life.

Whether MOBOTIX ONE, ActivitySensor or NurseAssist - our innovations are not created on paper, but in response to real customer needs.

5. Cameras that are (almost) indestructible.

IP67, IK10, seawater resistant, MTBF of over 9 years. Our hardware is also made for extreme conditions – from scorching sun to tropical humidity to icy night watches.

6. Data protection? No ifs and buts.

At MOBOTIX, video surveillance and GDPR are not a contradiction in terms. Local processing, minimal data transmission and maximum transparency – this is what smart and legally compliant security looks like.

7. Open platform – not a closed society.

MOBOTIX apps, partner solutions and open integration protocols (e.g. ONVIF) make our systems extremely flexible. Today VAXTOR OCR, NurseAssist powered by Kepler and certified early fire detection, tomorrow...? We build in what our customers need.

8. Successful globally, committed locally.

Whether Singapore, the USA or Spain – we think globally, but often act like a family business: personally, reliably, in partnership. Customers say it feels good to work with us.

9. Because we don't just sell technology, we sell trust.

Our goal is not a quick deal, but sustainable cooperation. Many of our partners have been with us for decades – because quality, reliability and genuine cooperation count.

Your next step?

Whether it's your first project or a complex rollout – we are ready to redefine security together with you:

- Talk to us: **+49 (0) 6302 9816-103**
- Visit www.mobotix.com
- Start your next project with a qualified and certified **MOBOTIX Partner in your area.**



Contact us:
sales@mobotix.com

MOBOTIX
BeyondHumanVision

