

# MOBOTIX NEWS – July 2025

## New Products and Updates

**WHAT'S  
NEW!**

- MOBOTIX IOT News
- MOBOTIX MOVE News
- MOBOTIX VMS News

# Contents

---

1. **MOBOTIX Software Updates (Overview) and Webinar**
2. **MOBOTIX IOT News (Mx6, MOBOTIX 7, MOBOTIX ONE)**
  - 2.1 Firmware Updates IOT
  - 2.2 New SySS Certifications
  - 2.3 Radiometry+ VGA 95°x76° Thermal Sensor Module for the M73
  - 2.4 Product Discontinuation: p26 and D16
3. **MOBOTIX MOVE News**
  - 3.1 Firmware Updates MOVE
  - 3.2 New Accessories
  - 3.3 MOBOTIX MOVE Connect App
4. **MOBOTIX VMS News**
  - 4.1 MOBOTIX HUB Updates
  - 4.2 MOBOTIX Plug-Ins for HUB and Milestone XProtect
  - 4.3 MxManagementCenter Updates
  - 4.4 MOBOTIX SYNC Plug-Ins
5. **MOBOTIX Links**



**Notice:** This document is intended exclusively for informational and planning and must not be distributed or published in this form, either digitally or in print. • Sale and delivery to commercial customers only. • All prices are net, exclusive of VAT, and ex works Langmeil, Germany (EXW). • All information is subject to change without prior notice. • MOBOTIX AG accepts no liability for technical inaccuracies, typographical errors, or omissions. • © 2025 MOBOTIX AG. All rights reserved. • MOBOTIX is a registered trademark of MOBOTIX AG in the European Union, the United States, and other jurisdictions. The indicated MSRP prices are non-binding recommendations for net prices ex works Germany. In certain countries, MOBOTIX partners may be required to apply higher end-user prices due to local import duties, taxes, or regulatory requirements.

1.

# MOBOTIX Software Updates (Overview) and Webinar

# 1. MOBOTIX Software Updates (Overview)

## Current updates

### 2025

- July 18: [MX System Release 7.3.6.48](#), [MX Certified Apps Release 2025-07-10](#)
- July 16: [MOBOTIX HUB Release 2025 R1 \(update\)](#), [MOBOTIX HUB security patches 2025-07-18](#)
- **June 27:** [MxMOVE Release mb20250613BX](#), [MxMOVE Release mb20250619UX](#), [MxMOVE Release mb20250624SX](#), [MxMOVE Release mb20250624YX](#), [MxMOVE Release mb20250625NX](#)
- June 25: [MX System Release 8.0.1.42-r4](#)
- June 20: [MOBOTIX HUB Plug-Ins 2025-06-20](#)
- June 03: [MxManagementCenter Release 2.9.2.2](#)
- May 23: [MOBOTIX HUB 2025 R1](#), [MOBOTIX HUB DriverInstaller 137b](#), [MOBOTIX HUB Security Patches 2025-05-23](#)
- May 09: [MxManagementCenter Release 2.9.2](#)
- May 07: [MxMOVE NVR CMS Release mb20250424CMS](#)
- April 17: [MOBOTIX HUB Driver 2025-04-17](#)
- April 09: [MX Certified Apps Release 2025-03-26](#)
- April 01: [MOBOTIX HUB Plug-Ins 2025-04-01](#)

**\* Hotfix software update for all MOBOTIX MOVE camera models except Turret and Multisensor Combo:**

Due to changes in current Windows versions and web browsers (Chrome, Edge, Firefox), H.264 video streaming was no longer displayed correctly in the browser. These updates fix the problem.

## Notice regarding MOBOTIX software updates

MOBOTIX systems also require regular software updates to remain secure, powerful and compatible in the long term. Don't wait too long – there are good reasons to install updates consistently:

### 1. Close security gaps

The most important reason for updating immediately is IT security. Only with up-to-date software can known vulnerabilities be reliably closed.

### 2. Use new features

Many updates bring helpful new features and technological improvements—especially in the areas of AI, analytics, and integration capabilities.

### 3. Optimize performance

Updates often improve the performance, stability, and user-friendliness of the system, regardless of security-related aspects.

### 4. Ensure compatibility

Only up-to-date systems guarantee smooth interaction with modern video management solutions and IT infrastructures.

**>> [Go to the MOBOTIX software download area](#)**

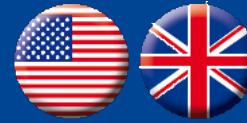
# 1. Invitation: Webinar on Product News July 2025

Take part in these MOBOTIX online events (in German and English) from anywhere with Internet access and be one of the first to experience our latest products and solutions live and exclusively in action!

We look forward to your participation and your questions.



ENGLISH



**August 21, 2025**

08:00 AM & 04:00 PM CEST

▶ [Register here](#)

**August 28, 2025**

8:00 a.m. & 4:00 p.m. CEST

▶ [Register here](#)

**September 4, 2025**

8:00 a.m. & 4:00 p.m. CEST

▶ [Register here](#)

**September 11, 2025**

8:00 a.m. & 4:00 p.m. CEST

▶ [Register here](#)

GERMAN



**August 21, 2025**

2:00 p.m. CEST

▶ [Register here](#)

**August 28, 2025**

2:00 p.m. CEST

▶ [Register here](#)

**September 4, 2025**

2:00 p.m. CEST

▶ [Register here](#)

**September 11, 2025**

2:00 p.m. CEST

▶ [Register here](#)

2.

# MOBOTIX IOT News (Mx6, MOBOTIX 7, MOBOTIX ONE)



## 2.1 Firmware Updates IOT

### New firmware and apps released for MOBOTIX ONE and MOBOTIX 7 cameras

We have continued to develop the firmware for our MOBOTIX IoT cameras over the past few months. The following releases deliver improved performance, enhanced app functionality and expanded hardware support:

#### [MX System Release 8.0.1.42-r4](#) (for MOBOTIX ONE)

This firmware version for MOBOTIX ONE cameras improves system stability and addresses specific customer feedback from practical projects.

#### [MX Certified Apps Release 2025-03-26](#) (for MOBOTIX ONE)

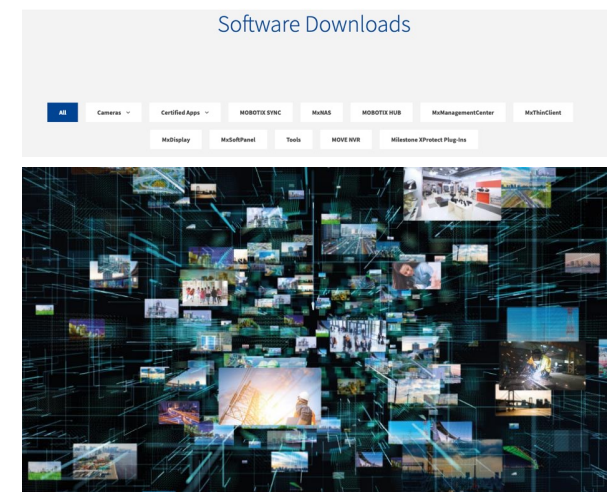
The app package for MOBOTIX ONE cameras (M1A-S series) brings targeted improvements to the MOBOTIX ActivitySensor ONE app (version 1.0.6), optimizing AI-based motion detection on the latest MOBOTIX platform. **Key new features:** Optimized presence detection for multiple objects (people and vehicles) • Improved visual display of motion direction arrows • Integration of the MxManagementCenter smart data interface • User interface now available in 11 languages (DE, EN, FR, IT, ES, PT-BR, RU, JA, and more)

#### [MX System Release 7.3.6.48](#) (for MOBOTIX 7)

This firmware update for the MOBOTIX 7 platform provides the necessary basis for using the new M73 Radiometry+ VGA 95° × 76° thermal sensor module (**see section 2.2**). The following new features have been integrated specifically for the Radiometry Sensor+ with thermal distance correction: Up to **30 frames per second** for smooth thermal video streams – even in combination with a second optical sensor • **Thermal distance correction** for significantly improved temperature measurement accuracy

#### [MX-Certified Apps Release 2025-07-10](#) (for MOBOTIX 7)

This app release for the MOBOTIX 7 camera models M73, S74, D71, p71, p71TA, v71, c71A, c71 NurseAssist contains internal improvements and support for the new Radiometry+ thermal sensor module through the Advanced Radiometry App. **Please note:** The Certified Apps from AI Tech, FFGroup and Visage Technologies are no longer included in this package, but apps from these manufacturers that are already installed will continue to function.



## 2.2 New SySS Certifications

### MOBOTIX proves cyber security expertise with three new SySS certifications

In spring 2025, MOBOTIX was once again certified by SySS GmbH, one of Germany's leading specialists in penetration testing. A total of three systems passed the rigorous IT security tests:

- **MOBOTIX ONE** – the new high-end camera platform
- **MOBOTIX 7** – successful recertification of the proven IoT platform
- **MOBOTIX c71 NurseAssist** – the first AI-based nursing camera system to be tested

The tests focused in particular on web interfaces, defense mechanisms, and potential points of attack. All three solutions impressed with a high level of security resilience—both in industrial environments and in sensitive areas such as nursing and healthcare.

With the latest test seals, MOBOTIX is further expanding its role as a cyber security pioneer – data protection compliant, independently certified, and made in Germany.

[->> To the official announcement on mobotix.com](https://www.mobotix.com)

*"Cyber security is an integral part of MOBOTIX's product promise. With the latest certifications, we are once again demonstrating that our products – from robust all-round cameras to highly specialized, AI-based system solutions – also set standards in IT security."*

Christian Cabirol  
Chief Technical Officer  
MOBOTIX AG





## 2.3 Radiometry+ VGA 95°x76° Thermal Sensor Module for the M73

### More vision, more precision, more FPS – the new Radiometry+ thermal sensor module for the M73

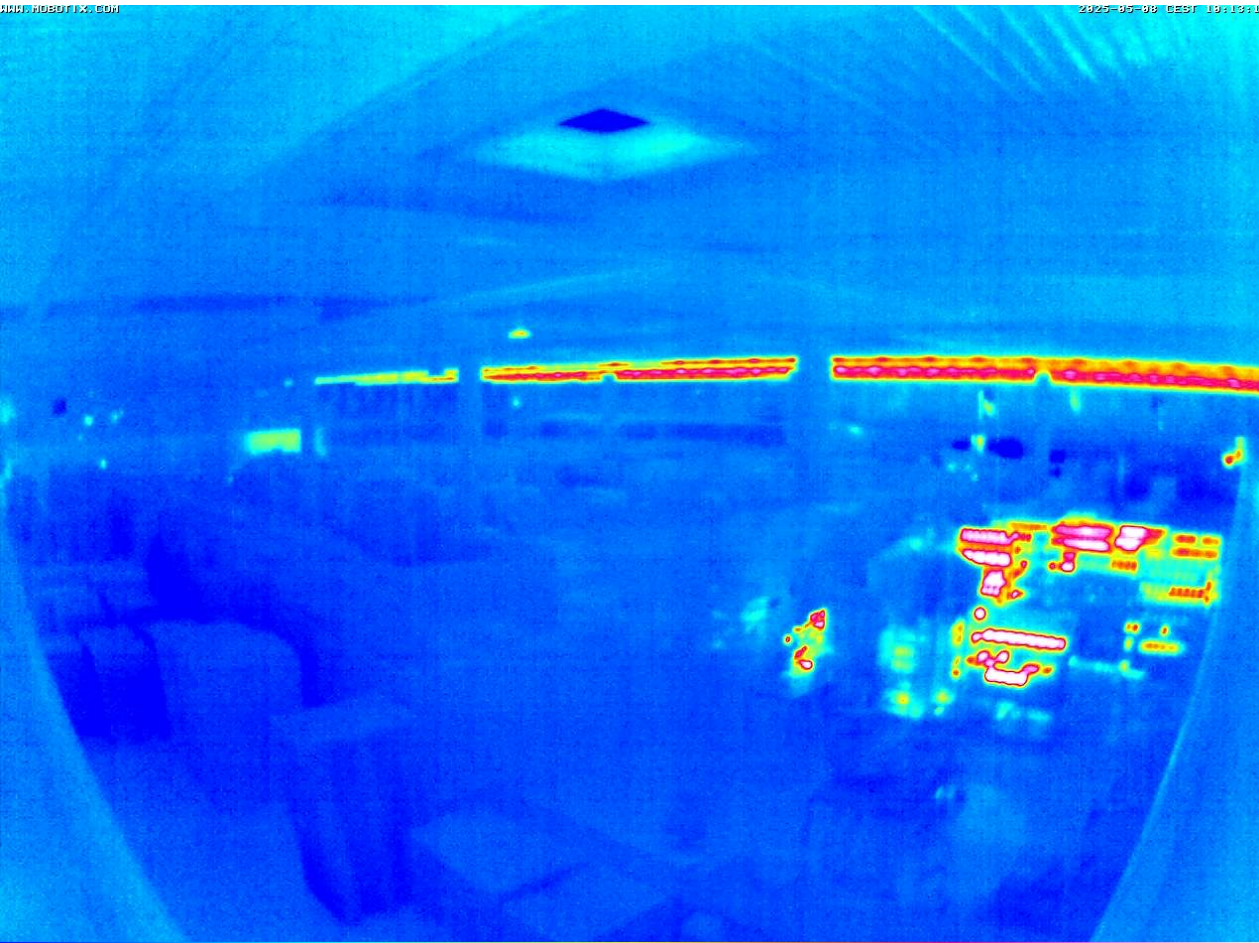
MOBOTIX is taking thermal imaging to the next level with the new 95°x76° Radiometry sensor module. The sensor module was developed specifically for the M73 platform and offers an exceptionally wide field of view, **a frame rate** of up to **30 fps** (instead of the previous 9 fps) and precise temperature measurements in real time. The **new Mx-O-M73TC-640R050 module** replaces the previously available **Mx-O-M73TB-640R050** thermal module and now offers even more performance at the same price!



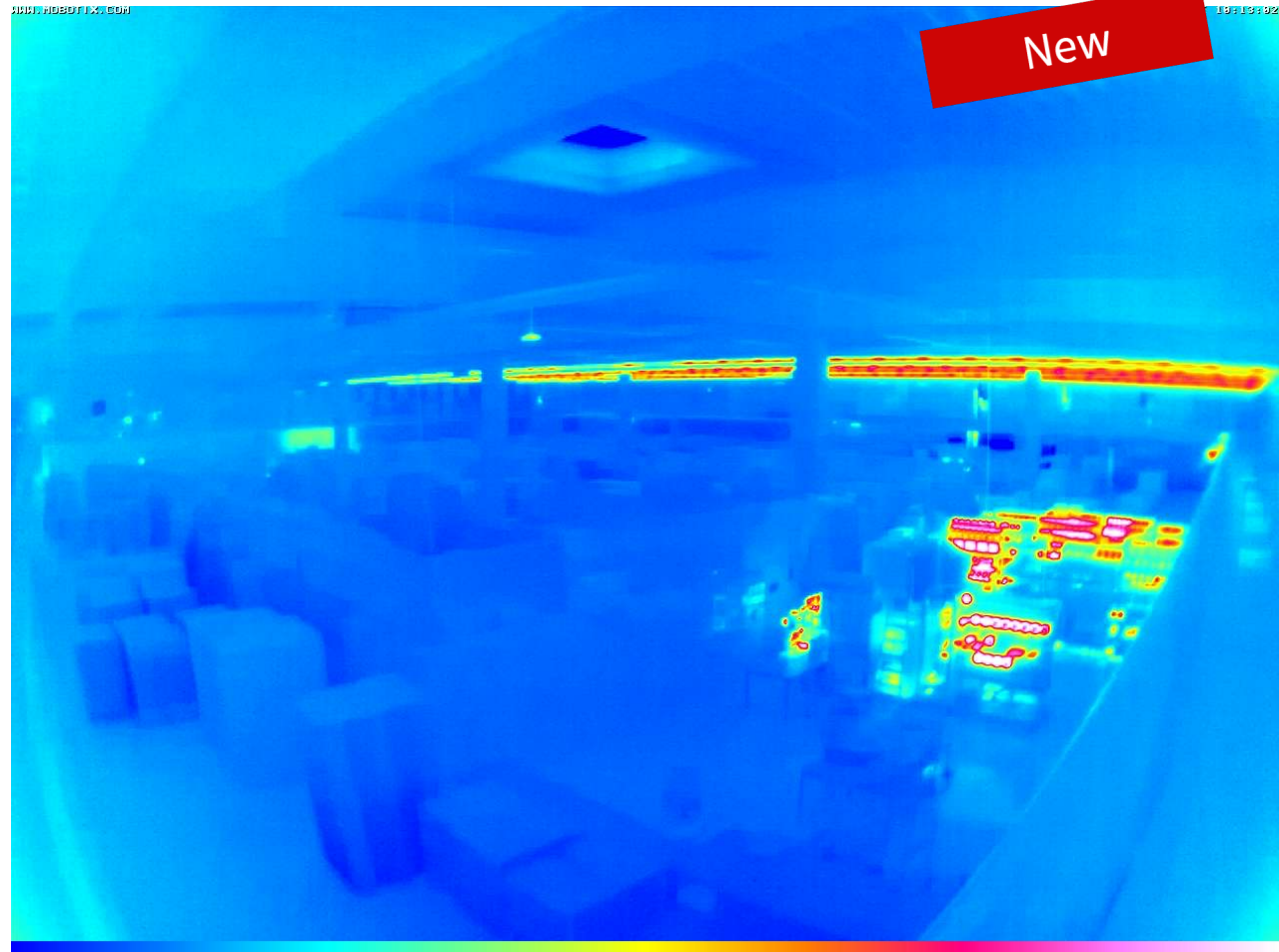
Criterion	Previous module (Mx-O-M73TB-640R050)	New module (Mx-O-M73TC-640R050)
Image angle (horizontal x vertical)	90° x 69°	95° x 76°
Frame rate	Up to 9 fps	Up to 30 fps
Thermal radiometry	Yes	Yes
Thermal distance compensation	No	Yes
Compatible platform	M73	M73
Overlay with optical sensor	Yes	Yes
Thermal sensitivity	50 mK	30 mK
Thermal measuring range (high/low)	-40 to 170°C / -40 to 550°C (-40 to 338 °F / -40 to 1022 °F)	-40 to 150°C / -40 to 350°C (-40 to 302 °F / -40 to 662 °F)
Pixel pitch	17 µm	12 µm
Certification	EN54, CNPP, RIPC1	EN54 planned (end of 2025)
Supported Certified Apps (available from factory)	<a href="#">Advanced Radiometry</a> , <a href="#">Thermal Heat (CNPP)</a> , <a href="#">Thermal Validation</a>	<a href="#">Advanced Radiometry</a> , <a href="#">Thermal Validation</a>

## 2.3 Radiometry+ VGA 95°x76° Thermal Sensor Module for the M73

Comparison of previous and new 90°/95° thermal sensor modules – improved image quality thanks to increased thermal sensitivity (30 mK instead of 50 mK)!



Previous module with 50 mK (Mx-O-M73TB-640R050)



New module with 30 mK (Mx-O-M73TB-640R050)

## 2.3 Radiometry+ VGA 95°x76° Thermal Sensor Module for the M73

A new firmware feature – **Thermal Distance Compensation** – automatically compensates for blurring caused by object distance, significantly improving temperature accuracy. The solution is ideal for security-critical applications for early fire detection in indoor and outdoor areas as well as for perimeter protection with increased data protection requirements (usually no recognition of persons in the thermal image). You can find our latest technical articles on **early fire detection with MOBOTIX thermal cameras** [here](#).

### Technical highlights at a glance:

- VGA radiometry thermal module with **95°x76° wide angle**, modular & retrofittable
- **Thermal distance compensation** for more precise temperature detection even from a distance
- Up to **20 freely configurable temperature measurement windows**
- Compatible with the **MOBOTIX Thermal Validation App** and **Advanced Radiometry App**
- **Up to 30 frames per second** for smooth live images, even in combination with an optical sensor (thermal overlay)

### Please note:

- The new thermal sensor can only be operated **with firmware release 7.3.6.48 or higher** for the MOBOTIX 7 platform (see section 2.1).
- The new Mx-O-M73TC-640R050 module **replaces** the previously available Mx-O-M73TB-640R050 thermal module **as a single module**. However, the [M73 thermal camera bundle](#) Mx-M73TA-B640R050-EN54-V2 for compliance with the EN54 standard remains available and can still be ordered.
- Due to the current demand situation, the **delivery time** for the new thermal sensor module is currently expected to be **8 to 10 weeks**.

Order information		
Model Order number	Description	MSRP price*
Thermal module 640 R050 with front plate for M73, 95° x 76° (C model) Mx-O-M73TC-640R050	VGA (640 x 480 pixels) • with thermal radiometry • 95° x 76° • incl. M73 replacement front panel • 30 fps	<a href="#">Contact your MOBOTIX partner</a>

\*MOBOTIX MSRP prices are recommended net sales prices Ex Works (EXW), ex works in Germany. In some countries, MOBOTIX distributors may have to charge higher local sales prices due to import regulations/customs duties.





# SEE MORE. SEE EARLIER. ACT NOW!

When it comes down to it, every second counts. Then you have the advantage when you see things that normally remain hidden. MOBOTIX thermal cameras give you exactly this edge. Integration into comprehensive solutions makes them even more efficient.



## 2.4 Product Discontinuation: p26

The p26 camera bodies with 6MP color sensor will only be available until **October 31, 2025**, or while supplies last. This means that the entire p26 product line has been discontinued. [MOBOTIX p71](#) or [MOVE Turret](#) cameras as replacements.

Product discontinuations as of October 31, 2025 (EoL)		
Model name, order number	Description	Product alternative
p26B Body 6MP, Day <a href="#">Mx-p26B-6D</a>	p26 camera module (body) with image sensor and lens mount • Lens can be ordered separately (B036 to B237, focal length 3.6 to 23.7 mm, f/1.8) • Manually adjustable lens tilt angle -5° to -45° • ONVIF-compliant Mx6 system platform (2nd generation) with H.264, MxPEG+ and M-JPEG • 6 megapixel moonlight sensor, color (day) • Max. image size: 6MP (3072 x 2048) • IP20, 0 to 40 °C • 4 GB microSD • Temperature sensor, brightness sensor, vibration sensor, MxActivitySensor, MxAnalytics • Ethernet patch cable 0.5 m/1.6 ft • Interfaces: Ethernet 10/100 (RJ45), MxBus (via Mx-A-IOA-IC), USB, slot for MxIOBoard-IC (Mx-A-IOA-IC) • Color: White	MOBOTIX p71, MOVE Turret
p26 Body 6MP, Day, Audio Package <a href="#">Mx-p26B-AU-6D</a>	p26 camera module (body) with 6 megapixel moonlight sensor, color (day) and lens holder • Lens can be ordered separately (B036 to B237, focal length 3.6 to 23.7 mm, f/1.8) • Manually adjustable lens tilt angle -5° to -45° • ONVIF-compliant Mx6 system platform (2nd generation) with H.264, MxPEG+ and M-JPEG • 6 megapixel moonlight sensor, color (day) • Max. image size: 6MP (3072 x 2048) • IP20, 0 to 40 °C • 4 GB microSD • HD audio with integrated microphone and speaker • Temperature sensor, brightness sensor, vibration sensor, MxActivitySensor, MxAnalytics • Ethernet patch cable 0.5 m/1.6 ft • Interfaces: Ethernet 10/100 (RJ45), MxBus (via Mx-A-IOA-IC), USB, slot for MxIOBoard-IC (Mx-A-IOA-IC) • Color: White	MOBOTIX p71, MOVE Turret



## 2.4 Product Discontinuation: D16

All 6MP sensor module variants for the [MOBOTIX D16](#) until **October 31, 2025**, or while stocks last. MOBOTIX recommends the [S74 multi-sensor camera](#) and [MOVE multi-sensor](#) as replacements.

Product discontinuations as of October 31, 2025 (EoL)	
Model name, order number	Description
D16B Body, for D16B/D15 sensor modules (day/night) <a href="#">Mx-D16B</a>	IP camera module for connecting one or two D16/D15 sensor modules or one D16/D15 sensor bridge FIX/PAN (can be ordered separately)
Sensor modules/bridges for D16:  1. <a href="#">Mx-O-SDA-S-6D036</a> 2. <a href="#">Mx-O-SDA-S-6D079</a> 3. <a href="#">Mx-O-SDA-S-6N036</a> 4. <a href="#">Mx-O-SDA-S-6N079</a>  5. <a href="#">Mx-O-SDA-F-6D6N</a> 6. <a href="#">Mx-O-SDA-P-6D6D</a> 7. <a href="#">Mx-O-SDA-P-6N6N</a>	  1. Sensor module D16 6MP, incl. B036 (103°, day) 2. Sensor module D16 6MP, incl. B079 (45°, day) 3. Sensor module D16 6MP, incl. B036 (103°, night) 4. Sensor module D16 6MP, incl. B079 (45°, night)  5. Sensor bridge FIX for D16, 2x 6MP (day & night) 6. Sensor bridge PAN/180° for D16, 2x 6MP (day) 7. Sensor bridge PAN-N/180° for D16, 2x 6MP (night)





3.

## MOBOTIX MOVE News

## 3.1 Firmware Updates MOVE

### Greater stability, better compatibility – latest firmware releases for MOBOTIX MOVE cameras

With the latest firmware versions released on June 27, 2025, MOBOTIX provides important updates for a wide range of MOVE camera models. In addition to general performance optimizations, the releases also **fix a streaming problem**:

#### **H.264 Hotfix**



*Due to changes in current Windows versions and modern browsers (Chrome, Edge, Firefox), certain MOVE cameras experienced display problems in the H.264 live stream. The new firmware versions released on June 27, 2025 reliably fix this bug. MOVE Turret and Multisensor combo models are not affected.*

### MOBOTIX MOVE cameras and NVR – Release Notes & Software Download:

Since June 27, 2025 (H.264 hotfix):

[MxMOVE Release mb20250613BX](#)

[MxMOVE Release mb20250619UX](#)

[MxMOVE Release mb20250624SX](#)

[MxMOVE Release mb20250624YX](#)

[MxMOVE Release mb20250625NX](#)

Since May 7, 2025 (MOVE NVR):

[MxMOVE NVR CMS Release mb20250424CMS](#)



## 3.1 MOVE Firmware Generation Change: Advance Notice

**Greater clarity, more functionality, greater future-proofing – a new generation of MOVE firmware with a new user interface is in the starting blocks.**

The rollout of a completely revised firmware generation for MOBOTIX MOVE cameras (UX, BX, YX) will begin in August 2025. The new firmware not only features a modernized user interface, but also profound structural improvements – both in terms of system design and ease of use.

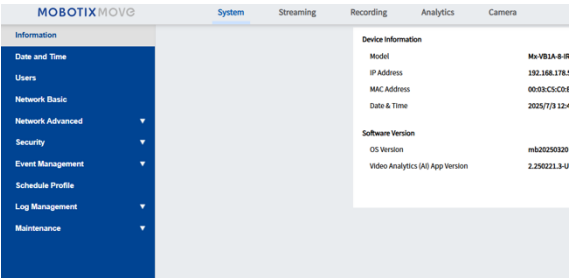
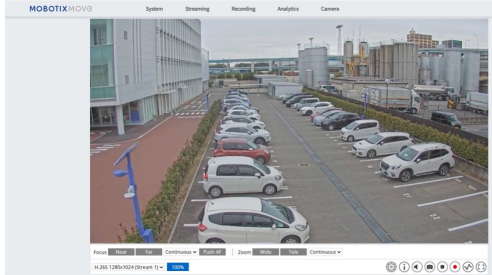
### Important new features at a glance:

- **Completely new web GUI:** modern design, clearer menu structure, new controls such as sliders and switches
- **Two-part firmware structure:** Separate updates for the operating system (OS) and analytics components – similar to the structure of MOBOTIX IoT cameras
- **Improved live view:** new info buttons with OSD overlay, convenient digital zoom including mini preview for position display
- **New "Recording" tab:** direct access to SD card content (videos, snapshots), including date/time filter
- **New "Analytics" tab:** clearly structured parameterization with groupings, heat map function, people gathering (crowd detection)
- **Heat map evaluation:** including colored OSD display, data export via SD card
- Integration of **MQTT messaging service** (basic functionality)

**Please note:** The current firmware will initially remain available in [the Download Center](#), as both new components (OS + APP) must be installed manually for the upgrade. The parameterization of existing systems will remain completely intact after the update, with the exception of the fourth detection window (now: 3 windows max.).

**Rollout planning:** The introduction will start with the UX, BX, and YX models, with other series (SX, NX) to follow gradually. The MOVE [Multisensor Combo](#) and [Turret](#) cameras are **not affected**. The new next-generation MOVE firmware versions are currently being prepared and will be released shortly.

# NEXT-GEN MOVE FIRMWARE



## COMING SOON

## 3.2 New Accessories

### New installation solution and protective components for special MOBOTIX MOVE cameras

MOBOTIX is expanding its MOVE accessory range with practical components that simplify installation and ensure long-term system functionality, especially indoors and in ALPR applications. These accessories are available to order now. They complement the MOVE portfolio and improve installation convenience and on-site maintainability.

- **Ceiling Mount Kit for [MOVE 12MP Vandal Hemispheric Camera](#):** For discreet and vandal-resistant integration of the Mx-VH1A-12-IR-VA in indoor environments. The ceiling mount frame allows for a clean installation with a flush finish – ideal for public areas such as entrances, lobbies, or cashier areas.
- **Replacement front glass kits for [MOVE ALPR Bullet 2MP cameras \(standard & distance versions\)](#):** Specially designed for MOVE ALPR camera models with EverClear coating, which protects against weather influences and ensures a clear view of the license plate. Depending on the ALPR camera model used, variants for standard or distance alignments are available.

Ordering information		
Model name Order number	Description	MSRP price*
Ceiling Mount Kit for MOBOTIX MOVE 12MP Vandal Hemispheric <a href="#">Mx-M-VH1A-IC</a>	Accessory bracket for elegant ceiling installation of MOBOTIX MOVE 12 MP Vandal Hemispheric camera Mx-VH1A-12-IR-VA	<a href="#">Contact your MOBOTIX partner</a>
Replacement front glass set EC for MOBOTIX MOVE ALPR camera VB1A-2-IR-ALPR-FGK-EC <a href="#">Mx-A-VB1A-2-IR-ALPR-FGK-EC</a>	Front glass kit EverClear for MOBOTIX MOVE Vandal Bullet 2MP ALPR Mx-VB1A-2-IR-ALPR (with standard lens)	
Replacement front glass set EC for MOBOTIX MOVE ALPR camera VB1A-2-IR-D-ALPR-FGK-EC <a href="#">Mx-A-VB1A-2-IR-D-ALPR-FGK-EC</a>	Front glass kit EverClear for MOBOTIX MOVE Vandal Bullet 2MP ALPR (with distance lens)	

\*MOBOTIX MSRP prices are recommended net sales prices ex works (EXW) from the factory in Germany. In some countries, MOBOTIX distributors may have to charge higher local sales prices due to import regulations/customs duties.



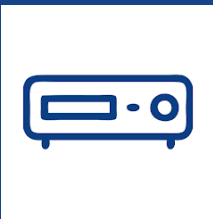
## 3.3 MOBOTIX MOVE Connect App

### New App – new Possibilities:

The new, free MOBOTIX MOVE Connect App replaces the previous MOVE NVR app and offers a completely redesigned user interface with significantly improved performance. The App is now available in app stores and should be installed by existing app users, as the previous MOVE NVR app will be removed from stores shortly.

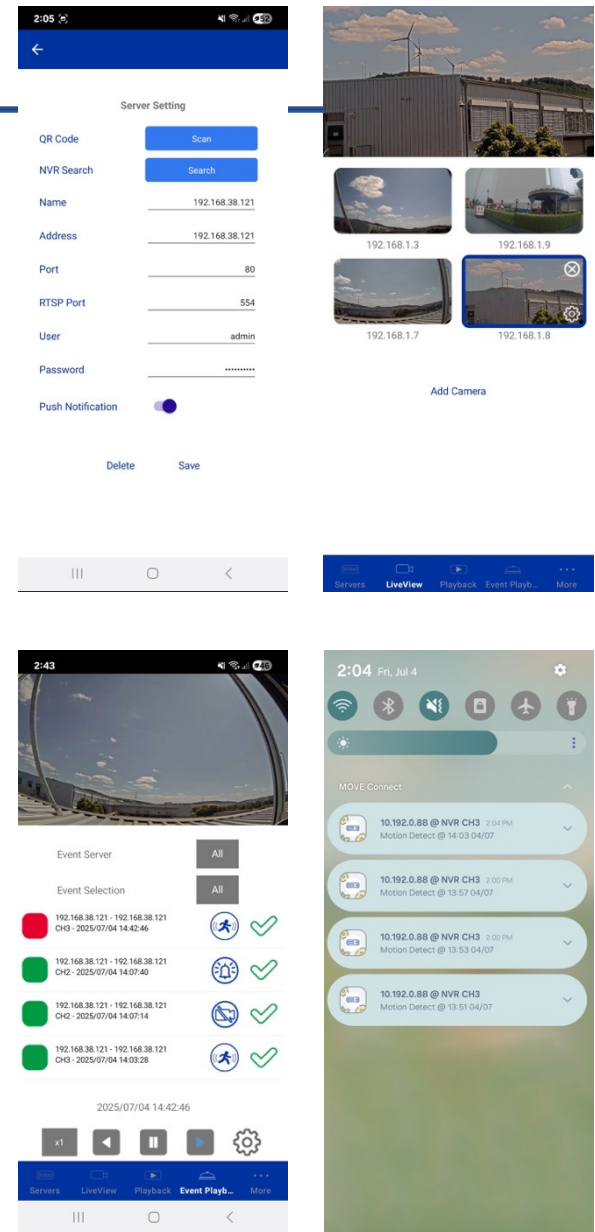
#### Important new features at a glance:

- **Modern App design:** The intuitive interface with optimized menu structure ensures faster access to all functions.
- **Reliable push notifications:** Events such as motion detections are now transmitted securely and directly from the NVR to the mobile device.
- **Smart server handling:** The App prevents duplicate entries with the same IP/name and actively reports incorrect server data – for greater clarity and ease of use.
- **Optimized playback function:** Improved stability, smoother display, and a new time slider feature ensure targeted event playback.
- **LiveView, playback & PTZ control:** You have full control over all connected MOBOTIX MOVE cameras – mobile and always at your fingertips.
- **Connection via Wi-Fi:** Communication takes place locally via a Wi-Fi network between the app, NVR and the connected cameras.



[Link to the App in the Google Play Store](#)

[Link to the App in the Apple App Store](#)



4.

## MOBOTIX VMS News



## 4.1 MOBOTIX HUB Updates

MOBOTIX regularly releases new HUB versions with optimizations, additional functions and security-related adjustments. The current **MOBOTIX HUB release 2025 R1 (update from July 16)** is not a new main version, but a functional update to release 2025 R1, which was already released in May 2025. This update is required to take full advantage of the new **MOBOTIX HUB Security Patches 2025-07-18**. **Important:** Existing installations of HUB 2025 R1 **do not** require **new licenses or a complete reconfiguration of the system**.

### Release notes and download of the latest MOBOTIX HUB software components (for HUB Release 2025 R1):

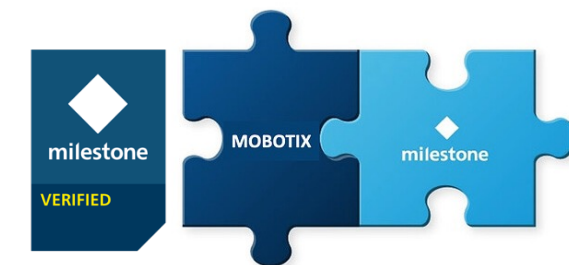
- [MOBOTIX HUB Release 2025 R1 – Update](#)
- [MOBOTIX HUB Plug-Ins 2025-06-20](#)
- [MOBOTIX HUB Driver 2025-04-17](#)
- [MOBOTIX HUB DriverInstaller 137b](#)
- [MOBOTIX HUB Security Patches 2025-07-18](#)

### MOBOTIX Plug-Ins for Milestone XProtect User (Milestone verified):

- [MOBOTIX HUB Plug-Ins 2024-11-29 for Milestone Xprotect](#)
- [Link to the Milestone Marketplace](#)

**MOBOTIX HUB online training courses** with a technical or sales focus can be booked here:

- [MOBOTIX HUB online training](#)



[Link: HUB News & Tips in the MOBOTIX Community](#)



## 4.2 MOBOTIX Plug-Ins for HUB and Milestone XProtect



### MOBOTIX HUB plug-ins for HUB L2-L5:

1. Thermal Dashboard Plug-In
2. SYNC Dashboard Plug-In
3. Forensic Search Plug-In
4. CLOUD Integration Plug-In
5. Camera Configuration IoT & MOVE Plug-In
6. NurseAssist Dashboard Plug-In



### MOBOTIX HUB plug-ins for HUB L3-L5:

7. Imaging Pro Plug-In
8. DualVision Plug-In
9. Fisheye Plug-In
10. Discovery Plug-In
11. Softbuttons Plug-In



### KEY FEATURES:

- The complete Plug-In package is **available free of charge** for MOBOTIX HUB customers (HUB L2 or L3 and higher).
- The HUB Plug-Ins are also available to **Milestone XProtect** customers for **a fee** and as **a free 30-day demo**.
- [More information about HUB Plug-Ins: Click here >](#)
- [More information about Milestone XProtect Plug-Ins: Click here >](#)



## 4.3 MxManagementCenter Updates

With the new version **MxManagementCenter (MxMC) 2.9.2.2**, MOBOTIX presents a functional and stability update to the main version 2.9.2. The free video management software has been specifically developed to better meet the growing demands of professional users.

### New features and improvements at a glance:

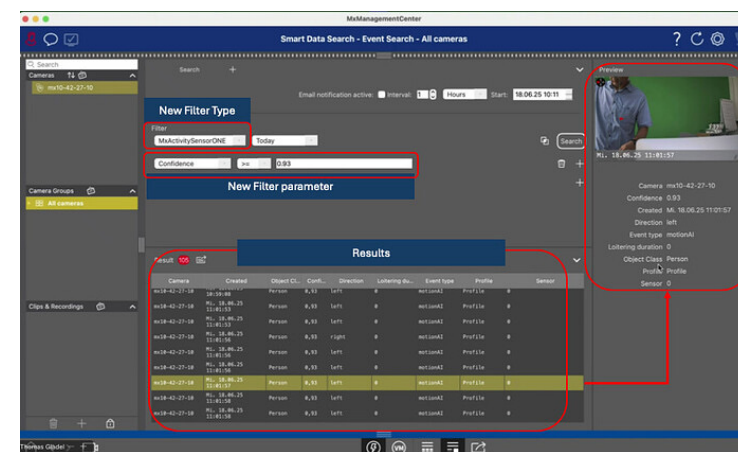
- **User-friendliness & usability**
  - Optimized navigation in the camera bar, including display of the number of selected cameras
  - Extended filter functions in the event window
  - Improved display in multi-view mode (multiple views)
  - New Online Help available in EN, DE, FR, ES, IT, and JP
- **New**
  - Support for the MOBOTIX ActivitySensor ONE app (from camera firmware 8.0.1.42)
  - Vario focus control for MOBOTIX ONE cameras directly in MxMC
  - New digital "zoom only" mode in live view
  - Extended setting options for overlay elements (e.g., transparency, position)
- **Performance and system stability, bug fixes**
  - E.g., bug fixes in the Thermal Dashboard (when using a MOBOTIX M73 with firmware up to 7.3.5.35)

➤ **Direct link to download MxMC:** [MxManagementCenter Release 2.9.2.2](#)

➤ **Additional licenses and accessories:** Everything at a glance here in [the MOBOTIX Store](#).

➤ **MxMC or MOBOTIX HUB?** You can find a quick decision-making aid [here](#).

➤ **Community tip:** You can find more detailed information and application notes on MxMC in the [MOBOTIX Community](#).



MOBOTIX Community

## 4.4 MOBOTIX SYNC Plug-Ins

With the two plug-ins **MOBOTIX SYNC Traffic Yard Management** and **MOBOTIX SYNC Yard Management**, MOBOTIX is expanding the functionality of its established SYNC platform specifically for industrial and logistics applications. The plug-ins are available as license-based extensions and can be flexibly integrated into existing MOBOTIX SYNC servers.

### MOBOTIX SYNC Traffic Management Plug-In

This plug-in is particularly suitable for traffic or area monitoring. It analyzes vehicle behavior based on data from multiple entry/exit cameras:

- **Calculation of the average speed** of vehicles within defined zones
- **Determination of the dwell time** of a vehicle in a monitored area
- Ideal for optimizing traffic flows, security analyses and compliance with time limits

### MOBOTIX SYNC Yard Management Plug-In

This plug-in is ideal for applications such as factory premises, industrial sites or logistics centers with controlled access areas. It adds the following functions to the SYNC server:

- **Extended access control** with management of person categories and individual permissions
- **Anti-passback function** to prevent unauthorized access
- **Real-time presence reports** for people on the premises
- **Analysis of frequently used routes** and traceability of vehicle movements via a REST API

Both plug-ins are based on proven modules of MOBOTIX SYNC technology and are licensed directly from MOBOTIX. A trial license (90 days) is available on request.



## 4.4 MOBOTIX SYNC Plug-Ins

Function	SYNC Yard Management Plug-In	SYNC Traffic Management Plug-In
Target application	Logistics, industry, access control	Traffic monitoring, time control
Access control	✓	–
Presence overview (people/vehicles)	✓	–
Anti-passback function	✓	–
Dwell time	–	✓
Speed analysis	–	✓
REST API for external systems	✓	–
Camera-based (video systems with VAXTOR ALPR apps)	✓	✓

Ordering Information MOBOTIX SYNC Plug-Ins		
Model Order number	Description	MSRP price*
MOBOTIX SYNC Traffic Management Plug-In Mx-SYNC-P-TM	Extends the MOBOTIX SYNC Server functionality with the following features: • Average speed at which vehicles pass through a zone • Calculation of the dwell time of vehicles in a zone • Both calculated on the basis of recordings from entry/exit cameras	<a href="#">Contact your MOBOTIX partner</a>
MOBOTIX SYNC Yard Management Plug-In Mx-SYNC-P-YM	Extends the MOBOTIX SYNC Server functionality with the following features: • Extended access control functions • Records of person categories, persons and assigned permissions • Anti-passback • Real-time presence report • Analysis of frequently used routes and vehicle traceability (via REST API)	



\*MOBOTIX MSRP prices are recommended net sales prices Ex Works (EXW), ex works in Germany. In some countries, MOBOTIX distributors may have to charge higher local sales prices due to import regulations/customs duties.

5.

## MOBOTIX Links



# Welcome to the MOBOTIX Community!

---



## MOBOTIX Community



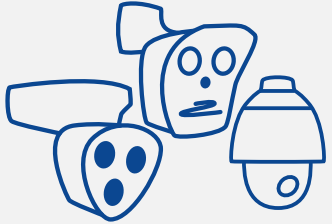
### **The MOBOTIX Community – Support available at any time**

Are you a MOBOTIX partner, customer, user or simply interested in our innovative, high-quality products such as our intelligent cameras "Made in Germany," MOBOTIX 7 camera apps with the latest AI technology or our modern VMS solutions such as MOBOTIX HUB or MOBOTIX CLOUD?

Visit our community platform now! Our technical support experts and experienced external users provide tips on setting up and using MOBOTIX solutions—and troubleshooting if necessary. In addition to a wealth of valuable technical information and tips, you can also exchange ideas with other members of the global MOBOTIX family in the user forum.

# Important Links for You

## Products



[Overview of the entire MOBOTIX product range...](#)

## Software



[Download software, firmware, apps, and driver packages...](#)

## Documentation



[Technical documentation, white papers, technical drawings and more...](#)

## Dates



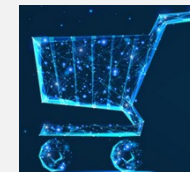
[Current dates: Webinars, training courses and events...](#)

## Price list (available to certified partners only)



[Price list in the MOBOTIX Partner Portal](#)

## MOBOTIX STORE (with camera configurator)



<https://www.mobotixstore.com>

---

#### Legal aspects of video and audio recording

When using MOBOTIX AG products, all data protection regulations for image and sound surveillance must be observed. Depending on national legislation and the installation location of the cameras, the recording of image and sound data may be subject to documentation or prohibited. All users of MOBOTIX products are therefore required to familiarize themselves with the applicable regulations and comply with them. MOBOTIX AG is not liable for any illegal use of its products.

BeyondHumanVision

MOBOTIX

MOBOTIX AG  
Kaiserstrasse  
67722 Langmeil  
Germany

+49 6302 9816-0  
info@mobotix.com  
www.mobotix.com

MOBOTIX, the MOBOTIX Logo, MxControlCenter, MxEasy, MxPEG, MxDisplay and MxActivitySensor are trademarks of MOBOTIX AG registered in the European Union, the U.S.A. and in other countries • Subject to change without notice • MOBOTIX do not assume any liability for technical or editorial errors or omissions contained herein • All rights reserved • © MOBOTIX AG