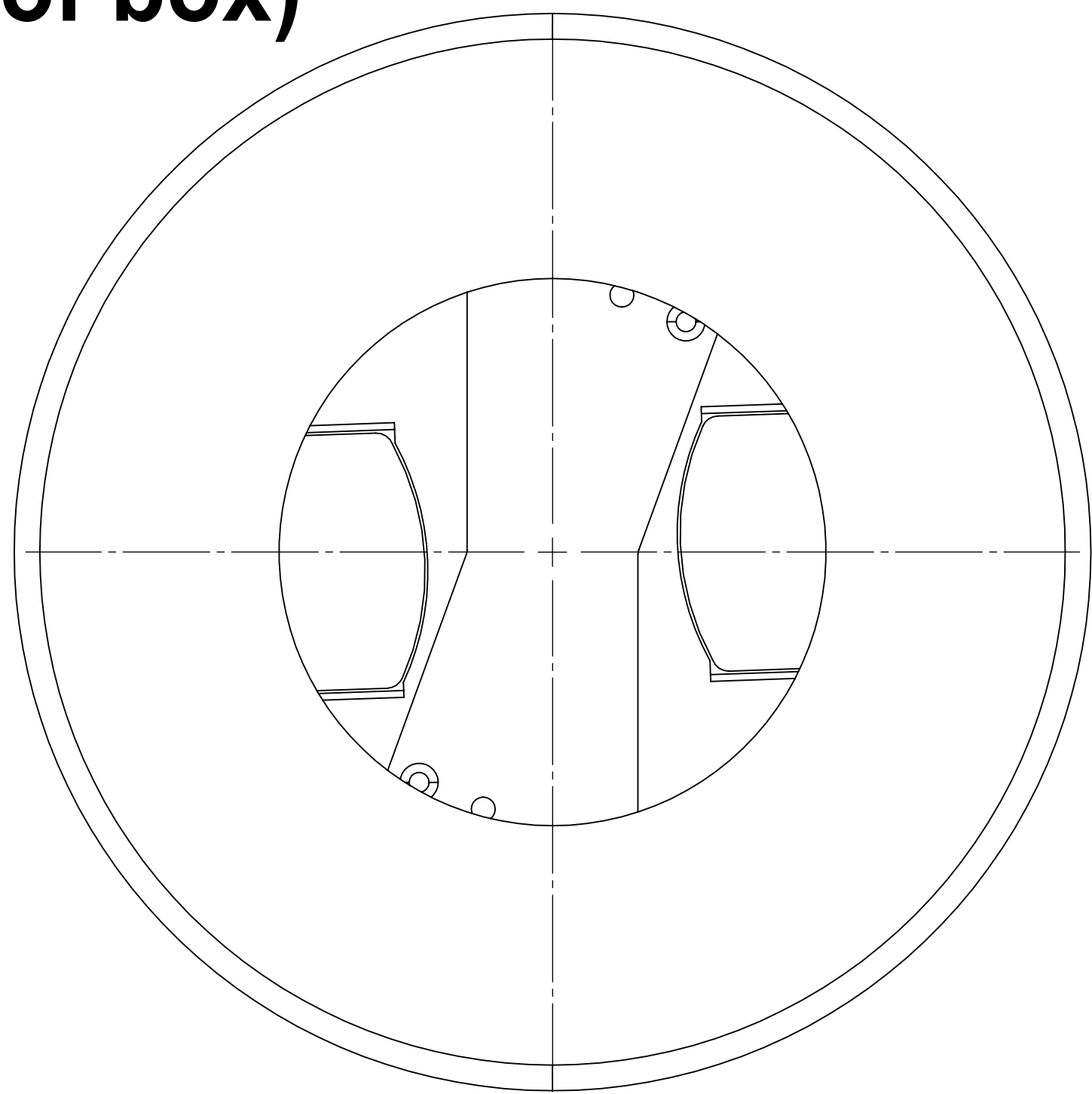
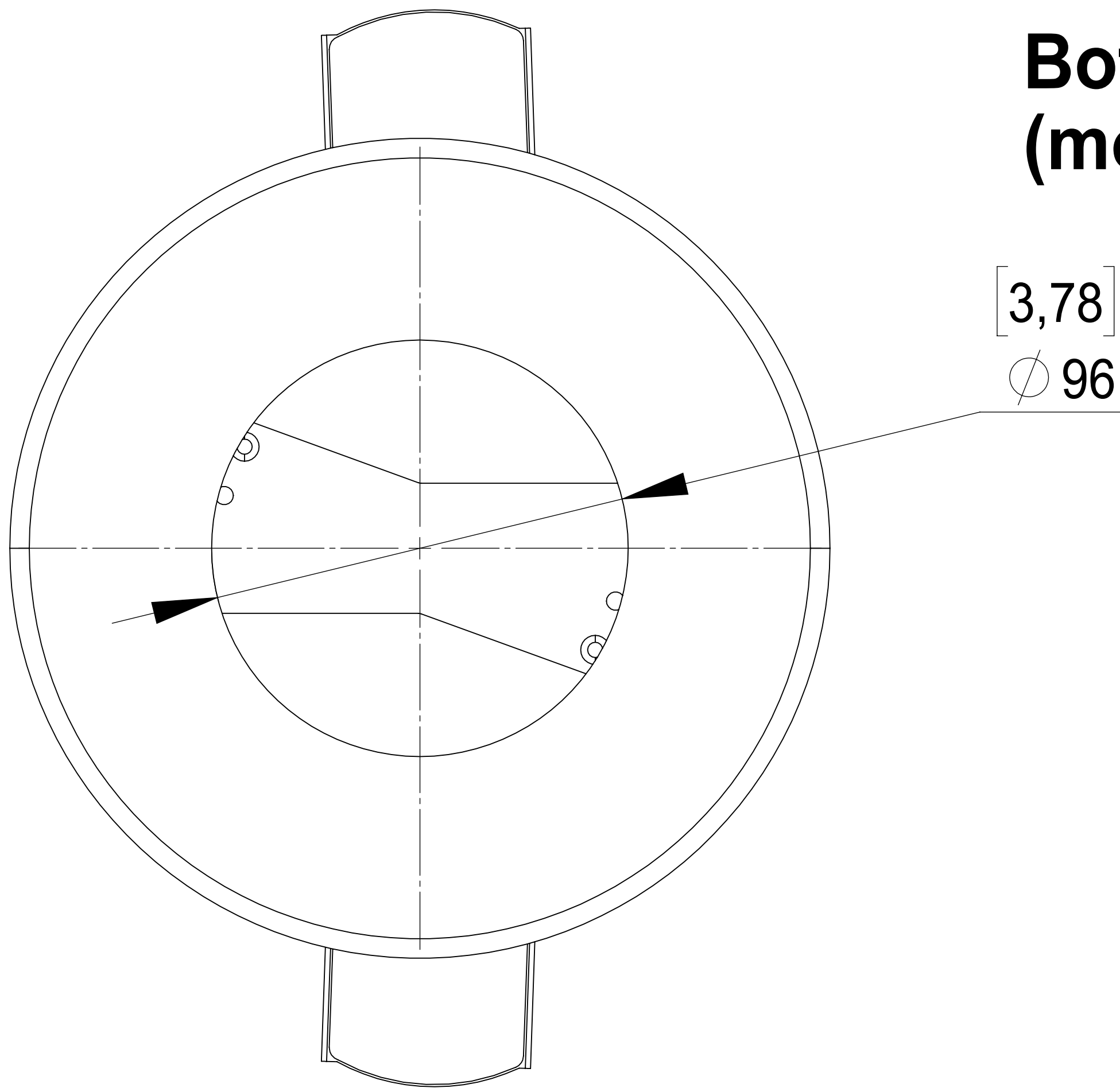


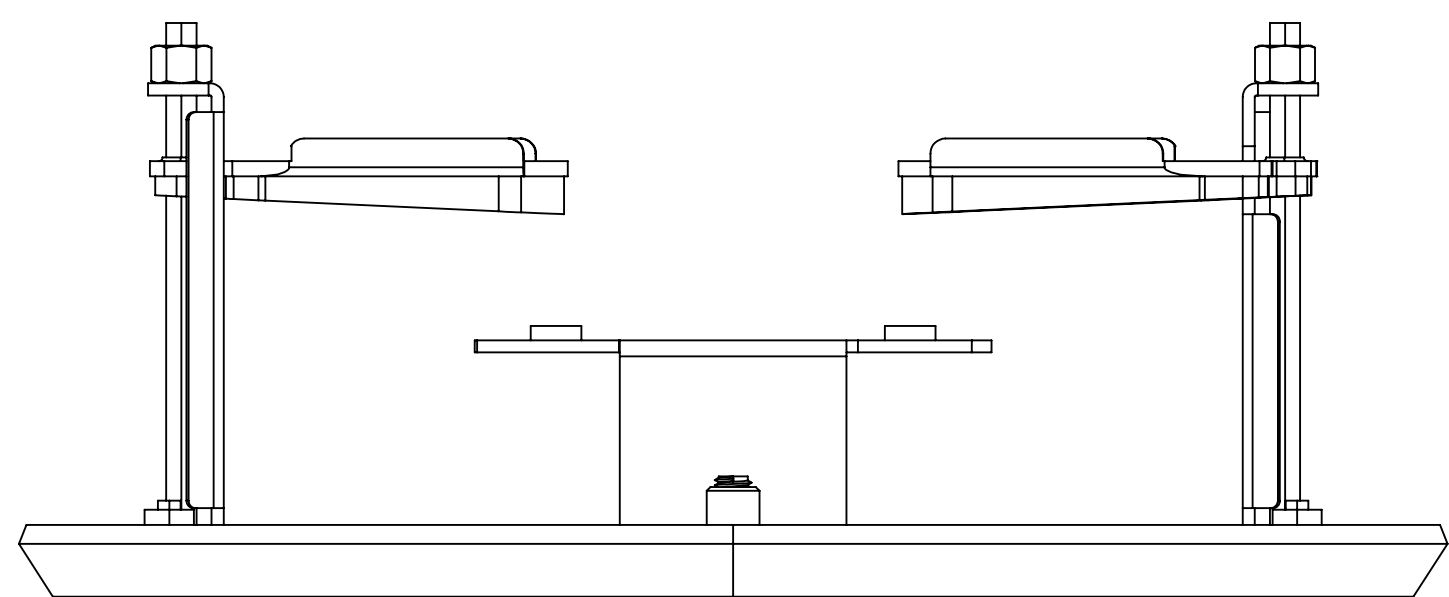
Bottom
(out of box)



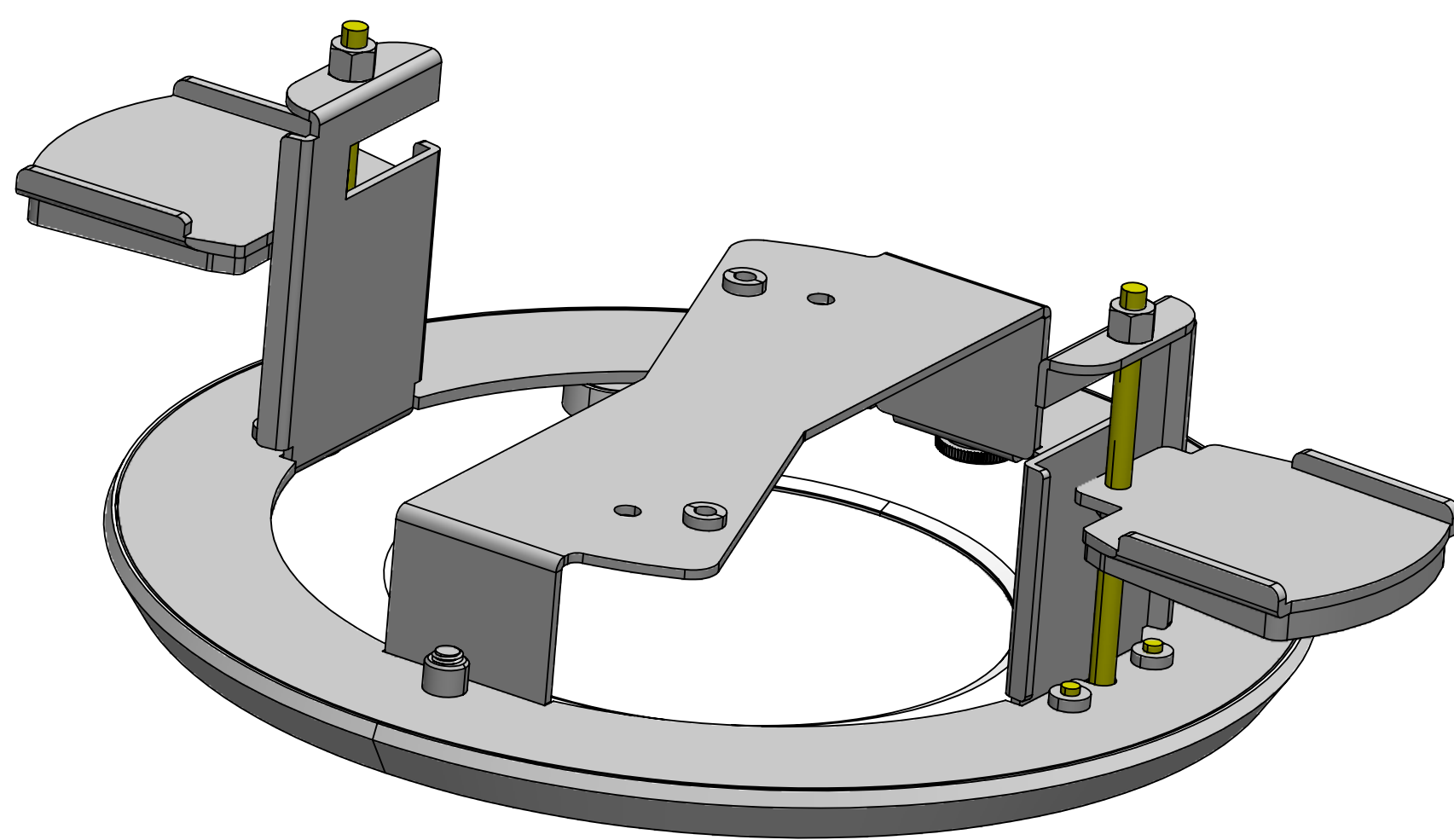
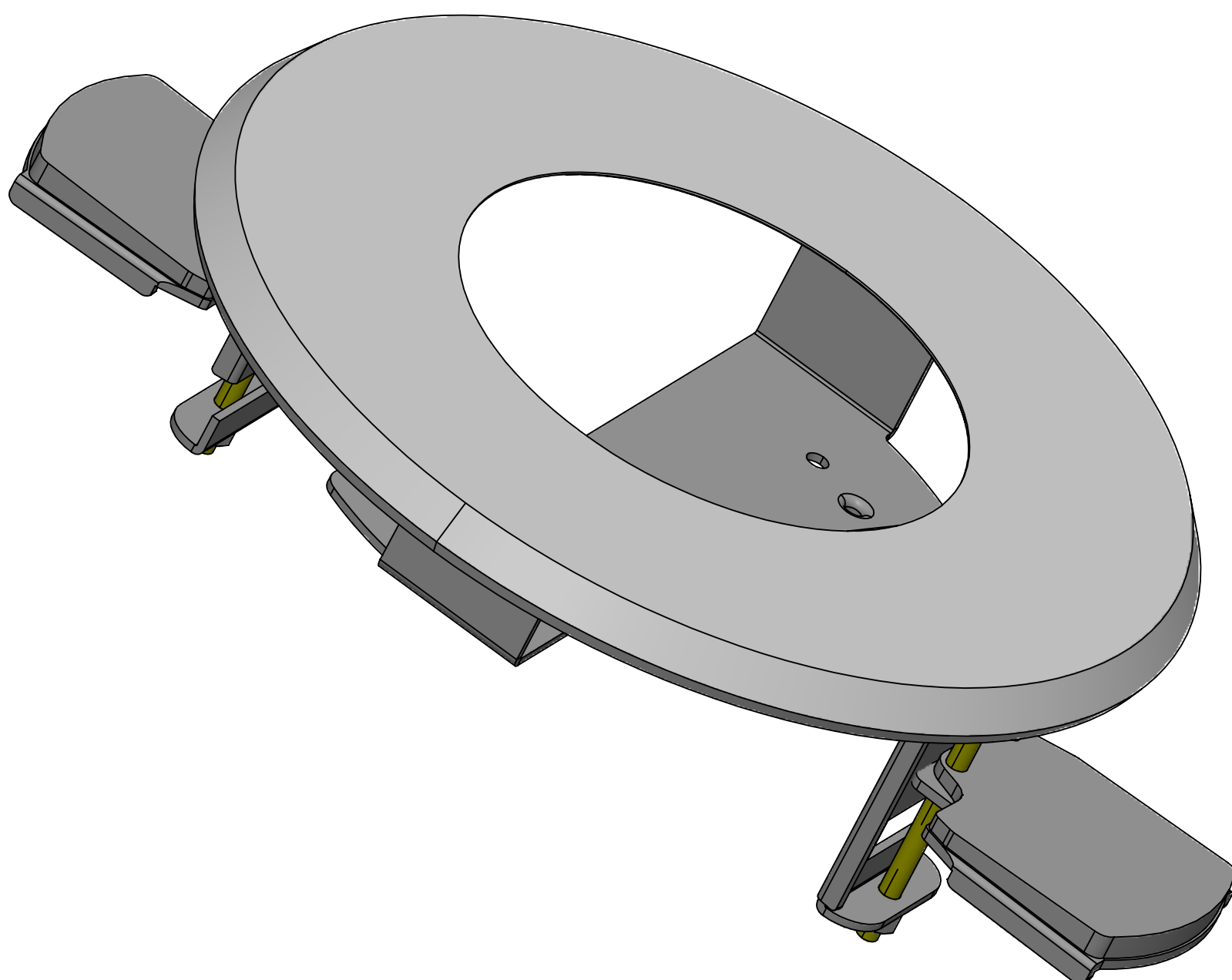
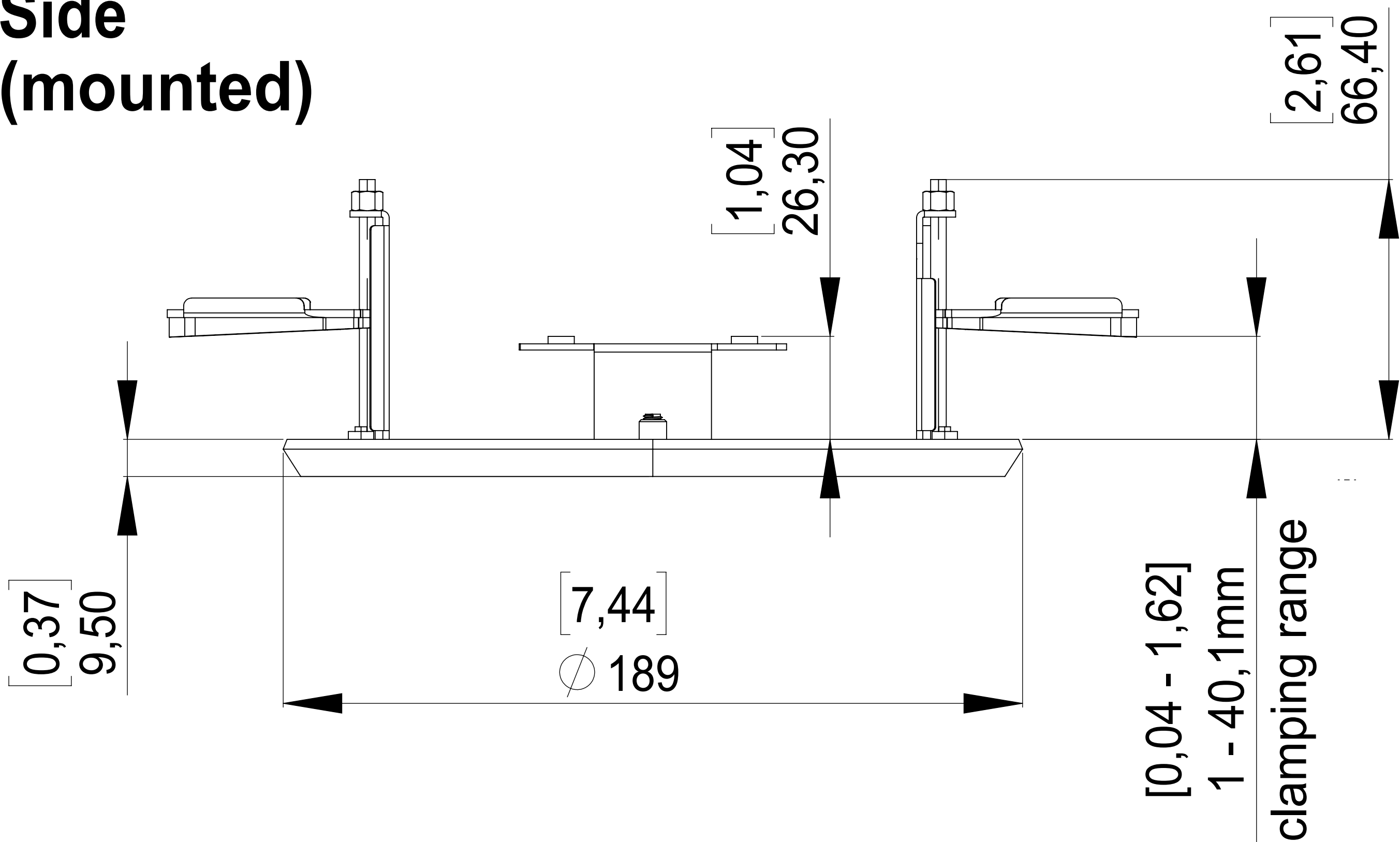
Bottom
(mounted)



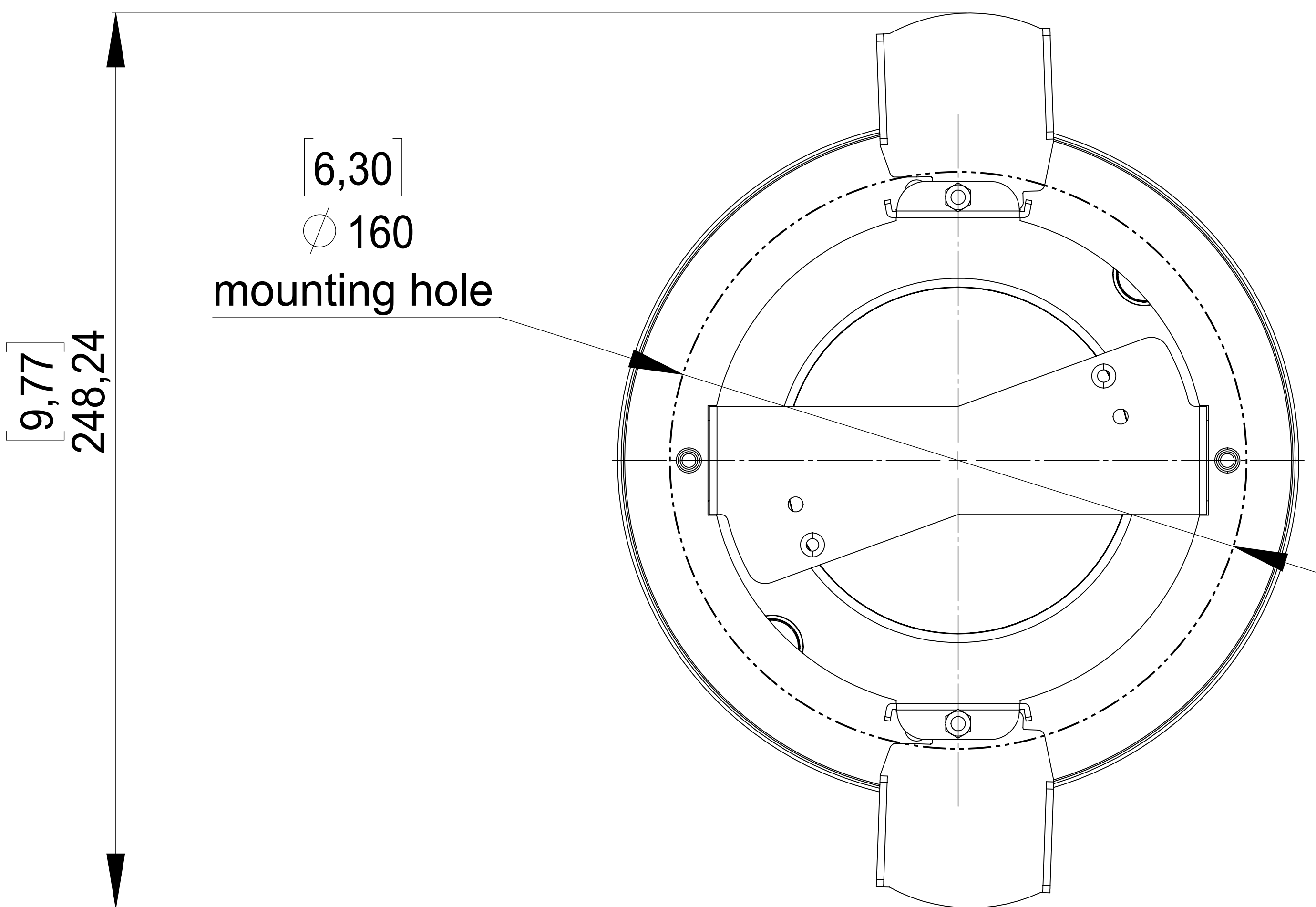
Side
(out of box)



Side
(mounted)



Top
(mounted)



MOBOTIX does not take responsibility for the correctness and completeness of this data and recommends to verify the design and measures with the actual product delivered. Measures on goods delivered may vary due to manufacturing tolerances and environmental temperature material impacts. Technical specifications of the enclosed data is subject to change without notice. As all Design information are subject to MOBOTIX IPR, the reproduction and distribution of this data as well as the communication of its contents is prohibited and offenders will be held liable.

The content of this document is confidential and may be subject to change without notice. It is not to be distributed outside the company. All rights reserved.		Process	Date	Name	Material	Weight
		Control	13.07.2025	ACZ	maximum deviation without tolerance data	State
		Drawn	CACAO	Subcontract	after REACH and RoHS - compliant (signature 2017/1831)	1:1
		Blatt1				
		20.104.282-01 Mx-M-VH1A-IC In-Ceiling Set f. 12MP VH				
		Replacement				Sheet 1 of 1