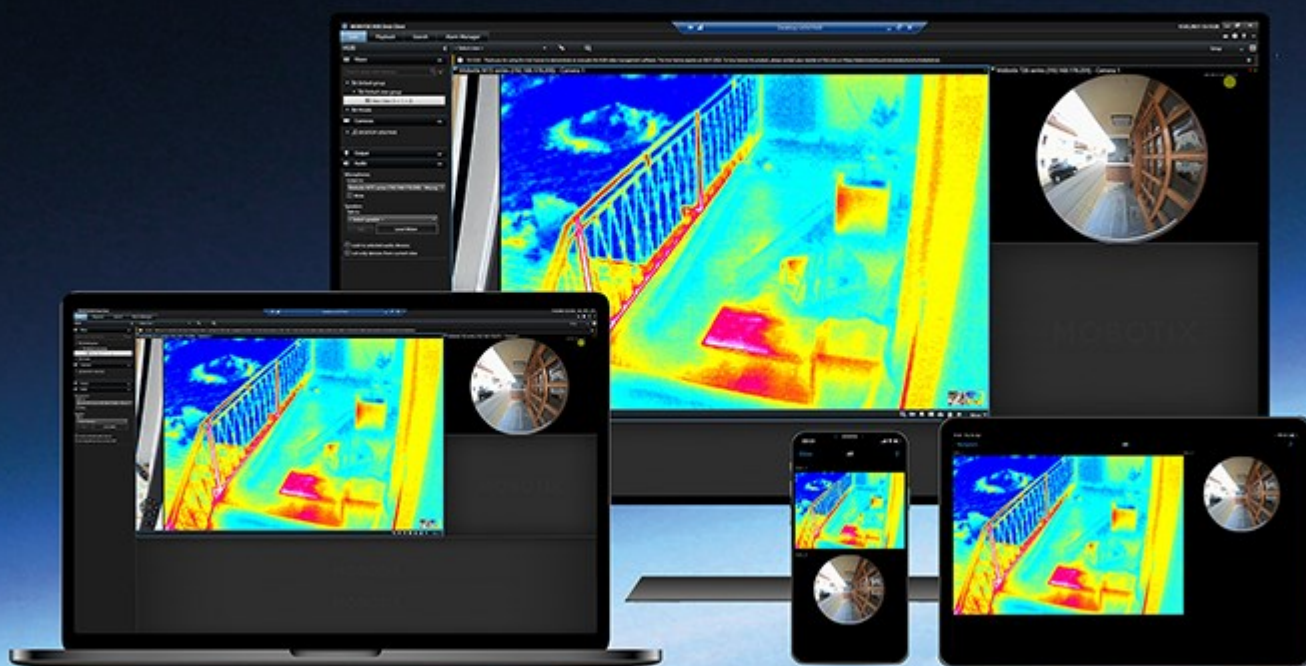


User manual

XProtect® LPR 2025 R3

© 2025 MOBOTIX AG



Contents

XProtect LPR for operators **XProtect LPR for operators on page 3**

What's new? **What's new? on page 4**

 In XProtect LPR 2025 R1 In XProtect LPR 2025 R1 on page 4

Adding LPR content to your views **Adding LPR content to your views on page 5**

 Add LPR cameras to views Add LPR cameras to views on page 5

 Adjust LPR view settings Adjust LPR view settings on page 5

 Enable LPR server status on maps Enable LPR server status on maps on page 5

 Enable LPR-specific elements Enable LPR-specific elements on page 6

Viewing LPR related content **Viewing LPR related content on page 8**

 LPR in live mode LPR in live mode on page 8

 LPR on the Search tab LPR on the Search tab on page 8

 The LPR tab The LPR tab on page 8

 LPR event list LPR event list on page 8

 License plate styles License plate styles on page 9

 Filtering LPR events Filtering LPR events on page 9

 Edit match lists Edit match lists on page 10

 Import or export match lists Import or export match lists on page 10

 Export LPR events as a report Export LPR events as a report on page 11

 LPR on the Alarm Manager tab LPR on the Alarm Manager tab on page 12

 View LPR recognitions View LPR recognitions on page 12

 Show or hide vehicle properties on the LPR tab Show or hide vehicle properties on the LPR tab on page 13

XProtect LPR for operators

XProtect LPR enables you to use video-based content analysis (VCA) and recognition of vehicle license plates that interacts with your surveillance system and your MOBOTIX HUB Desk Client.

To read the characters on a plate, XProtect LPR uses optical character recognition on images aided by specialized camera settings.

You can combine LPR (license plate recognition) with other surveillance features such as recording and event-based activation of outputs.

Examples of events in XProtect LPR:

- Activate recordings in a particular quality
- Trigger alarms
- Match against positive and negative match lists
- Open gates
- Switch on lights
- Automatically display incident footage on the screens of designated security staff
- Send text messages to mobile phones.

With an event, you can activate alarms in MOBOTIX HUB Desk Client.

What's new?

In XProtect LPR 2025 R1

Added vehicle properties to searches and in LPR match lists

MOBOTIX has added vehicle properties to XProtect LPR. Users of XProtect® LPR in MOBOTIX HUB Desk Client can refine their searches by specifying detailed vehicle properties, such as the make, model, and color of the vehicle.

Users can specify and adjust what vehicle properties they need in searches on the built-in **Search** tab in MOBOTIX HUB Desk Client or in match lists on the **LPR** tab.

For a full list of vehicle properties and their associated values, <https://www.mobotix.com/en/manuals>.

Adding LPR content to your views

Add LPR cameras to views

1. In **Setup** mode, select the view you want to add an LPR camera to.
2. In the **System overview** pane, click **LPR** and drag it to the relevant view item.
3. In the **Select LPR camera** dialog box, expand the required server to view a list of available LPR cameras from that server.


You can specify how you want to display LPR camera events in live mode in the **Properties** pane (see [Adjust LPR view settings on page 5](#)).

Adjust LPR view settings

1. In live mode, click **Setup**.
2. In **Properties**, next to **LPR camera**, click the **Browse** button to open the **Select LPR camera** dialog box and select another LPR camera.
3. Choose the order of LPR events in your lists on the right-hand side of the preview:
 - **Newest on top**: Display the newest LPR events at the top of the list
 - **Newest on bottom**: Display the newest LPR events at the bottom of the list
4. If you want to display the list of license plates from one camera but want to view video from another, select a different camera in the **Camera name** field.

Enable LPR server status on maps


It is possible to visualize LPR servers on maps and have their current status shown on the maps. To enable the LPR server status on maps:

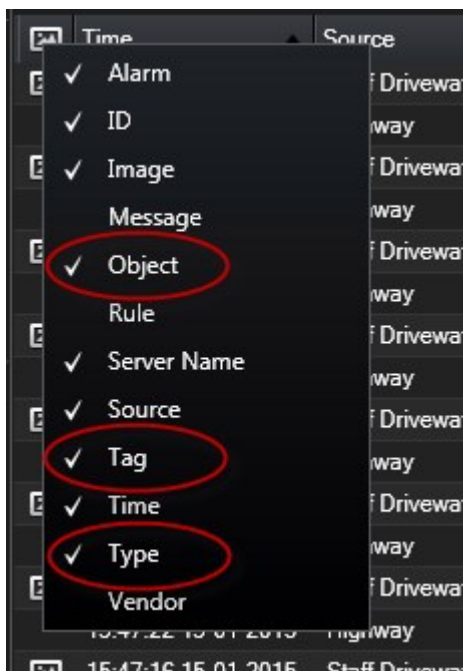
1. In live mode, click **Setup**.
2. In **Views**, select the relevant map.
3. Right-click the map and select **Toolbox**.
4. In the toolbox, click the  **Add plug-in element** icon to open the **Element selector** window.
5. Select the relevant LPR server and drag it onto the map.
6. On the map, right-click the LPR server icon and select **Status details** to get live status on the LPR server and the LPR cameras related to the server.

You can associate the LPR specific map with your **Alarm list** by adding the map on the **Alarm Manager** tab.

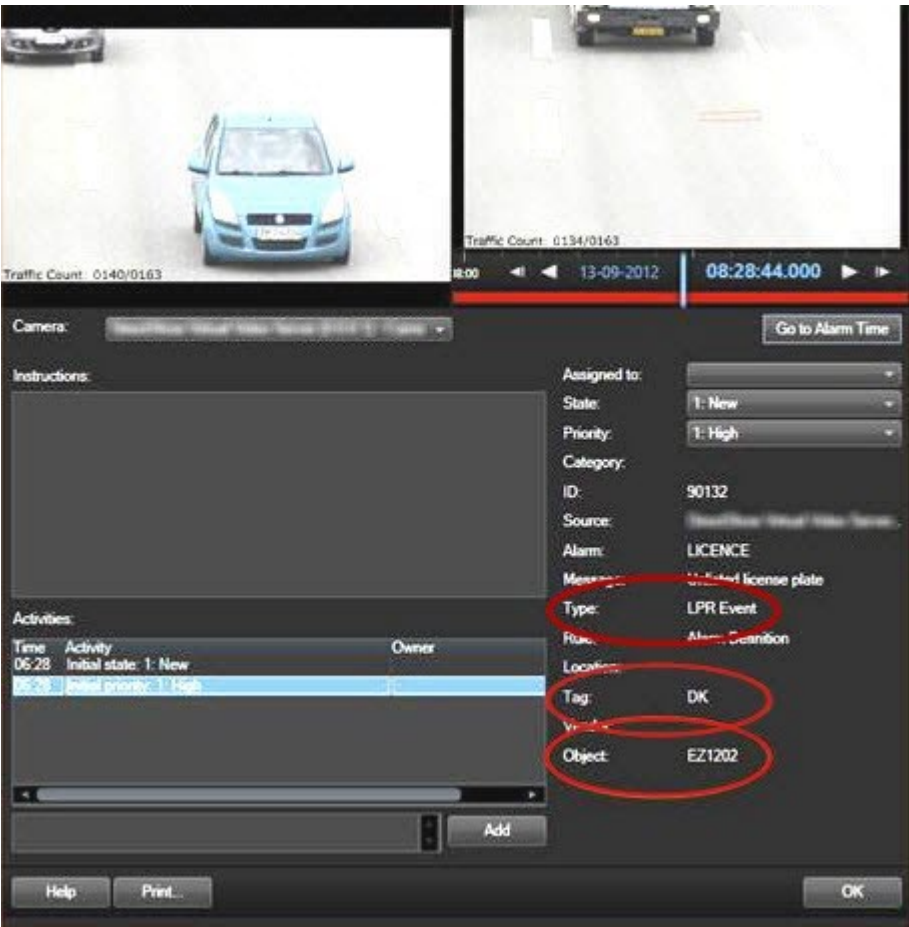
Enable LPR-specific elements

To be able to see all relevant information regarding LPR recognitions in your MOBOTIX HUB Desk Client, on the **Alarm Manager** tab, do the following:

1. On the **Alarm Manager** tab, in the **Alarms** list, right-click the **Image** icon  next to the **Quick Filters** column. From the menu, select: **Object**, **Tag**, and **Type**.



2. Now **Type** displays all events related to LPR, **Tag** displays their country codes, and **Object** displays license plate numbers of the registered vehicles.



Viewing LPR related content

LPR in live mode

In live mode, you can view live video from the cameras that have been configured for license plate recognition (LPR). You can view video from several LPR cameras in a view at the same time. On the right-hand side of the view item, the LPR events appear whenever there is a match. In setup mode, you can change the settings that define how the list of license plate numbers displays.

When you click a license plate in the LPR event list, the live video automatically pauses and changes to independent playback. To go back to viewing live video, either click the license plate again or click the **Independent playback** icon on the camera toolbar.

LPR on the Search tab

On the **Search** tab, you can search for video recordings associated with vehicles.

The LPR tab

On the **LPR** tab, you can investigate LPR events from all your LPR cameras and view the associated video recordings and license plate recognition data. Keep match lists updated and create reports.

The tab includes an LPR event list and an LPR camera preview. In the preview, you can view video associated with LPR event details. Below the preview, information about the license plate appears together with details from the match list and the license plate style that it is associated with.

You can filter the event list according to the period, country module, LPR camera, match list, or license plate style. Use the **Search registration number** field to search for a particular license plate registration number. By default, this list shows LPR events from the last hour.

You can specify and export a report of relevant events as PDF.

You can make updates to the existing match lists by using the **Match list** function.

LPR event list

The LPR event list displays all LPR events. By default, the list displays LPR events from the last hour and with the newest at the top, but your system administrator can change this.

When you select an LPR event from the list, you can see a preview to the right with the related video sequence for the event. The title bar of the preview shows the name of the LPR camera that the LPR event was triggered from. You also see the:

- License plate number
- Country module
- Time of the event

- Match list that triggered the event
- License plate style (see [License plate styles on page 9](#))

You can change how the LPR event list displays events; you can sort the columns and you can drag them to different positions. You can use the filters at the top of the list to filter LPR events or use the **Search registration number** field to search.



The LPR event list only displays LPR events from the time of your search or filter. If you want to see the latest LPR events, click the **Refresh** button.

License plate styles

A license plate style is a set of characteristics of a license plate. These characteristics include:

- The plate size and shape
- The text format and font
- The colors
- The type of vehicle that the license plate is used on.

Your system administrator can group license plate styles and give that group a custom name.



You can only add those license plate styles to match lists that were grouped and named by your system administrator.

Filtering LPR events

There are several ways you can filter the LPR event list, so it displays just the LPR events that you are interested in; you can click any of the filters at the top of the list to see only LPR events associated with that filter. Any filters you apply are immediately reflected in the list.

- **Period:** Select one of the available periods to see LPR events within that particular time
- **Country module:** Clear or select country modules to view only LPR events linked to a license plate from a particular country, state, or region
- **LPR camera:** Select one or more of the available LPR cameras to view only LPR events for those cameras
- **Match list:** Select one or more license plate lists to view only LPR events generated by those lists
- **License plate style:** Select one or more license plate styles to view only LPR events associated with those license plate styles

You can combine the filters, for example, for a particular country module on a certain date.

You can also use the **Search registration number** field to search for a particular license plate. Enter a combination of characters to find results with combinations of those characters. For example, if you enter the characters **XY 12** you will get license plates that have both XY and 12 in their number. If you enter **XY12** you will only get license plates that have XY12 in their number.

Edit match lists

You can add or delete license plates from match lists.

Add a match list

1. On the **LPR** tab, in the top-right corner of the window, click **Match lists** to open the **Match lists** window.
2. Click **Select match list**, and make the relevant edits.
3. To add a license plate registration number or a license plate style, click **Add**. Enter relevant information and click **OK**. You can only add those license plate styles to match lists that were grouped and named by your system administrator.
4. To edit an existing license plate registration number, you can use the search function to find the relevant registration number.
5. Double-click a single row to edit or select multiple rows and click **Edit**.
6. In the window, enter information and click **OK**. If the match list contains multiple columns, you can edit the information in all fields.

Alternatively, you can add a license plate to a match list by right-clicking an unlisted LPR event and selecting **Add to list**.

Delete license plates from match lists

1. To delete a license plate registration number, you can use the search function to find the relevant registration number. You can delete multiple rows at the same time if needed. Select them and click **Delete**.
2. Click **Close**.

You can also remove a license plate by selecting the relevant LPR event, and on the right, below the preview, clicking the **Remove from list** icon.

Import or export match lists

You can import a file with a list of license plates that you want to use in a match list. You have the following import options:

- Add license plates to the existing list
- Replace the existing list

This is useful if, for example, the lists are managed from a central location. Then they can keep all local installations updated by distributing a file.

Similarly you can export the complete list of license plates from a match list to an external location.

1. To import a match list:
 1. On the **LPR** tab, at the top right of the window, click **Match Lists** to open the **Match Lists** dialog box.
 2. Select the relevant list.
 3. To import a file, click **Import**.
 4. In the dialog box, specify the location of the import file and the import type. Click **Next**.
 5. Await the confirmation and click **Close**.
2. To export a match list:
 1. Click **Export**.
 2. In the dialog box, specify the location of the export file and click **Next**.
 3. Click **Close**.
 4. You can open and edit the exported file in, for example, Microsoft Excel.



Supported formats are .txt or .csv.

Export LPR events as a report

You can export a report of LPR events to a PDF file.

1. On the **LPR** tab, filter or search for the events you want to include in the report.

If the number of found events is very high, you will receive a recommendation to refine the search and thereby reduce the number of search results.
2. Click the **LPR Report** button.
3. Specify the following values and click **OK**:
 - Report name
 - Report destination
 - A comment field
 - An option to include snapshots

A progress bar appears at the top right of the MOBOTIX HUB Desk Client window.

4. Click **Details** to view the report.



If you want to change the paper format or font, open the **Settings** window, select **Advanced**, and change the **PDF report format** or **PDF report font** settings.

LPR on the Alarm Manager tab

On the **Alarm Manager** tab, you can view and investigate alarms related to LPR. Some customization is required before you can view the information:

- [Enable LPR-specific elements](#)
- Alarms list must be in Event mode (see [View LPR recognitions on page 12](#))

In general, read the sections about alarm management for more details on MOBOTIX HUB Desk Client functionality.

View LPR recognitions

You can view LPR recognitions in the alarm list. If you select events as the data source, all recognitions are displayed. If you select alarms as the data source, only the recognitions associated with an alarm are displayed.

Requirements

To use the **Type** field referred to in the steps below, the field must be enabled in MOBOTIX HUB Management Client by your system administrator.

1. Go to the **Alarm Manager** tab.
2. Click the **Setup** button to enter setup mode.
3. To view recognitions associated with an alarm:
 1. In the **Data Source** list, select **Alarm**.
 2. Select **Setup** again to exit setup mode and save your changes. The recognitions are displayed in the alarm list.
 3. To view incoming LPR alarms, enter **LPR** in the **Type** field.

4. To view all recognitions:
 1. In the **Data Source** list, select **Event**.
 2. Select **Setup** again to exit setup mode and save your changes. The recognitions are displayed in the alarm list.
 3. To view all incoming LPR events, enter **LPR** in the **Type** field.



The alarm list will display the filtered results only when you leave the field you modified.

Show or hide vehicle properties on the LPR tab

When you look at the match lists on the **LPR** tab, vehicle properties such as make, model, and type of vehicle are included by default in the results.

However, you might want to hide them in certain scenarios where these properties are not related to your use of XProtect LPR.

To switch between showing and hiding vehicle properties:

1. On the **LPR** tab, right-click any column header in the list, for example **Make** or **Model**, and select **Hide vehicle properties**. Vehicle properties are now hidden.
2. To show vehicle properties again, right-click any available column header, then select **Show vehicle properties**. They are now displayed again.

