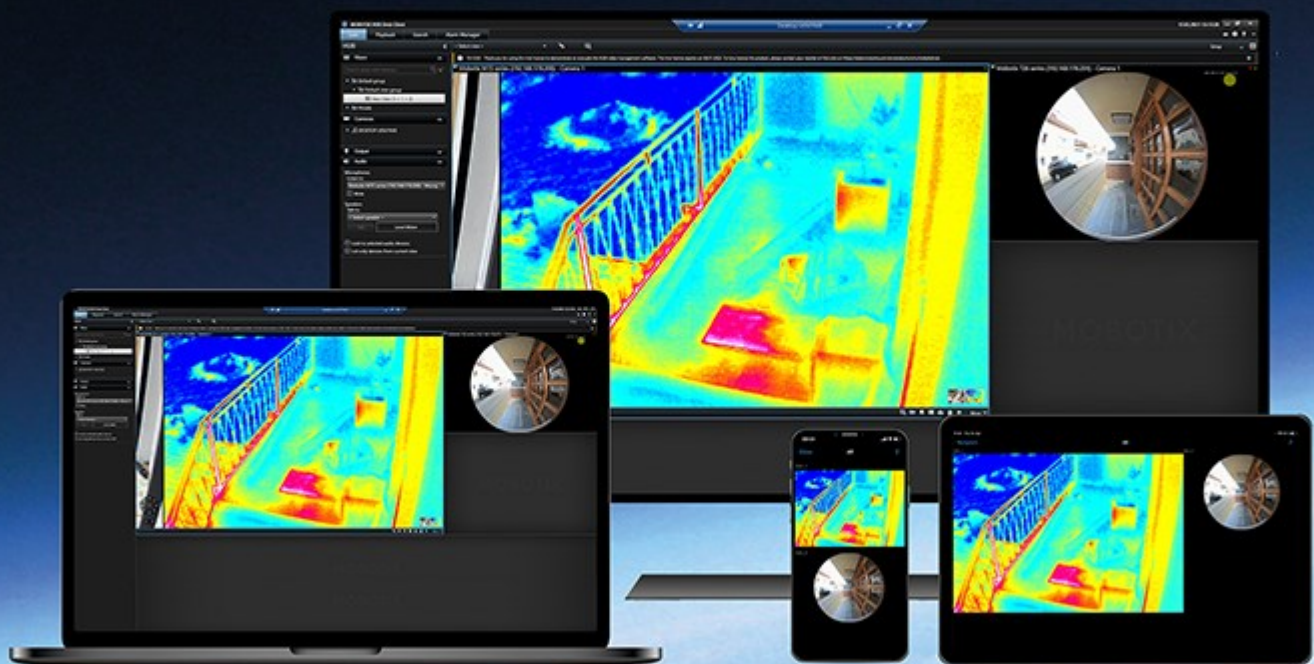


Administrator manual

MOBOTIX HUB Video Wall 2025 R3

© 2025 MOBOTIX AG



Contents

Copyright Copyright on page 4

Overview Overview on page 5

 MOBOTIX HUB Video Wall for administrators MOBOTIX HUB Video Wall for administrators on page 5

 Terminology related to Video Wall Terminology related to Video Wall on page 6

 Get started Get started on page 10

Licensing Licensing on page 11

 MOBOTIX HUB Video Wall licensing MOBOTIX HUB Video Wall licensing on page 11

Requirements and considerations Requirements and considerations on page 12

 MOBOTIX HUB Video Wall and MOBOTIX
 Federated Architecture MOBOTIX HUB Video Wall and MOBOTIX Federated Architecture on page 12

 Scenarios of how to configure your video wall Scenarios of how to configure your video wall on page 12

 Example 1 - video wall with six physical
 monitors in a single-site setup Example 1 - video wall with six physical monitors in a single-site setup on page 12

 Example 2 - video wall with sixteen
 physical monitors in a multi-site
 setup Example 2 - video wall with sixteen physical monitors in a multi-site setup on page 13

Configuration Configuration on page 15

 Configuring MOBOTIX HUB Video Wall Configuring MOBOTIX HUB Video Wall on page 15

 Create Video Wall definitions Create Video Wall definitions on page 15

 Add Video Wall monitors Add Video Wall monitors on page 16

 Position Video Wall monitors Position Video Wall monitors on page 18

 Create presets for your Video Wall definition Create presets for your Video Wall definition on page 20

 Define view layout and add cameras Define view layout and add cameras on page 21

 Activate presets for your Video Wall definition Activate presets for your Video Wall definition on page 23

 Specify user permissions for MOBOTIX HUB Video Wall Specify user permissions for MOBOTIX HUB Video Wall on page 24

 User permissions for Video Wall (explained) User permissions for Video Wall (explained) on page 26

 User permissions that apply to all Video Wall
 definitions User permissions that apply to all Video Wall definitions on page 26

 User permissions that apply to specific Video
 Wall definitions User permissions that apply to specific Video Wall definitions on page 28

 Create rules with Video Wall presets Create rules with Video Wall presets on page 30

 Blank screen monitoring (explained) Blank screen monitoring (explained) on page 30

 Test your Video Wall configuration Test your Video Wall configuration on page 31

User interface detailsUser interface details on page 32

Video Wall (Client node) Video Wall (Client node) on page 32

 Video Wall propertiesVideo Wall properties on page 32

 Monitor properties Monitor properties on page 33

Video Wall check box (Client node > Management Client Profiles) Video Wall check box (Client node > Management Client Profiles) on page 35

Actions and stop actions (Manage Rule wizard)Actions and stop actions (Manage Rule wizard) on page 35

Overall Security tab (Security node > Roles) Overall Security tab (Security node > Roles) on page 36

Video Wall tab (Security node > Roles)Video Wall tab (Security node > Roles) on page 37

Troubleshooting Troubleshooting on page 38

 Troubleshooting: MOBOTIX HUB Video Wall Troubleshooting: MOBOTIX HUB Video Wall on page 38

Copyright

MOBOTIX AG • Kaiserstrasse • D-67722 Langmeil • Tel.: +49 6302 9816 0 • sales@mobotix.com • www.mobotix.com

MOBOTIX is a trademark of MOBOTIX AG registered in the European Union, the U.S.A., and in other countries. Subject to change without notice. MOBOTIX do not assume any liability for technical or editorial errors or omissions contained herein. All rights reserved. © MOBOTIX AG 2025

Overview

MOBOTIX HUB Video Wall for administrators

MOBOTIX HUB Video Wall is an advanced extension that enables organizations to create video walls that meet their specific security demands. MOBOTIX HUB Video Wall provides an overview of all the video data in the MOBOTIX HUB VMS¹ system and supports any amount or combination of monitors.



MOBOTIX HUB Video Wall allows operators to view static video walls as defined by their system administrator with a fixed set of cameras and monitor layout. However, the video wall is also operator-driven in the sense that operators can control what is being displayed. This includes:

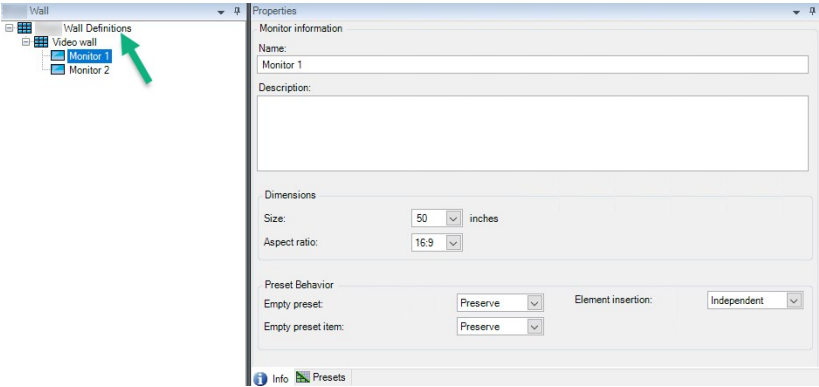
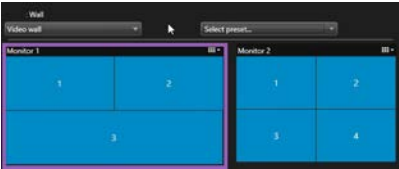
- Pushing cameras and other types of content to the video wall, for example images, text, alarms, and smart map
- Sending entire views to the monitors
- In the course of certain events, applying alternate [presets](#)²

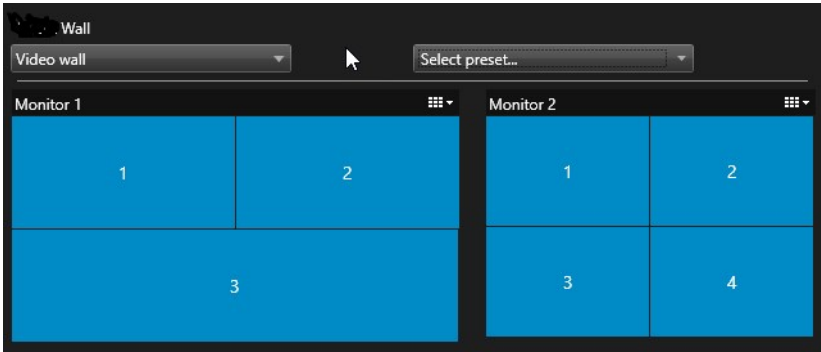
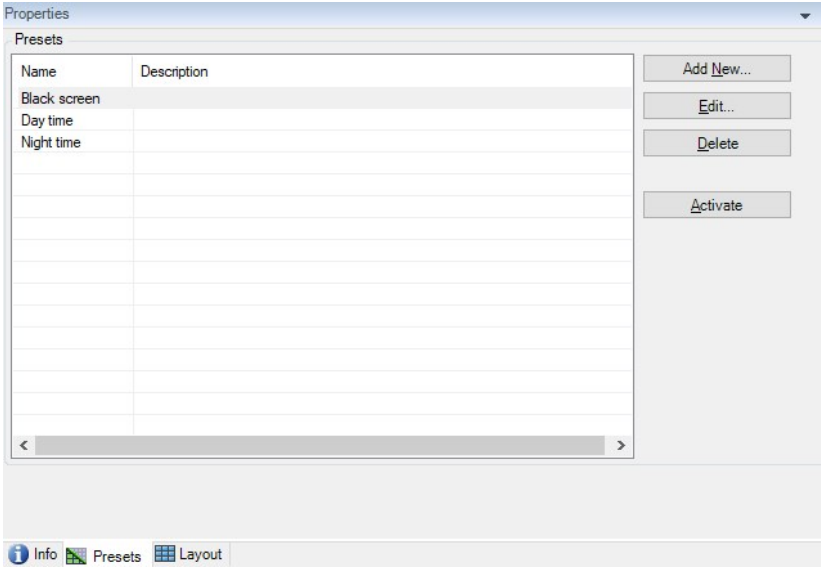

¹Short for "Video Management Software".

²A predefined layout for one or more Video Wall monitors in MOBOTIX HUB Desk Client. Presets determine which cameras are displayed, and how content is structured on each monitor on the video wall.

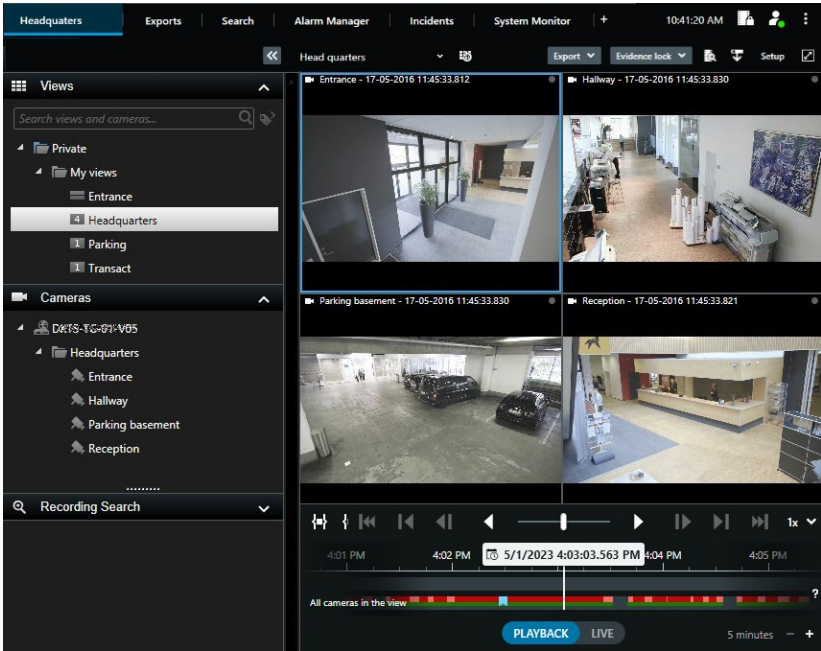
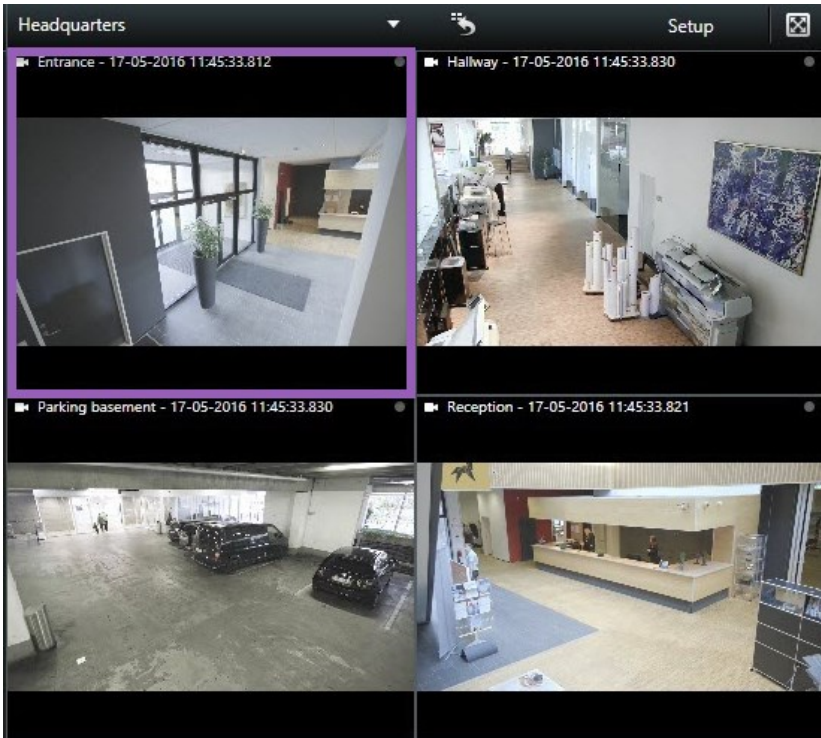
Finally, display changes can be controlled by rules that automatically change the presets based on specific events or time schedules.

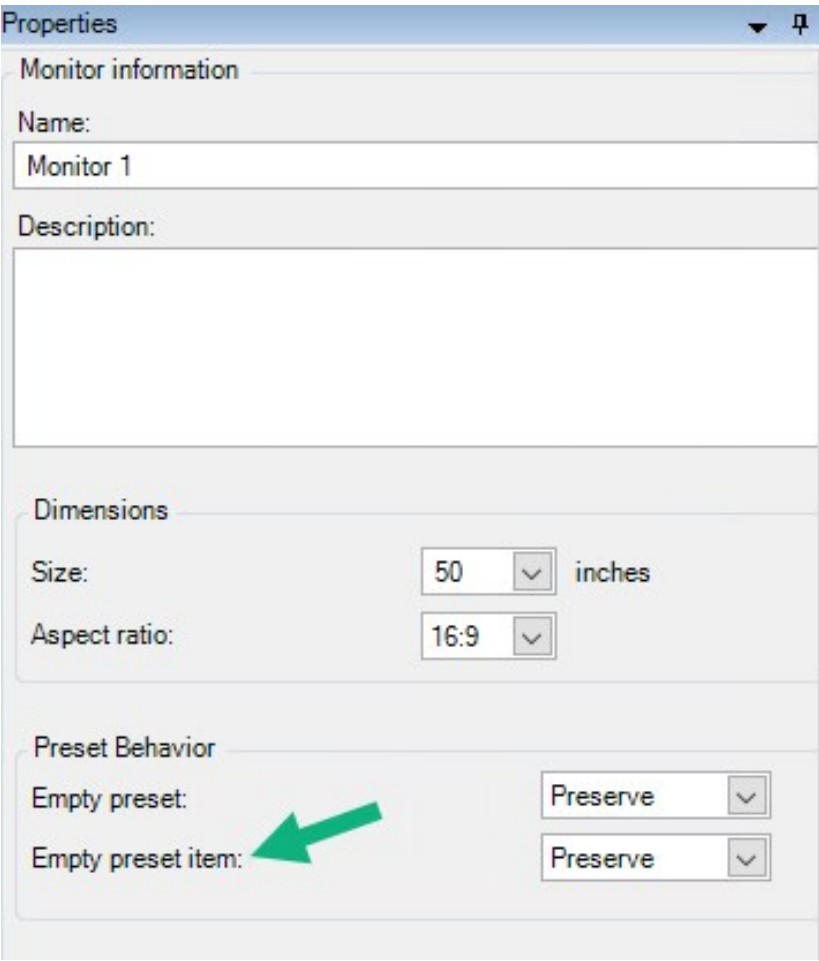
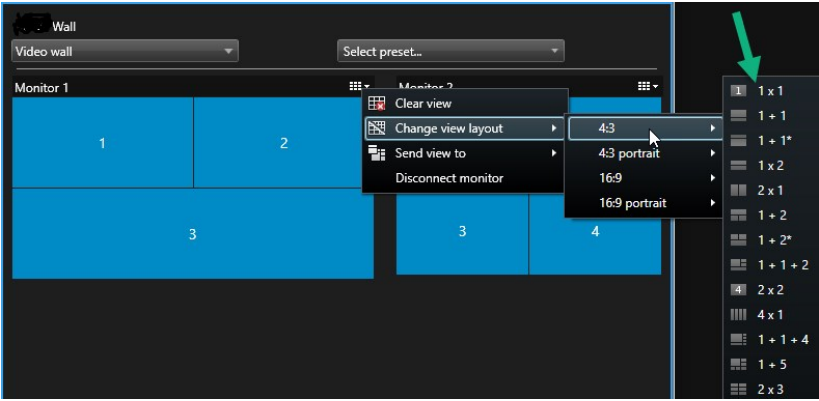
Terminology related to Video Wall

Term	Meaning
Video Wall definition	<p>The configuration of a video wall in MOBOTIX HUB Management Client, including the setup of Video Wall monitors and presets.</p> 
Video Wall monitor	<p>The virtual representation of a physical monitor. In most cases, we need to distinguish between physical monitors and Video Wall monitors.</p>  <p>The image shows the Video Wall control in MOBOTIX HUB Desk Client.</p>
Video Wall control	<p>The virtual representation of a video wall that allows operators to push content onto the video wall.</p>

Term	Meaning
	
Preset	<p>A predefined layout for one or more Video Wall monitors. Presets determine which cameras are displayed, and how content is laid out on each monitor on the video wall.</p>  <div> If you come across the term "preset" in the context of PTZ cameras, then it has a different meaning and refers to the concept preset position¹.</div>
View	<p>A grouping of cameras or other elements, for example webpages, that allows operators to view video from related cameras and other types of content.</p>

¹Can be used for making the PTZ camera automatically move in different defined directions when particular events occur, and for specifying PTZ patrolling profiles.

Term	Meaning
	
View item	<p>A position within a view that typically holds a camera.</p> 

Term	Meaning
Preset item	<p>A view item where its default content depends on the configuration of the underlying preset.</p> 
View layout	<p>The layout of a Video Wall monitor that defines how to arrange the view items, for example 2x3 or 1+2.</p> 

Get started

Before you can start using MOBOTIX HUB Video Wall, you need to:

1. Get and activate a base license for MOBOTIX HUB Video Wall. See also [MOBOTIX HUB Video Wall licensing on page 11](#).
2. Configure MOBOTIX HUB Video Wall and set the user permissions in MOBOTIX HUB Management Client. See also [Configuring MOBOTIX HUB Video Wall on page 15](#) and [Specify user permissions for MOBOTIX HUB Video Wall on page 24](#).
3. Optionally, you can make the [Video Wall control](#)¹ available to operators in MOBOTIX HUB Desk Client.

¹A graphical representation of a video wall that allows you to control what is displayed on the different monitors.

Licensing

MOBOTIX HUB Video Wall licensing

MOBOTIX HUB Video Wall requires the following video wall-related licenses:

- A **base license** for MOBOTIX HUB Video Wall that covers an unrestricted number of monitors displaying video on a video wall

Use of MOBOTIX HUB Video Wall is only supported in these products:

- MOBOTIX HUB L5 - a base license for MOBOTIX HUB Video Wall is included in the base license
- MOBOTIX HUB L4 - purchase a base license for MOBOTIX HUB Video Wall separately

Requirements and considerations

MOBOTIX HUB Video Wall and MOBOTIX Federated Architecture

If the central site uses MOBOTIX HUB Video Wall, you can also use the MOBOTIX HUB Video Wall features in the federated site hierarchy.

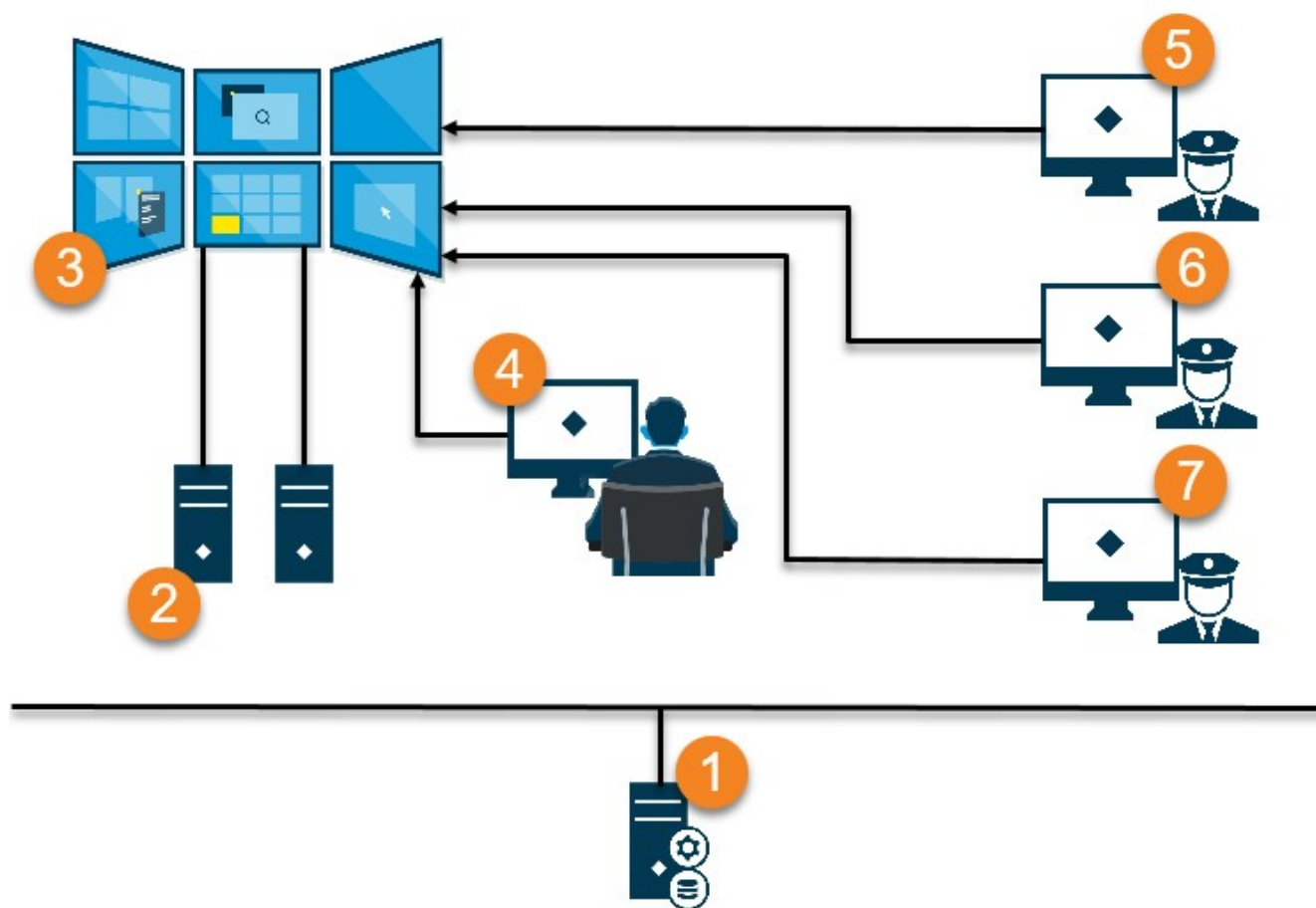
Scenarios of how to configure your video wall

There is no right or wrong way of setting up your video wall. It depends on your surveillance needs and the setup of your MOBOTIX HUB VMS system.

Here are two examples of how you could set up your video wall:

1. Example 1: A single-site MOBOTIX HUB VMS system with a video wall consisting of six physical monitors.
2. Example 2: A two-site MOBOTIX HUB VMS system with a relatively large video wall consisting of sixteen physical monitors.

Example 1 - video wall with six physical monitors in a single-site setup



Requirements and considerations

Explanation of the illustration:

1. The MOBOTIX HUB VMS server (the Management Server) that operators and system administrators connect to when they log in to MOBOTIX HUB Desk Client or MOBOTIX HUB Management Client.
2. Two unattended computers with MOBOTIX HUB Desk Client installed which are dedicated to driving the video wall. Six physical monitors are connected to these computers.
3. The video wall and its physical monitors.
4. In this example, the control room operator has the overall control of the video wall and decides what to display. They use their own computer to control what happens on the video wall by:
 - Opening the Video Wall monitors on their own displays or monitors. Whatever action the operator takes, it is mirrored on the video wall, for example, playing back recorded video
 - Using the Video Wall control

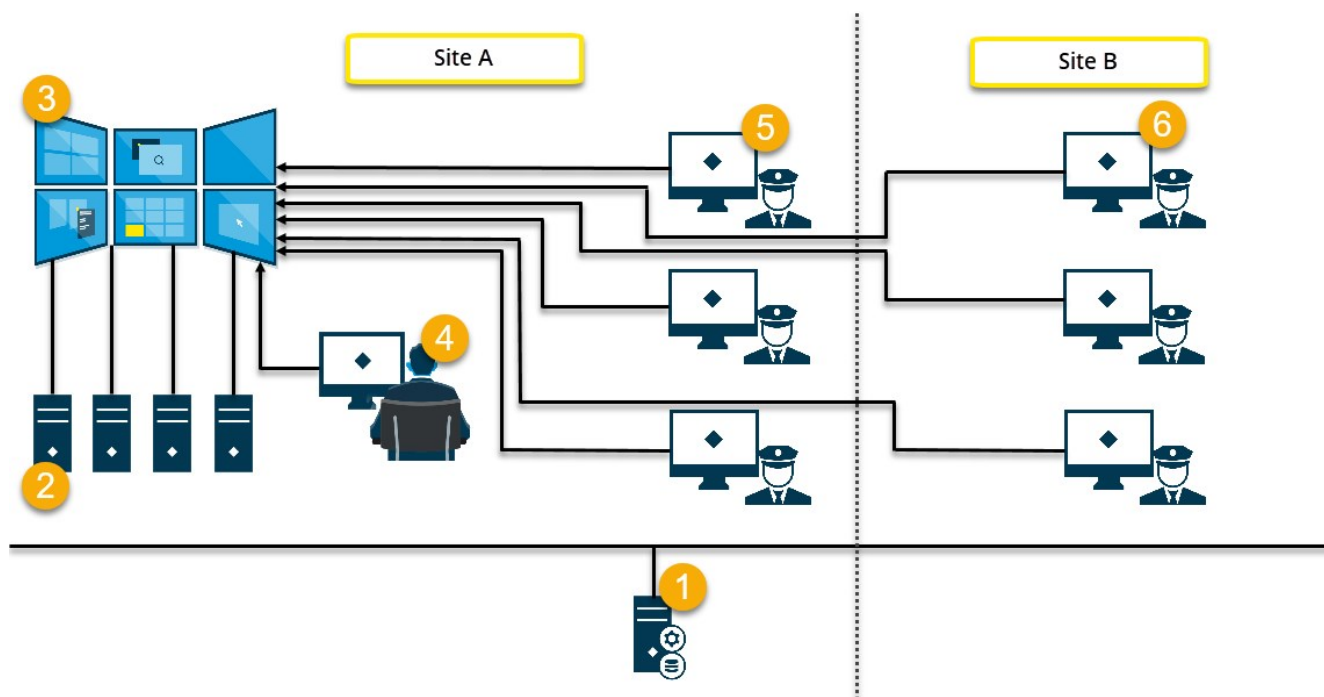


The control room operator is typically physically present in front of the video wall, but can also be located elsewhere.

5. (5, 6, 7) Operators typically have their own computers with MOBOTIX HUB Desk Client installed and use the Video Wall control to push content onto a video wall. When an incident occurs, the operators can respond by sharing content with other people who are watching the video wall. Such content can be, for example, a bookmarked video sequence or an image of a suspect.

Operators may sit in front of the video wall, but can also be situated elsewhere on the same site.

Example 2 - video wall with sixteen physical monitors in a multi-site setup



Requirements and considerations

Explanation of the illustration:

1. The MOBOTIX HUB VMS server (the Management Server) that operators and system administrators connect to when they log in to MOBOTIX HUB Desk Client or MOBOTIX HUB Management Client.
2. Four unattended computers with MOBOTIX HUB Desk Client installed which are dedicated to driving the video wall. When the number of physical monitors increase, MOBOTIX recommends that you distribute the load across multiple computers. In this example, there are four computers with four physical monitors distributed on each.
3. The video wall and its physical monitors.
4. In this example, the control room operator has the overall control of the video wall and decides what to display. They use their own computer to control what happens on the video wall by:
 - Opening the Video Wall monitors on their own displays or monitors. Whatever action the operator takes, it is mirrored on the video wall, for example, playing back recorded video
 - Using the Video Wall control



The control room operator is typically physically present in front of the video wall, but can also be located elsewhere.

5. Operators typically have their own computers with MOBOTIX HUB Desk Client installed and use the Video Wall control to push content onto a video wall. When an incident occurs, the operators can respond by sharing content with other people who are watching the video wall. Such content can be, for example, a bookmarked video sequence or an image of a suspect.

Operators on site A may be placed in front of the video wall, but can also be placed elsewhere, for example in other rooms or buildings.

6. Operators on site B do not have visual contact with the video wall, but they can view the Video Wall monitors on their own displays or monitors. When an incident requires attention, they can use the Video Wall control to push content onto the video wall.

Configuration

Configuring MOBOTIX HUB Video Wall

You can configure any number of Video Wall definitions. Configuring a Video Wall definition is a two-step process. First, you configure your Video Wall definition in MOBOTIX HUB Management Client, including setting user permissions and defining rules. Second, to enable operators to manually push content onto the video wall, MOBOTIX recommends that you add a [Video Wall control](#)¹ to dedicated views in MOBOTIX HUB Desk Client.

In MOBOTIX HUB Management Client:

1. Create the Video Wall definition and set the general properties, including the name and properties of the view items. See also [Create Video Wall definitions on page 15](#).
2. Add the Video Wall monitors, then set their size and position so they are consistent with the physical monitors of your video wall. See also [Add Video Wall monitors on page 16](#) and [Position Video Wall monitors on page 18](#). The Video Wall control in MOBOTIX HUB Desk Client uses these settings and shows how the monitors have been organized, for example next to or below each other.
3. (optional) Create the empty Video Wall [presets](#)² that are required to define the monitor view layout and add the default cameras at a later stage. See also [Create presets for your Video Wall definition on page 20](#).
4. (optional) For each monitor, select a preset, define its view layout, and add the default cameras. See also [Define view layout and add cameras on page 21](#).



When to use presets? If you want operators to push cameras and views onto the Video Wall manually, you do not need to create presets. However, if you plan to use rules to automatically change what to display on the video wall, you must define presets.

In MOBOTIX HUB Desk Client:

1. To allow operators to push content onto the video wall, create the views you need and add the Video Wall control. With the Video Wall control you can drag-and-drop or send cameras, entire views, and other types of content to individual monitors.
2. Change the view layout of individual Video Wall monitors that have been defined in MOBOTIX HUB Management Client.
3. Reset or change the presets already applied to the Video Wall definition.

Create Video Wall definitions

To configure a Video Wall definition, you must first create it in MOBOTIX HUB Management Client. Repeat the following steps for each Video Wall definition that you want to create:

¹A graphical representation of a video wall that allows you to control what is displayed on the different monitors.

²A predefined layout for one or more Video Wall monitors in MOBOTIX HUB Desk Client. Presets determine which cameras are displayed, and how content is structured on each monitor on the video wall.

1. In MOBOTIX HUB Management Client, expand **Client** and select **Video Wall**.
2. In the **Video Wall** pane, right-click **Video Wall Definitions** and select **Add Video Wall**. A window appears.

The screenshot shows a dialog box titled "Add [] Wall". Inside, there's a "Wall information" section with a "Name:" label and a text input field containing "My video wall". Below that is a "Description:" label and a large empty text area. Further down is a "General View Item Properties" section with three options: "Status text" (checked with a checkbox), "No title bar" (radio button), and "Title bar" (radio button, which is selected). At the bottom right are "OK" and "Cancel" buttons.

3. Specify the settings for the Video Wall.
4. In the **General View Item Properties** settings, specify if you want system status information and title bars to appear above the cameras in the views.
5. Click **OK**. The Video Wall definition is added to the Video Wall pane.
6. Next, add the Video Wall monitors. See also [Add Video Wall monitors on page 16](#).

Add Video Wall monitors

When you have created your Video Wall definition, you must add the Video Wall monitors that your video wall consists of and specify the monitor settings.

Requirements

You have created at least one Video Wall definition. See also [Create Video Wall definitions on page 15](#).

Steps:

- 1. In the **Video Wall** pane, right-click your **Video Wall** definition and select **Add Monitor**. A window appears.

Add Monitor

✕

Monitor information

Name:

Monitor 5

Description:

Displays six outdoor cameras.

Dimensions

Size:

20

inches

Aspect ratio:

4:3

Preset Behavior

Empty preset:

Preserve

Element insertion:

Independent

Empty preset item:

Preserve

OK

Cancel

- 2. Configure the size and aspect ratio of the monitor, so that it matches one of the physical monitors on the video wall.

3. Specify the preset behavior.

- **Empty preset** - control what happens in MOBOTIX HUB Desk Client when an operator applies an empty preset:
 - **Preserve** - keep what is currently being displayed
 - **Clear** - replace the current content with the empty preset
- **Empty preset item** - control what happens in MOBOTIX HUB Desk Client to individual preset items when an operator applies a preset with empty preset items:
 - **Preserve** - keep what the preset item is currently displaying
 - **Clear** - replace the preset item with the empty preset item
- **Element insertion** - control what happens in MOBOTIX HUB Desk Client when an [operator](#)¹ drags a camera onto an item in the preset:
 - **Independent** - replace the camera already in the preset item with the new camera
 - **Linked** - push the content from left to right from the view item where you inserted the new camera

4. Click **OK** to save your changes.

5. Keep adding Video Wall monitors until the number of Video Wall monitors matches the number of physical monitors.

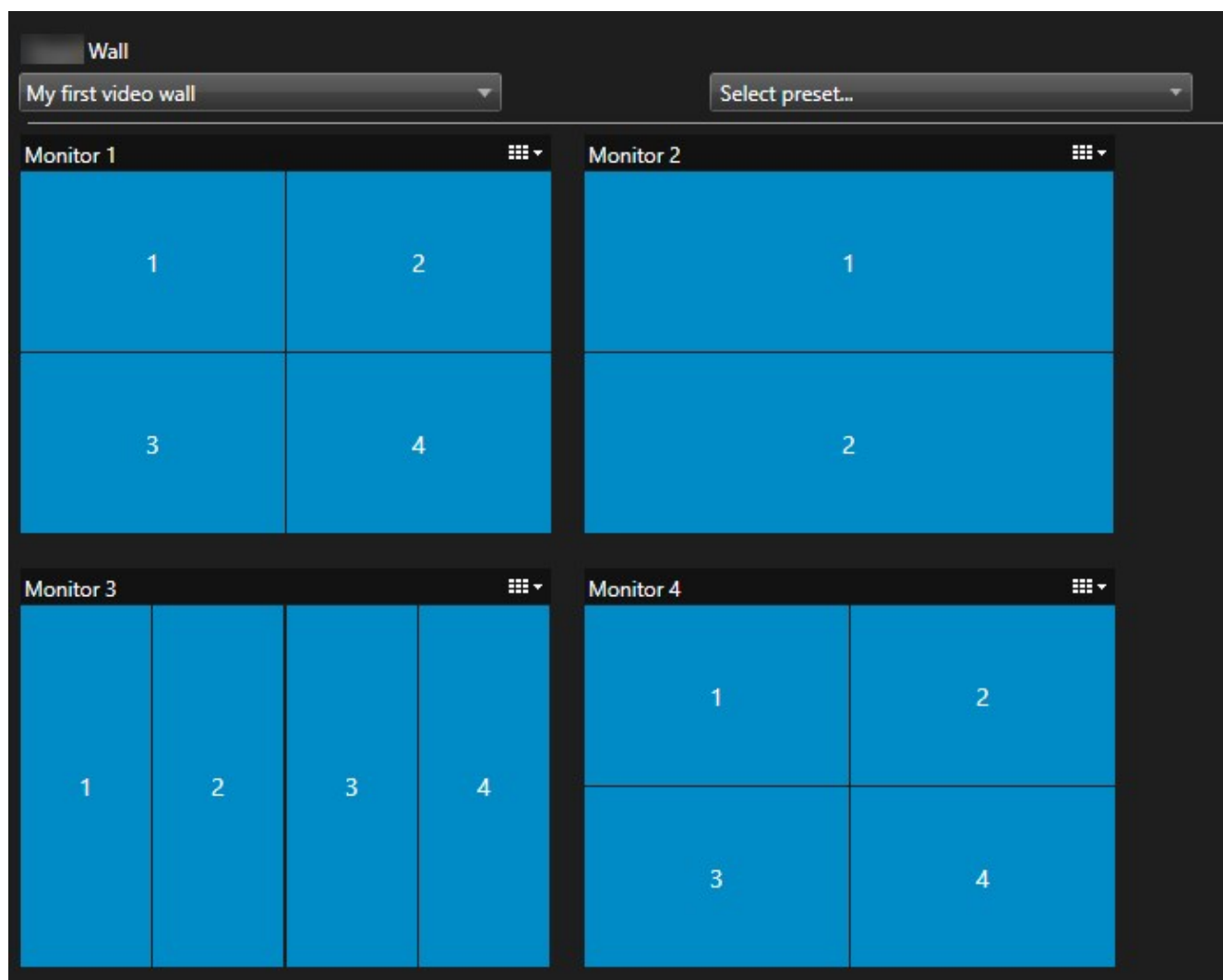
6. Next, position the monitors. See also [Position Video Wall monitors on page 18](#).

Position Video Wall monitors

When you have added the monitors to your Video Wall definition, you must position the different monitors to match the setup of the physical monitors on the video wall.

Example

¹A professional user of an MOBOTIX HUB client application.



The image in the example shows the Video Wall control in MOBOTIX HUB Desk Client. The four monitors are laid out in sequence and in two rows - starting with **Monitor 1** and ending with **Monitor 4**.

Requirements

You have added the monitors to your Video Wall definition. See also [Add Video Wall monitors on page 16](#).

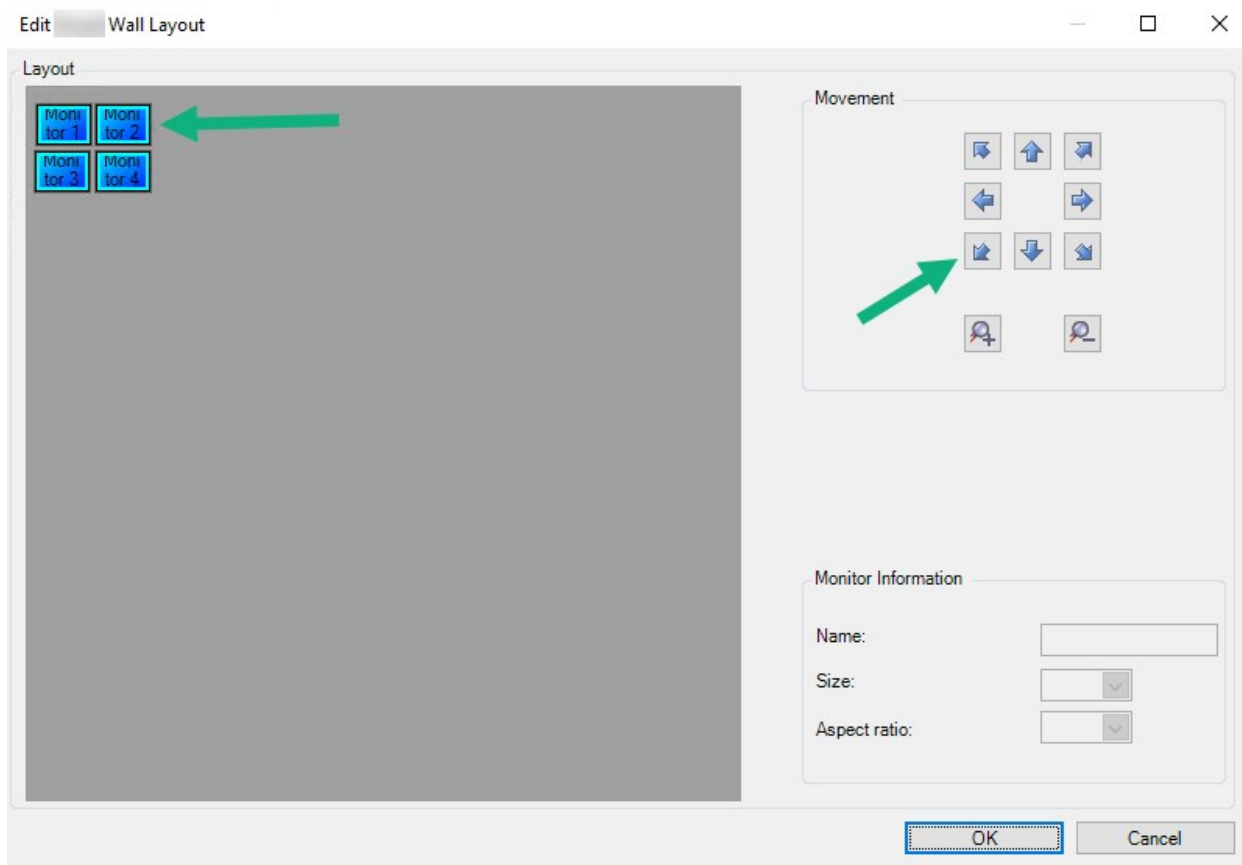
Steps:



1. In the **Video Wall** pane, select your Video Wall.
2. In the **Properties** pane, click the **Layout** tab.



Layout

3. Click the **Edit** button. A window appears.



4. Drag and drop the monitors to position them, or use the arrows.
5. Click  or  to zoom in or out.
6. If you have not already specified the size and aspect ratio of the monitors, you can do that now.
7. Click **OK** to save your changes. The positioning and sizing of monitors are visualized in the Video Wall control in MOBOTIX HUB Desk Client.
8. Next, add [presets](#)¹. Adding presets is a requirement for specifying the layout of Video Wall monitors and adding cameras to your monitors. See also [Create presets for your Video Wall definition on page 20](#).

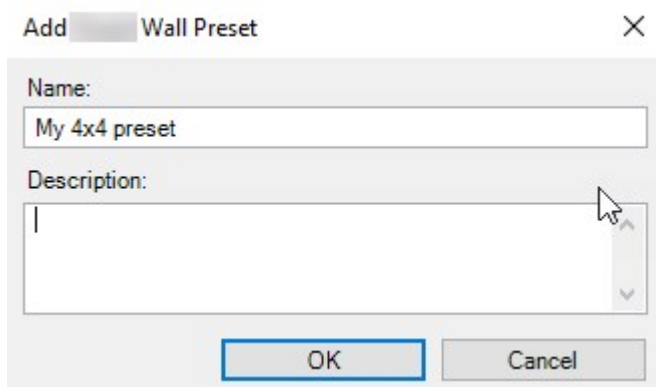
Create presets for your Video Wall definition

With presets, you can configure what your video wall or specific monitors show. Create as many presets as you need.

Steps:

¹A predefined layout for one or more Video Wall monitors in MOBOTIX HUB Desk Client. Presets determine which cameras are displayed, and how content is structured on each monitor on the video wall.

1. In the **Video Wall** pane, select your Video Wall.
2. In the **Properties** pane, click the **Presets** tab.
3. Click **Add New**. A window appears.



4. Enter a type and add a description if you want to.
5. Click **OK** to save your changes.
6. Repeat the steps above for each preset that you want to add.
7. Next, add view layout and cameras to the monitors. See also [Define view layout and add cameras on page 21](#).

Define view layout and add cameras

To control what to display on a monitor, you must select a preset, define a view layout, for example **2x2**, and then possibly add cameras.



- One preset typically covers all the monitors of the video wall. For each of those monitors, select the same preset and configure it according to what the monitor shall display.
- Presets can also be empty, which may be helpful if you are using blank screen monitoring. See also [Blank screen monitoring \(explained\) on page 30](#).

Requirements


At least one preset has been created. See also [Create presets for your Video Wall definition on page 20](#).

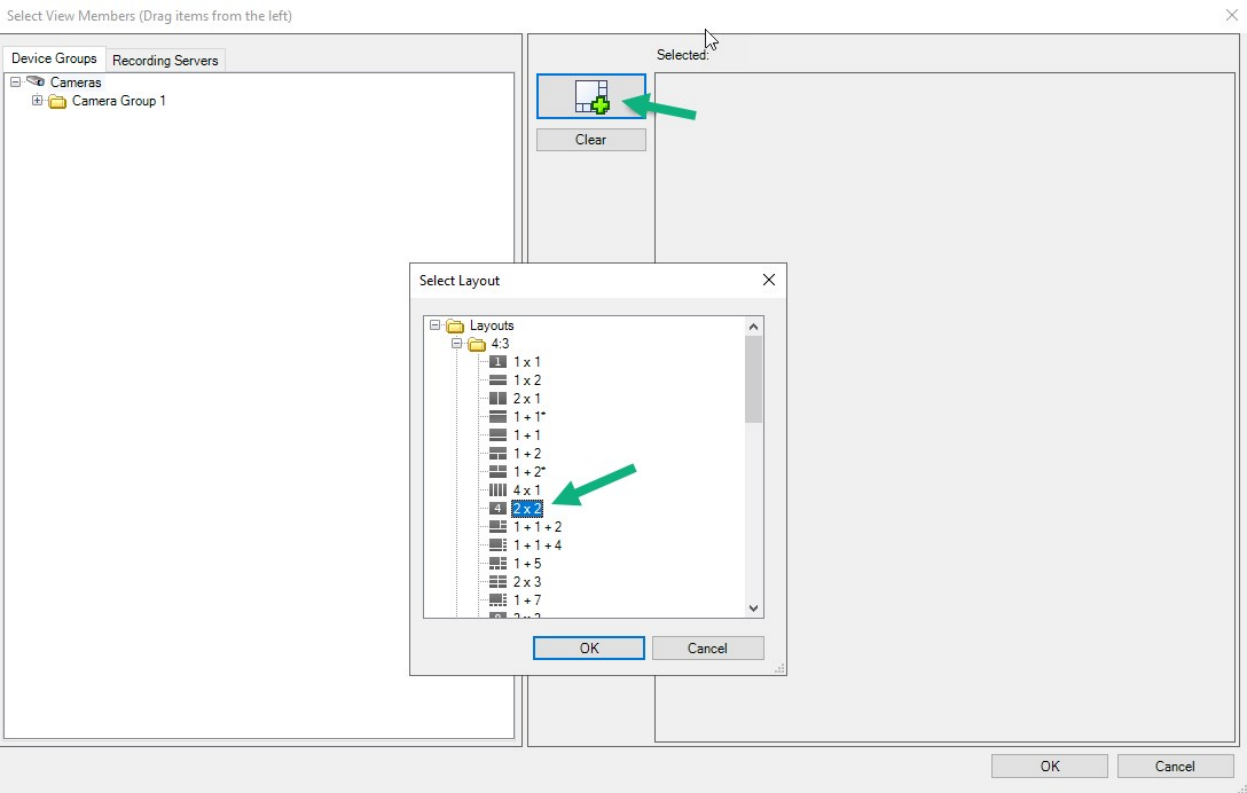
Steps:

1. In the **Video Wall** pane, select the monitor that you want to add cameras to.
2. In the **Properties** pane, click the **Presets** tab.
3. Select the preset.

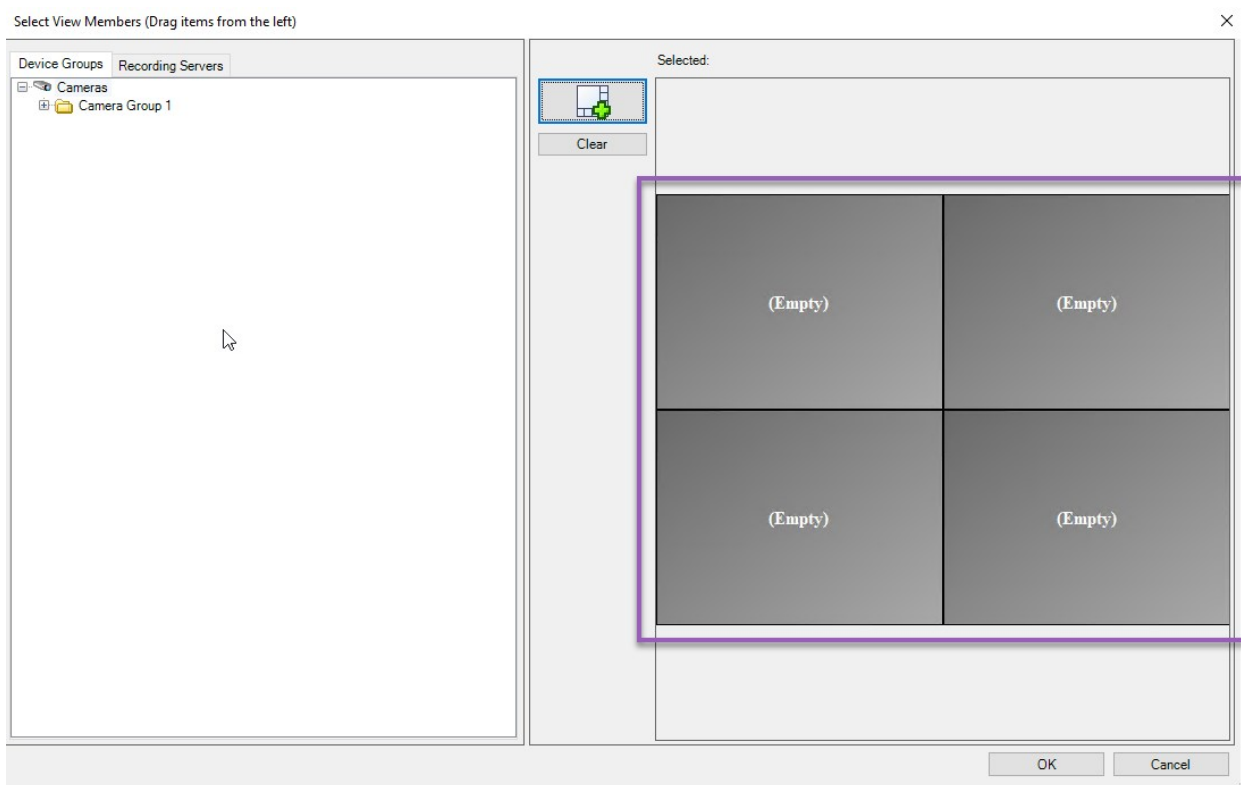
4. Click **Edit**. A window appears.



5. Click . An additional window appears.



6. Select a layout and click **OK**. The layout is shown on the right-hand side of the first window.



7. From the **Device Groups** or **Recording Servers** tab, drag the cameras onto the preset items - one by one. You can also leave preset items empty.
8. Click **OK** to save your changes.
9. Repeat the steps above for each monitor.
10. Now, you can start using your **Video Wall** in MOBOTIX HUB Desk Client.



You must also configure the operators' user permissions for using MOBOTIX HUB Video Wall. See also [Specify user permissions for MOBOTIX HUB Video Wall on page 24](#).

Activate presets for your Video Wall definition

To view Video Wall content in MOBOTIX HUB Desk Client, first you must activate the presets created for your Video Wall definitions. You can also activate the presets in MOBOTIX HUB Desk Client.

Steps:

- 1. In the **Site Navigation** pane, expand **Security** and select **Roles**.
- 2. In the **Roles** pane, select an existing role, or create a new role by right-clicking and selecting **Add Role**.
- 3. To set user permissions for all Video Wall definitions, click the **Overall Security** tab.

Roles

Name

Administrators (Administrators have co

Operators

Role Settings

Select a security group for which to set security

Microphones

Speakers

Metadata

Input

Output

Wall

View Groups

User-defined Events

Analytics Events

Generic Events

Matrix

Rules

Role can perform the following on the selected security group

	Allow	Deny
Full control	<input checked="" type="checkbox"/>	<input type="checkbox"/>
Read	<input checked="" type="checkbox"/>	<input type="checkbox"/>
Edit	<input checked="" type="checkbox"/>	<input type="checkbox"/>
Delete	<input checked="" type="checkbox"/>	<input type="checkbox"/>
Operate	<input checked="" type="checkbox"/>	<input type="checkbox"/>
Create Wall	<input checked="" type="checkbox"/>	<input type="checkbox"/>
Manage security	<input checked="" type="checkbox"/>	<input type="checkbox"/>
Playback	<input checked="" type="checkbox"/>	<input type="checkbox"/>

Info

Users and Groups

Overall Security

Device

PTZ

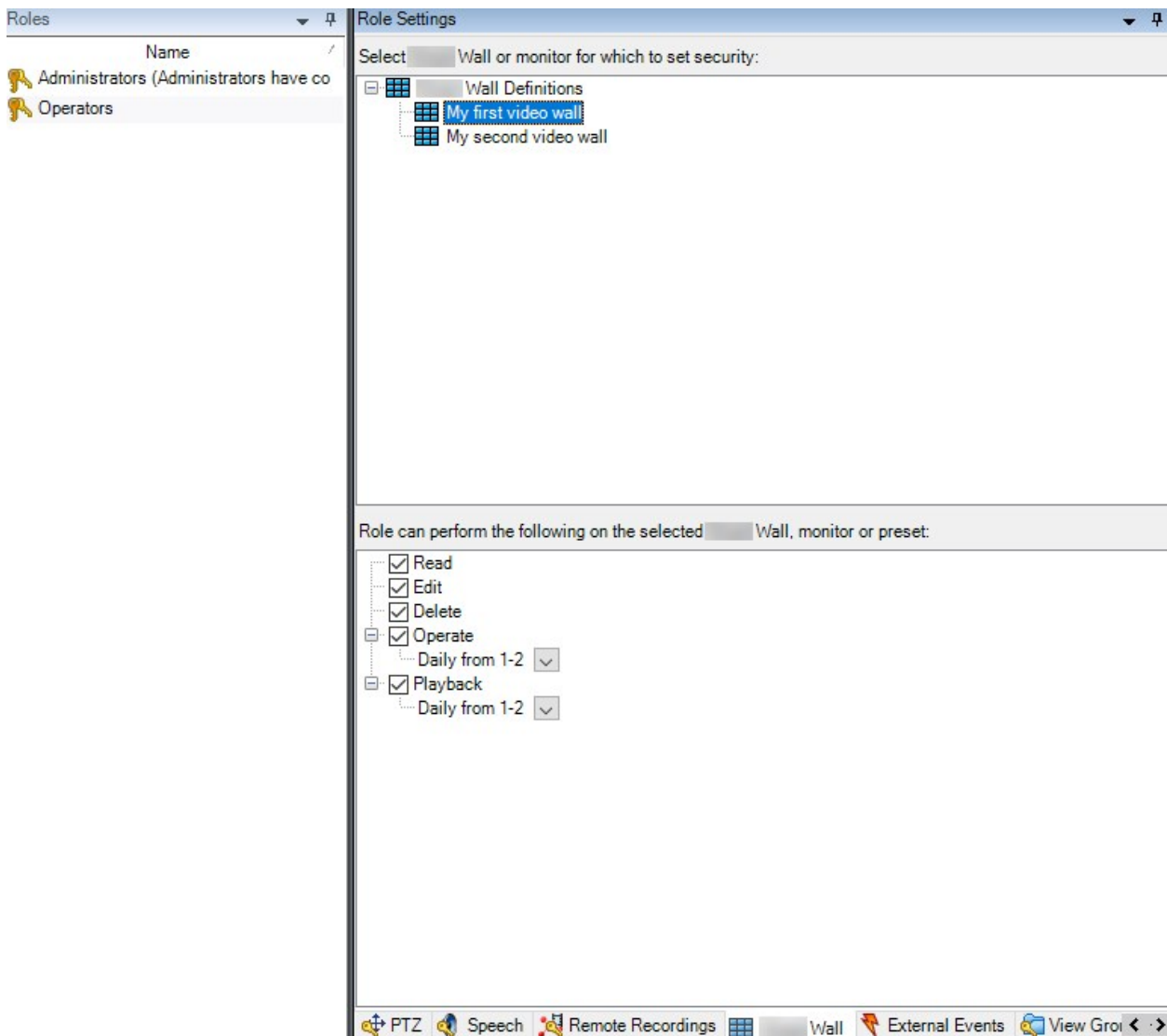
Speech

Remote Recordings

Wall

External Ever

- To set user permissions for specific Video Wall definitions, click the **Video Wall** tab.



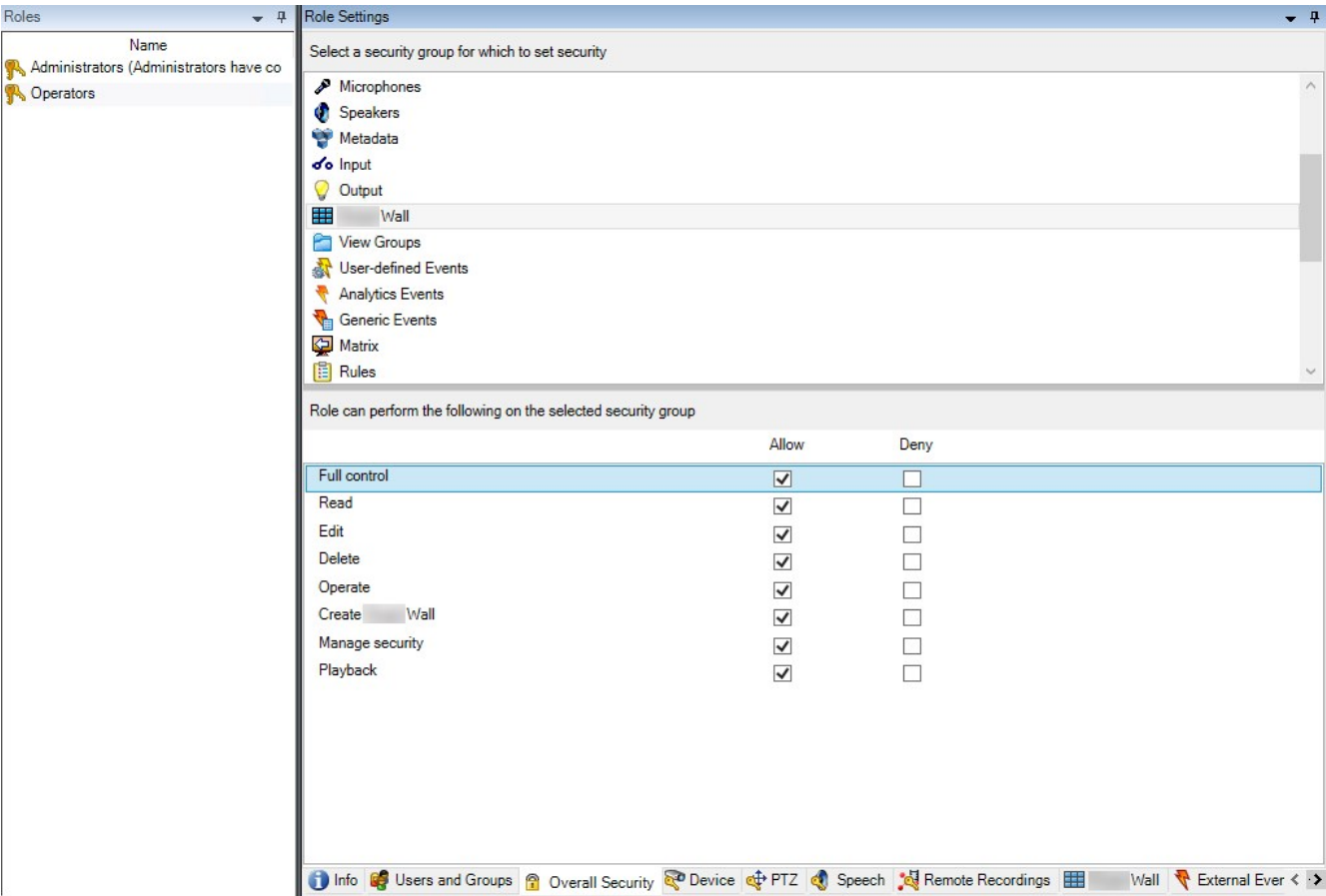
- Select the user permissions that are relevant for the selected role.
- (optional) To grant users **Operate** or **Playback** permissions for a specific period of time, select the required check box, and then select a time profile.

User permissions for Video Wall (explained)



The settings described in this topic pertain to **Roles** in MOBOTIX HUB Management Client. To set the user permissions for all Video Wall definitions, go to the **Overall Security** tab. To set the user permissions for specific Video Wall definitions, go to the **Video Wall** tab.

User permissions that apply to all Video Wall definitions

Roles > **Overall Security** tab > Video Wall

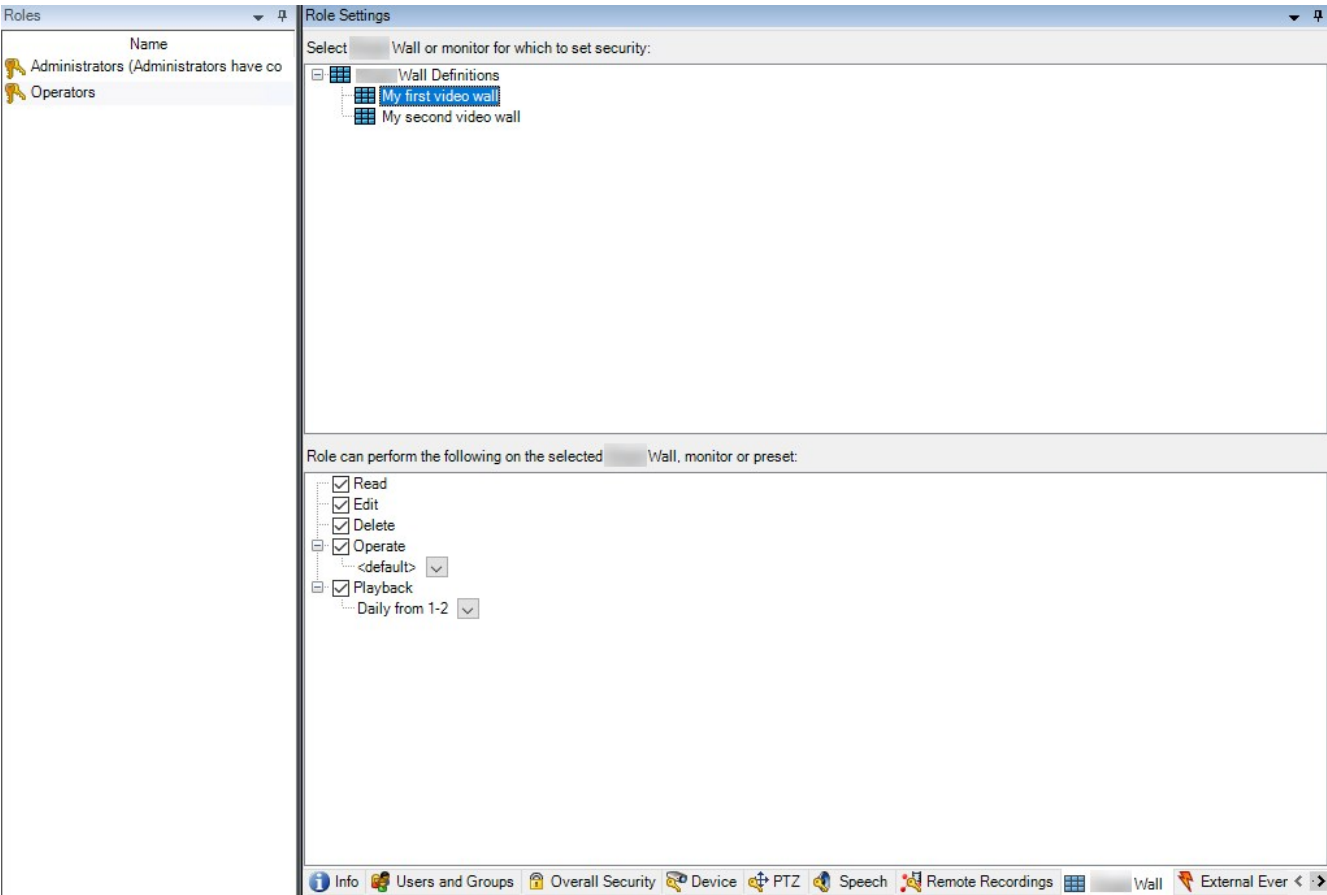


Security permission	Description
Full control	Enables the permission to manage all security permissions in MOBOTIX HUB Management Client.
Read	Enables the permission to view a video wall in MOBOTIX HUB Desk Client.
Edit	Enables the permission to edit properties for the Video Wall definition in MOBOTIX HUB Management Client.
Delete	Enables the permission to delete existing Video Wall definitions in MOBOTIX HUB Management Client.
Operate	Enables the permission to activate and modify Video Wall definitions, for example to change and activate presets or apply cameras on views in MOBOTIX HUB Desk Client and in MOBOTIX HUB Management Client.

Security permission	Description
	<div> You can associate Operate with time profiles that define when the user permission applies.</div>
Create Video Wall	Enables the permission to create new Video Wall definitions in MOBOTIX HUB Management Client.
Manage security	Enables the permission to manage security permissions in MOBOTIX HUB Management Client for the Video Wall definition.
Playback	<div><p>Enables the permission to play back recorded data from a video wall in MOBOTIX HUB Desk Client.</p><div> You can associate Playback with time profiles that define when the user permission applies.</div></div>

User permissions that apply to specific Video Wall definitions

Roles > Video Wall tab



Through roles, you can grant your client users Video Wall-related user permissions:

Name	Description
Read	Allows users to view the selected Video Wall in MOBOTIX HUB Desk Client.
Edit	Allows users to edit the selected Video Wall in the Management Client.
Delete	Allows users to delete the selected Video Wall in the Management Client.
Operate	Allows users to apply layouts on the selected Video Wall in MOBOTIX HUB Desk Client and to activate presets.
Playback	Allows users to play back recorded data from the selected Video Wall in MOBOTIX HUB Desk Client.

Create rules with Video Wall presets

By combining rules and Video Wall presets, you can control and automate what is displayed on your video wall. For example, a rule can trigger your video wall to display a certain Video Wall preset during a certain day. You can even use rules to control what individual monitors display.

Example of a rule triggering a Video Wall preset:

Manage Rule

Name:

Change the preset in my video wall

Description:

Active:

☒

Step 3: Actions

Select actions to perform

☐ Start recording on <devices>

☐ Start feed on <devices>

☒ Set <Wall> to <preset>

☐ Set <Wall> <monitor> to show <cameras>

☐ Set <Wall> <monitor> to show text '<message>'

☐ Remove <cameras> from <Wall> monitor <monitor>

☐ Set live frame rate on <devices>

☐ Set recording frame rate on <devices>

☐ Set recording frame rate to all frames for MPEG-4/H.264/H.265 on <devices>

☐ Start patrolling on <device> using <profile> with PTZ <priority>

Edit the rule description (click an underlined item)

Perform an action in a time interval
within selected time in Daily from 1-2
Set <Wall> My first video wall to preset My 3x2 preset

Perform an action when time interval ends
Set <Wall> My first video wall to preset My 2x1 preset

Help

Cancel

< Back

Next >

Finish

Blank screen monitoring (explained)

Blank screen monitoring is an operation mode where operators only see video when a situation requires their attention. The video wall does not display any cameras during normal operation. Only when an event occurs does the video wall display video from the related cameras. When the incident has been resolved, the monitors showing the video are cleared.

To enable blank screen monitoring, you must create and apply a [preset](#)¹ that only has a view layout, but no cameras. Use rules to display the cameras associated with certain events on your video wall, then clear the monitors again. See also [Create rules with Video Wall presets on page 30](#).

Test your Video Wall configuration

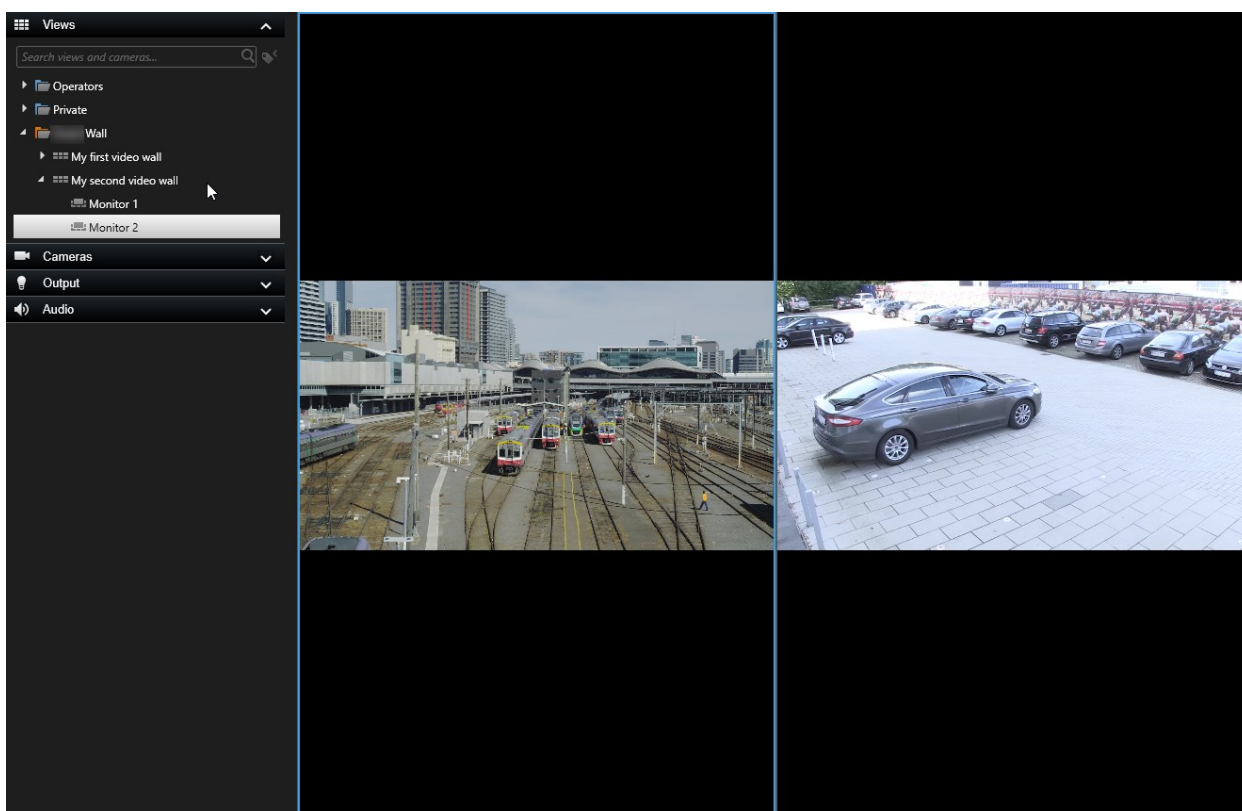
After configuring MOBOTIX HUB Video Wall in MOBOTIX HUB Management Client, you may want to test the configuration before you start adding the Video Wall control to your views in MOBOTIX HUB Desk Client.

Requirements

You have created at least one preset, assigned it to a monitor, defined its layout, and added at least one camera. See also [Create presets for your Video Wall definition on page 20](#) or [Define view layout and add cameras on page 21](#).

Steps:

1. Log in to MOBOTIX HUB Desk Client.
2. In the **Views** pane, expand the **Video Wall** node.
3. Select a Video Wall definition and then one of its monitors. If correctly configured, the main view shows the cameras that the [preset](#)² is configured to show.



¹A predefined layout for one or more Video Wall monitors in MOBOTIX HUB Desk Client. Presets determine which cameras are displayed, and how content is structured on each monitor on the video wall.

²A predefined layout for one or more Video Wall monitors in MOBOTIX HUB Desk Client. Presets determine which cameras are displayed, and how content is structured on each monitor on the video wall.

The example shows a monitor with two cameras.

User interface details

Video Wall (Client node)

Video Wall properties

Info tab

On the **Info** tab for a Video Wall definition, you can add and edit Video Wall properties.

Name	Description
Name	The name of the Video Wall definition. Displayed in MOBOTIX HUB Desk Client as the Video Wall view group name.
Description	A description of the Video Wall definition. The description is only used internally in MOBOTIX HUB Management Client.
Status text	Display camera and system status information in camera view items.
No title bar	Hide the title bar on all view items on the video wall.
Title bar	Show the title bar on all view items on the video wall.

Presets tab

On the **Presets** tab for a Video Wall definition, you can add and edit Video Wall [presets](#)¹.

Name	Description
Add New	Add a preset to your Video Wall definition. Enter a name and description for the preset.

¹A predefined layout for one or more Video Wall monitors in MOBOTIX HUB Desk Client. Presets determine which cameras are displayed, and how content is structured on each monitor on the video wall.

Configuration

Name	Description
Edit	Edit the name or description of a preset.
Delete	Delete a preset.
Activate	Apply the preset on the Video Wall monitors that are configured to use the preset. To apply a preset automatically, you must create a rule that uses the preset.

Layout tab


On the **Layout** tab for a Video Wall definition, you position the monitors, so their positions resemble the mounting of the physical monitors on the video wall. The layout is also used in MOBOTIX HUB Desk Client.

Name	Description
Edit	Adjust the positioning of the monitors.
Movement	To move a monitor to a new position, select the monitor and drag it to the desired position, or click one of the arrow buttons to move the monitor in the selected direction.
Zoom buttons	Zoom in or out of the Video Wall layout preview to ensure you position the monitors correctly.
Name	The name of the monitor. The name is displayed in MOBOTIX HUB Desk Client.
Size	The size of the physical monitor on the video wall.
Aspect ratio	The height/width relationship of the physical monitor on the video wall.

Monitor properties


Info tab

On the **Info** tab for a monitor in a Video Wall preset, you can add monitors and edit the monitor settings.

Name	Description
Name	The name of the monitor. The name is displayed in MOBOTIX HUB Desk Client.
Description	A description of the monitor. The description is only used internally in the MOBOTIX HUB Management Client.
Size	The size of the physical monitor on the video wall.
Aspect ratio	The height/width relationship of the physical monitor on the video wall.
Empty preset	<p>Defines what should be displayed on a monitor with an empty preset layout when a new Video Wall preset is triggered or selected in MOBOTIX HUB Desk Client:</p> <ul style="list-style-type: none"> • Select Preserve to keep the current content on the monitor. • Select Clear to clear all content so nothing is displayed on the monitor.
Empty preset item	<p>Defines what should be displayed in an empty preset item when a new Video Wall preset is triggered or selected in MOBOTIX HUB Desk Client:</p> <ul style="list-style-type: none"> • Select Preserve to keep the current content in the layout item. • Select Clear to clear the content so nothing is displayed in the layout item.
Element insertion	<p>Defines how cameras are inserted in the monitor layout when viewed in the MOBOTIX HUB Desk Client:</p> <ul style="list-style-type: none"> • Independent - only the content of the affected layout item changes, the rest of the content in the layout remain the same. • Linked - the contents of the layout items are pushed from left to right. If, for example, a camera is inserted in position 1, the previous camera of position 1 is pushed to position 2, the previous camera of position 2 is pushed to position 3, and so on. Illustrated in this example: 

Presets tab

On the **Presets** tab for a monitor in a Video Wall preset, you can edit the view layout and content of the monitor in the selected Video Wall preset.

Name	Description
Preset	A list of Video Wall presets for the selected Video Wall definition.
Edit	<p>Click Edit to edit the layout and the content of the selected monitor.</p> <p>Double-click a camera to remove it.</p> <p>Click Clear to define a new layout or to exclude the monitor in the Video Wall preset so the monitor is available for other content not controlled by the Video Wall preset.</p> <p>Click  to select the layout you want to use with your monitor, and click OK.</p>

Video Wall check box (Client node > Management Client Profiles)

How to find the Video Wall check box:

1. From Site Navigation, select **Client > Management Client Profiles**.
2. Then select a profile.
3. On the **Profile** tab, select **Navigation > Client**.

Element	Description
Client	Allows the administrator user associated with the Management Client profile to see Video Wall related features and settings.

Actions and stop actions (Manage Rule wizard)

How to find the Video Wall related actions and stop actions:



1. From the **Site Navigation**, select **Rules and Events > Rules**.
2. In the **Rules** pane, right click a rule and select to add or edit a rule to open the **Manage Rule** wizard,

A set of actions and stop actions related to MOBOTIX HUB Video Wall are available for rule creation in the **Manage Rule** wizard.

Action	Description
Set <Video Wall> to <preset>	<p>Sets the MOBOTIX HUB Video Wall to a selected preset. Specify the preset on the Video Wall Presets tab.</p> <p>No mandatory stop action: This type of action does not require a stop action. You can specify optional stop actions to be performed on either an event or after a period of time.</p>
Set <Video Wall> <monitor> to show <cameras>	<p>Sets a specific MOBOTIX HUB Video Wall monitor to display live video from the selected cameras on this site or any child site configured in MOBOTIX Federated Architecture.</p> <p>No mandatory stop action: This type of action does not require a stop action. You can specify optional stop actions to be performed on either an event or after a period of time.</p>
Set <Video Wall> <monitor> to show text <messages>	<p>Sets a specific MOBOTIX HUB Video Wall monitor to display a user-defined text message of up to 200 characters.</p> <p>No mandatory stop action: This type of action does not require a stop action. You can specify optional stop actions to be performed on either an event or after a period of time.</p>
Remove <cameras> from <Video Wall> monitor <monitor>	<p>Stop displaying video from a specific camera.</p> <p>No mandatory stop action: This type of action does not require a stop action. You can specify optional stop actions to be performed on either an event or after a period of time.</p>

Overall Security tab (Security node > Roles)

Security permission	Description
Full control	Enables the permission to manage all security permissions in MOBOTIX HUB Management Client.
Read	Enables the permission to view a video wall in MOBOTIX HUB Desk Client.
Edit	Enables the permission to edit properties for the Video Wall definition in MOBOTIX HUB Management Client.

Security permission	Description
Delete	Enables the permission to delete existing Video Wall definitions in MOBOTIX HUB Management Client.
Operate	<p>Enables the permission to activate and modify Video Wall definitions, for example to change and activate presets or apply cameras on views in MOBOTIX HUB Desk Client and in MOBOTIX HUB Management Client.</p> <div> You can associate Operate with time profiles that define when the user permission applies.</div>
Create Video Wall	Enables the permission to create new Video Wall definitions in MOBOTIX HUB Management Client.
Manage security	Enables the permission to manage security permissions in MOBOTIX HUB Management Client for the Video Wall definition.
Playback	<p>Enables the permission to play back recorded data from a video wall in MOBOTIX HUB Desk Client.</p> <div> You can associate Playback with time profiles that define when the user permission applies.</div>

Video Wall tab (Security node > Roles)

Through roles, you can grant your client users Video Wall-related user permissions:

Name	Description
Read	Allows users to view the selected Video Wall in MOBOTIX HUB Desk Client.
Edit	Allows users to edit the selected Video Wall in the Management Client.
Delete	Allows users to delete the selected Video Wall in the Management Client.
Operate	Allows users to apply layouts on the selected Video Wall in MOBOTIX HUB Desk Client and to activate presets.
Playback	Allows users to play back recorded data from the selected Video Wall in MOBOTIX HUB Desk Client.

Troubleshooting

Troubleshooting: MOBOTIX HUB Video Wall

My monitors do not display the layout that I specified for my Video Wall

Typically, this occurs because your system administrator did not activate the [preset](#)¹ for the monitor. Ask your system administrator to verify that the preset is active in Management Client.

My camera is not part of a preset. Why isn't it removed when I activate the preset?

This can be because the **Empty preset item** setting is not selected for the preset. Ask your system administrator to verify the setting for the preset in Management Client.

I cannot drag an item, for example a camera, to a view. When I click the item, nothing happens

This is a known issue in Microsoft Windows that can also occur in MOBOTIX HUB Video Wall. The workaround is press ESC one time, and the drag functionality should work again.

When I drag an image from a view to my Video Wall, it isn't displayed.

You probably did not embed the image in the view, and the computer that is running the Video Wall cannot access the image file. To ensure that everyone can see an image, it's a good idea to embed it in the view.

My Video Wall monitors are displayed on top of each other

When your system administrator added monitors to your Video Wall, he or she did not define the layout of the monitors. When your administrator adds monitors, the system automatically stacks them in the layout in the order in which they were added. Your administrator must then arrange them according to your needs.

I cannot drag an image from Windows Explorer to my Video Wall monitor. The cursor does not change to the Allow Drop icon

This occurs when your Desk Client is not running under the same user profile as Windows Explorer. For example, you are running Desk Client under the Local administrator user profile, but you are running Windows Explorer as a Standard user. To resolve this issue, ensure that both programs are running under the same user profile.

I have added the Alarm List to a view item, but I cannot use the scroll bar to view details

This is a known issue in MOBOTIX HUB Video Wall. To use the scroll bar, position the pointer outside the view item, and then press and hold the CTRL key. This prevents the view item's toolbar from covering the scroll bar. You can now move the pointer into the view item and use the scroll bar.

¹A predefined layout for one or more Video Wall monitors in MOBOTIX HUB Desk Client. Presets determine which cameras are displayed, and how content is structured on each monitor on the video wall.

