

# Senstar Symphony™ 7

Intelligent Video Management Software



## FEATURES AND BENEFITS

### Low Total Cost of Ownership

- High camera density per server (recording/storage optimization)
- Scalable architecture
- Flexible licensing
- No artificial camera limits
- Built-in server and storage failover
- Centralized cloud management via Senstar Enterprise Manager™

### Easy to use

- Web-based administration
- Customizable Windows® operator client
- Web and mobile clients
- Intuitive video analytic configuration
- Privacy controls

### Open ecosystem

- Runs on off-the-shelf hardware
- Broad device support
- ONVIF Profiles S and G
- RESTful API
- End-to-end SSL encryption

### Intelligent video analytics

- Native video analytics for alarm generation and business intelligence
- Available individually or bundled

Senstar Symphony 7 is the benchmark for intelligent video management software (VMS). With its scalable architecture and the highest camera density per server of any VMS, Symphony is the ideal solution for deployments of all sizes.

Symphony is easy to install, configure, and operate. It includes intuitive operator, browser, and mobile clients, while administration is handled via a built-in web interface.

### Open ecosystem

Symphony installs on off-the-shelf hardware. It supports thousands of network devices as well as industry standards, including ONVIF profiles S and G.

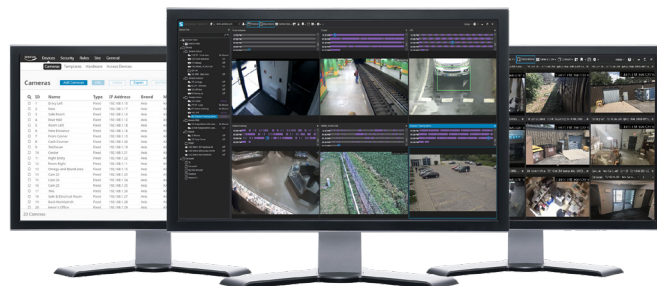
Out-of-box integrations with PSIM, intrusion, and access control products improve operator efficiency by delivering a seamless view of events.

Its RESTful API prevents vendor lock-in while end-to-end encryption ensures security.

## Low Total Cost of Ownership

Symphony delivers the lowest Total Cost of Ownership by consolidating servers, reducing Microsoft licensing, and improving user efficiency:

- Multi-server architecture eliminates the need for dedicated management servers (recording servers assume this responsibility).
- Optimized for both recording and streaming video.
- Embedded server failover functionality simplifies configuration and eliminates the need for costly Windows® Clustering.
- Native video analytics reduce server footprint by eliminating dedicated analytics servers and improving operator efficiency.



Scalable, intelligent video management



DATASHEET



Easy to use operator interfaces

Symphony includes several options for viewing video:

- **Windows® operator client** – Dedicated for video and alarm management, it offers a clean, video-centric design. Controls are shown based on device capability and user permissions, including PTZ controls, access control, intrusion sensors, two-way audio, and general I/O.
- **Web interface** – An HTML5-compliant web interface replicates key VMS functionality, including video playback, camera control, event timeline, and reports.
- **Mobile apps (iOS and Android)** – Support live video and playback, video analytics, PTZ control, and alarm management. Each app can connect to multiple servers, enabling a user to remotely monitor several deployments.



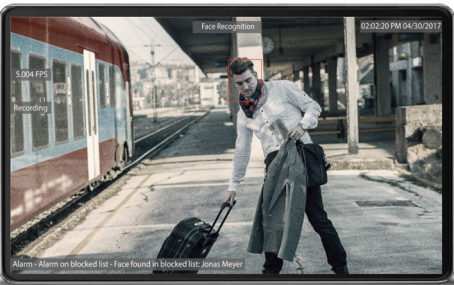
Free mobile apps are available from the App and Play stores

- **Video wall** – Included with an enterprise license, enables a highly customizable layout driven by video analytic rules, manual configuration, and camera drag-and-drop.

Native analytics

Symphony has been developed from the ground up to support video analytics. Server-based or embedded analytics are seamlessly supported, as well as third-party applications through the metadata engine.

Analytic applications include motion tracking, auto-PTZ tracking, face recognition, license plate recognition, left/removed object detection, and people counting. For a complete list, refer to Senstar’s *Video Analytics* datasheet.

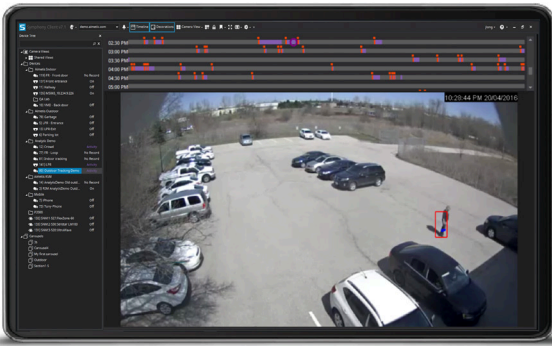


Fully integrated built-in analytics

Intelligent search and investigation

Symphony includes a graphical timeline and intelligent search capabilities. By leveraging events and metadata generated by its video analytics, operators can quickly find, review, and export video containing specific events or people.

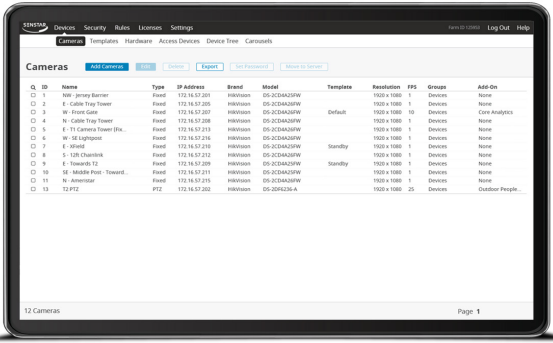
Comprehensive reports, including operator activity, event history, and video analytic results, can be also generated and exported.



Timeline graphically shows events, color-coded by type

Browser-based administrator client

Administration is handled via a browser-based client, eliminating the need to install and maintain a separate Windows® management application. The client can be accessed anywhere in the world over high security SSL encryption. Reusable templates and rules speed up the configuration of large deployments.



Simple and efficient browser-based administration

Centralized cloud management

Through the use of Senstar Enterprise Manager™, Symphony can be managed centrally, which dramatically reduces the administrative burden typical in multi-site deployments.

Software updates, configuration, and health monitoring can all be centralized ensuring a strong and up-to-date video deployment, while limiting downtime and operation costs.

Technical Specifications: Symphony Clients

Symphony client support is included with camera licensing (no additional client software purchases required).

	Windows® Client	Web Client	Mobile Client	Thin Client
Core Features				
Supported operating system/platform	Windows® 7, 8, 10	Web browser	iOS or Android	Linux appliance
Number of concurrent server connections	unlimited	unlimited	unlimited	1
Customizable user interface	■			
Graphical timeline	■	■		■
Hierarchical site map navigation	■	■	■	
Camera list navigation	■	■	■	
Visual tracking links (video overlay hotspots)	■			
Cameras from multiple servers and sites	■		■	■
Multi-monitor support	■			
Camera sequence	■			■
Panoramic (360-degree) support	■	■	■	■
Manually trigger outputs	■	■	■	
Advanced video analytic search (intelligent search)	with add-on			
Integrated messenger	■			
Alarm console	■			
Video export	■			■
Bookmark events	■			
Alarm log	■	■	■	
Remote support module	■			
Multiple languages	■	■	■	■
Basic map support	■			
Dynamic GIS map support (Enterprise server license)	■			
PTZ Support				
Manual movement control	■	■	■	■
Point and click control	■	■	■	
Zoom on marked area	■	■	■	■
Go to preset positions	■	■	■	■
Joystick support	■			■
Virtual Matrix				
Customizable multi-camera layouts	■	■	■	■
Configurable display options (fixed)	■			
Configurable display options (motion)	■			
Configurable display options (alarm)	■			■
User Access				
User monitoring	■			
Permissions per user	■	■	■	■
Permissions per user group	■	■	■	■
Security profiles	■			
Microsoft Active Directory	■	■	■	
Cross-domain authentication (Professional/Enterprise server license)	■	■	■	
Restrict simultaneous logins (Professional/Enterprise server license)	■	■	■	
Supervisor logins (Professional/Enterprise server license)	■			
Reports				
Login report	■			
Alarm counts and statistics	■			
Object count reports (e.g., people, vehicles)	with add-on			

## Technical Specifications: Symphony Server

	Standard License (single server)	Professional License (multi-server)	Enterprise License (high availability)
Core Features			
Supported operating systems	Windows® 7, 10, Server 2008, 2012, 2016		
Number of cameras per server	1024	1024	1024
Number of concurrent client connections	unlimited	unlimited	unlimited
Multi-server (server farm)	–	unlimited	unlimited
HTML5-compliant web client	■	■	■
Mobile application (iOS, Android)	■	■	■
Server virtualization	■	■	■
2-way audio	■	■	■
Unicast, multicast and multistream support	■	■	■
Network video support (MJPEG/MPEG-4/h.264/h.265)	■	■	■
Device packs	■	■	■
Multiple languages	■	■	■
Customizable user access levels	■	■	■
Privacy controls and video scrambling	■	■	■
Time-based access to recorded video		■	■
Automatic server failover			■
Video wall			■
Storage and Archiving			
Record locally or to edge/network storage	■	■	■
Record on motion (from camera), schedule, alarm and continuous	■	■	■
Redundant recording			■
Failover recording			■
Management			
Automatic camera detection	■	■	■
Centralized device management	■	■	■
Automatic configuration backups	■	■	■
Uninterrupted configuration changes	■	■	■
Remote diagnostics	■	■	■
SNMP health monitoring	■	■	■
CPU overload protection			■
Cloud management	Requires Senstar Enterprise Manager		
Integration			
External I/O devices	■	■	■
Generic events via TCP/IP	■	■	■
Alarm panel	■	■	■
Access control		■	■
Server API/SDK		■	■
OPC data access support		■	■
Alerts and Notifications			
Mobile devices (iOS and Android)	■	■	■
I/O devices	■	■	■
Email notification, FTP, TCP, SNMP, OPC	■	■	■

info@senstar.com • senstar.com