

# 2019 Product Guide

Extended Ethernet transmission  
via Copper cable (Coax, UTP, 2-Wire)

- Long distance transmission for network signal and PoE
- PoE Repeater



# INTERCOAX NETWORK

[www.intercoax.com](http://www.intercoax.com)

Rev.5.0

# Contents

## Introduction 1

## Product Guide 3

## Ethernet & PoE over Coax

### ECP-2701 ..... 4

Premium Single Port Ethernet over Coax Transceiver

### ECP-2704T ..... 5

Premium 4 Port Ethernet over Coax Transmitter

### ECP-2704R ..... 6

Premium 4 Port Ethernet over Coax Receiver

### ECP-2601T/R ..... 7

Premium Single Port Ethernet over Coax Transmitter / Receiver

### ECP-2808RM/2816RM ..... 8

Premium 8/16 Port Ethernet over Coax Managed Receiving Switch (NMS)

### ECP-9501T/R ..... 10

Single Port Ethernet over Coax Transmitter / Receiver (Elevator)

### ECP-9504R ..... 11

4 Port Ethernet over Coax Receiver

### ECP-9508R/9516R ..... 12

8 / 16 Port Ethernet over Coax Receiver

### ECP-8401T/R ..... 13

Single Port Ethernet over Coax Transmitter / Receiver

### ECP-8301EP/NP ..... 14

Single Port Ethernet over Coax Transmitter / Receiver

### ECP-101T/R ..... 15

Single Port Ethernet over Coax Transmitter / Receiver (Multicast)

### iECP-101T/R ..... 16

Premium Single Port Ethernet Over Coax Transmitter / Receiver with Network Diagnostic Feature (Multicast)

### MCP-501T/R / MCP-501TL/RL ..... 18

Industrial Single Port Ethernet/PoE over coax transmitter / receiver with M12 Interface

## Ethernet & PoE over UTP

### EUP-2601T/R ..... 19

Premium Single Port Ethernet over UTP Transmitter / Receiver

### EUP-2808RM/2816RM ..... 20

Premium 8/16 Port Ethernet over UTP Managed Receiving Switch (NMS)

### EUP-8401T/R ..... 22

Single Port Ethernet over UTP Transmitter / Receiver

### EUP-101T/R ..... 23

Single Port Ethernet over UTP Transmitter / Receiver (Multicast)

## Ethernet & PoE over 2-Wire

### ETP-2601T/R ..... 24

Premium Single Port Ethernet over 2-Wire Transmitter / Receiver

### ETP-101T/R ..... 25

Single Port Ethernet over 2-Wire Transmitter / Receiver (Multicast)

## Hybrid PoE Switch

### HPS-1008RM ..... 26

8 Port Hybrid PoE Switch (NMS)

### HPS-1008 ..... 27

8 Port Hybrid PoE Switch

### HPS-01 ..... 28

2 Port Hybrid PoE Switch (NMS)

### EPR-1001 ..... 29

Gigabit Ethernet & PoE+ Repeater

### EPR-101/111 ..... 30

Ethernet & PoE Repeater

## HDMI Extender

### HOC-500T/R ..... 31

HDMI over Coax Extender

## Others

### PF-560120 ..... 32

56VDC/1.2A Power Supply

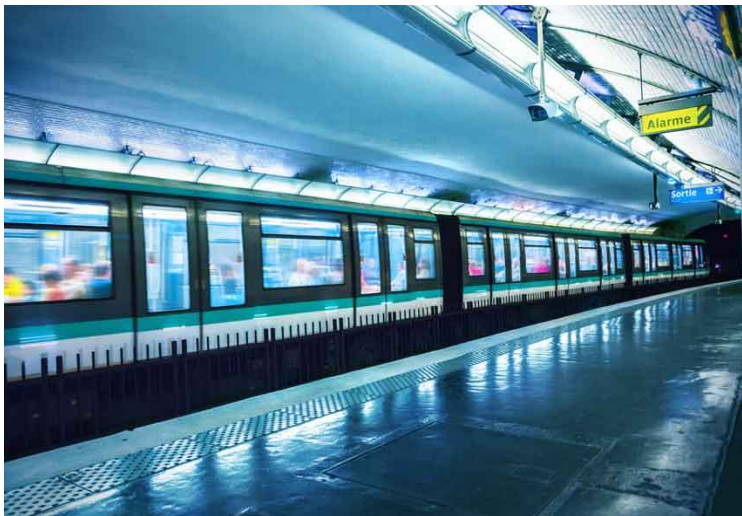
### BTE-02/03/04 ..... 33

Single Port BNC to RJ-45 / RJ-11 / Terminal Block Exchanger

### ERM-800 ..... 34

8 Port 19"/2U Rack Mount Bracket (for ECP/EUP-101R)

# Introduction



## About Intercoax EMEA

**INTERCOAX EMEA** opened its offices the 1st of January 2017. As daughter company of INTERCOAX Co.,LTD. - leading developer and manufacturer of value-added Ethernet over Coax extenders and PoE repeaters - we serve the European, Middle East and African market. Our Belgian offices offer quick response sales support, 48 hours delivery services, marketing and technical support. With the successful launch of the single port EoC (Ethernet over Coax) extender, the Intercoax product range has expanded to meet the needs of the strong growing surveillance market, based on the migration from analogue to IP systems.

From single port Ethernet over coax solutions to Multiport EoC managed switch, Intercoax has continued to develop customer oriented products and management software for enterprise grade needs and capabilities.

As one of the leading developers of high quality, cost effective EoC equipment, Intercoax will continue to provide various solutions and cutting-edge technologies to the maximum of our customer's satisfaction.

Feel free to request us our Proof Of Concept (PoC) test material : we offer you this free of charge service, allowing you and your customers to discover the unique capabilities of our Long Range Ethernet products, solutions and applications.

**Don't re-cable. Re-enable !**

Vincent Matthys  
CEO  
INTERCOAX EMEA





## Complete range of Ethernet over Coax/ Any Cable extenders & PoE repeaters

From single port EoC converter to multiport managed EoC switch, Intercoax offers complete range of Ethernet over Coax / Any Cable solution, designed to meet a variety of needs.

## Cost & Time saving solution

Re-using the existing cables such as Coaxial, UTP or 2 -wire cables.

## Easy & Fast installation

Analog cameras can be replaced with IP camera easy and fast way compared with pulling a new network cable.

## Extended cable distance

Ethernet over Coax / Any Cable Solution provides long distance data & power transmission over 100 meters distance limitation of network devices.

## Power over existing cable (Coax, UTP, 2-Wire)

Without pulling power cable, Intercoax devices provide power transmission feature up to over diversity of the cable.

## Multi-Connection

1:N, N:1, Daisy Chain, Star, etc.

## Various application

Using exclusive adapters, Intercoax devices allow to use not only coaxial cable but also, Cat.5e/6e, Cat.3, communication cable and power cable for long distance data and power transmission.

## No business interruption for renovation

- Easy & fast installation without pulling new cable, destroying wall for cabling work, etc.
- Minimal impact on customer operations.

## Data Encryption

128-bit AES encryption for secured data communication.



# Product Guide

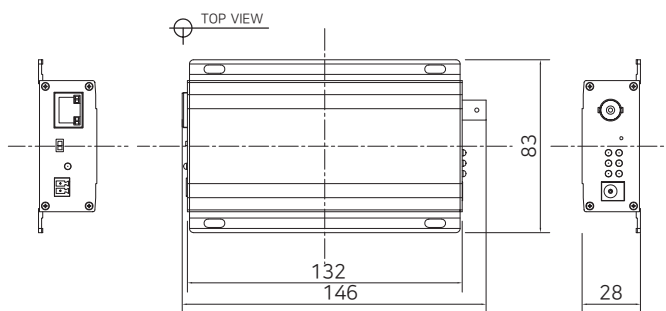
Model		Product category	Port	Ethernet	Max. Bandwidth (Mbps)	Max. Data Distance (m/RG-6)	Max. PoE Distance (m/RG-6)	Max. PoE Output (Watt)
Ethernet & PoE over Coax	ECP-2701	Premium Single Port EoC Transceiver	1	10/100/1000	270	2400	1200	60
	ECP-2704T	Premium 4 Port EoC Transmitter	4	10/100/1000	270	2400	1200	60 (sharing power)
	ECP-2704R	Premium 4 Port EoC Receiver	4	10/100/1000	270	2400	1200	-
	ECP-2601T	Premium Single Port EoC Transmitter	1	10/100	95 *(270)	2400	1200	60
	ECP-2601R	Premium Single Port EoC Receiver	1	10/100	95 *(270)	2400	1200	(IEEE802.3at input)
	ECP-2808RM	Premium 8 Port EoC Managed Receiving Switch	8	10/100/1000	540	2400	1200	-
	ECP-2816RM	Premium 16 Port EoC Managed Receiving Switch	16	10/100/1000	1000	2400	1200	-
	ECP-9501T	Single Port EoC Transmitter	1	10/100	95	1000	1000	60
	ECP-9501R	Single Port EoC Receiver	1	10/100	95	1000	1000	-
	ECP-9504R	4 Port EoC Receiver	4	10/100	95	1000	1000	-
	ECP-9508R	8 Port EoC Unmanaged Receiver	8	10/100/1000	180	1000	1000	-
	ECP-9516R	16 Port EoC Unmanaged Receiver	16	10/100/1000	360	1000	1000	-
	ECP-8401T	Single Port EoC Transmitter	1	10/100	80	2400	1200	60
	ECP-8401R	Single Port EoC Receiver	1	10/100	80	2400	1200	(IEEE802.3at input)
	ECP-8301EP	Single Port EoC Transceiver	1	10/100	80	2400	1200	60
	ECP-8301NP	Single Port EoC Transceiver	1	10/100	80	2400	1200	-
	ECP-101T	Single Port EoC Transmitter [Multicast Ready]	1	10/100	100	700	700	60
	ECP-101R	Single Port EoC Receiver [Multicast Ready]	1	10/100	100	700	700	(IEEE802.3at input)
Ethernet & PoE over UTP	EUP-2601T	Premium Single Port Ethernet over UTP Transmitter	1	10/100	95 *(270)	1200(Cat.5e)	1200(Cat.5e)	60
	EUP-2601R	Premium Single Port Ethernet over UTP Receiver	1	10/100	95 *(270)	1200(Cat.5e)	1200(Cat.5e)	(IEEE802.3at input)
	EUP-2808RM	8 Port UTP Managed Receiving Switch	8	10/100/1000	540	1200(Cat.5e)	1200(Cat.5e)	-
	EUP-2816RM	16 Port UTP Managed Receiving Switch	16	10/100/1000	1000	1200(Cat.5e)	1200(Cat.5e)	-
	EUP-8401T	Single Port Ethernet over UTP Transmitter	1	10/100	80	1200(Cat.5e)	1200(Cat.5e)	60
	EUP-8401R	Single Port Ethernet over UTP Receiver	1	10/100	80	1200(Cat.5e)	1200(Cat.5e)	(IEEE802.3at input)
	EUP-101T	Single Port Ethernet over UTP Transmitter [Multicast Ready]	1	10/100	100	600	600	60
	EUP-101R	Single Port Ethernet over UTP Receiver [Multicast Ready]	1	10/100	100	600	600	(IEEE802.3at input)
Ethernet & PoE over 2-Wire (1Pair)	ETP-2601T	Premium Single Port Ethernet over 2-Wire Transmitter	1	10/100	95 *(270)	600(Cat.5e)	300(Cat.5e)	60
	ETP-2601R	Premium Single Port Ethernet over 2-Wire Receiver	1	10/100	95 *(270)	600(Cat.5e)	300(Cat.5e)	(IEEE802.3at input)
	ETP-101T	Single Port Ethernet over 2-Wire Transmitter [Multicast Ready]	1	10/100	100	300	300	60
	ETP-101R	Single Port Ethernet over 2-Wire Receiver [Multicast Ready]	1	10/100	100	300	300	(IEEE802.3at input)
Hybrid PoE Switch	HPS-01	2 Port Hybrid PoE Switch	2	10/100	100	100 *(250)	100 *(250)	60 (IEEE802.3at input)
	HPS-1008RM	8 Port Hybrid PoE Switch	8	10/100/1000	1000	100 *(250)	100 *(250)	-
PoE Repeater	EPR-1001	Single Port Gigabit PoE repeater	1	10/100/1000	1000	100 *(250)	100 *(250)	60 (IEEE802.3at / DC56V input)
	EPR-101	Single Port PoE repeater	1	10/100	100	100 *(250)	100 *(250)	15 (IEEE802.3af input)
	EPR-111	Single Port PoE repeater	1	10/100	100	100 *(200)	100 *(200)	15 (IEEE802.3af input)

- ECP models are based on BNC for coaxial cable connection.
- EUP models are based on RJ45 for 4 pair UTP cable connection.
- ETP models are based on 2-Pin Terminal block for any 2-Wire of cable connection.
- Multi-port products may have different bandwidth and power for each port depending on number of connected cameras.
- Maximum distances for Data and PoE are tested with RG-6 Coaxial cable, 4 Pair Cat.5e cable or 1 Pair Cat.5e cable. Test result may vary depending on cable type & quality.
- Max PoE distance is tested with 7W PoE IP Camera.
- \*( ) : Max. Bandwidth between Intercoax 2 series models.
- \*\*( ) : Max. distance between Intercoax PoE Repeaters.

# ECP-2701 ▶ Premium Single Port Ethernet over Coax Transceiver



## Dimension



## Specification

Model		ECP-2701:1 Port Transceiver
Interface	Coax	1 x 75Ω BNC (Female) - Ethernet over Coax (B-LinX)
	Ethernet	1 x RJ45 - 10/100/1000 Base-T with Auto-detect MDIX
Transmission Rate		270Mbps Full Duplex (PHY: 500Mbps)
Transmission Distance	Ethernet	up to 2.4Km(RG-6)
	PoE (PoC)	up to 1.2Km (RG-6 / 7W camera)
LED Indication	Ethernet	1 x Data(Green) / 1 x PoE(Yellow)
	EoC	1 x BNC Join(Green)
	Power	1 x PWR(Blue)
	Link Quality	1 x Good(Green) / 1 x Bad(Red)
	Power Quality	1 x Good(Green) : 40V~57V / 1 x Bad(Red) : 40V Under
	12VDC out	1 x 12V DC OUT(Green)
Encryption		128-bit AES
Power	Input	B-LinX or DC12V~ 57V
	PoE Output	Support PoE (15W), PoE+ (30W), Extra PoE up to 60W
	DC Output	DC12V / 2A
Mechanical	Dimension	132(L) x 83(W) x 28(H)mm
	Weight	198g
Environment	Operating Temp	-20 ~ 60°C
	Storage Temp	-30 ~ 80°C
	Relative Humidity	10% ~ 90%
Compliance	Certification	FCC, CE, KC
	Surge Protection	IEC 61000-4-5 4kV(1.2 / 50us), 2kA(8 / 20us)
Optional Accessories		56VDC / 1.2A External Power Supply

## Overview

ECP-2701 is a High-Speed, long distance Ethernet & PoE extender that makes possible to transmit IP data up to 2.4Km and PoE up to 1.2Km through various analog cables in different situations.

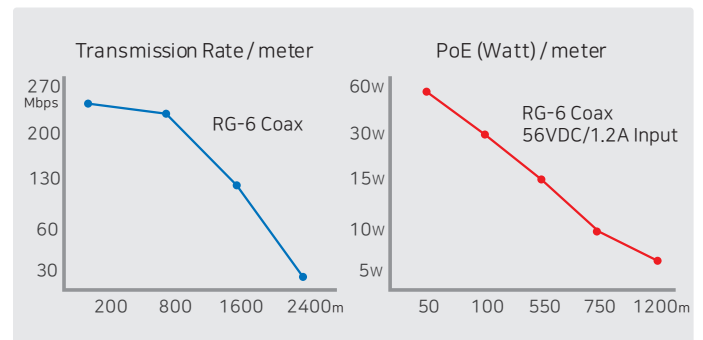
It is cost-effective and time saving solution to migrate existing analog system to IP based system since ECP-2701 supports easy installation utilizing the existing CCTV cable (Coax, UTP, 2wire).

With long distance transmission feature, the device makes to overcome 100 meters distance limitation easily and reduces the construction cost significantly compared with fiber optic configuration.

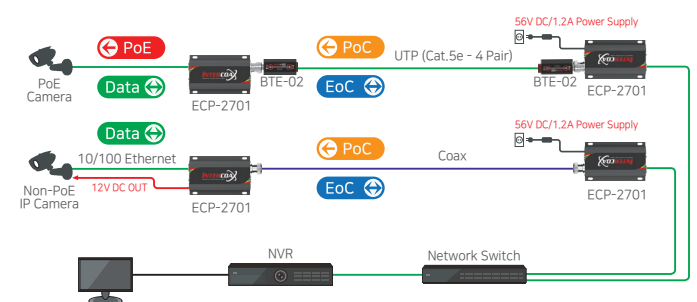
## Features

- Ethernet over coax (UTP, 2-Wire) communication following IEEE1901 Standard
- Data + Power over Coax (or UTP, 2-wire)
- Data distance up to 2.4Km
- PoE distance up to 1.2Km
- Max. 270Mbps Bandwidth
- 10/100/1000 Full Duplex
- 128bit AES network encryption
- Supports Multi-connection (Daisy chain, Star, etc.)
- PoE, PoE+, Extra PoE (Max. 60W output)
- Supports UTP, Telephone (2 Pairs), 2-Wire cable communication (Using BTE Series)
- Quality LED (Data & Power)
- Plug & Play
- Surge Protection
- 12VDC output (for Non-PoE Camera)

## Performance chart



## Connection Diagram



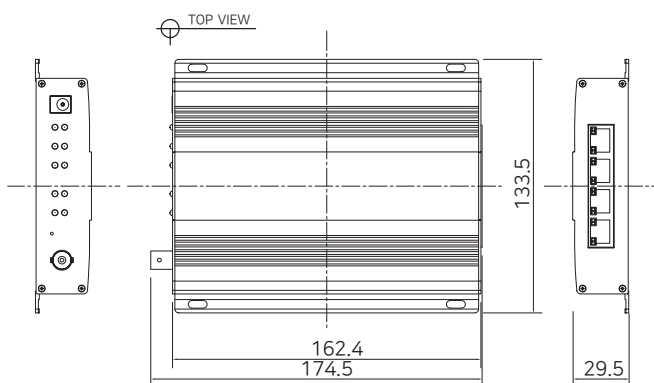
- Transmission distance may vary depending on the type and quality of cable, use of power and environmental condition.
- Distance is based on RG-6 coax cable and 7 Watt IP Camera.

# ECP-2704T

► Premium 4 Port Ethernet over Coax Transmitter



## Dimension



## Specification

Model		ECP-2704T: 4 Port Transceiver
Interface	Coax	1 x 75Ω BNC (Female) - Ethernet over Coax (B-LinX)
	Ethernet	4 x RJ45 - 10/100/1000 Base-T with Auto-detect MDIX
Transmission Rate		270Mbps Full Duplex (PHY: 500Mbps)
Transmission Distance	Ethernet	up to 2.4Km(RG-6)
	PoE (PoC)	up to 1.2Km (RG-6 / 7W camera)
LED Indication	Ethernet	4 x Data(Green) / 4 x PoE(Yellow)
	EoC	1 x BNC Join(Green)
	Power	1 x PWR(Blue)
	Link Quality	1 x Good(Green) / 1 x Bad(Red)
	Power Quality	1 x Good(Green) : 40V ~ 57V / 1 x Bad(Red) : 40V Under
	Port	4 x Port 1 ~ Port 4(Green)
Encryption		128-bit AES
Power	Input	B-LinX or DC12V~ 57V
	PoE Output	Support PoE (15W), PoE+ (30W), Extra PoE up to 60W
Mechanical	Dimension	162.4(L) x 133.5(W) x 29.5(H)mm
	Weight	343g
Environment	Operating Temp	-20 ~ 60°C
	Storage Temp	-30 ~ 80°C
	Relative Humidity	10% ~ 90%
Compliance	Certification	FCC, CE, KC
	Surge Protection	IEC 61000-4-5 4kV(1.2 / 50us), 2kA(8 / 20us)
Optional Accessories		56VDC / 1.2A External Power Supply

## Overview

ECP-2704T is a 4 port High-Speed, long distance Ethernet & PoE transmitter that receives IP data from 4 different IP cameras or other network devices and transmits the EoC signal over one coaxial cable.

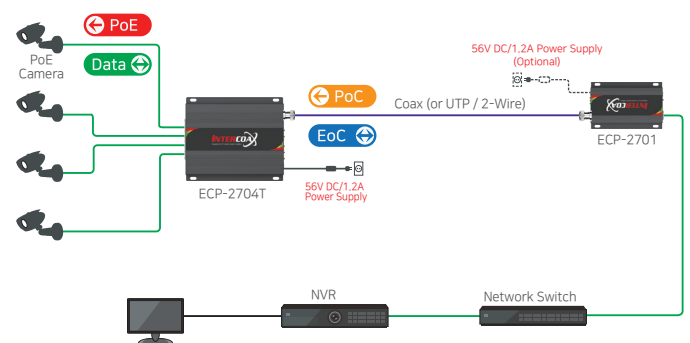
It is cost-effective and time saving solution to migrate existing analog system to IP based system since ECP-2704T supports easy installation utilizing the existing CCTV cable (Coax, UTP, 2wire).

With long distance transmission feature, the device makes to overcome 100 meters distance limitation easily and reduce the construction cost significantly compared with fiber optic configuration.

## Features

- Ethernet over coax (UTP, 2-Wire) communication following IEEE1901 Standard
- Data + Power over Coax (or UTP, 2-wire)
- Data distance up to 2.4Km
- PoE distance up to 1.2Km
- Max. 270Mbps Bandwidth
- 10/100/1000 Full Duplex
- 128bit AES network encryption
- Supports Multi-connection (Daisy chain, Star, etc.)
- PoE, PoE+, Extra PoE (Max. 60W output)
- Supports UTP, Telephone (2 Pairs), 2-Wire cable communication (Using BTE Series)
- Quality LED (Data & Power)
- Plug & Play
- Over Current Protection for safe power transmission.
- Surge Protection
- 4 Port PoE Output

## Connection Diagram

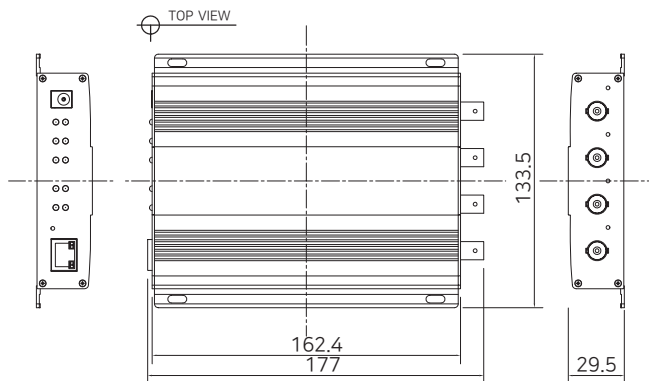


- Multi-Port devices may have different bandwidth and power current for each port depending on number of connected cameras.
- Transmission distance may vary depending on the type and quality of cable, use of power and environmental condition.
- Distance is based on RG-6 coax cable and 7 Watt IP Camera.





### Dimension



### Specification

Model		ECP-2704R: 4 Port Receiver
Interface	Coax	4 x 75Ω BNC (Female) - Ethernet over Coax (B-LinX)
	Ethernet	1 x RJ45 - 10/100/1000 Base-T with Auto-detect MDIX
Transmission Rate		270Mbps Full Duplex (PHY: 500Mbps)
Transmission Distance	Ethernet	up to 2.4Km(RG-6)
	PoE (PoC)	up to 1.2Km (RG-6 / 7W camera)
LED Indication	Ethernet	1 x Link(Yellow) / 1 x ACT(Green)
	EoC	1 x BNC Join(Green)
	Power	1 x PWR(Blue)
	Link Quality	1 x Good(Green) / 1 x Bad(Red)
	Power Quality	1 x Good(Green) : 40V~57V 1 x Bad(Red) : 40V Under
	Port	4 x Port 1 ~ Port 4(Green)
Encryption		128-bit AES
Power	Input	DC12V~ 57V
	PoE Output	Support PoE (15W), PoE+ (30W), Extra PoE up to 60W
Mechanical	Dimension	162.4(L) x 133.5(H) x 29.5(W)mm
	Weight	360g
Environment	Operating Temp	-20 ~ 60°C
	Storage Temp	-30 ~ 80°C
	Relative Humidity	10% ~ 90%
Compliance	Certification	FCC, CE, KC
	Surge Protection	IEC 61000-4-5 4kV(1.2 / 50us), 2kA(8 / 20us)
Optional Accessories		56VDC / 1.2A External Power Supply

### Overview

ECP-2704R is a 4 port Ultra High-Speed, long distance Ethernet & PoE receiver that receives 4 different signals from different EoC devices and transmits IP data to network switch or NVR via RJ45 port.

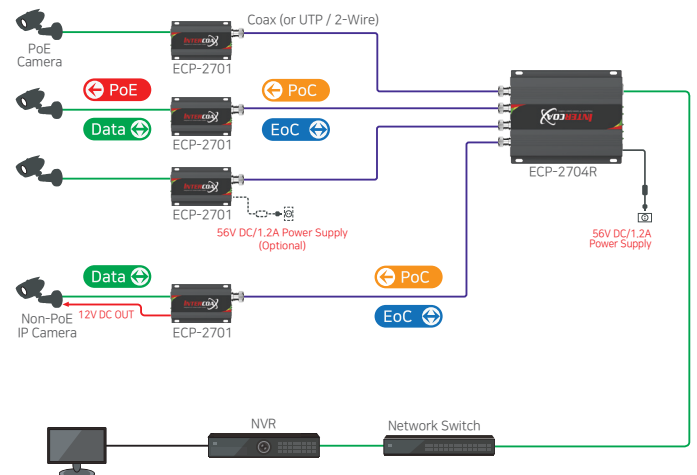
It is cost-effective and time saving solution to migrate existing analog system to IP based system since ECP-2704R supports easy installation utilizing the existing CCTV cable (Coax, UTP, 2wire).

With Smart Impedance Matching feature, the device maintains optimum signal level without any interference and Smart Over Current Protection (SOCP) feature makes the device to transmit power over coax safely.

### Features

- Ethernet over coax (UTP, 2-Wire) communication following IEEE1901 Standard
- Data + Power over Coax (or UTP, 2-wire)
- Data distance up to 2.4Km
- PoE distance up to 1.2Km
- Max. 270Mbps Bandwidth
- 10/100/1000 Full Duplex
- 128bit AES network encryption
- Supports Multi-connection (Daisy chain, Star, etc.)
- Up to 60W PoC (Power over Coax) output
- Supports UTP, Telephone (2 Pairs), 2-Wire cable communication (Using BTE Series)
- Quality LED (Data & Power)
- Plug & Play
- Over Current Protection for safe power transmission.
- Surge Protection

### Connection Diagram



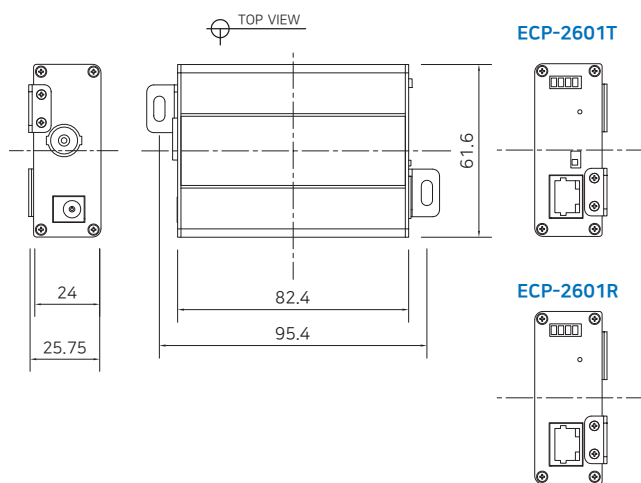
- Multi-Port devices may have different bandwidth and power current for each port depending on number of connected cameras.
- Transmission distance may vary depending on the type and quality of cable, use of power and environmental condition.
- Distance is based on RG-6 coax cable and 7 Watt IP Camera.

## ECP-2601T/R

► Premium Single Port Ethernet over Coax Transmitter / Receiver



## ▲ Dimension



## ▲ Specification

Model		ECP-2601T	ECP-2601R
Interface	Coax	1 x 75Ω BNC (Female) - Ethernet over Coax (B-LinX)	
	Ethernet	1 x RJ45 - 10/100 Base-T with Auto-detect MDIX	
Transmission Rate		95Mbps Full Duplex (270Mbps between Intercoax devices)	
Transmission Distance	Ethernet	up to 2.4Km(RG-6)	
	PoE (PoC)	up to 1.2Km (RG-6 / 7W camera)	
LED Indication	Ethernet	1 x Data-Link (Yellow)	
	EoC	1 x Join-Link (Green)	
	Power	1 x Power On (Amber)	
	PoE	1 x PoE Out (Red)	
Encryption		128-bit AES	
Power	Input	B-LinX or DC12V~57V	PoE Switch or DC12V~57V
	PoE Output	IEEE802.3af(PoE), IEEE802.3at (PoE+), Extra PoE up to 60W	PoE Not Supported PoC Only
Mechanical	Dimension	82.4(L) x 61.6(W) x 24(H)mm	
	Weight	77g	
Environment	Operating Temp	-20 ~ 60°C	
	Storage Temp	-30 ~ 80°C	
	Relative Humidity	10% ~ 90%	
Compliance	Certification	FCC, CE, KC	
	Surge Protection	IEC 61000-4-5 4kV(1.2 / 50us), 2kA(8 / 20us)	
Optional Accessories		56VDC / 1.2A External Power Supply	

## ▲ Overview

ECP-2601 is a High-Speed, long distance Ethernet & PoE extender that makes possible to transmit the Ethernet signal up to 2.4Km and PoE up to 1.2Km via Coax (or UTP, 2-wire) cables in different situations.

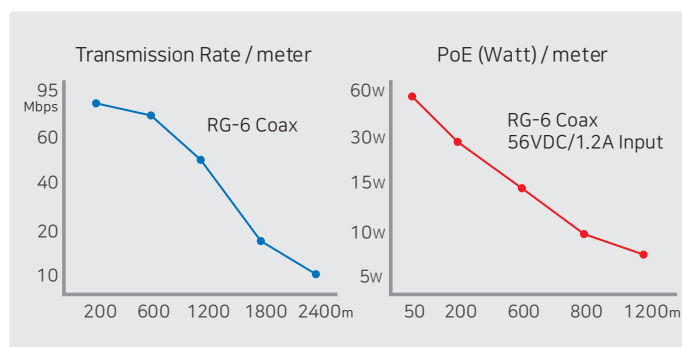
It is cost-effective and time saving solution to migrate existing analog system to IP based system since ECP-2601 supports easy installation utilizing the existing cable.

With long distance transmission feature, the device makes to overcome 100 meters distance limitation easily and reduces the construction cost significantly compared with fiber optic configuration.

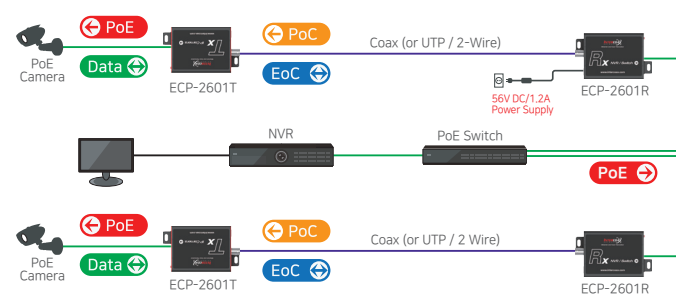
## ▲ Features

- Ethernet over Coax communication following IEEE1901 Standard
- Data + Power over Coax cable (or UTP, 2-Wire)
- Data distance up to 2.4Km
- PoE distance up to 1.2Km
- Max. 95Mbps Bandwidth (270Mbps between Intercoax 2 series models)
- 10/100 Full Duplex
- 128bit AES network encryption
- Supports Multi-connection (Daisy chain, Star, etc.)
- PoE, PoE+, Extra PoE (Max. 60W output)
- Supports UTP, Telephone (2 Pairs), 2-Wire cable communication (Using BTE Series)
- Quality LED (Data, Power, Link, PoE)
- Plug & Play
- Surge Protection
- Support PoE+ Input (25.5W) from PSE devices - ECP-2601R Only
- Slim design

## ▲ Performance chart



## ▲ Connection Diagram



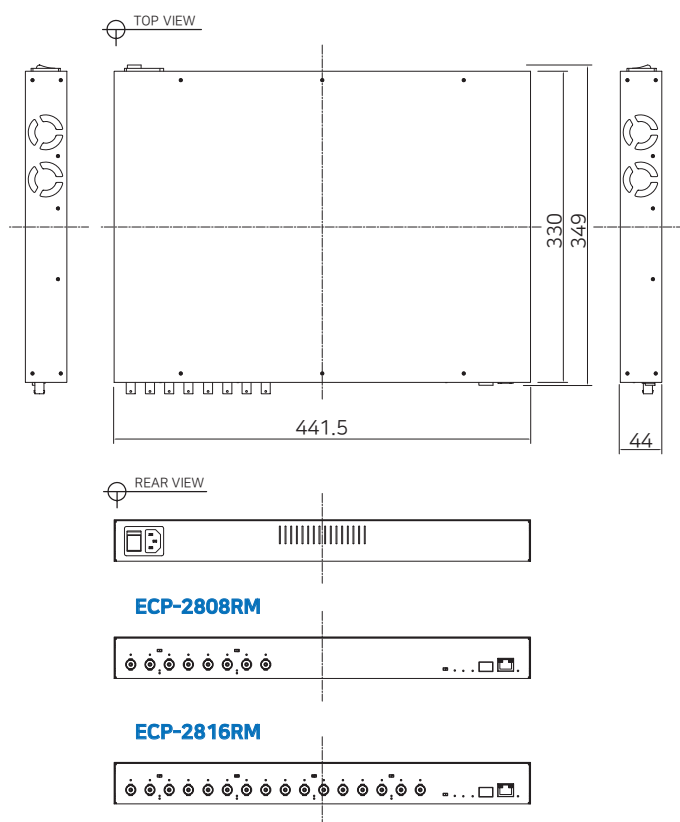
- Transmission distance may vary depending on the type and quality of cable, use of power and environmental condition.
- Distance is based on RG-6 cable and 7 Watt IP Camera.

# ECP-2808RM/2816RM

► Premium 8/16 Port Ethernet over Coax Managed Receiving Switch (NMS)



## Dimension



## Overview

The All-New Intercoax ECP-2808RM/2816RM are 19" rack mountable Managed Long Distance Ethernet and PoE over Coax Receiving Switches. ECP-2808RM/2816RM are available with 8 or 16 B-Linx(Coax) ports.

ECP-2808RM/2816RM are capable of connecting more than 8/16 ECP Transmitters even with Daisy-Chain connection and also support PoE powered devices such as IP cameras. Data rates up to 1Gbps are achievable, making these devices the ideal choice in new or legacy installations where existing coax cable is re-deployed as part of an upgrade from Analog to IP cameras.

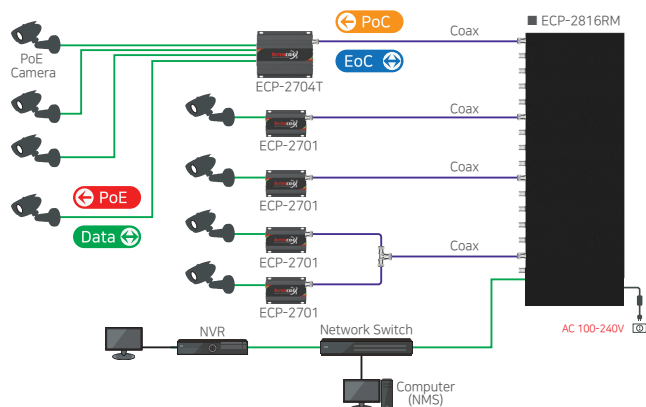
ECP-2808RM has built-in 320 Watt power supply and ECP-2816RM has built-in 640 Watt power supply.

Browser based GUI manages all connected IEEE1901-HPAV standard devices. Furthermore, the world first innovative "Intercoax ECP Manager" software allows managing multiple of ECP-2808RM /2816RM remotely from central management office.

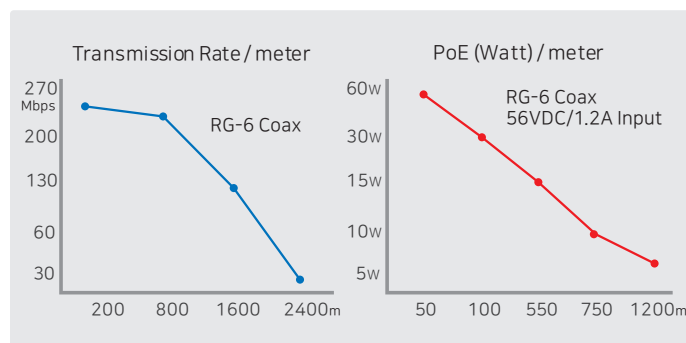
## Features

- Total management software, "Intercoax ECP Manager Full version" included
- Friendly Graphic User Interface with EasyView can easily access and monitor multiple ECP-2808RM/2816RM
- Configure Join & Unjoin, Changing joining password and power reset of remotely connected devices
- Real-time monitoring of power consumption for each port
- Multicast Setting with IGMP Query & Report Generator
- SNMP/SSH
- VLAN/QoS
- Port Locking by MAC Addresses
- Alarm LED & buzzer built-in switch and notification on ECP Manager
- Scheduled event reporting and alert reporting to designative users
- Back up & Restore of configuration
- 8/16 Port long distance EoC up to 2.4Km
- PoE/ PoE+/ Extra PoE up to 60W (PoE++) per B-Linx port
- Each port has Auto Power Short Protection. When the cable is being shorted or damaged, it won't transmit power until the cable is fixed
- B-Linx Device Detection will secure the power transmission only to B-Linx devices
- 320W / 640W Built-in Power Supply
- Built-in crosstalk cancelling technology
- B-Linx Multiple Nodes can be used (Daisy Chain, Star, Etc.) on each port
- All IEEE1901-HPAV standard EoC devices can be easily connected remotely
- 19-inch(1U) rack mountable design
- Giga-bit SFP and Copper uplink port
- Supports UTP, Telephone (2 Pairs), 2-Wire cable communication (Using BTE Series)
- Surge Protection

## Connection Diagram



## Performance chart



► The test result was conducted using ECP-2701 as transmitter.



# ECP-2808RM/2816RM

## Specification

Model		ECP-2808RM	ECP-2816RM
Interface	Coax	8 x 75Ω BNC (Female) - Ethernet over Coax (B-Linx)	16 x 75Ω BNC (Female) - Ethernet over Coax (B-Linx)
	Up-Link	1 x RJ45 - 10/100/1000 Base-T with Auto MDIX, 1 x SFP - 1000 Base-T	
B-Linx / T-Linx Transmission Rate (Ethernet over Coax/UTP)		UP to 560Mbps Full Duplex	UP to 1Gbps Full Duplex
B-Linx / T-Linx Communication Standard		IEEE1901-HPAV	
B-Linx / T-Linx Communication Modulation		OFDM	
B-Linx / T-Linx Communication Multiple Nodes (Daisy Chain)		2 remote transmitters per port recommended (Max up to 4 per port)	
ECP Manager Connectivity		Available	
IGMP		IGMP (V1/V2/V3) Snooping, IGMP Query & Report Generator	
Data Transmission Distance	Coax	Up to 2.4Km (RG6)	
Power Transmission Distance	Coax	Up to 1.2Km (RG6 / 7W)	
LED Indication	Power	1 x Blue	
	RJ45 Up-Link	1 x Green (10/100-Link) / 1 x Yellow (1000-Link)	
	SFP Up-Link	1 x Green (1000-Link)	
	Port	8 x Green	16 x Green
	Join	2 x Green	4 x Green
	Alarm	1 x Red	

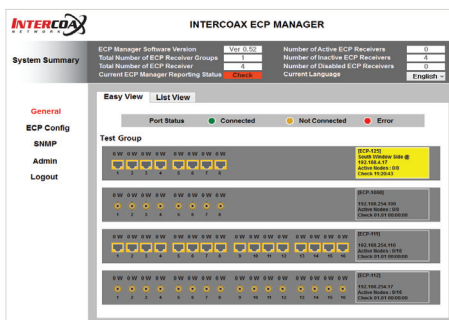
Model		ECP-2808RM	ECP-2816RM
Buzzer	Event	Buzzer / Mute	
Encryption		128-bit AES	
Power	AC Input	AC100V-240V (50Hz/60Hz), 320W / 640W	
	DC output per Port	Max DC 57V (Max. 60W per port for PoE support)	
	Port Short Protection	Auto Detection & Protection	
Smart B-Linx / T-Linx Device Detection		Detection On / Off	
Mechanical	Dimension	441.5(L) x 330(W) x 44(H)mm	441.5(L) x 330(W) x 44(H)mm
	Weight	5,160g	5,600g
Environment	Operating Temp	-10~ 60°C	
	Storage Temp	-30 ~ 80°C	
	Relative Humidity	10% ~ 80%	
Compliance	Certification	CE (including Railways Standard EN 50121-4), FCC, KC	
	Surge Protection	IEC61000-4-5 4kV(1.2 / 50us), 2kA(8/20us)	

- Multi-Port devices may have different bandwidth and power current for each port depending on number of connected cameras.
- Transmission distance may vary depending on the type and quality of cable, use of power and environmental condition.
- Distance is based on RG-6 coax cable and 7 Watt IP Camera.

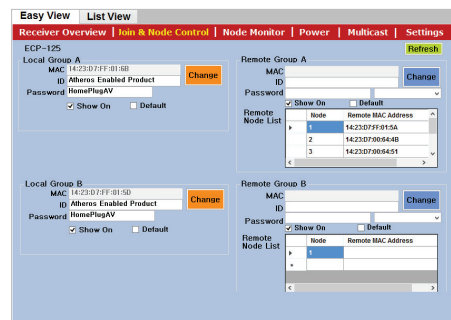
## 2808RM / 2816RM Software ► INTERCOAX ECP Manager

Professional management software for real-time monitoring, configuration and remote access.

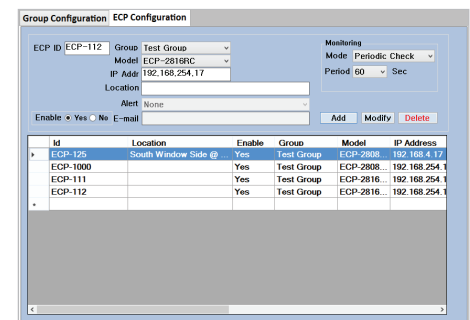
### User Friendly GUI with Multiple 2808 / 2816 Series



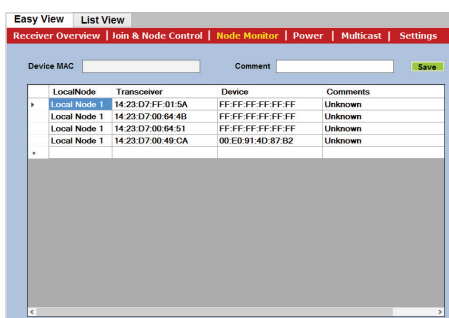
### Remote access to connected devices and software based Joining



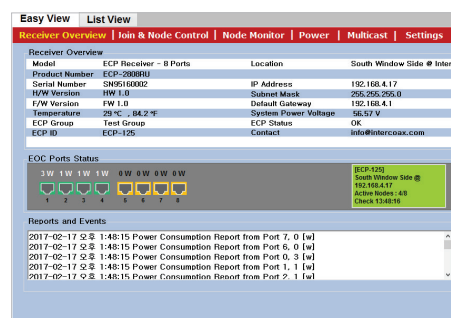
### ECP Configuration of Multiple 2808 / 2816 Series



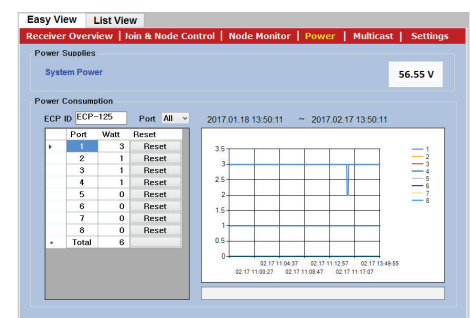
### Remote device monitoring



### Receiver Overview of selected 2808 / 2816 Series



### Power Status with history & Port reset

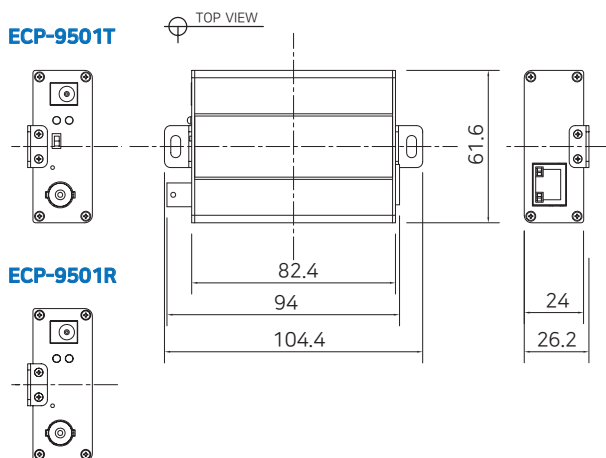


## ECP-9501T/R

► Single Port Ethernet over Coax Transmitter / Receiver (Elevator)



## ▲ Dimension



## ▲ Specification

Model		ECP-9501T	ECP-9501R
Interface	Coax	1 x 75Ω BNC (Female) - Ethernet over Coax	
	Ethernet	1 x RJ45 - 10/100 Base-T with Auto-detect MDIX	
Transmission Rate		95Mbps Full Duplex (PHY: 200Mbps)	
Transmission Distance	Ethernet	up to 1000m (RG-6)	
	PoE (PoC)	up to 1000m (RG-6 / 7W camera)	
LED Indication	Ethernet	1 x Data(Green) 1 x PoE(Yellow)	1 x Link/Act(Green) 1 x 10/100(Yellow)
	EoC	1 x BNC Join(Green)	
	Power	1 x PWR(Blue)	
Encryption		128-bit AES	
Power	Input	B-Linx or DC12V~ 57V	
	PoE Output	Support PoE (15W), PoE+ (30W), Extra PoE up to 60W	PoE Not Supported PoC Only
Mechanical	Dimension	82.4(L) x 61.6(W) x 24(H)mm	
	Weight	110g	105g
Environment	Operating Temp	-20 ~ 60°C	
	Storage Temp	-30 ~ 80°C	
	Relative Humidity	10% ~ 90%	
Compliance	Certification	FCC, CE, KC	
	Surge Protection	IEC 61000-4-5 4kV(1.2 / 50us), 2kA(8 / 20us)	
Optional Accessories		56VDC / 1.2A External Power Supply	

## ▲ Overview

ECP-9501 is a High-Speed, long distance Ethernet & PoE extender that makes possible to transmit IP data up to 1000m and PoE up to 1000m various analog cables in different situations.

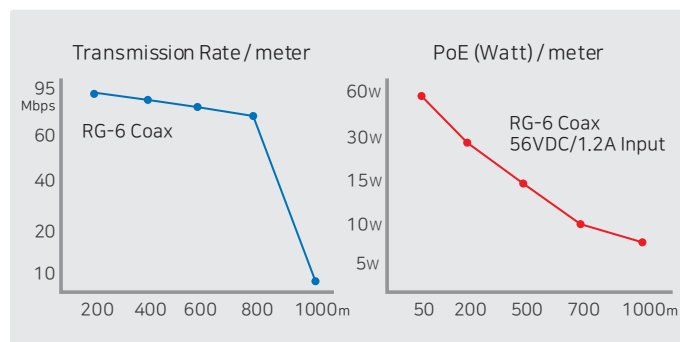
It is cost-effective and time saving solution to migrate existing analog system to IP based system since ECP-9501 supports easy installation utilizing the existing CCTV cable (Coax, UTP, 2wire).

With long distance transmission feature, the device makes to overcome 100 meters distance limitation easily and reduces the construction cost significantly compared with fiber optic configuration.

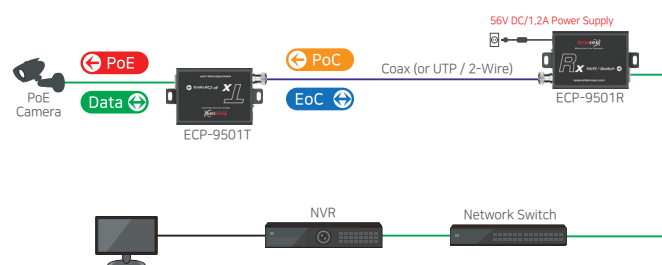
## ▲ Features

- Ethernet over coax (UTP, 2-Wire) communication following IEEE1901 Standard
- Data + Power over Coax (or UTP, 2-wire)
- Data distance up to 1000m
- PoE distance up to 1000m
- Max. 95Mbps Bandwidth
- 10/100 Full Duplex
- 128bit AES network encryption
- Supports Multi-connection (Daisy chain, Star, etc.)
- PoE, PoE+, Extra PoE (Max. 60W output) (ECP-9501T only)
- Supports UTP, Telephone (2 Pairs), 2-Wire cable communication (Using BTE Series)
- Designed for elevator application exclusively. (Possible to reuse traveling cable for elevator)
- Plug & Play
- Over Current Protection for safe power transmission.
- Surge Protection
- Slim design

## ▲ Performance chart



## ▲ Connection Diagram



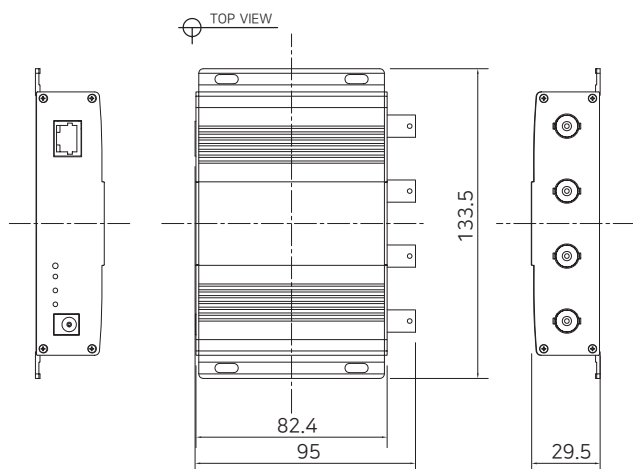
- Transmission distance may vary depending on the type and quality of cable, use of power and environmental condition.
- Distance is based on RG-6 coax cable and 7 Watt IP Camera.

# ECP-9504R

► 4 Port Ethernet over Coax Receiver



## Dimension



## Specification

Model		ECP-9504R: 4 Port Receiver
Interface	Coax	4 x 75Ω BNC (Female) - Ethernet over Coax (B-LinX)
	Ethernet	1 x RJ45 - 10/100 Base-T with Auto-detect MDIX
Transmission Rate		95Mbps Full Duplex (PHY: 200Mbps)
Transmission Distance	Ethernet	up to 1000m(RG-6)
	PoE (PoC)	up to 1000m (RG-6 / 7W camera)
LED Indication	Ethernet	1 x Data(Green)
	EoC	1 x BNC Join(Green)
	Power	1 x PWR(Blue)
Encryption		128-bit AES
Power	Input	DC12V ~ 57V
	PoC Output	up to 60W
Mechanical	Dimension	82.4(L) x 133.5(W) x 29.5(H)mm
	Weight	360g
Environment	Operating Temp	-20 ~ 60°C
	Storage Temp	-30 ~ 80°C
	Relative Humidity	10% ~ 90%
Compliance	Certification	FCC, CE, KC
	Surge Protection	IEC 61000-4-5 4kV(1.2 / 50us), 2kA(8 / 20us)
Optional Accessories		56VDC / 1.2A External Power Supply

## Overview

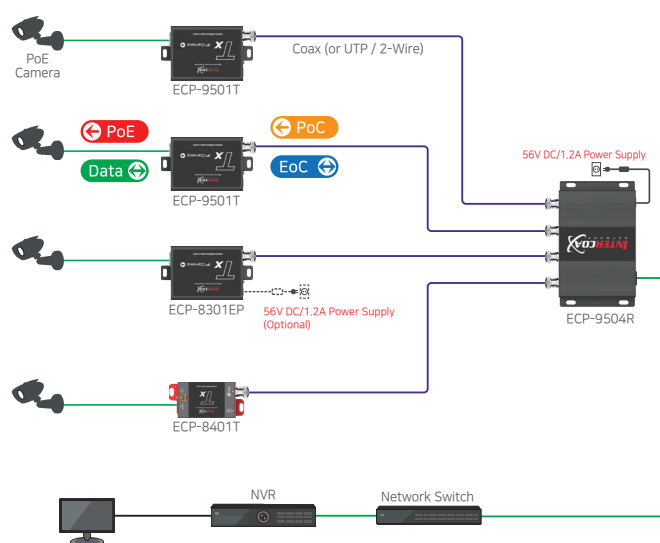
ECP-9504R is a 4 port High-Speed, long distance Ethernet & PoE receiver that receives 4 different signals from ECP-9501T and transmits IP data to network switch or NVR via RJ45 port.

It is cost-effective and time saving solution to migrate existing analog system to IP based system since ECP-9504R supports easy installation utilizing the existing CCTV cable (Coax, UTP, 2wire). With Smart Impedance Matching feature, the device maintains optimum signal level without any interference and Smart Over Current Protection (SOCP) feature makes the device to transmit power over coax safely.

## Features

- Ethernet over coax (UTP, 2-Wire) communication following IEEE1901 Standard
- Data + Power over Coax (or UTP, 2-wire)
- Data distance up to 1000m
- PoE distance up to 1000m
- Max. 95Mbps Bandwidth
- 10/100 Full Duplex
- 128bit AES network encryption
- Supports Multi-connection (Daisy chain, Star, etc.)
- Up to 60W PoC (Power over Coax) output
- Supports UTP, Telephone (2 Pairs), 2-Wire cable communication (Using BTE Series)
- Plug & Play
- Over Current Protection for safe power transmission.
- Surge Protection
- Slim design
- Compatible with EoC Transmitters such as ECP-9501T, ECP-8401T, ECP-8301EP, ECP-8301NP

## Connection Diagram



- Multi-Port devices may have different bandwidth and power current for each port depending on number of connected cameras.
- Transmission distance may vary depending on the type and quality of cable, use of power and environmental condition.
- Distance is based on RG-6 coax cable and 7 Watt IP Camera.

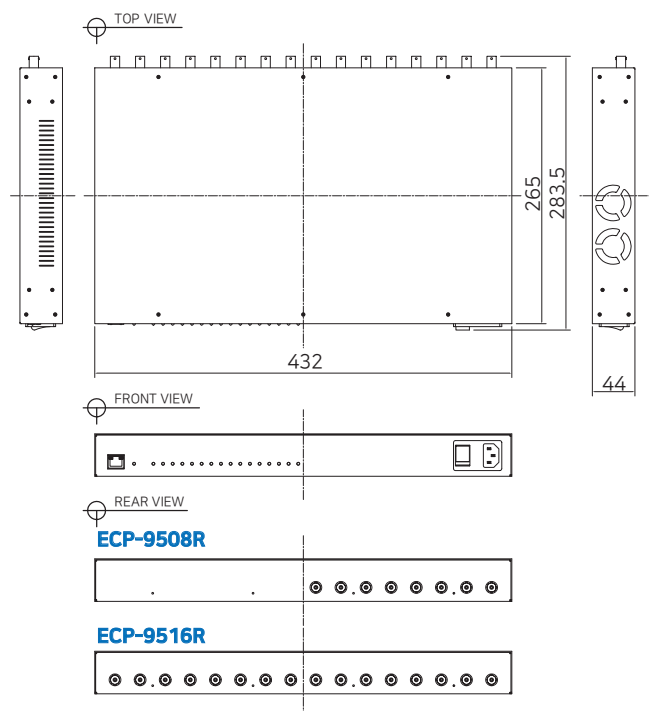


# ECP-9508R/9516R

► 8 / 16 Port Ethernet over Coax Receiver



## Dimension



## Specification

Model		ECP-9508R: 8 Port Receiver	ECP-9516R: 16 Port Receiver
Interface	Coax	8 x 75Ω BNC (Female) - EoC (B-LinX)	16 x 75Ω BNC (Female) - EoC (B-LinX)
	Ethernet	1 x RJ45 - 10/100/1000 Base-T with Auto-detect MDIX	
Transmission Rate		180Mbps Full Duplex	360Mbps Full Duplex
Transmission Distance	Ethernet	up to 1000m(RG-6)	
	PoE (PoC)	up to 1000m (RG-6 / 7W camera)	
LED Indication	Ethernet	1 x ACT(Green) / 1 x Link(Yellow)	
	Power	1 x POWER(Blue)	
	Port	8 x 1~8 Port (Green)	16 x 1~16 Port (Green)
Encryption		128-bit AES	
Power	Input	AC100V-240V (50Hz / 60Hz)	
	PoE Output	PoE Not Supported, PoC Only	
Mechanical	Dimension	432(L) x 265(W) x 44(H)mm	
	Weight	3,150g	3,700g
Environment	Operating Temp	-10~ 60°C	
	Storage Temp	-30 ~ 80°C	
	Relative Humidity	10% ~ 90%	
Compliance	Certification	FCC, CE, KC	
	Surge Protection	IEC 61000-4-5 4kV(1.2 / 50us), 2kA(8 / 20us)	

## Overview

ECP-9508R / ECP-9516R is multi-port High-Speed, long distance Ethernet & PoE unmanaged switch that receives 8 / 16 EoC Signal from ECP-9501 and transmit IP data to network switch or NVR via RJ45 port.

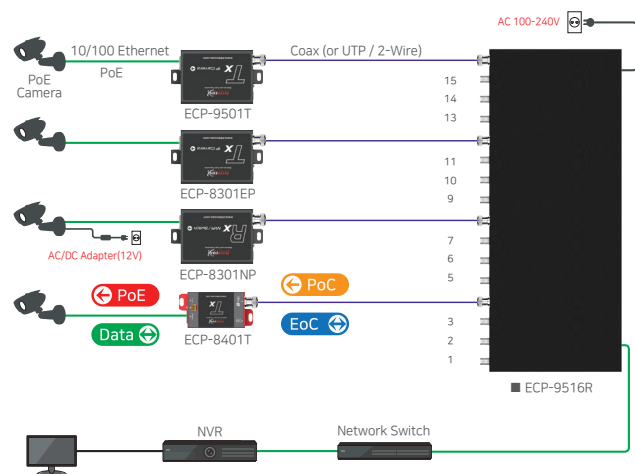
It is cost-effective and time saving solution to migrate existing analog system to IP based system since ECP-9508R / ECP-9516R supports easy installation utilizing the existing CCTV cable (Coax, UTP, 2wire).

With Smart Impedance Matching feature, the device maintains optimum signal level without any interference and Smart Over Current Protection (SOCP) feature makes the device to transmit power over coax safely.

## Features

- 19" Rack Mountable unmanaged switch
- Ethernet over coax (UTP, 2-Wire) communication following IEEE1901 Standard
- Data + Power over Coax (or UTP, 2-wire)
- Data distance up to 1000m
- PoE distance up to 1000m
- Max. 180Mbps / 360Mbps Bandwidth
- 130W / 260W Built-in Power supply
- 10/100/1000 Full Duplex
- 128bit AES network encryption
- Supports Multi-connection (Daisy chain, Star, etc.)
- Supports UTP, Telephone (2 Pairs), 2-Wire cable communication (Using BTE Series)
- Plug & Play
- Over Current Protection for safe power transmission.
- Surge Protection
- Compatible with EoC Transmitter such as ECP-9501T, ECP-8401T, ECP-8301EP, ECP-8301NP

## Connection Diagram



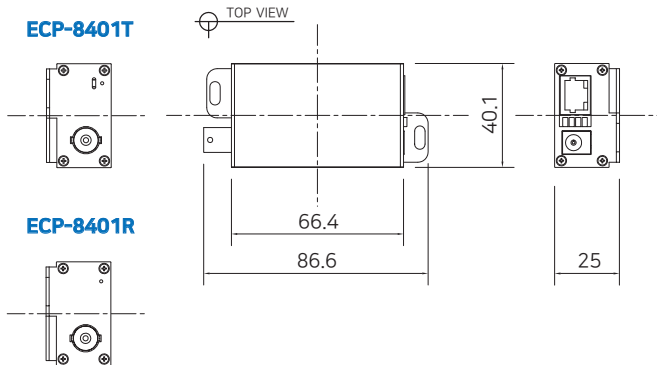
- Multi-Port devices may have different bandwidth and power current for each port depending on number of connected cameras.
- Transmission distance may vary depending on the type and quality of cable, use of power and environmental condition.
- Distance is based on RG-6 coax cable and 7 Watt IP Camera.

# ECP-8401T/R

► Single Port Ethernet over Coax Transmitter / Receiver



## Dimension



## Specification

Model		ECP-8401T	ECP-8401R
Interface	Coax	1 x 75Ω BNC (Female) - Ethernet over Coax (B-LinX)	
	Ethernet	1 x RJ45 - 10/100 Base-T with Auto-detect MDIX	
Transmission Rate		80Mbps Full Duplex (PHY: 200Mbps)	
Transmission Distance	Ethernet	up to 2.4Km(RG-6)	
	PoE (PoC)	up to 1.2Km (RG-6 / 7W camera)	
LED Indication	Ethernet	1 x PoE Link(Yellow)	
	EoC	1 x Power Link(Green)	
	Power	1 x Power On(Amber)	
	PoE	1 x PoE Output(Red)	1 x PoE Input(Red)
Encryption		128-bit AES	
Power	Input	B-LinX or DC12V~57V	
	PoE Output	IEEE802.3af(PoE), IEEE802.3at (PoE+), Extra PoE up to 60W	PoE Not Supported PoC Only
	PoE Input	Not Supported	Up to 25.5W (PD)
Mechanical	Dimension	66.4(L) x 40.1(W) x 25(H)mm	
	Weight	78g	
Environment	Operating Temp	-10 ~ 60°C	
	Storage Temp	-30 ~ 80°C	
	Relative Humidity	10% ~ 90%	
Compliance	Certification	FCC, CE, KC	
	Surge Protection	IEC 61000-4-5 4kV(1.2 / 50us), 2kA(8 / 20us)	
Optional Accessories		56VDC / 1.2A External Power Supply	

## Overview

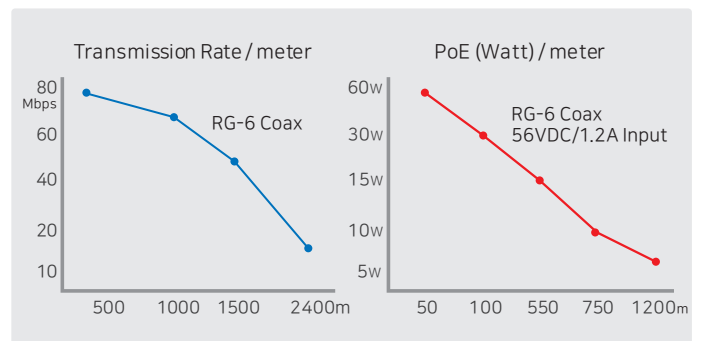
ECP-8401 is a High-Speed, long distance Ethernet & PoE extender that makes possible to transmit IP data up to 2.4Km and PoE up to 1.2Km through various analog cables in different situations.

It is cost-effective and time saving solution to migrate existing analog system to IP based system since ECP-8401 supports easy installation utilizing the existing CCTV cable (Coax, UTP, 2wire). With long distance transmission feature, the device makes to overcome 100 meters distance limitation easily and reduces the construction cost significantly compared with fiber optic configuration.

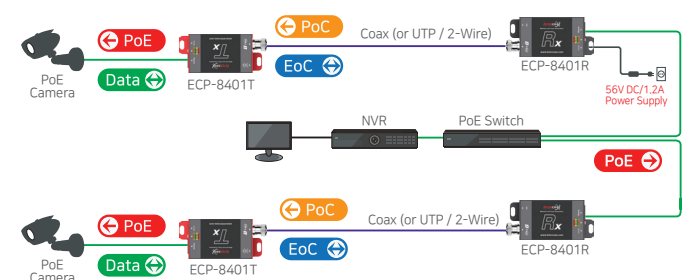
## Features

- Ethernet over coax (UTP, 2-Wire) communication following IEEE1901 Standard
- Data + Power over Coax (or UTP, 2-wire)
- Data distance up to 2.4Km
- PoE distance up to 1.2Km
- Max. 80Mbps Bandwidth
- 10/100 Full Duplex
- 128bit AES network encryption
- Supports Multi-connection (Daisy chain, Star, etc.)
- PoE, PoE+, Extra PoE (Max. 60W output) (ECP-8401T only)
- PoE ON/OFF Switch - ECP-8401T model only
- Supports UTP, Telephone (2 Pairs), 2-Wire cable communication (Using BTE Series)
- Quality LED
- Plug & Play
- Over Current Protection for safe power transmission.
- Surge Protection
- Support PoE+ Input (25.5W) from PoE Switch - ECP-8401R Only
- Ultra-Slim Design

## Performance chart



## Connection Diagram



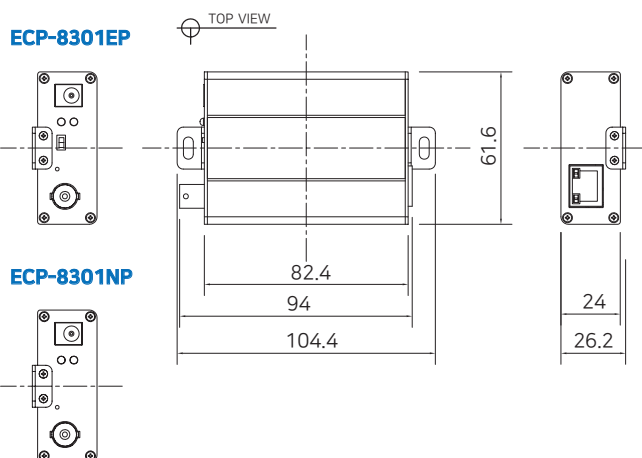
- Transmission distance may vary depending on the type and quality of cable, use of power and environmental condition.
- Distance is based on RG-6 coax cable and 7 Watt IP Camera.

## ECP-8301EP/NP

► Single Port Ethernet over Coax Transmitter / Receiver



## Dimension



## Specification

Model		ECP-8301EP	ECP-8301NP
Interface	Coax	1 x 75Ω BNC (Female) - EoC (B-LinX)	
	Ethernet	1 x RJ45 - 10/100 Base-T with Auto-detect MDIX	
Transmission Rate		80Mbps Full Duplex (PHY: 200Mbps)	
Transmission Distance	Ethernet	up to 2.4Km (RG-6)	
	PoE (PoC)	up to 1.2Km (RG-6 / 7W camera)	
LED Indication	Ethernet	1 x Data(Green) / 1 x PoE(Yellow)	
	EoC	1 x BNC Join(Green)	
	Power	1 x PWR(Blue)	
Encryption		128-bit AES	
Power	Input	B-Linx or DC12V~ 57V	
	PoE Output	Support PoE (15W) PoE+ (30W) Extra PoE up to 60W	PoE Not Supported PoC Only
Mechanical	Dimension	82.4(L) x 61.6(W) x 24(H)mm	
	Weight	103g	91g
Environment	Operating Temp	-20 ~ 60°C	
	Storage Temp	-30 ~ 80°C	
	Relative Humidity	10% ~ 90%	
Compliance	Certification	FCC, CE, KC	
	Surge Protection	IEC 61000-4-5 4kV(1.2 / 50us), 2kA(8 / 20us)	
Optional Accessories		56VDC / 1.2A External Power Supply	

## Overview

ECP-8301 is a High-Speed, long distance Ethernet & PoE extender that makes possible to transmit IP data up to 2.4Km and PoE up to 1.2Km through various analog cables in different situations.

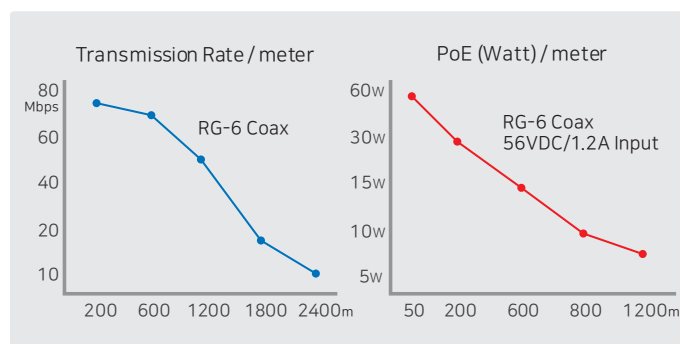
It is cost-effective and time saving solution to migrate existing analog system to IP based system since ECP-8301 supports easy installation utilizing the existing CCTV cable (Coax, UTP, 2wire).

With long distance transmission feature, the device makes to overcome 100 meters distance limitation easily and reduces the construction cost significantly compared with fiber optic configuration.

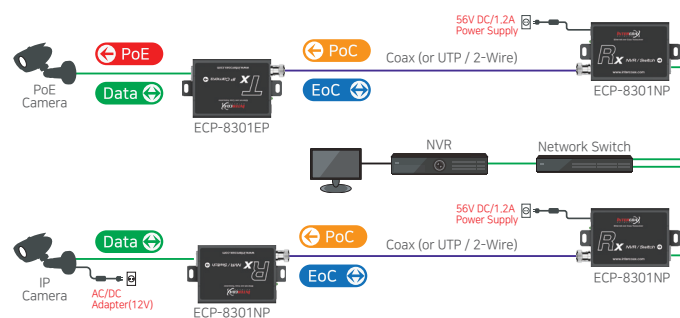
## Features

- Ethernet over coax (UTP, 2-Wire) communication following IEEE1901 Standard
- Data + Power over Coax (or UTP, 2-wire)
- Data distance up to 2.4Km
- PoE distance up to 1.2Km
- Max. 80Mbps Bandwidth
- 10/100 Full Duplex
- 128bit AES network encryption
- Supports Multi-connection (Daisy chain, Star, etc.)
- PoE, PoE+, Extra PoE (Max. 60W output / ECP-8301EP only)
- PoE ON/OFF Switch (ECP-8301EP only)
- Supports UTP, Telephone (2 Pairs), 2-Wire cable communication (Using BTE Series)
- Plug & Play
- Over Current Protection for safe power transmission.
- Surge Protection

## Performance chart



## Connection Diagram



- Transmission distance may vary depending on the type and quality of cable, use of power and environmental condition.
- Distance is based on RG-6 coax cable and 7 Watt IP Camera.

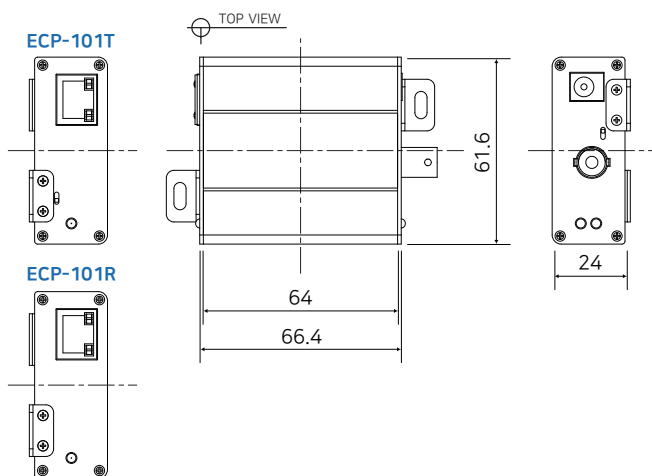


# ECP-101T/R

► Single Port Ethernet over Coax Transmitter / Receiver (Multicast)



## Dimension



## Specification

Model		ECP-101T	ECP-101R
Interface	Coax	1 x 75Ω BNC (Female) - Ethernet over Coax (B-LinX)	
	Ethernet	1x RJ45 - 10/100 Base-T with Manual selection	
Transmission Rate		10/100Mbps Full Duplex	
Transmission Distance	Ethernet	up to 700 m (RG-6)	
	PoE (PoC)	up to 700 m (RG-6 / 15W output)	
LED Indication	Ethernet	1 x Link / Act (Green) / 1 x PoE (Green)	
	EoC	1 x Link (Blue) / 1 x Act (Green)	
	Power	1 x Power On (Green)	
Power	Input	B-LinX or DC48V~57V	
	PoE Output	IEEE802.3af (PoE), IEEE802.3at (PoE+), Extra PoE up to 60W	PoE Not Supported PoC Only
	PoE Input	Not Supported	Up to 25.5W (PD)
Mechanical	Dimension	66.4(L) x 61.6(W) x 24(H)mm	
	Weight	77g	
Environment	Operating Temp	-20 ~ 60°C	
	Storage Temp	-30 ~ 80°C	
	Relative Humidity	10% ~ 90%	
Compliance	Certification	FCC, CE, KC	
	Surge Protection	IEC 61000-4-5 4kV(1.2 / 50us), 2kA(8 / 20us)	
Optional Accessories		56VDC / 1.2A External Power Supply	

## Overview

ECP-101 Series are High-Speed, long distance Ethernet & PoE extender that makes possible to transmit the Ethernet signal and PoE up to 600m through Coax cables in different situations.

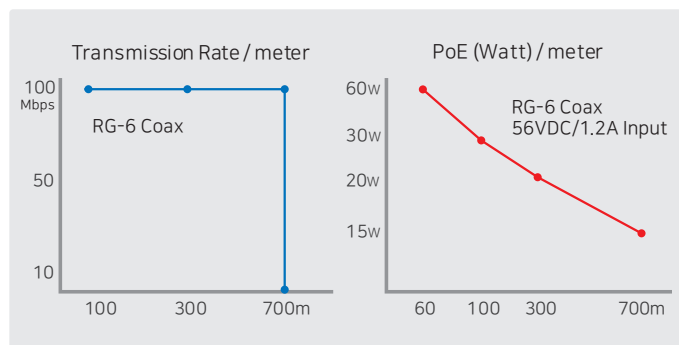
It is cost-effective and time saving solution to migrate existing analog system to IP based system since ECP-101 supports easy installation utilizing the existing Coax cable.

With long distance transmission feature, the device makes to overcome 100 meters distance limitation easily and reduces the construction cost significantly compared with fiber optic configuration.

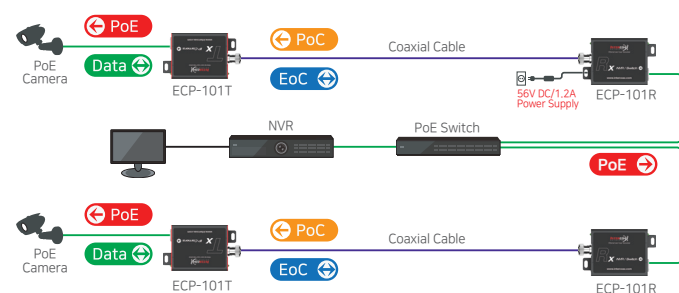
## Features

- Ethernet Extension over existing coaxial cable
- Data + Power over Coaxial cable
- Data and PoE distance up to 700m
- Max. 100Mbps Bandwidth
- 10/100 Full Duplex
- Multicast supported
- PoE, PoE+, Extra PoE (Max. 60W output) (ECP-101T only)
- PoE ON/OFF Switch (ECP-101T only)
- Quality LED (Data & Power)
- Plug & Play
- Surge Protection
- Support PoE+ Input (25.5W) from PSE devices - ECP-101R Only
- Compact design

## Performance chart



## Connection Diagram



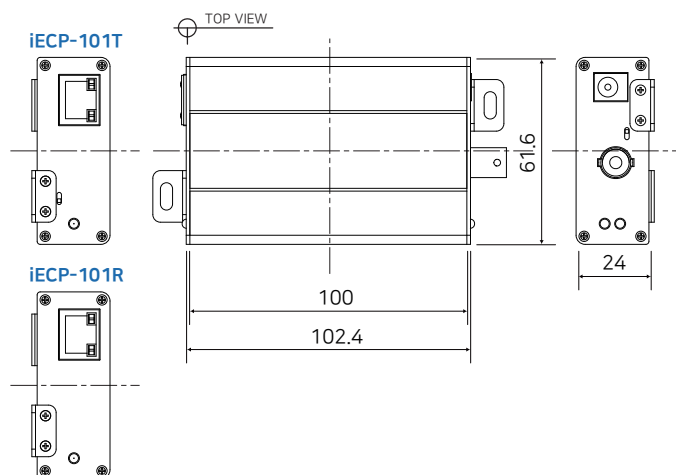
- Transmission distance may vary depending on the type and quality of cable, use of power and environmental condition.
- Distance is based on RG-6 coax cable and 7 Watt IP Camera.

## iECP-101T/R

► Premium Single Port Ethernet Over Coax Transmitter / Receiver with Network Diagnostic Feature (Multicast)



## Dimension



## Specification

Model		iECP-101T	iECP-101R
Interface	Coax	1 x 75Ω BNC (Female) - Ethernet over Coax (B-LinX)	
	Ethernet	1x RJ45 - 10/100 Base-T with Manual selection	
Transmission Rate		10/100Mbps Full Duplex	
Transmission Distance	Ethernet	up to 700 m (RG-6)	
	PoE (PoC)	up to 700 m (RG-6 / 15W output)	
LED Indication	Ethernet	1 x Link / Act (Green) / 1 x PoE (Green)	
	EoC	1 x Link (Blue) / 1 x Act (Green)	
	Power	1 x Power On (Green)	
Power	Input	B-LinX or DC48V~57V	
	PoE Output	IEEE802.3af (PoE), IEEE802.3at (PoE+), Extra PoE up to 60W	PoE Not Supported PoC Only
	PoE Input	Not Supported	Up to 25.5W (PD)
Mechanical	Dimension	102.4(L) x 61.6(W) x 24(H)mm	
	Weight	124g	
Environment	Operating Temp	-20 ~ 60°C	
	Storage Temp	-30 ~ 80°C	
	Relative Humidity	10% ~ 90%	
Compliance	Certification	FCC, CE, KC	
	Surge Protection	IEC 61000-4-5 4kV(1.2 / 50us), 2kA(8 / 20us)	
Optional Accessories		56VDC / 1.2A External Power Supply	

## Overview

iECP-101 Series are High-Speed, long distance Ethernet & PoE extender that makes possible to transmit the Ethernet signal and PoE up to 700m through Coax cables in different situations. It is cost-effective and time saving solution to migrate existing analog system to IP based system since iECP-101 supports easy installation utilizing the existing Coax cable.

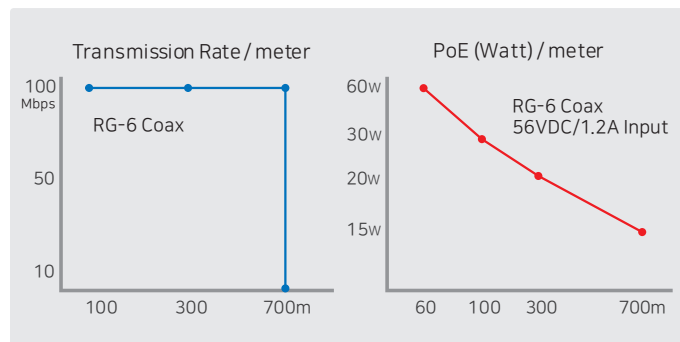
With long distance transmission feature, the device makes to overcome 100 meters distance limitation easily and reduces the construction cost significantly compared with fiber optic configuration.

Also, iECP-101 supports network diagnostic function by IP address setting with a separate iECP manager software.

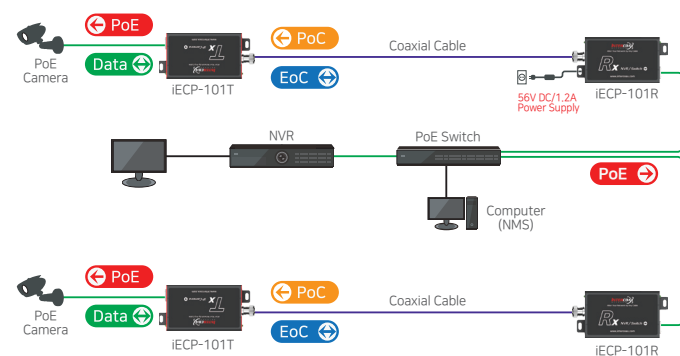
## Features

- Ethernet Extension over existing coaxial cable Data + Power over Coaxial cable.
- Data and PoE distance up to 700m
- Max. 100Mbps Bandwidth
- 10/100 Full Duplex
- Multicast supported
- PoE, PoE+, Extra PoE (Max. 60W output) (iECP-101T only)
- PoE ON/OFF Switch (iECP-101T only)
- Surge Protection
- Network Diagnostic feature: Connection status of the devices, PoE Power Input / Output Status, Operating Voltage / Current status, Transmission Speed.
- Support PoE+ Input (25.5W) from PSE devices - iECP-101R Only

## Performance chart



## Connection Diagram



- Transmission distance may vary depending on the type and quality of cable, use of power and environmental condition.
- Distance is based on RG-6 coax cable and 7 Watt IP Camera.

## iECP-101T/R

## iECP-101 Software ► INTERCOAX iECP Manager

Professional management software for device IP setting, real-time monitoring and remote access.

## Create Device Group

## Receiver Registration

## Transmitter Registration

## Connection Status between Devices

## Connection Status of the Receiver

## Connection Status of the Transmitter

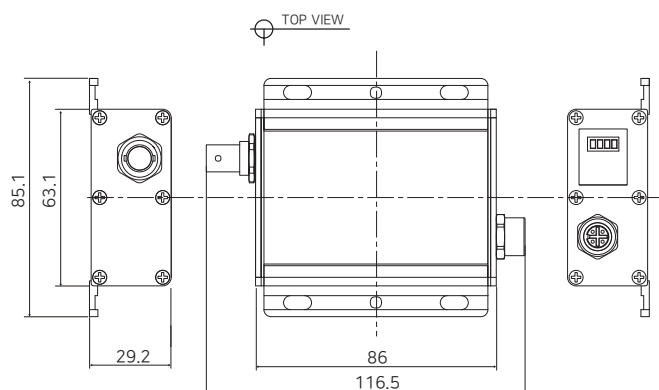
## MCP-501T/R / MCP-501TL/RL

► Industrial Single Port Ethernet/PoE over coax transmitter / receiver with M12 Interface

## MCP-501T/R



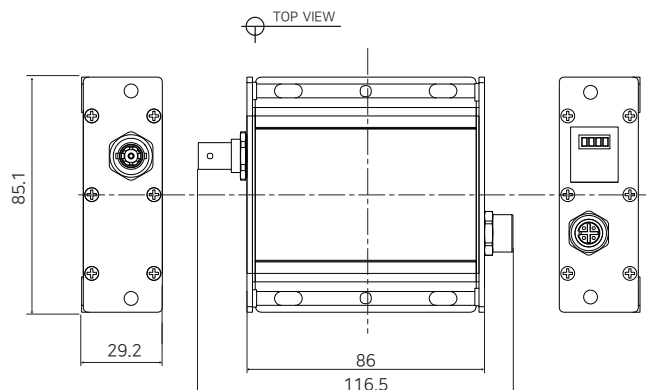
## ▲ Dimension



## MCP-501TL/RL



## ▲ Dimension



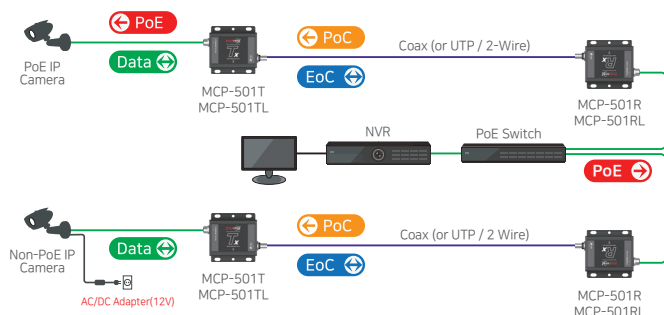
## ▲ Overview

MCP-501 is Ethernet / PoE over Coax converter that transmits the network data and PoE power over coaxial cable simultaneously. This device is cost-effective and time saving solution to migrate existing analog system to IP based system utilizing the existing coaxial and M12 cable infrastructure. Also, MCP-501 is an industrial product made in accordance with the IP65 standard of waterproofing and railway standards.

## ▲ Features

- Long range Ethernet over Coax communication following IEEE1901 Standard
- Network data and PoE over Coax (PoC, PoE)
- Max. 95Mbps Bandwidth (Max. 270Mbps between MCP-501)
- 10/100 Full Duplex
- M12 4 pin standard interface
- IEEE802.3 at/af standard PD/PSE
- [Reliability based on railway certification standards and industrial environments](#)
- [IP65 water resistance](#)

## ▲ Connection Diagram



## ▲ Specification

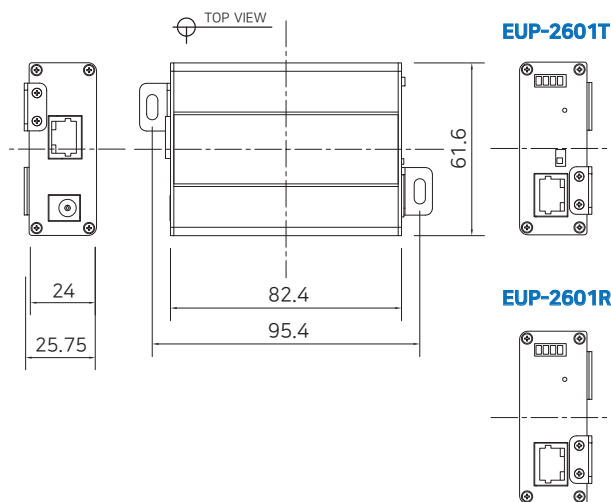
Model		MCP-501T / TL	MCP-501R / RL
Interface	Coax	1 x 75Ω BNC (Female) - Ethernet over Coax (B-Linx)	
	M12	1 x M12 - 10/100 Base-T (Female, front lock)	
Transmission Rate		95Mbps Full Duplex / Ethernet (270Mbps between Intercoax devices / B-Linx)	
Transmission Distance	Ethernet	up to 1.2Km (RG-6)	
	PoE (PoC)	up to 1.2Km (7W camera / RG-6)	
LED Indication	Ethernet	1 x Data-Link (Yellow)	
	EoC	1 x Join-Link (Green)	
	Power	1 x Power On (Red)	
	PoE	1 x PoE Out (amber)	
Encryption		128-bit AES	
Power	Input	BNC (PoC / B-Linx)	M12 (PD / IEEE802.3at_CL4) [from PoE Switch or NVR]
	Output	M12 (PSE / IEEE802.3 at/af) [to PoE Camera]	BNC (PoC / B-Linx)
	Range	DC48V - 56V	
Mechanical	Dimension	86(L) x 85.1(W) x 29.2(H)mm Gasket (for IP Level), add option earth point (M4 screw)	
	Weight	MCP-501TL/RL : 169g	MCP-501T/R : 166g
Environment	Operating Temp	-25°C - 70°C	
	Storage Temp	-40°C - 85°C	
	Relative Humidity	10% ~ 90%	
	IP Level	IP65	
Compliance	Certification	FCC, CE, KC	
	Protection	EN61000-4, EN50155	

## EUP-2601T/R

► Premium Single Port Ethernet over UTP Transmitter / Receiver



## ▲ Dimension



## ▲ Specification

Model		EUP-2601T	EUP-2601R
Interface	UTP	1 x RJ45 - Ethernet over UTP (T-LinX)	
	Ethernet	1 x RJ45 - 10/100 Base-T with Auto-detect MDIX	
Transmission Rate		95Mbps Full Duplex (270Mbps between Intercoax 2 series models)	
Transmission Distance	Ethernet	up to 1.2 Km (Cat.5e)	
	PoE (PoC)	up to 1.2 Km (Cat.5e / 57VDC Input / 7W camera)	
LED Indication	Ethernet	1 x Data-Link (Yellow)	
	Data over 2-Wire	1 x Join-Link (Green)	
	Power	1 x Power On (Amber)	
	PoE Output	1 x PoE Out (Red)	
Encryption		128-bit AES	
Power	Input	T-LinX or DC12V~57V	PoE Switch or DC48V~57V
	PoE Output	IEEE802.3af(PoE), IEEE802.3at (PoE+), Extra PoE up to 60W	PoE Not Supported Power Over UTP Only
Mechanical	Dimension	82.4(L) x 61.6(W) x 24(H)mm	
	Weight	102g	
Environment	Operating Temp	-20 ~ 60°C	
	Storage Temp	-30 ~ 80°C	
	Relative Humidity	10% ~ 90%	
Compliance	Certification	FCC, CE, KC	
	Surge Protection	IEC 61000-4-5 4kV(1.2 / 50us), 2kA(8 / 20us)	
Optional Accessories		56VDC / 1.2A External Power Supply	

## ▲ Overview

EUP-2601 is a High-Speed, long distance Ethernet & PoE extender that makes possible to transmit the Ethernet signal up to 1.2Km and PoE up to 1.2Km via UTP cables in different situations.

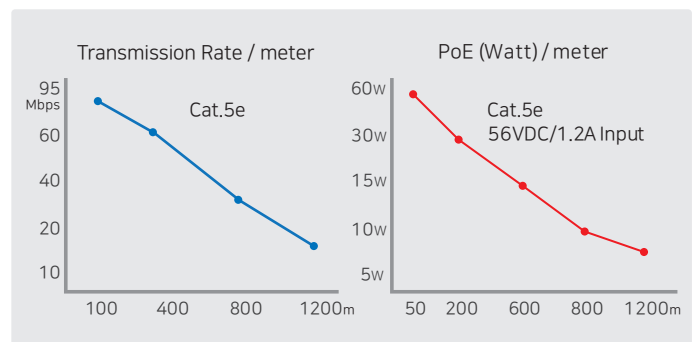
It is cost-effective and time saving solution to migrate existing analog system to IP based system since EUP-2601 supports easy installation utilizing the existing UTP cable.

With long distance transmission feature, the device makes to overcome 100 meters distance limitation easily and reduces the construction cost significantly compared with fiber optic configuration.

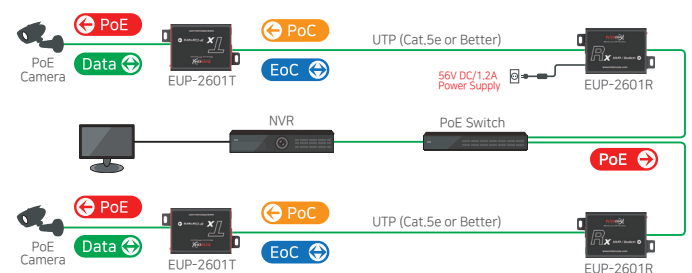
## ▲ Features

- Ethernet over UTP communication following IEEE1901 Standard
- Data + Power over UTP cable (Cat.5e or better)
- Data distance up to 1.2Km
- PoE distance up to 1.2Km
- Max. 95Mbps Bandwidth (270Mbps between Intercoax models)
- 10/100 Base-T with Auto-detect MDIX
- 128bit AES network encryption
- Supports Multi-connection (Daisy chain, Star, etc.)
- PoE, PoE+, Extra PoE (Max. 60W output) (EUP-2601T only)
- PoE ON/OFF Switch (EUP-2601T only)
- Quality LED (Data, Power, Link, PoE)
- Plug & Play
- Surge Protection
- Support PoE+ Input (25.5W) from PSE devices - EUP-2601R Only
- Slim design

## ▲ Performance chart



## ▲ Connection Diagram



- Transmission distance may vary depending on the type and quality of cable, use of power and environmental condition.
- Distance is based on Cat.5e cable and 7 Watt IP Camera.



# EUP-2808RM/2816RM

► Premium 8/16 Port Ethernet over UTP Managed Receiving Switch (NMS)



## ▲ Overview

The All-New Intercoax EUP-2808RM/2816RM are 19" rack mountable Managed Long Distance Ethernet and PoE over UTP Receiving Switches.

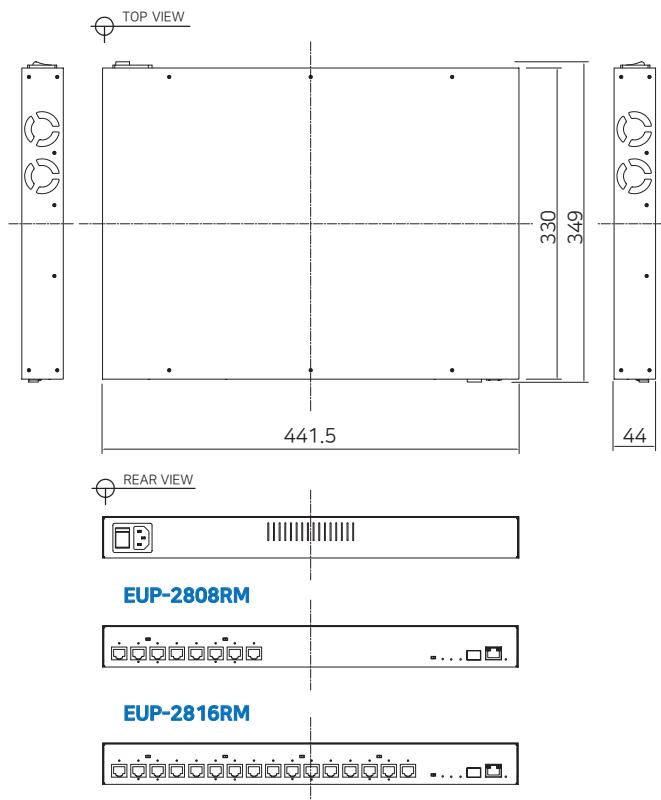
EUP-2808RM/2816RM are available with 8 or 16 T-Linx(UTP) ports.

EUP-2808RM/2816RM are capable of connecting more than 8/16 EUP Transmitters (or use ECP Transmitters with BTE-02) even with Daisy-Chain connection and also support PoE powered devices such as IP cameras.

Data rates up to 1Gbps are achievable, making these devices the ideal choice in new or legacy installations where existing UTP cable is re-deployed as part of an upgrade from Analog to IP cameras.

EUP-2808RM has built-in 320 Watt power supply and EUP-2816RM has built-in 640 Watt power supply. PoE up to 60W per port is available. Browser based GUI manages all connected IEEE1901-HPAV standard devices. Furthermore, the world first innovative "Intercoax ECP Manager" software allows managing multiple of EUP-2808RM /2816RM remotely from central management office.

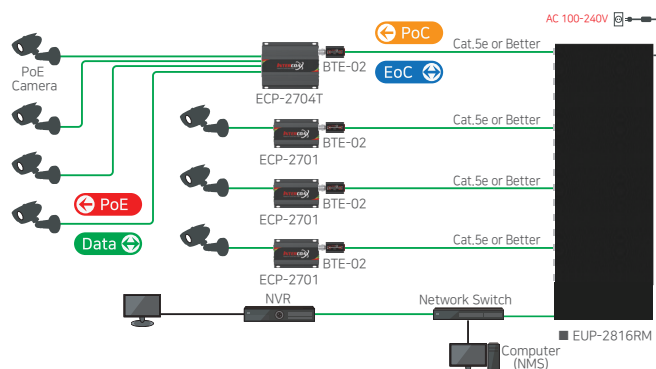
## ▲ Dimension



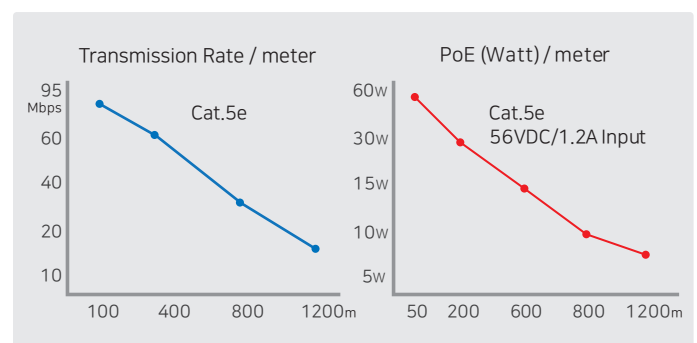
## ▲ Features

- Total management software, "Intercoax ECP Manager Full version" included
- Friendly Graphic User Interface with EasyView can easily access and monitor multiple EUP-2808RM/2816RM
- Configure Join & Unjoin, Changing joining password and power reset of remotely connected devices
- Real-time monitoring of power consumption for each port
- Multicast Setting with IGMP Query & Report Generator
- SNMP/SSH
- VLAN/QoS
- Port Locking by MAC Addresses
- Alarm LED & buzzer built-in switch and notification on ECP Manager
- Scheduled event reporting and alert reporting to designative users
- Back up & Restore of configuration
- 8/16 Port long distance up to 1.2Km
- PoE/ PoE+/ Extra PoE up to 60W (PoE++) per T-Linx port
- Each port has Auto Power Short Protection. When the cable is being shorted or damaged, it won't transmit power until the cable is fixed
- T-Linx Device Detection will secure the power transmission only to T-Linx devices
- 320W / 640W Built-in Power Supply
- Built-in crosstalk cancelling technology
- T-Linx Multiple Nodes can be used (Daisy Chain, Star, Etc.) on each port
- All IEEE1901-HPAV standard EoC devices can be easily connected remotely
- 19-inch(1U) rack mountable design
- Giga-bit SFP and Copper uplink port
- Supports UTP, Telephone (2 Pairs), 2-Wire cable communication (Using BTE Series)
- Surge Protection

## ▲ Connection Diagram



## ▲ Performance chart



## EUP-2808RM/2816RM

## Specification

Model		EUP-2808RM	EUP-2816RM
Interface	UTP	8 x 100Ω RJ45 (Female) - Ethernet over UTP (T-LinX)	16 x 100Ω RJ45 (Female) - Ethernet over UTP (T-LinX)
	Up-Link	1 x RJ45 - 10/100/1000 Base-T with Auto MDIX, 1 x SFP - 1000 Base-T	
T-LinX Transmission Rate (Ethernet over UTP)		UP to 560Mbps Full Duplex	UP to 1Gbps Full Duplex
T-LinX Communication Standard		IEEE1901-HPAV	
T-LinX Communication Modulation		OFDM	
T-LinX Communication Multiple Nodes (Daisy Chain)		2 remote transmitters per port recommended (Max up to 4 per port)	
ECP Manager Connectivity		Available	
IGMP		IGMP (V1/V2/V3) Snooping, IGMP Query & Report Generator	
Data Transmission Distance	UTP	Up to 1.2Km (Cat.5e)	
	Power	Up to 1.5Km (Cat.5e / 7W)	
LED Indication	Power	1 x Blue	
	RJ45 Up-Link	1 x Green (10/100-Link) / 1 x Yellow (1000-Link)	
	SFP Up-Link	1 x Green (1000-Link)	
	Port	8 x Green	16 x Green
	Join	2 x Green	4 x Green
	Alarm	Red	

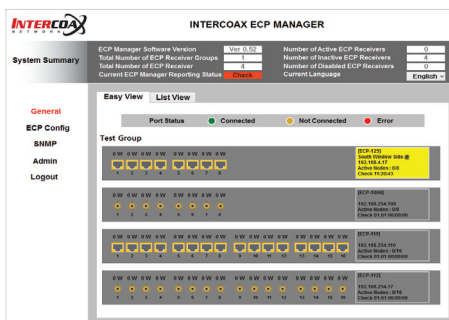
Model		EUP-2808RM	EUP-2816RM
Buzzer	Event	Buzzer / Mute	
Encryption		128-bit AES	
Power	AC Input	AC100V-240V (50Hz/60Hz), 320W / 640W (Redundancy power option)	
	DC output per Port	Max DC 57V (Max. 60W per port for PoE support)	
	Port Short Protection	Auto Detection & Protection	
Smart T-LinX Device Detection		Detection On / Off	
Mechanical	Dimension	441.5(L) x 330(W) x 44(H)mm	441.5(L) x 330(W) x 44(H)mm
	Weight	5,110g	5,540g
Environment	Operating Temp	-10 ~ 60°C	
	Storage Temp	-30 ~ 80°C	
	Relative Humidity	10% ~ 80%	
Compliance	Certification	CE (including Railways Standard EN 50121-4), FCC, KC	
	Surge Protection	IEC61000-4-5 4kV(1.2 / 50us), 2kA(8/20us)	

- Multi-Port devices may have different bandwidth and power current for each port depending on number of connected cameras.
- Transmission distance may vary depending on the type and quality of cable, use of power and environmental condition.
- Distance is based on Cat.5e cable and 7 Watt IP Camera.

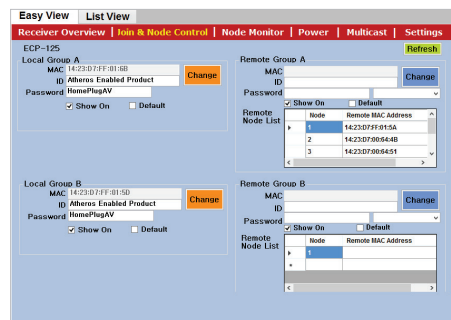
## 2808RM / 2816RM Software ► INTERCOAX ECP Manager

Professional management software for real-time monitoring, configuration and remote access.

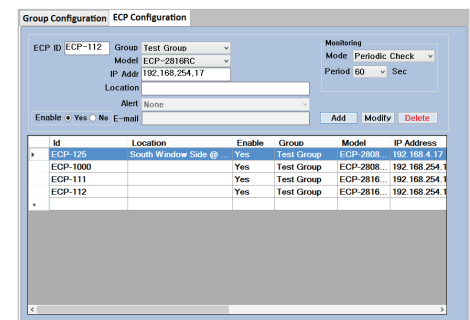
## User Friendly GUI with Multiple 2808 / 2816 Series



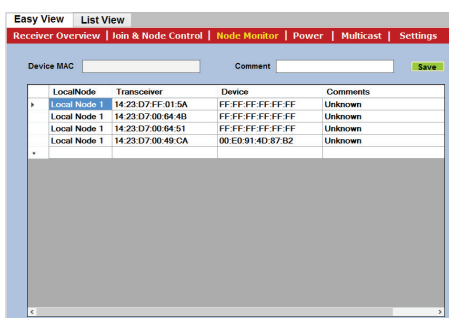
## Remote access to connected devices and software based Joining



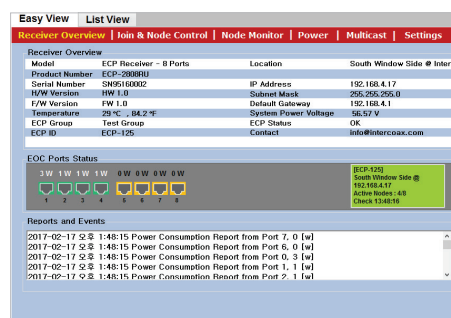
## ECP Configuration of Multiple 2808 / 2816 Series



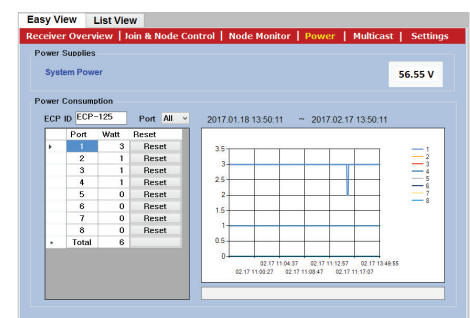
## Remote device monitoring



## Receiver Overview of selected 2808 / 2816 Series



## Power Status with history &amp; Port reset

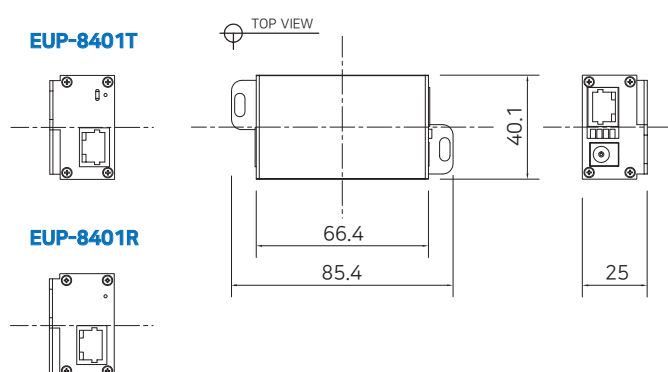


## EUP-8401T/R

► Single Port Ethernet over UTP Transmitter / Receiver



## ▲ Dimension



## ▲ Specification

Model		EUP-8401T	EUP-8401R
Interface	EoC Signal	1 x RJ45 - Ethernet over Coax (T-LinX)	
	Ethernet	1 x RJ45 - 10/100/1000 Base-T with Auto-detect MDIX	
Transmission Rate		80Mbps Full Duplex (PHY: 200Mbps)	
Transmission Distance	Ethernet	up to 1.2Km (Cat.5 / Cat.5e)	
	PoE (PoC)	up to 1.2Km (Cat.5e / 7W camera)	
LED Indication	Ethernet	1 x Ethernet Link (Yellow)	
	EoC	1 x Join (Green)	
	Power	1 x Power On (Amber)	
	PoE	1 x PoE Output (Red)	1 x PoE Input (Red)
Encryption		128-bit AES	
Power	Input	T-LinX or DC12V~57V	PoE Switch or DC12V~57V
	PoE Output	Support PoE (15W), PoE+ (30W), Extra PoE up to 60W	PoE Not Supported PoC Only
	PoE Input	Not Supported	Up to 25.5W (PD)
Mechanical	Dimension	66.4(L) x 40.1(W) x 25(H)mm	
	Weight	78g	
Environment	Operating Temp	-10 ~ 60°C	
	Storage Temp	-40 ~ 80°C	
	Relative Humidity	10% ~ 90%	
Compliance	Certification	FCC, CE, KC	
	Surge Protection	IEC 61000-4-5 4kV(1.2 / 50us), 2kA(8 / 20us)	
Optional Accessories		56VDC / 1.2A External Power Supply	

## ▲ Overview

EUP-8401 is a High-Speed, long distance Ethernet & PoE extender that makes possible to transmit the Ethernet signal up to 1.2Km and PoE up to 1.2Km via UTP cables in different situations.

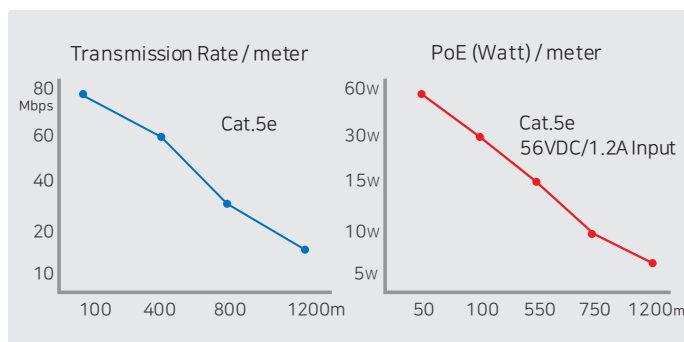
It is cost-effective and time saving solution to migrate existing analog system to IP based system since EUP-8401 supports easy installation utilizing the existing UTP cable.

With long distance transmission feature, the device makes to overcome 100 meters distance limitation easily and reduces the construction cost significantly compared with fiber optic configuration.

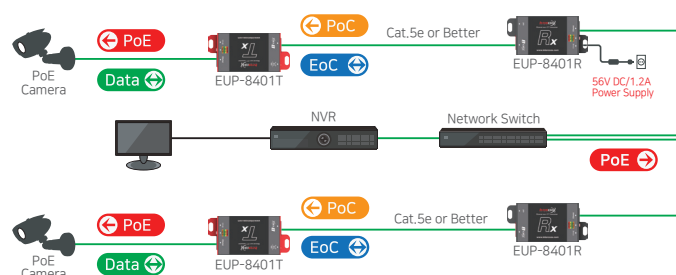
## ▲ Features

- Ethernet over UTP communication following IEEE1901 Standard
- Data + Power over UTP cable (Cat.5e or better)
- Data distance up to 1.2Km
- PoE distance up to 1.2Km
- Max. 80Mbps Bandwidth
- 10/100 Full Duplex
- 128bit AES network encryption
- Supports Multi-connection (Daisy chain, Star, etc.)
- PoE, PoE+, Extra PoE (Max. 60W output) (EUP-8401T only)
- PoE ON/OFF Switch (EUP-8401T only)
- Quality LED
- Plug & Play
- Over Current Protection for safe power transmission.
- Surge Protection
- Support PoE+ Input (25.5W) from PSE devices – EUP-8401R Only
- Ultra-Slim Design

## ▲ Performance chart



## ▲ Connection Diagram



- Transmission distance may vary depending on the type and quality of cable, use of power and environmental condition.
- Distance is based on Cat.5e cable and 7 Watt IP Camera.

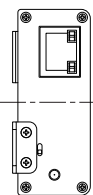
# EUP-101T/R

► Single Port Ethernet over UTP Transmitter / Receiver (Multicast)

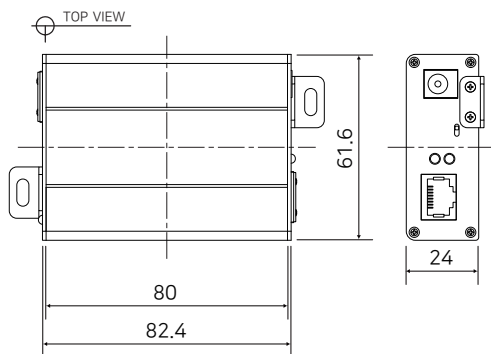
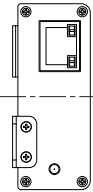


## Dimension

EUP-101 T



EUP-101 R



## Specification

Model		EUP-101T	EUP-101R
Interface	EoC Signal	1 x RJ45 - Ethernet over UTP (T-LinX)	
	Ethernet	1 x RJ45 - 10/100 Base-T with manual	
Transmission Rate		10/100Mbps Full Duplex	
Transmission Distance	Ethernet	up to 600 m (Cat5e UTP Cable)	
	PoE (PoC)	up to 600 m (Cat.5e / 20W)	
LED Indication	Ethernet	1 x Link / Act (Green) / 1- PoE (Green)	
	PoE	1 x Link (Blue) / 1- Act (Green)	
	Power	1 x Power On (Green)	
Power	Input	DC48V~57V	
	PoE Output	IEEE802.3af (PoE), IEEE802.3at (PoE+), Extra PoE up to 60W	PoE Not Supported PoC Only
	PoE Input	Not Supported	Up to 25.5W (PD)
Mechanical	Dimension	82.4(L) x 61.6(W) x 24(H)mm	
	Weight	70g	
Environment	Operating Temp	-20 ~ 60°C	
	Storage Temp	-30 ~ 80°C	
	Relative Humidity	10% ~ 90%	
Compliance	Certification	FCC, CE, KC	
	Surge Protection	IEC 61000-4-5 4kV(1.2 / 50us), 2kA(8 / 20us)	
Optional Accessories		56VDC / 1.2A External Power Supply	

## Overview

EUP-101 Series are High-Speed, long distance Ethernet & PoE extender that makes possible to transmit the Ethernet signal and PoE up to 600m through UTP cables in different situations.

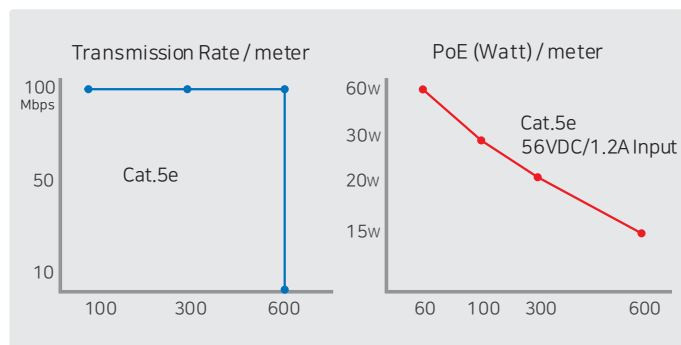
It is cost-effective and time saving solution to migrate existing analog system to IP based system since EUP-101 supports easy installation utilizing the existing UTP cable.

With long distance transmission feature, the device makes to overcome 100 meters distance limitation easily and reduces the construction cost significantly compared with fiber optic configuration.

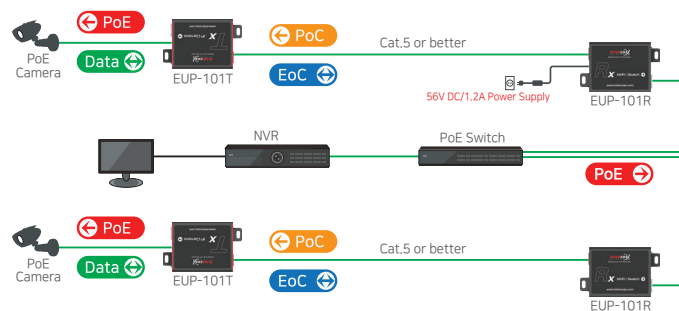
## Features

- Ethernet Extension using UTP cable (Cat.5e or better)
- Data + Power over UTP cable
- Data and PoE distance up to 600m
- Max. 100Mbps Bandwidth
- 10/100 Full Duplex
- Multicast supported
- PoE, PoE+, Extra PoE (Max. 60W output) (EUP-101T only)
- PoE ON/OFF Switch (EUP-101T only)
- Quality LED (Data & Power)
- Plug & Play
- Surge Protection
- Support PoE+ Input (25.5W) from PSE devices - EUP-101R Only
- Compact design

## Performance chart



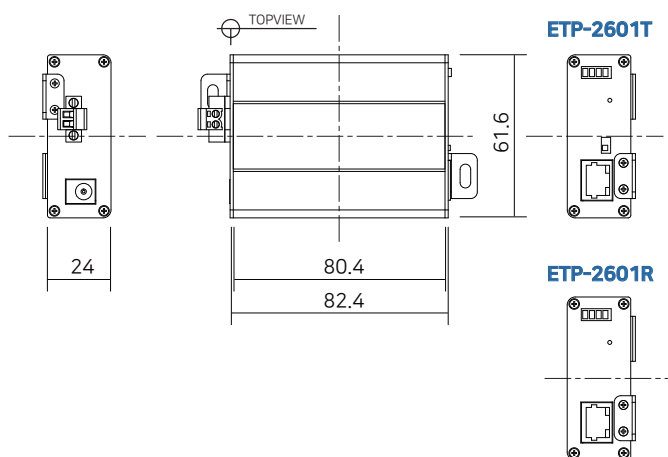
## Connection Diagram



- Transmission distance may vary depending on the type and quality of cable, use of power and environmental condition.
- Distance is based on Cat.5e cable and 7 Watt IP Camera.



### Dimension



### Specification

Model		ETP-2601T	ETP-2601R
Interface	2-Wire	1 x 2-Pin Terminal Block - Ethernet over 2-Wire (T-LinX)	
	Ethernet	1 x RJ45 - 10/100 Base-T with Auto-detect MDIX	
Transmission Rate		95Mbps Full Duplex (270Mbps between Intercoax 2 series models)	
Transmission Distance	2-Wire	up to 600 m (Twisted Pair Cable/Cat.5e)	
	PoE (PoC)	up to 300 m (Cat.5e / 7W camera)	
LED Indication	Ethernet	1 x Data-Link (Yellow)	
	Data over 2-Wire	1 x Join-Link (Green)	
	Power	1 x Power On (Amber)	
	PoE Output	1 x PoE Out (Red)	
Encryption		128-bit AES	
Power	Input	T-LinX or DC12V~57V	PoE Switch or DC48V~57V
	PoE Output	IEEE802.3af(PoE), IEEE802.3at (PoE+), Extra PoE up to 60W	PoE Not Supported Power Over 2-Wire Only
	PoE Input	Not Supported	Up to 25.5W (PD)
Mechanical	Dimension	80.4(L) x 61.6(W) x 24(H)mm	
	Weight	102g	
Environment	Operating Temp	-20 ~ 60°C	
	Storage Temp	-30 ~ 80°C	
	Relative Humidity	10% ~ 90%	
Compliance	Certification	FCC, CE, KC	
	Surge Protection	IEC 61000-4-5 4kV(1.2 / 50us), 2kA(8 / 20us)	
Optional Accessories		56VDC / 1.2A External Power Supply	

### Overview

ETP-2601 Series are High-Speed, long distance Ethernet & PoE extender that makes possible to transmit the Ethernet signal and PoE via 2-Wire cable (Twisted pair cable, COM, Power line) in different situations.

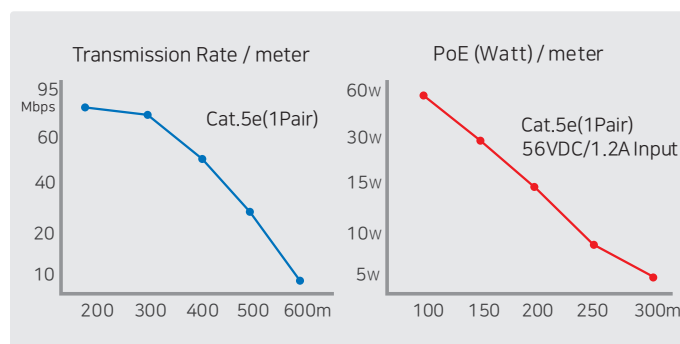
It is cost-effective and time saving solution to migrate existing analog system to IP based system since ETP-2601 supports easy installation utilizing the existing cable.

With long distance transmission feature, the device makes to overcome 100 meters distance limitation easily and reduces the construction cost significantly compared with fiber optic configuration.

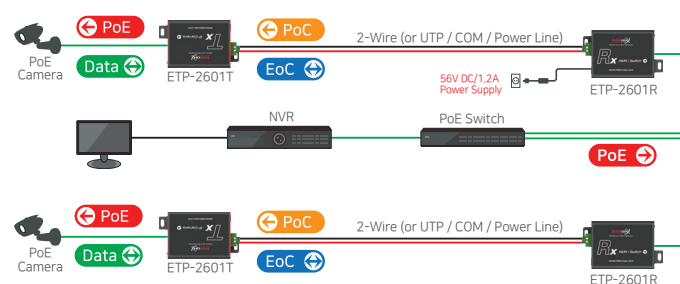
### Features

- Ethernet over 2-Wire communication following IEEE1901 Standard
- Data + Power over 2-Wire cable (UTP, COM, Power Line, etc.)
- Supports long distance Untwisted/Twisted 2-Wire cables
- Data distance up to 600m
- PoE distance up to 300m
- Max. 95Mbps Bandwidth (270Mbps between Intercoax 2 series models)
- 10/100 Full Duplex
- 128bit AES network encryption
- Supports Multi-connection (Daisy chain, Star, etc.)
- PoE, PoE+, Extra PoE (Max. 60W output) (ETP-2601T only)
- PoE ON/OFF Switch (ETP-2601T only)
- Quality LED (Data, Power, Link, PoE)
- Plug & Play
- Surge Protection
- Support PoE+ Input (25.5W) from PSE devices – ETP-2601R Only
- Slim design

### Performance chart



### Connection Diagram



- Transmission distance may vary depending on the type and quality of cable, use of power and environmental condition.
- Distance is based on Cat.5e(1 Pair) cable and 7 Watt IP Camera.

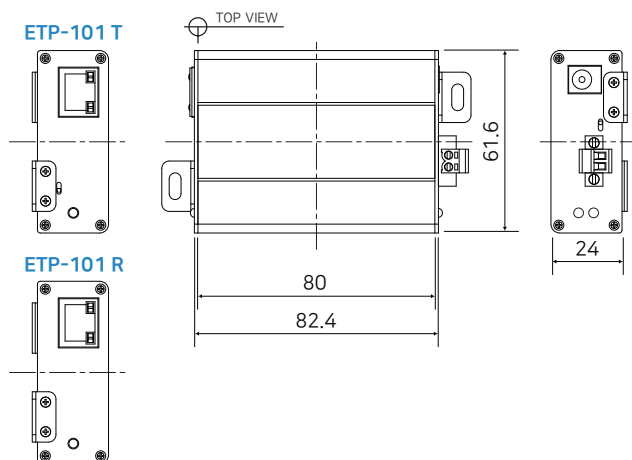


# ETP-101T/R

► Single Port Ethernet over 2-Wire Transmitter / Receiver (Multicast)



## Dimension



## Specification

Model		ETP-101T	ETP-101R
Interface	EoC Signal	1 x 2-Pin Terminal Block-Ethernet over 2-Wire cable	
	Ethernet	1 x RJ45 - 10/100 Base-T with manual selection	
Transmission Rate		10/100Mbps Full Duplex	
Transmission distance	Ethernet	Up to 300m (1 Pair of Cat.5e)	
	PoE (PoC)	Up to 300m (1 Pair of Cat.5e / 7W Camera)	
LED Indication	Ethernet	1 x Link / Act (Green) / 1 x PoE (Green)	
	PoE	1 x Link (Blue) / 1 x Act (Green)	
	Power	1 x Power On(Green)	
Power	Input	DC48V~57V	
	PoE Output	IEEE802.3af (PoE), IEEE802.3at (PoE+), Extra PoE up to 60W	PoE Not Supported PoC Only
	PoE Input	Not Supported	Up to 25.5W (PD)
Mechanical	Dimension	82.4(L) x 61.6(W) x 24(H)mm	
	Weight	70g	
Environment	Operating Temp.	-20 ~ 60°C	
	Storage Temp.	-30 ~ 80°C	
	Relative Humidity	10% ~ 90%	
Compliance	Certification	FCC, CE, KC	
	Surge Protection	IEC 61000-4-5 4kV(1.2 / 50us), 2kA(8 / 20us)	
Optional Accessories		56VDC / 1.2A External Power Supply	

## Overview

ETP-101T/R is a High-Speed, long distance Ethernet & PoE extender that makes possible to transmit the 100Mbps Ethernet signal and PoE up to 300m via 2-Wire cable (Twisted pair cable, COM, Power line) in different situations.

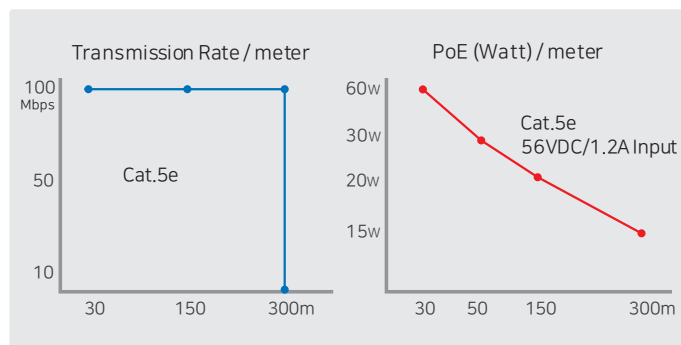
It is cost-effective and time saving solution to migrate existing analog system to IP based system since ETP-101T/R supports easy installation utilizing the existing cable.

With long distance transmission feature, the device makes to overcome 100 meters distance limitation easily and reduces the construction cost significantly.

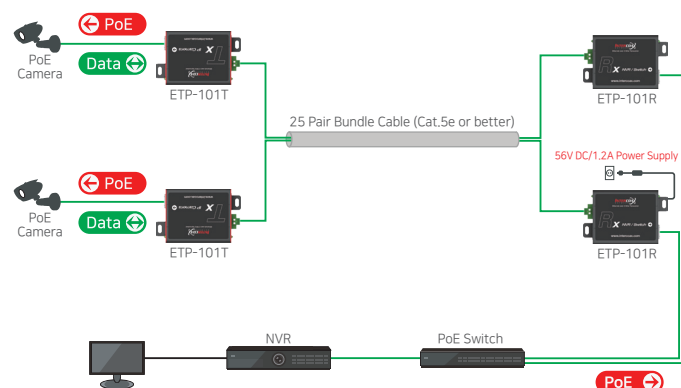
## Features

- Ethernet Extension over 2-Wire Cable (Twisted Pair, COM, Alarm, Power line, etc.)
- Data + Power over 2-Wire cable
- Data & PoE distance up to 300m (Twisted Pair)
- Max. 100Mbps Bandwidth
- 10/100 Full Duplex
- Multicast Supported
- PoE, PoE+, Extra PoE (Max. 60W output) (ETP-101T only)
- PoE ON/OFF Switch (ETP-101T only)
- Quality LED (Data, Power, Link, PoE)
- Plug & Play
- Support PoE+ Input (25.5W) from PSE devices (ETP-101R Only)
- Compact Design
- Surge Protection

## Performance chart



## Connection Diagram



## HPS-1008RM

► 8 Port Hybrid PoE Switch (NMS)



## ▲ Overview

The HPS-1008RM is a 19" rack mountable 8+2 port Gigabit Hybrid PoE Switch that transmits 1Gbps Ethernet and supports PoE +(up to 25.5W)

Using HPS-01 (2 Port Hybrid PoE Switch), the device supports 100Mbps Ethernet transmission and PoE+ power supply up to 250 meters and it is possible to connect multiple devices in cascade mode.

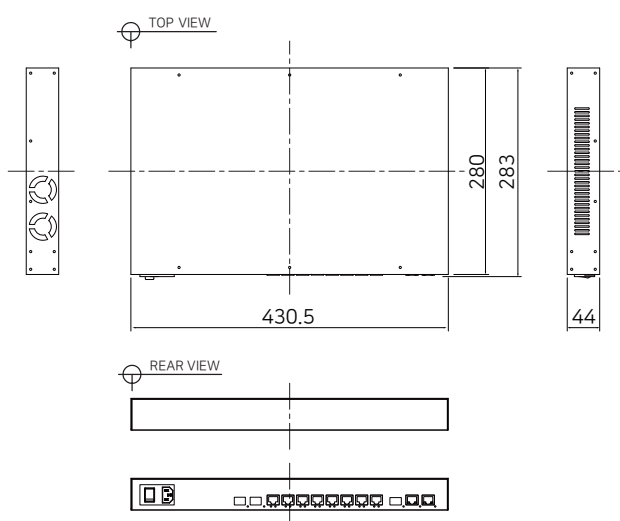
With the built-in standard PSE and the over current protection function, the device supplies secured PoE+ power up to 25.5W by each port.

The NMS (Network Management System) feature with the Browser based GUI & the exclusive Management software allow monitoring and managing multiple Hybrid PoE Switches remotely from central office.

## ▲ Features

- Gigabit 8+2 port PoE Switch
  - Downlink(1Gbps): 8 x RJ45, 2 x SFP
  - Uplink(1Gbps): 2 x RJ45, 1 x SFP
- 10/100/1000 Ethernet (Full Duplex)
- Extended Ethernet (100Mbps) distance up to 250 m (With the HPS-01: 2 port Hybrid PoE Switch)
- Cascade configuration (With the HPS-01: 2 port Hybrid PoE Switch)
- PoE, PoE+ output up to 25.5W
- Over current protection for secured power supply
- Surge Protection
- NMS (Network Management System)
  - Connection Status monitoring
  - Transmission Bandwidth per port monitoring
  - Reset per each port
  - Device ID setting
  - Event & Alarm
  - Power consumption monitoring
  - SNMP
  - Default Setting (User, Factory)
  - e-MAP

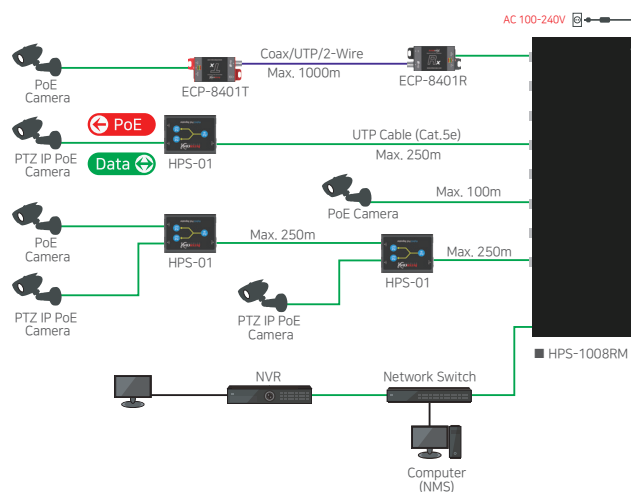
## ▲ Dimension



## ▲ Specification

Model		HPS-1008RM: 8 Port Hybrid PoE Switch
Interface	Downlink	8 x RJ-45 ~ 10/100/1000 Base-T with Auto-detect MDIX 2 x SFP ~ 1000 Base-FX
	Uplink	2 x RJ-45 ~ 10/100/1000 Base-T with Auto-detect MDIX 1 x SFP ~ 1000 Base-FX
Transmission Rate		1Gbps Full Duplex
Transmission Distance	Ethernet / PoE	Up to 100m Up to 250m with HG-01 (2 Port Hybrid PoE Switch)
LED Indication	Ethernet (Downlink)	8 x RJ45 Data Link (Green) 2 x SFP Data Link (Green)
	Ethernet (Uplink)	2 x RJ45 Data Link (Green) 1 x SFP Data Link (Green)
	PoE Output	8 x PoE Output (Amber)
	PWR Input	1 x Power Input (Blue)
Power Input		AC100V-240V (50Hz/60Hz), 250W SMPS
Power Output	PoE	IEEE802.3af(PoE), IEEE802.3at (PoE+ / up to 25.5W)
Mechanical	Dimension	430.5(L) x 280(W) x 44(H) mm
	Weight	102g
Environment	Operating Temp	-10~ 60°C
	Storage Temp	- 30 ~ 80 °C
	Relative Humidity	10% ~ 90%
Compliance	Certification	FCC, CE, KC
	Surge Protection	IEC 61000-4-5 4kV(1.2 / 50us), 2kA(8 / 20us)

## ▲ Connection Diagram



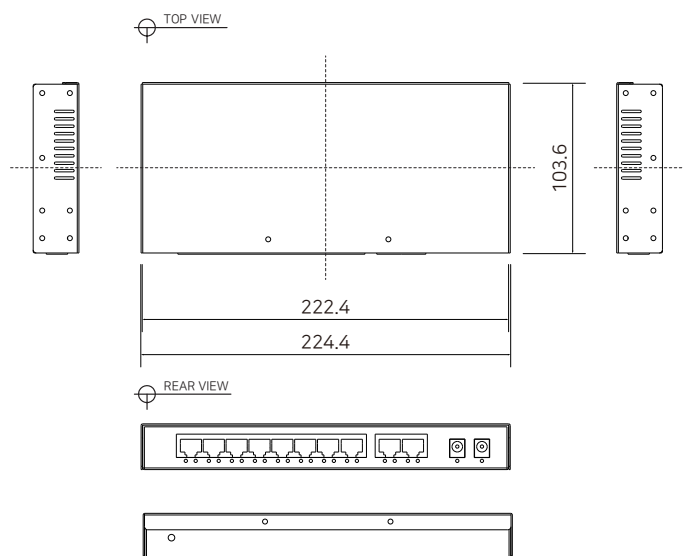
► Transmission distance may vary depending on the type and quality of cable.

# HPS-1008

► 8 Port Hybrid PoE Switch



## Dimension



## Specification

Model		HPS-1008: 8 Port Hybrid PoE Switch
Interface	Downlink	8 x RJ-45 – 10/100/1000 Base-T with Auto-detect MDIX
	Uplink	2 x RJ-45 – 10/100/1000 Base-T with Auto-detect MDIX
Transmission Rate		Max. 1Gbps Full Duplex
Transmission distance	Ethernet / PoE	Up to 100m Up to 250m with HPS-01 (2 Port Hybrid Switch)
LED Indication	Ethernet (Downlink)	8 x RJ45 Data Link (Green)
	Ethernet (Uplink)	2 x RJ45 Data Link (Green/Orange)
	PoE Output	8 x PoE Output (Orange)
	PWR Input	2 x Power Input (Blue)
Power Input		2 x Power input [ DC-Jack ] DC48V-57V
Power Output	PoE	IEEE802.3af(PoE), IEEE802.3at (PoE+ / up to 25.5W)
	Dimension	225(L) x 105(W) x 29(H) mm
Mechanical	Weight	700g
	Operating Temp.	0 ~ 50 °C
	Storage Temp.	- 30 ~ 80 °C
Environment	Relative Humidity	10% ~ 90%
Compliance	Certification	FCC, CE, KC
	Surge Protection	IEC 61000-4-5 4kV(1.2 / 50us), 2kA(8 / 20us)

## Overview

The HPS-1008 is 8 + 2 port Gigabit Hybrid PoE+ Switching Hub that transmits 1Gbps Ethernet and supports PoE+ (up to 25.5W).

Using HPS-01 (2 Port Hybrid PoE Switch), the device supports 100Mbps Ethernet transmission and PoE+ power supply up to 250 meters and it is possible to connect multiple devices in cascade mode.

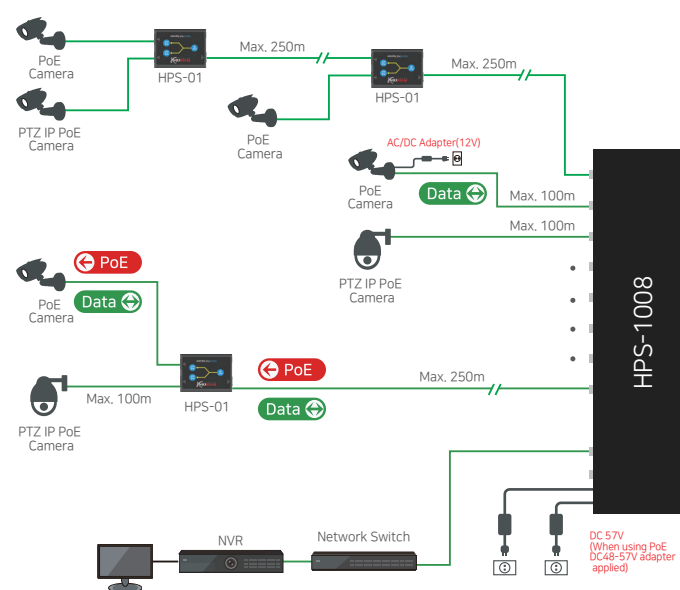
With dual DC inputs supply secured PoE+ power up to 25.5W by each port and can also be used redundancy power source.

Optional 19" rack mount is available for easy installation.

## Features

- Gigabit 8+2 port PoE Switch
  - Downlink: 8 x RJ45      Uplink: 2 x RJ45
- 10/100/1000 Ethernet (Full Duplex)
- Extended Ethernet (100Mbps) distance up to 250 m (With HPS-01, 2 port Hybrid PoE Switch)
- Cascade configuration (With the HPS-01: 2 port Hybrid PoE Switch)
- PoE, PoE+ output up to 25.5W
- Over current protection for secured power supply
- Surge Protection
- Dual DC adapter inputs
- Compact Hybrid Switch Design
- Optional 19" Rack mount

## Connection Diagram



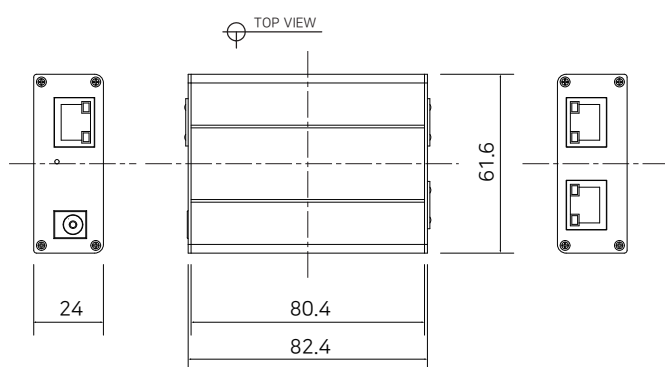
► Transmission distance may vary depending on the type and quality of cable.

# HPS-01

► 2 Port Hybrid PoE Switch (NMS)



## Dimension



## Specification

Model		HPS-01: 2 Port Hybrid PoE Switch
Interface	Downlink	2 x RJ-45
	Uplink	1 x RJ-45 ~ 10/100 Base-T with Auto-detect MDIX
Transmission Rate		100 Mbps Full Duplex
Transmission distance	Ethernet / PoE	Up to 100m ~ 1000 Base-T Up to 250m between devices ~ 10/100 Base-T
LED Indication	Data	3 x Data Link (Green)
	PoE	3 x PoE Link (Amber)
Power Input	PoE	IEEE802.3af(PoE), IEEE802.3at (PoE+)
	DC	DC48V ~ 57V
Power Output	PoE	IEEE802.3af(PoE), IEEE802.3at (PoE+), Extra PoE up to 60W (Using PF-560120: 56VDC / 1.2A power supply)
Mechanical	Dimension	80.4(L) x 61.6(W) x 24(H) mm
	Weight	102g
Environment	Operating Temp.	- 20 ~ 60 °C
	Storage Temp.	- 30 ~ 80 °C
	Relative Humidity	10% ~ 90%
Compliance	Certification	FCC, CE, KC
	Surge Protection	IEC 61000-4-5 4kV(1.2 / 50us), 2kA(8 / 20us)
Optional Accessories		56VDC / 1.2A External Power Supply

## Overview

The HPS-01 is a 2Port Hybrid PoE Switch that transmits network signal and PoE+ power up to 250 meters between the devices.

1 input 2 output design makes easy to install 2 network devices into a single LAN cable and possible to connect multiple devices in a cascade configuration.

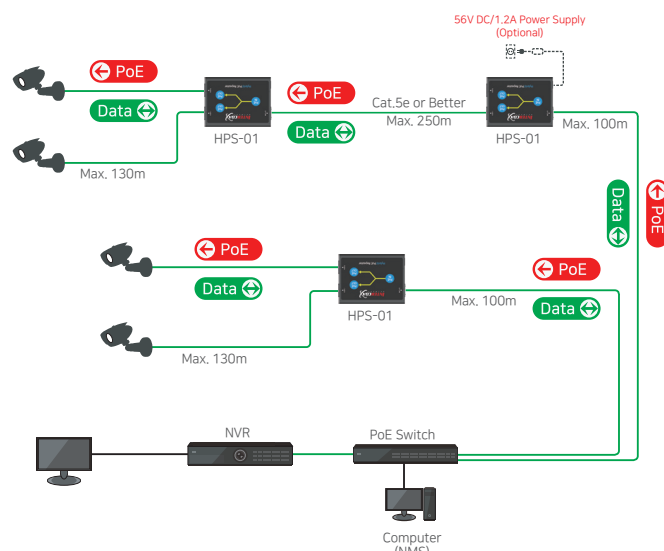
With built-in standard PD, the device supports secure PoE+ power supply and outputs PoE up to 25.5W.

The NMS (Network Management System) feature with the Browser based GUI & the exclusive Management software allow monitoring and managing multiple Hybrid PoE Switches remotely from central office.

## Features

- 1 input 2 output design (Possible to connect 2 network devices using 1 cable)
- Extended Ethernet transmission distance up to 250m (Configured with the Hybrid PoE Switch Series)
- 10/100 Base-T Ethernet (Full Duplex)
- PoE, PoE+, Extra PoE (Max. 60W output)
- PoE, PoE+ input
- DC48~57V power input
- Cascade configuration
- Over current protection for secured power supply
- Surge Protection
- NMS (Network Management System) by IP address
  - Connection Status monitoring
  - Transmission Bandwidth per port monitoring
  - Reset per each port
  - Device ID setting
  - Event & Alarm
  - Power consumption monitoring
  - SNMP
  - Default Setting (User, Factory)

## Connection Diagram



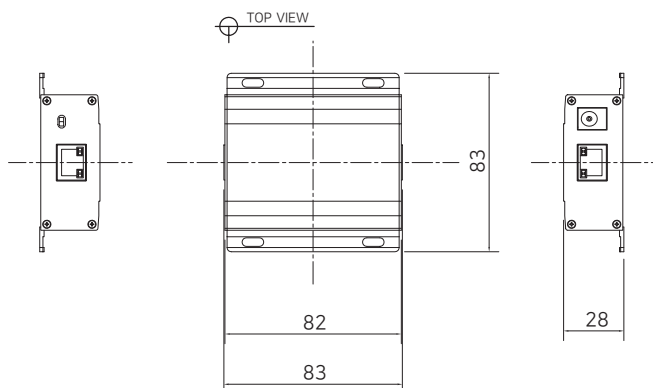
► Transmission distance may vary depending on the type and quality of cable.

# EPR-1001

► Gigabit Ethernet & PoE+ Repeater



## Dimension



## Specification

Model		EPR-1001
Interface	LAN / PoE In	1 x RJ45 - 10/100/1000 Base-T with Auto-detect MDIX
	LAN / PoE Out	1 x RJ45 - 10/100/1000 Base-T with Auto-detect MDIX
Transmission Rate		1Gbps Full Duplex
Transmission Distance		100m <sup>**</sup> (250m)
LED Indication	Ethernet	1 x Data(Green)
	Power	1 x PoE(Yellow)
PoE	Standards	IEEE802.3af / IEEE802.3at
	Max. Power	Max. 25.5W (PoE) / 60W (DC 57V/1.2A)
Mechanical	Dimension	82(L) x 83(W) x 28(H)mm
	Weight	118g
Environment	Operating Temp	-20 ~ 60°C
	Storage Temp	-20 ~ 80°C
	Relative Humidity	10% ~ 90%

► <sup>\*\*</sup>( ) : Max. distance between Intercoax PoE Repeaters

## Overview

EPR-1001 is a Gigabit (10/100/1000) Ethernet & PoE + Repeater that make possible to overcome max. 100m distance limitation of the standard network configuration.

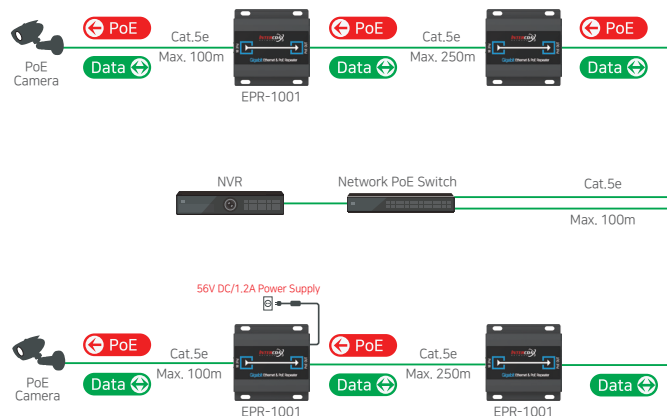
For more distance extension, the devices can be added by daisy-chaining (up to 750m) and possible to configure an IP extension easily.

It is cost effective and easy installation solution for all kind of PoE (IEEE802.3af), PoE+ (IEEE802.3at) compliant devices and the device outputs high power PoE (up to 60W) by using 56VDC / 1.2A Power supply.

## Features

- Gigabit Ethernet & PoE Repeater
- Up to 250 meter Ethernet & PoE Extension
- Additional extension by adding devices (Up to 750m / 250m extension between devices)
- IEEE802.3af (15W) / IEEE802.3at (25.5W) / Up to 60W PoE output (Using 56VDC / 1.2A Power supply)
- PoE output On / Off Switch
- PoE, PoE+ Input (From PoE Switch, PoE Injector)
- Surge Protection
- DC input supported (DC12~57V)

## Connection Diagram



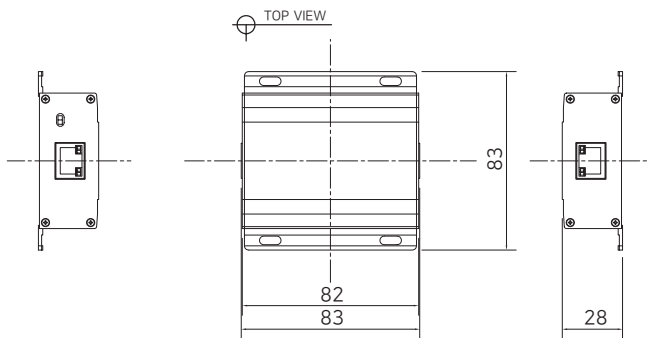
► Transmission distance may vary depending on the type and quality of cable, use of power and environmental condition.



## EPR-101



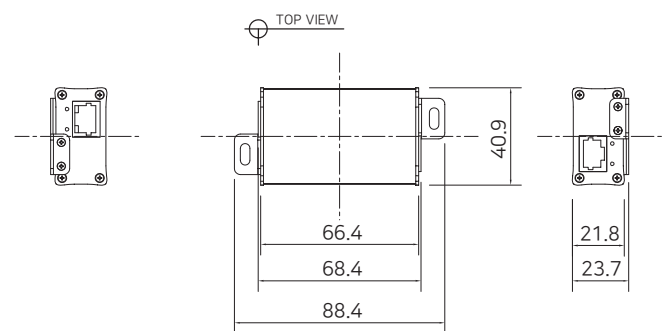
## Dimension



## EPR-111



## Dimension



## Specification

Model		EPR-101	EPR-111
Interface	LAN / PoE In	1 x RJ45 - 10/100 Base-T with Auto-detect MDIX	
	LAN / PoE Out	1 x RJ45 - 10/100 Base-T with Auto-detect MDIX	
Transmission Rate		100Mbps Full Duplex	
Transmission Distance		100m ** (250m)	100m ** (200m)
LED Indication	Ethernet	1 x Data (Green)	
	Power	1 x PoE (Yellow)	
PoE	Standards	IEEE802.3af (PoE)	
	Max. Power	Max. 15W	
Mechanical	Dimension	82(L) x 83(W) x 28(H)mm	66.4(L) x 40.9(W) x 21.8(H)mm
	Weight	118g	72.5g
Environment	Operating Temp	-20 ~ 60°C	
	Storage Temp	-20 ~ 80°C	
	Relative Humidity	10% ~ 90%	

► \*\* ( ) means Max distance between EPR series.

## Overview

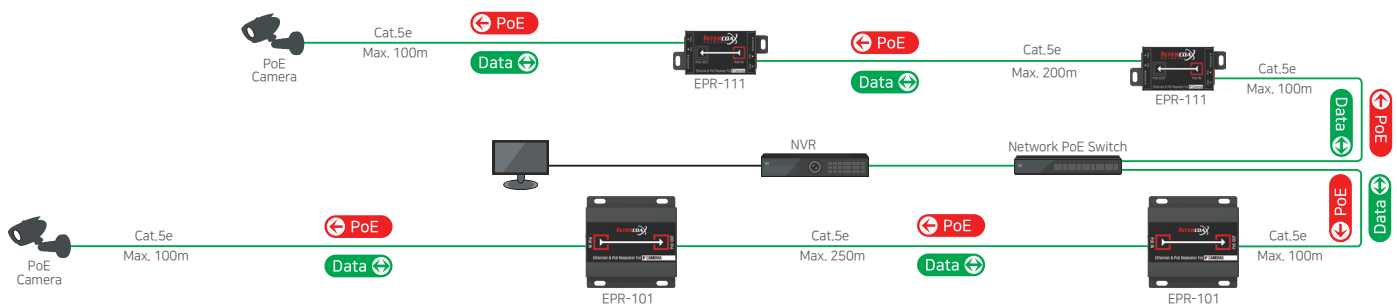
EPR Series are Ethernet & PoE Repeaters that make possible to overcome max. 100m distance limitation of the network configuration. For more distance extension, the devices can be added by daisy-chaining (up to 750m).

It is cost effective and easy installation solution for all kind of PoE (IEEE802.3af / 15W) compliant devices such as IP cameras, Network Switch, VoIP Phone, etc.

## Features

- Ethernet & PoE Repeater
- Up to 250m Ethernet & PoE extension (EPR-111: 200m)
- Additional extension by adding devices
- 15W PoE output (IEEE802.3af)
- PoE On/Off switch supported (EPR-101 only)
- No additional power required (PoE powered)
- Surge Protection
- Slim design (EPR-111)

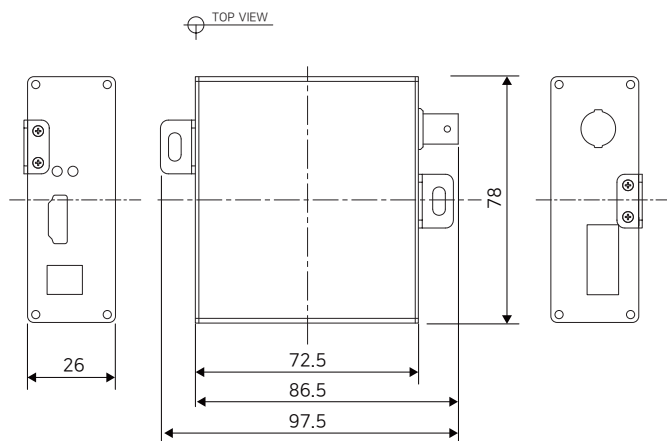
## Connection Diagram



► Transmission distance may vary depending on the type and quality of cable, camera and environmental condition



### Dimension



### Specification

Model		HOC-500T	HOC-500R
Interface	HDMI	HDMI (Type A)	
	Coax	BNC-F (75Ω)	
HDMI Standard		HDMI 1.3 / HDCP 1.3	
HDMI Resolution		Up to 1,920 x 1,080P 24/50/60fps (1080p / 1080i / 720p / 480p / 480i)	
HDMI Bandwidth		Max. 6.75Gbps	
HDMI Audio		LPCM (2.0 CH)	
RF Frequency		140 ~ 950 MHz	
Transmission Distance	HDMI	Max. 15m (HDMI Cable AWG26)	
	Coax / RF	Max. 500m (5C-HFBT)	
LED Indication	HDMI	1 x HDMI In (Green)	1 x HDMI Out (Green)
	Power	1 x Power On (Green)	
Power	Input	DC5V/1A	
Mechanical	Dimension	72.5(L) x 78(W) x 26(H)mm	
	Weight	115g	110g
Environment	Operating Temp.	-10 ~ 45°C	
	Storage Temp	-20 ~ 60°C	
	Relative Humidity	10% ~ 90%	
Compliance	Certification	FCC, CE, KC	
	Surge Protection	IEC 61000-4-5 4kV(1.2 / 50us), 2kA(8 / 20us)	

### Overview

The HOC-500T/R is an HDMI Extender that can transmit HDMI signals over long distances using coaxial cable.

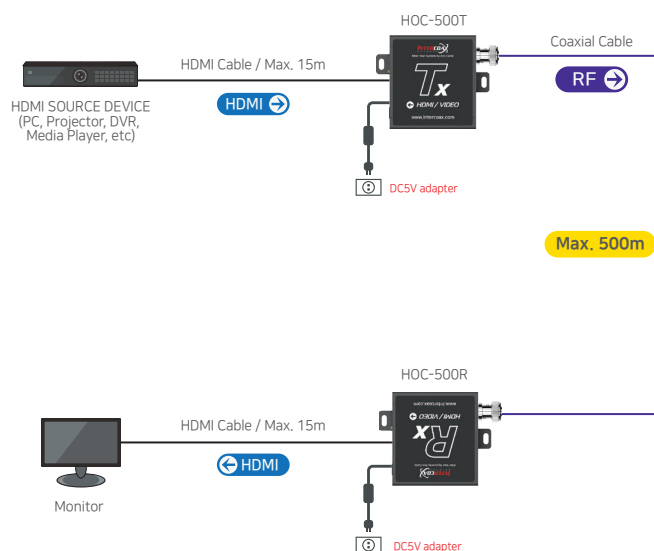
By using the coaxial cables already installed or newly installed coaxial cable, it is possible to transmit HDMI video and audio signal with Max.1920x1080P 60fps FULL HD resolution up to 500 meters.

HOC-500T/R offers solutions for various system configurations such as CCTV, AV equipment and conference room, information distribution, etc.

### Features

- Long range HDMI (Video / Audio) signal transmission up to 500 meters over Coaxial cable.
- Support Max. 1920x1080P 60fps FULL HD resolution.
- 2.0CH Audio (LPCM)
- Support Max. 80 Channel frequency band (140~950Mhz).
- Anti-interference and error correction function by adopting digital TV communication protocol.
- Easy installation and channel setting by DIP switch.

### Connection Diagram



- Transmission distance may vary depending on the type and quality of cable, use of power and environmental condition.

# PF-560120

► 56VDC/1.2A Power Supply




## ▲ Overview

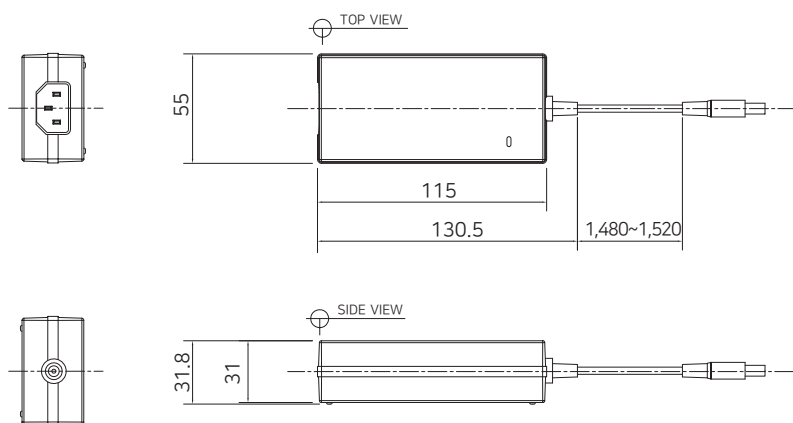
PF-560120 is a premium power supply unit designed for INTERCOAX Ethernet Extender Series.

PSU meets the power requirement of CCTV products that require IEEE802.3af, IEEE802.3at, and Extra PoE power (up to 60W).

## ▲ Features

- 56VDC / 1.2A Power supply
- Plug Polarity : 
- DC Cord: UL1185, 18AWG, 0D3.5
- Plug: 5.5 x 2.1 x 10 mm
- Case & Cord Color: Black

## ▲ Dimension



## ▲ Specification

Model	PF-560120
Input Range	120~240Vac, 50/60Hz
Input Plug	3Pin Inlet Type
Maximum Power	67.2W
Output Voltage	DC 56V
Output Current	1.2A
Over current protection	120%~300% (max)
Over voltage protection	120%~200% (max)
Energy Efficiency Level	LEVEL V
Average Efficiency	87% (min)
Safely Standards	UL, CE, KC, PSE
Dimension	115 x 55 x 31mm
Operating temperature	0~40 °C
Operating Humidity	0~85%(Non-condensing)
MTBF	30 000Hrs

# BTE-02/03/04

► Single Port BNC to RJ-45 / RJ-11 / Terminal Block Exchanger

BTE-02



BTE-03

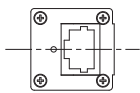


BTE-04

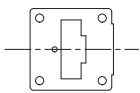


## Dimension

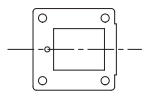
BTE-02



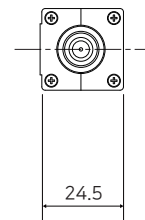
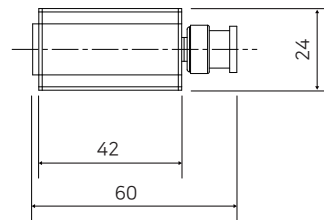
BTE-03



BTE-04



TOP VIEW



## Overview

BTE-02/03/04 is BNC to RJ-45 / RJ-11 / 2-Pin Terminal Block Exchanger that supports B-Linx signal and power transmission over UTP cable / Telephone wire / any kind of 2-Wire cable.

This exchanger works with Intercoax ECP series exclusively to use various new or existing cables in the field instead of Coaxial cable and it maintains optimum B-Linx signal without interference using impedance matching technology.

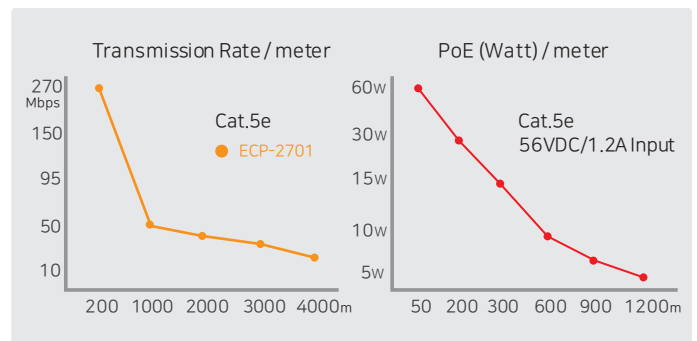
## Features

- BNC to RJ-45 (4 Pair cable) / RJ-11 (2 Pair cable) / Terminal block (1 Pair cable) Exchanger.
- Specialized Impedance Matching Technology (Maintain optimum signal without interference).
- Crosstalk cancellation Technology
- Power LED indication
- Exclusively compatible with Intercoax ECP-28XX, 27XX, 95XX, 84XX, 83XX series.

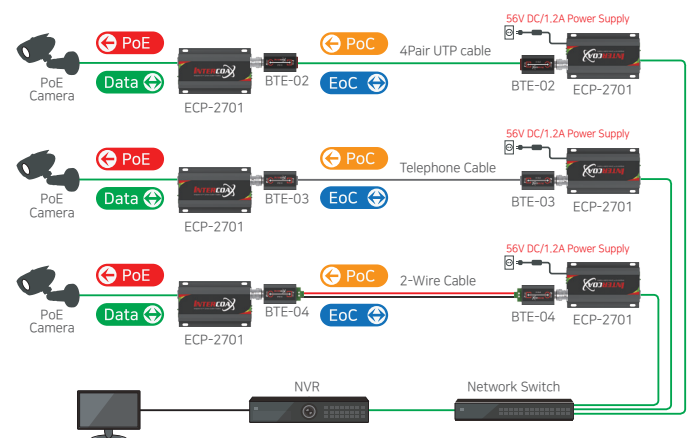
## Specification

Model		BTE-02	BTE-03	BTE-04
Interface	Coax	75Ω BNC (Male) - Ethernet over Coax		
	Pair cable	RJ45 (4 Pair)	RJ11 (2 Pair)	2-Pin Terminal Block (1 Pair)
LED Indication	Power	Blue On: Normal		
Power	Max. Current (W)	Up to 60W power over cable		
Mechanical	Dimension	60(L) x 24(W) x 24.5(H)mm		
	Weight	30g		
Environment	Operating Temp	-20 ~ 60°C		
	Storage Temp	-40 ~ 80°C		
	Relative Humidity	0% ~ 95%		

## Performance chart (with BTE-02)



## Connection Diagram



# ERM-800

► 8 Port 19"/2U Rack Mount Bracket (for ECP/EUP-101R)



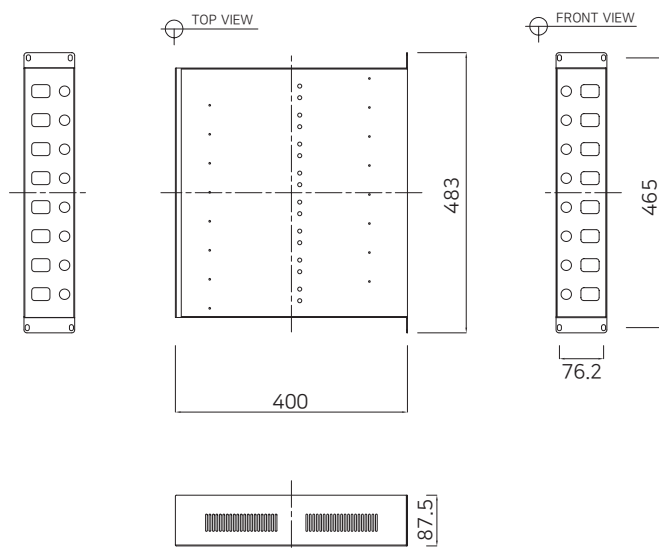
## Overview

ERM-800 is 19"(2U) size 8ch rack mountable bracket for up to 8 units of ECP/EUP receivers and 8 units of PF-560120 (Power supply) installation. ERM-800 provides ease of installation in the field where multiple receivers installation required.

## Features

- 8 Port 19"/2U Rack Mountable Bracket.
- Exclusive design for ECP-101R & EUP-101R.
- Up to 8 units of EoC receivers can be installed.
- Up to 8 units of PF-560120 (Power supply) can be installed.
- Provide detachable mounting bracket for EoC receivers and power supply.
- Provide ease of installation for multiple devices.

## Dimension



## Specification

Model		ERM-800
Port		8 Port
Detachable Bracket	EoC Receivers	8 EA (Exclusively for ECP-101R, EUP-101R)
	Power Supply	8 EA
Mechanical	Dimension	438(L) x 400(W) x 87.5(H) mm
	Weight	2,450g







*Don't re-cable. Re-enable !*

*We make migrating to IP simple, quick and cost-effective.*



**INTERCOAX EMEA BVBA**

Krijtestraat 45A,  
9041 Oostakker  
BELGIUM

Tel.: +32474891289  
General : [info-emea@intercoax.com](mailto:info-emea@intercoax.com)  
Sales : [sales-emea@intercoax.com](mailto:sales-emea@intercoax.com)  
Support : [support-emea@intercoax.com](mailto:support-emea@intercoax.com)

Follow us - click here :

