



# Welcome To Helios

## SECURITY HEALTH MONITORING

- BRING ALL YOUR CCTV SYSTEMS BACK UNDER YOUR CONTROL
- GENERATE CRITICAL REPORTS ON DEMAND



By tracking all key CCTV information, Helios incorporates sophisticated alerting and reporting. Providing security professionals with the tools they need to address the industry's most critical issues.

# WHAT IS HELIOS?

Helios is the world's first security solutions platform that brings your CCTV networks back under your control.

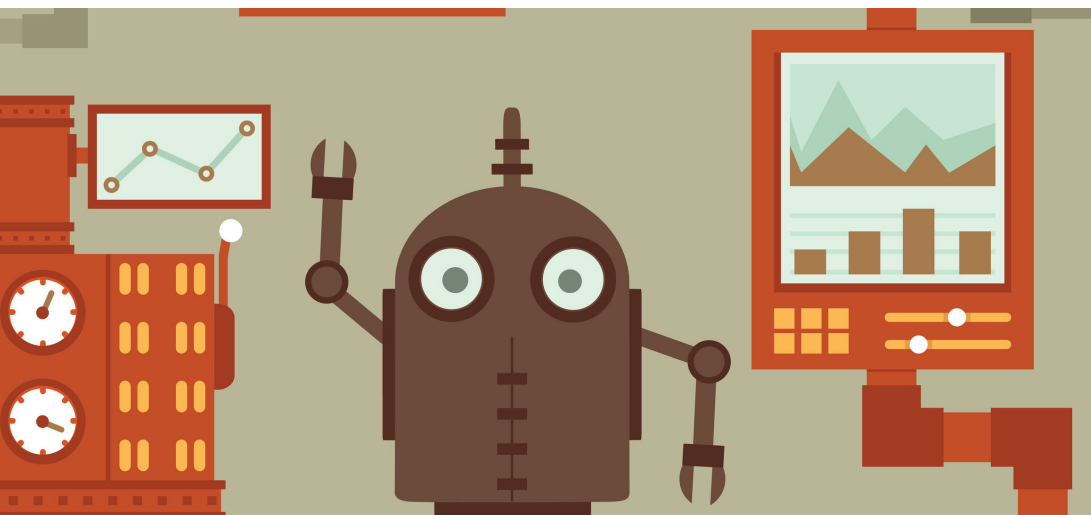
By tracking all key CCTV information, Helios incorporates sophisticated alerting and reporting that provides security professionals with the tools they need to address the industry's most critical issues.

- + Are your systems online?
- + Are they actually recording?
- + Are the images useful?

Helios was designed in partnership with security experts to ensure it covers the most frequent issues experienced within the security industry. It is the world's first and only CCTV management software of its kind. With all cameras and sites being located within an easy to use web portal, you can ensure your CCTV environments are operating as intended and receive immediate notifications if they are not.

Helios is designed to enable you to manage all of your CCTV networks from a single dashboard, regardless of camera brand or NVR. Imagine being able to see the status of all your CCTV systems at a glance whilst also having the ability to schedule and generate custom reports.

**Welcome to Helios!**



# HELIOS FEATURES

- + Camera Status
- + Real Actionable Alerts
- + Custom Alerting
- + System Config Backups
- + Storage Information
- + System Uptime
- + Image Check
- + Image Comparison
- + Granular User Permissions
- + Network Storage Information
- + Automated Reporting
- + Interactive Map View
- + Unauthorised Access Monitoring (Hacking)
- + SMS and Email Notifications
- + Full Cloud or Onsite Solution



*Granular Permission Groups allow you to manage user access from top to bottom.*



**Our Helios development team is constantly striving to incorporate new features, brands and functionality within our unique platform.**

# WHY HELIOS?

## **CAMERAS OFFLINE?**

Helios will provide real time alerts when a camera or branch is offline. By utilising smart alerting technology, Helios will only alert you to the issues you need to know about. Advanced reporting will also highlight any ongoing issues where camera drop outs are a regular occurrence. Say goodbye to trawling through an inbox full of alerts!

## **ARE YOUR CAMERAS RECORDING SUCCESSFULLY?**

One of the most pressing issues in the security industry is ensuring cameras are actively recording. With on demand and scheduled reporting, Helios will keep you informed of your sites recording success rate and will even highlight potential problems. With tougher legislation around OHS & Liquor Licensing requirements, ensuring your cameras are compliant has become increasingly difficult. Don't risk missing critical footage when you need it the most.

## **INVENTORY MANAGEMENT**

By collecting all critical information, Helios allows you to easily track and locate equipment. Helios can provide you with all the information on your devices, from serial numbers and firmware versions, to add-on modules such as GPS and Radar units. This greatly simplifies managing your hardware across multiple sites.

## **HACKING!**

Whilst strong usernames and complex passwords provide the first layer of protection, recent attacks have proven you can't "set and forget" your security devices. Helios employs a range of techniques to build on your camera's security capabilities and alerts you in real-time to any unusual activity.



# WHY HELIOS?

## **LOST CAMERA SETTINGS?**

Helios stores and backs up your camera's configuration on a pre-determined basis. This makes redeploying a camera with Helios a breeze as you can readily retrieve configurations on the fly and from the field. It is one of the many convenient features of Helios that will save you many hours of heartache.

## **ARE YOUR CAMERAS PERFORMING IN ALL LIGHTING CONDITIONS?**

Helios collates images throughout the day from your cameras. This allows you to review camera images under different lighting conditions. Perfect for making sure that changing seasons are not blinding your cameras at critical parts of the day and that after hours lighting is adequate.

## **HAVE YOUR CAMERAS MOVED?**

After setting a base Image, Helios checks a daily snapshot and compares the image for massive changes. This feature will alert you to when a camera has moved from say monitoring a car park to pointing at the ground.



**Only receive alerts when there is a real issue.  
No more inbox overload!**

# HOW HELIOS WORKS

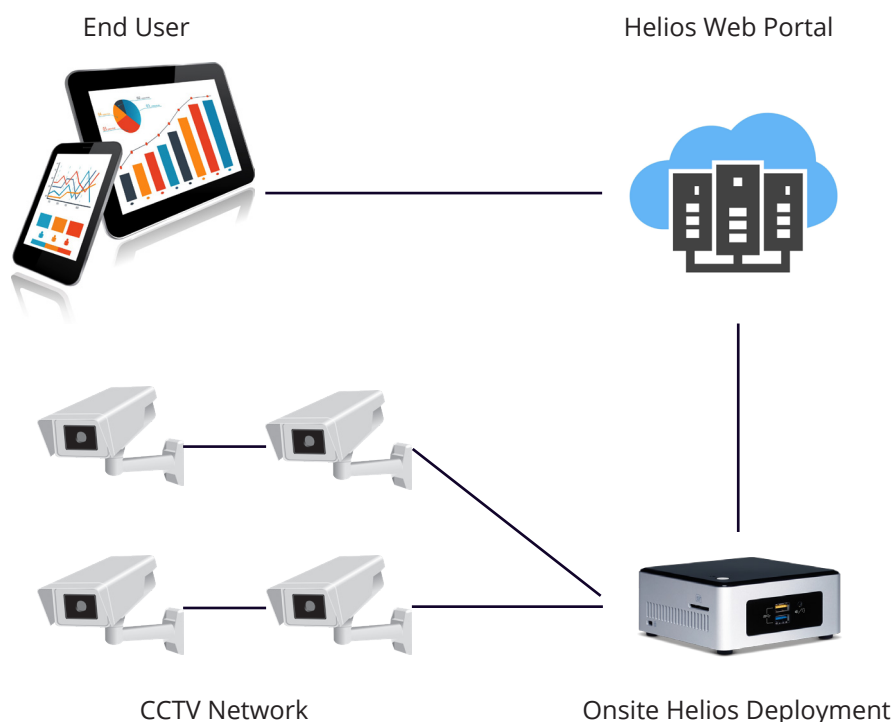
## ONSITE DEPLOYMENT

Helios can be installed on any Windows operating system. The Helios agent is a lightweight application that runs quietly and unobtrusively on any available PC or server. It can even run on a small form factor Intel NUC or Intel Compute Stick!

Following the install, all of your site management tasks can be performed from the Helios web portal. Within minutes, all of your CCTV information is online and available to you.

Updates and new features are automatically rolled out to your onsite Helios client as they become available.

For sites with over 20 cameras or poor internet connections, we recommend an onsite deployment as it helps reduce network congestion, therefore, increasing performance.



**The Helios agent is so lightweight it can happily run on an i3 or Celeron processor with just 2GB of ram. It will even run on an Intel compute stick.**

# HOW HELIOS WORKS

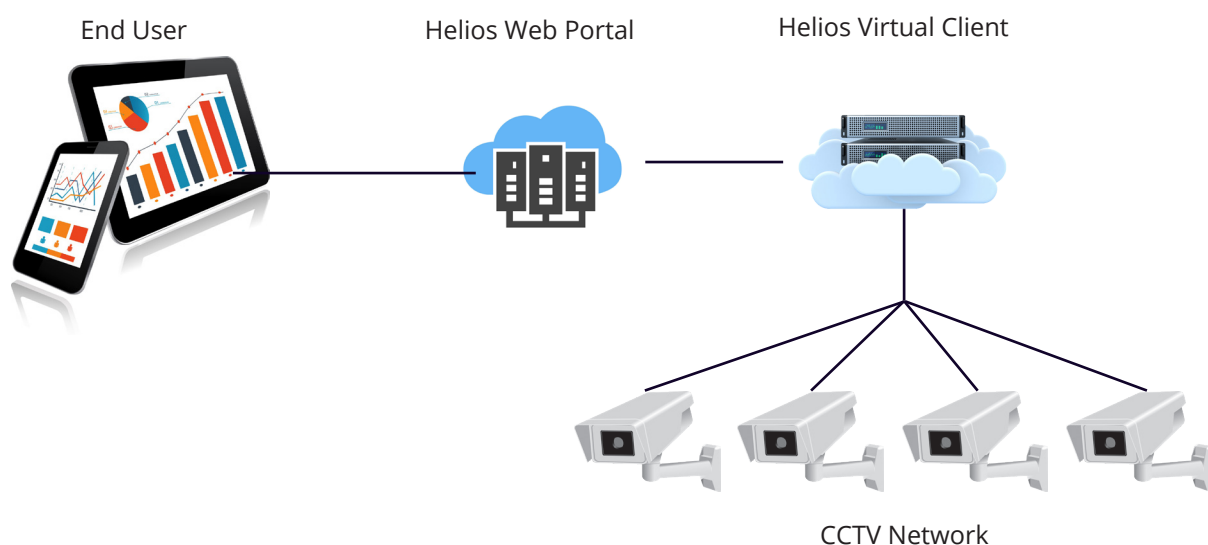
## CLOUD SOLUTION

Due to the rise in popularity of IP cameras and the introduction of rapid deployment CCTV installations, Helios has developed a cloud solution for sites where an onsite installation is not an option or remote access to the cameras or NVR is already deployed for remote viewing (port forwarding).

A Helios virtual deployment is as easy as entering the site details on the Helios web portal, then entering the IP and port numbers. Once completed you will have the same functionality as an onsite Helios deployment but with no onsite equipment required.

If you are enabling remote access purely for Helios, simply restrict remote access to the Helios Servers, keeping the site secure and free of extra hardware.

Although we recommend an onsite deployment for sites with more than 20 cameras, if the site has fast internet access and the number of remote connections is not an issue, then there is technically no limit to the number of cameras and NVR's that can be monitored remotely.



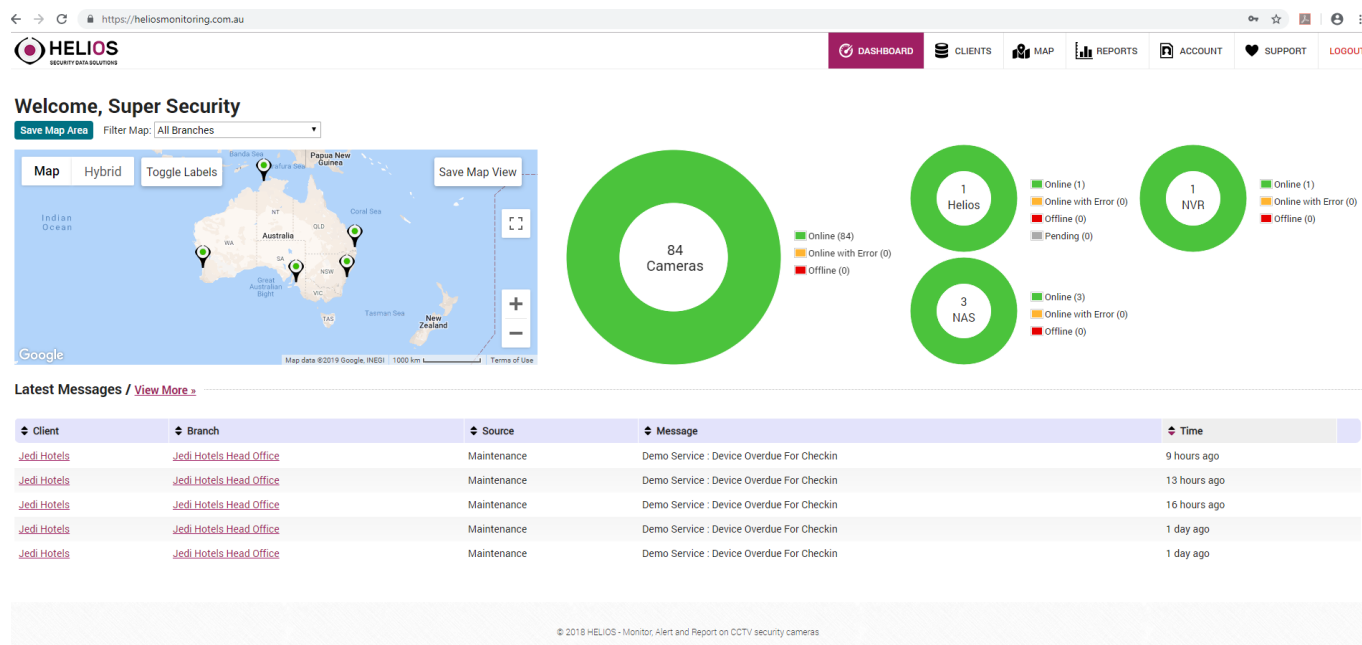
**Whether you have a 5000+ camera site or a single deployment in the outback, Helios has been built to adapt to your environment.**

# HELIOS DASHBOARD

The interactive Helios dashboard is built for seamless CCTV & asset management. The dashboard allows users to instantly see all sites and identify faults in a timely manner using the interactive map feature.

As an online platform, Helios can be accessed from any location via your tablet, laptop or mobile phone.

- + Interactive map view
- + Simple, easy to use information GUI
- + Fast fault diagnostics
- + Unique viewing permissions



**Instantly see all sites and identify faults in a timely manner using the interactive map feature.**



# HELIOS REPORTING

Our extensive reports provide a simple yet powerful way of displaying the data retrieved from your CCTV systems. These reports can not only be generated on demand but can also be scheduled on a daily, weekly or monthly basis.

Our reports turn raw data into actionable information. From image reports showing you images under different lighting conditions through to analytics reports with progressive heat maps, Helios comes jam packed with standard reports. If you have specialised reporting requirements, please contact us and our development team will be happy to discuss these with you.

- ⊕ Schedule your reports and have them emailed automatically to you.
- ⊕ Run reports on the fly within minutes of adding a new system to Helios.
- ⊕ Have a report suggestion? Let us know and we will add it to our growing list of custom reports!
- ⊕ Need a custom report to achieve a specific business outcome? Let us know and we'll be able to help.



**The following pages provide some sample reports.**



**Have a specific need? Custom built, bespoke reports are available upon request.**



# Jedi Hotels - Jedi Hotels Darwin

Mitchell St  
Darwin City

## Mobotix Storage Report

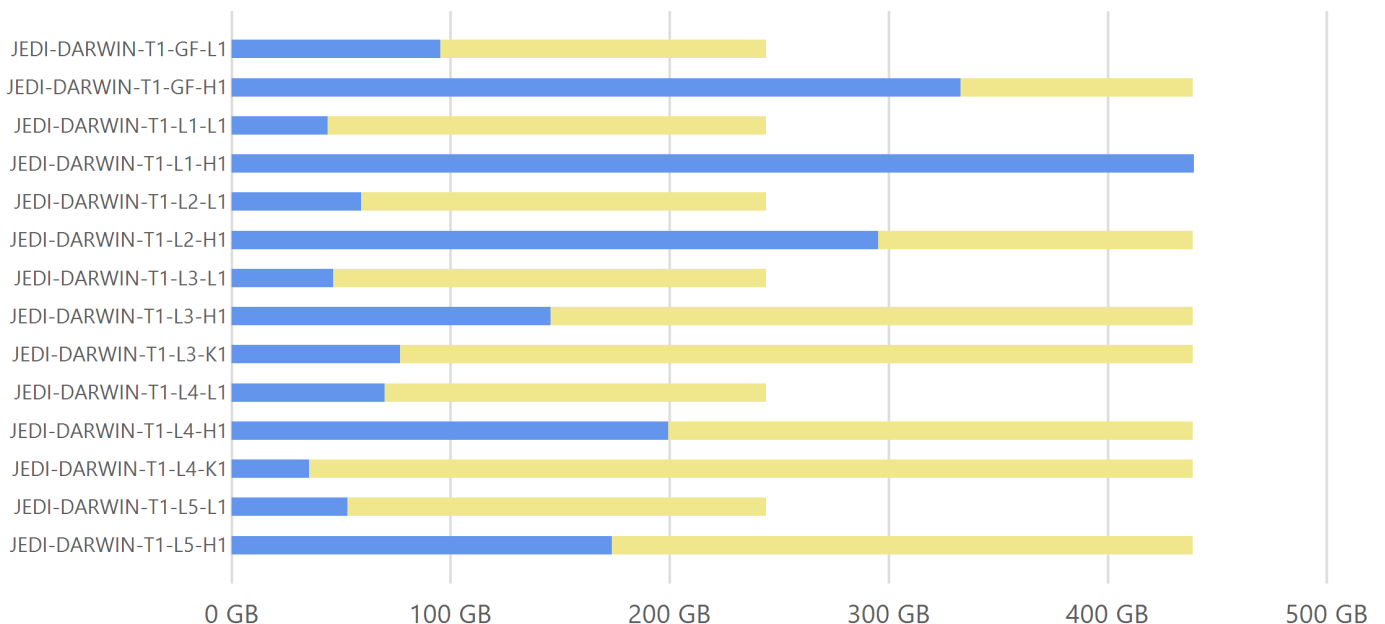
Report Date Range: 1/04/2019 - 7/04/2019

Report Generated On: 11/04/2019

### Storage Location: \\192.168.0.201\Camera-Recordings

Camera Name	IP Address	Cur. Usage	Max Size	Target Days	Actual Days	
JEDI-DARWIN-T1-GF-L1	192.168.0.31	95.2 GBytes (39.0%)	244 GBytes	21 days	21.00 days	Data ID: 1059764 Time: 6/04/2019 6:15:30 AM
JEDI-DARWIN-T1-GF-H1	192.168.0.32	332.8 GBytes (75.7%)	439 GBytes	21 days	21.00 days	Data ID: 1059763 Time: 6/04/2019 6:15:30 AM
JEDI-DARWIN-T1-L1-L1	192.168.0.33	44.0 GBytes (18.0%)	244 GBytes	21 days	21.00 days	Data ID: 1059765 Time: 6/04/2019 6:15:31 AM
JEDI-DARWIN-T1-L1-H1	192.168.0.34	439.4 GBytes (100.0%)	439 GBytes	21 days	19.00 days	Data ID: 1059766 Time: 6/04/2019 6:15:32 AM
JEDI-DARWIN-T1-L2-L1	192.168.0.35	59.2 GBytes (24.2%)	244 GBytes	21 days	21.00 days	Data ID: 1059767 Time: 6/04/2019 6:15:33 AM
JEDI-DARWIN-T1-L2-H1	192.168.0.36	295.3 GBytes (67.2%)	439 GBytes	21 days	21.00 days	Data ID: 1059768 Time: 6/04/2019 6:15:34 AM
JEDI-DARWIN-T1-L3-L1	192.168.0.37	46.5 GBytes (19.0%)	244 GBytes	21 days	21.00 days	Data ID: 1059769 Time: 6/04/2019 6:15:36 AM
JEDI-DARWIN-T1-L3-H1	192.168.0.38	145.6 GBytes (33.1%)	439 GBytes	21 days	21.00 days	Data ID: 1059770 Time: 6/04/2019 6:15:37 AM
JEDI-DARWIN-T1-L3-K1	192.168.0.39	77.0 GBytes (17.5%)	439 GBytes	21 days	21.00 days	Data ID: 1059771 Time: 6/04/2019 6:15:37 AM
JEDI-DARWIN-T1-L4-L1	192.168.0.40	70.0 GBytes (28.7%)	244 GBytes	21 days	21.00 days	Data ID: 1059773 Time: 6/04/2019 6:15:39 AM
JEDI-DARWIN-T1-L4-H1	192.168.0.41	199.4 GBytes (45.4%)	439 GBytes	21 days	21.00 days	Data ID: 1059772 Time: 6/04/2019 6:15:38 AM
JEDI-DARWIN-T1-L4-K1	192.168.0.42	35.3 GBytes (8.0%)	439 GBytes	21 days	21.00 days	Data ID: 1059774 Time: 6/04/2019 6:15:40 AM
JEDI-DARWIN-T1-L5-L1	192.168.0.43	53.0 GBytes (21.7%)	244 GBytes	21 days	21.00 days	Data ID: 1059776 Time: 6/04/2019 6:15:41 AM
JEDI-DARWIN-T1-L5-H1	192.168.0.44	173.6 GBytes (39.5%)	439 GBytes	21 days	21.00 days	Data ID: 1059775 Time: 6/04/2019 6:15:41 AM

Current Usage Remaining Space (Max Size)





# Jedi Hotels - Adelaide

North Terrace  
Adelaide

## Mobotix Analytics Graph Report

Report Date Range: 10/04/2019 - 10/04/2019

Report Generated On: 11/04/2019

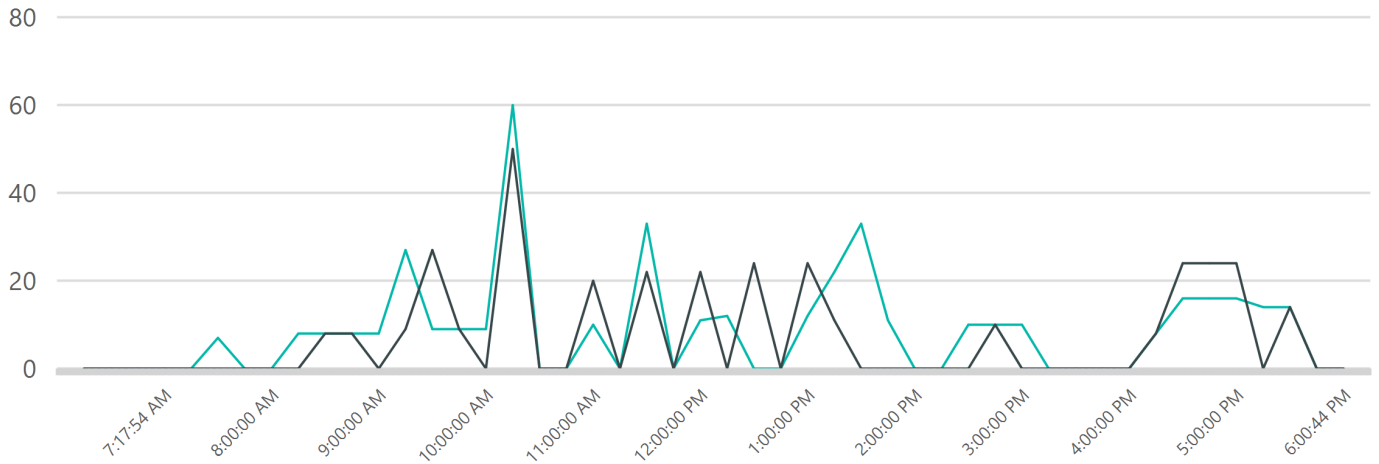
JEDI-ADE-CAM01

10/04/2019

Reception Main Entrance

JEDI-ADE-CAM01

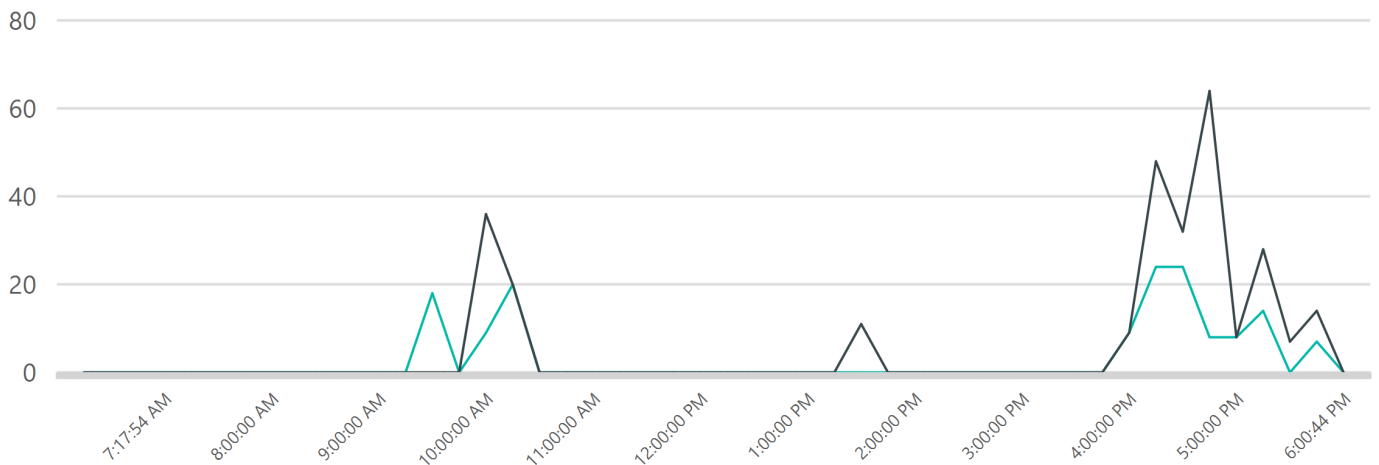
North South



Main Bar Entrance

JEDI-ADE-CAM01

North South





# Jedi Hotels - Darwin

Mitchell St  
Darwin City

## NAS Report

Report Date Range: 1/04/2019 - 7/04/2019

Report Generated On: 9/04/2019

JEDI-QNAP-01

Uptime: **99.80%**

QNAP TS-451+

IP: 192.168.0.201

Port: 8080

Status: **Online**

ID:2



Drive	Status	Size	Model	Serial
1	OK	3.64 tb	wd4003ffbx-68mu3n0	v6gb85sd6
2	OK	2.73 tb	wd3000f9yz-09n20I0	wd-wcc5d0047345
3	OK	2.73 tb	wd3000f9yz-09n20I0	wd-wcc5d0016946
4	OK	2.73 tb	wd3000f9yz-09n20I0	wd-wcc4a0015548

JEDI-QNAP-02

Uptime: **72.48%**

QNAP TS-469 Pro

IP: 192.168.0.202

Port: 8080

Status: **Online With Error**

ID:3



Drive	Status	Size	Model	Serial
1	OK	2.73 tb	wd30efrx-68euzn0	wd-wcc4n3rasebv
2	<b>ERROR</b>	2.73 tb	wd30efrx-68euzn0	wd-wcc4n4z3saw6
3	OK	2.73 tb	wd30efrx-68euzn0	wd-wcc4n4zdse5f
4	OK	2.73 tb	wd3000f9yz-09n20I0	wd-wcc5d0045827

JEDI-QNAP-03

Uptime: **94.95%**

QNAP TS-421

IP: 192.168.0.203

Port: 8080

Status: **Online**

ID:4



Drive	Status	Size	Model	Serial
1	OK	2.73 tb	wdc wd3000fyyz-01ul1b3	wd-wmc1f0f8e75z
2	OK	2.73 tb	wdc wd3000fyyz-01ul1b3	wd-wmc15s6ae21j
3	OK	2.73 tb	wdc wd3000f9yz-09n20I1	wd-wcc135563874
4	OK	3.64 tb	st4000ne0025-2ew107	zc15s7e2s



## Jedi Hotels - Darwin

Mitchell St  
Darwin City

### Detailed Camera & Photo Report

Report Date Range: 1/04/2019 - 7/04/2019

Report Generated On: 9/04/2019

JEDI-DARWIN-CAM34

Uptime: **100.00%**

MOBOTIX D15D-Sec

Camera Status Details From: 7/04/2019 11:15:44 PM (Using ID:1067252)

#### General Details

Status: Online  
Firmware: MX-V4.4.2.34 (2016-12-22)  
IP Address: 192.168.0.34  
Subnet Mask: 255.255.255.0  
Default Gateway: Gateway: 192.168.0.254, 'Connection: Ethernet interface  
DNS Servers: 192.168.0.254, 8.8.8.8, 4.2.2.2  
Link Speed: 100Mbps / Full Duplex  
Network Statistics: Dropped: 0.1%Collisions: 0%  
DHCP Enabled: off  
Microphone: Disabled\xa0  
Speaker: 0\xa0

#### Time

Camera Date/Time: 2019-04-07 23:05:41 AWST\nObtained Date/Time: 7/04/2019 11:15:44 PM  
NTP IP's: 192.168.0.254 (NTP)  
Last NTP Check: 2019-04-07 23:00:01  
Max NTP Offset: -0.524 ms

#### Configuration File

Config Time: 7/04/2019 9:00:10 AM  
Config Status: OK

#### Recording Settings

Armed: Enabled  
Recording Mode: Continuous Recording  
Frame Rate: 2 fps  
Event Frame Rate: 6 fps  
Start Events: none  
Re-Trigger Events: none  
Stop Events: none  
Time Before: \nTime After: 10 s

#### Storage Information

Target Days: 21 days  
Actual Days: **19 days**  
Max Storage: 439 GBytes  
Used Storage: 439.4 GBytes (100.0%)  
Newest Sequence: 2019-04-07 23:05:00 #837472  
Oldest Sequence: 2019-03-19 10:08:00 #781340

Left: 7/04/2019 1:04 AM 7/04/2019 6:00 AM 7/04/2019 12:00 PM 7/04/2019 7:00 PM



Right: 7/04/2019 1:04 AM 7/04/2019 6:00 AM 7/04/2019 12:00 PM 7/04/2019 7:00 PM



**Defender**  
SECURITY

Powered By:





## Jedi Hotels - Sydney

6 Macquarie St  
Sydney

### Current Cameras Not Online

Report Date Range: 10/04/2019 - 11/04/2019

Report Generated On: 11/04/2019

JEDI-SYDNEY-CAM01	Uptime: <b>0%</b>	MOBOTIX D12D-Sec
Status: <b>Offline</b>	Last Online:03/04/2019 4:27:52 PM	Unable to connect: Max retries exceeded
JEDI-SYDNEY-CAM04	Uptime: <b>83%</b>	MOBOTIX S16D-Sec
Status: <b>Online With Error</b>	Last Online:10/04/2019 7:30:40 PM	Unable to connect: Max retries exceeded
JEDI-SYDNEY-CAM09	Uptime: <b>96%</b>	MOBOTIX D16D-Sec
Status: <b>Online With Error</b>	Last Online:10/04/2019 11:36:40 PM	Unable to connect: Max retries exceeded
JEDI-SYDNEY-CAM16	Uptime: <b>0%</b>	MOBOTIX M16D-Sec
Status: <b>Offline</b>	Last Online:01/04/2019 9:13:18 AM	Unable to connect: Max retries exceeded
JEDI-SYDNEY-CAM27	Uptime: <b>0%</b>	MOBOTIX D25D-Sec
Status: <b>Offline</b>	Last Online:23/03/2019 2:48:23 PM	Unable to connect: Max retries exceeded





# Jedi Hotels - Darwin

Mitchell St  
Darwin City

## Image Report

Report Date Range: 1/04/2019 - 7/04/2019

Report Generated On: 9/04/2019

### JEDI-DARW-CAM41

Uptime: **100.00%**

MOBOTIX D15D-Sec



### JEDI-DARW-CAM42

Uptime: **93.56%**

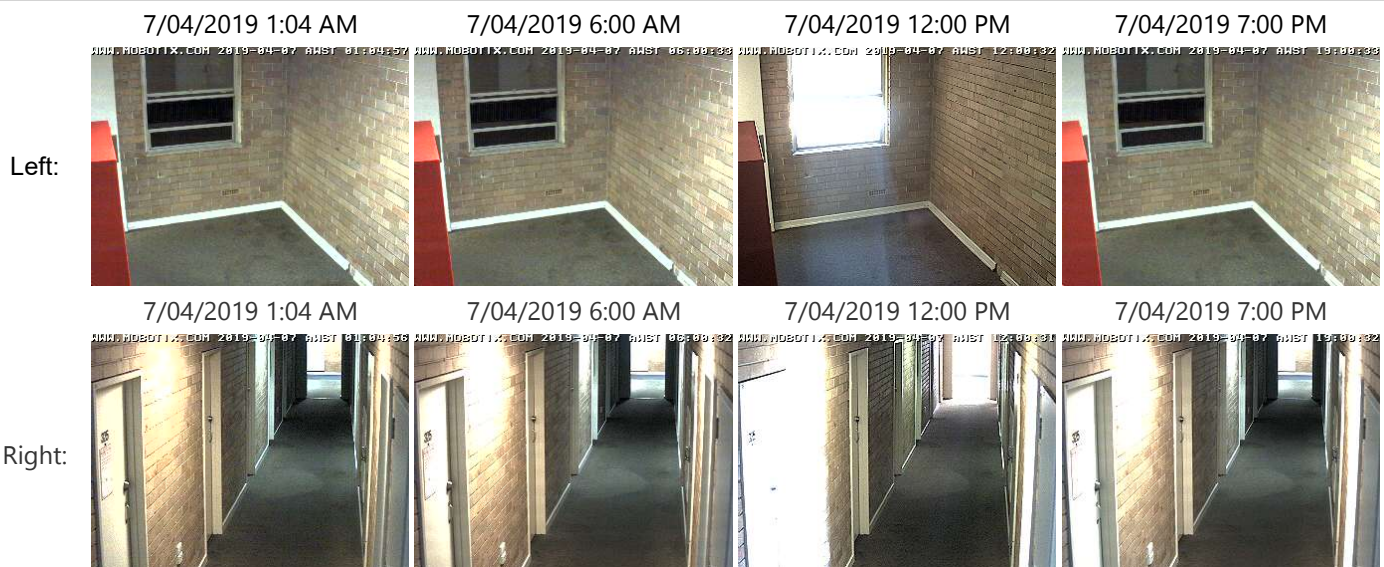
MOBOTIX c25



### JEDI-DARW-CAM43

Uptime: **75.85%**

MOBOTIX D15D-Sec



# Contact Us

Bring your CCTV back under your control.



**HELIOS**  
SECURITY HEALTH MONITORING



(08) 6399 8565



[sales@heliosmonitoring.com.au](mailto:sales@heliosmonitoring.com.au)



[www.heliosmonitoring.com.au](http://www.heliosmonitoring.com.au)

[www.heliosmonitoring.com.au](http://www.heliosmonitoring.com.au)